

# Environmental Justice

In the City of Santa Ana General Plan

Heninger Park and Pacific Park  
Neighborhoods

April 21, 2021



**golden city  
beyond**

A SHARED VISION FOR SANTA ANA







**ENVIRONMENTAL JUSTICE**  
IN THE SANTA ANA GENERAL PLAN

**Welcome**





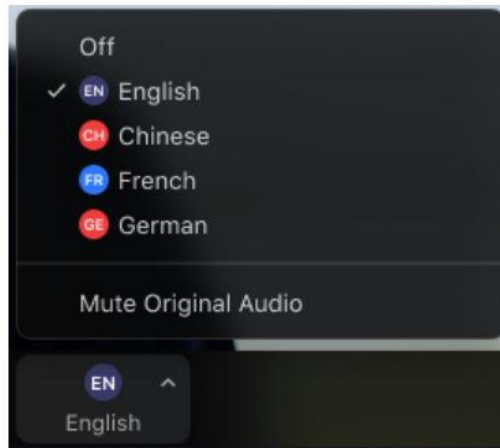
# ENVIRONMENTAL JUSTICE IN THE SANTA ANA GENERAL PLAN

Interpretación en Español Disponible / Spanish &  
Vietnamese Interpretation Available

1. In your meeting/webinar controls, click **Interpretation**.



2. Click the language that you would like to hear.



1) Haga Clic en el Círculo  
2) Haga Clic en la Idioma  
– Español





**ENVIRONMENTAL JUSTICE**  
IN THE SANTA ANA GENERAL PLAN



**City of Santa Ana Mayor**  
**Vicente Sarmiento**  
**American Rescue Plan Act of**  
**2021 / Revive Santa Ana**





## ENVIRONMENTAL JUSTICE IN THE SANTA ANA GENERAL PLAN

# American Rescue Plan Act of 2021-Revive Santa Ana

- Respond to public health emergency with respect to the COVID-19 or its negative economic impacts, including assistance programs
- Government services to the extent of reduction in revenue
- Necessary improvement in water, sewer, or broadband infrastructure

# Revive Santa Ana

*A Commitment to Protect and Assist our Community as we emerge from the impacts of the Pandemic*

## COVID-19 Recovery

- Efforts to address inequities of pandemic, outreach, testing, facilitation of vaccinations and education

## Assistance Programs

- Financial relief to those most impacted including businesses, workers and residents

## Public Health & Safety

- To enhance the provision of public health and safety services to our community

## Critical Infrastructure

- Revitalize and enhance infrastructure/services to address community needs such as outreach, amenities, mobility and technology

## City Fiscal Health

- Recover financial impacts of COVID-19 and restore staffing and programs

**Funded by American Rescue Plan Act and other federal allocations**



## LEARN MORE & SHARE YOUR IDEAS



Website:

<https://www.santa-ana.org/revive-santa-ana>



E-Mail:

[revive@santa-ana.org](mailto:revive@santa-ana.org)



Text:

(714) 805-8392



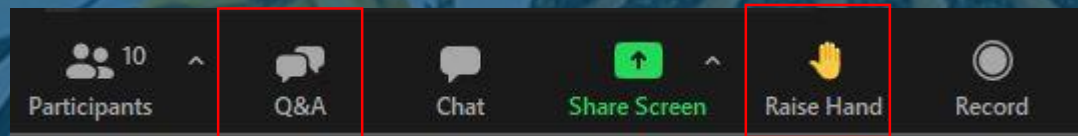
# ENVIRONMENTAL JUSTICE

## IN THE SANTA ANA GENERAL PLAN

### Ways to Participate During the Meeting / *Formas de Participar Durante la Reunión*

There are two ways to participate in the meeting / *Hay dos formas de participar en la reunión:*

- **Raise Your Hand / *Levanta la Mano***
  - If you have a comment to make or want the organizers attention use this function. *Si tiene un comentario para hacer o desea la atención de los organizadores utiliza esta función.*
- **Ask a Question / *Hacer una Pregunta***
  - Type it in the Q & A box. *Escríballo en el cuadro de Q & A.*







## ENVIRONMENTAL JUSTICE IN THE SANTA ANA GENERAL PLAN

### Ways to Participate if you are Dialing in / *Formas de Participar Si Usted Está por Teléfono*

If you are dialing in only press \*9 to raise your hand and dial \*6 to unmute to speak during the meeting.

*Si está marcando sólo oprime \*9 para levantar la mano y marque \*6 para desactivar el silencio para hablar durante la reunión*





# COMMUNITY OUTREACH

SANTA ANA GENERAL PLAN

## EJ Neighborhood Meeting Agenda:

- What is Environmental Justice?
- Santa Ana General Plan Update
- What is an EJ Neighborhood?
- Community Discussions - LISTENING





## What is environmental justice?

Some communities bear a disproportionate burden of pollution and health risks

Environmental justice (EJ) seeks to correct this inequality





# GOLDEN CITY BEYOND: 2045


## SANTA ANA GENERAL PLAN

Provides long-term policy direction to guide the physical development, quality of life, economic health, and sustainability of our Santa Ana community

### Volume 3 – Built Environment

### Volume 1 – Services and Infrastructure

### Volume 2 – Natural Environment

 Land Use Element >	 Historic Preservation Element >	 Urban Design Element >	 Community Element >	 Circulation Element >	 Economic Prosperity Element >	 Public Services Element >	 Conservation Element >	 Open Space Element >	 Noise Element >	 Safety Element >
---	---	--	---	--	---	---	--	--	---	--

CULTURE

SUSTAINABILITY

HEALTH

EDUCATION

EQUITY





Pacific Electric Park and Community Gardens  
Photo courtesy of Lisandro Orozco

# Planning for Healthy Communities Act (2016)

## What does SB 1000 require?

Cities and counties to update public policies for disadvantaged communities in order to:

- Reduce unique or compounded health risks
- Promote civil engagement in the public decision-making process
- Prioritize improvements and programs



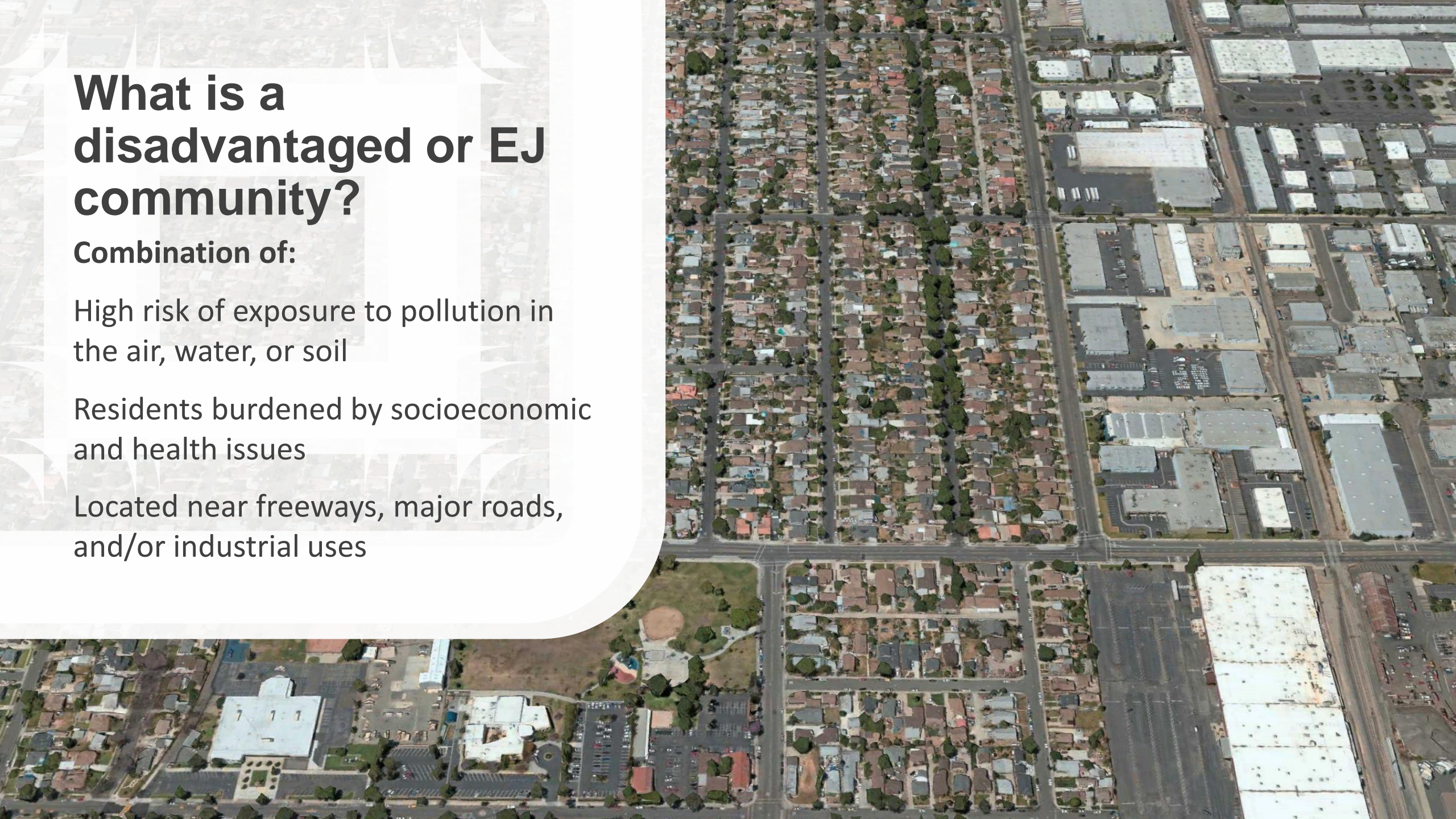
# What is a disadvantaged or EJ community?

Combination of:

High risk of exposure to pollution in the air, water, or soil

Residents burdened by socioeconomic and health issues

Located near freeways, major roads, and/or industrial uses





CES measures 20 indicators

Pollution Burden

Population Characteristics

Exposures

Environmental Effects

Sensitive Populations

Socioeconomic Factors



Ozone



PM2.5



Solid Waste Sites and Facilities



Cleanup Sites



Diesel Particulate Matter



Drinking Water Contaminants



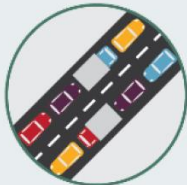
Groundwater Threats



Impaired Water Bodies



Toxic Releases from Facilities



Traffic



Pesticide Use



Hazardous Waste Generators and Facilities



Asthma



Cardiovascular Disease



Low Birth Weight Infants



Educational Attainment



Housing Burdened Low Income Households



Linguistic Isolation

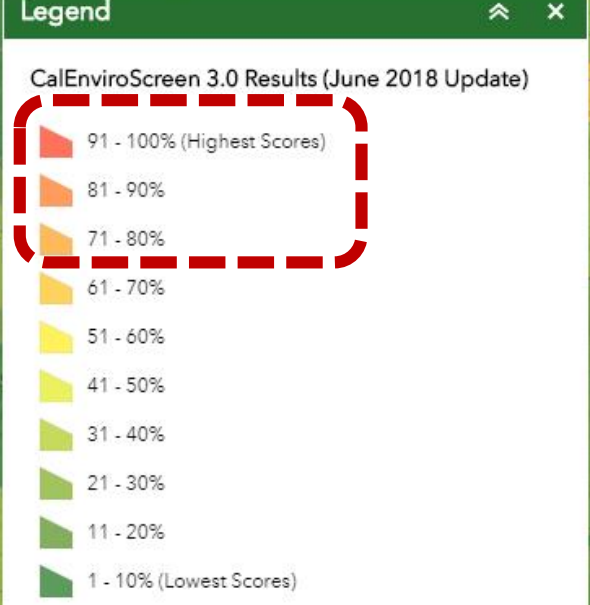
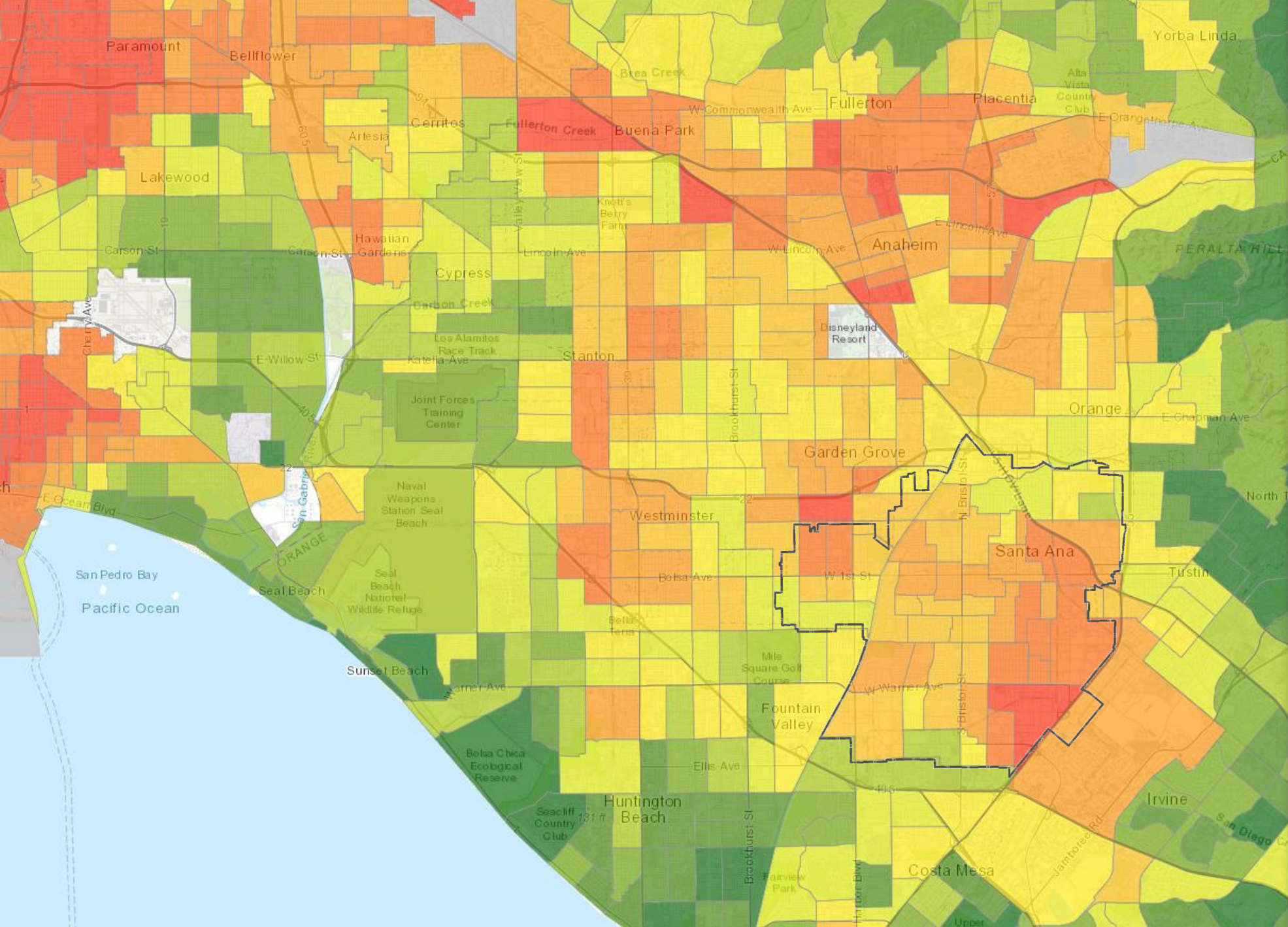


Poverty



Unemployment





**Combined scores compared to identify lowest to highest burden**

**Tracts ranked from 75% to 100% are a disadvantaged or EJ community**

*Note: The City's approach is consistent with CalEPA methodology.*



# EJ communities in the City of Santa Ana

 EJ Communities

Main priorities:



Diesel Emissions



Air Quality



Groundwater Contamination



Cleanup Sites



Solid Waste Sites



Lead Risk\*



Linguistic Isolation



Low Birth Weight Infants



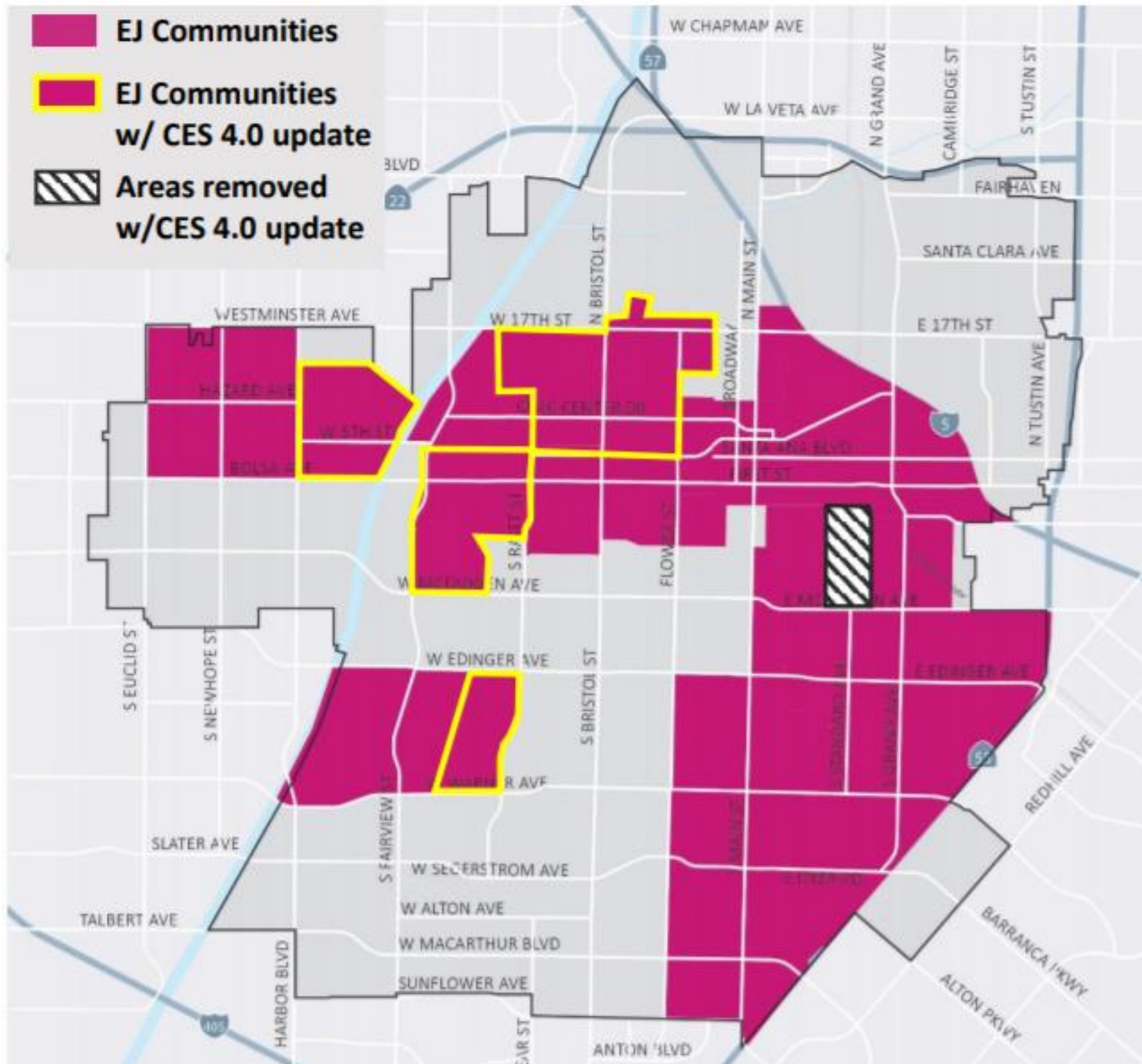
Housing Burden



Poverty



Education

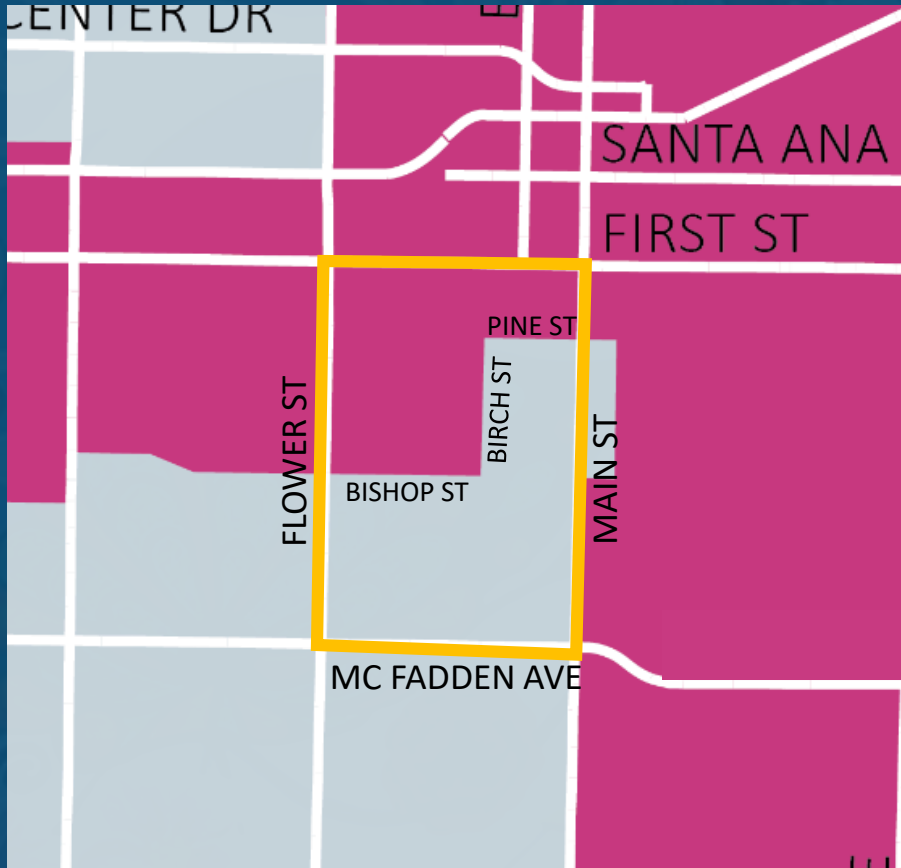






# ENVIRONMENTAL JUSTICE IN THE SANTA ANA GENERAL PLAN

## Heninger Park



## Pacific Park



 EJ Community

 Neighborhood Boundary

POLL





# ENVIRONMENTAL JUSTICE IN THE SANTA ANA GENERAL PLAN

The City is considering changes to its **goals, policies, and actions** that will improve existing and future conditions for all of Santa Ana, with a focus on those in greatest need of help and protection.



CULTURE

SUSTAINABILITY

HEALTH

EDUCATION

EQUITY





# ENVIRONMENTAL JUSTICE IN THE SANTA ANA GENERAL PLAN

What are your priorities for your  
Neighborhood?



POLL





## ENVIRONMENTAL JUSTICE IN THE SANTA ANA GENERAL PLAN

- Reducing exposure to pollution
- Improving public facilities
- Promoting healthy food
- Creating safe and sanitary housing
- Increasing physical activity
- Enhancing civic engagement





# DRAFT GENERAL PLAN ACTIONS

## IN THE SANTA ANA GENERAL PLAN

### Land Use Element Action 2.12

Develop and adopt a **specific plan or corridor plan** for each of the land use **Focus Areas** to establish regulations and design standards with consideration of the **character, history and uniqueness** of existing corridors and neighborhoods.

*PBA/ CDA 2022*

CULTURE

SUSTAINABILITY

HEALTH

EDUCATION

EQUITY





# DRAFT GENERAL PLAN ACTIONS

## IN THE SANTA ANA GENERAL PLAN

### Conservation Element Action 1.10

Establish an environmental quality interagency team to evaluate, monitor, and make recommendations to address air quality and environmental hazard issues, with a special focus on environmental justice areas. Publish results and information on the City's website through a **dedicated Santa Ana Environmental Quality webpage**. *PBA 2021* 





# COMMUNITY OUTREACH IN THE SANTA ANA GENERAL PLAN

## Tentative Timeline

- EJ Neighborhood Meetings & Survey - March to May 2021
- EJ Community Comments refine Draft General Plan document - Spring 2021
- Planning Commission Work Study - Spring 2021
- Revised General Plan EIR - Summer 2021
- General Plan Public Hearings - Late 2021





# LEARN MORE & SHARE YOUR IDEAS



[www.santa-ana.org/general-plan](http://www.santa-ana.org/general-plan)



[newgeneralplan@santa-ana.org](mailto:newgeneralplan@santa-ana.org)



(714) 667-2781



**2. Improving Public Facilities**  
Answer Yes or No  
(Y/N) Does your neighborhood suffer from water pollution and/or dumping of trash and other items in creeks and storm drainage areas?  
( ) Are sidewalks and wheel chair ramps available in your neighborhood for all people, including those that may have special needs?  
( ) Are there convenient access to buses and other forms of public transportation?  
Do you have access to health care services (doctor, mental health professionals, dentists, hospital, health insurance)?  
Does your neighborhood have street lights?  
Does your neighborhood have educational facilities, schools, or programs that promote lifelong learning?  
Do you have access to affordable healthy food markets?  
Do you have access to fresh fruits and vegetables?  
Do you have access to nutritional food purchase options?  
Do you have a need for nutritional food purchase options?  
Additional comments or suggestions to improve public facilities in your community.

**3. Healthy Food**  
Answer Yes or No  
(Y/N) Do you have access to a nearby grocery store or market?  
( ) Do you have access to affordable healthy food markets?  
( ) Do you have access to fresh fruits and vegetables?  
( ) Do you have access to nutritional food purchase options?  
( ) Do you have a need for nutritional food purchase options?  
Additional comments or suggestions to improve healthy food in your community.

**4. Reduction of Air Pollution**  
Answer Yes or No  
(Y/N) Do you live near a major road or highway?  
( ) Do you live near a major road or highway?  
( ) Do you live near a major road or highway?  
( ) Do you live near a major road or highway?  
Additional comments or suggestions to reduce air pollution in your community.

**5. Healthy Food**  
Answer Yes or No  
(Y/N) Do you have access to a nearby grocery store or market?  
( ) Do you have access to affordable healthy food markets?  
( ) Do you have access to fresh fruits and vegetables?  
( ) Do you have access to nutritional food purchase options?  
( ) Do you have a need for nutritional food purchase options?  
Additional comments or suggestions to improve healthy food in your community.





**ENVIRONMENTAL JUSTICE**  
IN THE SANTA ANA GENERAL PLAN

**THANK YOU!**

**We look forward to continuing to build  
a path toward a healthier and more  
equitable Santa Ana.**