



P.O. Box 260770  
Encino, California 91426  
Land Planning, Finance & Development  
Tel. 818-380-2600

December 16, 2022

Jerry Guevara  
City of Santa Ana  
20 Civic Center Plaza, Ross Annex M-20  
Santa Ana, CA 92701

**Re: Second Community Meeting  
2202 E. 1st Street, Santa Ana, CA (APN: 402-181-04)**

Dear Mr. Guevara,

This letter with its associated attachments to verify that AMG has satisfied the requirements of the City of Santa Ana's Sunshine Ordinance.

In compliance with the Sunshine Ordinance, a second community meeting was held on December 13<sup>th</sup>, 2022 at Saint Jeanne De Lestonnac School.

Prior to the meeting AMG notified the community:

- 1) A private address list company identified the commercial and residential owners and tenants with a valid United States Postal Service address within a 1,000-foot radius of the subject property. Notices were mailed in both English and Spanish;
- 2) The same notice was posted at the development project site, as well as at the other two AMG developments; and
- 3) Published the notice in the OC Reporter on December 2<sup>nd</sup>, 2022. A digital copy of the notice was provided to the City and was subsequently posted to the City's website.

Meeting minutes are provided as an attachment. All public comment inquiries were responded to during the meeting.

Should you have any questions on the project, please contact me at 818-697-4919 / [kcalica@amgland.com](mailto:kcalica@amgland.com).

Sincerely,

A handwritten signature in blue ink, appearing to read 'Alexis Gevorgian', is written over a light blue rectangular background.

Alexis Gevorgian

Attachments:

1. Community Notice
2. Photos of Notices at Project Site
3. Photos of Notices at Metro East and First Point
4. OC Reporter-Copy of Publication
5. Meeting Minutes & Public Comments
6. Meeting Sign-In Sheet
7. Notification Map & Mailing Labels



## **AMG & Associates, LLC.**

**Cordially invites you to a community information meeting for:**

***2202 E. 1<sup>st</sup> Street Apartments***  
***An Affordable Housing Development***  
***at 2202 E. 1<sup>st</sup> Street, Santa Ana, CA 92701***



***The proposed project of 2202 E. 1<sup>st</sup> Street Apartments is highlighted in blue.***

### **MEETING DATE AND TIME**

**December 13<sup>th</sup>, 2022 – 5:30pm-6:30pm**

### **MEETING LOCATION: SAINT JEANNE DE LESTONNAC SCHOOL**

**16791 E. Main Street**

**Tustin, CA 92780**

**Conference Room**

2202 E. 1<sup>st</sup> Street Apartments will be a new affordable residential development. Please come and share your thoughts and ideas about this new rental housing development. At the meeting we will provide general information, answer questions and solicit input on the housing proposal.

If you have questions regarding this event or you require language interpretation services in languages other than English, please contact: Kimberly Calica at (818) 380-2600 Ext. 17 or [kcalica@amgland.com](mailto:kcalica@amgland.com)

This notice is being provided pursuant to Section 2-153(c) of Santa Ana Municipal Code.



## **AMG & Associates, LLC.**

**Cordialmente le invita a participar en una junta comunitaria para el Proyecto propuesta a continuacion:**

2202 E. 1<sup>st</sup> Street Apartments

*Un desarrollo de vivienda at 2202 E. 1<sup>st</sup> Street, Santa Ana, CA 92701*



***La ubicación propuesta de 2202 E. 1<sup>st</sup> Street Apartments es resaltada en azul.***

### **HORA Y FECHA DE REUNIÓN**

**13 de diciembre de 2022 – 5:30pm-6:30pm**

### **LOCALIZACIÓN DE REUNIÓN: SAINT JEANNE DE LESTONNAC SCHOOL**

**16791 E Main Street**

**Tustin, CA 92780**

**Sala de conferencias**

2202 E. 1<sup>st</sup> Street Apartments será un nuevo desarrollo residencial asequible. Por favor, ven y comparte tus pensamientos o ideas acerca de este nuevo desarrollo de viviendas de alquiler. En la reunión se dara información general, vamos a responder a preguntas y aceptaremos comentarios sobre la propuesta de esta vivienda.

Si usted tiene preguntas acerca de este evento o requiere servicios de interpretación al español, por favor póngase en contacto con:

Kimberly Calica al (818) 380-2600 Ext. 17 or [kcalica@amgland.com](mailto:kcalica@amgland.com)

# Notices at Project Site



## Notices at Metro East



## Notices at First Point



# ORANGE COUNTY REPORTER

~SINCE 1921~

Mailing Address : 600 W SANTA ANA BLVD, SANTA ANA, CA 92701  
Telephone (714) 543-2027 / Fax (714) 542-6841  
Visit us @ [www.LegalAdstore.com](http://www.LegalAdstore.com)

Kimberly Calica  
AMG & ASSOCIATES LLC  
PO BOX 260770  
ENCINO, CA 91426

## COPY OF NOTICE

Notice Type: HRG NOTICE OF HEARING

Ad Description  
Santa Ana Community Meeting

To the right is a copy of the notice you sent to us for publication in the ORANGE COUNTY REPORTER. Thank you for using our newspaper. Please read this notice carefully and call us with any corrections. The Proof of Publication will be filed with the County Clerk, if required, and mailed to you after the last date below. Publication date(s) for this notice is (are):

12/02/2022

The charge(s) for this order is as follows. An invoice will be sent after the last date of publication. If you prepaid this order in full, you will not receive an invoice.

Publication	\$38.75
Total	\$38.75

### Daily Journal Corporation

Serving your legal advertising needs throughout California.

ORANGE COUNTY REPORTER, SANTA ANA	(714) 543-2027
BUSINESS JOURNAL, RIVERSIDE	(951) 784-0111
DAILY COMMERCE, LOS ANGELES	(213) 229-5300
LOS ANGELES DAILY JOURNAL, LOS ANGELES	(213) 229-5300
SAN FRANCISCO DAILY JOURNAL, SAN FRANCISCO	(800) 640-4829
SAN JOSE POST-RECORD, SAN JOSE	(408) 287-4866
THE DAILY RECORDER, SACRAMENTO	(916) 444-2355
THE DAILY TRANSCRIPT, SAN DIEGO	(619) 232-3486
THE INTER-CITY EXPRESS, OAKLAND	(510) 272-4747

OR# 3649106

**AMG & Associates, LLC.**  
Cordially invites you to a community information meeting for:

*2202 E. 1<sup>st</sup> Street Apartments*  
*An Affordable Housing Development*  
*at 2202 E. 1<sup>st</sup> Street, Santa Ana, CA 92701*

**MEETING DATE AND TIME**  
**December 13<sup>th</sup>, 2022 - 5:30pm-6:30pm**  
**MEETING LOCATION: SAINT JEANNE DE LESTONNAC SCHOOL**

**16791 E Main Street**  
**Tustin, CA 92780**  
Conference Room  
2202 E. 1<sup>st</sup> Street Apartments will be a new affordable residential development. Please come and share your thoughts and ideas about this new rental housing development. At the meeting we will provide general information, answer questions and solicit input on the housing proposal.

If you have questions regarding this event or you require language interpretation services in languages other than English, please contact:  
Kimberly Calica at (818) 380-2600 or [kcalica@amgland.com](mailto:kcalica@amgland.com)

12/2/22

**OR-3649106#**



\* A 0 0 0 0 0 6 1 7 7 5 6 9 \*

2202 E. First Street  
Santa Ana, CA 92701  
Sunshine Ordinance - Second Community Meeting Minutes

In compliance with the Sunshine Ordinance, a community meeting was held at Saint Jeanne De Lestonnac School on December 13<sup>th</sup>, 2022 from 5:30 pm - 6:30 pm.

Representatives from the Developer were as follows:

- Gene Broussard (AMG & Associates, LLC.)
- Kimberly Calica (AMG & Associates, LLC.)

Representatives from the City of Santa Ana:

- Jerry Guevara (assigned Case Planner)

Representatives of the Community

- Please see attached Meeting Sign-In Sheet.

The members of the community attended the meeting. AMG waited for additional members of the community to arrive before giving their presentation. An overview of the project, as well as the plans of the project were presented to the attendees.

There were questions about the forecourt, project location, and parking, which Mr. Broussard provided responses. Mr. McKee raised a question regarding the neighboring projects. There was a brief discussion on this topic, Mr. Guevara will send a link of the City's current projects to Mr. McKee. There was a question regarding liquor restrictions at the project, which Mr. Guevara provided a response that there are no liquor restrictions at apartments because it is like private home.

Sister Ceclia asked Jerry questions regarding the 2020 building. Mr. Broussard touched on the recent history of this building, which included the previous owner selling the building to a private equity firm. The firm found an investor that worked entitling a townhome project but ended up walking away.

Mr. McKee asked Mr. Guevara if there was a way to get a survey of the Saint Jeanne De Lestonnac School property. Mr. Broussard volunteered assistance on this. AMG will be in contact with him to provide information that is available. This led into a brief discussion of the car fire which affected the fence mesh next to the preschool.

The attendees and AMG briefly discussed the income levels and the rent for a studio.

There was a question regarding the ownership of the Riviera House. The attendees wanted to know if ownership changed, Mr. Broussard confirmed that it is still the same owner.

AMG stayed at the meeting until the attendees left.



# Meeting Sign-In

Project: 2202 E 1<sup>st</sup> St. Mixed-Use Development

Date: 12/13/2022

Facilitator: AMG & Associates, LLC.

Time: 5:30 pm - 6:30 pm

Place/Room: Saint Jeanne De Lestonnac School

	Print Name	Organization	Phone	Email
1.	Jerry Guevara	City of Santa Ana	(714)647-5481	Jguevara@ santa-ana.org
2.	ST. CHARLOTTE A. TURRIETTA	SJ DJS	714-936-9398	srcharlotte@ sjdlschool.com
③	Kevin M Lee	Saint Jeanne de Lestonnac	714/542-4271	lance@techesjdlschool.com
4.	Sister Mary Salud Estrada	"	714 720 6812	School Counselor
5.	Sister Mary Helen Rodriguez	"	714-2496	School Staff
6.	Marcos Luna	"	714-772-3423	
7.	Sister Cecilia Duran	"	714-542-4271	School
8.	Sister Mary Gomez	"	(714)542-4271	School
9.				
10.				
11.				
12.				
13.				
14.				
15.				
16.				
17.				
18.				
19.				
20.				
21.				



402-181-04 1  
EXECUTIVE CAR LEASING CO  
7807 SANTA MONICA BLVD  
WEST HOLLYWOOD CA 90046

402-181-04 1  
OCCUPANT  
2202 E 1ST ST  
SANTA ANA CA 92705

400-032-01 2  
S & H ASSOC LLC  
242 AVENIDA LA  
CUESTA SAN CLEMEN CA 92672

400-032-01 2  
OCCUPANT  
2320 E 4TH ST  
SANTA ANA CA 92705

400-032-02 3  
RUSSELL FISCHER PARTNERSHIP LP  
16061 BEACH BLVD  
HUNTINGTON BEACH CA 92648

400-032-02 3  
OCCUPANT  
325 N TUSTIN AVE  
SANTA ANA CA 92705

400-032-03 4  
RUSSELL FISCHER L P  
16061 BEACH BLVD  
HUNTINGTON BEACH CA 92648

400-032-03 4  
OCCUPANT  
301 N TUSTIN AVE  
SANTA ANA CA 92705

400-032-04 5  
JAE PARK GYOUNG  
171 N TUSTIN AVE  
TUSTIN CA 92780

400-032-08 6  
CITY OF TUSTIN  
135 W 3RD ST  
TUSTIN CA 92780

400-032-09-402-181-14 7-61  
STATE OF CALIFORNIA  
2501 PULLMAN ST  
SANTA ANA CA 92705

400-032-10 8  
GOLDWYN ENTERPRISES INC  
63605 SCENIC DR  
DESERST HOT SPRIN CA 92240

400-032-10 8  
OCCUPANT  
151 N TUSTIN AVE STE A1  
TUSTIN CA 92780

400-032-10 8  
OCCUPANT  
151 N TUSTIN AVE STE A2  
TUSTIN CA 92780

400-032-10 8  
OCCUPANT  
151 N TUSTIN AVE STE A3  
TUSTIN CA 92780

400-032-10 8  
OCCUPANT  
151 N TUSTIN AVE STE A4  
TUSTIN CA 92780

400-032-10 8  
OCCUPANT  
151 N TUSTIN AVE STE A5  
TUSTIN CA 92780

400-032-10 8  
OCCUPANT  
151 N TUSTIN AVE STE A6  
TUSTIN CA 92780

400-032-10 8  
OCCUPANT  
151 N TUSTIN AVE STE A8  
TUSTIN CA 92780

400-032-10 8  
OCCUPANT  
151 N TUSTIN AVE STE B1  
TUSTIN CA 92780

400-032-10 8  
OCCUPANT  
151 N TUSTIN AVE STE B2  
TUSTIN CA 92780

400-032-10 8  
OCCUPANT  
151 N TUSTIN AVE STE B3  
TUSTIN CA 92780

400-032-10 8  
OCCUPANT  
151 N TUSTIN AVE STE B4  
TUSTIN CA 92780

400-032-10 8  
OCCUPANT  
151 N TUSTIN AVE STE B5  
TUSTIN CA 92780

400-032-10 8  
OCCUPANT  
151 N TUSTIN AVE STE B6  
TUSTIN CA 92780

400-032-10 8  
OCCUPANT  
151 N TUSTIN AVE STE C1  
TUSTIN CA 92780

400-032-10 8  
OCCUPANT  
151 N TUSTIN AVE STE C2  
TUSTIN CA 92780

400-032-10 8  
OCCUPANT  
151 N TUSTIN AVE STE C3  
TUSTIN CA 92780

400-032-10 8  
OCCUPANT  
151 N TUSTIN AVE STE C4  
TUSTIN CA 92780

400-032-10 8  
OCCUPANT  
151 N TUSTIN AVE STE C5  
TUSTIN CA 92780

400-032-10 8  
OCCUPANT  
151 N TUSTIN AVE FRNT  
TUSTIN CA 92780

400-032-10 8  
OCCUPANT  
151 N TUSTIN AVE STE D1  
TUSTIN CA 92780

400-032-10 8  
OCCUPANT  
151 N TUSTIN AVE STE D2  
TUSTIN CA 92780

400-032-10 8  
OCCUPANT  
151 N TUSTIN AVE STE D3  
TUSTIN CA 92780

400-032-10 8  
OCCUPANT  
151 N TUSTIN AVE STE D4  
TUSTIN CA 92780

400-032-10 8  
OCCUPANT  
151 N TUSTIN AVE STE D5  
TUSTIN CA 92780

400-032-10 8  
OCCUPANT  
151 N TUSTIN AVE STE E1  
TUSTIN CA 92780

400-032-10 8  
OCCUPANT  
151 N TUSTIN AVE STE E2  
TUSTIN CA 92780

400-032-10 8  
OCCUPANT  
151 N TUSTIN AVE STE E3  
TUSTIN CA 92780

400-032-10 8  
OCCUPANT  
151 N TUSTIN AVE STE E4  
TUSTIN CA 92780

400-032-10 8  
OCCUPANT  
151 N TUSTIN AVE STE E5  
TUSTIN CA 92780

400-032-12 10  
GOODNEIGHBORS USA INC  
6131 ORANGETHORPE AVE # 410  
BURENA PARK CA 90620

400-032-12 10  
OCCUPANT  
131 N TUSTIN AVE STE 100  
TUSTIN CA 92780

400-032-12 10  
OCCUPANT  
131 N TUSTIN AVE STE 101  
TUSTIN CA 92780

400-032-12 10  
OCCUPANT  
131 N TUSTIN AVE STE 102  
TUSTIN CA 92780

400-032-12 10  
OCCUPANT  
131 N TUSTIN AVE STE 103  
TUSTIN CA 92780

400-032-12 10  
OCCUPANT  
131 N TUSTIN AVE STE 104  
TUSTIN CA 92780

400-032-12 10  
OCCUPANT  
131 N TUSTIN AVE STE 107  
TUSTIN CA 92780

400-032-12 10  
OCCUPANT  
131 N TUSTIN AVE STE 110  
TUSTIN CA 92780

400-032-12 10  
OCCUPANT  
131 N TUSTIN AVE STE 200  
TUSTIN CA 92780

400-032-12 10  
OCCUPANT  
131 N TUSTIN AVE STE 201  
TUSTIN CA 92780

400-032-12 10  
OCCUPANT  
131 N TUSTIN AVE STE 202  
TUSTIN CA 92780

400-032-12 10  
OCCUPANT  
131 N TUSTIN AVE STE 203  
TUSTIN CA 92780

400-032-12 10  
OCCUPANT  
131 N TUSTIN AVE STE 203A  
TUSTIN CA 92780

400-032-12 10  
OCCUPANT  
131 N TUSTIN AVE STE 203B  
TUSTIN CA 92780

400-032-12 10  
OCCUPANT  
131 N TUSTIN AVE STE 203C  
TUSTIN CA 92780

400-032-12 10  
OCCUPANT  
131 N TUSTIN AVE STE 203D  
TUSTIN CA 92780

400-032-12 10  
OCCUPANT  
131 N TUSTIN AVE STE 203E  
TUSTIN CA 92780

400-032-12 10  
OCCUPANT  
131 N TUSTIN AVE STE 203F  
TUSTIN CA 92780

400-032-12 10  
OCCUPANT  
131 N TUSTIN AVE STE 204  
TUSTIN CA 92780

400-032-12 10  
OCCUPANT  
131 N TUSTIN AVE STE 205  
TUSTIN CA 92780

400-032-12 10  
OCCUPANT  
131 N TUSTIN AVE STE 206  
TUSTIN CA 92780

400-032-12 10  
OCCUPANT  
131 N TUSTIN AVE STE 207  
TUSTIN CA 92780

400-032-12 10  
OCCUPANT  
131 N TUSTIN AVE STE 210  
TUSTIN CA 92780

400-032-12 10  
OCCUPANT  
131 N TUSTIN AVE STE 212  
TUSTIN CA 92780

400-032-12 10  
OCCUPANT  
131 N TUSTIN AVE STE 213  
TUSTIN CA 92780

400-032-14 11  
MARTIN CODA  
965 S HARVARD CIR  
ANAHEIM CA 92807

400-032-14 11  
OCCUPANT  
101 N TUSTIN AVE  
TUSTIN CA 92780

400-081-03 12  
KAISER FOUNDATION HEALTH PLAN INC  
1 KAISER PLZ FL 15  
OAKLAND CA 94612

400-081-03 12  
OCCUPANT  
1900 E 4TH ST  
SANTA ANA CA 92705

400-081-04 13  
CORONADO AVENUE ASSOCIATION LLC  
701 N BRAND BLVD # 810  
GLENDALE CA 91203

400-081-04 13  
OCCUPANT  
2000 E 4TH ST STE 100  
SANTA ANA CA 92705

400-081-04 13  
OCCUPANT  
2000 E 4TH ST STE 110  
SANTA ANA CA 92705

400-081-04 13  
OCCUPANT  
2000 E 4TH ST STE 115  
SANTA ANA CA 92705

400-081-04 13  
OCCUPANT  
2000 E 4TH ST STE 120  
SANTA ANA CA 92705

400-081-04 13  
OCCUPANT  
2000 E 4TH ST STE 200  
SANTA ANA CA 92705

400-081-04 13  
OCCUPANT  
2000 E 4TH ST STE 201  
SANTA ANA CA 92705

400-081-04 13  
OCCUPANT  
2000 E 4TH ST STE 205  
SANTA ANA CA 92705

400-081-04 13  
OCCUPANT  
2000 E 4TH ST STE 203  
SANTA ANA CA 92705

400-081-04 13  
OCCUPANT  
2000 E 4TH ST STE 230  
SANTA ANA CA 92705

400-081-04 13  
OCCUPANT  
2000 E 4TH ST STE 320  
SANTA ANA CA 92705

400-081-04 13  
OCCUPANT  
2000 E 4TH ST STE 300  
SANTA ANA CA 92705

400-081-04 13  
OCCUPANT  
2000 E 4TH ST STE 302  
SANTA ANA CA 92705

400-081-04 13  
OCCUPANT  
2000 E 4TH ST STE 350  
SANTA ANA CA 92705

400-081-04 13  
OCCUPANT  
2000 E 4TH ST STE 306  
SANTA ANA CA 92705

400-081-04 13  
OCCUPANT  
2000 E 4TH ST STE 206  
SANTA ANA CA 92705

400-081-04 13  
OCCUPANT  
2000 E 4TH ST STE 308  
SANTA ANA CA 92705

400-081-05 14  
GEORGETOWN BLDG L P  
250 N GOLDEN CIR # 211  
SANTA ANA CA 92705

400-081-05 14  
OCCUPANT  
250 N GOLDEN CIRCLE DR STE 100  
SANTA ANA CA 92705

400-081-05 14  
OCCUPANT  
250 N GOLDEN CIRCLE DR STE 101  
SANTA ANA CA 92705

400-081-05 14  
OCCUPANT  
250 N GOLDEN CIRCLE DR STE 104  
SANTA ANA CA 92705

400-081-05 14  
OCCUPANT  
250 N GOLDEN CIRCLE DR STE 107  
SANTA ANA CA 92705

400-081-05 14  
OCCUPANT  
250 N GOLDEN CIRCLE DR STE 204  
SANTA ANA CA 92705

400-081-05 14  
OCCUPANT  
250 N GOLDEN CIRCLE DR STE 205  
SANTA ANA CA 92705

400-081-05 14  
OCCUPANT  
250 N GOLDEN CIRCLE DR STE 207  
SANTA ANA CA 92705

400-081-05 14  
OCCUPANT  
250 N GOLDEN CIRCLE DR STE 109  
SANTA ANA CA 92705

400-081-05 14  
OCCUPANT  
250 N GOLDEN CIRCLE DR STE 110  
SANTA ANA CA 92705

400-081-05 14  
OCCUPANT  
250 N GOLDEN CIRCLE DR STE 112  
SANTA ANA CA 92705

400-081-05 14  
OCCUPANT  
250 N GOLDEN CIRCLE DR STE 115  
SANTA ANA CA 92705

400-081-05 14  
OCCUPANT  
250 N GOLDEN CIRCLE DR STE 200  
SANTA ANA CA 92705

400-081-05 14  
OCCUPANT  
250 N GOLDEN CIRCLE DR STE 210  
SANTA ANA CA 92705

400-081-05 14  
OCCUPANT  
250 N GOLDEN CIRCLE DR STE 208  
SANTA ANA CA 92705

400-081-05 14  
OCCUPANT  
250 N GOLDEN CIRCLE DR STE 211  
SANTA ANA CA 92705

400-081-06 15  
IRVING M CHASE  
2001 E 1ST ST  
SANTA ANA CA 92705

400-081-06 15  
OCCUPANT  
2001 E 1ST ST STE 110  
SANTA ANA CA 92705

400-081-06 15  
OCCUPANT  
2001 E 1ST ST STE 102  
SANTA ANA CA 92705

400-081-06 15  
OCCUPANT  
2001 E 1ST ST STE 103  
SANTA ANA CA 92705

400-081-06 15  
OCCUPANT  
2001 E 1ST ST STE 109  
SANTA ANA CA 92705

400-081-06 15  
OCCUPANT  
2001 E 1ST ST STE 140  
SANTA ANA CA 92705

400-081-06 15  
OCCUPANT  
2001 E 1ST ST STE 160  
SANTA ANA CA 92705

400-081-06 15  
OCCUPANT  
2001 E 1ST ST STE 201  
SANTA ANA CA 92705

400-081-06 15  
OCCUPANT  
2001 E 1ST ST STE 202  
SANTA ANA CA 92705

400-081-06 15  
OCCUPANT  
2001 E 1ST ST STE 203  
SANTA ANA CA 92705

400-081-06 15  
OCCUPANT  
2001 E 1ST ST STE 204  
SANTA ANA CA 92705

400-081-06 15  
OCCUPANT  
2001 E 1ST ST STE 205  
SANTA ANA CA 92705

400-081-06 15  
OCCUPANT  
2001 E 1ST ST STE 209  
SANTA ANA CA 92705

400-082-02 16  
C&C N HARBOR LLC  
14211 YORBA ST # 200  
TUSTIN CA 92780

400-082-02 16  
OCCUPANT  
2030 E 4TH ST STE 149G  
SANTA ANA CA 92705

400-082-02 16  
OCCUPANT  
2030 E 4TH ST STE 150G  
SANTA ANA CA 92705

400-082-02 16  
OCCUPANT  
2030 E 4TH ST STE 152G  
SANTA ANA CA 92705

400-082-02 16  
OCCUPANT  
2030 E 4TH ST STE 156G  
SANTA ANA CA 92705

400-082-02 16  
OCCUPANT  
2030 E 4TH ST STE 158G  
SANTA ANA CA 92705

400-082-02 16  
OCCUPANT  
2030 E 4TH ST STE 148F  
SANTA ANA CA 92705

400-082-02 16  
OCCUPANT  
2030 E 4TH ST STE 147F  
SANTA ANA CA 92705

400-082-02 16  
OCCUPANT  
2030 E 4TH ST STE 145F  
SANTA ANA CA 92705

400-082-02 16  
OCCUPANT  
2030 E 4TH ST STE 143F  
SANTA ANA CA 92705

400-082-02 16  
OCCUPANT  
2030 E 4TH ST STE 140F  
SANTA ANA CA 92705

400-082-02 16  
OCCUPANT  
2030 E 4TH ST STE 138F  
SANTA ANA CA 92705

400-082-02 16  
OCCUPANT  
2030 E 4TH ST STE 101E  
SANTA ANA CA 92705

400-082-02 16  
OCCUPANT  
2030 E 4TH ST STE 102E  
SANTA ANA CA 92705

400-082-02 16  
OCCUPANT  
2030 E 4TH ST STE 103E  
SANTA ANA CA 92705

400-082-02 16  
OCCUPANT  
2030 E 4TH ST STE 104E  
SANTA ANA CA 92705

400-082-02 16  
OCCUPANT  
2030 E 4TH ST STE 105E  
SANTA ANA CA 92705

400-082-02 16  
OCCUPANT  
2030 E 4TH ST STE 106E  
SANTA ANA CA 92705

400-082-02 16  
OCCUPANT  
2030 E 4TH ST STE 107E  
SANTA ANA CA 92705

400-082-02 16  
OCCUPANT  
2030 E 4TH ST STE 108D  
SANTA ANA CA 92705

400-082-02 16  
OCCUPANT  
2030 E 4TH ST STE 110D  
SANTA ANA CA 92705

400-082-02 16  
OCCUPANT  
2030 E 4TH ST STE 111D  
SANTA ANA CA 92705

400-082-02 16  
OCCUPANT  
2030 E 4TH ST STE 115D  
SANTA ANA CA 92705

400-082-02 16  
OCCUPANT  
2030 E 4TH ST STE 116D  
SANTA ANA CA 92705

400-082-02 16  
OCCUPANT  
2030 E 4TH ST STE 118D  
SANTA ANA CA 92705

400-082-02 16  
OCCUPANT  
2030 E 4TH ST STE 119D  
SANTA ANA CA 92705

400-082-02 16  
OCCUPANT  
2030 E 4TH ST STE 136C  
SANTA ANA CA 92705

400-082-02 16  
OCCUPANT  
2030 E 4TH ST STE 134C  
SANTA ANA CA 92705

400-082-02 16  
OCCUPANT  
2030 E 4TH ST STE 132C  
SANTA ANA CA 92705

400-082-02 16  
OCCUPANT  
2030 E 4TH ST STE 131C  
SANTA ANA CA 92705

400-082-02 16  
OCCUPANT  
2030 E 4TH ST STE 130B  
SANTA ANA CA 92705

400-082-02 16  
OCCUPANT  
2030 E 4TH ST STE 129B  
SANTA ANA CA 92705

400-082-02 16  
OCCUPANT  
2030 E 4TH ST STE 128B  
SANTA ANA CA 92705

400-082-02 16  
OCCUPANT  
2030 E 4TH ST STE 125B  
SANTA ANA CA 92705

400-082-02 16  
OCCUPANT  
2030 E 4TH ST STE 120A  
SANTA ANA CA 92705

400-082-02 16  
OCCUPANT  
2030 E 4TH ST STE 121A  
SANTA ANA CA 92705

400-082-02 16  
OCCUPANT  
2030 E 4TH ST STE 122A  
SANTA ANA CA 92705

400-082-02 16  
OCCUPANT  
2030 E 4TH ST STE 124A  
SANTA ANA CA 92705

400-082-02 16  
OCCUPANT  
2030 E 4TH ST STE 218A  
SANTA ANA CA 92705

400-082-02 16  
OCCUPANT  
2030 E 4TH ST STE 219A  
SANTA ANA CA 92705

400-082-02 16  
OCCUPANT  
2030 E 4TH ST STE 221A  
SANTA ANA CA 92705

400-082-02 16  
OCCUPANT  
2030 E 4TH ST STE 225B  
SANTA ANA CA 92705

400-082-02 16  
OCCUPANT  
2030 E 4TH ST STE 229B  
SANTA ANA CA 92705

400-082-02 16  
OCCUPANT  
2030 E 4TH ST STE 230B  
SANTA ANA CA 92705

400-082-02 16  
OCCUPANT  
2030 E 4TH ST STE 231C  
SANTA ANA CA 92705

400-082-02 16  
OCCUPANT  
2030 E 4TH ST STE 232C  
SANTA ANA CA 92705

400-082-02 16  
OCCUPANT  
2030 E 4TH ST STE 237C  
SANTA ANA CA 92705

400-082-02 16  
OCCUPANT  
2030 E 4TH ST STE 238C  
SANTA ANA CA 92705

400-082-02 16  
OCCUPANT  
2030 E 4TH ST STE 216D  
SANTA ANA CA 92705

400-082-02 16  
OCCUPANT  
2030 E 4TH ST STE 215D  
SANTA ANA CA 92705

400-082-02 16  
OCCUPANT  
2030 E 4TH ST STE 214D  
SANTA ANA CA 92705

400-082-02 16  
OCCUPANT  
2030 E 4TH ST STE 213D  
SANTA ANA CA 92705

400-082-02 16  
OCCUPANT  
2030 E 4TH ST STE 212D  
SANTA ANA CA 92705

400-082-02 16  
OCCUPANT  
2030 E 4TH ST STE 211D  
SANTA ANA CA 92705

400-082-02 16  
OCCUPANT  
2030 E 4TH ST STE 210D  
SANTA ANA CA 92705

400-082-02 16  
OCCUPANT  
2030 E 4TH ST STE 209D  
SANTA ANA CA 92705

400-082-02 16  
OCCUPANT  
2030 E 4TH ST STE 208D  
SANTA ANA CA 92705

400-082-02 16  
OCCUPANT  
2030 E 4TH ST STE 206E  
SANTA ANA CA 92705

400-082-02 16  
OCCUPANT  
2030 E 4TH ST STE 205E  
SANTA ANA CA 92705

400-082-02 16  
OCCUPANT  
2030 E 4TH ST STE 204E  
SANTA ANA CA 92705

400-082-02 16  
OCCUPANT  
2030 E 4TH ST STE 203E  
SANTA ANA CA 92705

400-082-02 16  
OCCUPANT  
2030 E 4TH ST STE 202E  
SANTA ANA CA 92705

400-082-02 16  
OCCUPANT  
2030 E 4TH ST STE 201E  
SANTA ANA CA 92705

400-082-02 16  
OCCUPANT  
2030 E 4TH ST STE 240F  
SANTA ANA CA 92705



400-082-02 16  
OCCUPANT  
2030 E 4TH ST STE 243F  
SANTA ANA CA 92705

400-082-02 16  
OCCUPANT  
2030 E 4TH ST STE 244F  
SANTA ANA CA 92705

400-082-02 16  
OCCUPANT  
2030 E 4TH ST STE 245F  
SANTA ANA CA 92705

400-082-02 16  
OCCUPANT  
2030 E 4TH ST STE 246F  
SANTA ANA CA 92705

400-082-02 16  
OCCUPANT  
2030 E 4TH ST STE 247F  
SANTA ANA CA 92705

400-082-02 16  
OCCUPANT  
2030 E 4TH ST STE 255G  
SANTA ANA CA 92705

400-082-02 16  
OCCUPANT  
2030 E 4TH ST STE 254G  
SANTA ANA CA 92705

400-082-02 16  
OCCUPANT  
2030 E 4TH ST STE 249G  
SANTA ANA CA 92705

400-082-02 16  
OCCUPANT  
2030 E 4TH ST STE 248G  
SANTA ANA CA 92705

400-082-04 17  
INLAND EMPIRE TECH CENTER  
PO BOX 4610  
SAN DIMAS CA 91773

400-082-04 17  
OCCUPANT  
203 N GOLDEN CIRCLE DR  
SANTA ANA CA 92705

400-082-05 18  
KYUNG SOON LEE  
11423 EXCELSIOR DR  
NORWALK CA 90650

400-082-05 18  
OCCUPANT  
2029 E 1ST ST  
SANTA ANA CA 92705

400-082-05 18  
OCCUPANT  
2031 E 1ST ST STE A2  
SANTA ANA CA 92705

400-082-05 18  
OCCUPANT  
2031 E 1ST ST STE A3  
SANTA ANA CA 92705

400-082-05 18  
OCCUPANT  
2031 E 1ST ST STE A4  
SANTA ANA CA 92705

400-082-05 18  
OCCUPANT  
2031 E 1ST ST STE A5  
SANTA ANA CA 92705

400-082-05 18  
OCCUPANT  
2031 E 1ST ST STE A6  
SANTA ANA CA 92705

400-082-05 18  
OCCUPANT  
2031 E 1ST ST STE A7  
SANTA ANA CA 92705

400-082-05 18  
OCCUPANT  
2031 E 1ST ST STE A8  
SANTA ANA CA 92705

400-082-05 18  
OCCUPANT  
2031 E 1ST ST STE A9  
SANTA ANA CA 92705

400-082-05 18  
OCCUPANT  
2031 E 1ST ST STE B  
SANTA ANA CA 92705

400-082-05 18  
OCCUPANT  
2031 E 1ST ST STE A1  
SANTA ANA CA 92705

400-091-01 19  
2100 E 4TH STR 92705 LLC  
1511 E ORANGETHORPE AVE # D  
FULLERTON CA 92831

400-091-01 19  
OCCUPANT  
2100 E 4TH ST  
SANTA ANA CA 92705

400-091-01 19  
OCCUPANT  
2100 E 4TH ST STE 200  
SANTA ANA CA 92705

400-091-04 20  
JAMSHED KHODAYAR  
27182 WOODBLUFF RD  
LAGUNA HILLS CA 92653

400-091-04 20  
OCCUPANT  
2204 E 4TH ST  
SANTA ANA CA 92705

400-091-06 21  
KATYLO 4 BUSINESS LLC  
401 N TUSTIN AVE  
SANTA ANA CA 92705

400-091-06 21  
OCCUPANT  
302 N TUSTIN AVE  
SANTA ANA CA 92705

400-091-06 21  
OCCUPANT  
320 N TUSTIN AVE  
SANTA ANA CA 92705

400-091-07 22  
THOMAS CHOW  
29 SARAZEN LN  
COTO DE CASA CA 92679

400-091-07 22  
OCCUPANT  
310 N TUSTIN AVE STE E  
SANTA ANA CA 92705

400-091-07 22  
OCCUPANT  
310 N TUSTIN AVE STE D  
SANTA ANA CA 92705

400-091-07 22  
OCCUPANT  
310 N TUSTIN AVE STE C  
SANTA ANA CA 92705

400-091-07 22  
OCCUPANT  
310 N TUSTIN AVE STE B  
SANTA ANA CA 92705

400-091-07 22  
OCCUPANT  
310 N TUSTIN AVE STE A  
SANTA ANA CA 92705

400-091-08 23  
SWP RENTALS INC  
2457 N HELIOTROPE DR  
SANTA ANA CA 92706

400-091-08 23  
OCCUPANT  
300 N TUSTIN AVE STE 200  
SANTA ANA CA 92705

400-091-08 23  
OCCUPANT  
300 N TUSTIN AVE STE 201  
SANTA ANA CA 92705

400-091-08 23  
OCCUPANT  
300 N TUSTIN AVE STE 100  
SANTA ANA CA 92705

400-091-08 23  
OCCUPANT  
300 N TUSTIN AVE STE 101  
SANTA ANA CA 92705

400-091-08 23  
OCCUPANT  
302 N TUSTIN AVE STE 100  
SANTA ANA CA 92705

400-091-08 23  
OCCUPANT  
302 N TUSTIN AVE STE 200  
SANTA ANA CA 92705

400-091-08 23  
OCCUPANT  
302 N TUSTIN AVE STE 101  
SANTA ANA CA 92705

400-091-08 23  
OCCUPANT  
302 N TUSTIN AVE STE 201  
SANTA ANA CA 92705

400-091-09 24  
RUSSELL R & JONI K STENQUIST  
PO BOX 3412  
ALPINE WY 83128

400-091-09 24  
OCCUPANT  
220 N TUSTIN AVE  
SANTA ANA CA 92705

400-091-10 25  
RCM EQUITIES LLC  
210 N TUSTIN AVE  
SANTA ANA CA 92705

400-091-11,12 26,27  
WEATHERFIELD PLAZA  
200 N TUSTIN AVE # 100  
SANTA ANA CA 92705

400-091-11 26  
OCCUPANT  
200 N TUSTIN AVE STE 100  
SANTA ANA CA 92705

400-091-11 26  
OCCUPANT  
200 N TUSTIN AVE STE 110  
SANTA ANA CA 92705

400-091-11 26  
OCCUPANT  
200 N TUSTIN AVE STE 120  
SANTA ANA CA 92705

400-091-11 26  
OCCUPANT  
200 N TUSTIN AVE STE 206  
SANTA ANA CA 92705

400-091-11 26  
OCCUPANT  
200 N TUSTIN AVE STE 200  
SANTA ANA CA 92705

400-091-11 26  
OCCUPANT  
200 N TUSTIN AVE STE 208  
SANTA ANA CA 92705

400-091-13 28  
HOOSHANG DALAVAIAAN  
100 N TUSTIN AVE  
TUSTIN CA 92780

400-091-16 29  
VICTOR AVILA  
2201 E FIRST ST  
SANTA ANA CA 92705

400-091-17 30  
GUEST HOUSE LP  
3416 VIA OPORTO # 301  
NEWPORT BEACH CA 92663

400-091-17 30  
RESIDENT  
2151 E 1ST ST UNIT 104  
SANTA ANA CA 92705

400-091-17 30  
RESIDENT  
2151 E 1ST ST UNIT 105  
SANTA ANA CA 92705

400-091-17 30  
RESIDENT  
2151 E 1ST ST UNIT 106  
SANTA ANA CA 92705

400-091-17 30  
RESIDENT  
2151 E 1ST ST UNIT 107  
SANTA ANA CA 92705

400-091-17 30  
RESIDENT  
2151 E 1ST ST UNIT 108  
SANTA ANA CA 92705

400-091-17 30  
RESIDENT  
2151 E 1ST ST UNIT 109  
SANTA ANA CA 92705

400-091-17 30  
RESIDENT  
2151 E 1ST ST UNIT 110  
SANTA ANA CA 92705

400-091-17 30  
RESIDENT  
2151 E 1ST ST UNIT 111  
SANTA ANA CA 92705

400-091-17 30  
RESIDENT  
2151 E 1ST ST UNIT 112  
SANTA ANA CA 92705

400-091-17 30  
RESIDENT  
2151 E 1ST ST UNIT 114  
SANTA ANA CA 92705

400-091-17 30  
RESIDENT  
2151 E 1ST ST UNIT 116  
SANTA ANA CA 92705

400-091-17 30  
RESIDENT  
2151 E 1ST ST UNIT 118  
SANTA ANA CA 92705

400-091-17 30  
RESIDENT  
2151 E 1ST ST UNIT 119  
SANTA ANA CA 92705

400-091-17 30  
RESIDENT  
2151 E 1ST ST UNIT 120  
SANTA ANA CA 92705

400-091-17 30  
RESIDENT  
2151 E 1ST ST UNIT 115  
SANTA ANA CA 92705

400-091-17 30  
RESIDENT  
2151 E 1ST ST UNIT 117  
SANTA ANA CA 92705

400-091-17 30  
RESIDENT  
2151 E 1ST ST UNIT 121  
SANTA ANA CA 92705

400-091-17 30  
RESIDENT  
2151 E 1ST ST UNIT 122  
SANTA ANA CA 92705

400-091-17 30  
RESIDENT  
2151 E 1ST ST UNIT 123  
SANTA ANA CA 92705

400-091-17 30  
RESIDENT  
2151 E 1ST ST UNIT 124  
SANTA ANA CA 92705

400-091-17 30  
RESIDENT  
2151 E 1ST ST UNIT 127  
SANTA ANA CA 92705

400-091-17 30  
RESIDENT  
2151 E 1ST ST UNIT 129  
SANTA ANA CA 92705

400-091-17 30  
RESIDENT  
2151 E 1ST ST UNIT 130  
SANTA ANA CA 92705

400-091-17 30  
RESIDENT  
2151 E 1ST ST UNIT 125  
SANTA ANA CA 92705

400-091-17 30  
RESIDENT  
2151 E 1ST ST UNIT 126  
SANTA ANA CA 92705

400-091-17 30  
RESIDENT  
2151 E 1ST ST UNIT 128  
SANTA ANA CA 92705

400-091-17 30  
RESIDENT  
2151 E 1ST ST UNIT 131  
SANTA ANA CA 92705

400-091-17 30  
RESIDENT  
2151 E 1ST ST UNIT 136  
SANTA ANA CA 92705

400-091-17 30  
RESIDENT  
2151 E 1ST ST UNIT 134  
SANTA ANA CA 92705

400-091-17 30  
RESIDENT  
2151 E 1ST ST UNIT 135  
SANTA ANA CA 92705

400-091-17 30  
RESIDENT  
2151 E 1ST ST UNIT 138  
SANTA ANA CA 92705

400-091-17 30  
RESIDENT  
2151 E 1ST ST UNIT 140  
SANTA ANA CA 92705

400-091-17 30  
RESIDENT  
2151 E 1ST ST UNIT 201  
SANTA ANA CA 92705

400-091-17 30  
RESIDENT  
2151 E 1ST ST UNIT 202  
SANTA ANA CA 92705

400-091-17 30  
RESIDENT  
2151 E 1ST ST UNIT 139  
SANTA ANA CA 92705

400-091-17 30  
RESIDENT  
2151 E 1ST ST UNIT 203  
SANTA ANA CA 92705

400-091-17 30  
RESIDENT  
2151 E 1ST ST UNIT 204  
SANTA ANA CA 92705

400-091-17 30  
RESIDENT  
2151 E 1ST ST UNIT 205  
SANTA ANA CA 92705

400-091-17 30  
RESIDENT  
2151 E 1ST ST UNIT 206  
SANTA ANA CA 92705

400-091-17 30  
RESIDENT  
2151 E 1ST ST UNIT 207  
SANTA ANA CA 92705

400-091-17 30  
RESIDENT  
2151 E 1ST ST UNIT 208  
SANTA ANA CA 92705

400-091-17 30  
RESIDENT  
2151 E 1ST ST UNIT 209  
SANTA ANA CA 92705

400-091-17 30  
RESIDENT  
2151 E 1ST ST UNIT 210  
SANTA ANA CA 92705

400-091-17 30  
RESIDENT  
2151 E 1ST ST UNIT 211  
SANTA ANA CA 92705

400-091-17 30  
RESIDENT  
2151 E 1ST ST UNIT 212  
SANTA ANA CA 92705

400-091-17 30  
RESIDENT  
2151 E 1ST ST UNIT 214  
SANTA ANA CA 92705

400-091-17 30  
RESIDENT  
2151 E 1ST ST UNIT 215  
SANTA ANA CA 92705

400-091-17 30  
RESIDENT  
2151 E 1ST ST UNIT 216  
SANTA ANA CA 92705

400-091-17 30  
RESIDENT  
2151 E 1ST ST UNIT 217  
SANTA ANA CA 92705

400-091-17 30  
RESIDENT  
2151 E 1ST ST UNIT 218  
SANTA ANA CA 92705

400-091-17 30  
RESIDENT  
2151 E 1ST ST UNIT 219  
SANTA ANA CA 92705

400-091-17 30  
RESIDENT  
2151 E 1ST ST UNIT 220  
SANTA ANA CA 92705

400-091-17 30  
RESIDENT  
2151 E 1ST ST UNIT 221  
SANTA ANA CA 92705

400-091-17 30  
RESIDENT  
2151 E 1ST ST UNIT 222  
SANTA ANA CA 92705

400-091-17 30  
RESIDENT  
2151 E 1ST ST UNIT 223  
SANTA ANA CA 92705

400-091-17 30  
RESIDENT  
2151 E 1ST ST UNIT 224  
SANTA ANA CA 92705

400-091-17 30  
RESIDENT  
2151 E 1ST ST UNIT 225  
SANTA ANA CA 92705

400-091-17 30  
RESIDENT  
2151 E 1ST ST UNIT 226  
SANTA ANA CA 92705

400-091-17 30  
RESIDENT  
2151 E 1ST ST UNIT 227  
SANTA ANA CA 92705

400-091-17 30  
RESIDENT  
2151 E 1ST ST UNIT 228  
SANTA ANA CA 92705

400-091-17 30  
RESIDENT  
2151 E 1ST ST UNIT 229  
SANTA ANA CA 92705

400-091-17 30  
RESIDENT  
2151 E 1ST ST UNIT 230  
SANTA ANA CA 92705

400-091-17 30  
RESIDENT  
2151 E 1ST ST UNIT 231  
SANTA ANA CA 92705

400-091-17 30  
RESIDENT  
2151 E 1ST ST UNIT 232  
SANTA ANA CA 92705

400-091-17 30  
RESIDENT  
2151 E 1ST ST UNIT 233  
SANTA ANA CA 92705

400-091-17 30  
RESIDENT  
2151 E 1ST ST UNIT 234  
SANTA ANA CA 92705

400-091-17 30  
RESIDENT  
2151 E 1ST ST UNIT 235  
SANTA ANA CA 92705

400-091-17 30  
RESIDENT  
2151 E 1ST ST UNIT 236  
SANTA ANA CA 92705

400-091-17 30  
RESIDENT  
2151 E 1ST ST UNIT 237  
SANTA ANA CA 92705

400-091-17 30  
RESIDENT  
2151 E 1ST ST UNIT 238  
SANTA ANA CA 92705

400-091-17 30  
RESIDENT  
2151 E 1ST ST UNIT 239  
SANTA ANA CA 92705

400-091-17 30  
RESIDENT  
2151 E 1ST ST UNIT 240  
SANTA ANA CA 92705

400-091-18 31  
DOUGLAS JIN LEE  
5333 MOUNTAIN MEADOW LN  
LA CANADA CA 91011

400-091-18 31  
OCCUPANT  
2131 E 1ST ST  
SANTA ANA CA 92705

400-091-19 32  
ING WEN HWANG  
5712 HIGHGATE TER  
IRVINE CA 92603

400-091-19 32  
OCCUPANT  
2111 E 1ST ST  
SANTA ANA CA 92705

400-091-22 33  
NEXUS GARDEN PLAZA  
100 N BARRANCA ST # 200  
WEST COVINA CA 91791

400-091-22 33  
OCCUPANT  
2112 E 4TH ST STE 100  
SANTA ANA CA 92705

400-091-22 33  
OCCUPANT  
2112 E 4TH ST STE 101  
SANTA ANA CA 92705

400-091-22 33  
OCCUPANT  
2112 E 4TH ST STE 102  
SANTA ANA CA 92705

400-091-22 33  
OCCUPANT  
2112 E 4TH ST STE 103  
SANTA ANA CA 92705

400-091-22 33  
OCCUPANT  
2112 E 4TH ST STE 104  
SANTA ANA CA 92705

400-091-22 33  
OCCUPANT  
2112 E 4TH ST STE 107  
SANTA ANA CA 92705

400-091-22 33  
OCCUPANT  
2112 E 4TH ST STE 108  
SANTA ANA CA 92705

400-091-22 33  
OCCUPANT  
2112 E 4TH ST STE 109  
SANTA ANA CA 92705

400-091-22 33  
OCCUPANT  
2112 E 4TH ST STE 110  
SANTA ANA CA 92705

400-091-22 33  
OCCUPANT  
2112 E 4TH ST STE 111  
SANTA ANA CA 92705

400-091-22 33  
OCCUPANT  
2112 E 4TH ST STE 112  
SANTA ANA CA 92705

400-091-22 33  
OCCUPANT  
2112 E 4TH ST STE 113  
SANTA ANA CA 92705

400-091-22 33  
OCCUPANT  
2112 E 4TH ST STE 114  
SANTA ANA CA 92705

400-091-22 33  
OCCUPANT  
2112 E 4TH ST STE 200  
SANTA ANA CA 92705

400-091-22 33  
OCCUPANT  
2112 E 4TH ST STE 210  
SANTA ANA CA 92705

400-091-22 33  
OCCUPANT  
2112 E 4TH ST STE 218  
SANTA ANA CA 92705

400-091-22 33  
OCCUPANT  
2112 E 4TH ST STE 220  
SANTA ANA CA 92705

400-091-22 33  
OCCUPANT  
2112 E 4TH ST STE 221  
SANTA ANA CA 92705

400-091-22 33  
OCCUPANT  
2112 E 4TH ST STE 222  
SANTA ANA CA 92705

400-091-22 33  
OCCUPANT  
2112 E 4TH ST STE 228  
SANTA ANA CA 92705

400-091-22 33  
OCCUPANT  
2112 E 4TH ST STE 230  
SANTA ANA CA 92705

400-091-22 33  
OCCUPANT  
2112 E 4TH ST STE 235  
SANTA ANA CA 92705

400-091-22 33  
OCCUPANT  
2112 E 4TH ST STE 238  
SANTA ANA CA 92705

400-091-22 33  
OCCUPANT  
2112 E 4TH ST STE 240  
SANTA ANA CA 92705

400-091-23 34  
CREST OLIVE  
2130 E FOURTH ST  
SANTA ANA CA 92705

400-091-23 34  
OCCUPANT  
2130 E 4TH ST STE 107  
SANTA ANA CA 92705

400-091-23 34  
OCCUPANT  
2130 E 4TH ST STE 110  
SANTA ANA CA 92705

400-091-23 34  
OCCUPANT  
2130 E 4TH ST STE 115  
SANTA ANA CA 92705

400-091-23 34  
OCCUPANT  
2130 E 4TH ST STE 120  
SANTA ANA CA 92705

400-091-23 34  
OCCUPANT  
2130 E 4TH ST STE 125  
SANTA ANA CA 92705

400-091-23 34  
OCCUPANT  
2130 E 4TH ST STE 150  
SANTA ANA CA 92705

400-091-23 34  
OCCUPANT  
2130 E 4TH ST STE 160  
SANTA ANA CA 92705

400-091-23 34  
OCCUPANT  
2130 E 4TH ST STE 103  
SANTA ANA CA 92705

400-091-23 34  
OCCUPANT  
2130 E 4TH ST STE 100  
SANTA ANA CA 92705

400-091-23 34  
OCCUPANT  
2130 E 4TH ST STE 180  
SANTA ANA CA 92705

400-091-23 34  
OCCUPANT  
2130 E 4TH ST STE 200  
SANTA ANA CA 92705

400-091-24 35  
USCOFW 2212 EAST 4TH STREET LLC  
730 THIRD AVE FL 4  
NEW YORK NY 10017

400-091-24 35  
OCCUPANT  
2212 E 4TH ST STE 101  
SANTA ANA CA 92705

400-091-24 35  
OCCUPANT  
2212 E 4TH ST STE 102  
SANTA ANA CA 92705

400-091-24 35  
OCCUPANT  
2212 E 4TH ST STE 103  
SANTA ANA CA 92705

400-091-24 35  
OCCUPANT  
2212 E 4TH ST STE 104  
SANTA ANA CA 92705

400-091-24 35  
OCCUPANT  
2212 E 4TH ST STE 201  
SANTA ANA CA 92705

400-091-24 35  
OCCUPANT  
2212 E 4TH ST STE 202  
SANTA ANA CA 92705

400-091-24 35  
OCCUPANT  
2212 E 4TH ST STE 301  
SANTA ANA CA 92705

400-091-24 35  
OCCUPANT  
2212 E 4TH ST STE 302  
SANTA ANA CA 92705

400-091-24 35  
OCCUPANT  
2212 E 4TH ST STE 303  
SANTA ANA CA 92705

400-091-24 35  
OCCUPANT  
2212 E 4TH ST STE 304  
SANTA ANA CA 92705

401-302-13 36  
BLESS PROPERTIES LLC  
215 CAMPBELL AVE  
REDLANDS CA 92373

401-302-13 36  
OCCUPANT  
741 W 1ST ST  
TUSTIN CA 92780

401-541-02/543-07 37,51  
JOHN W SIEGEL  
1131 CASTLEGATE LN  
SANTA ANA CA 92705

401-541-02 37  
RESIDENT  
730 W 1ST ST APT C  
TUSTIN CA 92780

401-541-02 37  
RESIDENT  
730 W 1ST ST APT D  
TUSTIN CA 92780

401-541-02 37  
RESIDENT  
730 W 1ST ST APT E  
TUSTIN CA 92780

401-541-02 37  
RESIDENT  
730 W 1ST ST APT B  
TUSTIN CA 92780

401-541-02 37  
RESIDENT  
730 W 1ST ST APT A  
TUSTIN CA 92780

401-543-07 51  
RESIDENT  
340 PASADENA AVE APT A  
TUSTIN CA 92780

401-543-07 51  
RESIDENT  
340 PASADENA AVE APT B  
TUSTIN CA 92780

401-543-07 51  
RESIDENT  
342 PASADENA AVE APT B  
TUSTIN CA 92780

401-543-07 51  
RESIDENT  
342 PASADENA AVE APT A  
TUSTIN CA 92780

401-541-07 38  
DIANA C OSTENDORF  
185 PASADENA AVE  
TUSTIN CA 92780

401-541-08 39  
DAVID W KOZLIK  
175 PASADENA AVE  
TUSTIN CA 92780

401-541-09 40  
TRAVIS G VERRALL  
165 PASADENA AVE  
TUSTIN CA 92780

401-541-10 41  
ROBERT I NASON  
155 PASADENA AVE  
TUSTIN CA 92780

401-541-11 42  
ROYCE & DANIELLE DEL MERARI  
145 PASADENA AVE  
TUSTIN CA 92780

401-541-15 43  
CUAUHTEMOC M & ARACELI OCHOA DE  
VILCHEZ  
135 S PASADENA AVE  
TUSTIN CA 92780

401-541-15 43  
RESIDENT  
137 PASADENA AVE  
TUSTIN CA 92780

401-541-17 44  
PCC IMPACTFUL HOLDINGS LLC  
PO BOX 4817  
ORANGE CA 92863

401-541-17 44  
OCCUPANT  
750 W 1ST ST  
TUSTIN CA 92780

401-542-18 45  
JOSE J & PATRICIA E DE PEREZ  
275 S PASADENA AVE  
TUSTIN CA 92780

401-542-19 46  
RICHARD NELSON LEON/MICHELLE  
JANETTE WONG  
265 PASADENA AVE  
TUSTIN CA 92780

401-542-20 47  
MARY ANNE NELSON  
255 PASADENA AVE  
TUSTIN CA 92780

401-542-21 48  
BRUCE J & ROXANE K WHITNEY  
235 PASADENA AVE  
TUSTIN CA 92780

401-542-22 49  
DOUGLAS C KING  
740 W 2ND ST  
TUSTIN CA 92780

401-543-06 50  
CYNTHIA ELIZABETH BOWEN  
48 VISTA LA CUESTA  
RANCHO SANTA MARG CA 92688

401-543-06 50  
RESIDENT  
320 PASADENA AVE APT A  
TUSTIN CA 92780

401-543-06 50  
RESIDENT  
320 PASADENA AVE APT B  
TUSTIN CA 92780

401-543-06 50  
RESIDENT  
320 PASADENA AVE APT C  
TUSTIN CA 92780

401-543-06 50  
RESIDENT  
320 PASADENA AVE APT D  
TUSTIN CA 92780

401-543-13 52  
MICHAEL J DEMORATZ  
310 S PASADENA AVE  
TUSTIN CA 92780

401-543-14 53  
MARTIN W & TINA M BLENZ  
270 S PASADENA AVE  
TUSTIN CA 92780

401-543-16 54  
SHUCRI I YAGHI  
112 E CHAPMAN AVE D  
ORANGE CA 92866

401-543-16 54  
OCCUPANT  
350 PASADENA AVE  
TUSTIN CA 92780

401-543-18,23 55,56  
CITY OF TUSTIN  
300 CENTENNIAL WAY  
TUSTIN CA 92780

401-543-18 55  
OCCUPANT  
170 PASADENA AVE  
TUSTIN CA 92780

402-181-03 57  
2210 E FIRST STREET LLC  
1900 AVENUE OF THE STARS # 2300  
LOS ANGELES CA 90067

402-181-03 57  
OCCUPANT  
2210 E 1ST ST  
SANTA ANA CA 92705

402-181-11 59  
SANTA ANA SR ASSOCIATES  
430 E STATE ST # 100  
EAGLE ID 83616

402-181-11 59  
RESIDENT  
2222 E 1ST ST UNIT 201  
SANTA ANA CA 92705

402-181-11 59  
RESIDENT  
2222 E 1ST ST UNIT 202  
SANTA ANA CA 92705

402-181-11 59  
RESIDENT  
2222 E 1ST ST UNIT 203  
SANTA ANA CA 92705

402-181-11 59  
RESIDENT  
2222 E 1ST ST UNIT 204  
SANTA ANA CA 92705

402-181-11 59  
RESIDENT  
2222 E 1ST ST UNIT 208  
SANTA ANA CA 92705

402-181-11 59  
RESIDENT  
2222 E 1ST ST UNIT 210  
SANTA ANA CA 92705

402-181-11 59  
RESIDENT  
2222 E 1ST ST UNIT 211  
SANTA ANA CA 92705

402-181-11 59  
RESIDENT  
2222 E 1ST ST UNIT 212  
SANTA ANA CA 92705

402-181-11 59  
RESIDENT  
2222 E 1ST ST UNIT 214  
SANTA ANA CA 92705

402-181-11 59  
RESIDENT  
2222 E 1ST ST UNIT 216  
SANTA ANA CA 92705

402-181-11 59  
RESIDENT  
2222 E 1ST ST UNIT 217  
SANTA ANA CA 92705

402-181-11 59  
RESIDENT  
2222 E 1ST ST UNIT 218  
SANTA ANA CA 92705

402-181-11 59  
RESIDENT  
2222 E 1ST ST UNIT 219  
SANTA ANA CA 92705

402-181-11 59  
RESIDENT  
2222 E 1ST ST UNIT 220  
SANTA ANA CA 92705

402-181-11 59  
RESIDENT  
2222 E 1ST ST UNIT 221  
SANTA ANA CA 92705

402-181-11 59  
RESIDENT  
2222 E 1ST ST UNIT 222  
SANTA ANA CA 92705

402-181-11 59  
RESIDENT  
2222 E 1ST ST UNIT 223  
SANTA ANA CA 92705







402-181-11 59  
RESIDENT  
2222 E 1ST ST UNIT 284  
SANTA ANA CA 92705

402-181-11 59  
RESIDENT  
2222 E 1ST ST UNIT 287  
SANTA ANA CA 92705

402-181-11 59  
RESIDENT  
2222 E 1ST ST UNIT 288  
SANTA ANA CA 92705

402-181-11 59  
RESIDENT  
2222 E 1ST ST UNIT 301  
SANTA ANA CA 92705

402-181-11 59  
RESIDENT  
2222 E 1ST ST UNIT 302  
SANTA ANA CA 92705

402-181-11 59  
RESIDENT  
2222 E 1ST ST UNIT 303  
SANTA ANA CA 92705

402-181-11 59  
RESIDENT  
2222 E 1ST ST UNIT 304  
SANTA ANA CA 92705

402-181-11 59  
RESIDENT  
2222 E 1ST ST UNIT 306  
SANTA ANA CA 92705

402-181-11 59  
RESIDENT  
2222 E 1ST ST UNIT 308  
SANTA ANA CA 92705

402-181-11 59  
RESIDENT  
2222 E 1ST ST UNIT 310  
SANTA ANA CA 92705

402-181-11 59  
RESIDENT  
2222 E 1ST ST UNIT 311  
SANTA ANA CA 92705

402-181-11 59  
RESIDENT  
2222 E 1ST ST UNIT 312  
SANTA ANA CA 92705

402-181-11 59  
RESIDENT  
2222 E 1ST ST UNIT 313  
SANTA ANA CA 92705

402-181-11 59  
RESIDENT  
2222 E 1ST ST UNIT 314  
SANTA ANA CA 92705

402-181-11 59  
RESIDENT  
2222 E 1ST ST UNIT 315  
SANTA ANA CA 92705

402-181-11 59  
RESIDENT  
2222 E 1ST ST UNIT 316  
SANTA ANA CA 92705

402-181-11 59  
RESIDENT  
2222 E 1ST ST UNIT 317  
SANTA ANA CA 92705

402-181-11 59  
RESIDENT  
2222 E 1ST ST UNIT 318  
SANTA ANA CA 92705

402-181-11 59  
RESIDENT  
2222 E 1ST ST UNIT 319  
SANTA ANA CA 92705

402-181-11 59  
RESIDENT  
2222 E 1ST ST UNIT 320  
SANTA ANA CA 92705

402-181-11 59  
RESIDENT  
2222 E 1ST ST UNIT 321  
SANTA ANA CA 92705

402-181-11 59  
RESIDENT  
2222 E 1ST ST UNIT 322  
SANTA ANA CA 92705

402-181-11 59  
RESIDENT  
2222 E 1ST ST UNIT 323  
SANTA ANA CA 92705

402-181-11 59  
RESIDENT  
2222 E 1ST ST UNIT 324  
SANTA ANA CA 92705

402-181-11 59  
RESIDENT  
2222 E 1ST ST UNIT 325  
SANTA ANA CA 92705

402-181-11 59  
RESIDENT  
2222 E 1ST ST UNIT 326  
SANTA ANA CA 92705

402-181-11 59  
RESIDENT  
2222 E 1ST ST UNIT 327  
SANTA ANA CA 92705

402-181-11 59  
RESIDENT  
2222 E 1ST ST UNIT 328  
SANTA ANA CA 92705

402-181-11 59  
RESIDENT  
2222 E 1ST ST UNIT 329  
SANTA ANA CA 92705

402-181-11 59  
RESIDENT  
2222 E 1ST ST UNIT 330  
SANTA ANA CA 92705





402-181-11 59  
RESIDENT  
2222 E 1ST ST UNIT 403  
SANTA ANA CA 92705

402-181-11 59  
RESIDENT  
2222 E 1ST ST UNIT 404  
SANTA ANA CA 92705

402-181-11 59  
RESIDENT  
2222 E 1ST ST UNIT 406  
SANTA ANA CA 92705

402-181-11 59  
RESIDENT  
2222 E 1ST ST UNIT 408  
SANTA ANA CA 92705

402-181-11 59  
RESIDENT  
2222 E 1ST ST UNIT 410  
SANTA ANA CA 92705

402-181-11 59  
RESIDENT  
2222 E 1ST ST UNIT 411  
SANTA ANA CA 92705

402-181-11 59  
RESIDENT  
2222 E 1ST ST UNIT 412  
SANTA ANA CA 92705

402-181-11 59  
RESIDENT  
2222 E 1ST ST UNIT 413  
SANTA ANA CA 92705

402-181-11 59  
RESIDENT  
2222 E 1ST ST UNIT 414  
SANTA ANA CA 92705

402-181-11 59  
RESIDENT  
2222 E 1ST ST UNIT 415  
SANTA ANA CA 92705

402-181-11 59  
RESIDENT  
2222 E 1ST ST UNIT 416  
SANTA ANA CA 92705

402-181-11 59  
RESIDENT  
2222 E 1ST ST UNIT 417  
SANTA ANA CA 92705

402-181-11 59  
RESIDENT  
2222 E 1ST ST UNIT 418  
SANTA ANA CA 92705

402-181-11 59  
RESIDENT  
2222 E 1ST ST UNIT 419  
SANTA ANA CA 92705

402-181-11 59  
RESIDENT  
2222 E 1ST ST UNIT 420  
SANTA ANA CA 92705

402-181-11 59  
RESIDENT  
2222 E 1ST ST UNIT 421  
SANTA ANA CA 92705

402-181-11 59  
RESIDENT  
2222 E 1ST ST UNIT 422  
SANTA ANA CA 92705

402-181-11 59  
RESIDENT  
2222 E 1ST ST UNIT 423  
SANTA ANA CA 92705

402-181-11 59  
RESIDENT  
2222 E 1ST ST UNIT 424  
SANTA ANA CA 92705

402-181-11 59  
RESIDENT  
2222 E 1ST ST UNIT 425  
SANTA ANA CA 92705

402-181-11 59  
RESIDENT  
2222 E 1ST ST UNIT 426  
SANTA ANA CA 92705

402-181-11 59  
RESIDENT  
2222 E 1ST ST UNIT 427  
SANTA ANA CA 92705

402-181-11 59  
RESIDENT  
2222 E 1ST ST UNIT 428  
SANTA ANA CA 92705

402-181-11 59  
RESIDENT  
2222 E 1ST ST UNIT 429  
SANTA ANA CA 92705

402-181-11 59  
RESIDENT  
2222 E 1ST ST UNIT 430  
SANTA ANA CA 92705

402-181-11 59  
RESIDENT  
2222 E 1ST ST UNIT 431  
SANTA ANA CA 92705

402-181-11 59  
RESIDENT  
2222 E 1ST ST UNIT 432  
SANTA ANA CA 92705

402-181-11 59  
RESIDENT  
2222 E 1ST ST UNIT 433  
SANTA ANA CA 92705

402-181-11 59  
RESIDENT  
2222 E 1ST ST UNIT 434  
SANTA ANA CA 92705

402-181-11 59  
RESIDENT  
2222 E 1ST ST UNIT 435  
SANTA ANA CA 92705



402-181-11 59  
RESIDENT  
2222 E 1ST ST UNIT 466  
SANTA ANA CA 92705

402-181-11 59  
RESIDENT  
2222 E 1ST ST UNIT 467  
SANTA ANA CA 92705

402-181-11 59  
RESIDENT  
2222 E 1ST ST UNIT 468  
SANTA ANA CA 92705

402-181-11 59  
RESIDENT  
2222 E 1ST ST UNIT 469  
SANTA ANA CA 92705

402-181-11 59  
RESIDENT  
2222 E 1ST ST UNIT 470  
SANTA ANA CA 92705

402-181-11 59  
RESIDENT  
2222 E 1ST ST UNIT 471  
SANTA ANA CA 92705

402-181-11 59  
RESIDENT  
2222 E 1ST ST UNIT 472  
SANTA ANA CA 92705

402-181-11 59  
RESIDENT  
2222 E 1ST ST UNIT 473  
SANTA ANA CA 92705

402-181-11 59  
RESIDENT  
2222 E 1ST ST UNIT 474  
SANTA ANA CA 92705

402-181-11 59  
RESIDENT  
2222 E 1ST ST UNIT 475  
SANTA ANA CA 92705

402-181-11 59  
RESIDENT  
2222 E 1ST ST UNIT 476  
SANTA ANA CA 92705

402-181-11 59  
RESIDENT  
2222 E 1ST ST UNIT 477  
SANTA ANA CA 92705

402-181-11 59  
RESIDENT  
2222 E 1ST ST UNIT 478  
SANTA ANA CA 92705

402-181-11 59  
RESIDENT  
2222 E 1ST ST UNIT 479  
SANTA ANA CA 92705

402-181-11 59  
RESIDENT  
2222 E 1ST ST UNIT 480  
SANTA ANA CA 92705

402-181-11 59  
RESIDENT  
2222 E 1ST ST UNIT 481  
SANTA ANA CA 92705

402-181-11 59  
RESIDENT  
2222 E 1ST ST UNIT 482  
SANTA ANA CA 92705

402-181-11 59  
RESIDENT  
2222 E 1ST ST UNIT 483  
SANTA ANA CA 92705

402-181-11 59  
RESIDENT  
2222 E 1ST ST UNIT 484  
SANTA ANA CA 92705

402-181-11 59  
RESIDENT  
2222 E 1ST ST UNIT 485  
SANTA ANA CA 92705

402-181-11 59  
RESIDENT  
2222 E 1ST ST UNIT 486  
SANTA ANA CA 92705

402-181-11 59  
RESIDENT  
2222 E 1ST ST UNIT 487  
SANTA ANA CA 92705

402-181-11 59  
RESIDENT  
2222 E 1ST ST UNIT 488  
SANTA ANA CA 92705

402-181-11 59  
RESIDENT  
2222 E 1ST ST UNIT 501  
SANTA ANA CA 92705

402-181-11 59  
RESIDENT  
2222 E 1ST ST UNIT 502  
SANTA ANA CA 92705

402-181-11 59  
RESIDENT  
2222 E 1ST ST UNIT 503  
SANTA ANA CA 92705

402-181-11 59  
RESIDENT  
2222 E 1ST ST UNIT 504  
SANTA ANA CA 92705

402-181-11 59  
RESIDENT  
2222 E 1ST ST UNIT 506  
SANTA ANA CA 92705

402-181-11 59  
RESIDENT  
2222 E 1ST ST UNIT 508  
SANTA ANA CA 92705

402-181-11 59  
RESIDENT  
2222 E 1ST ST UNIT 510  
SANTA ANA CA 92705







402-181-11 59  
RESIDENT  
2222 E 1ST ST UNIT 571  
SANTA ANA CA 92705

402-181-11 59  
RESIDENT  
2222 E 1ST ST UNIT 572  
SANTA ANA CA 92705

402-181-11 59  
RESIDENT  
2222 E 1ST ST UNIT 573  
SANTA ANA CA 92705

402-181-11 59  
RESIDENT  
2222 E 1ST ST UNIT 574  
SANTA ANA CA 92705

402-181-11 59  
RESIDENT  
2222 E 1ST ST UNIT 575  
SANTA ANA CA 92705

402-181-11 59  
RESIDENT  
2222 E 1ST ST UNIT 576  
SANTA ANA CA 92705

402-181-11 59  
RESIDENT  
2222 E 1ST ST UNIT 577  
SANTA ANA CA 92705

402-181-11 59  
RESIDENT  
2222 E 1ST ST UNIT 578  
SANTA ANA CA 92705

402-181-11 59  
RESIDENT  
2222 E 1ST ST UNIT 579  
SANTA ANA CA 92705

402-181-11 59  
RESIDENT  
2222 E 1ST ST UNIT 580  
SANTA ANA CA 92705

402-181-11 59  
RESIDENT  
2222 E 1ST ST UNIT 581  
SANTA ANA CA 92705

402-181-11 59  
RESIDENT  
2222 E 1ST ST UNIT 582  
SANTA ANA CA 92705

402-181-11 59  
RESIDENT  
2222 E 1ST ST UNIT 583  
SANTA ANA CA 92705

402-181-11 59  
RESIDENT  
2222 E 1ST ST UNIT 584  
SANTA ANA CA 92705

402-181-11 59  
RESIDENT  
2222 E 1ST ST UNIT 585  
SANTA ANA CA 92705

402-181-11 59  
RESIDENT  
2222 E 1ST ST UNIT 586  
SANTA ANA CA 92705

402-181-11 59  
RESIDENT  
2222 E 1ST ST UNIT 587  
SANTA ANA CA 92705

402-181-11 59  
RESIDENT  
2222 E 1ST ST UNIT 588  
SANTA ANA CA 92705

402-181-11 59  
RESIDENT  
2222 E 1ST ST UNIT 601  
SANTA ANA CA 92705

402-181-11 59  
RESIDENT  
2222 E 1ST ST UNIT 602  
SANTA ANA CA 92705

402-181-11 59  
RESIDENT  
2222 E 1ST ST UNIT 603  
SANTA ANA CA 92705

402-181-11 59  
RESIDENT  
2222 E 1ST ST UNIT 604  
SANTA ANA CA 92705

402-181-11 59  
RESIDENT  
2222 E 1ST ST UNIT 606  
SANTA ANA CA 92705

402-181-11 59  
RESIDENT  
2222 E 1ST ST UNIT 608  
SANTA ANA CA 92705

402-181-11 59  
RESIDENT  
2222 E 1ST ST UNIT 610  
SANTA ANA CA 92705

402-181-11 59  
RESIDENT  
2222 E 1ST ST UNIT 611  
SANTA ANA CA 92705

402-181-11 59  
RESIDENT  
2222 E 1ST ST UNIT 612  
SANTA ANA CA 92705

402-181-11 59  
RESIDENT  
2222 E 1ST ST UNIT 613  
SANTA ANA CA 92705

402-181-11 59  
RESIDENT  
2222 E 1ST ST UNIT 614  
SANTA ANA CA 92705

402-181-11 59  
RESIDENT  
2222 E 1ST ST UNIT 615  
SANTA ANA CA 92705



402-181-11 59  
RESIDENT  
2222 E 1ST ST UNIT 646  
SANTA ANA CA 92705

402-181-11 59  
RESIDENT  
2222 E 1ST ST UNIT 647  
SANTA ANA CA 92705

402-181-11 59  
RESIDENT  
2222 E 1ST ST UNIT 648  
SANTA ANA CA 92705

402-181-11 59  
RESIDENT  
2222 E 1ST ST UNIT 649  
SANTA ANA CA 92705

402-181-11 59  
RESIDENT  
2222 E 1ST ST UNIT 650  
SANTA ANA CA 92705

402-181-11 59  
RESIDENT  
2222 E 1ST ST UNIT 651  
SANTA ANA CA 92705

402-181-11 59  
RESIDENT  
2222 E 1ST ST UNIT 652  
SANTA ANA CA 92705

402-181-11 59  
RESIDENT  
2222 E 1ST ST UNIT 653  
SANTA ANA CA 92705

402-181-11 59  
RESIDENT  
2222 E 1ST ST UNIT 654  
SANTA ANA CA 92705

402-181-11 59  
RESIDENT  
2222 E 1ST ST UNIT 655  
SANTA ANA CA 92705

402-181-11 59  
RESIDENT  
2222 E 1ST ST UNIT 656  
SANTA ANA CA 92705

402-181-11 59  
RESIDENT  
2222 E 1ST ST UNIT 657  
SANTA ANA CA 92705

402-181-11 59  
RESIDENT  
2222 E 1ST ST UNIT 659  
SANTA ANA CA 92705

402-181-11 59  
RESIDENT  
2222 E 1ST ST UNIT 661  
SANTA ANA CA 92705

402-181-11 59  
RESIDENT  
2222 E 1ST ST UNIT 662  
SANTA ANA CA 92705

402-181-11 59  
RESIDENT  
2222 E 1ST ST UNIT 663  
SANTA ANA CA 92705

402-181-11 59  
RESIDENT  
2222 E 1ST ST UNIT 664  
SANTA ANA CA 92705

402-181-11 59  
RESIDENT  
2222 E 1ST ST UNIT 665  
SANTA ANA CA 92705

402-181-11 59  
RESIDENT  
2222 E 1ST ST UNIT 666  
SANTA ANA CA 92705

402-181-11 59  
RESIDENT  
2222 E 1ST ST UNIT 667  
SANTA ANA CA 92705

402-181-11 59  
RESIDENT  
2222 E 1ST ST UNIT 668  
SANTA ANA CA 92705

402-181-11 59  
RESIDENT  
2222 E 1ST ST UNIT 669  
SANTA ANA CA 92705

402-181-11 59  
RESIDENT  
2222 E 1ST ST UNIT 670  
SANTA ANA CA 92705

402-181-11 59  
RESIDENT  
2222 E 1ST ST UNIT 671  
SANTA ANA CA 92705

402-181-11 59  
RESIDENT  
2222 E 1ST ST UNIT 672  
SANTA ANA CA 92705

402-181-11 59  
RESIDENT  
2222 E 1ST ST UNIT 673  
SANTA ANA CA 92705

402-181-11 59  
RESIDENT  
2222 E 1ST ST UNIT 674  
SANTA ANA CA 92705

402-181-11 59  
RESIDENT  
2222 E 1ST ST UNIT 675  
SANTA ANA CA 92705

402-181-11 59  
RESIDENT  
2222 E 1ST ST UNIT 676  
SANTA ANA CA 92705

402-181-11 59  
RESIDENT  
2222 E 1ST ST UNIT 677  
SANTA ANA CA 92705

402-181-11 59  
RESIDENT  
2222 E 1ST ST UNIT 678  
SANTA ANA CA 92705

402-181-11 59  
RESIDENT  
2222 E 1ST ST UNIT 679  
SANTA ANA CA 92705

402-181-11 59  
RESIDENT  
2222 E 1ST ST UNIT 680  
SANTA ANA CA 92705

402-181-11 59  
RESIDENT  
2222 E 1ST ST UNIT 681  
SANTA ANA CA 92705

402-181-11 59  
RESIDENT  
2222 E 1ST ST UNIT 682  
SANTA ANA CA 92705

402-181-11 59  
RESIDENT  
2222 E 1ST ST UNIT 683  
SANTA ANA CA 92705

402-181-11 59  
RESIDENT  
2222 E 1ST ST UNIT 684  
SANTA ANA CA 92705

402-181-11 59  
RESIDENT  
2222 E 1ST ST UNIT 685  
SANTA ANA CA 92705

402-181-11 59  
RESIDENT  
2222 E 1ST ST UNIT 686  
SANTA ANA CA 92705

402-181-11 59  
RESIDENT  
2222 E 1ST ST UNIT 687  
SANTA ANA CA 92705

402-181-11 59  
RESIDENT  
2222 E 1ST ST UNIT 688  
SANTA ANA CA 92705

402-181-11 59  
OCCUPANT  
2222 E 1ST ST STE A  
SANTA ANA CA 92705

402-191-03 62  
2020 E FIRST LLC  
200 PINE AVE # 630  
LONG BEACH CA 90802

402-191-03 62  
OCCUPANT  
2020 E 1ST ST STE 103  
SANTA ANA CA 92705

402-191-03 62  
OCCUPANT  
2020 E 1ST ST STE 110  
SANTA ANA CA 92705

402-191-03 62  
OCCUPANT  
2020 E 1ST ST STE 525  
SANTA ANA CA 92705

402-191-03 62  
OCCUPANT  
2020 E 1ST ST STE 120  
SANTA ANA CA 92705

402-191-04,12 63,64  
BROOMELL COMMERCIAL PROPERTIES LP  
SANTA ANA PACIFIC  
430 E STATE ST #100  
EAGLE ID 83618

402-191-04 63  
OCCUPANT  
2110 E 1ST ST  
SANTA ANA CA 92705

402-191-10 65  
SISTERS OF COMPANY OF MARY OUR LADY  
16791 E MAIN ST  
TUSTIN CA 92780

402-191-10 65  
RESIDENT  
2112 E 1ST ST  
SANTA ANA CA 92705

402-201-05 66  
EGP DEA SANTA ANA LLC  
2101 L STREET NW # 750  
WASHINGTON DC 20037

402-201-05 66  
OCCUPANT  
1900 E 1ST ST  
SANTA ANA CA 92705

402-201-07 67  
ORANGE COUNTY FLOOD CONTROL  
DISTRICT  
300 N FLOWER ST 6TH FLOOR  
SANTA ANA CA 92703

402-201-11 68  
SISTERS OF THE COMPANY OF MARY OUR  
LADY  
16791 E MAIN ST  
TUSTIN CA 92780

402-201-11 68  
OCCUPANT  
2000 E 1ST ST  
SANTA ANA CA 92705

402-271-13 69  
JAGAN N NARAYANAN  
617 IBIZA LN  
OXNARD CA 93035

402-271-14 70  
THONG HANH PHAM  
24972 BEACHWALK WAY  
DANA POINT CA 92629

402-271-14 70  
OCCUPANT  
16582 LORELEI LN  
TUSTIN CA 92780

402-271-18 71  
TUSTIN VILLAGE MHP ASSOCIATES L P  
320 N PARK VISTA ST  
ANAHEIM CA 92806

402-271-18 71  
RESIDENT  
102 E BALBOA LN  
TUSTIN CA 92780

402-271-18 71  
RESIDENT  
105 E BALBOA LN  
TUSTIN CA 92780

402-271-18 71  
RESIDENT  
106 E BALBOA LN  
TUSTIN CA 92780

402-271-18 71  
RESIDENT  
114 E BALBOA LN  
TUSTIN CA 92780

402-271-18 71  
RESIDENT  
118 E BALBOA LN  
TUSTIN CA 92780

402-271-18 71  
RESIDENT  
122 E BALBOA LN  
TUSTIN CA 92780

402-271-18 71  
RESIDENT  
126 E BALBOA LN  
TUSTIN CA 92780

402-271-18 71  
RESIDENT  
130 E BALBOA LN  
TUSTIN CA 92780

402-271-18 71  
RESIDENT  
140 E BALBOA LN  
TUSTIN CA 92780

402-271-18 71  
RESIDENT  
142 E BALBOA LN  
TUSTIN CA 92780

402-271-18 71  
RESIDENT  
144 E BALBOA LN  
TUSTIN CA 92780

402-271-18 71  
RESIDENT  
1 BUENA VIS  
TUSTIN CA 92780

402-271-18 71  
RESIDENT  
2 BUENA VIS  
TUSTIN CA 92780

402-271-18 71  
RESIDENT  
3 BUENA VIS  
TUSTIN CA 92780

402-271-18 71  
RESIDENT  
4 BUENA VIS  
TUSTIN CA 92780

402-271-18 71  
RESIDENT  
5 BUENA VIS  
TUSTIN CA 92780

402-271-18 71  
RESIDENT  
6 BUENA VIS  
TUSTIN CA 92780

402-271-18 71  
RESIDENT  
7 BUENA VIS  
TUSTIN CA 92780

402-271-18 71  
RESIDENT  
8 BUENA VIS  
TUSTIN CA 92780

402-271-18 71  
RESIDENT  
9 BUENA VIS  
TUSTIN CA 92780

402-271-18 71  
RESIDENT  
10 BUENA VIS  
TUSTIN CA 92780

402-271-18 71  
RESIDENT  
11 BUENA VIS  
TUSTIN CA 92780

402-271-18 71  
RESIDENT  
89 BUENA VIS  
TUSTIN CA 92780

402-271-18 71  
RESIDENT  
90 BUENA VIS  
TUSTIN CA 92780

402-271-18 71  
RESIDENT  
92 BUENA VIS  
TUSTIN CA 92780

402-271-18 71  
RESIDENT  
93 BUENA VIS  
TUSTIN CA 92780

402-271-18 71  
RESIDENT  
133 BUENA VIS  
TUSTIN CA 92780

402-271-18 71  
RESIDENT  
134 BUENA VIS  
TUSTIN CA 92780

402-271-18 71  
RESIDENT  
135 BUENA VIS  
TUSTIN CA 92780

402-271-18 71  
RESIDENT  
136 BUENA VIS  
TUSTIN CA 92780

402-271-18 71  
RESIDENT  
137 BUENA VIS  
TUSTIN CA 92780

402-271-18 71  
RESIDENT  
104 S COLOMBO LN  
TUSTIN CA 92780

402-271-18 71  
RESIDENT  
106 S COLOMBO LN  
TUSTIN CA 92780

402-271-18 71  
RESIDENT  
108 S COLOMBO LN  
TUSTIN CA 92780

402-271-18 71  
RESIDENT  
111 S COLOMBO LN  
TUSTIN CA 92780

402-271-18 71  
RESIDENT  
112 S COLOMBO LN  
TUSTIN CA 92780

402-271-18 71  
RESIDENT  
113 S COLOMBO LN  
TUSTIN CA 92780

402-271-18 71  
RESIDENT  
119 S COLOMBO LN  
TUSTIN CA 92780

402-271-18 71  
RESIDENT  
121 S COLOMBO LN  
TUSTIN CA 92780

402-271-18 71  
RESIDENT  
131 S COLOMBO LN  
TUSTIN CA 92780

402-271-18 71  
RESIDENT  
133 S COLOMBO LN  
TUSTIN CA 92780

402-271-18 71  
RESIDENT  
134 S COLOMBO LN  
TUSTIN CA 92780

402-271-18 71  
RESIDENT  
106 CORONA LN  
TUSTIN CA 92780

402-271-18 71  
RESIDENT  
112 CORONA LN  
TUSTIN CA 92780

402-271-18 71  
RESIDENT  
103 E CORONADO LN  
TUSTIN CA 92780

402-271-18 71  
RESIDENT  
105 E CORONADO LN  
TUSTIN CA 92780

402-271-18 71  
RESIDENT  
110 E CORONADO LN  
TUSTIN CA 92780

402-271-18 71  
RESIDENT  
112 E CORONADO LN  
TUSTIN CA 92780

402-271-18 71  
RESIDENT  
113 E CORONADO LN  
TUSTIN CA 92780

402-271-18 71  
RESIDENT  
114 E CORONADO LN  
TUSTIN CA 92780

402-271-18 71  
RESIDENT  
116 E CORONADO LN  
TUSTIN CA 92780

402-271-18 71  
RESIDENT  
117 E CORONADO LN  
TUSTIN CA 92780

402-271-18 71  
RESIDENT  
118 E CORONADO LN  
TUSTIN CA 92780

402-271-18 71  
RESIDENT  
122 E CORONADO LN  
TUSTIN CA 92780

402-271-18 71  
RESIDENT  
125 E CORONADO LN  
TUSTIN CA 92780

402-271-18 71  
RESIDENT  
126 E CORONADO LN  
TUSTIN CA 92780

402-271-18 71  
RESIDENT  
129 E CORONADO LN  
TUSTIN CA 92780

402-271-18 71  
RESIDENT  
137 E CORONADO LN  
TUSTIN CA 92780

402-271-18 71  
RESIDENT  
141 E CORONADO LN  
TUSTIN CA 92780

402-271-18 71  
RESIDENT  
145 E CORONADO LN  
TUSTIN CA 92780



402-271-18 71  
RESIDENT  
130 S CORTEZ LN  
TUSTIN CA 92780

402-271-18 71  
RESIDENT  
134 S CORTEZ LN  
TUSTIN CA 92780

402-271-18 71  
RESIDENT  
136 S CORTEZ LN  
TUSTIN CA 92780

402-271-18 71  
RESIDENT  
106 E DE ANZA LN  
TUSTIN CA 92780

402-271-18 71  
RESIDENT  
107 E DE ANZA LN  
TUSTIN CA 92780

402-271-18 71  
RESIDENT  
109 E DE ANZA LN  
TUSTIN CA 92780

402-271-18 71  
RESIDENT  
110 E DE ANZA LN  
TUSTIN CA 92780

402-271-18 71  
RESIDENT  
112 E DE ANZA LN  
TUSTIN CA 92780

402-271-18 71  
RESIDENT  
114 E DE ANZA LN  
TUSTIN CA 92780

402-271-18 71  
RESIDENT  
115 E DE ANZA LN  
TUSTIN CA 92780

402-271-18 71  
RESIDENT  
116 E DE ANZA LN  
TUSTIN CA 92780

402-271-18 71  
RESIDENT  
117 E DE ANZA LN  
TUSTIN CA 92780

402-271-18 71  
RESIDENT  
131 E DE ANZA LN  
TUSTIN CA 92780

402-271-18 71  
RESIDENT  
139 E DE ANZA LN  
TUSTIN CA 92780

402-271-18 71  
RESIDENT  
143 E DE ANZA LN  
TUSTIN CA 92780

402-271-18 71  
RESIDENT  
148 E DE ANZA LN  
TUSTIN CA 92780

402-271-18 71  
RESIDENT  
149 E DE ANZA LN  
TUSTIN CA 92780

402-271-18 71  
RESIDENT  
152 E DE ANZA LN  
TUSTIN CA 92780

402-271-18 71  
RESIDENT  
153 E DE ANZA LN  
TUSTIN CA 92780

402-271-18 71  
RESIDENT  
156 E DE ANZA LN  
TUSTIN CA 92780

402-271-18 71  
RESIDENT  
158 E DE ANZA LN  
TUSTIN CA 92780

402-271-18 71  
RESIDENT  
120 S DE SOTO LN  
TUSTIN CA 92780

402-271-18 71  
RESIDENT  
121 S DE SOTO LN  
TUSTIN CA 92780

402-271-18 71  
RESIDENT  
123 S DE SOTO LN  
TUSTIN CA 92780

402-271-18 71  
RESIDENT  
124 S DE SOTO LN  
TUSTIN CA 92780

402-271-18 71  
RESIDENT  
125 S DE SOTO LN  
TUSTIN CA 92780

402-271-18 71  
RESIDENT  
126 S DE SOTO LN  
TUSTIN CA 92780

402-271-18 71  
RESIDENT  
127 S DE SOTO LN  
TUSTIN CA 92780

402-271-18 71  
RESIDENT  
128 S DE SOTO LN  
TUSTIN CA 92780

402-271-18 71  
RESIDENT  
130 S DE SOTO LN  
TUSTIN CA 92780

402-271-18 71  
RESIDENT  
135 S DE SOTO LN  
TUSTIN CA 92780

402-271-18 71  
RESIDENT  
136 S DE SOTO LN  
TUSTIN CA 92780

402-271-18 71  
RESIDENT  
101 S PORTOLA LN  
TUSTIN CA 92780

402-271-18 71  
RESIDENT  
103 S PORTOLA LN  
TUSTIN CA 92780

402-271-18 71  
RESIDENT  
105 S PORTOLA LN  
TUSTIN CA 92780

402-271-18 71  
RESIDENT  
107 S PORTOLA LN  
TUSTIN CA 92780

402-271-18 71  
RESIDENT  
108 S PORTOLA LN  
TUSTIN CA 92780

402-271-18 71  
RESIDENT  
109 S PORTOLA LN  
TUSTIN CA 92780

402-271-18 71  
RESIDENT  
110 S PORTOLA LN  
TUSTIN CA 92780

402-271-18 71  
RESIDENT  
111 S PORTOLA LN  
TUSTIN CA 92780

402-271-18 71  
RESIDENT  
118 S PORTOLA LN  
TUSTIN CA 92780

402-271-18 71  
RESIDENT  
119 S PORTOLA LN  
TUSTIN CA 92780

402-271-18 71  
RESIDENT  
120 S PORTOLA LN  
TUSTIN CA 92780

402-271-18 71  
RESIDENT  
123 S PORTOLA LN  
TUSTIN CA 92780

402-271-18 71  
RESIDENT  
124 S PORTOLA LN  
TUSTIN CA 92780

402-271-18 71  
RESIDENT  
125 S PORTOLA LN  
TUSTIN CA 92780

402-271-18 71  
RESIDENT  
126 S PORTOLA LN  
TUSTIN CA 92780

402-271-18 71  
RESIDENT  
127 S PORTOLA LN  
TUSTIN CA 92780

402-271-18 71  
RESIDENT  
118 S SERRA LN  
TUSTIN CA 92780

402-271-18 71  
RESIDENT  
123 S SERRA LN  
TUSTIN CA 92780

402-271-18 71  
RESIDENT  
126 S SERRA LN  
TUSTIN CA 92780

402-271-18 71  
RESIDENT  
127 S SERRA LN  
TUSTIN CA 92780

402-271-18 71  
RESIDENT  
128 S SERRA LN  
TUSTIN CA 92780

402-271-18 71  
RESIDENT  
131 S SERRA LN  
TUSTIN CA 92780

402-271-18 71  
RESIDENT  
134 S SERRA LN  
TUSTIN CA 92780

402-271-18 71  
RESIDENT  
135 S SERRA LN  
TUSTIN CA 92780

402-271-18 71  
RESIDENT  
105 SONORA LN  
TUSTIN CA 92780

402-271-18 71  
RESIDENT  
115 SONORA LN  
TUSTIN CA 92780

891-950-91 72  
BERNARD A & GAIL L BRADFORD  
91 BUENA VIS  
TUSTIN CA 92780

891-960-01 73  
MARIA ISABEL & PEDRO HERNANDEZ  
126 S CORTEZ LN  
TUSTIN CA 92780

891-960-02 74  
MARBELLA PERIVAN / TAPIA, HECTOR  
124 S CORTEZ LN  
TUSTIN CA 92780

891-960-05 77  
MICHAEL P & PHYLLIS M MELENDEZ  
101 E DE ANZA LN  
TUSTIN CA 92780

891-960-11 80  
ALBERT M NAVARRO / SUAREZ L, JOSE LUIS  
113 E DE ANZA LN  
TUSTIN CA 92780

891-960-17 83  
ROSALINDA ZUNIGA AVIAS / SANCHEZ,  
JOSE ARTEMIO  
112 S PORTOLA LN  
TUSTIN CA 92780

891-960-22 85  
SANDRA SEGURA / MARAVILLA, LAURA  
102 S PORTOLA LN  
TUSTIN CA 92780

891-960-48 88  
VILLAGE MHP TUSTIN  
320 N PARK VISTA ST  
ANAHEIM CA 92806

891-960-56 91  
SAMIR KANUBHAI & ILA S SHAH  
133 S SERRA LN  
TUSTIN CA 92780

891-960-64 94  
YVETTE NAVARRO  
134 E BALBOA LN  
TUSTIN CA 92780

891-960-71 97  
CINDY VEGAS GONZALEZ  
120 E BALBOA LN  
TUSTIN CA 92780

891-960-77 100  
SELENE CHAIREZ  
108 E BALBOA LN  
TUSTIN CA 92780

891-960-03 75  
JOSE MARTINEZ  
122 S CORTEZ LN  
TUSTIN CA 92780

891-960-07 78  
EDI FLORES / GLORES, ANA G  
105 E DE ANZA LN  
TUSTIN CA 92780

891-960-15 81  
JOSE FLORENCIO BAUTISTA VARGAS /  
CASTILLO, AZUCENA HURTADO  
116 S PORTOLA LN  
TUSTIN CA 92780

891-960-20 84  
ANA HERNANDEZ / AGUILAR, MIRNA  
2060 NEWPORT BLVD SPC 6  
COSTA MESA CA 92627

891-960-26 86  
LESLIE FITZGERALD  
107 E CORONADO LN  
TUSTIN CA 92780

891-960-52 89  
JOSE DAVID & ROSALVA FACUNDO  
125 S SERRA LN  
TUSTIN CA 92780

891-960-58 92  
CARLOS B MONZON  
146 E BALBOA LN  
TUSTIN CA 92780

891-960-65 95  
JAVIER A VENEGAS  
132 E BALBOA LN  
TUSTIN CA 92780

891-960-73 98  
MARICARMEN LOPEZ VELAZQUEZ /  
JIMENEZ, ISRAEL DEL ANGEL  
116 E BALBOA LN  
TUSTIN CA 92780

891-960-79 101  
JUAN REYES  
104 E BALBOA LN  
TUSTIN CA 92780

891-960-04 76  
JOSE DE JESUS CEJA / ZAMORA,  
CONCEPCION  
120 S CORTEZ LN  
TUSTIN CA 92780

891-960-10 79  
JOHANNA FERNANDEZ / MARIN,  
GUADALUPE  
111 E DE ANZA LN  
TUSTIN CA 92780

891-960-16 82  
JOSE R & VIRGINIA FLORES  
114 S PORTOLA LN  
TUSTIN CA 92780

891-960-20 84  
RESIDENT  
106 S PORTOLA LN  
TUSTIN CA 92780

891-960-39 87  
RICHARD KENT SUTCLIFF  
133 E CORONADO LN  
TUSTIN CA 92780

891-960-54 90  
LYNDA J CARTER  
129 S SERRA LN  
TUSTIN CA 92780

891-960-63 93  
FERMIN GARCIA GOICOCHEA / ALEMAN,  
JOVITA VALENZUELA  
136 E BALBOA LN  
TUSTIN CA 92780

891-960-69 96  
LUIS ARMANDO GALLEGOS / GONZALEZ,  
VICENTA  
124 E BALBOA LN  
TUSTIN CA 92780

891-960-76 99  
ERNESTO JUAREZ  
110 E BALBOA LN  
TUSTIN CA 92780

891-960-81 102  
CYNTHIA M & CHARLES E MURPHY  
138 S CORTEZ LN  
TUSTIN CA 92780

891-960-84 103  
RUBEN LOPEZ / VILLEGAS, TERESA  
132 S CORTEZ LN  
TUSTIN CA 92680

891-960-86 104  
CIPRIANO LEALALVAREZ  
128 S CORTEZ LN  
TUSTIN CA 92780

891-960-88 105  
CARLOS NOBLE  
107 E BALBOA LN  
TUSTIN CA 92780

891-960-89 106  
TIM D DO / HUYNH, LILLIAN  
109 E BALBOA LN  
TUSTIN CA 92780

891-960-90 107  
JOSE LUIS ORTIZ DIAZ  
111 E BALBOA LN  
TUSTIN CA 92780

891-960-91 108  
GERARDO ALONZO / HERNANDEZ, NANCY  
113 E BALBOA LN  
TUSTIN CA 92780

891-960-92 109  
ENRIQUE MARTINEZ / HUERTA, MARIA  
115 E BALBOA LN  
TUSTIN CA 92780

891-960-93 110  
GLADYS ELIZABETH CHAY / TORRES, JUAN  
HERNANDEZ  
116 SONORA LN  
TUSTIN CA 92780

891-960-97 111  
SALVADOR & MARIA MAGDALENO  
114 CORONA LN  
TUSTIN CA 92780

891-960-99 112  
MYRNA LOPEZ  
130 S PORTOLA LN  
TUSTIN CA 92780

891-961-00 113  
MARTIN PINEDA DAMIAN / PINEDA,  
ROSALINDA MONTUFAR  
128 S PORTOLA LN  
TUSTIN CA 92780

891-961-06 114  
RICHARD T VIDEGAIN / CARROLL, JIMMIE K  
1048 IRVINE AVE # 353  
NEWPORT BEACH CA 92660

891-961-06 114  
RESIDENT  
121 S PORTOLA LN  
TUSTIN CA 92780

891-961-10 115  
THOMPSON M JOYCE  
129 S PORTOLA LN  
TUSTIN CA 92780

891-961-11 116  
FABIOLA LEON / TAPIA, ROSARIO  
131 S PORTOLA LN  
TUSTIN CA 92780

891-961-12 117  
FELIPE GODOY  
133 S PORTOLA LN  
TUSTIN CA 92780

891-961-15 118  
JAVIER & JAVIER SOSA  
130 S COLOMBO LN  
TUSTIN CA 92780

891-961-16 119  
MIGUEL ARIZA ORTIZ / LEON, NOHEMI  
SANDOVAL  
128 S COLOMBO LN  
TUSTIN CA 92780

891-961-19 120  
CARLOS IVAN HERRERA PAZ  
122 S COLOMBO LN  
TUSTIN CA 92780

891-961-20 121  
WILLIAM S LEINBERGER  
120 S COLOMBO LN  
TUSTIN CA 92780

891-961-26 122  
JOSE DE JESUS RUIZ  
129 S COLOMBO LN  
TUSTIN CA 92780

891-961-29 123  
ANTONIO SANDOVAL & IRMA SANDOVAL  
EVARIZ  
135 S COLOMBO LN  
TUSTIN CA 92780

891-961-31 124  
MIGUEL LUCERO / HERRERA, VERONICA  
134 S DE SOTO LN  
TUSTIN CA 92780

891-961-32 125  
ALFREDO ORTIZ / BAUTISTA, AARON  
SALGADO  
15760 COBRA DR  
MORENO VALLEY CA 92551

891-961-32 125  
RESIDENT  
132 S DE SOTO LN  
TUSTIN CA 92780

891-961-37 126  
ADELA GONZALEZ SANTILLAN / FANILA,  
JESUS GOZALEZ  
122 S DE SOTO LN  
TUSTIN CA 92780

891-961-38 127  
LAUREANO & LAURA ESCALANTE  
138 E BALBOA LN  
TUSTIN CA 92780

891-961-44 128  
ELLEN E BUYS / FIENE, CHARLES  
129 S DE SOTO LN  
TUSTIN CA 92780

891-961-46 129  
KHAMKHEUANG SOUMPHONPHAKDY  
133 S DE SOTO LN  
TUSTIN CA 92780

891-961-49 130  
FERNANDO PEREZ MONDRAGON /  
MORENO, SANDRA ISELA PEREZ  
132 S SERRA LN  
TUSTIN CA 92780

891-961-50 131  
DONALD DORCSAK / HALL, JAMES  
130 S SERRA LN  
TUSTIN CA 92780

891-961-55 134  
PEDRO H & ROSA A GONZALES  
120 S SERRA LN  
TUSTIN CA 92780

891-961-62 137  
GREGORY D & MONA L CLARK  
138 E CORONADO LN  
TUSTIN CA 92780

891-961-66 140  
EMILIO ORTIZ / TREJO, JUDITH HERNANDEZ  
119 S SERRA LN  
TUSTIN CA 92780

891-961-76 143  
JANET LE / PHAM, CON VAN  
109 S COLOMBO LN  
TUSTIN CA 92780

891-962-00 146  
JOSE ISABEL & ROSALINDA BASILIO  
115 CORONA LN  
TUSTIN CA 92780

891-962-23 148  
IDALIA GARCIA / PINEDA, DANIEL  
113 SONORA LN  
TUSTIN CA 92780

891-969-07 151  
CLAUDIA A MORAN  
122 S PORTOLA LN  
TUSTIN CA 92780

891-969-13 154  
STEVEN BLAIR  
119 S DE SOTO LN  
TUSTIN CA 92780

891-969-18 157  
JOSE ALONSO SALINAS CARTAGENA /  
SALINAS, JARED ALONSO  
132 S COLOMBO LN  
TUSTIN CA 92780

891-961-53 132  
CARLOS OVIDIO CENTENO / AVILA, ISABEL  
CEJA  
124 S SERRA LN  
TUSTIN CA 92780

891-961-58 135  
KARLA & JUAN BERNABE  
147 E DE ANZA LN  
TUSTIN CA 92780

891-961-63 138  
KINGKEO CHAREUNSAK / DOUANGDARA,  
SATHAPHONE  
134 E CORONADO LN  
TUSTIN CA 92780

891-961-68 141  
ERNESTINA MONTUFAR PEREZ  
141 E DE ANZA LN  
TUSTIN CA 92780

891-961-86 144  
RENE HECTOR CARDOZA-DIAZ / JOVANY  
102 S COLOMBO LN  
TUSTIN CA 92780

891-962-13 147  
ROCIO CAUDILLO  
2206 MONTANA ST  
WEST COVINA CA 91792

891-969-03 149  
SAUL HERNANDEZ CAMARILLO /  
HERNANDEZ, KARINA ROMERO  
112 E BALBOA LN  
TUSTIN CA 92780

891-969-10 152  
JORGE OROZCO / ROCHA, EDITH  
145 E DE ANZA LN  
TUSTIN CA 92780

891-969-15 155  
LILLIANA PEREZ  
131 S DE SOTO LN  
TUSTIN CA 92780

891-969-20 158  
ROBERTO & GENOVEVA CASTILLO  
103 E DE ANZA LN  
TUSTIN CA 92780

891-961-54 133  
MARICELA LINARES-VASQUEZ  
122 S SERRA LN  
TUSTIN CA 92780

891-961-60 136  
DIANA N GRACIANO / MILLAN, OSCAR R  
151 E DE ANZA LN  
TUSTIN CA 92780

891-961-65 139  
MANUEL ALONSO / DE LA TORRE, MARIA  
GUADALUPE  
121 S SERRA LN  
TUSTIN CA 92680

891-961-75 142  
PONCE ANGEL SERGIO REYES / LAGUNAS S,  
MARIA LOURDES  
107 S COLOMBO LN  
TUSTIN CA 92780

891-961-97 145  
FRANK EUGENE & MIKEL RAE ROSAS  
108 E DE ANZA LN  
TUSTIN CA 92780

891-962-13 147  
RESIDENT  
109 E CORONADO LN  
TUSTIN CA 92780

891-969-06 150  
EDEN FAMILY TRUST  
135 S PORTOLA LN  
TUSTIN CA 92780

891-969-12 153  
DONALD & JULIE HAZELTON  
123 S COLOMBO LN  
TUSTIN CA 92780

891-969-16 156  
JENNIFER & MARIA HERNANDEZ  
124 S COLOMBO LN  
TUSTIN CA 92780

891-969-22 159  
CANDIDA ROSA ALANIS / RIVERA, BRENDA  
CARINA  
121 E CORONADO LN  
TUSTIN CA 92780

891-969-24 160  
VICTOR PEREZ  
125 S COLOMBO LN  
TUSTIN CA 92780

930-71-001 - 71-264 121-384  
CADIGAN 1901 FIRST LLC  
440 W FIRST ST # 201  
TUSTIN CA 92780

930-71-001 - 71-264 121-384  
RESIDENT  
1901 E 1ST ST APT 101  
SANTA ANA CA 92705

930-71-001 - 71-264 121-384  
RESIDENT  
1901 E 1ST ST APT 103  
SANTA ANA CA 92705

930-71-001 - 71-264 121-384  
RESIDENT  
1901 E 1ST ST APT 105  
SANTA ANA CA 92705

930-71-001 - 71-264 121-384  
RESIDENT  
1901 E 1ST ST APT 107  
SANTA ANA CA 92705

930-71-001 - 71-264 121-384  
RESIDENT  
1901 E 1ST ST APT 109  
SANTA ANA CA 92705

930-71-001 - 71-264 121-384  
RESIDENT  
1901 E 1ST ST APT 111  
SANTA ANA CA 92705

930-71-001 - 71-264 121-384  
RESIDENT  
1901 E 1ST ST APT 113  
SANTA ANA CA 92705

930-71-001 - 71-264 121-384  
RESIDENT  
1901 E 1ST ST APT 115  
SANTA ANA CA 92705

930-71-001 - 71-264 121-384  
RESIDENT  
1901 E 1ST ST APT 117  
SANTA ANA CA 92705

930-71-001 - 71-264 121-384  
RESIDENT  
1901 E 1ST ST APT 119  
SANTA ANA CA 92705

930-71-001 - 71-264 121-384  
RESIDENT  
1901 E 1ST ST APT 120  
SANTA ANA CA 92705

930-71-001 - 71-264 121-384  
RESIDENT  
1901 E 1ST ST APT 122  
SANTA ANA CA 92705

930-71-001 - 71-264 121-384  
RESIDENT  
1901 E 1ST ST APT 124  
SANTA ANA CA 92705

930-71-001 - 71-264 121-384  
RESIDENT  
1901 E 1ST ST APT 126  
SANTA ANA CA 92705

930-71-001 - 71-264 121-384  
RESIDENT  
1901 E 1ST ST APT 130  
SANTA ANA CA 92705

930-71-001 - 71-264 121-384  
RESIDENT  
1901 E 1ST ST APT 131  
SANTA ANA CA 92705

930-71-001 - 71-264 121-384  
RESIDENT  
1901 E 1ST ST APT 133  
SANTA ANA CA 92705

930-71-001 - 71-264 121-384  
RESIDENT  
1901 E 1ST ST APT 136  
SANTA ANA CA 92705

930-71-001 - 71-264 121-384  
RESIDENT  
1901 E 1ST ST APT 138  
SANTA ANA CA 92705

930-71-001 - 71-264 121-384  
RESIDENT  
1901 E 1ST ST APT 140  
SANTA ANA CA 92705

930-71-001 - 71-264 121-384  
RESIDENT  
1901 E 1ST ST APT 141  
SANTA ANA CA 92705

930-71-001 - 71-264 121-384  
RESIDENT  
1901 E 1ST ST APT 142  
SANTA ANA CA 92705

930-71-001 - 71-264 121-384  
RESIDENT  
1901 E 1ST ST APT 143  
SANTA ANA CA 92705

930-71-001 - 71-264 121-384  
RESIDENT  
1901 E 1ST ST APT 144  
SANTA ANA CA 92705

930-71-001 - 71-264 121-384  
RESIDENT  
1901 E 1ST ST APT 145  
SANTA ANA CA 92705

930-71-001 - 71-264 121-384  
RESIDENT  
1901 E 1ST ST APT 146  
SANTA ANA CA 92705

930-71-001 - 71-264 121-384  
RESIDENT  
1901 E 1ST ST APT 147  
SANTA ANA CA 92705

930-71-001 - 71-264 121-384  
RESIDENT  
1901 E 1ST ST APT 148  
SANTA ANA CA 92705

















930-71-001 - 71-264 121-384  
RESIDENT  
1903 E 1ST ST APT 391  
SANTA ANA CA 92705

930-71-001 - 71-264 121-384  
RESIDENT  
1903 E 1ST ST APT 392  
SANTA ANA CA 92705

930-71-001 - 71-264 121-384  
RESIDENT  
1903 E 1ST ST APT 393  
SANTA ANA CA 92705

930-71-001 - 71-264 121-384  
RESIDENT  
1903 E 1ST ST APT 394  
SANTA ANA CA 92705

930-71-001 - 71-264 121-384  
RESIDENT  
1903 E 1ST ST APT 483  
SANTA ANA CA 92705

930-71-001 - 71-264 121-384  
RESIDENT  
1903 E 1ST ST APT 484  
SANTA ANA CA 92705

930-71-001 - 71-264 121-384  
RESIDENT  
1903 E 1ST ST APT 485  
SANTA ANA CA 92705

930-71-001 - 71-264 121-384  
RESIDENT  
1903 E 1ST ST APT 486  
SANTA ANA CA 92705

930-71-001 - 71-264 121-384  
RESIDENT  
1903 E 1ST ST APT 487  
SANTA ANA CA 92705

930-71-001 - 71-264 121-384  
RESIDENT  
1903 E 1ST ST APT 488  
SANTA ANA CA 92705

930-71-001 - 71-264 121-384  
RESIDENT  
1903 E 1ST ST APT 489  
SANTA ANA CA 92705

930-71-001 - 71-264 121-384  
RESIDENT  
1903 E 1ST ST APT 490  
SANTA ANA CA 92705

930-71-001 - 71-264 121-384  
RESIDENT  
1903 E 1ST ST APT 491  
SANTA ANA CA 92705

930-71-001 - 71-264 121-384  
RESIDENT  
1903 E 1ST ST APT 492  
SANTA ANA CA 92705

930-71-001 - 71-264 121-384  
RESIDENT  
1903 E 1ST ST APT 493  
SANTA ANA CA 92705

930-71-001 - 71-264 121-384  
RESIDENT  
1903 E 1ST ST APT 494  
SANTA ANA CA 92705

930-71-001 - 71-264 121-384  
RESIDENT  
1903 E 1ST ST APT 583  
SANTA ANA CA 92705

930-71-001 - 71-264 121-384  
RESIDENT  
1903 E 1ST ST APT 584  
SANTA ANA CA 92705

930-71-001 - 71-264 121-384  
RESIDENT  
1903 E 1ST ST APT 585  
SANTA ANA CA 92705

930-71-001 - 71-264 121-384  
RESIDENT  
1903 E 1ST ST APT 586  
SANTA ANA CA 92705

930-71-001 - 71-264 121-384  
RESIDENT  
1903 E 1ST ST APT 587  
SANTA ANA CA 92705

930-71-001 - 71-264 121-384  
RESIDENT  
1903 E 1ST ST APT 588  
SANTA ANA CA 92705

930-71-001 - 71-264 121-384  
RESIDENT  
1903 E 1ST ST APT 589  
SANTA ANA CA 92705

930-71-001 - 71-264 121-384  
RESIDENT  
1903 E 1ST ST APT 590  
SANTA ANA CA 92705

930-71-001 - 71-264 121-384  
RESIDENT  
1903 E 1ST ST APT 591  
SANTA ANA CA 92705

930-71-001 - 71-264 121-384  
RESIDENT  
1903 E 1ST ST APT 592  
SANTA ANA CA 92705

930-71-001 - 71-264 121-384  
RESIDENT  
1903 E 1ST ST APT 593  
SANTA ANA CA 92705

930-71-001 - 71-264 121-384  
RESIDENT  
1903 E 1ST ST APT 594  
SANTA ANA CA 92705

930-71-001 - 71-264 121-384  
OCCUPANT  
1901 E 1ST ST OFC  
SANTA ANA CA 92705

935-67-001 385  
MIGUEL & MARIA A GUZMAN  
16882 STONE GLASS AVE  
TUSTIN CA 92780

935-67-002 386  
MICHAEL REDIESS  
16884 STONEGLASS  
TUSTIN CA 92780

935-67-004 388  
OCCUPANT  
16888 STONEGLASS  
TUSTIN CA 92780

935-67-006 390  
OCCUPANT  
16894 STONEGLASS  
TUSTIN CA 92780

935-67-009 393  
RICHARD A VUICH/WENXIN KONG  
16908 STONEGLASS  
TUSTIN CA 92780

935-67-012 396  
DENISSE GALVAN  
16902 STONEGLASS  
TUSTIN CA 92780

935-67-015 399  
JOEL ROBERT MCLEOD  
16914 STONEGLASS  
TUSTIN CA 92780

935-67-017 401  
ROBERT E & DEBORAH A HENDRICKS  
16918 STONEGLASS  
TUSTIN CA 92780

935-67-020 404  
BERTHA VALDEZ  
16924 STONEGLASS  
TUSTIN CA 92780

935-67-022 406  
OCCUPANT  
16930 STONEGLASS  
TUSTIN CA 92780

935-67-025 409  
SCOTT D MILLER  
34558 CALLE PORTOLA  
CAPO BEACH CA 92624

935-67-003 387  
EDWIN SANCHEZ  
16886 STONEGLASS  
TUSTIN CA 92780

935-67-005 389  
SANDRA BASABE  
16892 STONEGLASS  
TUSTIN CA 92780

935-67-007 391  
FRANK SITU  
16896 STONEGLASS  
TUSTIN CA 92780

935-67-010 394  
RYAN L YAO  
16906 STONEGLASS  
TUSTIN CA 92780

935-67-013 397  
KENNETH G WHITE  
16910 STONEGLASS  
TUSTIN CA 92780

935-67-016 400  
JEFFREY S GORMIN  
28142 HIBISCUS  
LAGUNA NIGUEL CA 92677

935-67-018 402  
DUNG NGUYEN  
16920 STONEGLASS  
TUSTIN CA 92780

935-67-021 405  
ELIZABETH ANN FISCHER  
16932 STONEGLASS  
TUSTIN CA 92780

935-67-023 407  
PATRICIA ARENAS/CESAR NORIEGA  
16928 STONEGLASS  
TUSTIN CA 92780

935-67-025 409  
OCCUPANT  
15192 MOIR CT  
TUSTIN CA 92780

935-67-004 388  
RICHARD ALAN & KAREN ILENE HEALY  
PO BOX 3486  
TUSTIN CA 92781

935-67-006 390  
JOHN & VIKTORIA M ORTEGA  
274 S CITRUS  
ORANGE CA 92868

935-67-008 392  
JOSEPH H & LUCIA BANKS  
16898 STONEGLASS  
TUSTIN CA 92780

935-67-011 395  
LING LIU/AZLIN KENETH ZEBALLOS  
16904 STONEGLASS  
TUSTIN CA 92780

935-67-014 398  
CHARLES JOSEPH & SANDRA A PERRERA  
16912 STONEGLASS  
TUSTIN CA 92780

935-67-016 400  
OCCUPANT  
16916 STONEGLASS  
TUSTIN CA 92780

935-67-019 403  
ROBERTO VEGA ROSAS/OBDULIA PEREZ DE  
LA CRUZ  
16922 STONEGLASS  
TUSTIN CA 92780

935-67-022 406  
MARIA DOLORES RAMOS  
4656 FISHER ST  
LOS ANGELES CA 90022

935-67-024 408  
GERALD J CANALE  
16926 STONEGLASS  
TUSTIN CA 92780

935-67-026 410  
LUIS R & MARIA E MARTINEZ  
15194 MOIR CT  
TUSTIN CA 92780

935-67-027 411  
CURTIS J & CONNY M CRAIG  
15196 MOIR CT  
TUSTIN CA 92780

935-67-028 412  
JESSICA UYEN HOANG  
15198 MOIR CT  
TUSTIN CA 92780

935-67-029 413  
MARICELA ALVARADO  
15182 MOIR CT  
TUSTIN CA 92680

935-67-030 414  
ALBERTO RIOS OROZCO  
15184 MOIR CT  
TUSTIN CA 92780

935-67-031 415  
KEITH C TANG  
PO BOX 4084  
IRVINE CA 92616

935-67-031 415  
OCCUPANT  
15186 MOIR CT  
TUSTIN CA 92780

935-67-032 416  
RUBEN TORRES PARRA  
15188 MOIR CT  
TUSTIN CA 92870

935-67-033 417  
BARRY DENLINGER  
1636 E EDINGER AVE  
SANTA ANA CA 92705

935-67-033 417  
OCCUPANT  
15172 MOIR CT  
TUSTIN CA 92780

935-67-034 418  
YUSUKE KAWAMATA  
15174 MOIR CT  
TUSTIN CA 92780

935-67-035 419  
KYLE ROGERS  
15176 MOIR CT  
TUSTIN CA 92780

935-67-036 420  
TIMOTHY J HOWARD  
2380 CLAUDIA ST  
CORONA CA 92882

935-67-036 420  
OCCUPANT  
15178 MOIR CT  
TUSTIN CA 92780

935-67-037 421  
DIANE A ASTADURIAN  
19561 GRANDVIEW CIR  
HUNTINGTON BEACH CA 92648

935-67-037 421  
OCCUPANT  
15162 MOIR CT  
TUSTIN CA 92780

935-67-038 422  
DENNIS OLIVA  
16897 STONEGLASS  
TUSTIN CA 92780

935-67-038 422  
OCCUPANT  
15164 MOIR CT  
TUSTIN CA 92780

935-67-039 423  
KATHERYN L WHITTAKER  
PO BOX 25202  
LOS ANGELES CA 90025

935-67-039 423  
OCCUPANT  
15166 MOIR CT  
TUSTIN CA 92780

935-67-040 424  
GEORGE MICHAEL PONG  
5585 CORAL REEF AVE  
LA JOLLA CA 92037

935-67-040 424  
OCCUPANT  
15168 MOIR CT  
TUSTIN CA 92780

935-67-041 425  
ERICK DEL RAZO  
15152 MOIR CT  
TUSTIN CA 92780

935-67-042 426  
JACK TISOR  
15154 MOIR CT  
TUSTIN CA 92780

935-67-043 427  
JOSE ALBERTO PADILLA  
15156 MOIR CT  
TUSTIN CA 92780

935-67-044 428  
ROSE GALLUZZO  
15158 MOIR CT  
TUSTIN CA 92780

935-67-045 429  
ESTHER RAMIREZ-VEGA/RAFAEL JR VEGA  
15142 MOIR CT  
TUSTIN CA 92780

935-67-046 430  
SANDRA L CHAIBUN  
15144 MOIR CT  
TUSTIN CA 92780

935-67-047 431  
AMANDA SHIRK  
15146 MOIR CT  
TUSTIN CA 92780

935-67-048 432  
HUY & ELIZABETH NGUYEN  
15148 MOIR CT  
TUSTIN CA 92780

935-67-049 433  
ANDRANEK D ASTADURIAN  
1835 N WILSON AVE  
UPLAND CA 91784



935-67-049 433  
OCCUPANT  
15138 MOIR CT  
TUSTIN CA 92780

935-67-052 436  
DAVID M FLYNN  
15132 MOIR CT  
TUSTIN CA 92780

935-67-054 438  
BARBARA E & VINCENT J KRAUS  
9913 SAGE CIR  
FOUNTAIN VALLEY CA 92708

935-67-056 440  
BONNIE L MCLAREN  
16909 DONWEST  
TUSTIN CA 92780

935-67-059 443  
EPUNI HINNEBUSCH  
16905 DONWEST  
TUSTIN CA 92780

935-67-061 445  
PETER THANH NGUYEN/THUY THANH VU  
16883 DONWEST  
TUSTIN CA 92780

935-67-064 448  
ROXANA COVARRUBIAS  
720 S LYON ST #323  
SANTA ANA CA 92705

935-67-066 450  
MAILINH THI & AU THANH-HUY DO  
16873 DONWEST  
TUSTIN CA 92780

935-67-069 453  
PAULETTE A BRIZZOLARA  
16861 DONWEST  
TUSTIN CA 92780

935-67-072 456  
ZINZUN ALFONSO & GILDA NOEMI  
16867 DONWEST  
TUSTIN CA 92780

935-67-050 434  
MARK S STOFFER  
15136 MOIR CT  
TUSTIN CA 92780

935-67-053 437  
IAN & KATHERINE JAMES  
16915 DONWEST  
TUSTIN CA 92690

935-67-054 438  
OCCUPANT  
16913 DONWEST  
TUSTIN CA 92780

935-67-057 441  
RICHARD ANTHONY & ROSE MARIE BAKO  
16901 DONWEST PL  
TUSTIN CA 92780

935-67-060 444  
MARGARET P DRUILHET  
1708 SAVANNAH DR NE  
RIO RANCHO NM 87144

935-67-062 446  
WENDY LYNN WYNDHAMSMITH  
16881 DONWEST  
TUSTIN CA 92780

935-67-064 448  
OCCUPANT  
16877 DONWEST  
TUSTIN CA 92780

935-67-067 451  
NORA CASTRO  
16871 DONWEST  
TUSTIN CA 92780

935-67-070 454  
MARILYN B LEWIS  
16863 DONWEST  
TUSTIN CA 92780

935-67-073 457  
ANNE WENG  
16878 DONWEST  
TUSTIN CA 92780

935-67-051 435  
JAYASINGHA ARACHCHIGE &  
MADDAKANDAGE JAYASINGHA  
15134 MOIR CT  
TUSTIN CA 92780

935-67-053 437  
OCCUPANT  
16915 DONWEST  
TUSTIN CA 92780

935-67-055 439  
AGNES A AIDOO  
16911 DONWEST  
TUSTIN CA 92780

935-67-058 442  
TRONGHIEU DANG/MICHELLE TANG LE  
16027 BROOKHURST ST I-172  
FOUNTAIN VALLEY CA 92708

935-67-060 444  
OCCUPANT  
16907 DONWEST  
TUSTIN CA 92780

935-67-063 447  
ANGEL & SAYRA ANDRADE  
16879 DONWEST  
TUSTIN CA 92780

935-67-065 449  
RAZIEL G BRAVO  
16875 DONWEST  
TUSTIN CA 92780

935-67-068 452  
JEAN M STRINGER  
16869 DONWEST  
TUSTIN CA 92780

935-67-071 455  
PATRICIA GARCIA  
16865 DONWEST  
TUSTIN CA 92780

935-67-074 458  
SALVADOR RIVERA PEREZ  
16876 DONWEST  
TUSTIN CA 92780

935-67-075 459  
ARIEL OLIVIA VAEA  
16874 DONWEST  
TUSTIN CA 92780

935-67-077 461  
OCCUPANT  
16882 DONWEST  
TUSTIN CA 92780

935-67-079 463  
RONALD L DROLET  
9162 EL RITO DR  
VILLA PARK CA 92861

935-67-081 465  
JOSE G & FABIOLA A PEREZ  
16908 DONWEST  
TUSTIN CA 92780

935-67-083 467  
OCCUPANT  
16904 DONWEST  
TUSTIN CA 92780

935-67-086 470  
JOANN DARCEL ROIZ  
15185 MOIR CT  
TUSTIN CA 92780

935-67-088 472  
ISABEL S PLACENCIO  
15181 MOIR CT  
TUSTIN CA 92780

935-67-091 475  
LISA MICHELLE GIUSIANA  
16893 STONEGLASS  
TUSTIN CA 92780

935-67-094 478  
MERCEDE SCHROEDER  
16883 STONEGLASS  
TUSTIN CA 92780

935-67-097 481  
TIMOTHY M BUNCH  
16868 DONWEST  
TUSTIN CA 92780

935-67-076 460  
ERIC & LUCINDA TAFOLLA  
16872 DONWEST  
TUSTIN CA 92780

935-67-078 462  
DEVON ROSS GERWOLLS/MARY LINH MY  
TRAN  
1090 MISSION DR  
COSTA MESA CA 92626

935-67-079 463  
OCCUPANT  
16886 DONWEST  
TUSTIN CA 92780

935-67-082 466  
ELIZANDRO M & ANGELICA ARVIZU  
16906 DONWEST  
TUSTIN CA 92780

935-67-084 468  
ARMANDO PENA  
16902 DONWEST  
TUSTIN CA 92780

935-67-087 471  
NORIKO BURNHAM  
3179 SICILY AVE  
COSTA MESA CA 92626

935-67-089 473  
DENNIS & MARY OLIVA  
16897 STONEGLASS  
TUSTIN CA 92780

935-67-092 476  
ROSANNE L GIBSON  
16891 STONEGLASS  
TUSTIN CA 92780

935-67-095 479  
SUN WON KIM  
16885 STONEGLASS  
TUSTIN CA 92780

935-67-098 482  
YAMILA OH  
16866 DONWEST  
TUSTIN CA 92780

935-67-077 461  
MARLENE J MC VAY  
1952 PENNINGTON AVE  
TUSTIN CA 92780

935-67-078 462  
OCCUPANT  
16884 DONWEST  
TUSTIN CA 92780

935-67-080 464  
DENNIS GILMORE/CINDI QUALLS  
16888 DONWEST  
TUSTIN CA 92780

935-67-083 467  
GWYNNEDD M NEELON  
18722 PATRICIAN DR  
VILLA PARK CA 92861

935-67-085 469  
AILEEN DIEM-HANG NGUYEN/KYLE DANH  
PHAM  
15187 MOIR CT  
TUSTIN CA 92780

935-67-087 471  
OCCUPANT  
15183 MOIR CT  
TUSTIN CA 92780

935-67-090 474  
GLORIA B ZEMITIS  
16895 STONEGLASS  
TUSTIN CA 92780

935-67-093 477  
XIANG LI  
16881 STONEGLASS  
TUSTIN CA 92780

935-67-096 480  
PAMELA K KENNARD  
16887 STONEGLASS  
TUSTIN CA 92780

935-67-099 483  
EMILIANO & MARGARITA MONJE  
16864 DONWEST  
TUSTIN CA 92780

935-67-100 484  
MARIA J SOTO SAMANTHA  
16862 DONWEST  
TUSTIN CA 92780

935-67-101 485  
JOSELIZA C KITCHELL  
16867 STONEGLASS  
TUSTIN CA 92780

935-67-102 486  
KAURENE A & JOHN PEREZ  
16865 STONEGLASS  
TUSTIN CA 92780

935-67-103 487  
ROBERT J ACOSTA  
17462 VILLAGE DR  
TUSTIN CA 92780

935-67-103 487  
OCCUPANT  
16863 STONEGLASS  
TUSTIN CA 92780

935-67-104 488  
MIGUEL SOLIS  
16861 STONEGLASS  
TUSTIN CA 92780

937-91-190,191,192 489-491  
2010 EAST FIRST STREET LLC  
19854 VISTA HERMOSA  
WALNUT CA 91789

937-91-190 489  
OCCUPANT  
2010 E 1ST ST 100  
SANTA ANA CA 92705

937-91-191 490  
OCCUPANT  
2010 E 1ST ST 110  
SANTA ANA CA 92705

937-91-192 491  
OCCUPANT  
2010 E 1ST ST 115  
SANTA ANA CA 92705

937-91-193,194 492,493  
JEAN LY  
2621 S BRISTOL ST # 100  
SANTA ANA CA 92704

937-91-193 492  
OCCUPANT  
2010 E 1ST ST 120  
SANTA ANA CA 92705

937-91-194 493  
OCCUPANT  
2010 E 1ST ST 125  
SANTA ANA CA 92705

937-91-195 494  
REZA SHAFEE  
12 SUNPEAK  
IRVINE CA 92603

937-91-195 494  
OCCUPANT  
2010 E 1ST ST # 130  
SANTA ANA CA 92705

937-91-196-198 495-497  
FIRST STREET MEDICAL PLAZA PARTNERS  
LLC  
6 HARBOR PT  
CORONA DEL MAR CA 92625

937-91-196 495  
OCCUPANT  
2010 E 1ST ST # 140  
SANTA ANA CA 92705

937-91-197 496  
OCCUPANT  
2010 E 1ST ST # 150  
SANTA ANA CA 92705

937-91-198 497  
OCCUPANT  
2010 E 1ST ST # 155  
SANTA ANA CA 92705

937-91-199 498  
OCCUPANT  
2010 E 1ST ST # 160  
SANTA ANA CA 92705

937-91-199-201 498-500  
MICHAEL A SHEETY  
1400 PACIFIC COAST HWY # 102  
HUNTINGTON BEACH CA 92648

937-91-200 499  
OCCUPANT  
2010 E 1ST ST # 165  
SANTA ANA CA 92705

937-91-201 500  
OCCUPANT  
2010 E 1ST ST # 170  
SANTA ANA CA 92705

937-91-202-206 501-505  
PINE WOODS EQUITY GROUP LLC  
2010 E 1ST ST # 210  
SANTA ANA CA 92705

937-91-202 501  
OCCUPANT  
2010 E 1ST ST # 200  
SANTA ANA CA 92705

937-91-204 503  
OCCUPANT  
2010 E 1ST ST # 215  
SANTA ANA CA 92705

937-91-205 504  
OCCUPANT  
2110 E 1ST ST # 220  
SANTA ANA CA 92705

937-91-206 505  
OCCUPANT  
2010 E 1ST ST # 225  
SANTA ANA CA 92705

937-91-207 506  
DENTAL LASER SPECIALIST LLC  
2010 1ST ST # 230  
SANTA ANA CA 92705

937-91-208 507  
FIRST STREET SANTA ANA PROPERTYT LLC  
2010 E 1ST ST # 240  
SANTA ANA CA 92705

937-91-209,210 508,509  
ARDEAL PINDU LLC  
2010 E 1ST ST # 250  
SANTA ANA CA 92705

937-91-210 509  
OCCUPANT  
2010 E 1ST ST # 255  
SANTA ANA CA 92705

937-91-211 510  
UNIQUE CARE PROPERTY LLC  
2 ROCKY POINT RD  
CORONA DEL MAR CA 92625

937-91-211 510  
OCCUPANT  
2010 E 1ST ST # 260  
SANTA ANA CA 92705

937-91-212 511  
UNIQUE CARE PROPERTY LLC  
2 ROCKY POINT RD  
CORONA DEL MAR CA 92625

937-91-212 511  
OCCUPANT  
2010 E 1ST ST # 265  
SANTA ANA CA 92705

937-91-213 512  
ELAN INSTITUTE LLC  
21163 NEWPORT COAST DR # 472  
NEWPORT COAST CA 92657

937-91-213 512  
OCCUPANT  
2010 E 1ST ST # 270  
SANTA ANA CA 92705



# 2202 FIRST STREET SANTA ANA, CA

## DESIGN REVIEW SUBMITTAL DECEMBER 8, 2022

### SHEET INDEX

G1.0 COVER SHEET

#### CIVIL ENGINEERING

- C1 PRELIMINARY SITE PLAN
- C2 PRELIMINARY GRADING PLAN
- C3 PRELIMINARY UTILITY PLAN

#### ARCHITECTURE

- A1.0 CONCEPTUAL SITE PLAN
- A1.1 CONCEPTUAL FIRE PLAN
- A1.2 CONCEPTUAL SECTIONS
- A1.3 3D AERIAL VIEW ROOF EXHIBIT
- A1.4 3D AERIAL VIEWS
- A1.5 CONCEPTUAL TRASH MANAGEMENT PLAN
- A2.0 CONCEPTUAL BUILDING PLAN
- A2.1 CONCEPTUAL BUILDING CODE ANALYSIS
- A3.0 CONCEPTUAL UNIT PLANS
- A4.0 CONCEPTUAL BUILDING ELEVATIONS
- A4.1 CONCEPTUAL TRANSPARENCY STUDY
- A5.0 CONCEPTUAL 3D VIEWS
- A6.0 CONCEPTUAL MATERIAL & COLOR BOARD

#### LANDSCAPE ARCHITECTURE

- L1 LANDSCAPE PLAN

<b>PROJECT ADDRESS:</b>	2202 E. FIRST STREET SANTA ANA, CA	
<b>APN:</b>	402-181-04	
<b>GENERAL PLAN/LAND USE DESIGNATION</b>	DISTRICT CENTER/ZONED GENERAL CENTER COMMERCIAL WITH THE METRO EAST MIXED-USE OVERLAY ZONE (MEMU)	
<b>PROPOSED USE:</b>	MIXED-USE	
<b>PROPOSED TYPE OF CONSTRUCTION:</b>	5 STORIES TYPE III OVER 1 LEVEL OF RAISED PODIUM	
<b>AUTOMATIC SPRINKLER:</b>	YES	
<b>LOT SIZE:</b>	56,047 SF (1.29 AC)	
<b>LOT COVERAGE:</b>	N/A	
<b>OCCUPANCY TYPE:</b>	R-2, A-3, B, M, S-2	
<b>NUMBER OF UNITS:</b>	172 UNITS	
<b>DENSITY:</b>	172 UNITS / 1.29 ACRES = 133 DU/AC	
<b>GROSS FLOOR AREA (INCLUDING COMMON AREAS)</b>	<b>BUILDING (SF)</b>	
1ST FLOOR/ GROUND LEVEL	25,085	
2ND FLOOR	23,155	
3RD FLOOR	23,155	
4TH FLOOR	23,155	
5TH FLOOR	23,155	
6TH FLOOR	23,155	
<b>GRAND TOTAL:</b>	<b>140,860</b>	
<b>UNIT MIX:</b>		
STUDIO	119 UNITS (69%)	
1-BEDROOM	50 UNITS (29%)	
2-BEDROOM (MANAGER'S UNIT)	3 UNITS (2%)	
<b>TOTAL</b>	<b>172 UNITS</b>	
<b>PUBLICLY ACCESSIBLE OPEN SPACE</b>	<b>REQUIRED</b>	<b>PROVIDED</b>
15% OF TOTAL SITE AREA	8,409 SF	1,439 SF
<b>PRIVATE COMMON OPEN SPACE</b>	<b>REQUIRED</b>	<b>PROVIDED</b>
90 SF PER UNIT	15,480 SF	ENCLOSED AMENITIES - 2,465 SF BALCONY - 1,875 SF (#375 SF/FLR)
<b>NUMBER OF STORIES:</b>	5 STORIES OVER 1 LEVEL OF PODIUM	
<b>VEHICLE PARKING:</b>	<b>PROVIDED:</b>	
REQUIRED: 0.5/UNIT = 86 STALLS	ON GRADE OFF-STREET PARKING: 40 STALLS PROVIDED IN BUILDING (INCLUDING HANDICAP): 48 STALLS	
	<b>TOTAL PROVIDED: 88 STALLS (INCLUDING HANDICAP)</b>	
<b>HANDICAP STALLS:</b>	<b>PROVIDED:</b>	
PROVIDED:	ON GRADE OFF-STREET PARKING: 2 STALLS PODIUM - 4 STALLS	
	<b>TOTAL PROVIDED: 6 STALLS</b>	
<b>SETBACK &amp; HEIGHT REQUIREMENTS:</b>	<b>REQUIRED</b>	<b>PROVIDED</b>
FRONT YARD	10'-0"	42'-0"
WEST	5'-0"	1'-0"
EAST	5'-0"	12'-2"
REAR 1ST	15'-0"	178'-0"
HEIGHT (TOP OF STAIR)	NO MAX	68'-0"

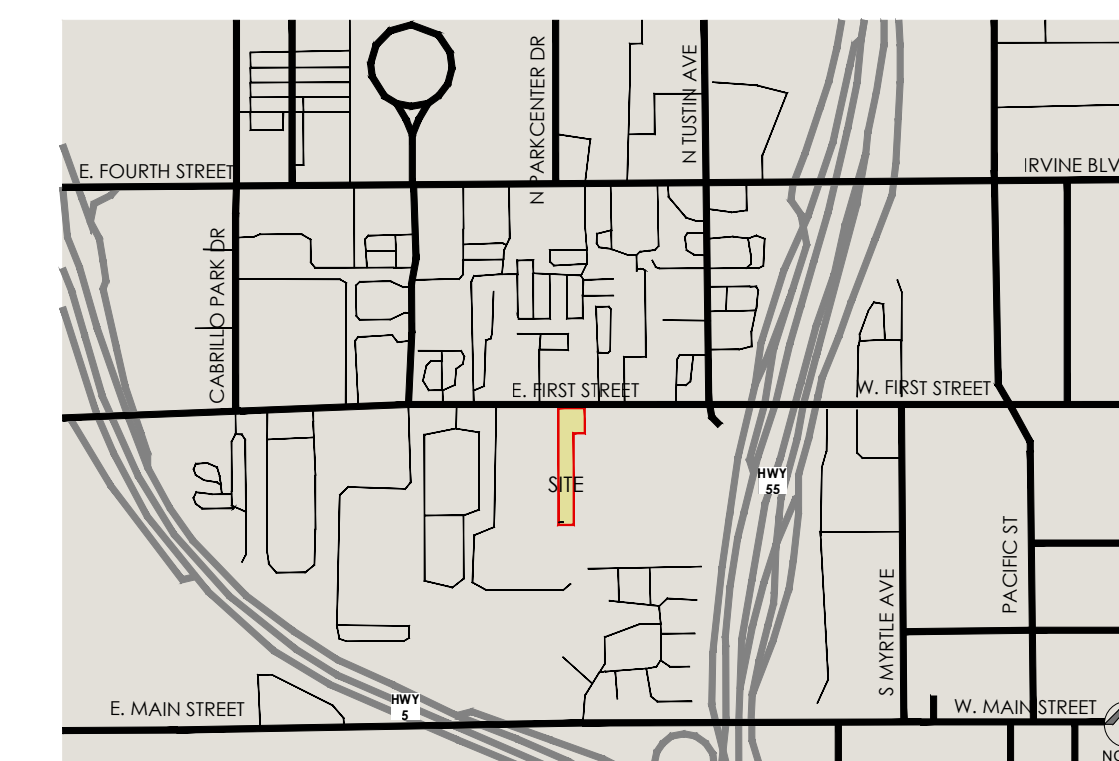
### PROJECT TEAM

**APPLICANT/OWNER:**  
**AMG & ASSOCIATES, LLC**  
PO BOX 260770  
ENCINO, CA 92663  
(818) 380-91426  
Contact: Alexis Gevorgian  
agevorgian@amglan.com

**RESIDENTIAL ARCHITECT:**  
**AO ARCHITECTS**  
144 North Orange Street  
Orange, CA 92866  
(714) 639-9860  
Contact:  
Ioanna Magiati  
ioannam@aoarchitects.com  
Drishiti Shah  
drishtis@aoarchitects.com

**CIVIL ENGINEER:**  
**C&V CONSULTING, INC**  
9830 Irvine Center Drive,  
Irvine, CA 92618  
(949) 916-3800  
Contact:  
Lucas Boucher  
lboucher@cvc-inc.net  
Joy Hendricks  
jhendricks@cvc-inc.net

**LANDSCAPE ARCHITECT:**  
**THOMAS H. PHELPS**  
PO Box 170129,  
Boise, ID 83717  
(530) 892-8897  
Contact:  
Thomas Phelps  
thp@idlainc.net



VICINITY MAP

2202 FIRST STREET  
AMG & ASSOCIATES

SANTA ANA, CA

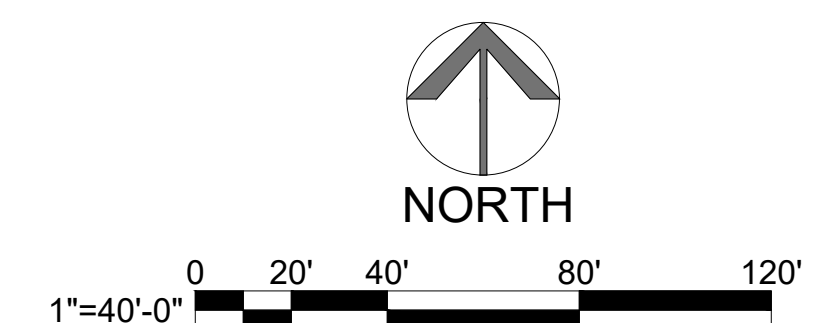
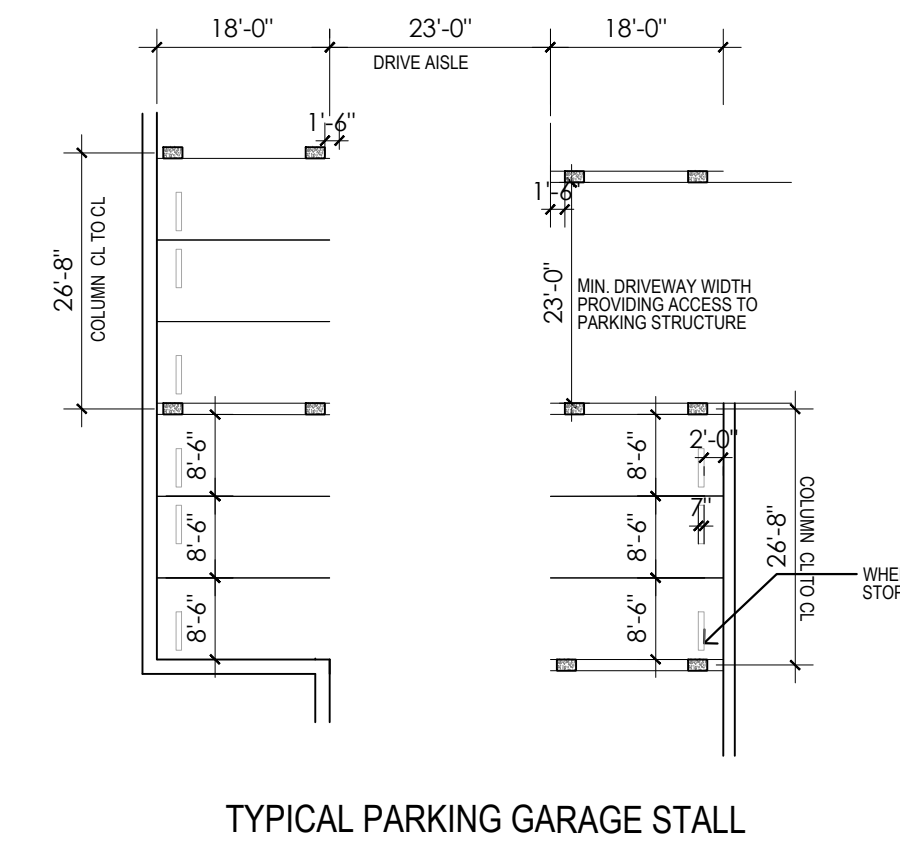
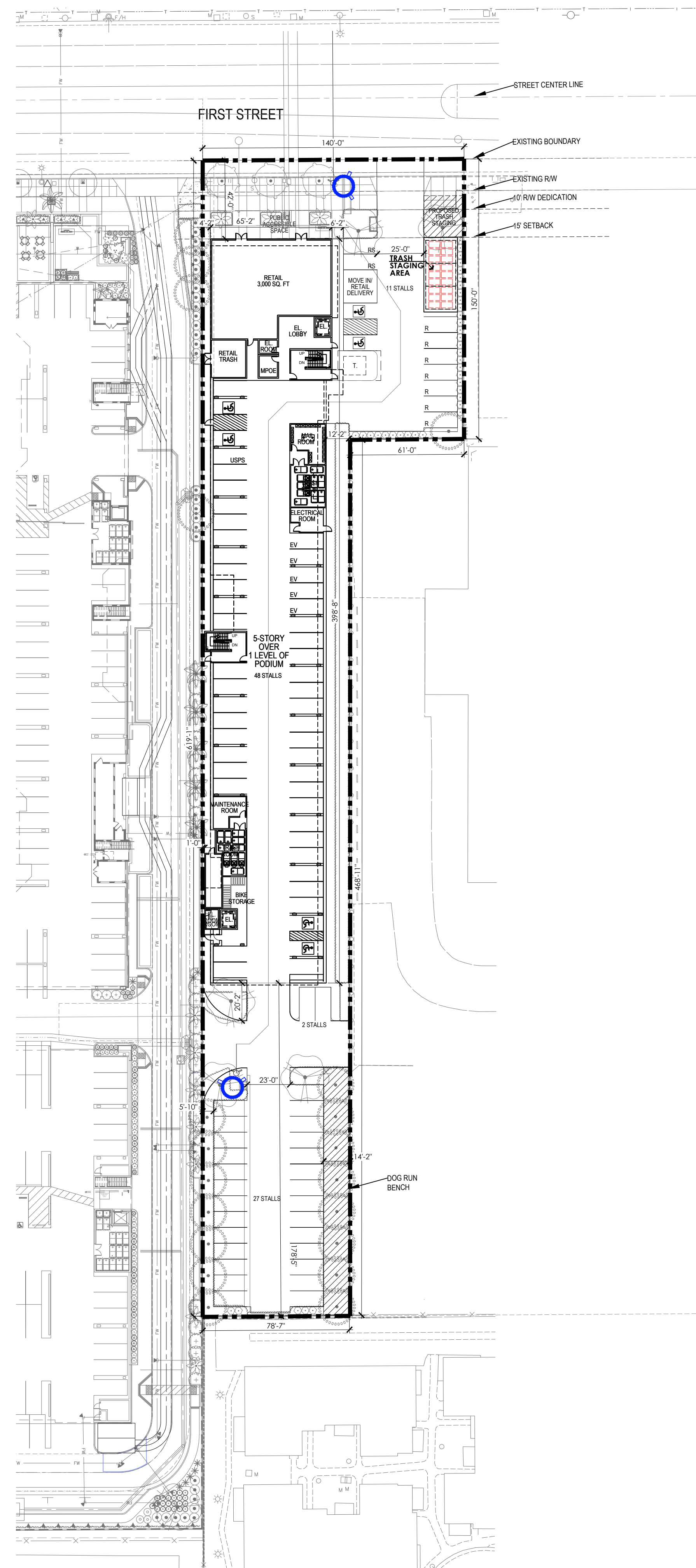
DATE: 12/08/2022  
JOB NO.: 2019-556  
**AO ARCHITECTS**  
144 NORTH ORANGE ST., ORANGE, CA 92866  
(714) 639-9860

G1.0



**LEGEND**

- R RETAIL
- RS RIDESHARE
- EV ELECTRIC VEHICLE CHARGING STATION



**2202 FIRST STREET**  
**AMG & ASSOCIATES**

SANTA ANA, CA

CONCEPTUAL SITE PLAN

**A1.0**

DATE: 12/08/2022  
 JOB NO.: 2019-556

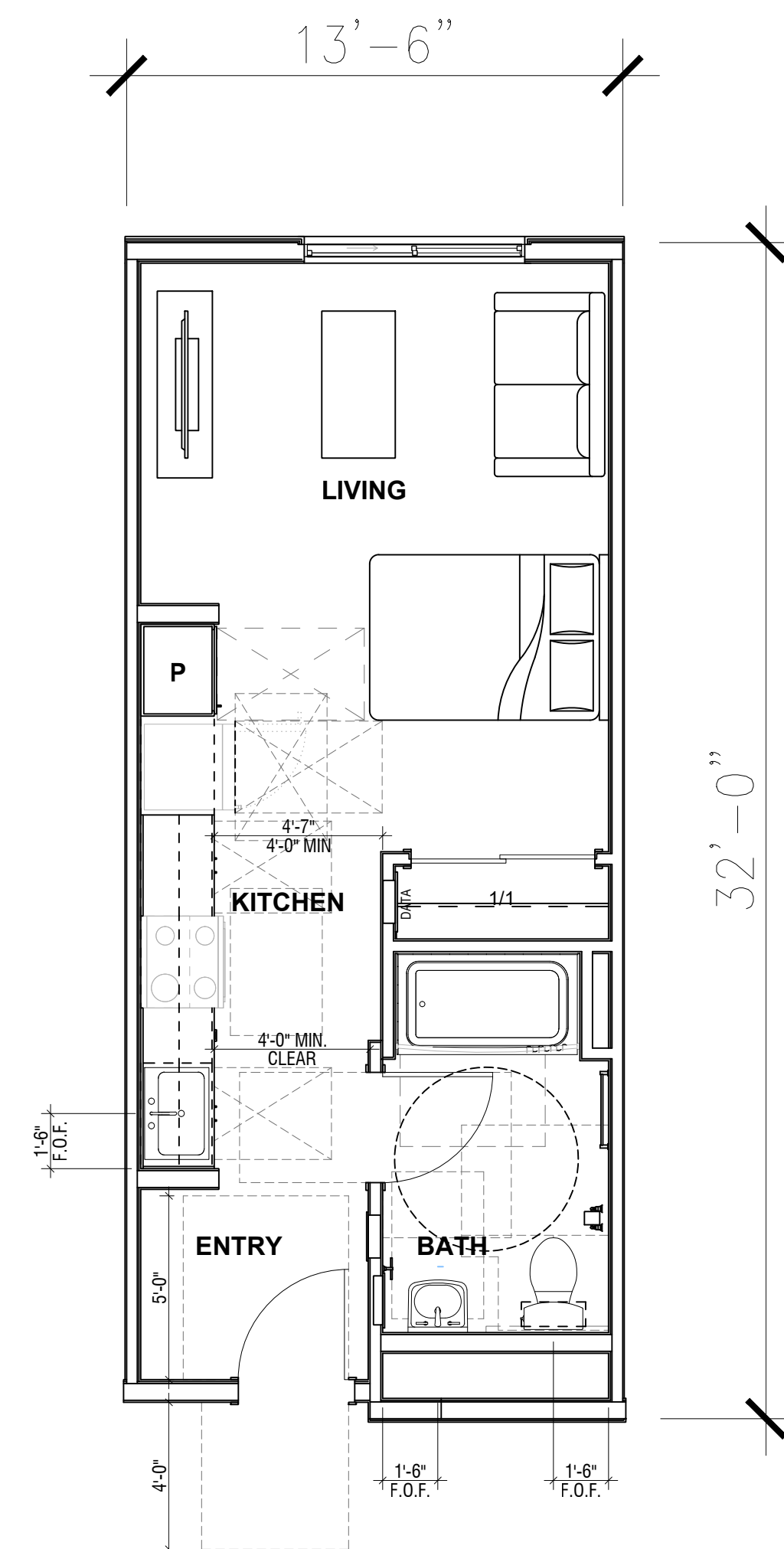
**AO ARCHITECTS**  
 144 NORTH ORANGE ST., ORANGE, CA 92866  
 (714) 639-9860



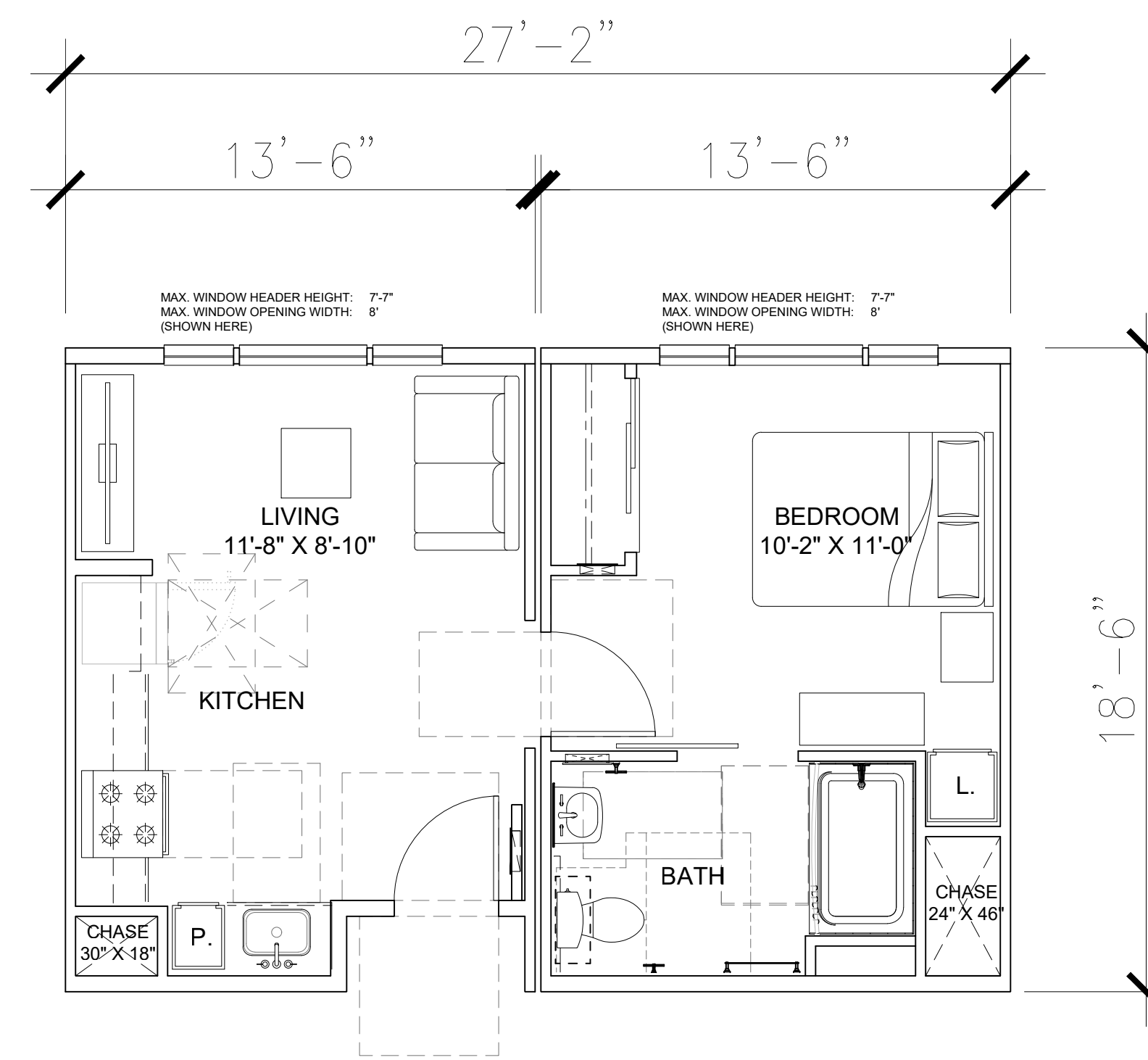


**GENERAL NOTES**

EXACT PLACEMENT AND SIZE OF  
WINDOWS MAY VARY



**UNIT S1**  
AFFORDABLE STUDIO - 1 BATH  
UNIT AREA: 419 SQ.FT.



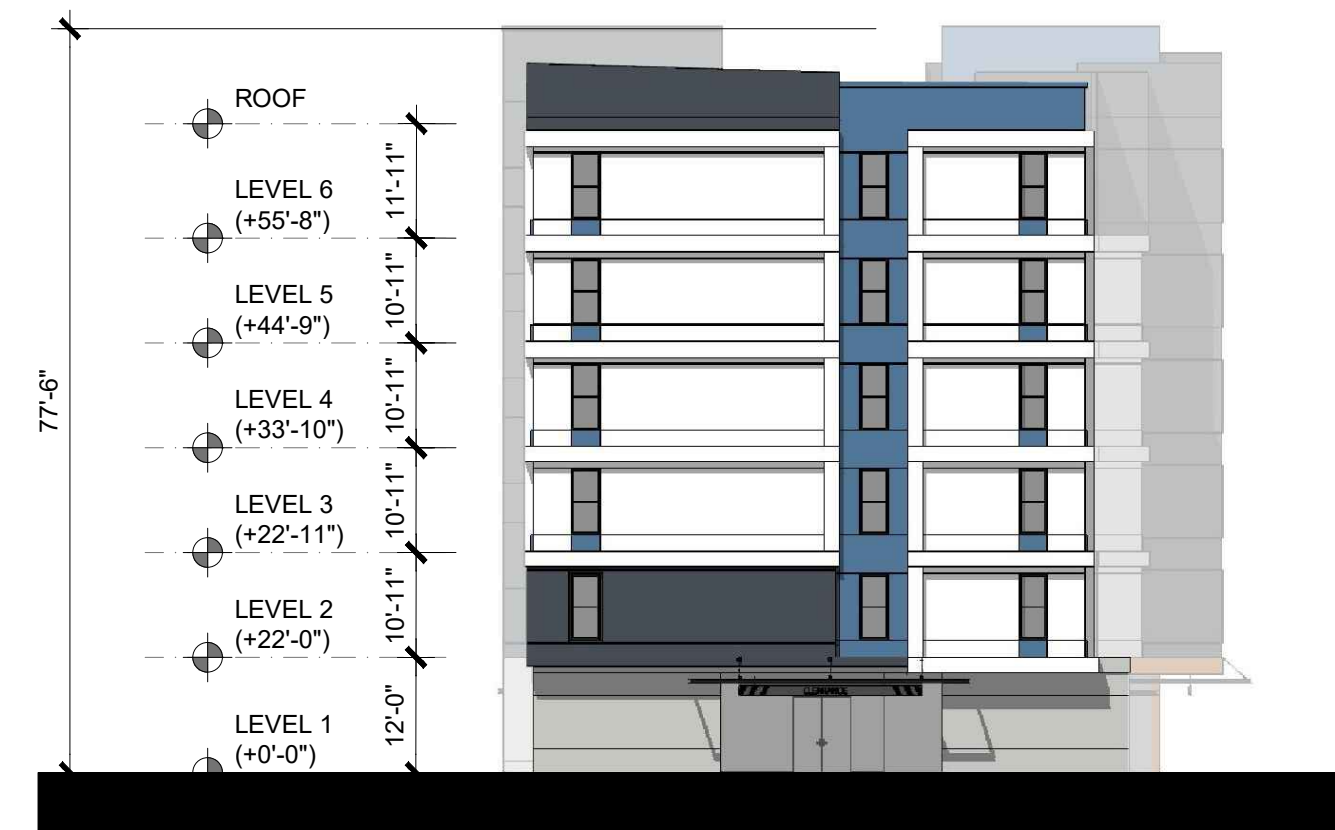
**UNIT A1**  
JR. 1 BED - 1 BATH  
UNIT AREA: 489 SQ.FT.







WEST ELEVATION 4



SOUTH ELEVATION 3

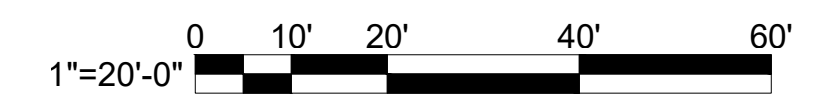
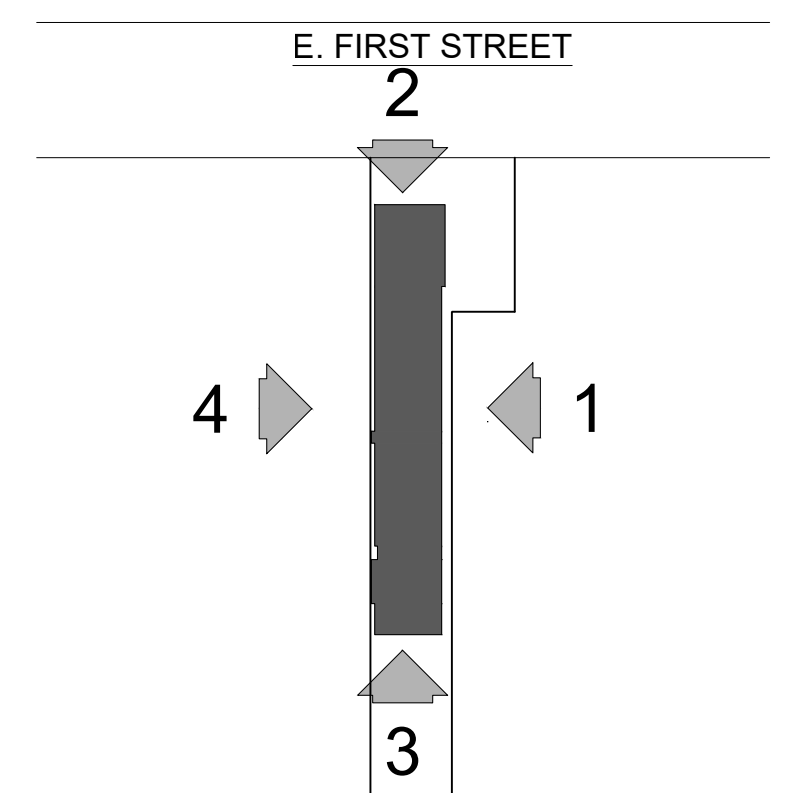


NORTH ELEVATION 2



EAST ELEVATION 1

KEY MAP



CONCEPTUAL BUILDING ELEVATIONS

A4.0

2202 FIRST STREET  
AMG & ASSOCIATES

SANTA ANA, CA

DATE: 12/08/2022  
JOB NO.: 2019-556

AO ARCHITECTS  
144 NORTH ORANGE ST., ORANGE, CA 92866  
(714) 639-9860





VIEW ON FIRST STREET LOOKING SOUTH 4



VIEW ON FIRST STREET LOOKING WEST 2



VIEW ON FIRST STREET LOOKING SOUTH 3



VIEW ON FIRST STREET LOOKING WEST 1

KEY MAP

