

THE FREGOSO GROUP

March 10, 2023

Ms. Fernanda Arias
Santa Ana Planning Division
20 Civic Center Plaza, M-20
Santa Ana, CA. 92702

RE: Submittal of March 6, 2023, Sunshine Meeting documents – Vista Charter Public Schools

Dear Ms. Arias,

On behalf of Vista Charter Public Schools and Red Hook Capital Partners, please find the enclosed materials required by the Sunshine Ordinance for the March 6, 2023 meeting for the Vista Charter Public Schools proposed zone change (amendment application) and amendments to the SD-82 zoning district at 601 N. Fairview Street. The following material are provided for your use:

1. Community meeting notice (English and Spanish)
2. List of property owners within 1000 feet of the site
3. List of occupants within 1000 feet of the site
4. The 1000-foot notification radius map
5. Proof of publication in the local newspaper
6. Meeting agenda
7. Sign-in sheet
8. Copy of the PowerPoint presentation for the meeting
9. Meeting minutes/Questions and answers

This letter confirms, under penalty of perjury, that the required meeting, notifications and materials were prepared and distributed in accordance with the Sunshine Ordinance of the City of Santa Ana.

Respectfully,



Vince Fregoso
The Fregoso Group
On behalf of Vista Charter Public Schools

SUNSHINE ORDINANCE COMMUNITY MEETING NOTICE

You are invited to attend a Community Meeting for the project described below:

Subject: Amend the zoning of the northwest parcel from Industrial to Specific Development No. 82 (SD-82) to be consistent with the majority of the parcel and to amend the Operational Standards of the SD-82 zoning to allow outdoor recreation areas.

Spanish language translators will be available during the meeting.

Location: 2609 West Fifth Street (Vista Heritage Bay 3 Cafeteria)

Meeting Date: Monday, March 6, 2023

Meeting Time: 5:30 pm to 6:30 pm

Meeting Location: Vista Heritage Bay 3 Cafeteria
2609 West Fifth Street

Notification Area: _____

Project Site: _____

Meeting Site: _____



For more information, contact Vince Fregoso at 714-904-4506 or Ingrid Canedo at 818-309-3664

SUNSHINE ORDINANCE

AVISO DE REUNIÓN COMUNITARIA

Está invitado en asistir a una reunión comunitaria al trato del proyecto de desarrollo descrito en adelante:

Propósito: Enmendar la zonificación industrial de la propiedad ubicada en la parte noroeste de la escuela. El emendar la zonificación Nu. 82 (SD-82) para que coincida con la parte mayoría del terreno junto, que viene siendo la escuela. La modificación también agregara términos generales a la zona SD-82 para incluir actividades físicas al aire libre.

Traductores en lenguaje español estarán presentes durante la reunión.

Ubicación: 2609 West Fifth Street (la cafetería de bay 3 de Vista Heritage School)

Fecha de reunión: Lunes, 6 de Marzo de 2023

Hora de reunión: 5:30 p. m. a 6:30 p. m.

Lugar de reunión: La cafetería de bay 3 de Vista Heritage School

2609 West Fifth Street

Notification Area: _____

Project Site: _____

Meeting Site: _____



Para más información, comuníquese con Vince Fregoso al 714-904-4506 o Ingrid Canedo al 818-309-3664



ORDER NO: 2023-26
DATE: 02/09/2023

#3
004-152-10
HOLDINGS SORENTO
2209 W 9TH ST
SANTA ANA CA 92703

#6
004-152-13
ESTHER AVALOS MAFFEY
2225 W 9TH ST
SANTA ANA CA 92703

#9
004-153-02
ESTELA LORA GUERRERO
2230 W 9TH ST
SANTA ANA CA 92703

#12
004-153-05
REBECCA P CAMPOS
2218 W 9TH ST
SANTA ANA CA 92703

#15
004-153-08
LONG TRAN
2206 W 9TH ST
SANTA ANA CA 92703

#18
004-153-11
RODOLFO & STELLA LICERIO
2141 W CIVIC CENTER DR
SANTA ANA CA 92703

#21
004-153-14
IGNACIO D GONZALES
2205 CIVIC CENTER DR WEST
SANTA ANA CA 92703

#24
004-153-18
MASTAN INC
811 N FAIRVIEW ST
SANTA ANA CA 92703

#27
004-183-02
CARLOS H PEREGRINA
2130 W 9TH ST
SANTA ANA CA 92703

#1
004-152-01
ARMANDO & JOSEFINA E ESPARZA
2222 W 10TH ST
SANTA ANA CA 92703

#4
004-152-11
HOLLY NHIHA LE
2217 W 9TH ST
SANTA ANA CA 92703

#7
004-152-14
CANDIDA G OLIVAS
2229 W 9TH ST
SANTA ANA CA 92703

#10
004-153-03
STEVEN HUU & TAMMY CHANH NGUYEN
6945 ALTAIR CT
CORONA CA 92880

#13
004-153-06
TEODULO MONTIEL ADAME
2214 W 9TH ST
SANTA ANA CA 92703

#16
004-153-09
DANIEL PEREZ & JILL E AVILA
2202 W 9TH ST
SANTA ANA CA 92703

#19
004-153-12
NGOC TRAN
2145 W CIVIC CENTER DR
SANTA ANA CA 92703

#22
004-153-16
SOUTHLAND HOMES REAL ESTATE &
INVESTMENT
10448 SALINAS RIVER CIR
FOUNTAIN VALLEY CA 92708

#25
004-153-20
EDELIRA MORENO
2209 W CIVIC CENTER DR
SANTA ANA CA 92703

#28
004-183-03
VICTORIA FLORES RODRIGUEZ
2126 W 9TH ST
SANTA ANA CA 92703

#2
004-152-09
HOLDINGS SORENTO
2209 W 9TH ST
SANTA ANA CA 92703

#5
004-152-12
ERIC R LOPEZ
2221 W 9TH ST
SANTA ANA CA 92703

#8
004-153-01
WINSTON HUYNH
2234 W 9TH ST
SANTA ANA CA 92703

#11
004-153-04
DIOSFORO & MARIA E SERNA
2222 W 9TH ST
SANTA ANA CA 92703

#14
004-153-07
ANTONIO RODRIGUEZ TRUJILLO
2210 W 9TH ST
SANTA ANA CA 92703

#17
004-153-10
RICARDO H & ANA L HARO
2137 CIVIC CENTER DR WEST
SANTA ANA CA 92703

#20
004-153-13
ANDY O MUNOZ
2019 VALENCIA ST
SANTA ANA CA 92706

#23
004-153-17
JUAN D & CAROLYN E MEDRANO
2221 W CIVIC CENTER DR
SANTA ANA CA 92703

#26
004-183-01
SERGIO MORENO JUAREZ
2134 W 9TH ST
SANTA ANA CA 92703

#29
004-183-15
ANDREW JONATHAN & DIANA ROSE MUNOZ
2129 W CIVIC CENTER DR
SANTA ANA CA 92703

#30
004-183-16
DAVID NGUYEN
3361 RURAL CIR
CORONA CA 92882

#31
004-183-17
MICHAEL B MATTINGLEY
4006 CALLE MARLENA
SAN CLEMENTE CA 92672

#32
004-183-22
HERIBERTO & MARIA MERCADO
2121 CIVIC CENTER DR
SANTA ANA CA 92703

#33
004-183-24
REYNALDO & ZOILA VERGARA
2125 CIVIC CTR
SANTA ANA CA 92703

#34
007-021-02
TUAN HOANG NGUYEN
7662 LEHIEN PL
WESTMINSTER CA 92683

#35
007-021-03
ARTURO F DURAZO
2321 6TH ST
SANTA ANA CA 92703

#36
007-021-04
NESTOR ALEJANDRES
2317 6TH ST
SANTA ANA CA 92703

#37
007-021-05
GEORGE B COBARRUVIA
2309 6TH ST
SANTA ANA CA 92703

#38
007-021-06
EUGENE JONES
12921 ROSALIND DR
SANTA ANA CA 92705

#39
007-021-08
JOSE & YOLANDA ZAVALA
2339 6TH ST
SANTA ANA CA 92703

#40
007-021-10
TUNG DINH PHAN
14822 ALCESTER ST
WESTMINSTER CA 92683

#41
007-021-14
JPACIFIC INTERNATIONAL TR6TH SA GARDENS
13043 BACH WAY
CERRITOS CA 90703

#42
007-022-01
FOR THE SOUL LLC HOMES
1616 FLOWER AVE
FULLERTON CA 92833

#43
007-022-04
MICHAEL A MADZOEFF
211 MARIGOLD AVE
CORONA DEL MAR CA 92625

#44
007-022-05
MICHAEL A MADZOEFF
211 MARIGOLD AVE
CORONA DEL MAR CA 92625

#45
007-022-06
MICHAEL A MADZOEFF
211 MARIGOLD AVE
CORONA DEL MAR CA 92625

#46
007-022-07
MICHAEL A MADZOEFF
211 MARIGOLD AVE
CORONA DEL MAR CA 92625

#47
007-022-09
JAKE J YOON
2301 5TH ST
SANTA ANA CA 92703

#48
007-022-13
INDELISA QUINTERO
2424 6TH ST
SANTA ANA CA 92703

#49
007-022-16
MICHAEL A MADZOEFF
211 MARIGOLD AVE
CORONA DEL MAR CA 92625

#50
007-022-17
MICHAEL A MADZOEFF
211 MARIGOLD AVE
CORONA DEL MAR CA 92625

#51
007-022-19
JAKE J YOON
2301 5TH ST
SANTA ANA CA 92703

#52
007-022-20
FRANCISCO JAVIER PERAZA
2414 6TH ST
SANTA ANA CA 92703

#53
007-022-21
LA RIVA ROSIE V DE
2418 6TH ST
SANTA ANA CA 92703

#54
007-022-23
AVA ENTERPRISES
2831 1ST ST
SANTA ANA CA 92703

#55
007-022-24
MICHAEL A MADZOEFF
211 MARIGOLD AVE
CORONA DEL MAR CA 92625

#56
007-022-25
MICHAEL A MADZOEFF
211 MARIGOLD AVE
CORONA DEL MAR CA 92625

#57
007-022-26
ORANGE COUNTY TRANSIT
PO BOX 14184
ORANGE CA 92863

#58
007-022-29
RICK D KAGASOFF
2023 HELIOTROPE
SANTA ANA CA 92706

#59
007-022-30
JAKE J YOON
2301 5TH ST
SANTA ANA CA 92703

#60
007-022-31
MICHAEL A MAD ZOEFF
211 MARIGOLD AVE
CORONA DEL MAR CA 92625

#61
007-022-32
JAKE J YOON
2301 5TH ST
SANTA ANA CA 92703

#62
007-022-33
MICHAEL A MAD ZOEFF
211 MARIGOLD AVE
CORONA DEL MAR CA 92625

#63
007-110-01
KEVIN OVERGAAUW
2308 5TH ST
SANTA ANA CA 92703

#64
007-120-24
RICK D KAGASOFF
2023 HELIOTROPE
SANTA ANA CA 92706

#65
007-120-25
T R KIRWAN
5133 LORELEI AVE
LAKEWOOD CA 90712

#66
007-120-26
JOSE LUIS CHOCOTECO
1002 ROSITA ST
SANTA ANA CA 92703

#67
007-120-27
CHARLES A HATFIELD
25852 PECOS RD
LAGUNA HILLS CA 92653

#68
007-120-28
CHUNG-YEN & YEN-LING HUANG
18819 MT SCHELIN CIR
FOUNTAIN VALLEY CA 92708

#69
007-120-43
KELLY E CHAPMAN
24242 SANTA CLARA AVE 11
DANA POINT CA 92629

#70
007-120-44
KELLY E CHAPMAN
24242 SANTA CLARA AVE 11
DANA POINT CA 92629

#71
007-120-46
DION C CHAPMAN
30442 BENECIA
LAGUNA NIGUEL CA 92677

#72
007-120-48
ORANGE COUNTY TRANSIT
P O BOX 3005
GARDEN GROVE CA 92840

#73
007-121-01
RICK D KAGASOFF
2023 HELIOTROPE
SANTA ANA CA 92705

#74
007-121-02
FIFTH STREET CAPITAL WEST
55 FANLIGHT
IRVINE CA 92620

#75
007-121-03
MARANATHA REAL ESTATE
411 SULLIVAN ST
SANTA ANA CA 92703

#76
007-121-04
HOLDINGS LLC HBBF
410 NANTUCKET PL
SANTA ANA CA 92703

#77
007-121-05
RICK D KAGASOFF
2023 HELIOTROPE DR
SANTA ANA CA 92706

#78
007-121-06
RICK D KAGASOFF
2023 HELIOTROPE
SANTA ANA CA 92705

#79
007-121-07
CYMC LLC
321 SULLIVAN ST
SANTA ANA CA

#80
007-121-08
CYMC LLC
301 SULLIVAN ST
SANTA ANA CA 92703

#81
007-121-09
CYMC LLC
2430 CAPE COD WAY
SANTA ANA CA 92703

#82
007-121-10
RICK D KAGASOFF
2023 HELIOTROPE DR
SANTA ANA CA 92706

#83
007-141-04
CHRIS R SOLDAN
7243 CAMBRIA CIR
ORANGE CA 92869

#84
007-141-11
SPACE PROPERTIES TWO LLC EXTRA
2795 COTTONWOOD PKWY #400
SALT LAKE CITY UT 84121

#85
007-141-24
PHUC VIET TRAN
126 MAXINE ST
SANTA ANA CA 92703

#86
007-141-26
RICK D KAGASOFF
2023 HELIOTROPE
SANTA ANA CA 92706

#87
007-141-29
W & M PROPERTIES
1479 MUSTANG AVE
ORANGE CA 92869

#88
007-141-31
W & M PROPERTIES
1479 MUSTANG AVE
ORANGE CA 92869

#89
007-141-35
F C B PROPERTIES
6138 JAMES ALAN ST
CYPRESS CA 90630

#90
007-141-42
CHRIS R SOLDAN
7243 CAMBRIA CIR
ORANGE CA 92869

#91
007-141-66
MAS LLC YIA
16741 GLENHAVEN LN
HUNTINGTON BEACH CA 92647

#92
007-141-67
ANA MINI STORAGE SANTA
5901 ENCINA RD C-5
GOLETA CA 93117

#93
007-141-76
CHRIS R SOLDAN
7243 CAMBRIA CIR
ORANGE CA 92869

#94
007-141-77
W & M PROPERTIES
1479 MUSTANG AVE
ORANGE CA 92869

#95
007-142-01
GOODWILL INDUSTRIES OF ORANGE COUNTY
CA
410 FAIRVIEW ST
SANTA ANA CA 92703

#96
007-351-01
MOHAMMAD ARAFEEN QUERASHI
6633 PASEO FIESTA DR
ANAHEIM HILLS CA 92703

#97
007-351-02
MOHAMMAD ARAFEEN QUERASHI
6633 PASEO FIESTA DR
ANAHEIM HILLS CA 92703

#98
007-351-03
MARIA FLORES
2230 CIVIC CENTER DRIVE WEST
SANTA ANA CA 92701

#99
007-351-04
JOHN A MONREAL
2226 CIVIC CENTER DR WEST
SANTA ANA CA 92703

#100
007-351-05
KENNY QUYEN LIEU
2222 CIVIC CENTER DR
SANTA ANA CA 92703

#101
007-351-06
EZEQUIEL SEGURA
2218 CIVIC CENTER DR
SANTA ANA CA 92703

#102
007-351-07
RODRIGO SANTIAGO PACHECO
2214 CIVIC CENTER DR
SANTA ANA CA 92703

#103
007-351-08
REYMUNDO & EVA M DOMINGUEZ
2210 CIVIC CENTER DR WEST
SANTA ANA CA 92703

#104
007-351-09
JOSE PATINO
2206 CIVIC CENTER DR
SANTA ANA CA 92703

#105
007-351-10
NHUT NGOC NGUYEN
801 COURTNEY
FULLERTON CA 92833

#106
007-351-11
RAYMOND M ZAMORA
2148 CIVIC CENTER DR WEST
SANTA ANA CA 92703

#107
007-351-14
NOE & MIREYA VARGAS
2136 CIVIC CENTER DR
SANTA ANA CA 92703

#108
007-351-15
ANDRES FLORES
2132 CIVIC CTR
SANTA ANA CA 92703

#109
007-351-16
VINA PROPERTIES
7241 WESTMINSTER BLVD
WESTMINSTER CA 92683

#110
007-351-19
FAUSTO MACHADO
2116 CIVIC CENTER DR WEST
SANTA ANA CA 92703

#111
007-351-24
VENA & JULIE F SCANLAN
2144 CIVIC CENTER DR
SANTA ANA CA 92703

#112
007-351-26
EPIFANIO GONZALEZ
2140 CIVIC DR
SANTA ANA CA 92703

#113
007-351-28
ALEJANDRO GAVINA
2124 CIVIC CENTER DR
SANTA ANA CA 92703

#114
007-351-30
CONSTANTINO SALINAS RODRIGUEZ
2120 CIVIC CENTER DRIVE WEST
SANTA ANA CA 92703

#115
007-351-32
JOSE D ORTIZ
2112 CIVIC CENTER DR
SANTA ANA CA 92703

#116
007-352-02
CHRISTOPHER A OVIEDO
2105 7TH ST
SANTA ANA CA 92703

#117
007-352-03
ESTEVAN N RAMIREZ
2110 7TH ST
SANTA ANA CA 92703

#118
007-352-04
ROGELIO SILVA
2113 7TH ST
SANTA ANA CA 92703

#119
007-352-05
LUIS MELCHOR PENALOZA
2117 7TH ST
SANTA ANA CA 92703

#120
007-352-06
JARELY MELCHOR
2121 7TH ST
SANTA ANA CA 92703

#121
007-352-07
HUAN NGUYEN
2125 7TH ST
SANTA ANA CA 92703

#122
007-352-08
RAUL LOPEZ
2129 7TH ST
SANTA ANA CA 92703

#123
007-352-09
YANLING SUN
2133 7TH ST
SANTA ANA CA 92703

#124
007-352-10
JAIME MUNOZ
1730 WASHINGTON
SANTA ANA CA 92706

#125
007-352-11
SIMONA M PERALES
2201 7TH ST
SANTA ANA CA 92703

#126
007-352-12
ROMAN ANTHONY REYNA
2205 7TH ST
SANTA ANA CA 92703

#127
007-352-13
JOANNA L PETERSON
2533 HESPERIAN ST
SANTA ANA CA 92706

#128
007-352-14
HECTOR MELENDEZ
2213 7TH ST
SANTA ANA CA 92703

#129
007-352-15
SERGIO GASCA MANRIQUEZ
2217 7TH ST
SANTA ANA CA 92703

#130
007-352-16
MACXIMILLIANO P CEBALLOS
2221 17TH ST
SANTA ANA CA 92703

#131
007-352-17
ELVA MENDEZ
2225 7TH ST
SANTA ANA CA 92703

#132
007-352-18
FERNANDO RODRIGUEZ CHAVEZ
2229 7TH ST
SANTA ANA CA 92703

#133
007-352-19
VICTOR MANUEL PEREZ
2233 7TH ST
SANTA ANA CA 92703

#134
007-352-20
JOSE V VALDEZ
2237 7TH ST
SANTA ANA CA 92703

#135
007-352-23
THACH JADE HOANG
2242 7TH ST
SANTA ANA CA 92703

#136
007-352-24
CHUONG MAI
2238 7TH ST
SANTA ANA CA 92703

#137
007-352-25
JUAN DIAZ
2234 7TH ST
SANTA ANA CA 92703

#138
007-352-26
ROBERT ANTHONY FLORES
2230 7TH ST
SANTA ANA CA 92703

#139
007-352-27
CATHY L BUENDIA
2226 7TH ST
SANTA ANA CA 92703

#140
007-352-28
RACHEL CAMACHO
1242 CEDAR
SANTA ANA CA 92707

#141
007-352-29
CATALINA & JOSE A ANDRADE
2218 7TH ST
SANTA ANA CA 92703

#142
007-352-30
JOHNNY C NGUYEN
2214 7TH ST
SANTA ANA CA 92703

#143
007-352-31
ESTHER C GONZALEZ
2210 7TH ST
SANTA ANA CA 92703

#144
007-352-32
KHIET DO
2206 7TH ST
SANTA ANA CA 92703

#145
007-352-33
MARGARITA CORTES
2202 7TH ST
SANTA ANA CA 92703

#146
007-352-34
LILIANA FAUSTO
2138 7TH ST
SANTA ANA CA 92703

#147
007-352-35
BRAD & WENDY PEIKERT
2130 7TH ST
SANTA ANA CA 92703

#148
007-352-36
BRAD & WENDY PEIKERT
2130 7TH ST
SANTA ANA CA 92703

#149
007-352-37
ENRIQUE PENA
2126 7TH ST
SANTA ANA CA 92703

#150
007-352-38
ISRAEL VERGARA ALVAREZ
2122 7TH ST
SANTA ANA CA 92703

#151
007-352-39
ISRAEL & ELEAZER MONTES VERGARA
2118 7TH ST
SANTA ANA CA 92703

#152
007-352-40
AGUSTIN & MARICELA ANAYA
2114 7TH ST
SANTA ANA CA 92703

#153
007-352-41
ESTEVAN N RAMIREZ
2110 7TH ST
SANTA ANA CA 92703

#154
007-352-42
EDNA L MEJIA
1238 BAKER ST
SANTA ANA CA 92707

#155
007-352-46
MOHAMMAD ARAFEEN QUERASHI
6633 PASEO FIESTA DR
ANAHEIM HILLS CA 92703

#156
198-151-35
KIM EAR KUONG
12636 CASA BONITA PL
VICTORVILLE CA 92392

#157
405-211-01
SCHOOL SANTA ANA UNIFIEDDISTRICT
1405 FRENCH ST
SANTA ANA CA 92701

#158
405-211-02
SCHOOL SANTA ANA UNIFIEDDISTRICT
1405 FRENCH ST
SANTA ANA CA 92701

#159
405-211-03
SCHOOL SANTA ANA UNIFIEDDISTRICT
1601 CHESTNUT AVE
SANTA ANA CA 92701

#160
405-211-04
SCHOOL SANTA ANA UNIFIEDDISTRICT
1405 FRENCH ST
SANTA ANA CA 92701

#161
405-211-07
GERALD L HIGDON
12692 BONITA HEIGHTS DR
SANTA ANA CA 92705

#162
405-211-08
ROSA MENDIVIL
1424 LOWELL ST
SANTA ANA CA 92706

#163
405-211-09
THAI JENNIFER LOAN
9350 BOLSA AVE SPC 58
WESTMINSTER CA 92683

#164
405-211-10
ORVILLE N ROSEBEARY
16461 VENUS DR
WESTMINSTER CA 92683

#165
405-211-11
LUIS B & MARIA D L RODRIGUEZ
2520 9TH ST
SANTA ANA CA 92703

#166
405-211-12
JUAN JUAREZ HERNANDEZ
2528 9TH ST
SANTA ANA CA 92703

#167
405-211-13
FELIX CIBRIAN
2534 9TH ST
SANTA ANA CA 92703

#168
405-211-14
DANH C NGUYEN
2606 9TH ST
SANTA ANA CA 92703

#169
405-211-15
MAIRA & NOEL ISRAEL AYALA
1718 TURQUOISE DR
CORONA CA 92882

#170
405-211-16
IRMA OROZCO
11858 MAYFLOWER CIR
FOUNTAIN VALLEY CA 92708

#171
405-211-17
ALFREDA & PABLO JUAREZ
2618 9TH ST
SANTA ANA CA 92703

#172
405-211-18
NGUYEN VIET CAO
16576 MT TODD ST
FOUNTAIN VALLEY CA 92708

#173
405-211-19
RODOLFO MUNOZ
2624 9TH ST
SANTA ANA CA 92703

#174
405-211-20
BERTRAM F RUDOLPH
P O BOX 2302
CARMEL CA 93921

#175
405-211-22
TAI VAN LAM
11460 VIA PLAYA CORTES WAY
SAN DIEGO CA 92124

#176
405-211-23
SOUTHLAND HOMES REAL
10448 SALINAS RIVER CIR
FOUNTAIN VALLEY CA 92708

#177
405-211-36
SCHOOL SANTA ANA UNIFIEDDISTRICT
1405 FRENCH ST
SANTA ANA CA 92701

#178
405-212-01
MY TRAN DUE LUU
9509 PRICHARD ST
BELLFLOWER CA 90706

#179
405-212-02
GUADALUPE OLEA
933 FAIR WAY
SANTA ANA CA 92703

#180
405-212-09
MARCELINO & EUSTOLIA JUAREZ
924 MARENGO PL
SANTA ANA CA 92703

#181
405-212-10
TENTH DO
422 MAXINE ST
SANTA ANA CA 92704

#182
405-212-11
MANUEL GARCIA RIZO
2607 9TH ST
SANTA ANA CA 92703

#183
405-213-01
DENISE LE
1002 FAIRVIEW ST
SANTA ANA CA 92703

#184
405-213-02
DENISE LE
1002 FAIRVIEW ST
SANTA ANA CA 92703

#185
405-213-04
JORGE G FRUTOS
2517 9TH ST
SANTA ANA CA 92703

#186
405-213-05
CUAUHTEMOC FERNANDEZ
2521 9TH ST
SANTA ANA CA 92703

#187
405-213-06
RAYMOND C C YANG
2628 DEEGAN DR
SANTA ANA CA 92704

#188
405-213-07
DIANA MELINA VALENZUELA PEREZ
927 MARENGO PL
SANTA ANA CA 92703

#189
405-213-14
OF SANTA ANA CITY
20 CIVIC CENTER PLAZA M-30
SANTA ANA CA 92701

#190
405-221-01
SCHOOL SANTA ANA UNIFIEDDIST OF ORANGE
1405 FRENCH ST
SANTA ANA CA 92701

#191
405-221-02
SCHOOL SANTA ANA UNIFIEDDIST OF ORANGE
1405 FRENCH ST
SANTA ANA CA 92701

#192
405-221-03
SCHOOL SANTA ANA UNIFIEDDIST OF ORANGE
1405 FRENCH ST
SANTA ANA CA 92701

#193
405-221-05
ORANGE COUNTY TRANSIT
P O BOX 3005
GARDEN GROVE CA 92840

#194
405-221-07
SCHOOL SANTA ANA UNIFIEDDIST OF ORANGE
1405 FRENCH ST
SANTA ANA CA 92701

#195
405-241-01
PARCEL HOLD

#196
405-241-01
PARCEL HOLD

#197
405-241-02
ORANGE COUNTY TRANSIT
P O BOX 3005
GARDEN GROVE CA 92840

#198
405-241-03
KITCHENS QOZB FAIRVIEW
402 OCEAN VIEW AVE
ENCINITAS CA 92024

#199
405-241-04
2609 W 5TH STREET
2900 TEMPLE ST
LOS ANGELES CA 90026

#200
939-45-057
CALVARIO TEMPLO
2501 5TH ST
SANTA ANA CA 92703

#201
939-45-057
CALVARIO TEMPLO
2501 5TH ST
SANTA ANA CA 92703

#202
939-45-058
CALVARIO TEMPLO
2501 5TH ST
SANTA ANA CA 92703

#203
939-45-058
CALVARIO TEMPLO
2501 5TH ST
SANTA ANA CA 92703

#204
939-45-059
CALVARIO TEMPLO
2501 5TH ST
SANTA ANA CA 92703

#205
939-45-059
CALVARIO TEMPLO
2501 5TH ST
SANTA ANA CA 92703

#206
939-45-060
2609 W 5TH STREET
2900 TEMPLE ST
LOS ANGELES CA 90026

#207
939-45-060
2609 W 5TH STREET
2900 TEMPLE ST
LOS ANGELES CA 90026

#208
939-45-061
2609 W 5TH STREET
2900 TEMPLE ST
LOS ANGELES CA 90026

#209
939-45-061
2609 W 5TH STREET
2900 TEMPLE ST
LOS ANGELES CA 90026

#210
939-45-062
2609 W 5TH STREET
2900 TEMPLE ST
LOS ANGELES CA 90026

#211
939-45-062
2609 W 5TH STREET
2900 TEMPLE ST
LOS ANGELES CA 90026

#212
939-45-063
GENERATION TILE & MARBLE NEW
563 FAIRVIEW ST
SANTA ANA CA 92703

#213
939-45-063
GENERATION TILE & MARBLE NEW
563 FAIRVIEW ST
SANTA ANA CA 92703

#214
939-45-064
WILBERT MARRUFO
559 FAIRVIEW ST
SANTA ANA CA 92703

#215
939-45-064
WILBERT MARRUFO
559 FAIRVIEW ST
SANTA ANA CA 92703

#216
939-45-065
WILBERT MARRUFO
555 FAIRVIEW ST
SANTA ANA CA 92703

#217
939-45-065
WILBERT MARRUFO
555 FAIRVIEW ST
SANTA ANA CA 92703

#218
939-45-066
DHANANJAYA N MHASKAR
3972 BARRANCA PKWY J158
IRVINE CA 92606

#219
939-45-066
DHANANJAYA N MHASKAR
3972 BARRANCA PKWY J158
IRVINE CA 92606

#220
939-45-067
SCOTTY LEE
13791 DIEPPE CIR
GARDEN GROVE CA 92843

#221
939-45-067
SCOTTY LEE
13791 DIEPPE CIR
GARDEN GROVE CA 92843

#222
939-45-068
CURTIS & BETTY TOM
24982 LUNA BONITA DR
LAGUNA HILLS CA 92653

#223
939-45-068
CURTIS & BETTY TOM
24982 LUNA BONITA DR
LAGUNA HILLS CA 92653

#224
939-45-069
EN HONG & JANG LAN SHEN
3314 MEADOWRIDGE
ORANGE CA 92867

#225
939-45-069
EN HONG & JANG LAN SHEN
3314 MEADOWRIDGE
ORANGE CA 92867

#226
939-45-070
EDWARD DONLEY
19432 CLOVER
SANTA ANA CA 92705

#227
939-45-070
EDWARD DONLEY
19432 CLOVER
SANTA ANA CA 92705

#228
939-45-071
BARRY J EINCK
14681 DANBERRY CIR
TUSTIN CA 92780

#229
939-45-071
BARRY J EINCK
14681 DANBERRY CIR
TUSTIN CA 92780

#230
939-45-072
ROBERT C HUNT
28371 MODJESKA CANYON RD
MODJESKA CA 92676

#231
939-45-072
ROBERT C HUNT
28371 MODJESKA CANYON RD
MODJESKA CA 92676

#232
939-45-073
TAI TAN PHAM
302 TULIP TREE AVE
ORANGE CA 92865

#233
939-45-073
TAI TAN PHAM
302 TULIP TREE AVE
ORANGE CA 92865

#234
939-45-074
HANH BICH HOANG
16572 GRAHAM PL
HUNTINGTON BEACH CA 92649

#235
939-45-074
HANH BICH HOANG
16572 GRAHAM PL
HUNTINGTON BEACH CA 92649

#1
004-152-01
CURRENT OCCUPANT
2222 W 10TH ST
SANTA ANA CA 92703

#2
004-152-09
CURRENT OCCUPANT
2209 W 9TH ST
SANTA ANA CA 92703

#3
004-152-10
CURRENT OCCUPANT
2213 W 9TH ST
SANTA ANA CA 92703

#4
004-152-11
CURRENT OCCUPANT
2217 W 9TH ST
SANTA ANA CA 92703

#5
004-152-12
CURRENT OCCUPANT
2221 W 9TH ST
SANTA ANA CA 92703

#6
004-152-13
CURRENT OCCUPANT
2225 W 9TH ST
SANTA ANA CA 92703

#7
004-152-14
CURRENT OCCUPANT
2229 W 9TH ST
SANTA ANA CA 92703

#8
004-153-01
CURRENT OCCUPANT
2234 W 9TH ST
SANTA ANA CA 92703

#9
004-153-02
CURRENT OCCUPANT
2230 W 9TH ST
SANTA ANA CA 92703

#10
004-153-03
CURRENT OCCUPANT
2226 W 9TH ST
SANTA ANA CA 92703

#11
004-153-04
CURRENT OCCUPANT
2222 W 9TH ST
SANTA ANA CA 92703

#12
004-153-05
CURRENT OCCUPANT
2218 W 9TH ST
SANTA ANA CA 92703

#13
004-153-06
CURRENT OCCUPANT
2214 W 9TH ST
SANTA ANA CA 92703

#14
004-153-07
CURRENT OCCUPANT
2210 W 9TH ST
SANTA ANA CA 92703

#15
004-153-08
CURRENT OCCUPANT
2206 W 9TH ST
SANTA ANA CA 92703

#16
004-153-09
CURRENT OCCUPANT
2202 W 9TH ST
SANTA ANA CA 92703

#17
004-153-10
CURRENT OCCUPANT
2137 W CIVIC CENTER DR
SANTA ANA CA 92703

#18
004-153-11
CURRENT OCCUPANT
2141 W CIVIC CENTER DR
SANTA ANA CA 92703

#19
004-153-12
CURRENT OCCUPANT
2145 W CIVIC CENTER DR
SANTA ANA CA 92703

#20
004-153-13
CURRENT OCCUPANT
2201 W CIVIC CENTER DR
SANTA ANA CA 92703

#21
004-153-14
CURRENT OCCUPANT
2205 W CIVIC CENTER DR
SANTA ANA CA 92703

#22
004-153-16
CURRENT OCCUPANT
2217 W CIVIC CENTER DR
SANTA ANA CA 92703

#23
004-153-17
CURRENT OCCUPANT
2221 W CIVIC CENTER DR
SANTA ANA CA 92703

#24
004-153-18
CURRENT OCCUPANT
809 N FAIRVIEW ST
SANTA ANA CA 92703

#24
004-153-18
CURRENT OCCUPANT
811 N FAIRVIEW ST
SANTA ANA CA 92703

#24
004-153-18
CURRENT OCCUPANT
813 N FAIRVIEW ST
SANTA ANA CA 92703

#24
004-153-18
CURRENT OCCUPANT
815 N FAIRVIEW ST
SANTA ANA CA 92703

#25
004-153-20
CURRENT OCCUPANT
2209 W CIVIC CENTER DR
SANTA ANA CA 92703

#26
004-183-01
CURRENT OCCUPANT
2134 W 9TH ST
SANTA ANA CA 92703

#27
004-183-02
CURRENT OCCUPANT
2130 W 9TH ST
SANTA ANA CA 92703

#28
004-183-03
CURRENT OCCUPANT
2126 W 9TH ST
SANTA ANA CA 92703

#29
004-183-15
CURRENT OCCUPANT
2129 W CIVIC CENTER DR
SANTA ANA CA 92703

#30
004-183-16
CURRENT OCCUPANT
2133 W CIVIC CENTER DR
SANTA ANA CA 92703

#31
004-183-17
CURRENT OCCUPANT
2119 W CIVIC CENTER DR
SANTA ANA CA 92703

#32
004-183-22
CURRENT OCCUPANT
2121 W CIVIC CENTER DR
SANTA ANA CA 92703

#33
004-183-24
CURRENT OCCUPANT
2125 W CIVIC CENTER DR
SANTA ANA CA 92703

#34
007-021-02
CURRENT OCCUPANT
2325 W 6TH ST
SANTA ANA CA 92703

#35
007-021-03
CURRENT OCCUPANT
2321 W 6TH ST
SANTA ANA CA 92703

#36
007-021-04
CURRENT OCCUPANT
2317 W 6TH ST
SANTA ANA CA 92703

#37
007-021-05
CURRENT OCCUPANT
2309 W 6TH ST
SANTA ANA CA 92703

#38
007-021-06
CURRENT OCCUPANT
2307 W 6TH ST
SANTA ANA CA 92703

#39
007-021-08
CURRENT OCCUPANT
2339 W 6TH ST
SANTA ANA CA 92703

#40
007-021-10
CURRENT OCCUPANT
2331 W 6TH ST
SANTA ANA CA 92703

#41
007-021-14
CURRENT OCCUPANT
2333 W 6TH ST
SANTA ANA CA 92703

#42
007-022-01
CURRENT OCCUPANT
2430 W 6TH ST
SANTA ANA CA 92703

#43
007-022-04
CURRENT OCCUPANT
2334 W 6TH ST
SANTA ANA CA 92703

#44
007-022-05
CURRENT OCCUPANT
2328 W 6TH ST
SANTA ANA CA 92703

#45
007-022-06
CURRENT OCCUPANT
2324 W 6TH ST
SANTA ANA CA 92703

#46
007-022-07
CURRENT OCCUPANT
2318 W 6TH ST
SANTA ANA CA 92703

#47
007-022-09
CURRENT OCCUPANT
2304 W 6TH ST
SANTA ANA CA 92703

#48
007-022-13
CURRENT OCCUPANT
2424 W 6TH ST
SANTA ANA CA 92703

#49
007-022-16
CURRENT OCCUPANT
2325 W 5TH ST
SANTA ANA CA 92703

#50
007-022-17
CURRENT OCCUPANT
2317 W 5TH ST
SANTA ANA CA 92703

#51
007-022-19
CURRENT OCCUPANT
2310 W 6TH ST
SANTA ANA CA 92703

#52
007-022-20
CURRENT OCCUPANT
2414 W 6TH ST
SANTA ANA CA 92703

#53
007-022-21
CURRENT OCCUPANT
2418 W 6TH ST
SANTA ANA CA 92703

#54
007-022-23
CURRENT OCCUPANT
2338 W 6TH ST
SANTA ANA CA 92703

#55
007-022-24
NO CURRENT OCCUPANT

#56
007-022-25
CURRENT OCCUPANT
2329 W 5TH ST
SANTA ANA CA 92703

#57
007-022-26
NO CURRENT OCCUPANT

#58
007-022-29
CURRENT OCCUPANT
2415 W 5TH ST
SANTA ANA CA 92703

#59
007-022-30
CURRENT OCCUPANT
2301 W 5TH ST
SANTA ANA CA 92703

#60
007-022-31
CURRENT OCCUPANT
2314 W 6TH ST
SANTA ANA CA 92703

#61
007-022-32
CURRENT OCCUPANT
2301 W 5TH ST
SANTA ANA CA 92703

#62
007-022-33
CURRENT OCCUPANT
2315 W 5TH ST
SANTA ANA CA 92703

#63
007-110-01
CURRENT OCCUPANT
2308 W 5TH ST
SANTA ANA CA 92703

#64
007-120-24
CURRENT OCCUPANT
2400 W 5TH ST
SANTA ANA CA 92703

#65
007-120-25
CURRENT OCCUPANT
2401 CAPE COD WAY A12
SANTA ANA CA 92703

#66
007-120-26
CURRENT OCCUPANT
2350 W 5TH ST
SANTA ANA CA 92703

#67
007-120-27
CURRENT OCCUPANT
2351 CAPE COD WAY
SANTA ANA CA 92703

#68
007-120-28
CURRENT OCCUPANT
2330 W 5TH ST
SANTA ANA CA 92703

#69
007-120-43
CURRENT OCCUPANT
2341 CAPE COD WAY
SANTA ANA CA 92703

#70
007-120-44
CURRENT OCCUPANT
2331 CAPE COD WAY
SANTA ANA CA 92703

#71
007-120-46
CURRENT OCCUPANT
2321 CAPE COD WAY
SANTA ANA CA 92703

#72
007-120-48
NO CURRENT OCCUPANT

#73
007-121-01
CURRENT OCCUPANT
2430 W 5TH ST
SANTA ANA CA 92703

#74
007-121-02
CURRENT OCCUPANT
2410 W 5TH ST
SANTA ANA CA 92703

#75
007-121-03
CURRENT OCCUPANT
411 N SULLIVAN ST
SANTA ANA CA 92703

#76
007-121-04
CURRENT OCCUPANT
410 NANTUCKET PL
SANTA ANA CA 92703

#77
007-121-05
CURRENT OCCUPANT
401 N SULLIVAN ST
SANTA ANA CA 92703

#78
007-121-06
CURRENT OCCUPANT
400 NANTUCKET PL
SANTA ANA CA 92703

#79
007-121-07
CURRENT OCCUPANT
321 N SULLIVAN ST
SANTA ANA CA 92703

#80
007-121-08
CURRENT OCCUPANT
301 N SULLIVAN ST
SANTA ANA CA 92703

#81
007-121-09
CURRENT OCCUPANT
2430 CAPE COD WAY
SANTA ANA CA 92703

#82
007-121-10
CURRENT OCCUPANT
2420 CAPE COD WAY
SANTA ANA CA 92703

#83
007-141-04
CURRENT OCCUPANT
302 N SULLIVAN ST
SANTA ANA CA 92703

#84
007-141-11
CURRENT OCCUPANT
2602 W 5TH ST
SANTA ANA CA 92703

#85
007-141-24
CURRENT OCCUPANT
2520 W 5TH ST
SANTA ANA CA 92703

#86
007-141-26
CURRENT OCCUPANT
2518 W 5TH ST
SANTA ANA CA 92703

#87
007-141-29
CURRENT OCCUPANT
408 N SULLIVAN ST
SANTA ANA CA 92703

#88
007-141-31
CURRENT OCCUPANT
406 N SULLIVAN ST
SANTA ANA CA 92703

#89
007-141-35
CURRENT OCCUPANT
412 N SULLIVAN ST
SANTA ANA CA 92703

#90
007-141-42
CURRENT OCCUPANT
402 N SULLIVAN ST
SANTA ANA CA 92703

#91
007-141-66
CURRENT OCCUPANT
419 N FAIRVIEW ST
SANTA ANA CA 92703

#92
007-141-67
CURRENT OCCUPANT
401 N FAIRVIEW ST
SANTA ANA CA 92703

#93
007-141-76
CURRENT OCCUPANT
308 N SULLIVAN ST
SANTA ANA CA 92703

#94
007-141-77
CURRENT OCCUPANT
404 N SULLIVAN ST
SANTA ANA CA 92703

#95
007-142-01
CURRENT OCCUPANT
404 N FAIRVIEW ST
SANTA ANA CA 92703

#96
007-351-01
CURRENT OCCUPANT
711 N FAIRVIEW ST
SANTA ANA CA 92703

#97
007-351-02
CURRENT OCCUPANT
711 N FAIRVIEW ST
SANTA ANA CA 92703

#98
007-351-03
CURRENT OCCUPANT
2230 W CIVIC CENTER DR
SANTA ANA CA 92703

#99
007-351-04
CURRENT OCCUPANT
2226 W CIVIC CENTER DR
SANTA ANA CA 92703

#100
007-351-05
CURRENT OCCUPANT
2222 W CIVIC CENTER DR
SANTA ANA CA 92703

#101
007-351-06
CURRENT OCCUPANT
2218 W CIVIC CENTER DR
SANTA ANA CA 92703

#102
007-351-07
CURRENT OCCUPANT
2214 W CIVIC CENTER DR
SANTA ANA CA 92703

#103
007-351-08
CURRENT OCCUPANT
2210 W CIVIC CENTER DR
SANTA ANA CA 92703

#104
007-351-09
CURRENT OCCUPANT
2206 W CIVIC CENTER DR
SANTA ANA CA 92703

#105
007-351-10
CURRENT OCCUPANT
2202 W CIVIC CENTER DR
SANTA ANA CA 92703

#106
007-351-11
CURRENT OCCUPANT
2148 W CIVIC CENTER DR
SANTA ANA CA 92703

#107
007-351-14
CURRENT OCCUPANT
2136 W CIVIC CENTER DR
SANTA ANA CA 92703

#108
007-351-15
CURRENT OCCUPANT
2132 W CIVIC CENTER DR
SANTA ANA CA 92703

#109
007-351-16
CURRENT OCCUPANT
2128 W CIVIC CENTER DR
SANTA ANA CA 92703

#110
007-351-19
CURRENT OCCUPANT
2116 W CIVIC CENTER DR
SANTA ANA CA 92703

#111
007-351-24
CURRENT OCCUPANT
2144 W CIVIC CENTER DR
SANTA ANA CA 92703

#112
007-351-26
CURRENT OCCUPANT
2140 W CIVIC CENTER DR
SANTA ANA CA 92703

#113
007-351-28
CURRENT OCCUPANT
2124 W CIVIC CENTER DR
SANTA ANA CA 92703

#114
007-351-30
CURRENT OCCUPANT
2120 W CIVIC CENTER DR
SANTA ANA CA 92703

#115
007-351-32
CURRENT OCCUPANT
2112 W CIVIC CENTER DR
SANTA ANA CA 92703

#116
007-352-02
CURRENT OCCUPANT
2105 W 7TH ST
SANTA ANA CA 92703

#117
007-352-03
CURRENT OCCUPANT
2109 W 7TH ST
SANTA ANA CA 92703

#118
007-352-04
CURRENT OCCUPANT
2113 W 7TH ST
SANTA ANA CA 92703

#119
007-352-05
CURRENT OCCUPANT
2117 W 7TH ST
SANTA ANA CA 92703

#120
007-352-06
CURRENT OCCUPANT
2121 W 7TH ST
SANTA ANA CA 92703

#121
007-352-07
CURRENT OCCUPANT
2125 W 7TH ST
SANTA ANA CA 92703

#122
007-352-08
CURRENT OCCUPANT
2129 W 7TH ST
SANTA ANA CA 92703

#123
007-352-09
CURRENT OCCUPANT
2133 W 7TH ST
SANTA ANA CA 92703

#124
007-352-10
CURRENT OCCUPANT
2137 W 7TH ST
SANTA ANA CA 92703

#125
007-352-11
CURRENT OCCUPANT
2201 W 7TH ST
SANTA ANA CA 92703

#126
007-352-12
CURRENT OCCUPANT
2205 W 7TH ST
SANTA ANA CA 92703

#127
007-352-13
CURRENT OCCUPANT
2209 W 7TH ST
SANTA ANA CA 92703

#128
007-352-14
CURRENT OCCUPANT
2213 W 7TH ST
SANTA ANA CA 92703

#129
007-352-15
CURRENT OCCUPANT
2217 W 7TH ST
SANTA ANA CA 92703

#130
007-352-16
CURRENT OCCUPANT
2221 W 7TH ST
SANTA ANA CA 92703

#131
007-352-17
CURRENT OCCUPANT
2225 W 7TH ST
SANTA ANA CA 92703

#132
007-352-18
CURRENT OCCUPANT
2229 W 7TH ST
SANTA ANA CA 92703

#133
007-352-19
CURRENT OCCUPANT
2233 W 7TH ST
SANTA ANA CA 92703

#134
007-352-20
CURRENT OCCUPANT
2237 W 7TH ST
SANTA ANA CA 92703

#135
007-352-23
CURRENT OCCUPANT
2242 W 7TH ST
SANTA ANA CA 92703

#136
007-352-24
CURRENT OCCUPANT
2238 W 7TH ST
SANTA ANA CA 92703

#137
007-352-25
CURRENT OCCUPANT
2234 W 7TH ST
SANTA ANA CA 92703

#138
007-352-26
CURRENT OCCUPANT
2230 W 7TH ST
SANTA ANA CA 92703

#139
007-352-27
CURRENT OCCUPANT
2226 W 7TH ST
SANTA ANA CA 92703

#140
007-352-28
CURRENT OCCUPANT
2222 W 7TH ST
SANTA ANA CA 92703

#141
007-352-29
CURRENT OCCUPANT
2218 W 7TH ST
SANTA ANA CA 92703

#142
007-352-30
CURRENT OCCUPANT
2214 W 7TH ST
SANTA ANA CA 92703

#143
007-352-31
CURRENT OCCUPANT
2210 W 7TH ST
SANTA ANA CA 92703

#144
007-352-32
CURRENT OCCUPANT
2206 W 7TH ST
SANTA ANA CA 92703

#145
007-352-33
CURRENT OCCUPANT
2202 W 7TH ST
SANTA ANA CA 92703

#146
007-352-34
CURRENT OCCUPANT
2138 W 7TH ST
SANTA ANA CA 92703

#147
007-352-35
CURRENT OCCUPANT
2134 W 7TH ST
SANTA ANA CA 92703

#148
007-352-36
CURRENT OCCUPANT
2130 W 7TH ST
SANTA ANA CA 92703

#149
007-352-37
CURRENT OCCUPANT
2126 W 7TH ST
SANTA ANA CA 92703

#150
007-352-38
CURRENT OCCUPANT
2122 W 7TH ST
SANTA ANA CA 92703

#151
007-352-39
CURRENT OCCUPANT
2118 W 7TH ST
SANTA ANA CA 92703

#152
007-352-40
CURRENT OCCUPANT
2114 W 7TH ST
SANTA ANA CA 92703

#153
007-352-41
CURRENT OCCUPANT
2110 W 7TH ST
SANTA ANA CA 92703

#154
007-352-42
CURRENT OCCUPANT
2106 W 7TH ST
SANTA ANA CA 92703

#155
007-352-46
CURRENT OCCUPANT
711 N FAIRVIEW ST
SANTA ANA CA 92703

#156
198-151-35
NO CURRENT OCCUPANT

#157
405-211-01
CURRENT OCCUPANT
730 N FAIRVIEW ST
SANTA ANA CA 92703

#158
405-211-02
CURRENT OCCUPANT
750 N FAIRVIEW ST
SANTA ANA CA 92703

#159
405-211-03
CURRENT OCCUPANT
720 N FAIRVIEW ST
SANTA ANA CA 92703

#160
405-211-04
CURRENT OCCUPANT
804 N FAIRVIEW ST
SANTA ANA CA 92703

#161
405-211-07
CURRENT OCCUPANT
2502 W 9TH ST
SANTA ANA CA 92703

#162
405-211-08
CURRENT OCCUPANT
2506 W 9TH ST
SANTA ANA CA 92703

#163
405-211-09
CURRENT OCCUPANT
2510 W 9TH ST
SANTA ANA CA 92703

#164
405-211-10
NO CURRENT OCCUPANT

#165
405-211-11
CURRENT OCCUPANT
2520 W 9TH ST
SANTA ANA CA 92703

#166
405-211-12
CURRENT OCCUPANT
2526 W 9TH ST
SANTA ANA CA 92703

#167
405-211-13
CURRENT OCCUPANT
2534 W 9TH ST
SANTA ANA CA 92703

#168
405-211-14
CURRENT OCCUPANT
2604 W 9TH ST
SANTA ANA CA 92703

#169
405-211-15
CURRENT OCCUPANT
2608 W 9TH ST
SANTA ANA CA 92703

#170
405-211-16
CURRENT OCCUPANT
2612 W 9TH ST
SANTA ANA CA 92703

#171
405-211-17
CURRENT OCCUPANT
2616 W 9TH ST
SANTA ANA CA 92703

#172
405-211-18
CURRENT OCCUPANT
2620 W 9TH ST
SANTA ANA CA 92703

#173
405-211-19
CURRENT OCCUPANT
2624 W 9TH ST
SANTA ANA CA 92703

#174
405-211-20
NO CURRENT OCCUPANT

#175
405-211-22
CURRENT OCCUPANT
916 FAIR WAY
SANTA ANA CA 92703

#176
405-211-23
CURRENT OCCUPANT
920 FAIR WAY
SANTA ANA CA 92703

#177
405-211-36
NO CURRENT OCCUPANT

#178
405-212-01
CURRENT OCCUPANT
2611 W 9TH ST
SANTA ANA CA 92703

#179
405-212-02
CURRENT OCCUPANT
933 FAIR WAY
SANTA ANA CA 92703

#180
405-212-09
CURRENT OCCUPANT
924 MARENGO PL
SANTA ANA CA 92703

#181
405-212-10
CURRENT OCCUPANT
2535 W 9TH ST
SANTA ANA CA 92703

#182
405-212-11
CURRENT OCCUPANT
2605 W 9TH ST
SANTA ANA CA 92703

#183
405-213-01
CURRENT OCCUPANT
1002 N FAIRVIEW ST
SANTA ANA CA 92703

#184
405-213-02
NO CURRENT OCCUPANT

#185
405-213-04
CURRENT OCCUPANT
2517 W 9TH ST
SANTA ANA CA 92703

#186
405-213-05
CURRENT OCCUPANT
2521 W 9TH ST
SANTA ANA CA 92703

#187
405-213-06
CURRENT OCCUPANT
923 MARENGO PL
SANTA ANA CA 92703

#188
405-213-07
CURRENT OCCUPANT
927 MARENGO PL
SANTA ANA CA 92703

#189
405-213-14
CURRENT OCCUPANT
2507 W 9TH ST
SANTA ANA CA 92703

#190
405-221-01
NO CURRENT OCCUPANT

#191
405-221-02
NO CURRENT OCCUPANT

#192
405-221-03
NO CURRENT OCCUPANT

#193
405-221-05
NO CURRENT OCCUPANT

#194
405-221-07
CURRENT OCCUPANT
2701 W 5TH ST
SANTA ANA CA 92703

#195
405-241-01
NO CURRENT OCCUPANT

#196
405-241-01
NO CURRENT OCCUPANT

#197
405-241-02
NO CURRENT OCCUPANT

#198
405-241-03
CURRENT OCCUPANT
501 N FAIRVIEW ST
SANTA ANA CA 92703

#199
405-241-04
CURRENT OCCUPANT
601 N FAIRVIEW ST
SANTA ANA CA 92703

#199
405-241-04
CURRENT OCCUPANT
651 N FAIRVIEW ST
SANTA ANA CA 92703

#199
405-241-04
CURRENT OCCUPANT
633 N FAIRVIEW ST
SANTA ANA CA 92703

#199
405-241-04
CURRENT OCCUPANT
643 N FAIRVIEW ST
SANTA ANA CA 92703

#199
405-241-04
CURRENT OCCUPANT
615 N FAIRVIEW ST
SANTA ANA CA 92703

#200
939-45-057
CURRENT OCCUPANT
2519 W 5TH ST
SANTA ANA CA 92703

#201
939-45-057
CURRENT OCCUPANT
2519 W 5TH ST
SANTA ANA CA 92703

#202
939-45-058
CURRENT OCCUPANT
2511 W 5TH ST
SANTA ANA CA 92703

#203
939-45-058
CURRENT OCCUPANT
2511 W 5TH ST
SANTA ANA CA 92703

#204
939-45-059
CURRENT OCCUPANT
2501 W 5TH ST
SANTA ANA CA 92703

#205
939-45-059
CURRENT OCCUPANT
2501 W 5TH ST
SANTA ANA CA 92703

#206
939-45-060
CURRENT OCCUPANT
2617 W 5TH ST
SANTA ANA CA 92703

#207
939-45-060
CURRENT OCCUPANT
2617 W 5TH ST
SANTA ANA CA 92703

#208
939-45-061
CURRENT OCCUPANT
2609 W 5TH ST
SANTA ANA CA 92703

#209
939-45-061
CURRENT OCCUPANT
2609 W 5TH ST
SANTA ANA CA 92703

#210
939-45-062
CURRENT OCCUPANT
2601 W 5TH ST
SANTA ANA CA 92703

#211
939-45-062
CURRENT OCCUPANT
2601 W 5TH ST
SANTA ANA CA 92703

#212
939-45-063
CURRENT OCCUPANT
563 N FAIRVIEW ST
SANTA ANA CA 92703

#213
939-45-063
CURRENT OCCUPANT
563 N FAIRVIEW ST
SANTA ANA CA 92703

#214
939-45-064
CURRENT OCCUPANT
559 N FAIRVIEW ST
SANTA ANA CA 92703

#215
939-45-064
CURRENT OCCUPANT
559 N FAIRVIEW ST
SANTA ANA CA 92703

#216
939-45-065
CURRENT OCCUPANT
555 N FAIRVIEW ST
SANTA ANA CA 92703

#217
939-45-065
CURRENT OCCUPANT
555 N FAIRVIEW ST
SANTA ANA CA 92703

#218
939-45-066
CURRENT OCCUPANT
551 N FAIRVIEW ST
SANTA ANA CA 92703

#219
939-45-066
CURRENT OCCUPANT
551 N FAIRVIEW ST
SANTA ANA CA 92703

#220
939-45-067
CURRENT OCCUPANT
547 N FAIRVIEW ST
SANTA ANA CA 92703

#221
939-45-067
CURRENT OCCUPANT
547 N FAIRVIEW ST
SANTA ANA CA 92703

#222
939-45-068
CURRENT OCCUPANT
539 N FAIRVIEW ST
SANTA ANA CA 92703

#223
939-45-068
CURRENT OCCUPANT
539 N FAIRVIEW ST
SANTA ANA CA 92703

#224
939-45-069
CURRENT OCCUPANT
531 N FAIRVIEW ST
SANTA ANA CA 92703

#225
939-45-069
CURRENT OCCUPANT
531 N FAIRVIEW ST
SANTA ANA CA 92703

#226
939-45-070
CURRENT OCCUPANT
527 N FAIRVIEW ST
SANTA ANA CA 92703

#227
939-45-070
CURRENT OCCUPANT
527 N FAIRVIEW ST
SANTA ANA CA 92703

#228
939-45-071
CURRENT OCCUPANT
523 N FAIRVIEW ST
SANTA ANA CA 92703

#229
939-45-071
CURRENT OCCUPANT
523 N FAIRVIEW ST
SANTA ANA CA 92703

#230
939-45-072
CURRENT OCCUPANT
2501 W 5TH ST
SANTA ANA CA 92703

#230
939-45-072
CURRENT OCCUPANT
2519 W 5TH ST
SANTA ANA CA 92703

#231
939-45-072
CURRENT OCCUPANT
519 N FAIRVIEW ST
SANTA ANA CA 92703

#231
939-45-072
CURRENT OCCUPANT
2609 W 5TH ST
SANTA ANA CA 92703

#231
939-45-072
CURRENT OCCUPANT
523 N FAIRVIEW ST
SANTA ANA CA 92703

#231
939-45-072
CURRENT OCCUPANT
547 N FAIRVIEW ST
SANTA ANA CA 92703

#231
939-45-072
CURRENT OCCUPANT
555 N FAIRVIEW ST
SANTA ANA CA 92703

#231
939-45-072
CURRENT OCCUPANT
563 N FAIRVIEW ST
SANTA ANA CA 92703

#232
939-45-073
CURRENT OCCUPANT
515 N FAIRVIEW ST
SANTA ANA CA 92703

#233
939-45-073
CURRENT OCCUPANT
515 N FAIRVIEW ST
SANTA ANA CA 92703

#234
939-45-074
CURRENT OCCUPANT
511 N FAIRVIEW ST
SANTA ANA CA 92703

#235
939-45-074
CURRENT OCCUPANT
511 N FAIRVIEW ST
SANTA ANA CA 92703

RADIUS MAP 1000'

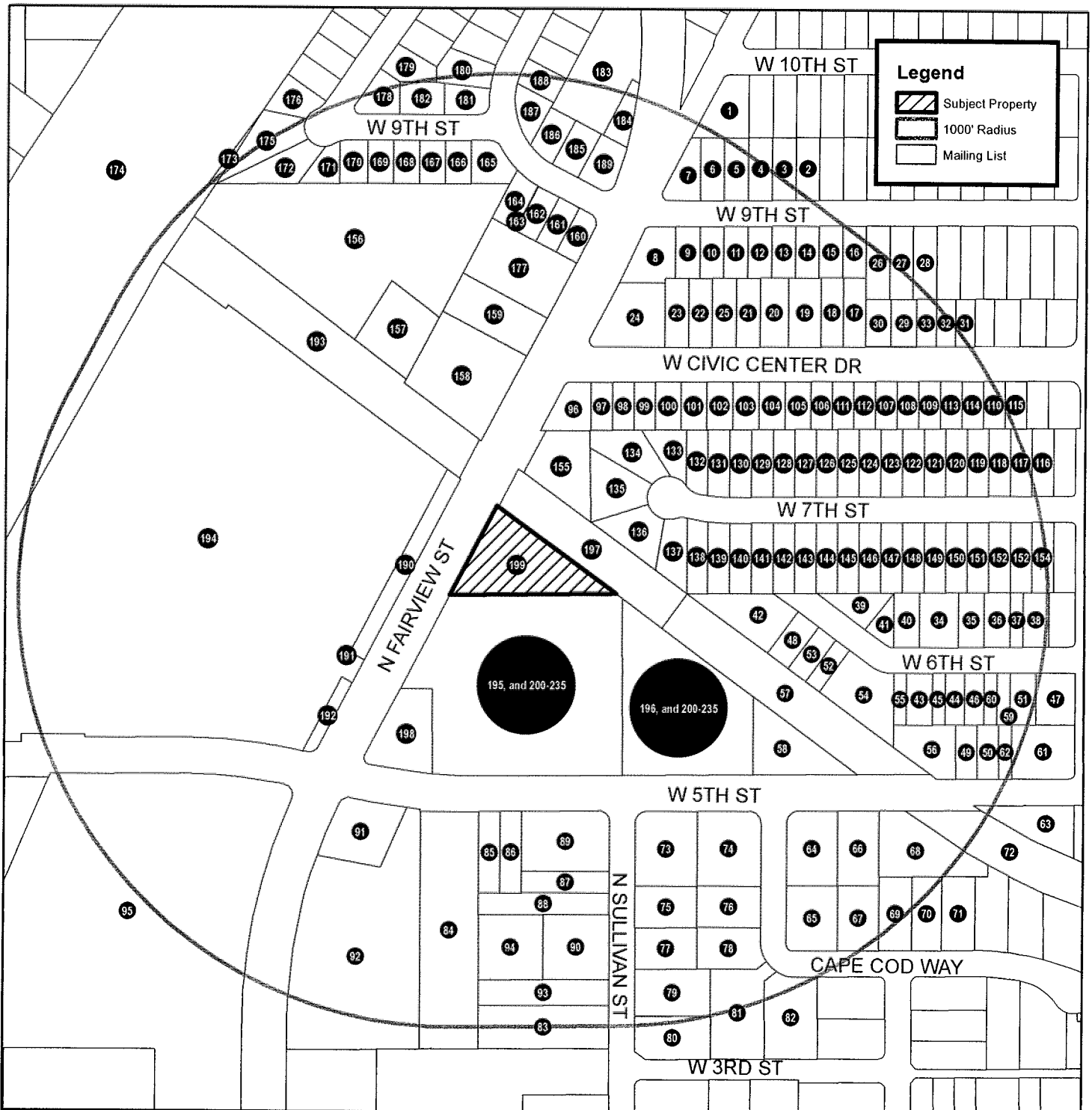
Map Date: 2/9/2023

SUBJECT PROPERTY

ADDRESS: 601 N. FAIRVIEW AVE., SANTA ANA, CA 92703
APN: 405-241-04

Graphic Data Source

Orange County Geographic Information System
Base Parcel Database (Derived from APN Maps)
Coordinate System: NAD 1983 StatePlane California V FIPS 0405 Feet
Datum: North American 1983



Latest equalized assessment rolls obtained from the Orange County Assessor's Office through ParcelQuest, a vendor service on 2/9/2023

ORDER NO. 2023-26



www.radiusmaps4less.com | (909) 997-9357

ORANGE COUNTY REPORTER

~SINCE 1921~

Mailing Address : 600 W SANTA ANA BLVD STE 812, SANTA ANA, CA 92701
Telephone (714) 543-2027 / Fax (714) 542-6841
Visit us @ www.LegalAdstore.com

Ingrid Canedo
VISTA HERITAGE GLOBAL ACADEMY
2609 W. 5TH STREET
SANTA ANA, CA 92703

OR# 3674151

COPY OF NOTICE

Notice Type: GPN GOVT PUBLIC NOTICE

Ad Description

Vista Sunshine Meeting Notice

To the right is a copy of the notice you sent to us for publication in the ORANGE COUNTY REPORTER. Thank you for using our newspaper. Please read this notice carefully and call us with any corrections. The Proof of Publication will be filed with the County Clerk, if required, and mailed to you after the last date below. Publication date(s) for this notice is (are):

02/24/2023

An invoice will be sent after the last date of publication. If you prepaid this order in full, you will not receive an invoice.

Daily Journal Corporation

Serving your legal advertising needs throughout California.

ORANGE COUNTY REPORTER, SANTA ANA	(714) 543-2027
BUSINESS JOURNAL, RIVERSIDE	(951) 784-0111
DAILY COMMERCE, LOS ANGELES	(213) 229-5300
LOS ANGELES DAILY JOURNAL, LOS ANGELES	(213) 229-5300
SAN FRANCISCO DAILY JOURNAL, SAN FRANCISCO	(800) 640-4829
SAN JOSE POST-RECORD, SAN JOSE	(408) 287-4866
THE DAILY RECORDER, SACRAMENTO	(916) 444-2355
THE DAILY TRANSCRIPT, SAN DIEGO	(619) 232-3486
THE INTER-CITY EXPRESS, OAKLAND	(510) 272-4747



* A 0 0 0 0 0 6 2 3 8 8 8 4 *

AGENDA

SUNSHINE ORDINANCE

COMMUNITY MEETING NOTICE

Monday, March 6, 2023

1. Welcome & Overview: ***Collin Felch, Ed.D., Assistant Super Intendent, Vista Heritage Global Academies***

2. Vista Heritage Global Academies Santa Ana Project Details:
Team: ***Don Wilson, Don Wilson, Ed.D., Superintendent, Vista Heritage Global Academies & Collin Felch, Ed.D., Assistant Super Intendent, Vista Heritage Global Academies***
 - Introduction to the Vista Organization
 - Purpose of District office Space
 - Purpose of Outdoor Site improvements
 - Why Santa Ana
 - Benefits on converting what was on parcel previously into what it can/will be & how does that benefit the community?

3. Land Use Team
 - Site Overview & Zoning: ***Vince Fergoso, Principal, The Fergoso Group***
 - Lot Size
 - Current Zone & use
 - Proposed Zone Amendments:
 - Proposed Use
 - Requested Application
 - Next Steps & Where we are at

4. Architecture Team – ***Tony Pacheco-Taylor, AIA, LEED® AP, Studio W Architects,***
 - Building Gross ft²
 - Exterior architectural Improvements
 - Site Accessibility modifications
 - Interior spaces
 - Interior Upgrades created during improvements
 - Architectural features
 - Overall site and structural improvements summary

5. ***Transportation Engineer & Robert Uv, Traffic Engineer, Urban Xroads***
 - Previous Pick up and Drop off & Revised Pick up and Drop Off



Vista Charter Public Schools District Office & Outdoor Space

Coming 2024



INTRODUCTION TO THE VISTA ORGANIZATION

Who we are:

- Vista Charter Public Schools operates 6 free public charter schools in Los Angeles and Orange County serving a total of 1,500 students.

Purpose of District office Space:

- Vista Charter Public Schools Headquarters
- Host Monthly Board Meetings



WHY SANTA ANA?

Location:

- 68% of VCPS student enrollment is currently in Orange County

Organizational Hub:

- Auto shop acquisition created an opportunity to have a district office located next to our largest school.



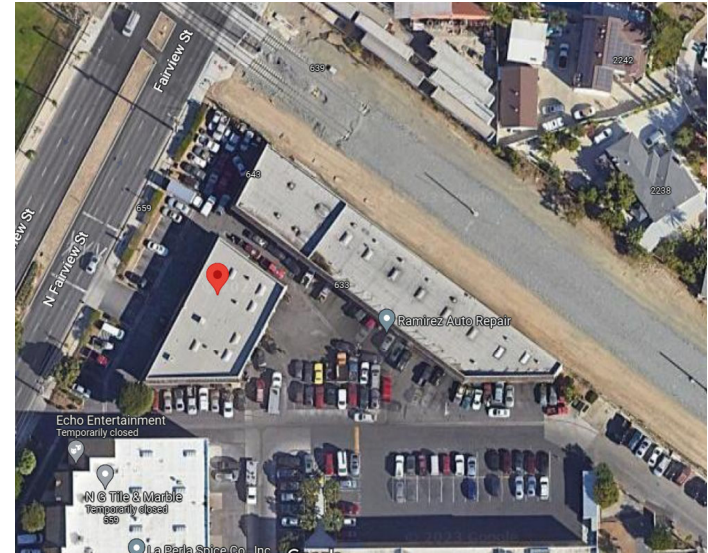
West Santa Ana Branch Transit Corridor

COMMUNITY IMPACT

- Beautifying dilapidated auto shop building



- Reducing homeless presence
- Significantly more parking vs. when Auto Shops were present

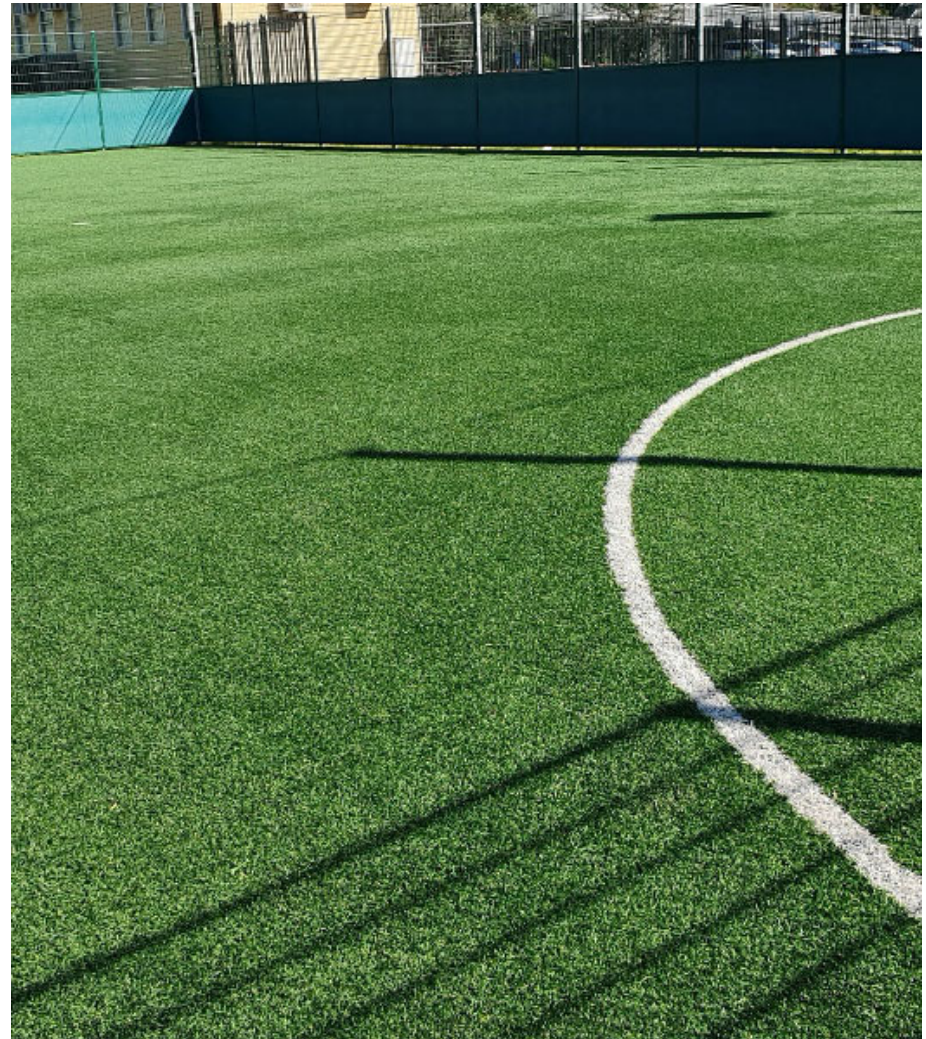


OUTDOOR SITE IMPROVEMENTS

- Addresses the needs the community requested
- Introduces outdoor play space for physical activities

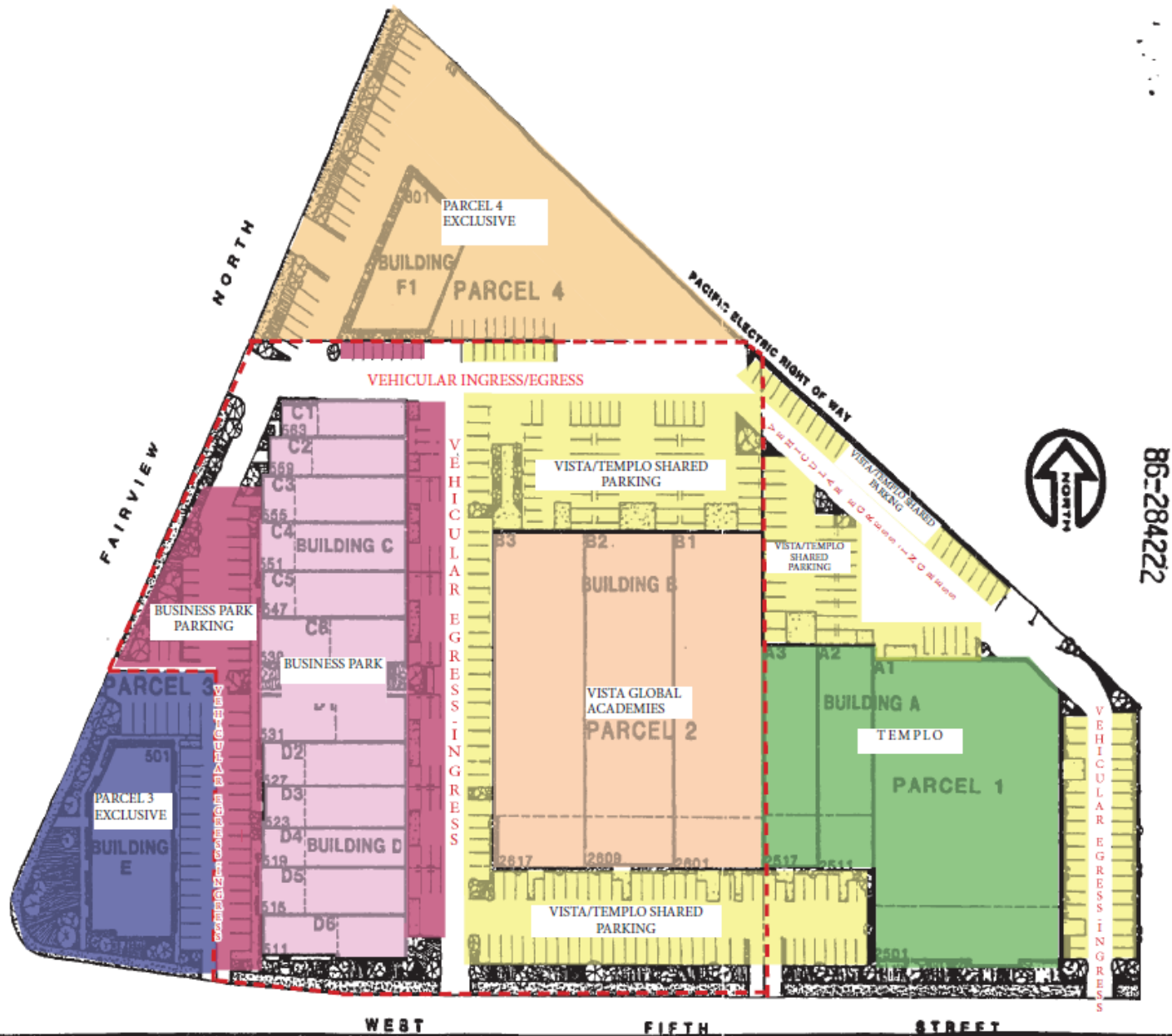


- Provides safe, beautiful outdoor space
- Provides additional parking spaces

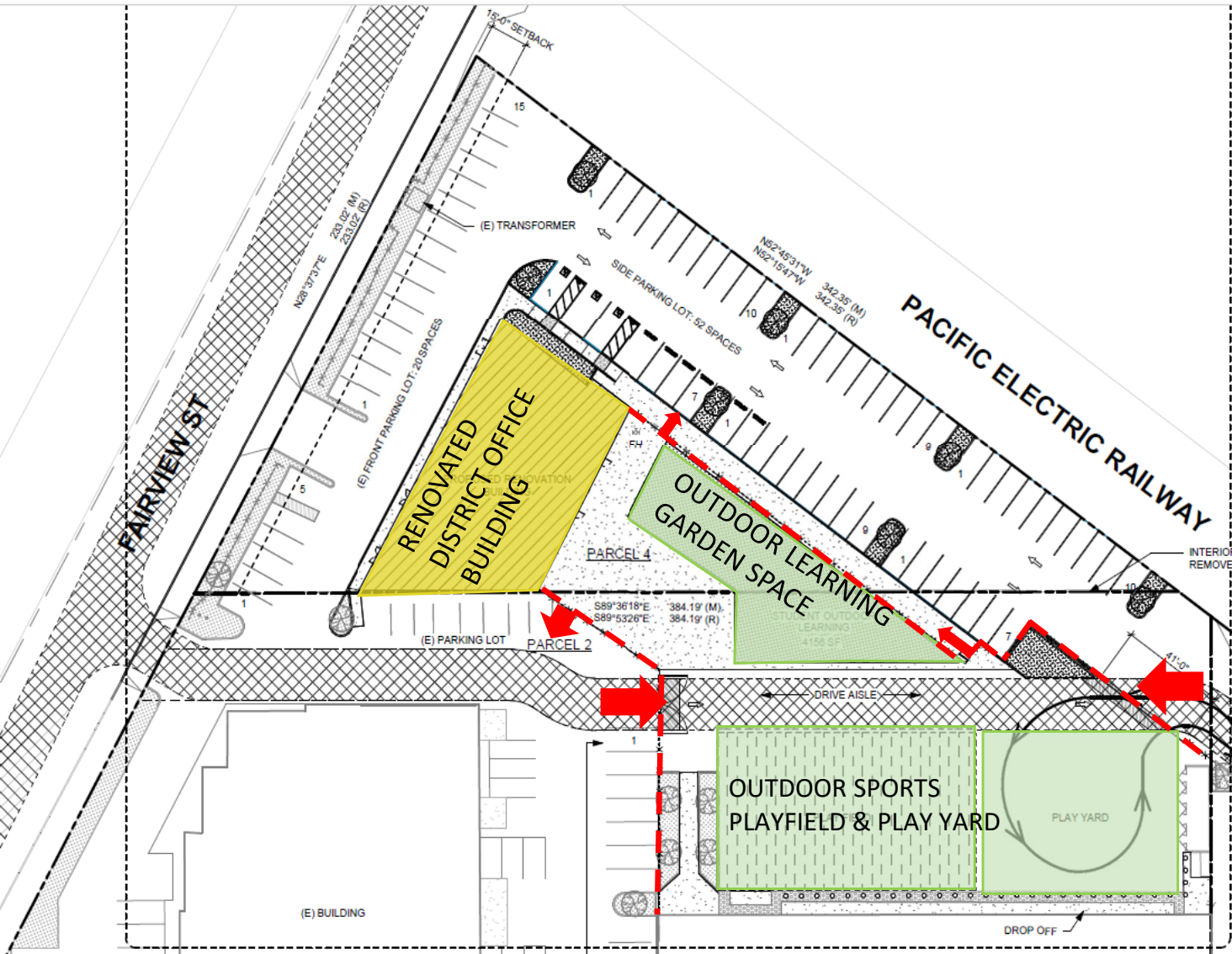


FAIRVIEW BUSINESS CENTER SITE PLAN

2609 W. 5TH ST. & 601 N. FAIRVIEW PARCEL DIVISION AND PARKING DESIGNATION MAP







ENLARGED SITE PLAN



- Increased Parking: 52 New Stalls
- Increased Landscaping
- Increased Outdoor Play Space
- New beautiful Offices
- New Fencing

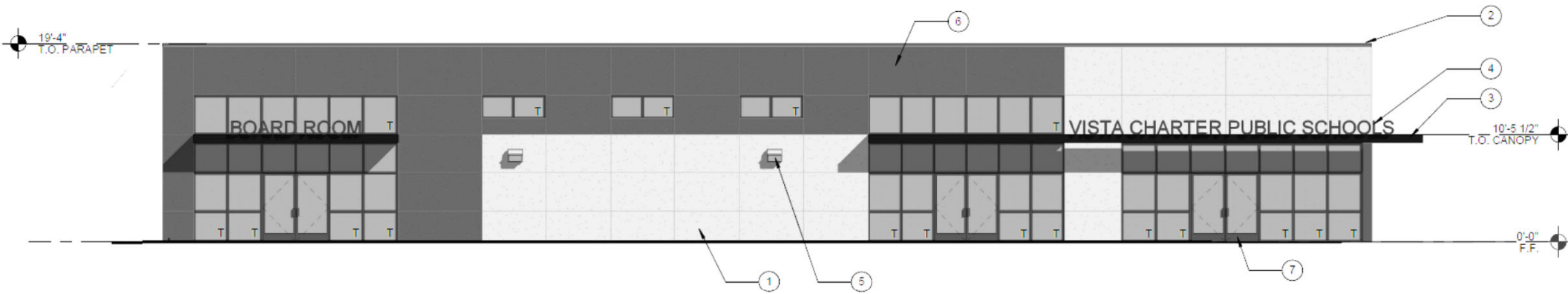
KEY

Outdoor landscaping	
District office	
Fencing	
Gate Ingress/Egress	

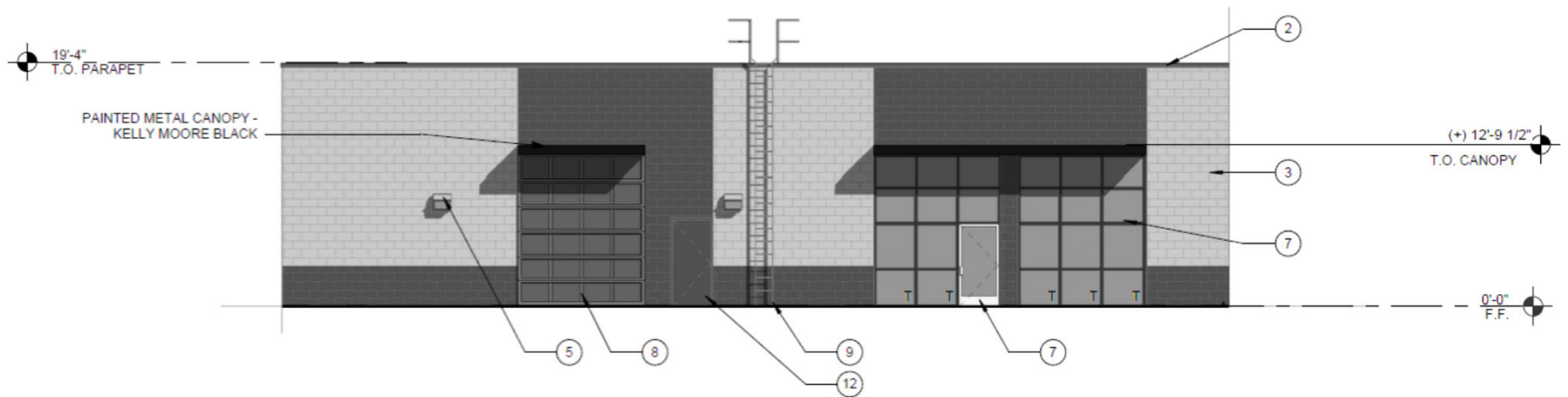
PROJECT DETAILS

- Additional lot to provide support functions (does not increase school capacity)
- Provides 72 additional parking spaces/reduces impact to Business Park
- Enhances student drop-off/pick-up functions
- Encourages commercial use that is consistent with Business Park uses
- Requires additional Sunshine Meeting (similar to this meeting)
- Requires zone change for automotive parcel and amendment to Operational Standards to allow outdoor play area
- Planning Commission review and recommendation
- City Council action

DISTRICT OFFICE IMPROVEMENTS

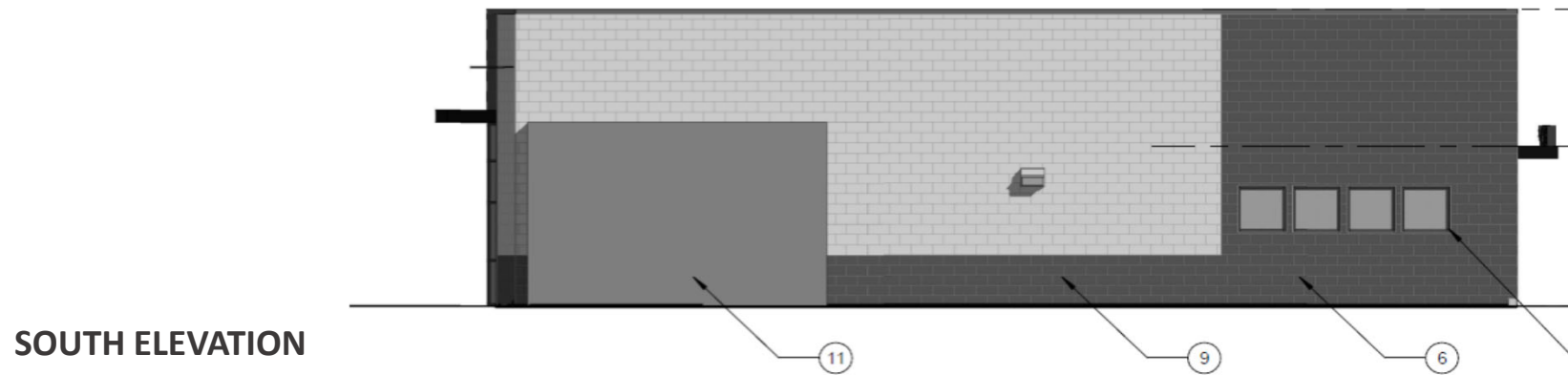
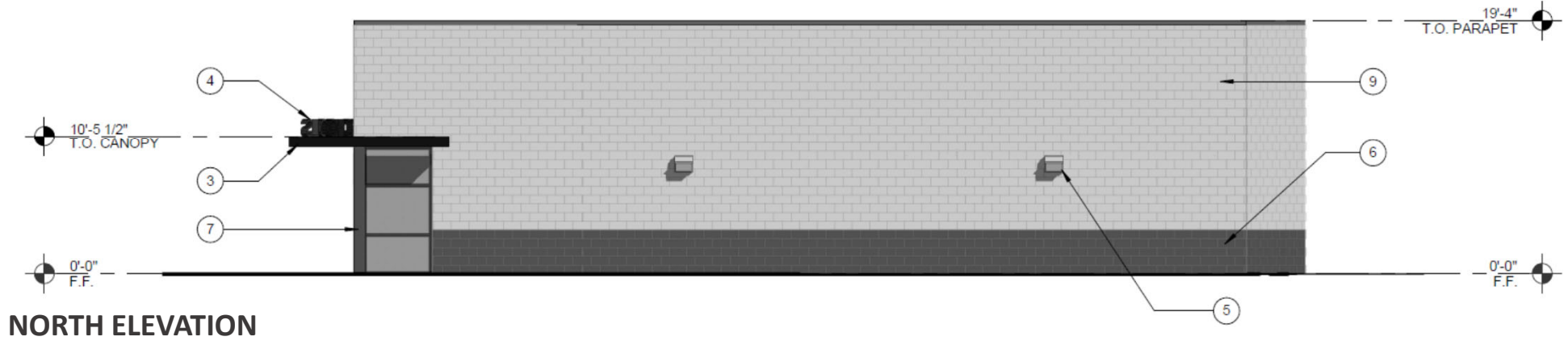


WEST ELEVATION



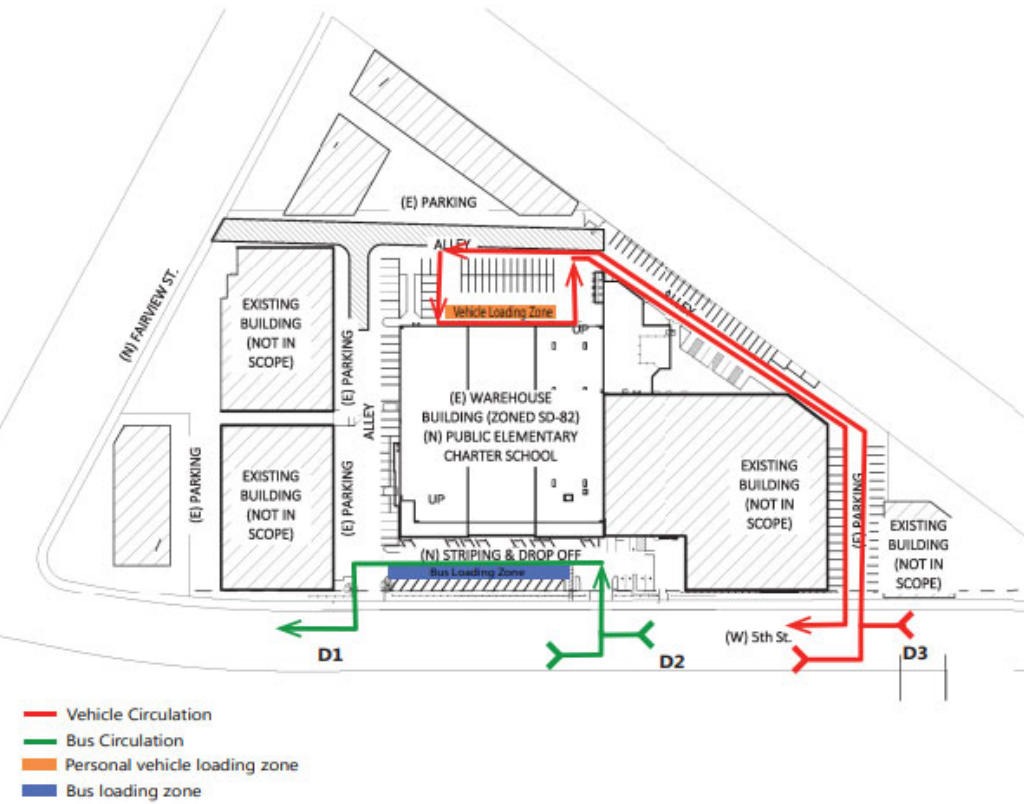
EAST ELEVATION

DISTRICT OFFICE IMPROVMENTS

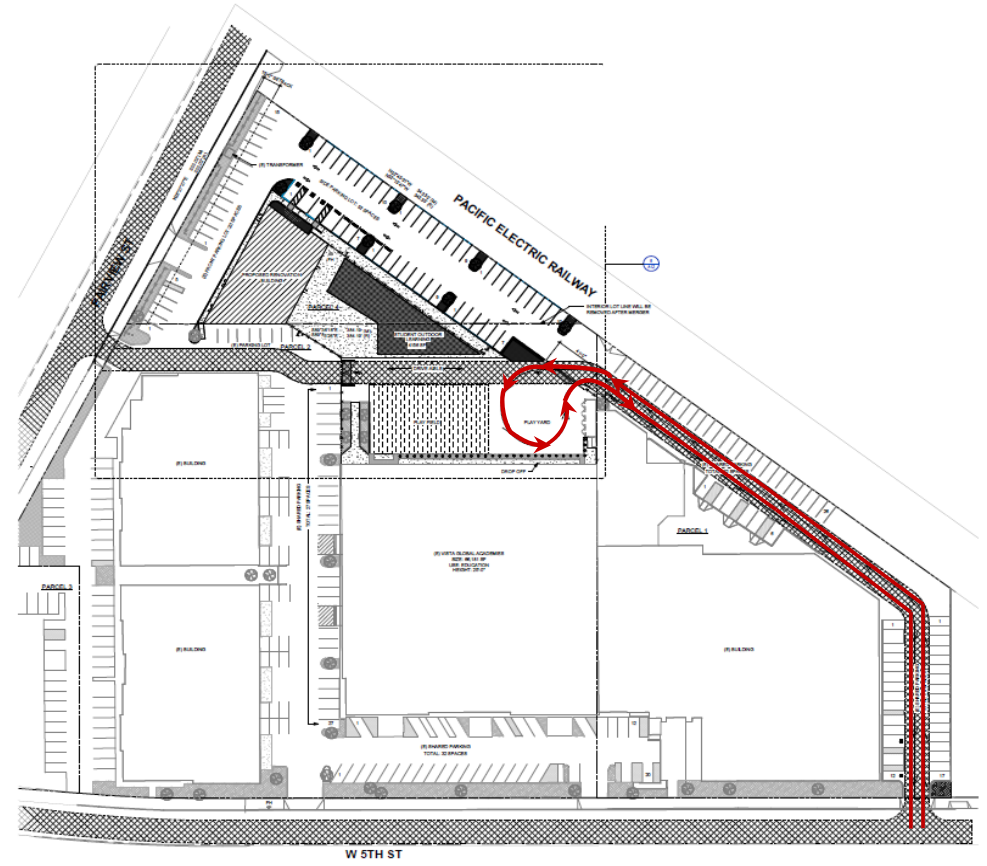


DROP OFF AND PICK ROUTE MODIFICATIONS

CURRENT ROUTE

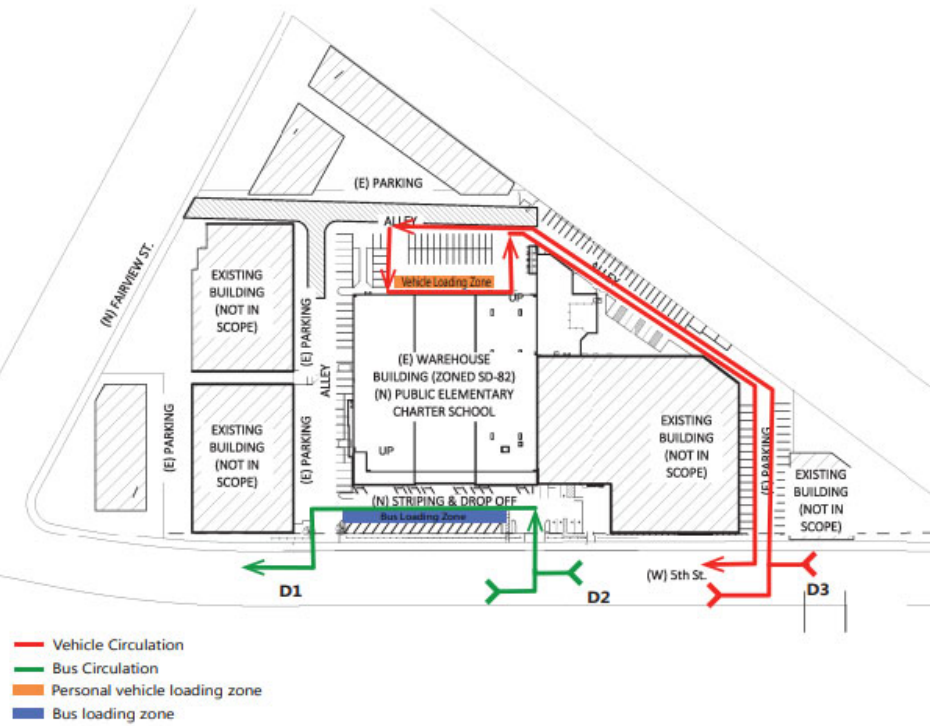


PROPOSED ROUTE

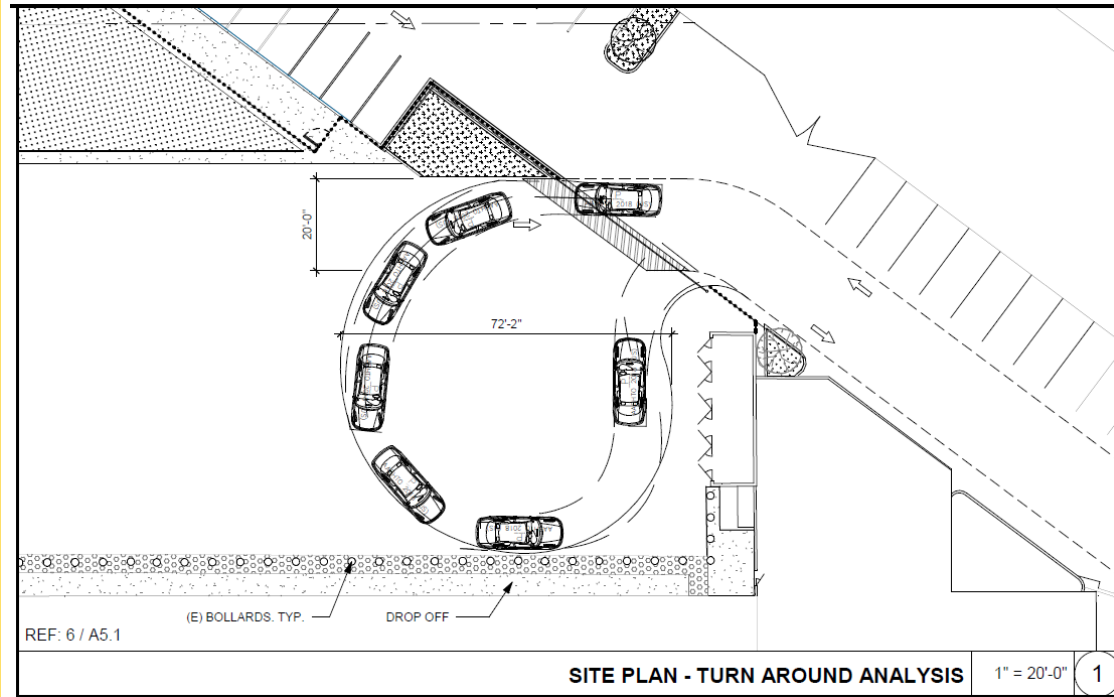


DROP OFF AND PICK ROUTE MODIFICATIONS

CURRENT ROUTE



PROPOSED ROUTE





VISTA CHARTER PUBLIC SCHOOLS

BOARD ROOM

THANK YOU!

Vista Charter Public Schools
Sunshine Ordinance Meeting Notes – March 6, 2023

Q: Where will the outside play area be located?

A: Where the parking lot directly behind the building is currently located.

Q: How big is the play area?

A: Unsure. We will check and follow-up.

Q: Will the play area affect the flow of traffic?

A: No plans to impact the existing traffic flows. The Fairview Avenue curb cut will be used by the new office tenant.

Q: Where is the playground located on the master site plan?

A: Playground area was pointed out on the map.

Q: Why is the zoning being changed?

A: To allow an office use that is 100 percent office - the current M-1 zoning does not allow a building that is 100 percent office. Also, we are proposing to amend the operational standards and allow an outdoor play area (currently prohibited).

Q: What fencing is proposed?

A: Fencing to secure the outdoor play area and outdoor learning area will be installed (fencing identified on the site plan)

Q: Concerns with trucks (up to 50 feet in length) being able to turn west to Fairview Street with the change in circulation

A: Will look at ways to accommodate truck traffic

Q: Concerns that the project may impact and/or violate existing CC&R's

A: Both the school and the association will separately look at the CC&Rs for any impacts to the document.

Q: Will fencing separate the children's play area from vehicular traffic?

A: Yes

Q: Concerns with the safety of students and existing pinch points at the south and west ends of the parking lot adjacent to the school and industrial building.

A: Traffic engineer to review pinch points and identify potential solutions

Q: Project needs to consider potential parking violations by Templo Calvario

A: Will work with the City to identify any potential violations of existing entitlements

Q: What is the timing of the project?

A: School would like to have all improvements completed by beginning of 2024 school year

Q: Why outside playground now when original approval had indoor play area only?

A: Will provide response at later date