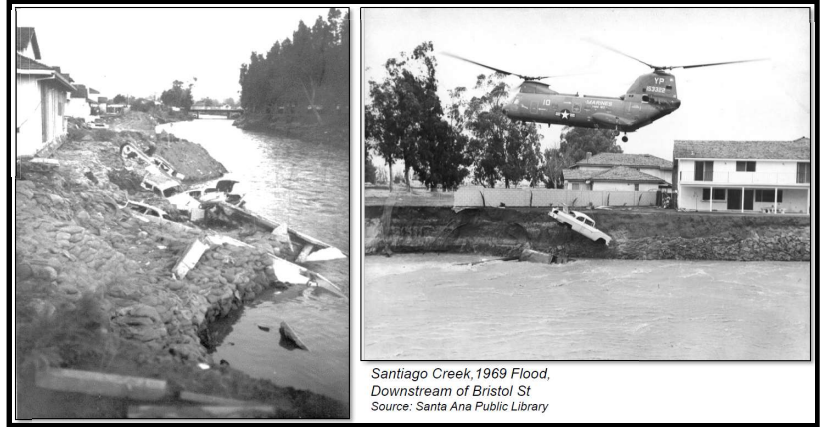


## SANTIAGO CREEK Flood Risk Management Project



Santiago Creek, 1969 Flood, Downstream of Bristol St  
Source: Santa Ana Public Library

### Reducing Risk

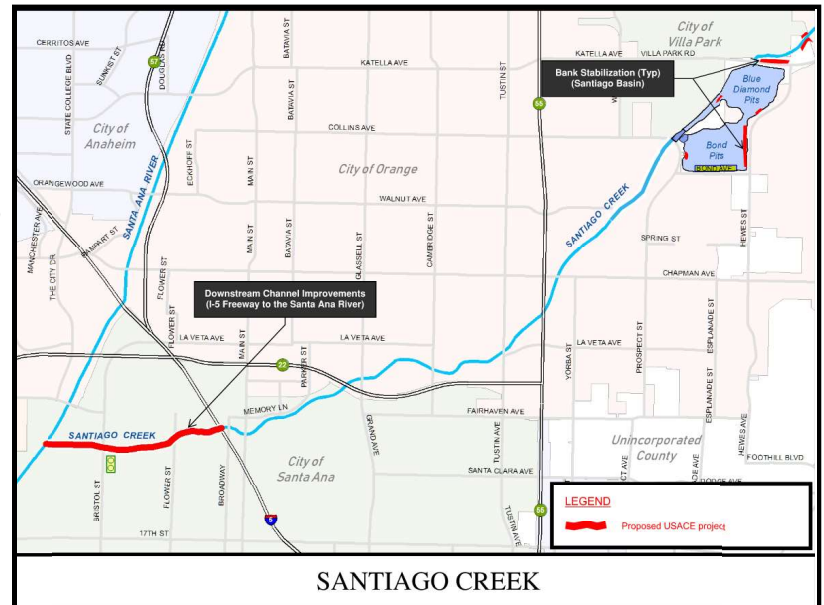
The Santiago Creek Project would address the following flood control-related issues:

- Major storms cause flooding with high flow rates in a highly urbanized area.
- High flows result in erosion along creek which may damage adjacent homes.
- Existing non-native vegetation within the creek reduces channel capacity.
- Major erosion occurring at the Santiago Basin which is used to detain flood waters

### WHY

- The Santiago Creek is the largest watershed (102 Sq. Mi.) tributary to the Santa Ana River downstream of Prado Dam
- The Santiago Creek project is authorized under the Water Resources Development Act (WRDA) 1986 (PL-99-662)
- The improvements were based on the recommendations of the Phase I (1980) & Phase II (1988) General Design Memorandum (GDM)
- To contain the 100-year storm, providing flood protection for approximately 74,000 people
- Rehabilitate the creek between the I-5 Freeway and the Santa Ana River confluence for improved erosion protection and conveyance
- Stabilize the slopes of the Santiago Basin

### WHERE



## SANTIAGO CREEK

## Flood Risk Management Project

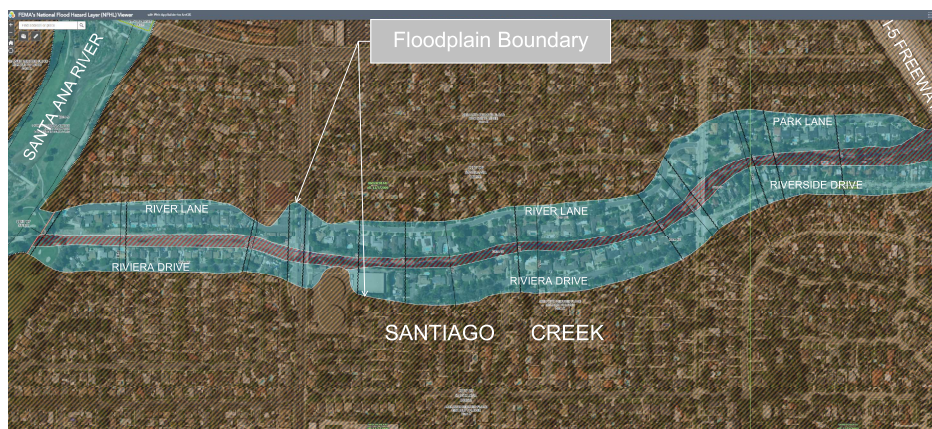
### WHAT

- In December 1989, the 3 local flood control districts (Orange, Riverside and San Bernardino) entered into a Local Cooperation Agreement (LCA) with the US Army Corps of Engineers to construct the Santa Ana River Mainstem Project, including Santiago Creek.
- In January 2021, an amendment to the LCA was approved to provide funding for the Lower Santa Ana River through the Bipartisan Budget Act of 2018 (BBA 2018) at 100% federal cost, subject to availability of funds.
- In the LCA amendment, the Santiago Creek Project was not included in the BBA 2018 funding since it was not ready for construction at that time.
- The Santiago Creek Project, however, received funding of \$2.85M to develop an Engineering Documentation Report (EDR) to update the design to reflect changes to the project area since 1988, and to incorporate modernized engineering processes.

### WHEN

- A public meeting was held on January 26, 2023 to present design concepts to affected residents
- Ongoing preparation of EDR to develop the final design (April 2023)
- Update construction cost estimate (April 2023)
- Prepare environmental documents to comply with National Environmental Policy Act (NEPA)/California Environmental Quality Act (CEQA) to be completed by May 2023 followed by a public meeting
- Review by the Change Control Board to determine if project can be funded (September 2023)
- If funds are identified, it would take approximately 5 years to design and construct the project

### FEMA FLOODPLAIN



# OC CIVIC CENTER

BUILDING & SERVICE DIRECTORY

SCAN QR CODE TO  
DOWNLOAD MAP AND  
ACCESS TRANSLATIONS



中文 한국어  
Español Tiếng Việt

## PARKING INFORMATION

### P1 Stadium Parking Structure

1020 West Civic Center Drive

#### Rates

\$0.50 each 15 minutes or  
any portion thereof  
\$15 Maximum Daily Rate

#### Hours & Payments

**Cashier on Duty:** 24/7/365  
• Credit cards accepted at all exit lanes.  
• Pay-on-Foot/Cash Payment Machine 24/7/365

### P2 Super Block

West 6<sup>th</sup> Street at N. Flower Street

#### Rates

\$1 each 15 minutes or  
any portion thereof  
\$20 Maximum Daily Rate

#### Hours & Payments

**Cashier on Duty:**  
Mon-Fri, 6:30 a.m. - 11:30 p.m.  
• Credit cards accepted at all exit lanes.

### P3 Courthouse/Library Parking Structure

690 West Civic Center Drive

#### Rates

\$1 each 15 minutes or  
any portion thereof  
\$20 Maximum Daily Rate

#### Hours & Payments

**Cashier on Duty:**  
Mon-Fri, 5:30 a.m. - 9 p.m.  
• Credit cards accepted at all exit lanes.  
• Closed weekends, major holidays.

### P4 CAN Surface Parking Lot

630 North Broadway Street

#### Rates

\$1 each 15 minutes or  
any portion thereof  
\$20 Maximum Daily Rate

#### Hours & Payments

• Mon-Fri, 7 a.m. - 7 p.m.  
• Credit cards accepted at exit column.  
• Pay-on-Foot/Cash and Credit Payment Machine  
• Closed weekends, major holidays.

### P5 Historic Courthouse Metered Surface Parking Lot

Civic Center Dr. at Broadway (Entry/Exit at Civic Center Dr.)

#### Rates

\$.05 = 2 min. \$.10 = 4 min.  
\$.25 = 10 min. \$1.00 = 40 min.  
\$1.50 = 60 min.

#### Hours & Payments

• Mon-Sat, 8 a.m. - 10 p.m.  
• Pay by credit card or by coin at meter.  
• 2-hour maximum limit per stay.

### P6 Appellate Court Parking Structure

601 W. Santa Ana Blvd. (Automated Entry/Exit at Parton/Santa Ana Blvd.)

#### Rates

\$1 each 15 minutes or  
any portion thereof  
\$20 Maximum Daily Rate

#### Hours & Payments

• Credit cards accepted at all exit lanes.  
• Pay-on-Foot/Cash Payment Machine 24/7/35

### P7 Twin Towers Parking Structure

1002 West Santa Ana Boulevard

#### Rates

\$1 each 15 minutes or  
any portion thereof  
\$20 Maximum Daily Rate

#### Hours & Payments

**Cashier on Duty:** Mon-Fri 10:30 a.m. - 7 p.m.  
**Office:** Mon-Fri, 8 a.m. - 4:30 p.m.  
• Credit cards accepted at all exit lanes.  
• Rolling gates open Mon-Fri 5 a.m. - 7 p.m.  
• Closed weekends, major holidays.

### P8 Transit Tower Parking Structure

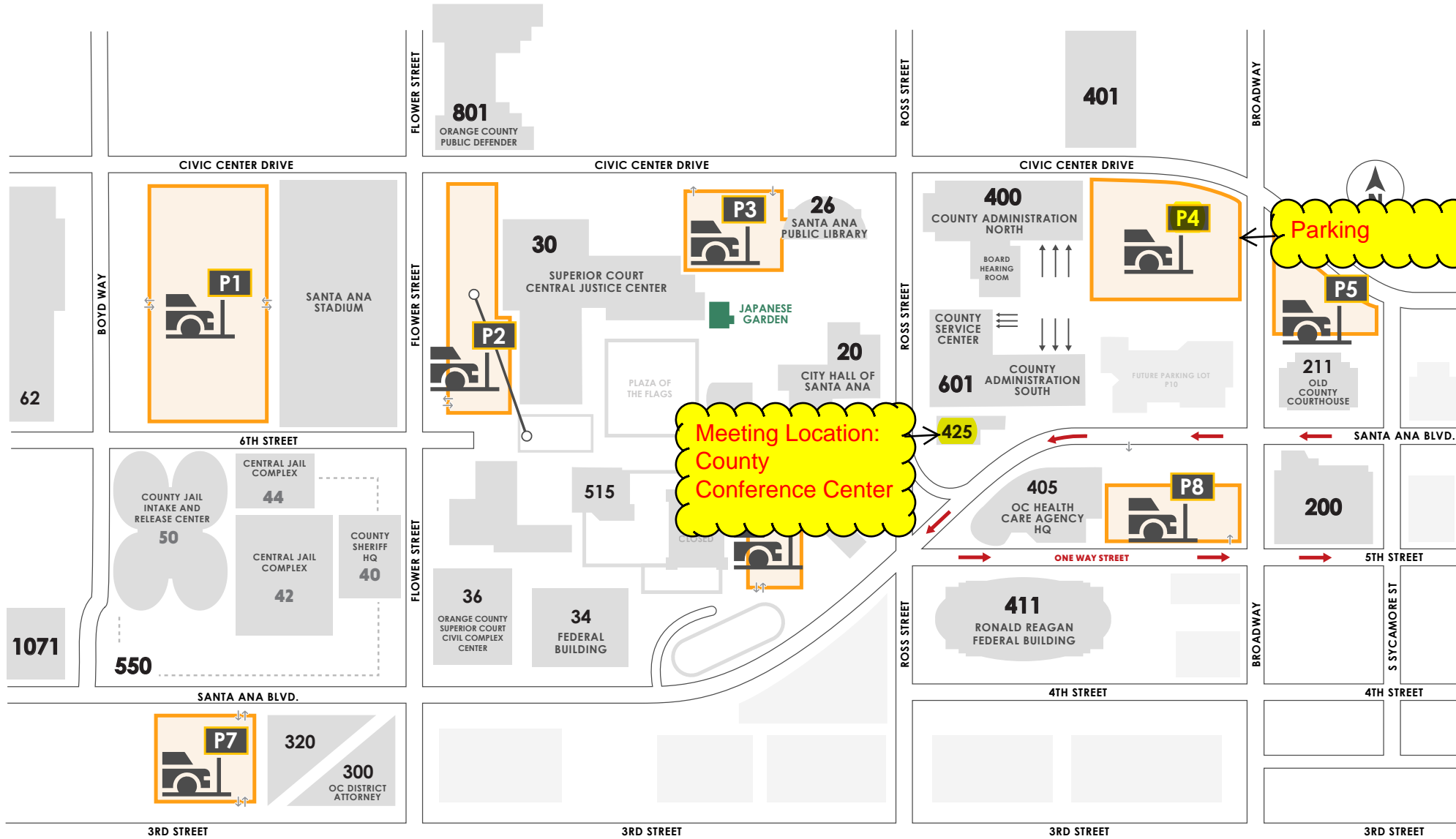
301 West 5<sup>th</sup> Street

#### Rates

\$1 each 15 minutes or  
any portion thereof  
\$20 Maximum Daily Rate

#### Hours & Payments

**Cashier on Duty:** Mon-Fri, 7 a.m. - 7 p.m.  
• Credit cards accepted at all exit lanes.  
• Rolling gates open Mon-Fri 7 a.m. - 7 p.m.  
• Closed weekends, major holidays.



# 400

## County Administration North (CAN) / Hall of Administration

400 West Civic Center Drive | (714) 834-2345

### Board of Supervisors

- First District .....(714) 834-3110
- Second District.....(714) 834-3220
- Third District .....(714) 834-3330
- Fourth District .....(714) 834-3440
- Fifth District .....(714) 834-3550

### Clerk of the Board

Assessment Appeals ..... (714) 834-2331  
Board Services ..... (714) 834-2206

### County Counsel

(714) 834-3300

### County Executive Office

#### - Deputy County Executive Office

Office of Care Coordination,  
Performance Management & Policy

#### - Human Resource Services

Administrative Services, Central  
Human Resource Services, Employee  
Benefits, Employee & Labor Relations,  
HRS Operations, Learning &  
Organizational Development

#### - Finance Office

Finance & Budget, Procurement,  
Public Finance, Risk Management

#### - Government & Community Relations

Administration & Special Projects,  
Communications, Legislative Affairs

#### - Real Estate Services

Land Development, Infrastructure,  
Transactions/Special Projects,  
Lease Administration

### OC Health Care Agency

ochealthinfo.com

Accounting, Authority & Quality Improvement Services, Information Technology,  
Mental Health & Recovery Services, Purchasing

# 601

## County Administration South (CAS) / County Service Center (1st Floor)

601 North Ross Street | (714) 667-8800

### OC Clerk-Recorder

(714) 834-2500

- Document Recording Services
- Vital Records (Birth/Death/Marriage)
- Real Property Records
- Fictitious Business Name
- Notary Public/Oath Filing
- Environmental Impact Report
- Process Server
- Legal Document Assistance
- Professional Photo Copier
- Unlawful Detainer
- Passport Services

### OC Public Works

(714) 667-8800

- Building Permits
- Encroachment Permits
- Planning and Zoning
- Inspections
- Code Enforcement
- Permit Record Research
- Addressing
- Map and Parcel Record Research
- Flood Control

### OC Waste & Recycling

(714) 834-4000

### Office of Care Coordination

(714) 834-5000

### Treasurer-Tax Collector

(714) 834-3411

- Pay Property Tax
- Drop-Off Tract Map
- Mobile Home Tax Clearance Certificate

### Internal Audit

(714) 834-5475

# 425

### County Conference Center

425 West Santa Ana Boulevard

### OC Health Care Agency

# 200

## Office of Vital Records, Custodian of Records and California Children Services

200 West Santa Ana Boulevard  
(714) 480-6700

# 401

### OC Links

401 West Civic Center Drive  
(855) 625-4657

# 405

### Headquarters

405 West 5<sup>th</sup> Street  
ochealthinfo.com

### OC Sheriff's Department

# 320

### Professional Standards Division

320 North Flower Street  
(714) 834-5100

# 550

### County Jail, OC Sheriff's Department Headquarters

550 North Flower Street

- Central Jail Complex (42, 44)
- Intake and Release Center (50)  
(714) 647-4666
- Sheriff's Headquarters (40)  
(714) 647-7000

# 1071

### Coroner Division

1071 W. Santa Ana Boulevard  
(714) 647-7400

### Additional County Services

# 36

### Orange County Superior Court Civil Complex Center

751 West Santa Ana Boulevard  
(657) 622-6878

# 211

### Old County Courthouse

211 West Santa Ana Boulevard  
(714) 834-2500

- Marriage License, Civil Wedding Ceremonies, Archives
- Assessment Appeals Hearings
- Historical Commission

# 300

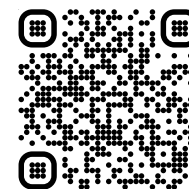
### District Attorney

300 North Flower Street  
(714) 834-3600

# 801

### Orange County Public Defender

801 Civic Center Drive West, Suite 400  
(657) 251-6090



中文 한국어  
Español Tiếng Việt



## FEDERAL

# 34

### Santa Ana Federal Building

34 Civic Center Plaza

# 411

### Ronald Reagan Federal Building and United States Courthouse

411 West 4<sup>th</sup> Street

# 801

### Internal Revenue Service

801 Civic Center Drive W.



## STATE

# 23

### 4<sup>th</sup> District Court of Appeal

601 West Santa Ana Blvd.

# 515

### Orange County Public Law Library

515 North Flower Street

# 30

### Superior Court Central Justice Center

700 Civic Center Drive W.  
• Civil, Criminal, Traffic



## CITY

# 20

### City Hall of Santa Ana

20 Civic Center Plaza  
(714) 647-5400

# 26

### Santa Ana Public Library

26 Civic Center Plaza

# 62

### Santa Ana City Jail

62 Civic Center Plaza