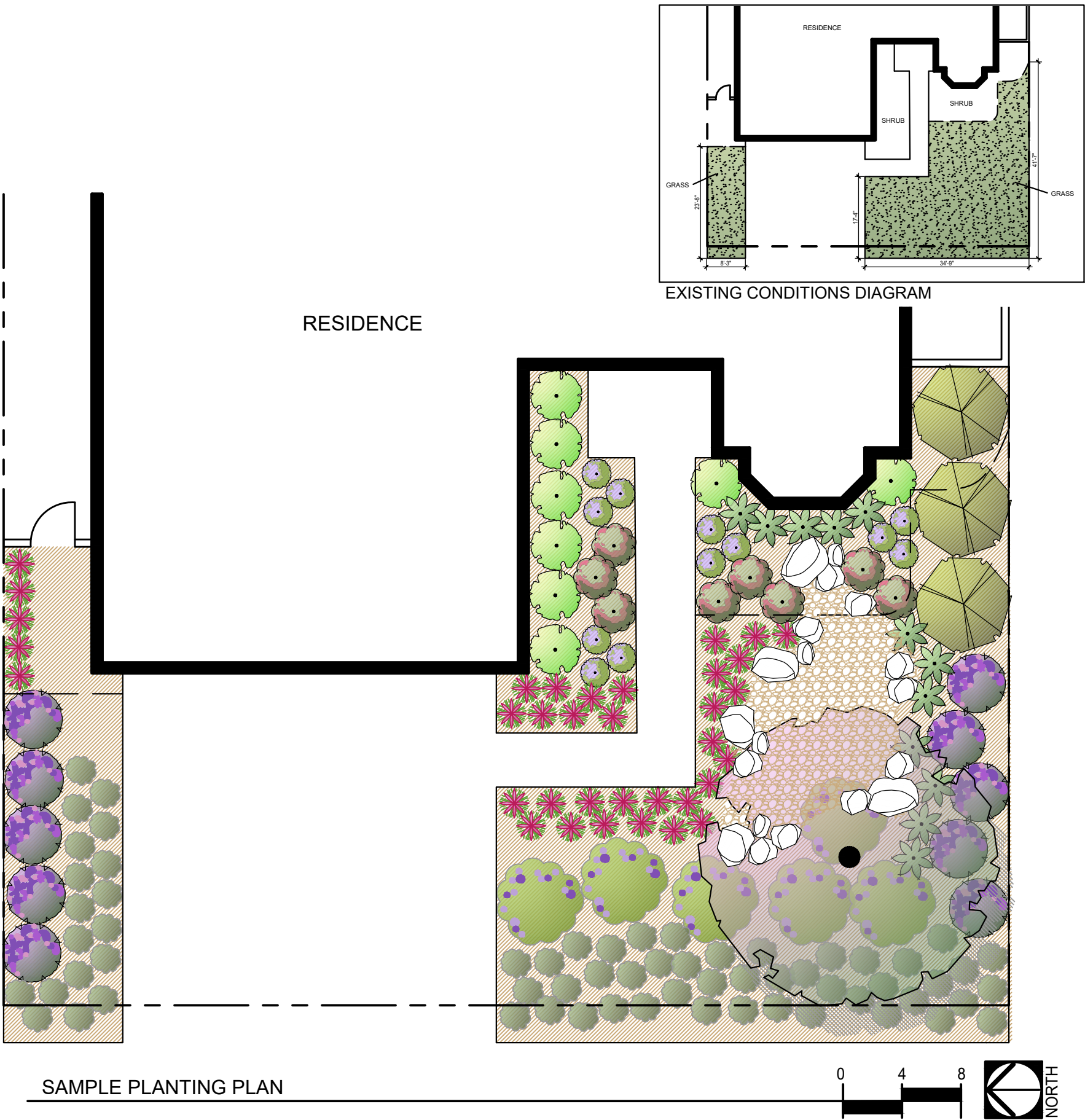













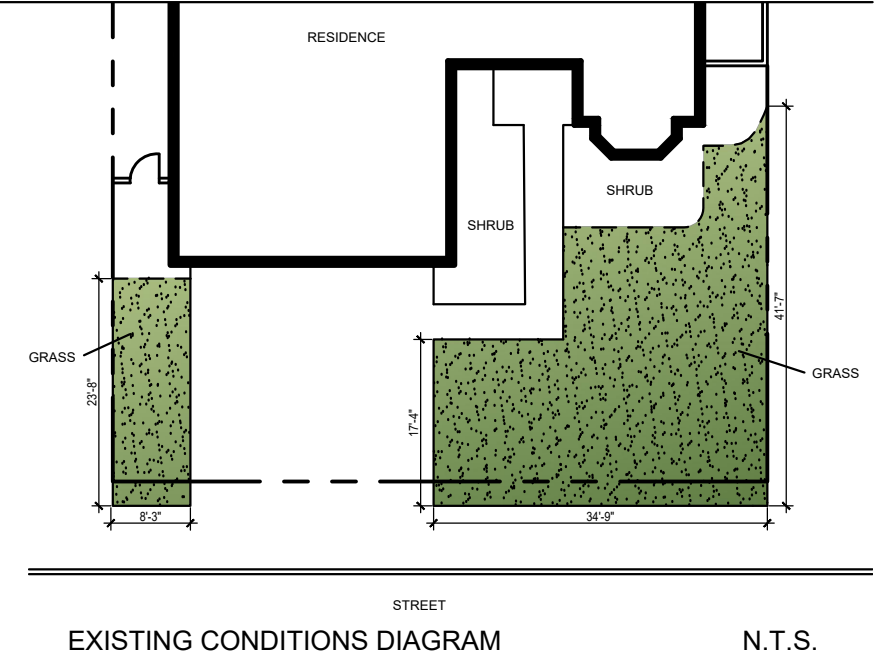
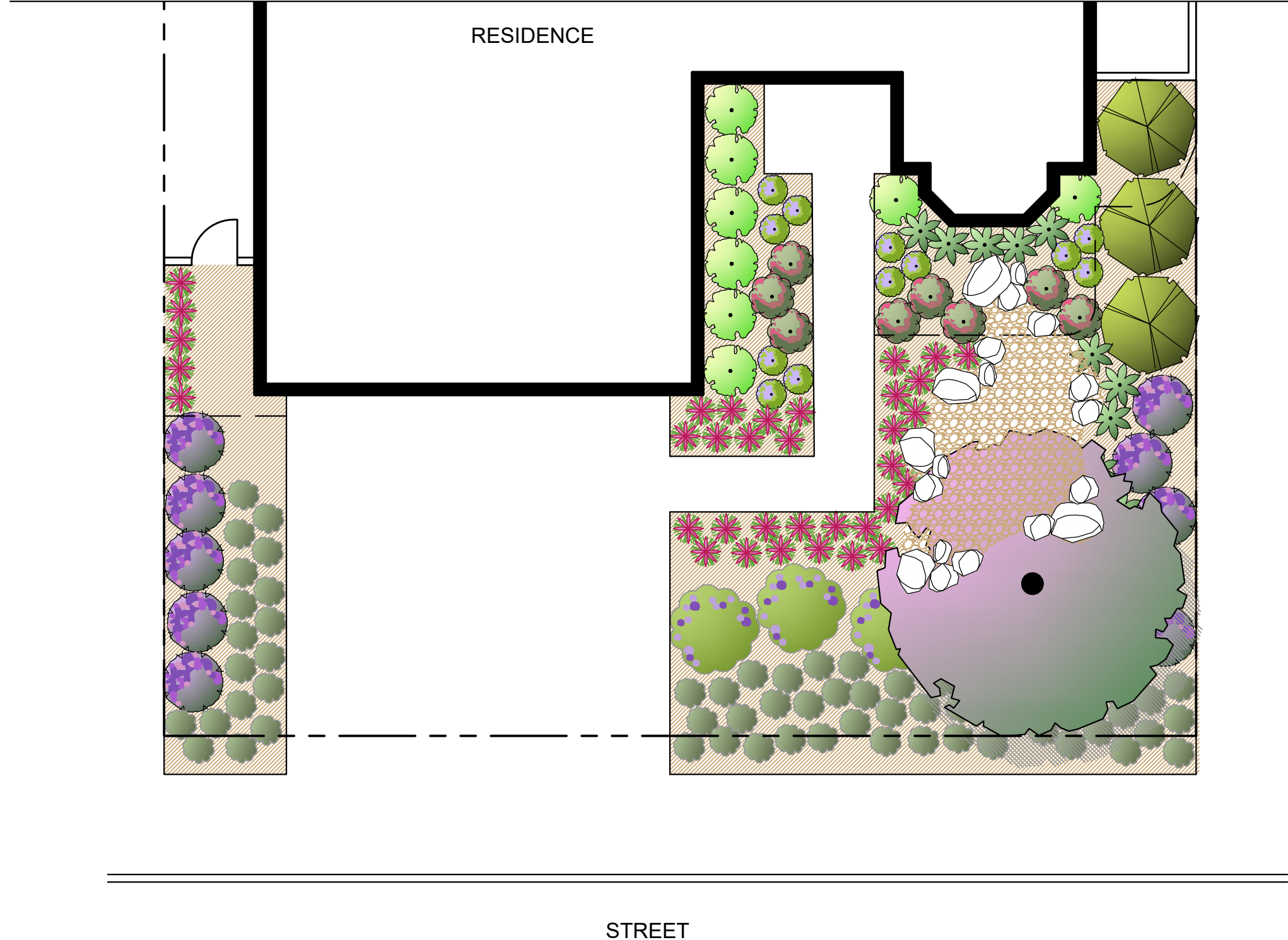
CALIFORNIA NATIVE LANDSCAPE SAMPLE PLAN 1



PLANT KEY

Symbol	Botanical Name / Common Name
	<u>TREES</u> CHILOPSIS LINEARIS / DESERT WILLOW
	<u>SCREEN SHRUBS</u> RHAMNUS CALIFORNICA / COFFEEBERRY
	<u>MEDIUM SHRUBS</u> ARCTOSTAPHYLOS D. 'SUNSET' / SUNSET MANZANITA
	HESPERALOE PARVIFLORA / RED YUCCA
	SALVIA CLEVELANDII / CLEVELAND SAGE
	<u>SMALL SHRUBS</u> EPILOBIUM CALIFORNICUM / CALIFORNIA FUCHSIA
	ERIOGONUM G. RUBESCENS / RED BUCKWHEAT
	IRIS DOUGLASIANA / DOUGLAS IRIS
	<u>GROUNDCOVERS</u> ARTEMISIA CALIFORNICA 'MONTARA' / CALIFORNIA SAGEBRUSH
	CEANOTHUS HEARSTIORUM / HEARST RANCH BUCKBRUSH
	BRUSH OR CHIPPED MULCH





DESIGN INTENT:

Here we have native plants and trees. This is a great choice if you would like to attract butterflies and hummingbirds, and support native habitat. The natural look can provide vibrant color from shrub and tree blooms, primarily during late winter and early spring.



DISCLAIMER:
As a sample, this plan is intended to provide inspiration for your own landscape. Plant performance varies according to many factors including site conditions such as sun, shade, drainage, soil type, and competition from other plants. When established, Native plants can have very low water requirements. However, under cultivation, they may grow faster and larger, and have shorter life spans than other plant types which have been bred specifically for landscapes.

CALIFORNIA NATIVE 1
SAMPLE PLANTING PLAN

PLANTING LEGEND

Symbol	Botanical Name / Common Name	Mature Size H x W	Qty.	Water Requirement	Sun/Shade	Design Feature Key
TREES						
	CHILOPSIS LINEARIS / DESERT WILLOW	30' x 25'	1	VL	FS	FL
SCREEN SHRUBS						
	RHAMNUS CALIFORNICA / COFFEEBERRY	6-8' x 6-8'	3	VL	FS/PS/S	EV
MEDIUM SHRUBS						
	ARCTOSTAPHYLOS D. 'SUNSET' / SUNSET MANZANITA	3-4' x 3-4'	8	L	FS/PS	FDN
	HESPERALOE PARVIFLORA / RED YUCCA	3-4' x 4-5'	17	VL	FS	AC
	SALVIA CLEVELANDII / CLEVELAND SAGE	4-5' x 4-5'	10	VL	FS	AC
SMALL SHRUBS						
	EPILOBIUM CALIFORNICUM / CALIFORNIA FUCHSIA	1-2' x 3-4'	10	VL	FS/PS	AC
	ERIOGONUM G. RUBESCENS / RED BUCKWHEAT	1-2' x 2-3'	39	VL	FS/PS	AC
	IRIS DOUGLASIANA / DOUGLAS IRIS	1-2' x 2-3'	12	L	FS/S	EV
GROUNDCOVERS						
	ARTEMISIA CALIFORNICA 'MONTARA' / CALIFORNIA SAGEBRUSH	1' x 2-3'	62	L	FS	SP
	CEANOTHUS HEARSTIORUM / HEARST RANCH BUCKBRUSH	<1' x 6-8'	9	L	FS/S	SP
	BRUSH OR CHIPPED MULCH					

NOTE:
REFER TO CALIFORNIA NATIVE PLANT PALETTE FOR ALTERNATIVE PLANT CHOICES.



CHILOPSIS LINEARIS



RHAMNUS CALIFORNICA



ARCTOSTAPHYLOS D. 'SUNSET'



HESPERALOE PARVIFLORA



SALVIA CLEVELANDII



EPILOBIUM CALIFORNICUM



ERIOGONUM G. RUBESCENS



IRIS DOUGLASIANA



ARTEMISIA CALIFORNICA 'MONTARA'



CEANOTHUS HEARSTIORUM



BRUSH OR CHIPPED MULCH

WATER REQUIREMENT
KEY

VL = VERY LOW
L = LOW
M = MODERATE

SUN/SHADE

FS = FULL SUN
PS = PART SUN
S = SHADE

DESIGN FEATURE KEY

AC = ACCENT
EV = EVERGREEN
FA = FALL COLOR
FDN = FOUNDATION PLANTS
FL = FLOWER
FR = FRUIT
GRS = ORNAMENTAL GRASS
GC = GROUNDCOVER

SUSTAINABILITY LEGEND



RAIN BARREL



ROCK GARDEN

***ALL PROJECTS MUST INCLUDE A MINIMUM OF 3 PLANTS PER 100 SQUARE FEET OF TURF REMOVED AND A LEAST ONE SUSTAINABILITY FEATURE. PARTICIPANTS CAN CHOOSE FROM SEVEN SUSTAINABILITY FEATURE, INCLUDING RAIN BARRELS, SWALES, DRY STREAM BEDS, BEMIS, ROCK GARDEN AND RAIN GARDENS.

