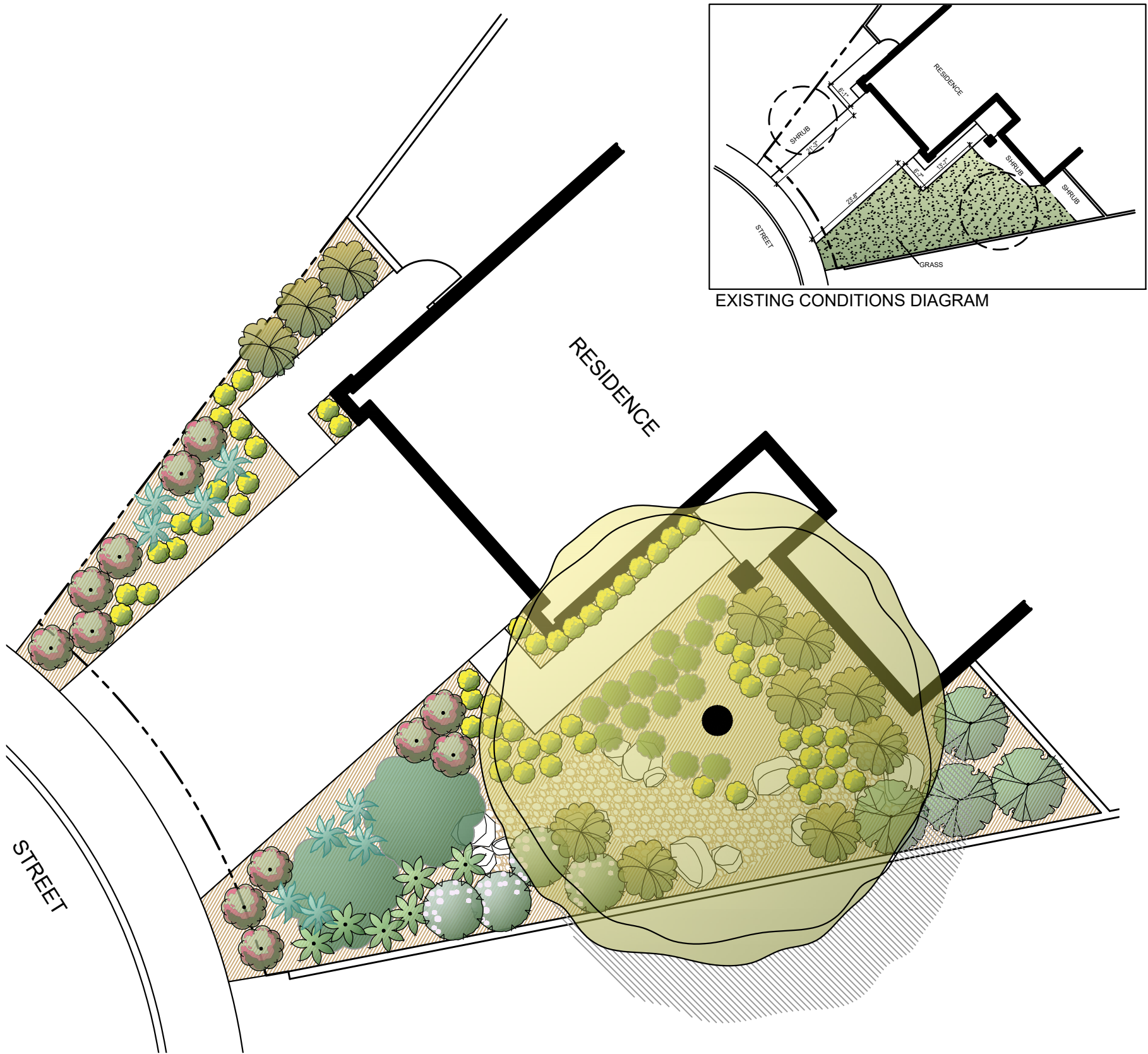
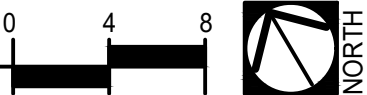


# CALIFORNIA NATIVE LANDSCAPE SAMPLE PLAN 3



SAMPLE PLANTING PLAN

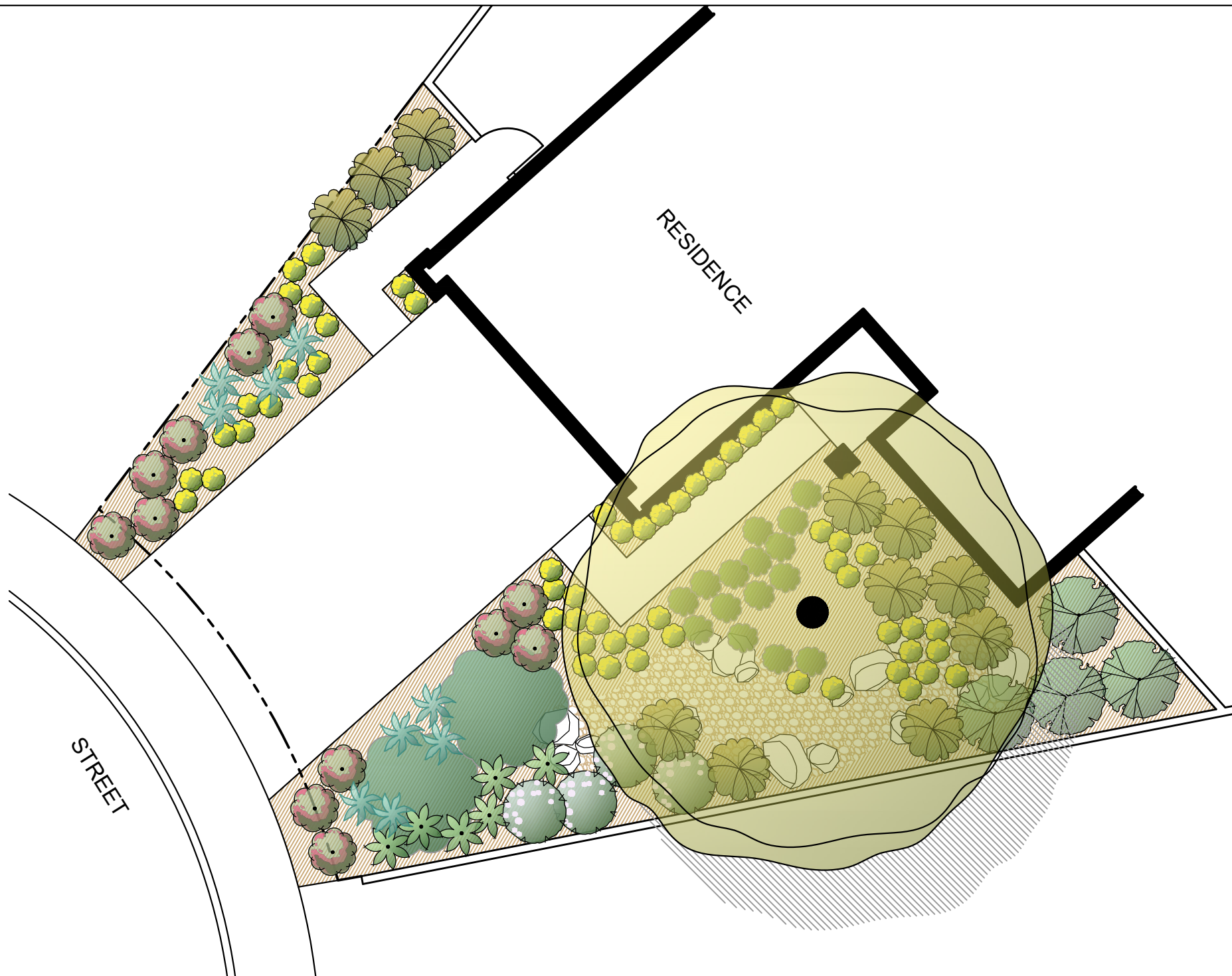


## PLANT KEY

Symbol	Botanical Name / Common Name
<u>TREES</u>	
	QUERCUS AGRIFOLIA / COAST LIVE OAK
<u>SCREEN SHRUBS</u>	
	CALLIANDRA CALIFORNICA / BAJA FAIRY DUSTER
<u>MEDIUM SHRUBS</u>	
	HESPERALOE PARVIFLORA / RED YUCCA
	MUHLENBERGIA RIGENS / DEER GRASS
	SALVIA ALPIANA / WHITE SAGE
<u>SMALL SHRUBS</u>	
	AGAVE DESERTI / DESERT AGAVE
	EPILOBIUM CALIFORNICA / CALIFORNIA FUCHSIA
	MIMULUS A. 'JELLY BEAN GOLD' / YELLOW MONKEY FLOWER
<u>GROUNDCOVERS</u>	
	ARCTOSTAPHYLOS E. 'CARMEL SUR' / CARMEL SUR MANZANITA
	FRAGARIA CHILOENSIS / SAND STRAWBERRY
	BRUSH OR CHIPPED MULCH

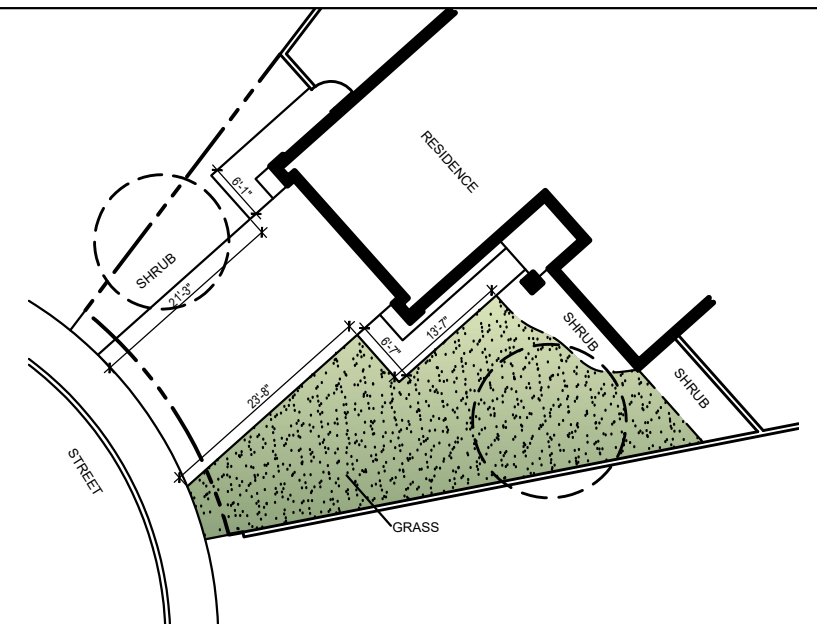






**DISCLAIMER:**

As a sample, this plan is intended to provide inspiration for your own landscape. Plant performance varies according to many factors including site conditions such as sun, shade, drainage, soil type, and competition. When established, Native plants can have very low water requirements but, under cultivation, may have shorter life spans than other plant types which have been bred specifically for landscapes.



EXISTING CONDITIONS DIAGRAM

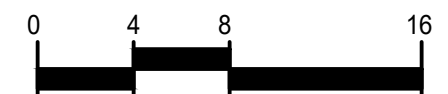
N.T.S.

**DESIGN INTENT:**

Here we have native plants and trees. This is a great choice if you would like to attract butterflies and hummingbirds, and support native habitat. The natural look can provide vibrant color from shrub and tree blooms, primarily during late winter and early spring.



CALIFORNIA NATIVE DESIGN INSPIRATION PHOTO



# CALIFORNIA NATIVE 3 SAMPLE PLANTING PLAN



PLANTING LEGEND

Symbol	Botanical Name / Common Name	Mature Size H x W	Qty.	Water Requirement	Sun/Shade	Design Feature Key
<u>TREES</u>						
	QUERCUS AGRIFOLIA / COAST LIVE OAK	40-60' x 40-50'	1	VL	FS	EV
<u>SCREEN SHRUBS</u>						
	CALLIANDRA CALIFORNICA / BAJA FAIRY DUSTER	6' x 6'	4	VL	FS	EV
<u>MEDIUM SHRUBS</u>						
	HESPERALOE PARVIFLORA / RED YUCCA	3-4' x 4-5'	6	VL	FS	AC
	MUHLENBERGIA RIGENS / DEER GRASS	4-5' x 4-6'	15	L	FS/PS/S	GRS
	SALVIA ALPIANA / WHITE SAGE	4-5' x 4-6'	5	VL	FS	EV
<u>SMALL SHRUBS</u>						
	AGAVE DESERTI / DESERT AGAVE	1-2' x 2-3'	12	L	FS	AC
	Epilobium californica / California Fuchsia	1-2' x 3-4'	12	VL	FS	AC
	MIMULUS A. 'JELLY BEAN GOLD' / YELLOW MONKEY FLOWER	1-2' x 1-2'	60	VL	FS/PS/S	AC
<u>GROUNDCOVERS</u>						
	ARCTOSTAPHYLOS E. 'CARMEL SUR' / CARMEL SUR MANZANITA	1' x 10'	2	L	FS/PS	EV
	FRAGARIA CHILOENSIS / SAND STRAWBERRY	6-12" x 2'	18	M	S	EV
	BRUSH OR CHIPPED MULCH					

NOTE:  
REFER TO CALIFORNIA NATIVE PLANT PALETTE FOR ALTERNATIVE PLANT CHOICES.

WATER REQUIREMENT  
KEY

VL = VERY LOW  
L = LOW  
M = MODERATE

SUN/SHADE

FS = FULL SUN  
PS = PART SUN  
S = SHADE

DESIGN FEATURE KEY

AC = ACCENT  
EV = EVERGREEN  
FA = FALL COLOR  
FDN = FOUNDATION PLANTS  
FL = FLOWER  
FR = FRUIT  
GRS = ORNAMENTAL GRASS  
GC = GROUNDCOVER



QUERCUS AGRIFOLIA



CALLIANDRA CALIFORNICA



HESPERALOE PARVIFLORA



MUHLENBERGIA RIGENS



SALVIA ALPIANA



AGAVE DESERTI



EPILOBIUM CALIFORNICA



MIMULUS A. 'JELLY BEAN GOLD'



ARCTOSTAPHYLOS E.  
'CARMEL SUR'



FRAGARIA CHILOENSIS



BRUSH OR CHIPPED MULCH

SUSTAINABILITY LEGEND



RAIN BARREL



ROCK GARDEN

\*\*\*ALL PROJECTS MUST INCLUDE A MINIMUM OF 3 PLANTS PER 100 SQUARE FEET OF TURF REMOVED AND A LEAST ONE SUSTAINABILITY FEATURE. PARTICIPANTS CAN CHOOSE FROM SEVEN SUSTAINABILITY FEATURE, INCLUDING RAIN BARRELS, SWALES, DRY STREAM BEDS, BEMIS, ROCK GARDEN AND RAIN GARDENS.

