



Department of
Toxic Substances
Control



CalEPA
California Environmental
Protection Agency

Community Informational Meeting-Cherry Aerospace

JULY 19, 2023

DELHI GROUNDWATER COMMUNITY



DTSC Staff

- Shahir Haddad, P.E. Branch Chief
- Angela Turner P.G. Engineering Geologist/Project Manager
- Andres Martinez Ph.D. Environmental Justice and Tribal Affairs Supervisor
- CY Jeng Ph.D. Toxicologist



Presentation outline

- Introduction to the Department
- Environmental Justice-Why we are here
- Cherry Aerospace Facility
 - Background
 - Current activities
 - Next steps
- Questions and Answers



DTSC's Role

- Regulatory agency within the California Environmental Protection Agency (Cal/EPA)
- Protection of the environment and California's communities
- Site and facility oversight
- Environmental reviews of investigations and cleanup
- Responsible for evaluating vapor intrusion risk at sites and facilities



Environmental Justice

- “[E]nvironmental justice” means the fair treatment of people of all races, cultures, and incomes with respect to the development, adoption, implementation, and enforcement of environmental laws, regulations, and policies. (Gov. Code, § 65040.12, subd. (e)).

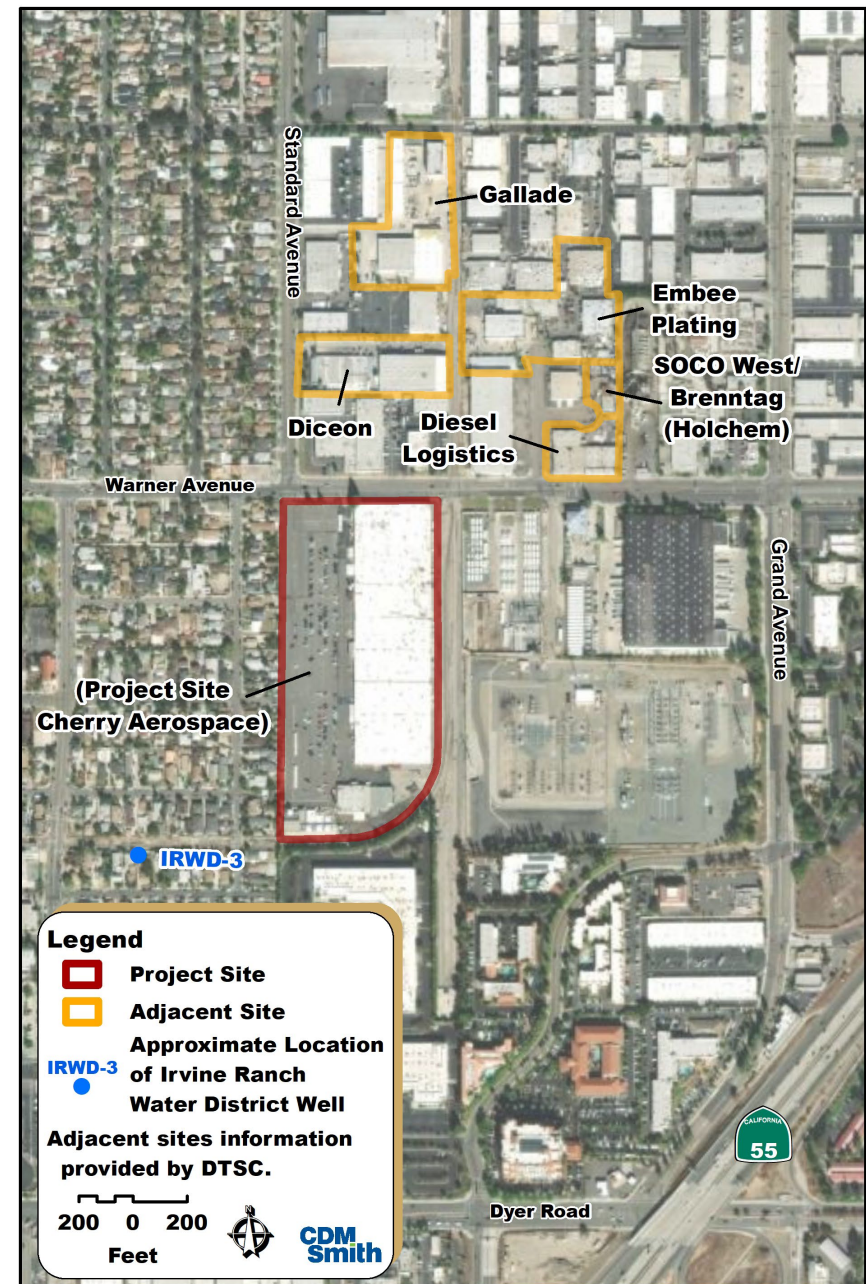


Cherry Aerospace Site and Facility-Background

- Brief history of site and activities
- What initiated DTSC's involvement

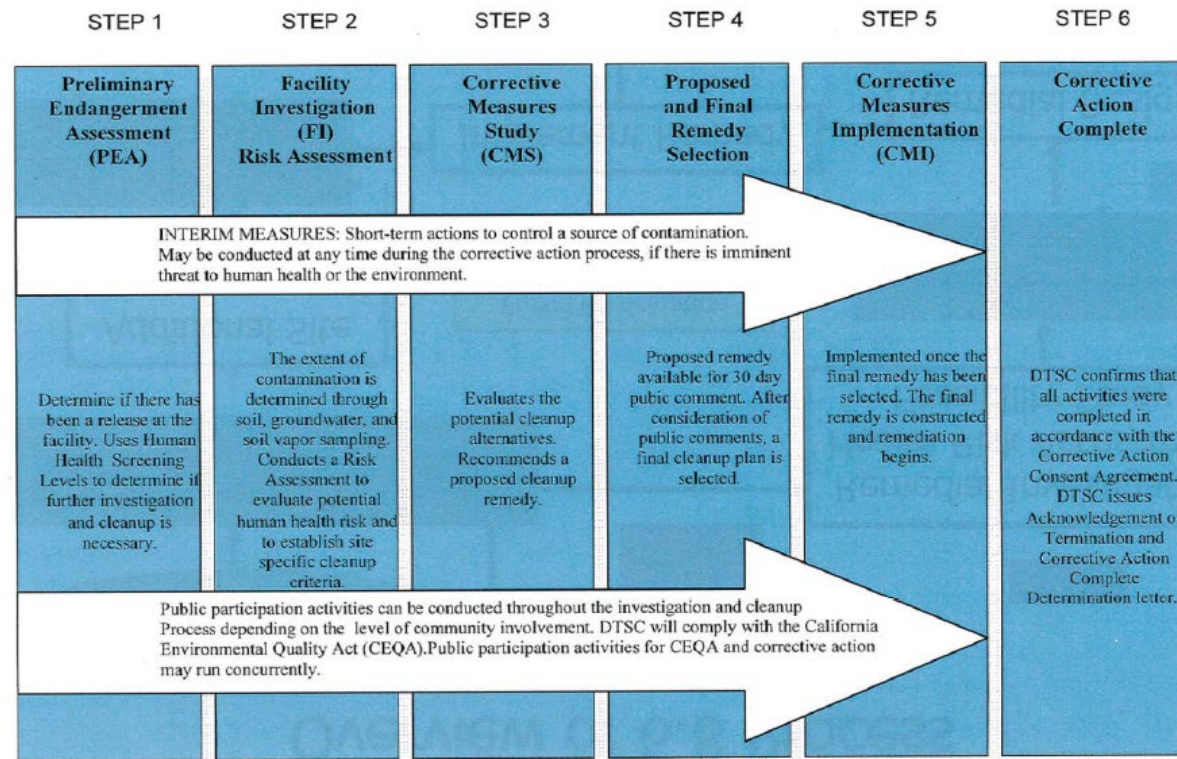


Map of Cherry Aerospace Site and Facility-Background



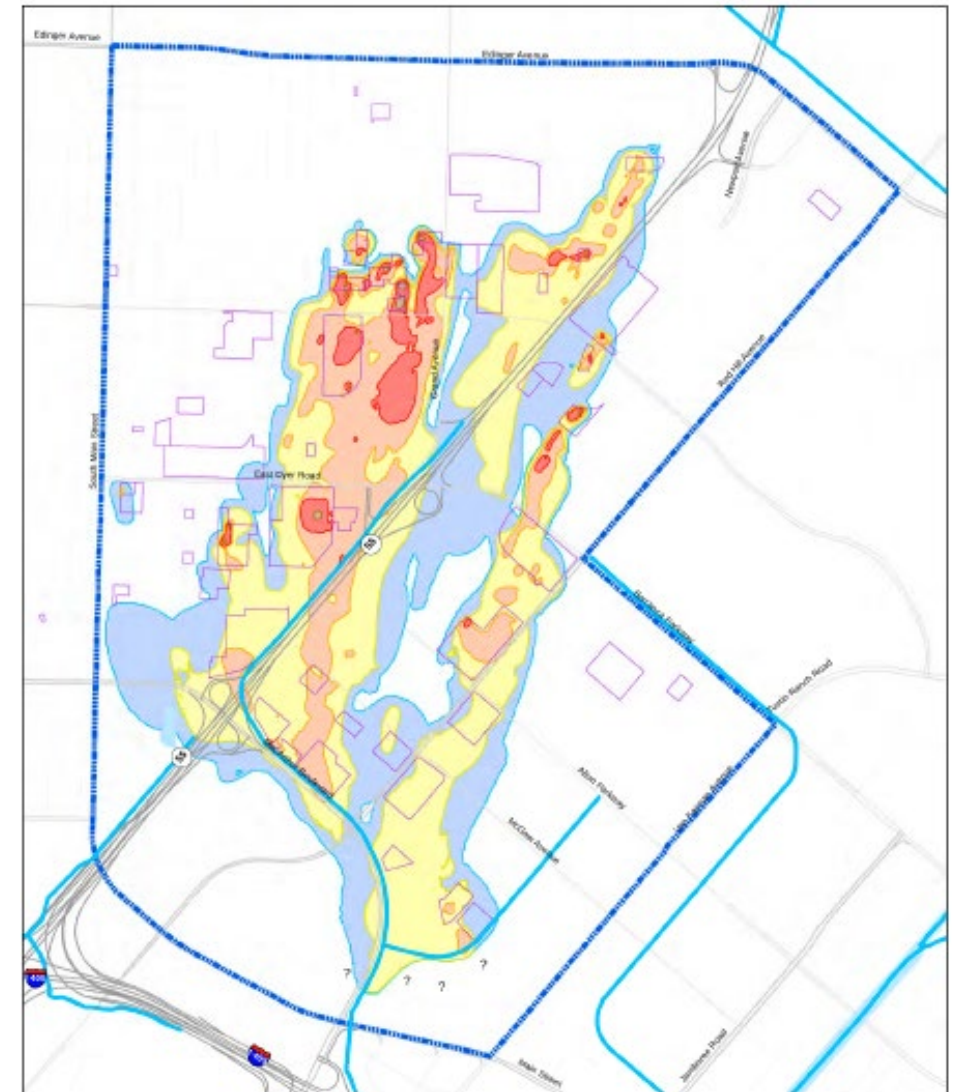
Site mitigation process and current status

Corrective Action Process



Extent of Groundwater Contamination

- South Basin Groundwater Protection Project Operable Unit 2
- Individual cleanups at each source facility
- IRWD-3 no longer used for drinking water



NOTES:

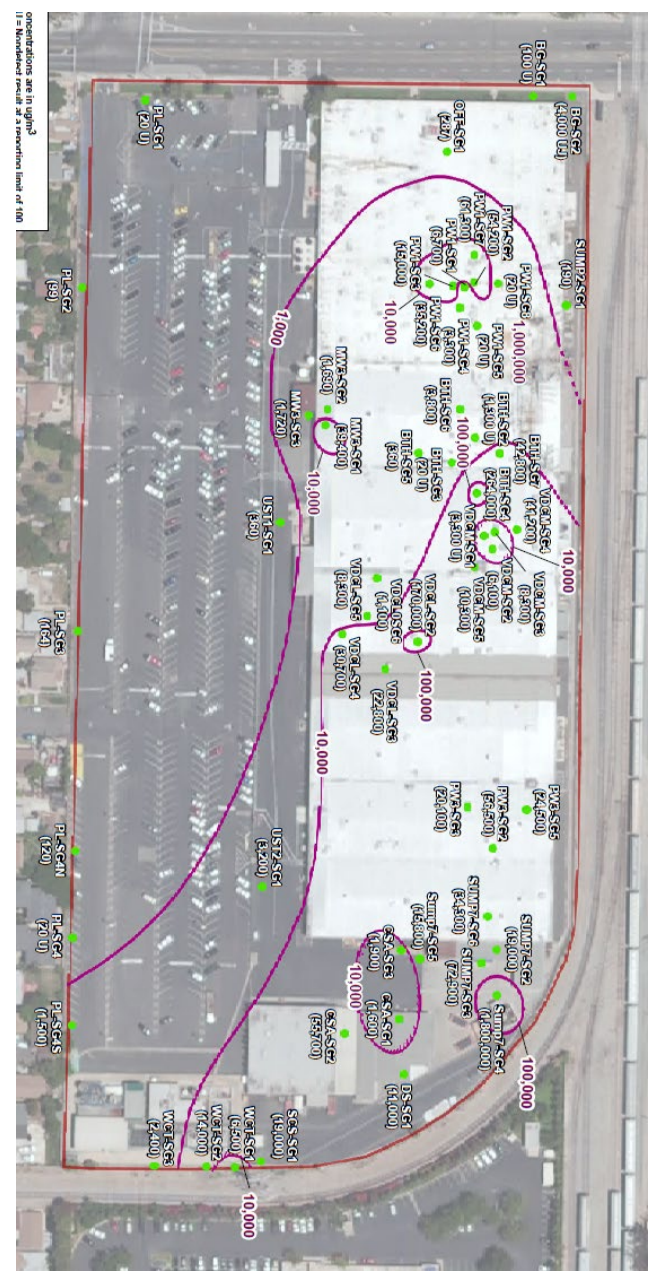
Approximate distribution based on maximum concentration of principal chemicals of potential concern (COPCs) (tetrachloroethylene, trichloroethylene, 1,1-dichloroethylene, perchlorate and 1,4-dioxane, micrograms per liter (ug/l)). See appendix for details.

Water level elevation based on upper shallow aquifer system water level measurements in first half of 2012 (see appendix), feet NAVD83 datum. Q1/Q2 2012 water level contours selected as the data set for this period was more extensive than other data sets.

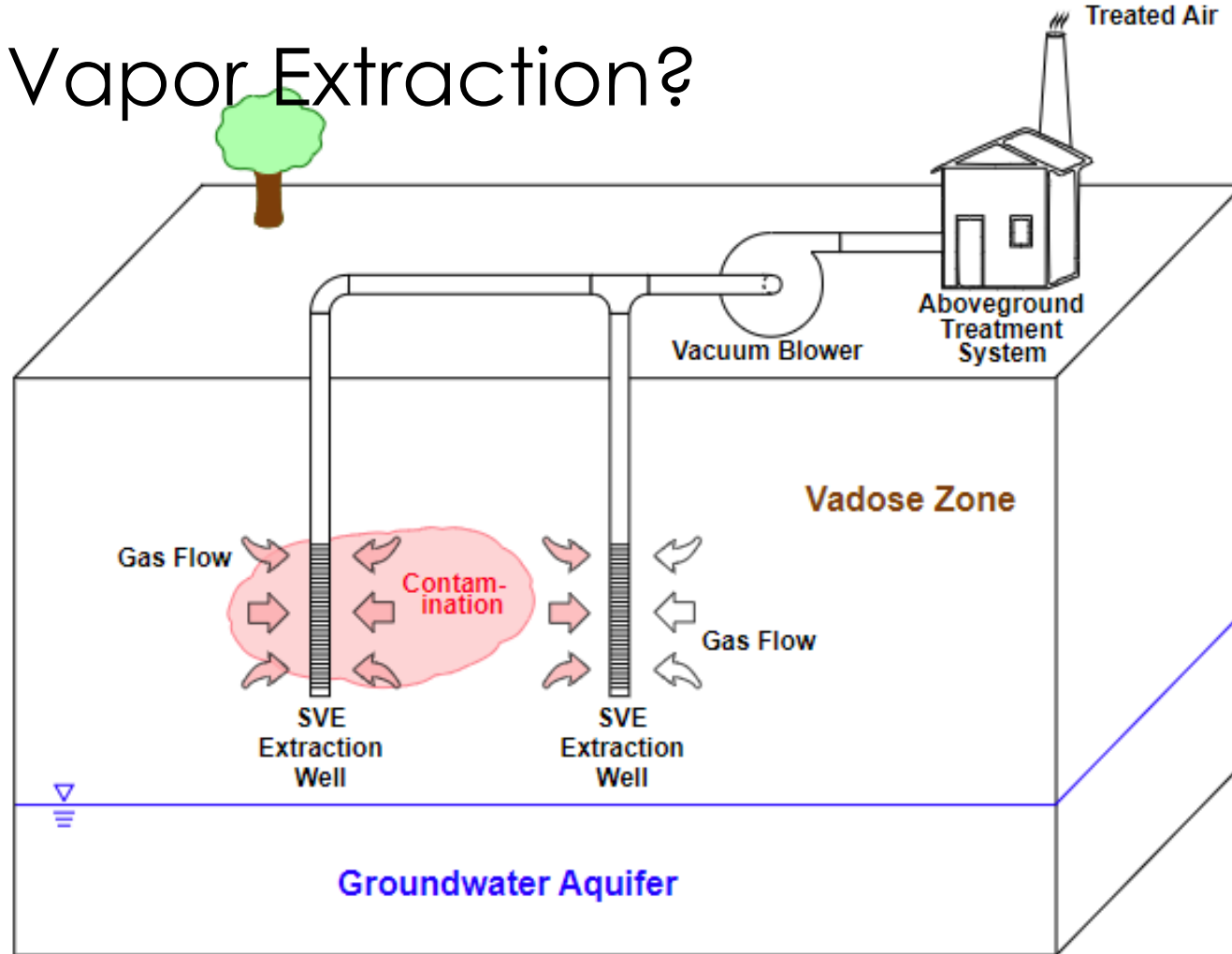


Extent of Soil Vapor Impacts

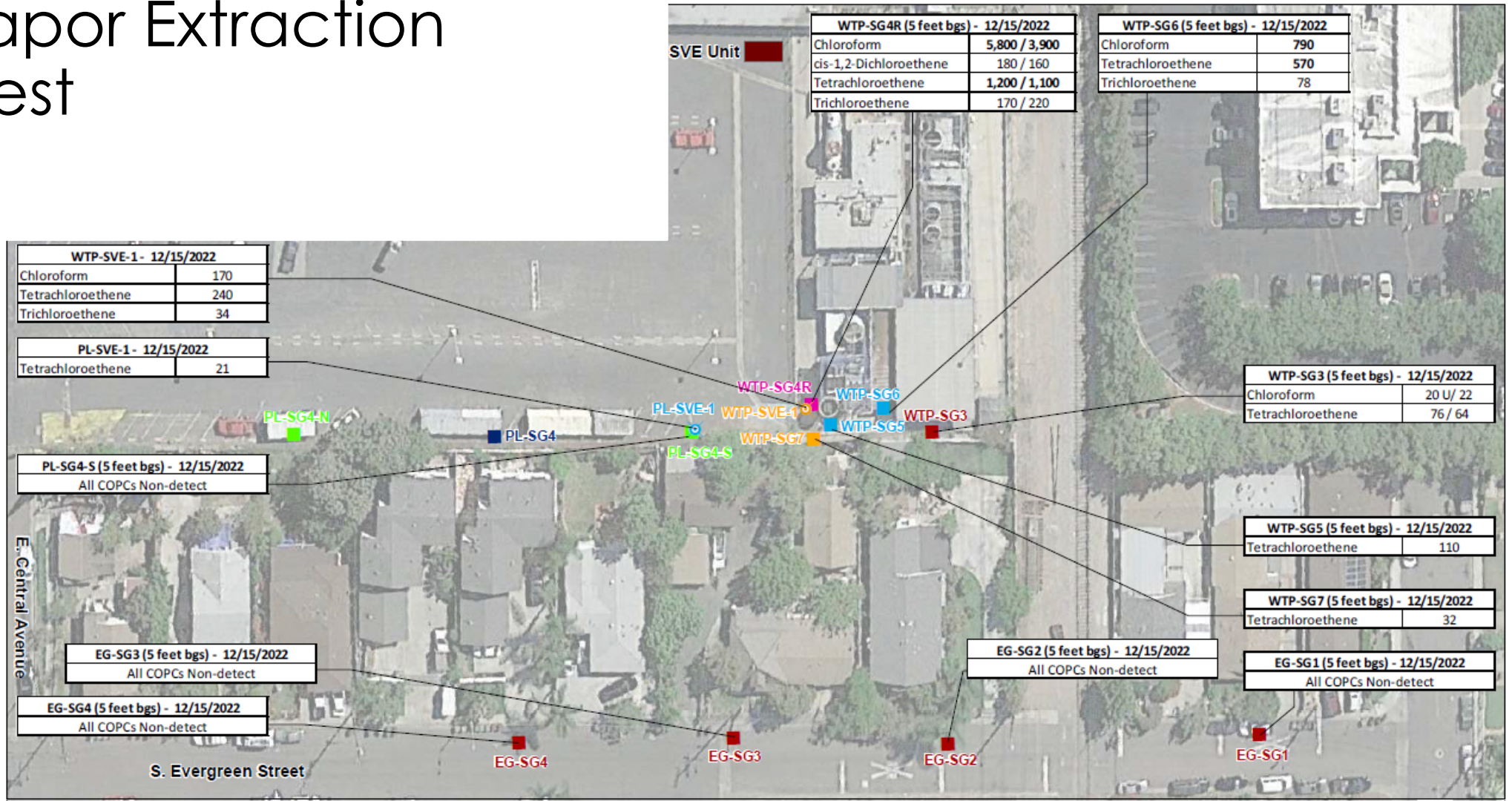
- 2015 Site-wide soil vapor survey
- Results along western boundary compared to residential limits
- Southwest corner exceeded residential limits
- Pilot test



What is Soil Vapor Extraction?



Soil Vapor Extraction Pilot Test



SVE Performance

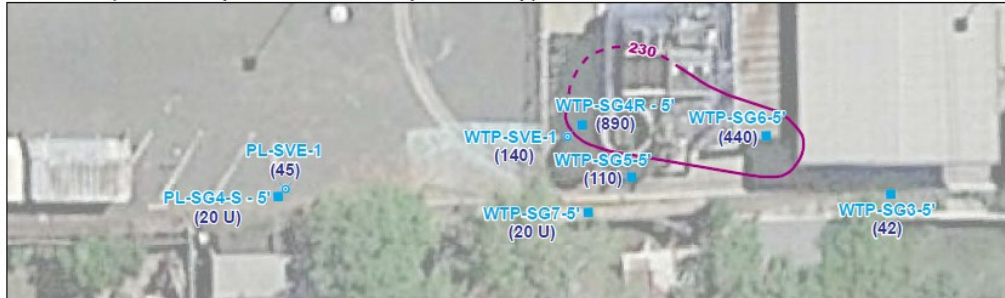
March 2022 (30 months post-SVE extended pilot start-up)



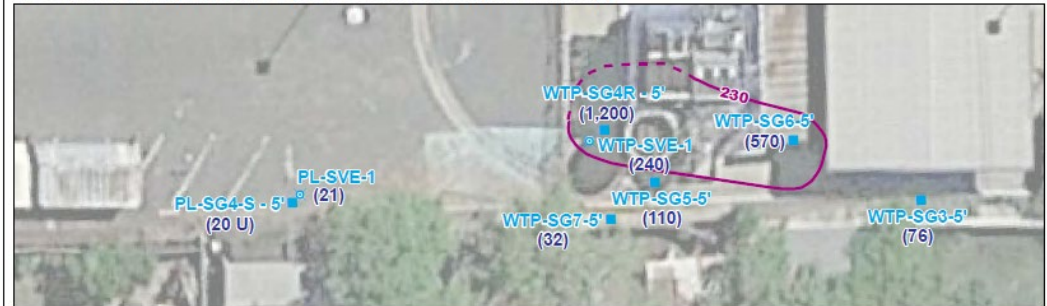
September 2022 (36 months post-SVE extended pilot start-up)



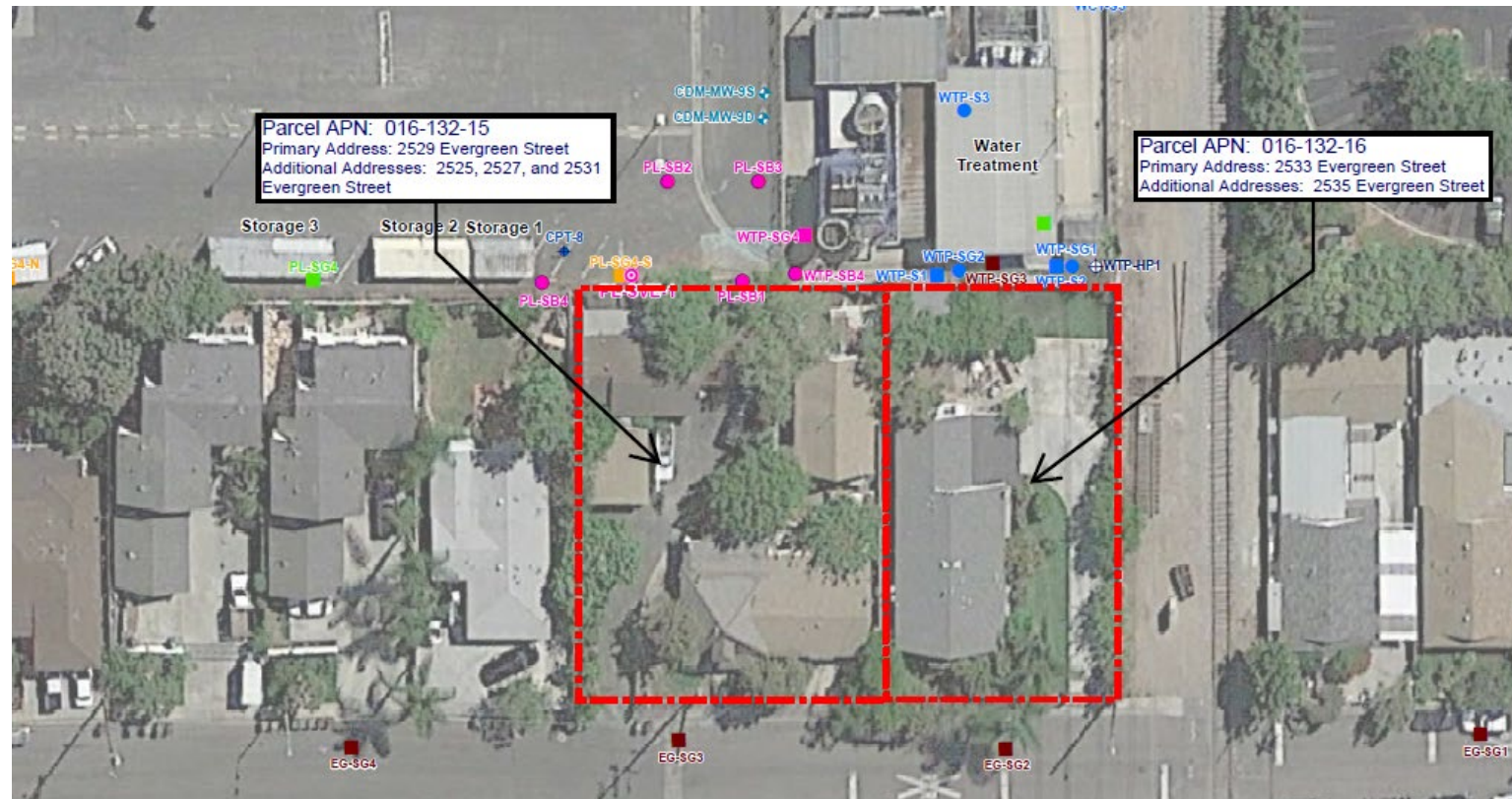
June 2022 (33 months post-SVE extended pilot start-up)



December 2022 (39 months post-SVE extended pilot start-up)



SVE Protectiveness

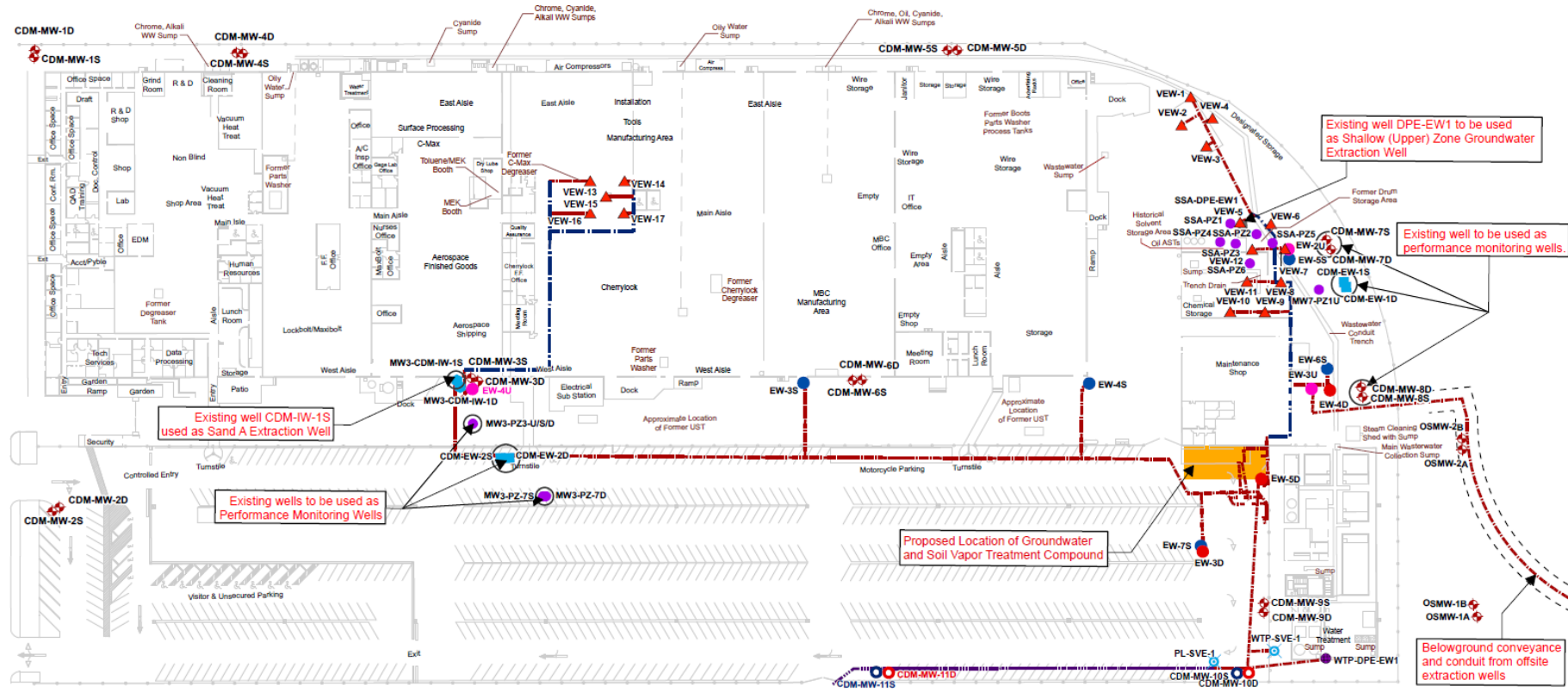


Path Forward

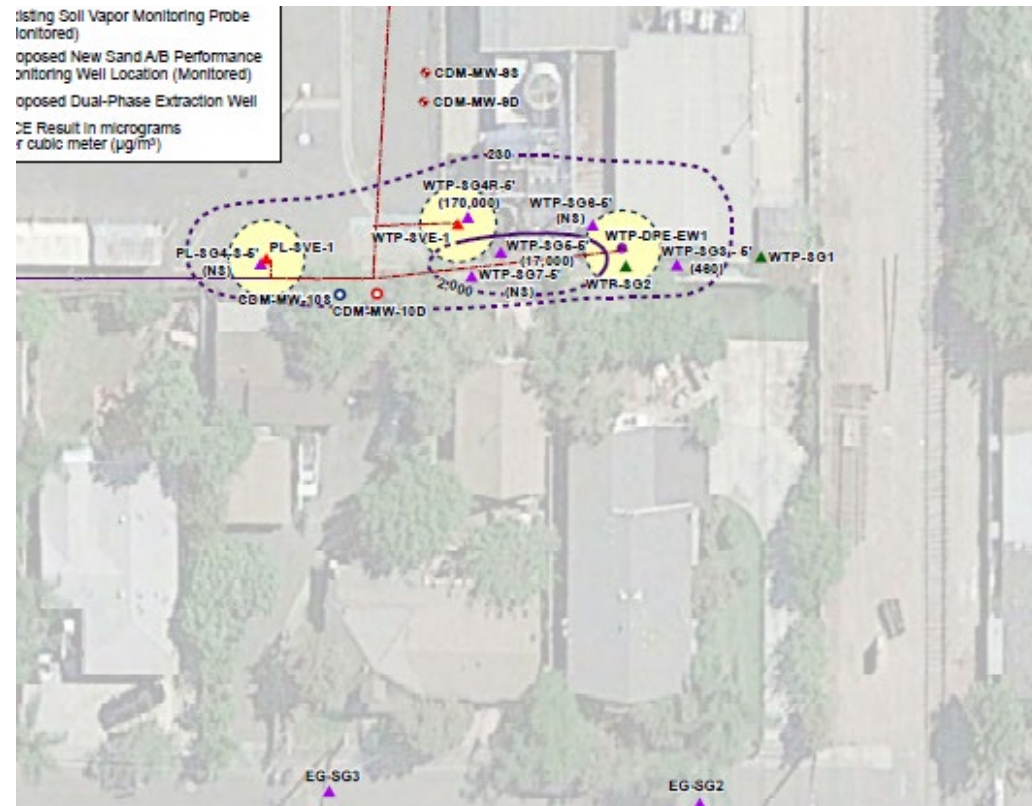
- Implement Interim Measures Workplan approved in 2020
- Includes onsite and offsite work
- Includes extraction of soil vapor and groundwater



Path Forward



Path Forward



Contact information

- Shahir Haddad, P.E. Branch Chief
- Angela Turner P.G. Engineering Geologist/Project Manager
 - Angela.Turner@dtsc.ca.gov (714) 484-5477
- Andres Martinez Ph.D. Environmental Justice and Tribal Affairs Supervisor
 - Andres.Martinez@dtsc.ca.gov (916) 701-3517
- CY Jeng Ph.D. Toxicologist



Questions?

