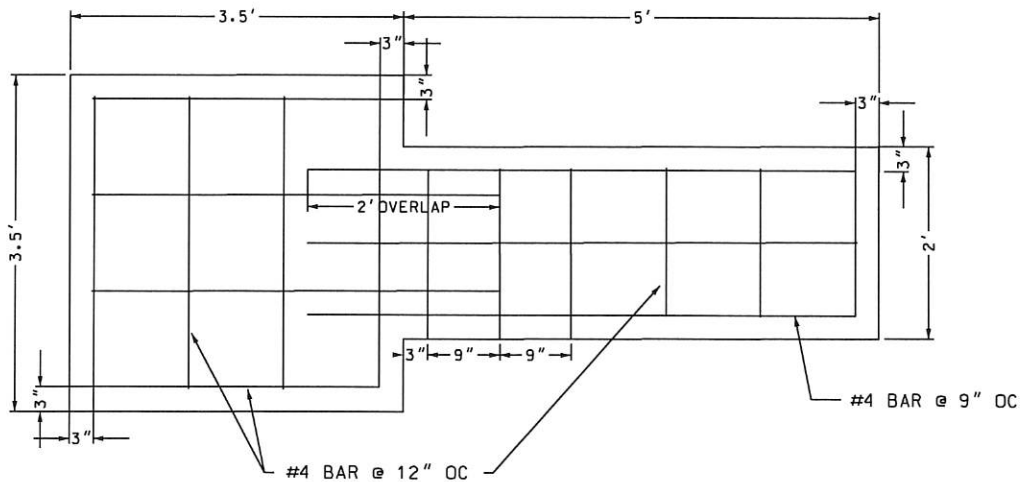


(A) MONUMENT WALL
N.T.S.



(B) MONUMENT PIER/WALL FOOTING
N.T.S.

APPROVED: DATE: 7-13-23

CITY ENGINEER

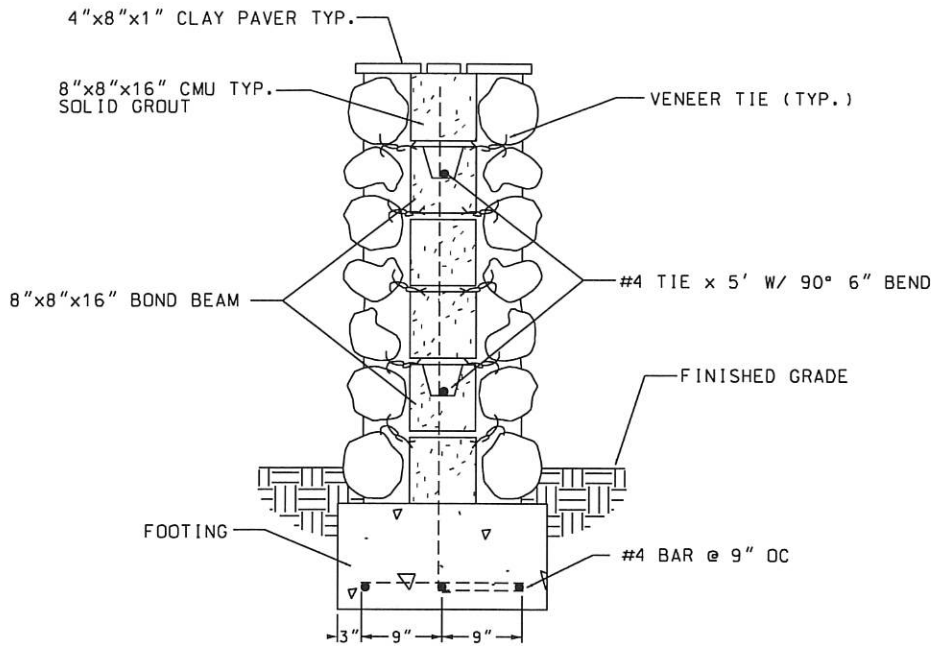
CITY OF SANTA ANA
PUBLIC WORKS AGENCY



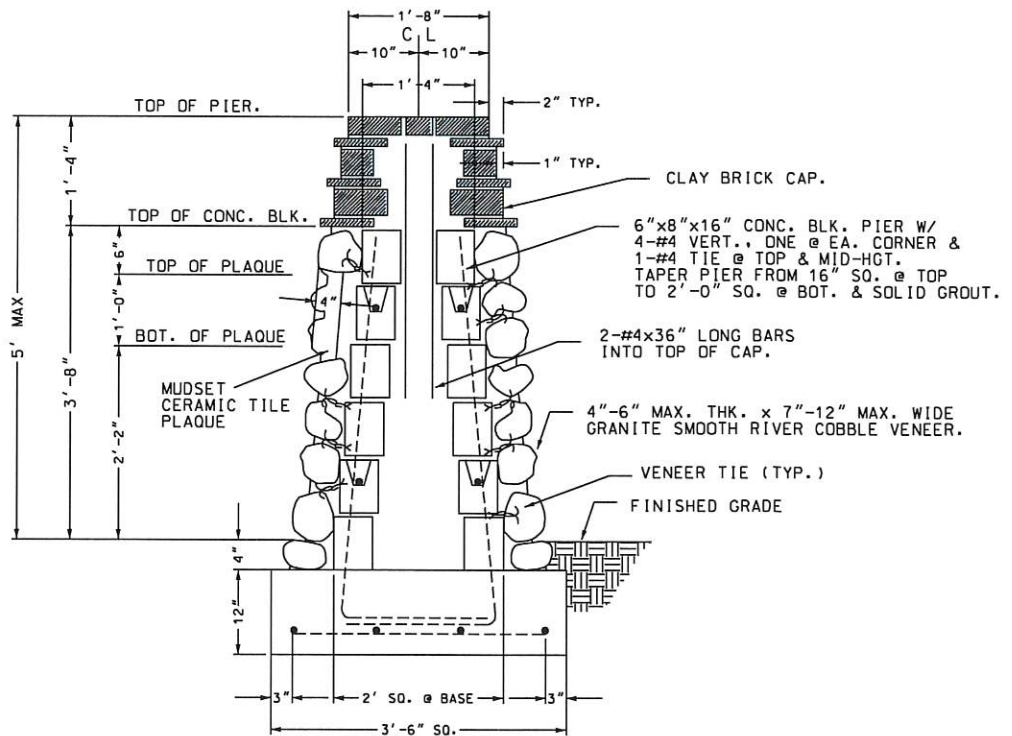
DATE	REVISION

NEIGHBORHOOD
ENTRY MONUMENT

STD. PLAN
NUMBER
1507
SHEET 1 OF 6



C MONUMENT WALL DETAIL
N.T.S.



D MONUMENT PIER SECTION
N.T.S.



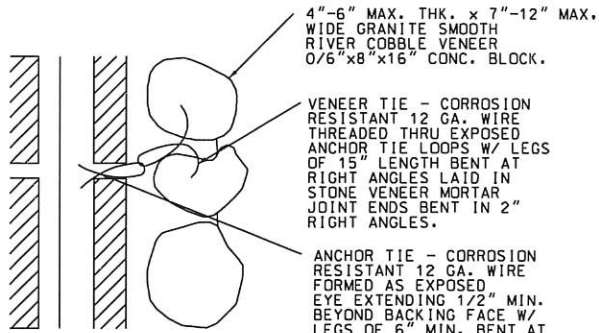
APPROVED: *[Signature]* DATE: 7-13-23
CITY ENGINEER

CITY OF SANTA ANA
PUBLIC WORKS AGENCY

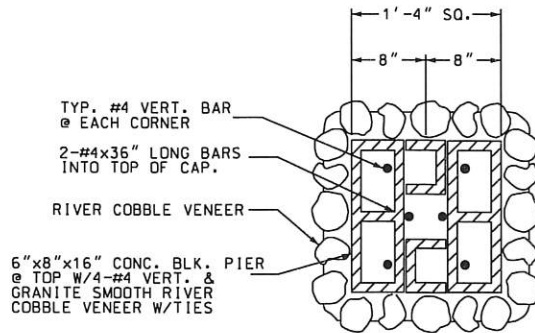
DATE	REVISION

NEIGHBORHOOD
ENTRY MONUMENT

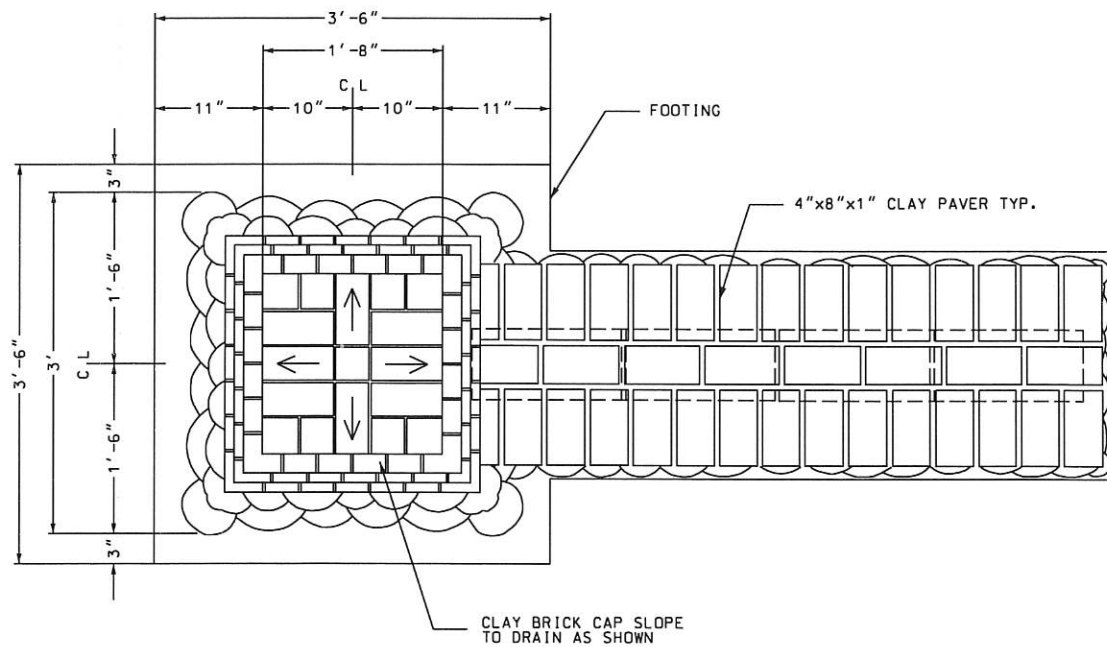
STD. PLAN
NUMBER
1507
SHEET 2 OF 6



(E) VENEER TIE
 N.T.S.



(F) TYP. PIER BLOCK PLAN
 NO SCALE



(G) MONUMENT PIER CAP
 N.T.S.

APPROVED: *[Signature]* DATE: 7-13-23
 CITY ENGINEER

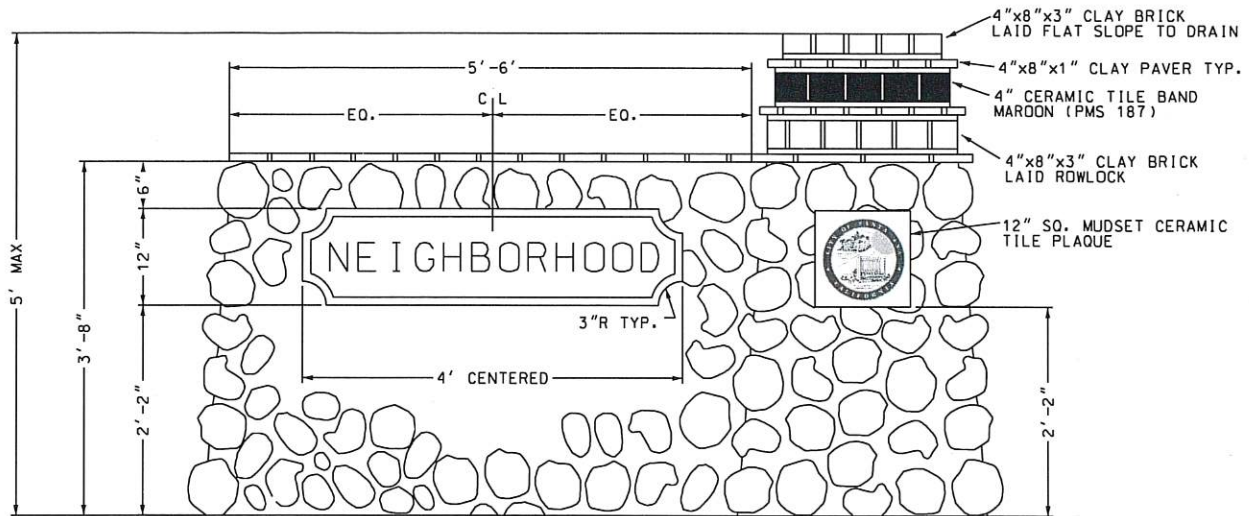
CITY OF SANTA ANA
 PUBLIC WORKS AGENCY



DATE	REVISION

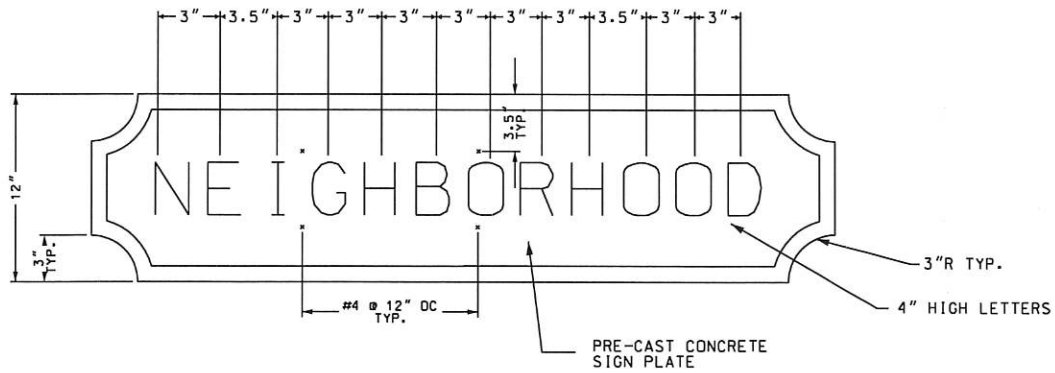
NEIGHBORHOOD
 ENTRY MONUMENT

STD. PLAN
 NUMBER
 1507
 SHEET 3 OF 6



(H) PIER AND WALL ELEVATION

N. T. S.



(I) CONCRETE SIGN PLATE DETAIL

NO SCALE

APPROVED:  DATE: 7-13-23
CITY ENGINEER

• CITY OF SANTA ANA •
PUBLIC WORKS AGENCY



DATE	REVISION

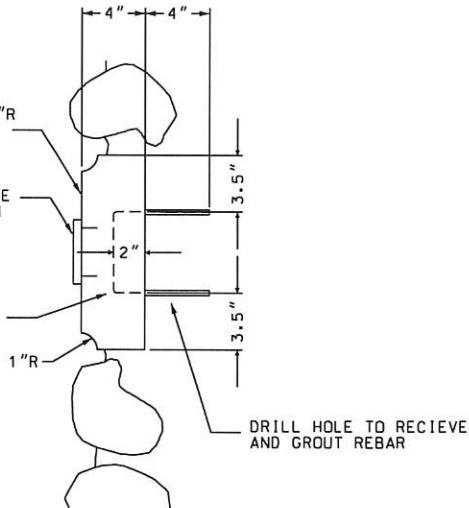
NEIGHBORHOOD
ENTRY MONUMENT

STD. PLAN
NUMBER
1507
SHEET 4 OF 6

LIGHT-WEIGHT CONC. PLATE W/ 1"R EDGES. DRILL & POR-ROK TO SET BRONZE LETTERS ON PLAQUE.

4" HIGH X 1/2" DEEP BRONZE CHanneled LETTERS (CUSTOM FABRICATED).

#4 REBAR SET IN SIGN PLATE AS SHOWN. (SEE X ON DETAIL I FOR HORIZONTAL PLACEMENT.)



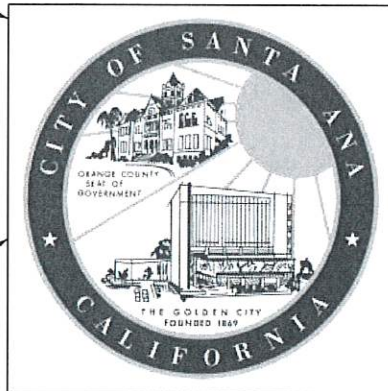
DRILL HOLE TO RECIEVE AND GROUT REBAR

NOTE:

LETTER STYLE IS 'CHIC', OR APPROVED EQUAL. SIGN CONTRACTOR SHALL BE RESPONSIBLE FOR FABRICATION OF BRONZE-LETTER TEMPLATE.

J CONCRETE SIGN PLATE
NO SCALE

WHITE BACKGROUND



SANTA ANA LOGO ON 12"x12" CERAMIC TILE MUDSET TO PIER



K CERAMIC TILE PLAQUE
NO SCALE

NOTE:

THE COLORS TO BE VERIFIED BY ENGINEER PRIOR TO FABRICATION

APPROVED: DATE: 7-13-23

CITY ENGINEER

CITY OF SANTA ANA
PUBLIC WORKS AGENCY



DATE	REVISION

NEIGHBORHOOD
ENTRY MONUMENT

STD. PLAN
NUMBER


1507

SHEET 5 OF 6

NOTES:

1. MASONRY: BRICK AS SPECIFIED ON PLAN CMU AS SPECIFIED ON PLAN
f'm = 1,500 PSI MORTAR TYPE M OR S
2. CONCRETE: f'c = 2,500 PSI
3. STEEL: fy = 40,000 PSI DEFORMED BARS
4. VENEER: GRANITE SMOOTH RIVER COBBLE
5. CONSTRUCTION: CONSTRUCTION SHALL CONFORM TO SECTION 1.00
OF THE SPECIAL PROVISIONS



APPROVED:  DATE: 7-13-23
CITY ENGINEER

• CITY OF SANTA ANA •
PUBLIC WORKS AGENCY

DATE	REVISION

NEIGHBORHOOD
ENTRY MONUMENT

STD. PLAN
NUMBER
1507
SHEET 6 OF 6