



Santa Clara/Santa Cruz Counties Airport/Community Roundtable

Briefing on the Proposed
LOUPE FIVE Instrument Departure Procedure

March 27, 2019

Presentation Overview



- Purpose of this Briefing
- Background on Instrument Departure Procedures
- Overview of the Current LOUPE FOUR Instrument Departure Procedure
- Overview of the Proposed LOUPE FIVE Instrument Departure Procedure
- Differences Between the Two IDPs
- Discuss Next Steps
- Answer Member Questions

Purpose of this Briefing



The purpose of this briefing is to:

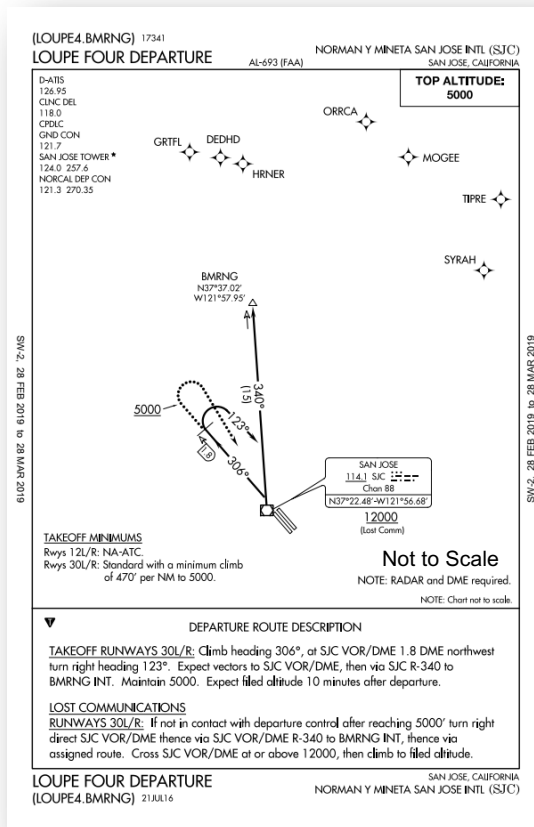
- Bring the proposed LOUPE FIVE Instrument Departure Procedure (IDP) for Norman Y. Mineta San Jose International Airport (SJC) to the attention of the Roundtable members and interested public,
- Identify differences between the existing LOUPE FOUR IDP and the proposed LOUPE FIVE IDP,
- Provide for Roundtable member discussion regarding the proposed IDP and possible next steps, and
- Answer Roundtable member questions

Background on Instrument Departure Procedures



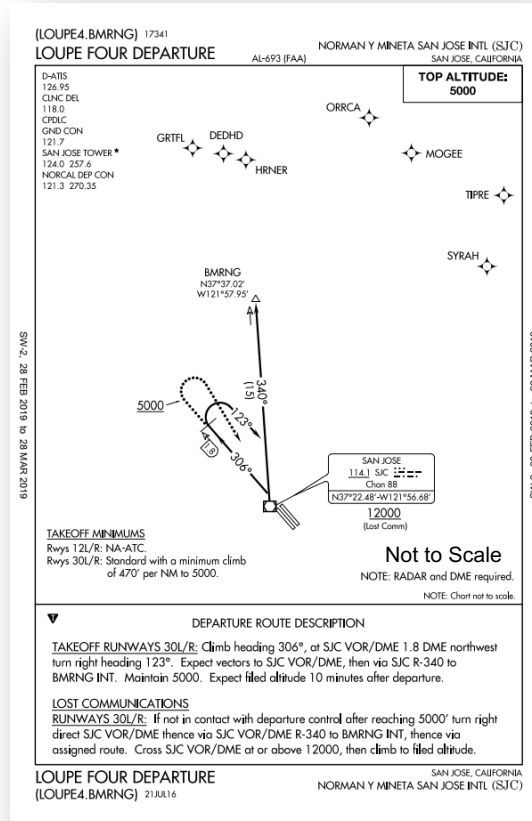
IDPs or Standard Instrument Departures (SIDs):

- Provide predictability and repeatability regarding an aircraft's route of flight,
- Are carried by pilots in paper form or stored in tablets,
- Are stored into the aircraft's Flight Management System (FMS).



SOURCE: FAA.

Background on Instrument Departure Procedures (cont.)



IDPs or Standard Instrument Departures (SIDs):

- Account for terrain, obstructions, airspace, and other procedures,
- Are critical during lost communications because the controller knows where the aircraft is going to be,
- Are updated periodically by the FAA as needed.

SOURCE: FAA.

Background on Instrument Departure Procedures (cont.)



Aeronautical Information Services							
Alerts/Notices							
Catalog of Products							
Digital Products							
Order FAA Products							
Aeronautical Data							
Obstacle Data							
Critical DME List							
Instrument Flight Procedures Information Gateway →							
IFP Request Form							
IFP Announcements & Reports							
PBN Implementation Plan							
IFP Initiation							
IFP Inventory Summary							
Aeronautical Charting Forum							
FAQs							
Chart Discrepancies							

Procedure ▼	Airport Name ▼	Airport ID ▼	City/State ▼	Scheduled Pub Date ▼	Status ▼	Actual Pub Date ▼	
SID SAN JOSE THREE SAN JOSE CA KSJC	NORMAN Y MINETA SAN JOSE INTL	SJC (KSJC)	SAN JOSE, CA	8/15/2019	At Flight Check		Email FAA
SID SUNOL ONE SAN JOSE CA KSJC	NORMAN Y MINETA SAN JOSE INTL	SJC (KSJC)	SAN JOSE, CA	8/15/2019	At Flight Check		Email FAA
STAR ROBIE FIVE SAN JOSE CA KSJC	NORMAN Y MINETA SAN JOSE INTL	SJC (KSJC)	SAN JOSE, CA	8/15/2019	Awaiting Publication (NFDC)		Email FAA
ILS OR LOC RWY 30 L, AMDT 26	NORMAN Y MINETA SAN JOSE INTL	SJC (KSJC)	SAN JOSE, CA	7/16/2020	Pending		Email FAA
RNAV (RNP) Z RWY 30 L, AMDT 3	NORMAN Y MINETA SAN JOSE INTL	SJC (KSJC)	SAN JOSE, CA	7/16/2020	Pending		Email FAA
RNAV (RNP) Z RWY 30 R, AMDT 2	NORMAN Y MINETA SAN JOSE INTL	SJC (KSJC)	SAN JOSE, CA	7/16/2020	Pending		Email FAA
SID LOUPE FIVE SAN JOSE CA KSJC	NORMAN Y MINETA SAN JOSE INTL	SJC (KSJC)	SAN JOSE, CA	4/25/2019	Awaiting Publication (NFDC)		Email FAA

Showing results 1 - 7 of 7

[Export to CSV](#)

SOURCE: FAA.

The FAA's Instrument Flight Procedures Information Gateway identifies upcoming procedure changes with their publication dates:

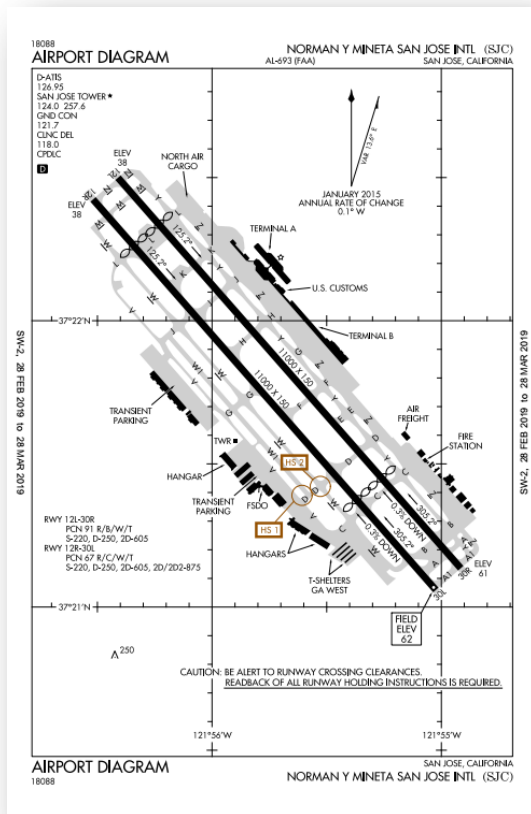
- Find procedures by airport,
- Intended for National Airspace System users,
- Not intended for public input,
- The Roundtable will monitor this site.

Overview of the Existing LOUPE FOUR IDP



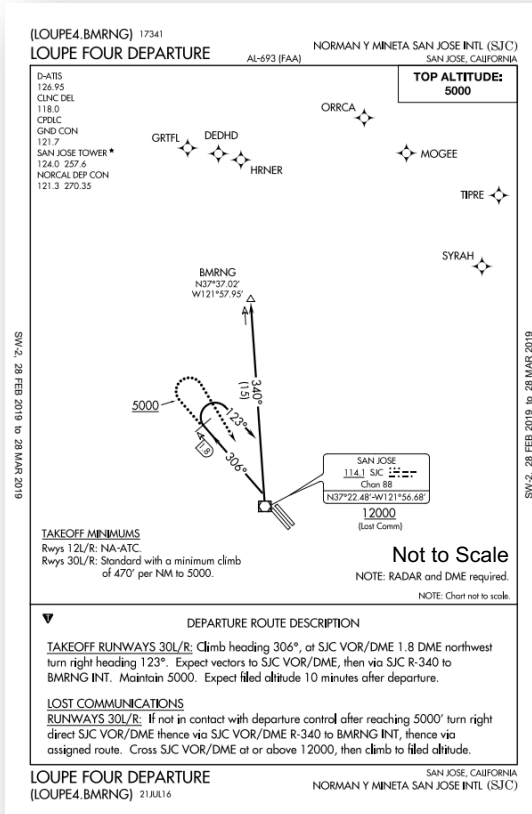
- SJC has seven IDPs covering several departure configurations including three Area Navigation (RNAV) IDPs
- The Federal Aviation Administration (FAA) is proposing to modify the LOUPE FOUR IDP, which is used for northbound departures on Runways 30R and 30L
- The proposed IDP, the LOUPE FIVE, is scheduled to be published by the FAA on April 25, 2019

Overview of the Existing LOUPE FOUR IDP



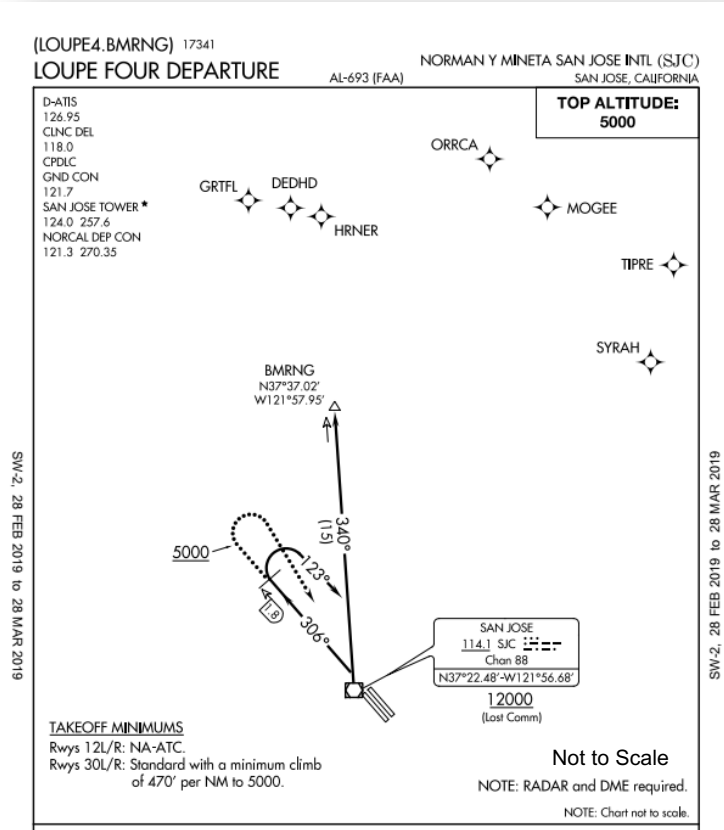
SOURCE: FAA.

Santa Clara/Santa Cruz Counties Airport/Community Roundtable



SOURCE: FAA.

Overview of the Existing LOUPE FOUR IDP



DEPARTURE ROUTE DESCRIPTION

TAKEOFF RUNWAYS 30L/R: Climb heading 306°, at SJC VOR/DME 1.8 DME northwest turn right heading 123°. Expect vectors to SJC VOR/DME, then via SJC R-340 to BMRNG INT. Maintain 5000. Expect filed altitude 10 minutes after departure.

LOST COMMUNICATIONS

RUNWAYS 30L/R: If not in contact with departure control after reaching 5000' turn right direct SJC VOR/DME thence via SJC VOR/DME R-340 to BMRNG INT, thence via assigned route. Cross SJC VOR/DME at or above 12000, then climb to filed altitude.

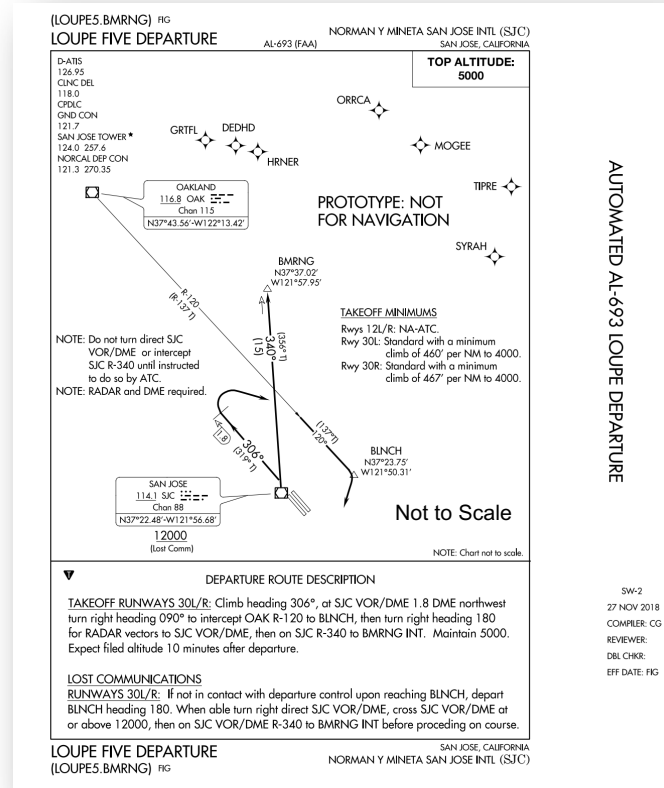
LOUPE FOUR DEPARTURE
(LOUPE4.BMRNG) 21JUL16

SAN JOSE, CALIFORNIA
NORMAN Y MINETA SAN JOSE INTL (SJC)

SOURCE: FAA.

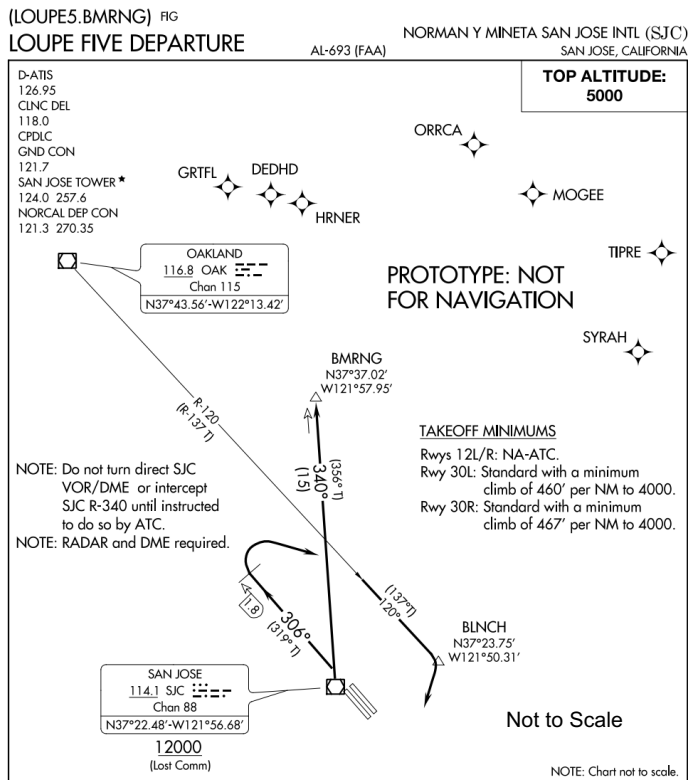
Santa Clara/Santa Cruz Counties Airport/Community Roundtable

Overview of the Proposed LOUPE FIVE IDP



SOURCE: FAA.

Overview of the Existing LOUPE FIVE IDP



DEPARTURE ROUTE DESCRIPTION

TAKEOFF RUNWAYS 30L/R: Climb heading 306°, at SJC VOR/DME 1.8 DME northwest turn right heading 090° to intercept OAK R-120 to BLNCH, then turn right heading 180 for RADAR vectors to SJC VOR/DME, then on SJC R-340 to BMRNG INT. Maintain 5000. Expect filed altitude 10 minutes after departure.

LOST COMMUNICATIONS

RUNWAYS 30L/R: If not in contact with departure control upon reaching BLNCH, depart BLNCH heading 180. When able turn right direct SJC VOR/DME, cross SJC VOR/DME at or above 12000, then on SJC VOR/DME R-340 to BMRNG INT before proceeding on course.

LOUPE FIVE DEPARTURE (LOUPE5.BMRNG) FIG

SAN JOSE, CALIFORNIA
NORMAN Y MINETA SAN JOSE INTL (SJC)

SW-2

27 NOV 2018

COMPILER: CG

REVIEWER:

DBL CHKR:

EFF DATE: FIG

SOURCE: FAA.

Santa Clara/Santa Cruz Counties Airport/Community Roundtable

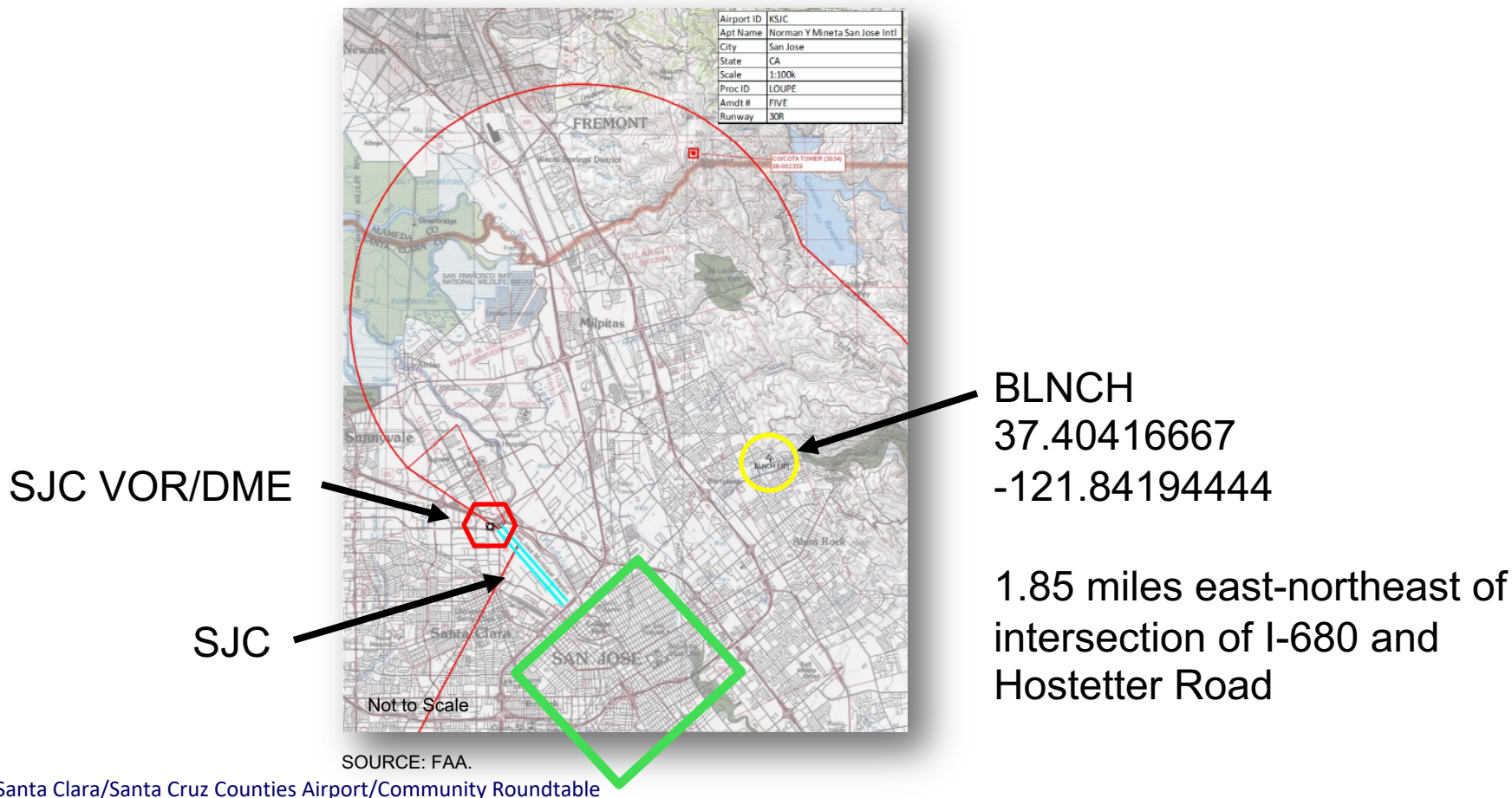
Overview of the Proposed LOUPE FIVE IDP



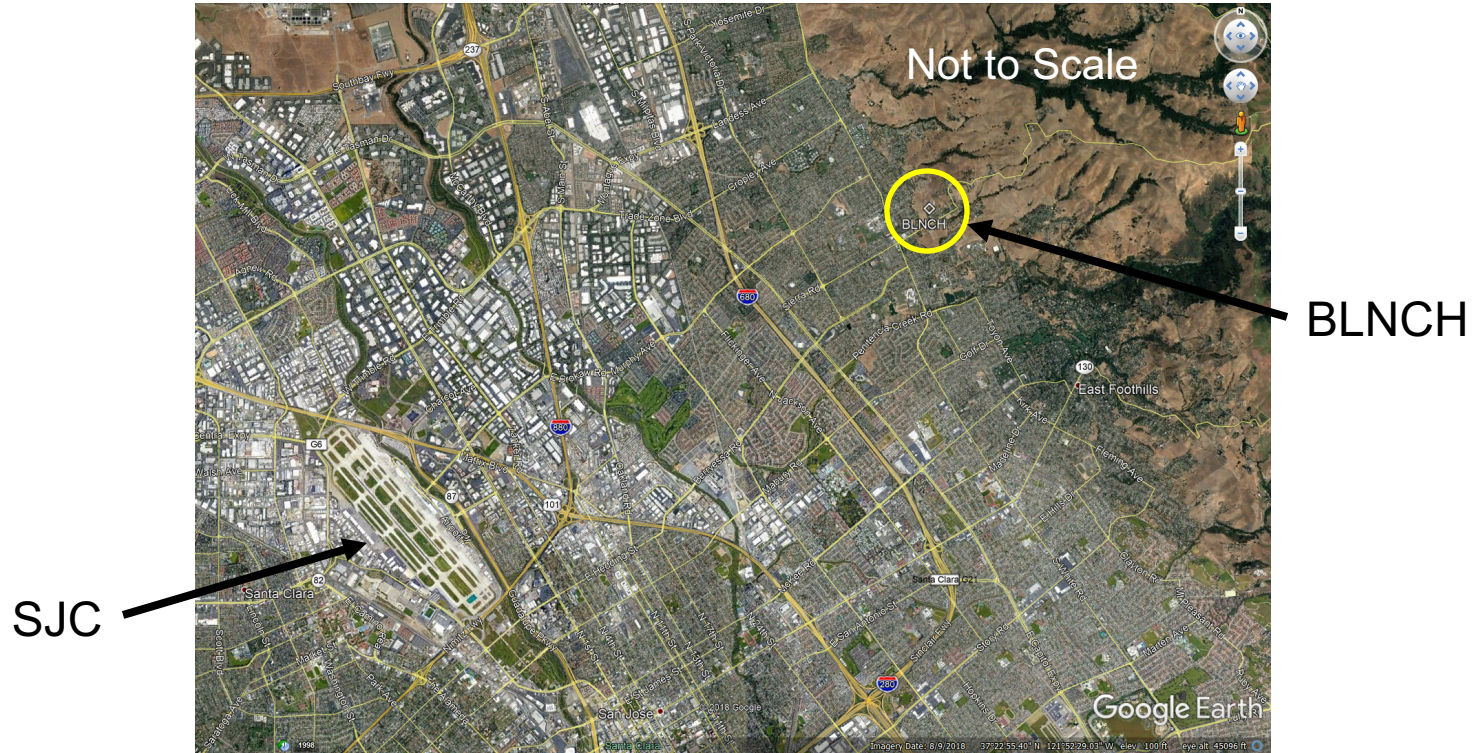
SOURCE: FAA.

Santa Clara/Santa Cruz Counties Airport/Community Roundtable

Overview of the Proposed LOUPE FIVE IDP



Overview of the Proposed LOUPE FIVE IDP



SOURCE: FAA, Google Earth.

Differences Between the LOUPE FOUR and LOUPE FIVE IDPs



LOUPE FOUR IDP:

- Climb heading 306°,
- At SJC VOR/DME 1.8 DME northwest turn right to heading 123°,
- Expect vectors to SJC VOR/DME,
- Then via SJC R340 to BMRNG INT.
- Maintain 5000.
- Expect filed altitude 10 minutes after departure.

LOUPE FIVE IDP:

- Climb heading 306°,
- At SJC VOR/DME 1.8 DME northwest turn right to heading 090° to intercept the OAK R-120 to BLNCH,
- then turn right heading 180 for RADR vectors to SJC VOR/DME,
- Then via SJC R340 to BMRNG INT.
- Maintain 5000.
- Expect filed altitude 10 minutes after departure.

Discuss Next Steps



At a future meeting, it may be beneficial for the Roundtable and members of the public to hear from the FAA regarding:

- Why the LOUPE FOUR IDP is being replaced,
- Why the LOUPE FIVE IDP is an improvement on the LOUPE FOUR IDP,
- What environmental analysis was performed to evaluate the potential impacts of the LOUPE FIVE IDP, and
- Could a copy of the environmental analysis including the noise analysis be provided to the Roundtable for its review?

The Roundtable may want to consider extending an invitation to the FAA to answer these questions and others at the April Roundtable meeting.



Roundtable Member Questions?