

(LOUPE4.BMRNG) 17341

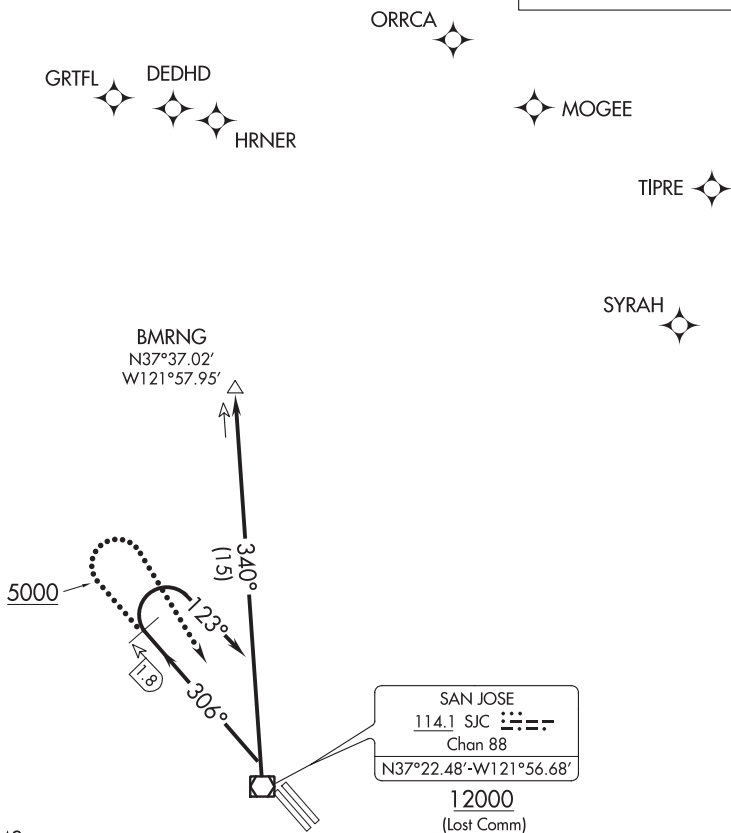
LOUPE FOUR DEPARTURE

AL-693 (FAA)

NORMAN Y MINETA SAN JOSE INTL (SJC)
SAN JOSE, CALIFORNIA

D-ATIS
126.95
CLNC DEL
118.0
CPDLC
GND CON
121.7
SAN JOSE TOWER ★
124.0 257.6
NORCAL DEP CON
121.3 270.35

**TOP ALTITUDE:
5000**



TAKEOFF MINIMUMS

Rwys 12L/R: NA-ATC.

Rwys 30L/R: Standard with a minimum climb of 470' per NM to 5000.

NOTE: RADAR and DME required.

NOTE: Chart not to scale.



DEPARTURE ROUTE DESCRIPTION

TAKEOFF RUNWAYS 30L/R: Climb heading 306°, at SJC VOR/DME 1.8 DME northwest turn right heading 123°. Expect vectors to SJC VOR/DME, then via SJC R-340 to BMRNG INT. Maintain 5000. Expect filed altitude 10 minutes after departure.

LOST COMMUNICATIONS

RUNWAYS 30L/R: If not in contact with departure control after reaching 5000' turn right direct SJC VOR/DME thence via SJC VOR/DME R-340 to BMRNG INT, thence via assigned route. Cross SJC VOR/DME at or above 12000, then climb to filed altitude.

LOUPE FOUR DEPARTURE
(LOUPE4.BMRNG) 21JUL16

SAN JOSE, CALIFORNIA
NORMAN Y MINETA SAN JOSE INTL (SJC)

SW-2, 28 FEB 2019 to 25 APR 2019

SW-2, 28 FEB 2019 to 25 APR 2019

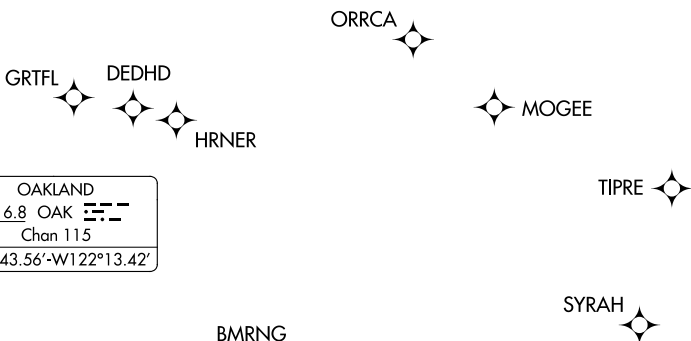
(LOUPE5.BMRNG) 19115
LOUPE FIVE DEPARTURE

NORMAN Y MINETA SAN JOSE INTL (SJC)
 SAN JOSE, CALIFORNIA

AL-693 (FAA)

D-ATIS
 126.95
 CLNC DEL
 118.0
 CPDLC
 GND CON
 121.7
 SAN JOSE TOWER *
 124.0 257.6
 NORCAL DEP CON
 121.3 270.35

**TOP ALTITUDE:
 5000**

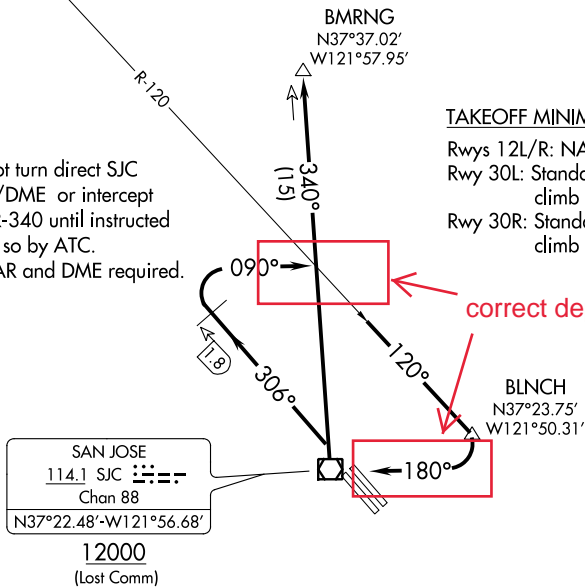


OAKLAND
 116.8 OAK
 Chan 115
 N37°43.56'-W122°13.42'

NOTE: Do not turn direct SJC
 VOR/DME or intercept
 SJC R-340 until instructed
 to do so by ATC.
 NOTE: RADAR and DME required.

TAKEOFF MINIMUMS

Rwys 12L/R: NA-ATC.
 Rwy 30L: Standard with minimum
 climb of 460' per NM to 4000.
 Rwy 30R: Standard with minimum
 climb of 467' per NM to 4000.



SAN JOSE
 114.1 SJC
 Chan 88
 N37°22.48'-W121°56.68'

12000
 (Lost Comm)

NOTE: Chart not to scale.

DEPARTURE ROUTE DESCRIPTION

TAKEOFF RUNWAYS 30L/R: Climb heading 306°, at SJC VOR/DME 1.8 DME northwest turn right heading 090° to intercept OAK R-120 to BLNCH, then turn right heading 180° for RADAR vectors to SJC VOR/DME, then on SJC R-340 to BMRNG INT. Maintain 5000, expect filed altitude 10 minutes after departure.

LOST COMMUNICATIONS

RUNWAYS 30L/R: If not in contact with departure control upon reaching BLNCH, depart BLNCH heading 180°. When able turn right direct SJC VOR/DME, cross SJC VOR/DME at or above 12000, then on SJC R-340 to BMRNG INT before proceeding on course.

LOUPE FIVE DEPARTURE
 (LOUPE5.BMRNG) 25APR19

SAN JOSE, CALIFORNIA
 NORMAN Y MINETA SAN JOSE INTL (SJC)

SW-2, 25 APR 2019 to 23 MAY 2019

SW-2, 25 APR 2019 to 23 MAY 2019

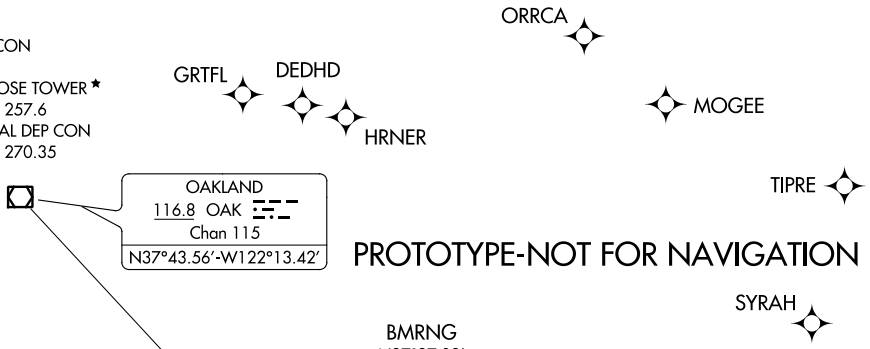
(LOUPE5.BMRNG) 19115
LOUPE FIVE DEPARTURE

AL-693 (FAA)

NORMAN Y MINETA SAN JOSE INTL (SJC)
 SAN JOSE, CALIFORNIA

D-ATIS
 126.95
 CLNC DEL
 118.0
 CPDLC
 GND CON
 121.7
 SAN JOSE TOWER ★
 124.0 257.6
 NORCAL DEP CON
 121.3 270.35

**TOP ALTITUDE:
 5000**

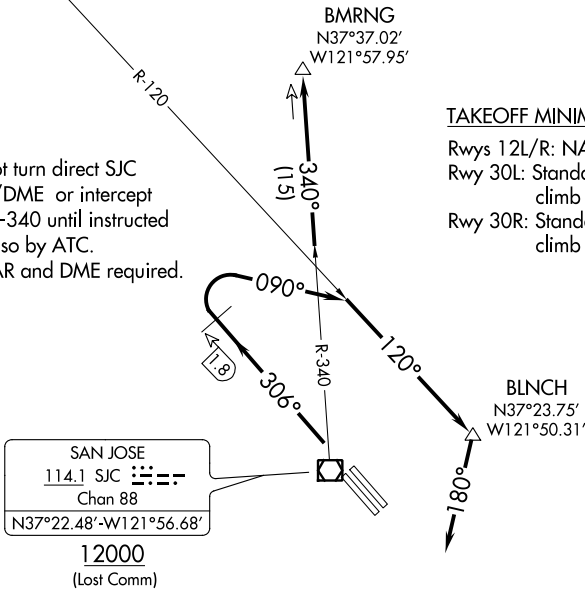


PROTOTYPE-NOT FOR NAVIGATION

NOTE: Do not turn direct SJC
 VOR/DME or intercept
 SJC R-340 until instructed
 to do so by ATC.
 NOTE: RADAR and DME required.

TAKEOFF MINIMUMS

Rwys 12L/R: NA-ATC.
 Rwy 30L: Standard with minimum
 climb of 460' per NM to 4000.
 Rwy 30R: Standard with minimum
 climb of 467' per NM to 4000.



NOTE: Chart not to scale.



DEPARTURE ROUTE DESCRIPTION

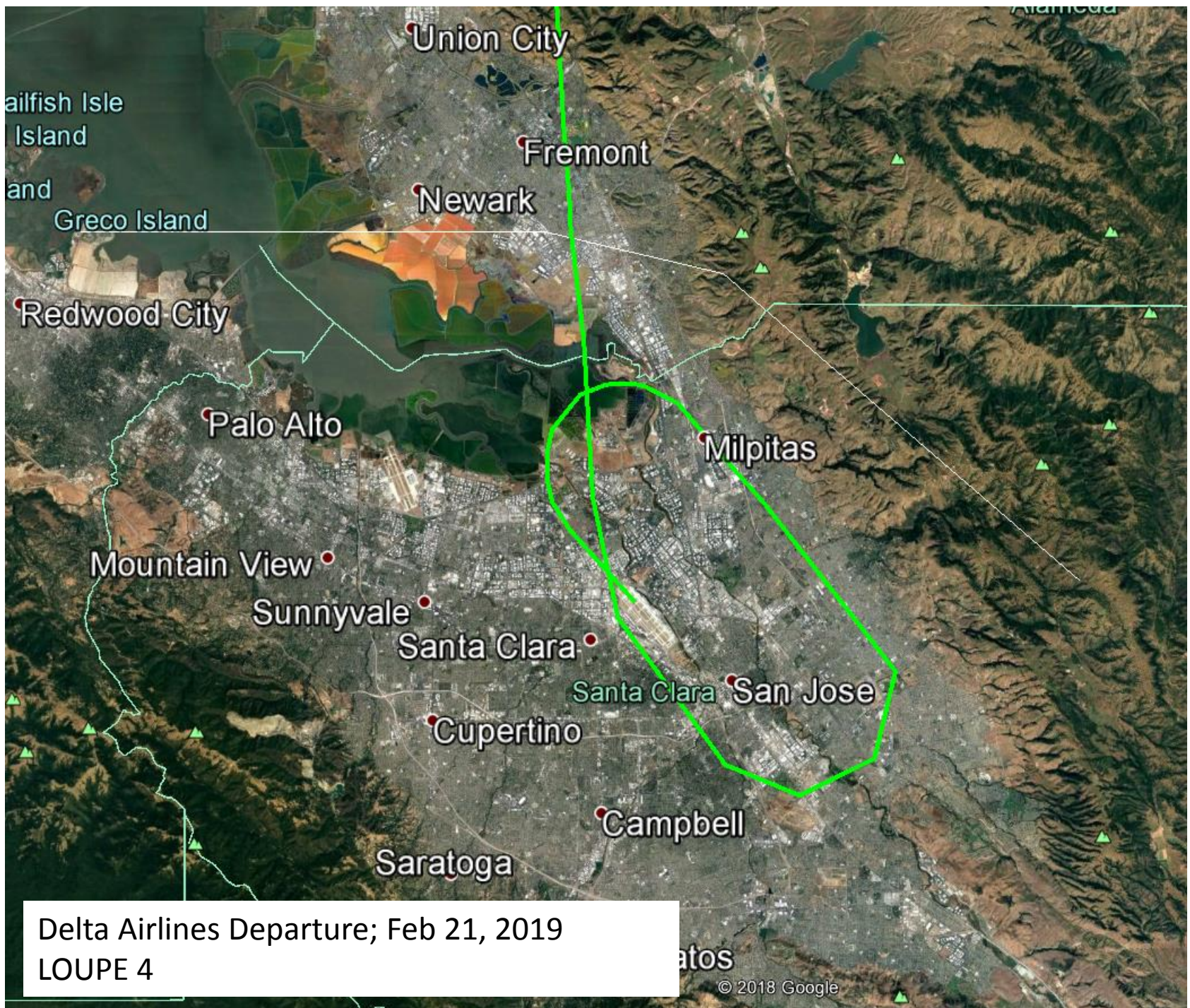
TAKEOFF RUNWAYS 30L/R: Climb heading 306°, at SJC VOR/DME 1.8 DME northwest turn right heading 090° to intercept OAK R-120 to BLNCH, then turn right heading 180° for RADAR vectors to SJC VOR/DME, then on SJC R-340 to BMRNG INT. Maintain 5000, expect filed altitude 10 minutes after departure.

LOST COMMUNICATIONS

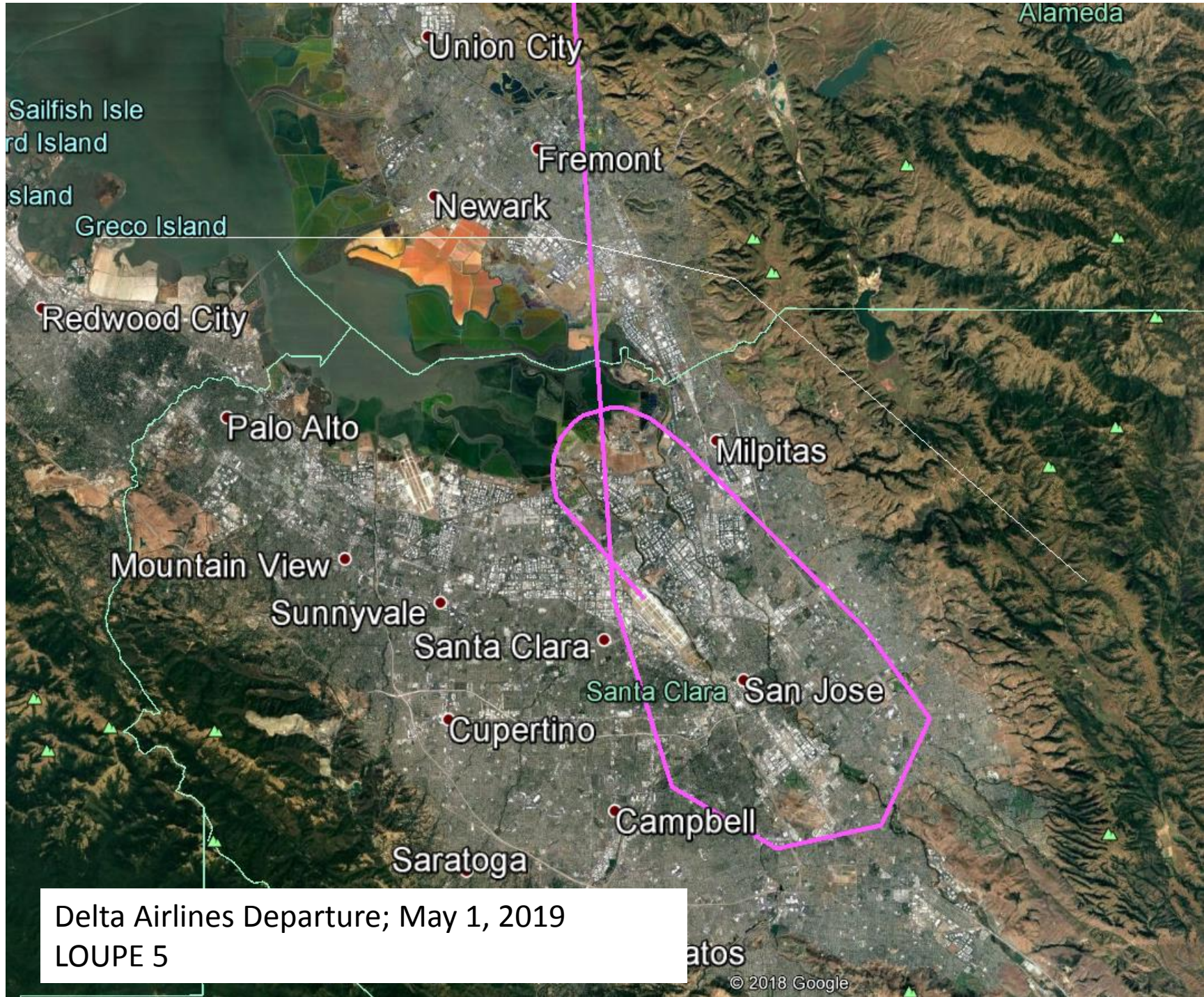
RUNWAYS 30L/R: If not in contact with departure control upon reaching BLNCH, depart BLNCH heading 180°. When able turn right direct SJC VOR/DME, cross SJC VOR/DME at or above 12000, then on SJC R-340 to BMRNG INT before proceeding on course.

LOUPE FIVE DEPARTURE
 (LOUPE5.BMRNG) 25APR19

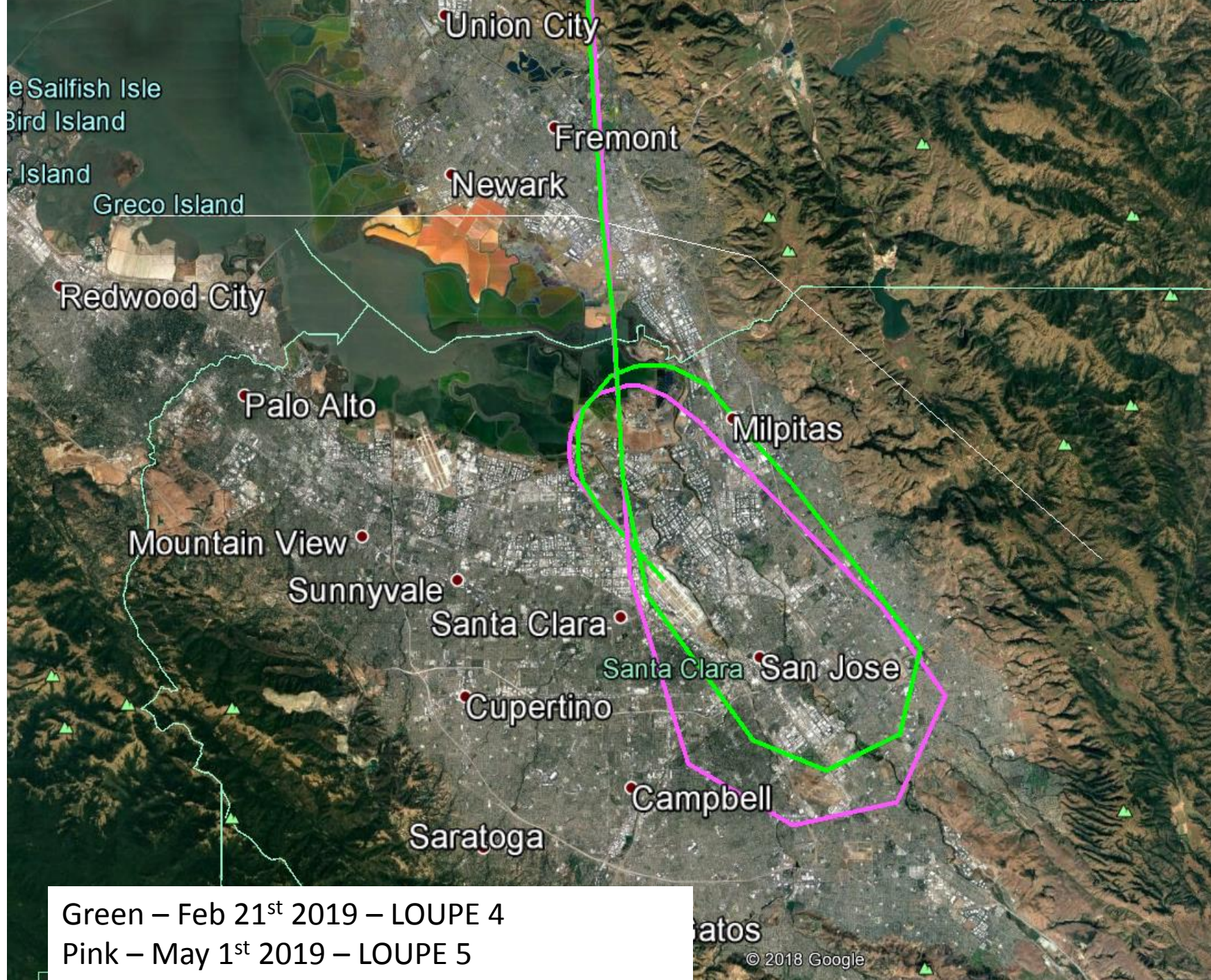
SAN JOSE, CALIFORNIA
 NORMAN Y MINETA SAN JOSE INTL (SJC)



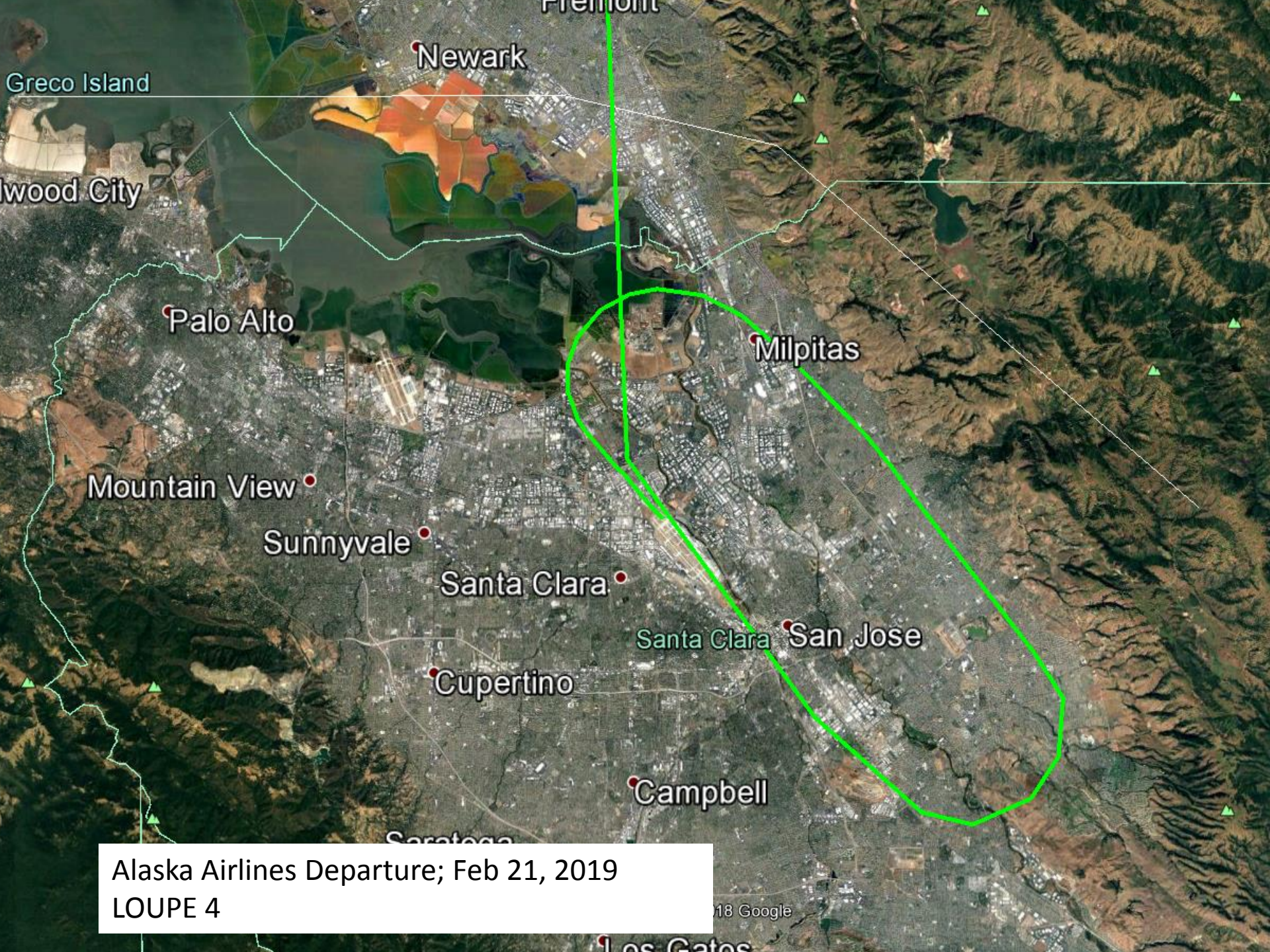
Delta Airlines Departure; Feb 21, 2019
LOUPE 4



Delta Airlines Departure; May 1, 2019
LOUPE 5



Green – Feb 21st 2019 – LOUPE 4
Pink – May 1st 2019 – LOUPE 5



Newark

Fremont

Greco Island

Wood City

Palo Alto

Milpitas

Mountain View

Sunnyvale

Santa Clara

Santa Clara San Jose

Cupertino

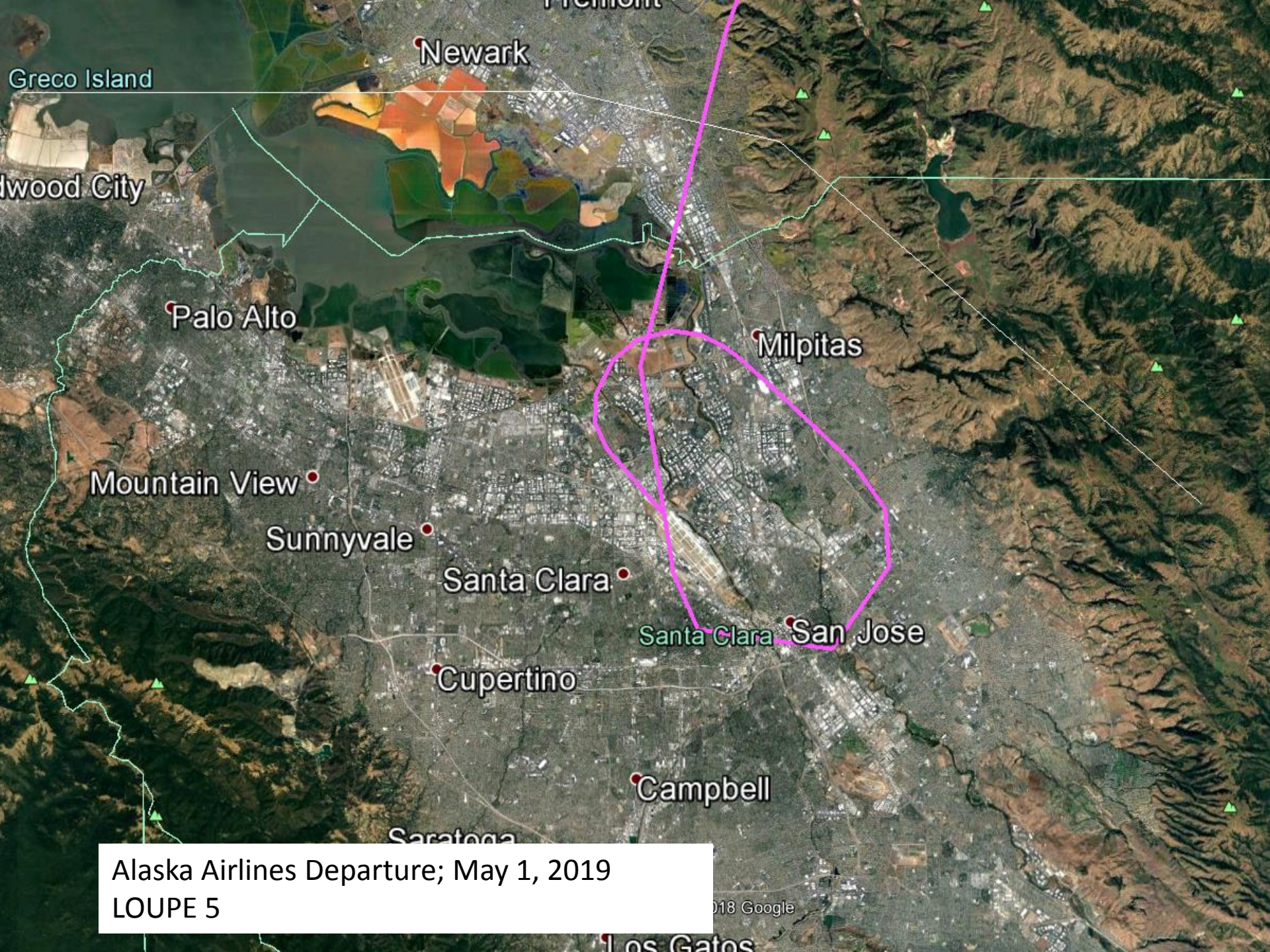
Campbell

Saratoga

Los Gatos

Alaska Airlines Departure; Feb 21, 2019
LOUPE 4

18 Google



Newark

Greco Island

Wood City

Palo Alto

Milpitas

Mountain View

Sunnyvale

Santa Clara

Santa Clara San Jose

Cupertino

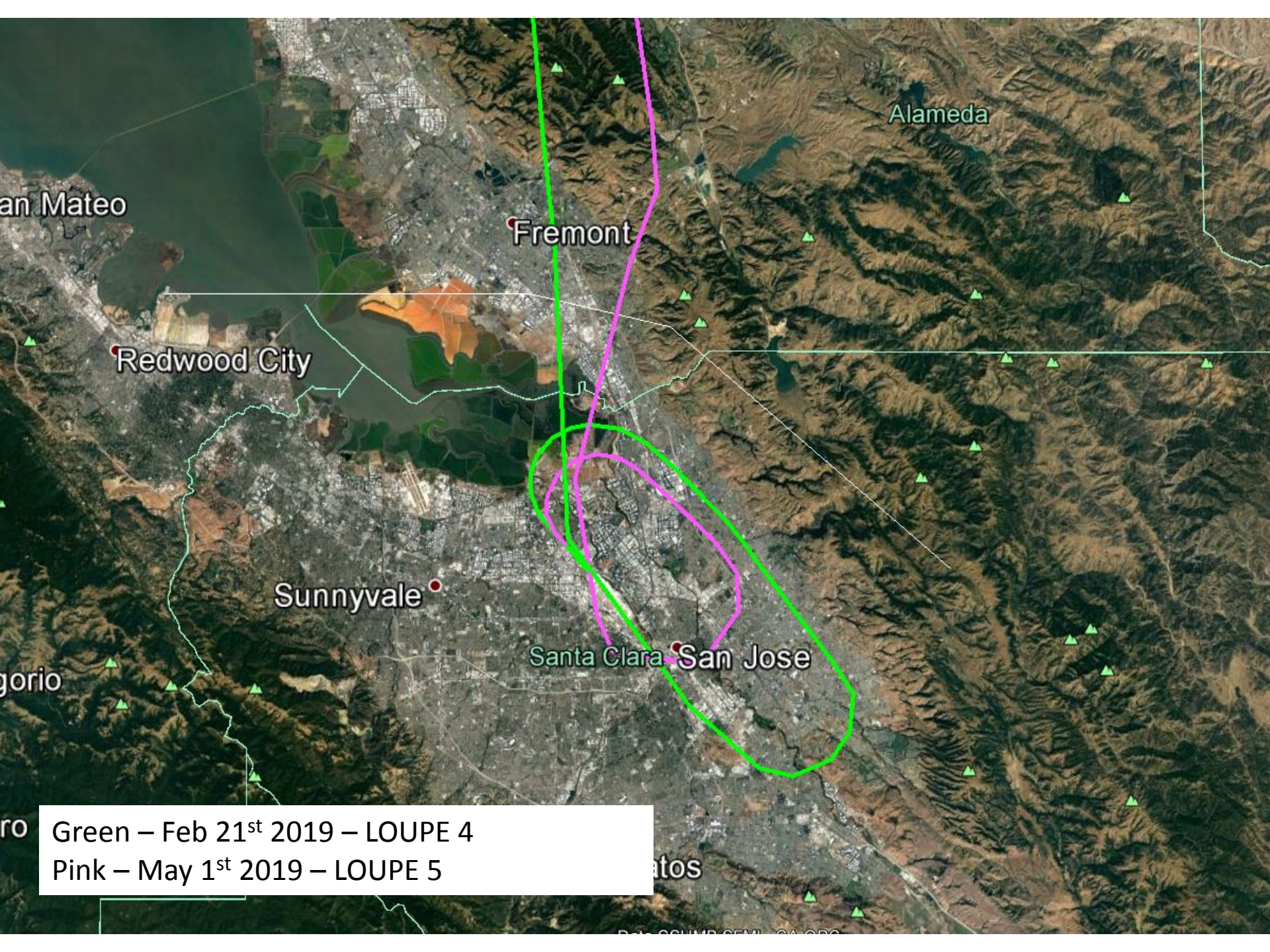
Campbell

Saratoga

Los Gatos

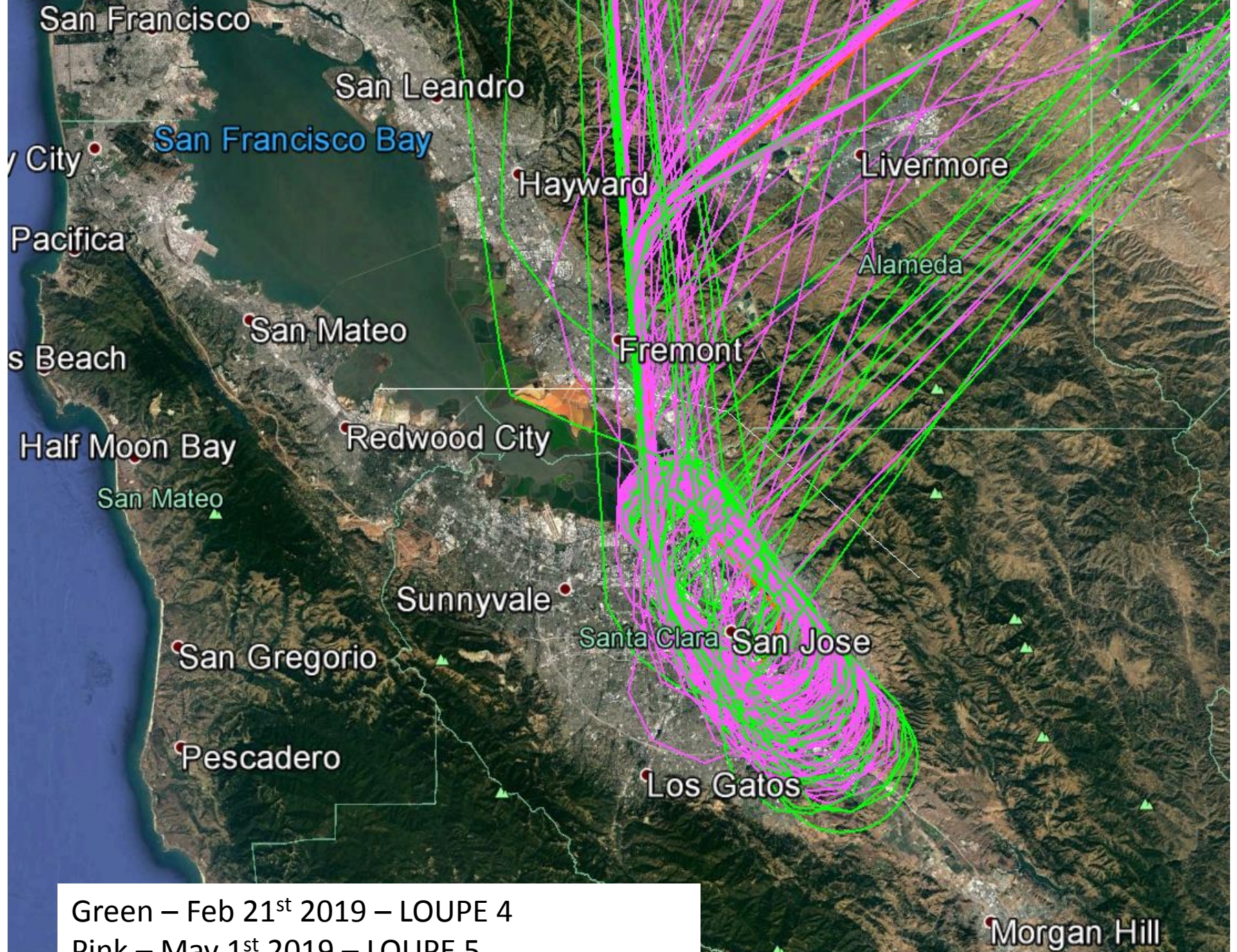
Alaska Airlines Departure; May 1, 2019
LOUPE 5

© 2018 Google



Green - Feb 21st 2019 - LOUPE 4

Pink - May 1st 2019 - LOUPE 5



Green – Feb 21st 2019 – LOUPE 4
Pink – May 1st 2019 – LOUPE 5