



County of Santa Cruz

COUNTY ADMINISTRATIVE OFFICE

701 OCEAN STREET, SUITE 520, SANTA CRUZ, CA 95060-4073
(831) 454-2100 FAX: (831) 454-3420 TDD/TTY: call 711
CARLOS J. PALACIOS, COUNTY ADMINISTRATIVE OFFICER

January 8, 2020

Members, Santa Cruz/Santa Clara Counties Airport/Community Roundtable
P.O. Box 3144
Los Altos, California 94024

Dear Members of the Roundtable,

Santa Cruz County requests that the following FAA routes and issues be included in the Roundtable's Work Plan which is currently under development. These routes are generally departures from SFO or OAK which ascend over Santa Cruz mountain communities that are already impacted by SERFR and BRIXX. In some cases, the FAA has reduced flight altitudes on these routes by moving certain waypoints onshore instead of giving planes more ascent time over the ocean before crossing over land. We have received numerous noise complaints from county residents about these routes since the 2015 implementation of NextGen.

1. WESLA FOUR departure to the CISKO and EBAYE transitions – uses the PORTE waypoint and then ascends over the Santa Cruz Mountains creating noise on the ground.
2. SSTIK FOUR departure to CISKO and EBAYE transitions – also uses PORTE waypoint and then ascends over the Santa Cruz Mountains creating noise on the ground.
3. CNDEL FOUR departure out of Oakland, also uses the same flight paths as WESLA and SSTIK after PORTE Waypoint.

Community members have suggested that these flights could be directed to the existing YYUNG Transition which uses the FFOIL Waypoint over water, thereby keeping the noisier initial ascent to over the ocean rather than over land. We request that this and other solutions be included for investigation in the Roundtable Work Plan.

Thank you,

Carlos J. Palacios
County Administrative Officer

Attachments:

WESLA FOUR DEPARTURE Chart
SSTIK FOUR DEPARTURE Chart
CNDEL FOUR DEPARTURE Chart
Area map showing selected routes and waypoints

WESLA FOUR DEPARTURE (RNAV)

AL-375 (FAA)

SAN FRANCISCO INTL (SFO)
SAN FRANCISCO, CALIFORNIA

D-ATIS
113.7 115.8 118.85
CLNC DEL
118.2
CPDLC
GND CON
121.8
SAN FRANCISCO TOWER
120.5 269.1
NORCAL DEP CON
135.1 307.2

**TOP ALTITUDE:
3000**

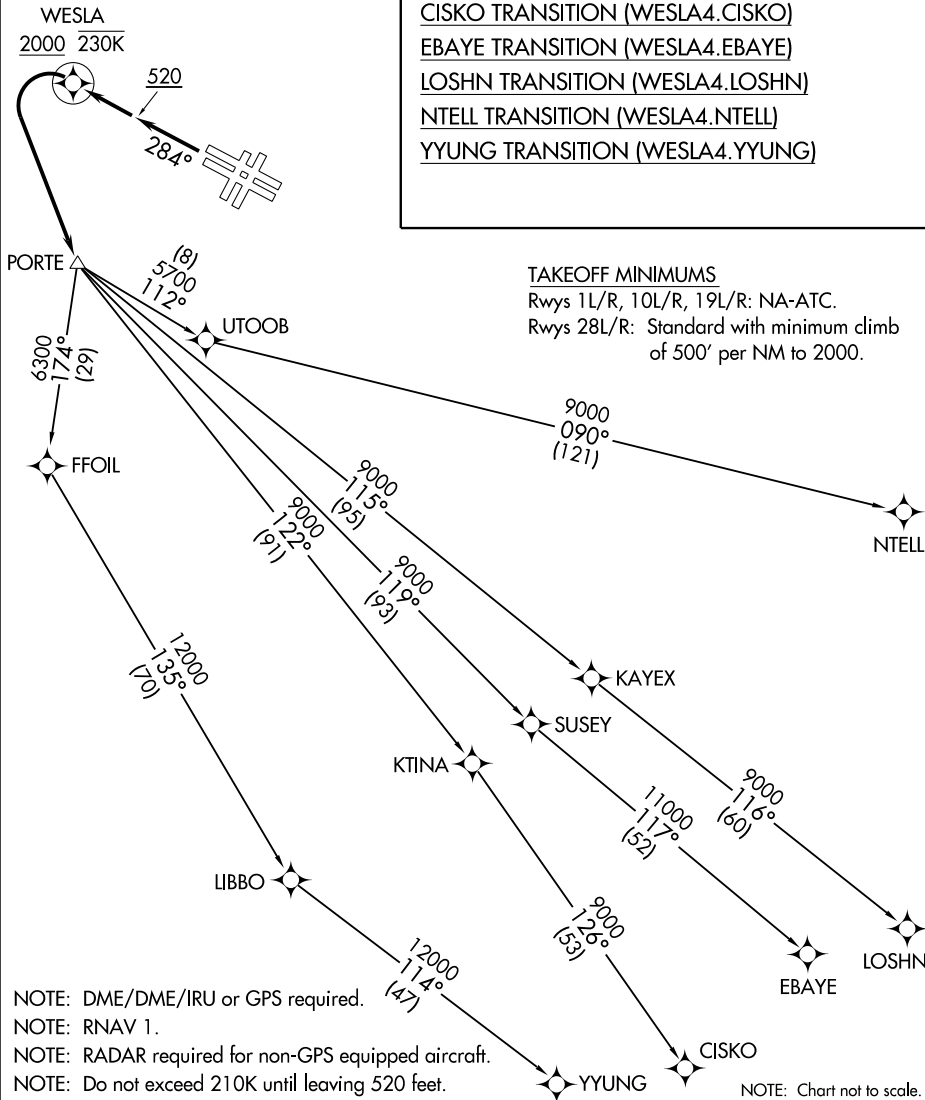
DEPARTURE ROUTE DESCRIPTION

TAKEOFF RUNWAYS 28L/R: Climb heading 284° to 520, then direct WESLA at or above 2000 and below 230K, then left turn direct PORTE, thence
. . . . on (transition) maintain 3000, expect filed altitude 10 minutes after departure.

- CISKO TRANSITION (WESLA4.CISKO)
- EBAYE TRANSITION (WESLA4.EBAYE)
- LOSHN TRANSITION (WESLA4.LOSHN)
- NTELL TRANSITION (WESLA4.NTELL)
- YYUNG TRANSITION (WESLA4.YYUNG)

TAKEOFF MINIMUMS

Rwys 1L/R, 10L/R, 19L/R: NA-ATC.
Rwys 28L/R: Standard with minimum climb of 500' per NM to 2000.



- NOTE: DME/DME/IRU or GPS required.
- NOTE: RNAV 1.
- NOTE: RADAR required for non-GPS equipped aircraft.
- NOTE: Do not exceed 210K until leaving 520 feet.

NOTE: Chart not to scale.

SW-2, 02 JAN 2020 to 30 JAN 2020

SW-2, 02 JAN 2020 to 30 JAN 2020

WESLA FOUR DEPARTURE (RNAV)

(WESLA4.WESLA) 13SEP18

SAN FRANCISCO, CALIFORNIA
SAN FRANCISCO INTL (SFO)

(SSTIK4.SSTIK) 18256

SSTIK FOUR DEPARTURE (RNAV)

SAN FRANCISCO INTL (SFO)
SAN FRANCISCO, CALIFORNIA

AL-375 (FAA)

D-ATIS
113.7 115.8 118.85
CLNC DEL
118.2
CPDLC
GND CON
121.8
SAN FRANCISCO TOWER
120.5 269.1
NORCAL DEP CON
135.1 307.2

**TOP ALTITUDE:
FL190**

DEPARTURE ROUTE DESCRIPTION

TAKEOFF RUNWAYS 1L/R: Climb heading 014° to 520 and at or below 210K, then climbing left turn direct SSTIK, then climbing left turn direct PORTE at or below 10000. Thence . . .

. . . on (transition). Maintain FL190, expect filed altitude 10 minutes after departure.

CISKO TRANSITION (SSTIK4.CISKO)

EBAYE TRANSITION (SSTIK4.EBAYE)

LOSHN TRANSITION (SSTIK4.LOSHN)

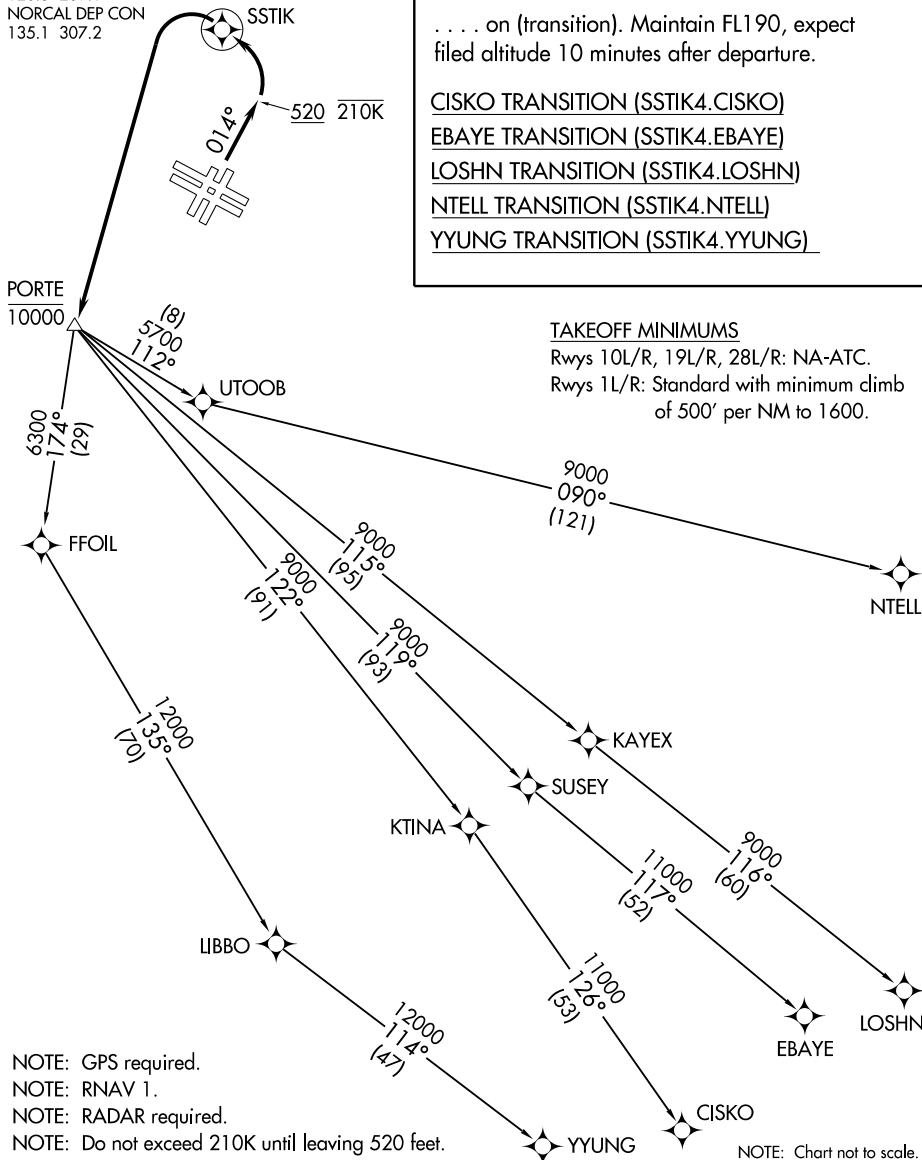
NTELL TRANSITION (SSTIK4.NTELL)

YYUNG TRANSITION (SSTIK4.YYUNG)

TAKEOFF MINIMUMS

Rwys 10L/R, 19L/R, 28L/R: NA-ATC.

Rwys 1L/R: Standard with minimum climb of 500' per NM to 1600.



NOTE: GPS required.
NOTE: RNAV 1.
NOTE: RADAR required.
NOTE: Do not exceed 210K until leaving 520 feet.

SSTIK FOUR DEPARTURE (RNAV)

(SSTIK4.SSTIK) 13SEP18

SAN FRANCISCO, CALIFORNIA
SAN FRANCISCO INTL (SFO)

SW-2, 02 JAN 2020 to 30 JAN 2020

SW-2, 02 JAN 2020 to 30 JAN 2020

D-ATIS 133.775
 CLNC DEL
 121.1
 CPDLC
 GND CON
 121.9 (Rwys 28L/R)
 121.75 (Rwy 30)
 OAKLAND TOWER
 118.3 291.65 (Rwys 28L/R)
 127.2 256.9 (Rwy 30)
 NORCAL DEP CON
 135.1 307.2

TOP ALTITUDE:
10000

DEPARTURE ROUTE DESCRIPTION

TAKEOFF RUNWAYS 28L, 28R: Climb heading 278° to 520, then direct to cross LEJAY at or below 2000, then on track 296° to CNDEL, then left turn direct to cross PORTE at or below 10000. Thence. . . .

TAKEOFF RUNWAY 30: Climb heading 296° to 520, then direct to cross LEJAY at or below 2000, then on track 296° to CNDEL, then left turn direct to cross PORTE at or below 10000. Thence. . . .

. . . . on (transition). Maintain 10000, expect filed altitude 10 minutes after departure.

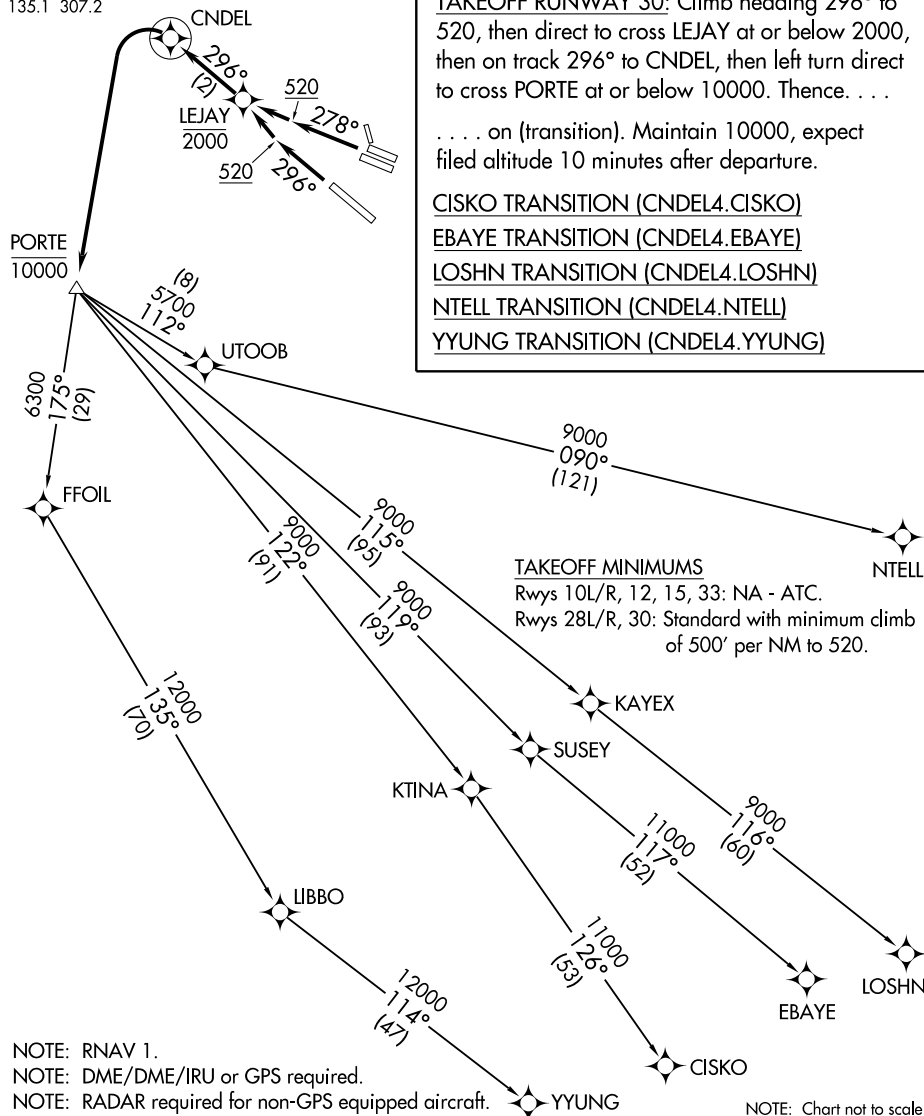
CISKO TRANSITION (CNDEL4.CISKO)

EBAYE TRANSITION (CNDEL4.EBAYE)

LOSHN TRANSITION (CNDEL4.LOSHN)

NTELL TRANSITION (CNDEL4.NTELL)

YYUNG TRANSITION (CNDEL4.YYUNG)



NOTE: RNAV 1.
 NOTE: DME/DME/IRU or GPS required.
 NOTE: RADAR required for non-GPS equipped aircraft.

NOTE: Chart not to scale.

