

The Citizen-Reporter



SHERMAN

WAVE COUNTRY WAVE

A Sherman County Government Publication — August 2019

Wasco School Events Center News

Saturday, August 31 & Sunday, September 1: A **rummage sale** will be held at WSEC from 10:00 a.m. to 3:00 p.m. each of these days. Tables are \$10 each and can be reserved by calling Melissa Kirkpatrick at 541-442-5778. The Events Center will also have several items for sale including bookshelves, chalkboards, bulletin boards, household items, a piano, and sports equipment. If you would like to donate items to the Events Center for the sale, please contact Melissa about a time to drop them off. Please, no clothing or shoes, electronics, or books/magazines.

Sunday, October 21: Our fall fundraiser, **An Afternoon of Sherman County Talent**, will be held in the Leland Schwendel Auditorium from 2:00 to 5:00 p.m. There will be a silent auction of 25+ items donated by Sherman County artists, and include metal work, jewelry, textile arts, photography, greeting cards, paintings, signs, and much, much more. Also, 15 artists will display and/or sell some of their original art work. Tickets are \$10 and include admission, appetizers, and a glass of wine or beer. More beer and wine may be purchased at the event. Tickets will be for sale at the Events

Center and Wasco City Hall during their business hours, and at the door the day of the event.

Rooms/Offices for Rent: There are now four rooms that have been painted, repaired, and cleaned, and are available to rent. Rooms range in size from 130 square feet to 700 square feet; one room includes a sink. If you would like to open or relocate a business to Wasco, this is the perfect location. Again, please contact our director, Melissa, for a tour and more information.

Continued on Page 2...

Church painting donated by Jane Root Winters for October 21st fundraiser.



2020 Primary Election Notice

Notice is hereby given that on Tuesday, May 19, 2020 the Sherman County Clerk's Office will be conducting the 2020 Primary Election by mail. Candidates can file for office from September 12, 2019 until the deadline of 5:00pm on March 10, 2020. Candidates for the offices below may file at the County Clerk's office by one of the following methods: 1) submit form SEL 101 and pay a \$50 filing fee; 2) submit form SEL 101 and petition to obtain signatures. The following county offices will appear on this ballot:

PARTISAN OFFICE:

Major party candidates will be nominated for this office at the Primary and elected at the November 3, 2020 General Election:

County Commissioner, Position 1 – 4 year term (Current: Joan Bird)

NONPARTISAN OFFICES:

Candidates for the following nonpartisan office may be elected at the Primary; no filing fee is required:

Justice of the Peace – 6 year term (Current: Ron McDermid)

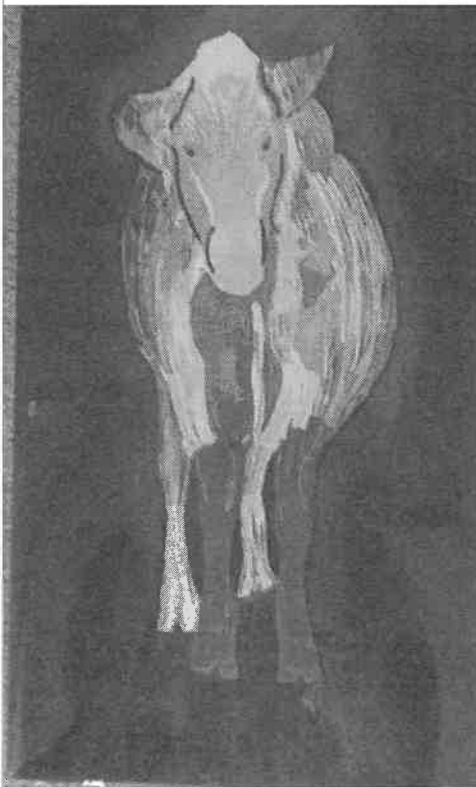
Candidates for the following nonpartisan offices will be nominated

Continued on Page 4...

Wasco School continued...

Pickleball Tournament: WSEC will be sponsoring a round-robin pickleball tournament on Monday, September 2. There will be a women's bracket, men's bracket, and, possibly, a mixed doubles bracket. Players can sign up at the WSEC gym. Cost is \$10 per player per bracket, and this will go towards prizes and to purchase supplies for the gym. Limit 10 people per bracket. More information will be made available at a later date.

Notary Public: Director Melissa Kirkpatrick is now a notary public, and for \$3 per item, she can notarize your items. Contact her during business hours to let her help you.



A piece of art donated by Karla vonBorstel Chambers for the October 21st fundraiser.

Sherman County Board of Property Tax Appeals Board Openings

The Sherman County Board of Property Tax Appeals (BOPTA) has board openings for the 2019-20 tax year. These positions are open to non office-holding residents of Sherman County. A non office-holding resident cannot be: a member of the county governing body, a member of the governing body of any taxing district within the county, an elected official within the county, a person employed in or hired by the county or any taxing district within the county, a former county assessor, or any appointee acting in the place of the assessor that held the office or was appointed during the tax year subject to appeal to BOPTA, or a person previously employed in or hired by the office of the assessor during the tax year subject to appeal to BOPTA.

Board members hear petitions for reduction of the real market, maximum assessed, specially assessed, and assessed value of property placed on the roll by the county assessor as of January 1, 2019. The board will also consider requests to waive penalties assessed for the late filing of real and personal property returns.

An initial training session is required for new members and for those members returning after a break in service. Board members are required to attend training approved by the Department of Revenue at least every other year unless no petitions are filed. The BOPTA board generally meets for one or two sessions during the year between February and June. The one-year term ends on June 30, 2020.

If you are interested in being considered for the BOPTA board, please contact Jenine McDermid at 541-565-3606 or by email at: countyclerk@shermancounty.net no later than Friday, September 27. BOPTA pool members will be appointed by the county governing body on October 2, 2019.

The Sherman County Soil & Water Conservation District announces recipients of 1st SWCD scholarship

The Sherman County Soil & Water Conservation District is pleased to announce the recipients of the first Sherman Co. SWCD Scholarship. Applicants must be a graduating high school senior of Sherman County High School or College/Higher Education Student and hold a 2.5 GPA or better. The Sherman SWCD is happy to award a \$1,000 scholarship to the following students; Savannah Moe, Tyler Jones, Max Martin, Wyatt Stutzman and Kevin Hart. For more information about the scholarship program contact the office at 541-565-3216 or email amanda.whitman@or.nacdn.net.

Sherman County Victim's Assistance Program Has Trained Car Seat Technician

Sherman County Victim Assistance Program, located in the District Attorney's Office, has a trained Car Seat Technician. The services that this Technician can provide include but is not limited to car seat installations, child safety educational materials, car seats at a first come first serve basis for families in need, and answer car seat questions. Please contact the office during business hours at (541) 565-5030.

Public/School Library Updates

SUMMER HOURS

Tuesday 11:00 a.m. – 7:00 p.m.
 Thursday 11:00 a.m. – 7:00 p.m.
 Saturday 10:00 a.m. – 4:00 p.m.

LIBRARY AFTER HOURS - WEDNESDAYS 6:00PM-8:00PM:

Grades 7-12 - come to the library for movies, games, food, crafts, or just hanging out.

LIBRARY BOOK CLUB

Please join us for tea, dessert, and discussion of our monthly book. To request a hold, call, e-mail, or stop by. Available in Large Print and Audio by request. August's book is *Run Away* by Harlan Coben.

Phone:

541-565-3279

Address:

65912 High School Loop
 Moro, Oregon, 97039

Website:

ShermanCountyPSL.weebly.com/

Email:

shermanlibrary@sherman.k12.or.us

"Like" us on Facebook at Sherman County Public School Library

DROP-IN PROGRAMS: ALL AGES

Craft Day: Every Tuesday from 12pm-3pm, come to the library, enjoy our air conditioning, and use our crafting equipment and supplies. Support will be available for the vinyl cutter and the 3D printer.

Snack Time: Preschool through 12th grade. Come enjoy healthy and fun snacks and cold drinks during open hours all summer.

SUMMER MOVIE NIGHT (varied start times)

August 8 6:00pm *Five Feet Apart*

Rated: PG-13, 1 hour 56 minutes

August 22 **5:00pm** *Avengers Endgame*

Rated: PG13, 3 hours

NEW BOOKS AT THE LIBRARY

<i>Evvie Drake Starts Over</i>	Linda Holmes
<i>Daisy Jones & the Six</i>	Taylor Jenkins Reid
<i>Storm Cursed</i>	Patricia Briggs
<i>The Pioneers</i>	David McCullough
<i>The Guest Book</i>	Sarah Blake
<i>The British Are Coming</i>	Rick Atkinson
<i>Queen Bee</i>	Dorothea Benton Frank

SCHEDULE YOUR OWN PROGRAM

Tech help: Do you need help installing a program? Is your e-mail making you cranky? Need help navigating a website? Make an appointment with Abbey and she will help you with your tech problems.

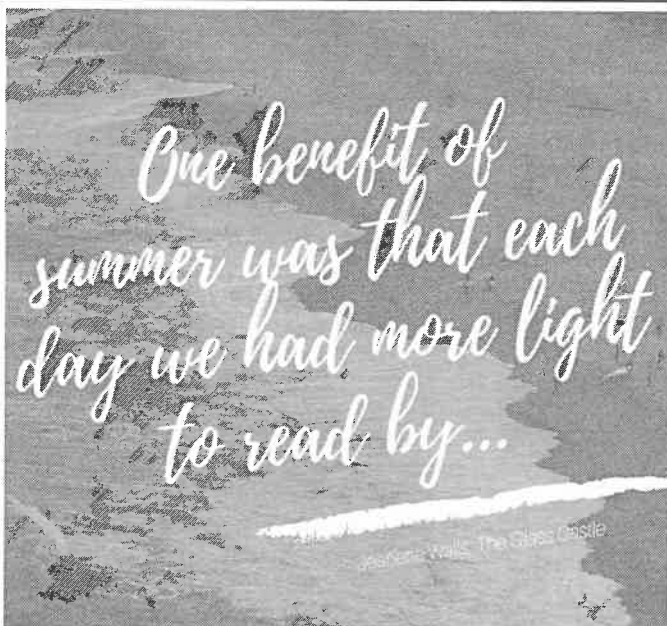
Craft help: Did you drop a stitch? Do you want to learn to crochet? Do you need help painting a sign? Do you want to learn how to use the 3D printer? Do you want to make a t-shirt? Make an appointment with Abbey to get your craft on!

CRAFTS IN STACKS 2:00PM-4:00PM

August 27 Indoor Succulents (all ages)

COMMUNITY STORY TIME AGES 0-6

Join us every Tuesday at 11:00am throughout August



-Marylou Martin, Library Director

Sherman County Historical Society Annual Night at the Museum Fundraiser

The Sherman County Historical Society Event Committee is busy planning the first annual Night at the Museum Fundraiser. On September 14, 2019, we will be showcasing local breweries that will bring their favorite brews for an evening at the museum with dinner provided by local caterers. A limited amount of tickets will be offered for the main event and a limited number of VIP tickets. The VIP ticket holders will be bussed to a secret location in the county, receive a special brew sample with appetizers, an exclusive tour of the mystery venue and then bussed to Museum in time for the main event.

As a fundraising effort, all money earned will be used for museum operations and general improvements for the historical society. In an effort to bring new volunteers and members to our award-winning museum, free admission for the day will be included with the purchase of a ticket. We have received a grant from the Sherman County Cultural Coalition. Mid-Columbia Producers, Wheatland Insurance and RDO Equipment are Porter level sponsors; Bank of Eastern Oregon and Apex Truck Repair are Ale level sponsors.

We are looking forward to making this a truly special showcase of Mid-Columbia businesses and our museum facility, with the goal of making this annual event one you won't want to miss.

Tickets to the main event are \$35 and VIP tickets are \$50, available at the museum or contact committee members, Carrie Kaseberg, Gail Macnab, Johnathon Rolfe, Chris Kaseberg, or Kalie Rolfe.

There will also be a silent auction at this event and we are seeking donations. If you would like to contribute to this portion of the evening, we would be over-the-top grateful. Please drop your donation off

at the museum and be sure to include the following information: who donated it, what is the value, and anything else we would need to know.

Thank you in advance for supporting this event and we hope to see you on September 14th!

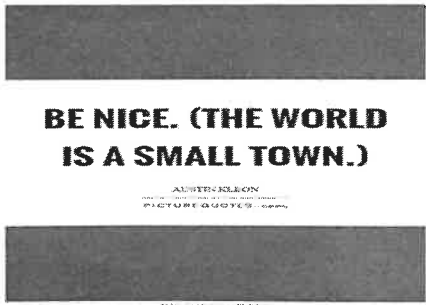
2020 Primary Election Continued...

at the Primary and elected at the November 3, 2020 General Election.

County Sheriff – 4 year term (Current: Brad A. Lohrey)
County Clerk – 4 year term (Current: Jenine McDermid)

Other public offices for which the Secretary of State will accept declarations of candidacy or petitions for nomination or election for this election can be found at the following link: <https://sos.oregon.gov/elections/Documents/open-offices.pdf>

All election forms and manuals are available on-line at the Oregon Secretary of State, Elections Division: <https://sos.oregon.gov/elections/Pages/laws-rules-publications.aspx> and on the Sherman County Clerk's web page: <https://www.co.sherman.or.us/archive-county-election-results/> Forms are also available at the Clerk's Office in the Courthouse which is located at 500 Court Street in Moro. Please call office staff at 541-565-3606 if you have questions.



Fencing and Rangeland Restoration Grant

The Sherman County Area Watershed Council is interested in applying for a large grant through the Oregon Watershed Enhancement Board (OWEB) this fall to provide cost share on riparian and upland cross fencing, along with rangeland restoration. Potential rangeland restoration practices include range seeding, annual grass control, spring developments, and other practices improving range health. Landowners will have 4 years to complete projects and cost share is 75% without a project cap. In addition to addressing resource concerns in riparian and rangeland areas, our hope is that this grant will allow landowners to fence off riparian buffers under the Conservation Reserve Enhancement Program (CREP) and utilize existing pastures outside of CREP buffers. Upland cross fencing will allow for increased rotational grazing management to improve rangeland and livestock health in Sherman County, along with other rangeland practices. **If interested please contact Jacob Powell with the Watershed Council by September 15th** at (541) 565-3216 so we can complete required site visits and start getting an application together.

Upland cross fencing



The Judge's Corner

One of the most humbling moments of the past couple months was when I brought tears to the eyes of a local World War II Veteran. I stopped in to have lunch at the senior center, saw him and sat down. I shared with him that each time I see him, or any of the few remaining World War II Veterans, my first thought is "There goes one of the greatest." He teared up and so did I. I also recently had the honor of helping one of our veterans after an incident, and that is how it made me feel – that it truly was an "honor" to help him.

In early June our Tri County Veterans Officer put on a Veterans fair in Arlington, which was a success. Thank you to Dr. Monte Junker and Expanded Practice Dental Hygienist Ashley Danielson with Advantage Dental for putting on the dental clinic. Thank you as well to everyone who helped to make this event successful.

During the first part of July Sherman County had visits from both U.S. Senators. Senator Wyden toured the hemp facility in Grass Valley. I rode

with him as he visited a hemp field, and then he attended a town hall meeting at the Grass Valley Pavilion. This was his first town hall meeting he attended in Grass Valley since 2001. Senator Merkley toured the new courthouse building, even going up onto the roof to view the solar panels.

The county court visited DeMoss Memorial Park, with the agenda of deciding what to do with the stage. If you haven't stopped by recently I would recommend doing so, it is a beautiful park. We also later toured the cabins for rent at Cottonwood State Park, on our way home from Tri County Court in Condon.

Kayla vonBorstel, the county court administrative assistant, is on maternity leave after the birth of her daughter Autumn Rose. Kristi Brown from the clerk's office is helping out 3 days a week cross-training so the court has an in-house backup person. Kari Silcox is also helping out as needed, when her job as manager of the senior center allows.

The court is currently involved with the building codes and the reserves that were built up while MCCOG ran the program. These reserves can only be used with a building codes program. I also attended the Opportunity Zone Workshop since the governor designated all of Sherman County as an Opportunity Zone. This has created some tax benefits for investors.

I also have an update for those who have been following Frontier Telenet over the past few years. When I first came on board they were in dire straits financially. After Sherman County loaned them \$100,000, under new management, Frontier Telenet was able to repay this loan within 6 months.

This job is a constant learning experience. Every time something new and challenging comes up, I remember a poster I had on my wall as a kid - it said "JUST DO IT".

"Most bad government has grown out of too much government." – Thomas Jefferson

FAQ's About Wildfire Smoke and Public Health

Q: Why is wildfire smoke bad for my health?

A: Wildfire smoke is a mixture of gases and fine particles from burning trees and other plant material. The gases and fine particles can be dangerous if inhaled. In wildfires, carbon monoxide is mainly a risk to people (like firefighters) who work near smoldering areas. Smoke can irritate your eyes and your respiratory system, and worsen chronic heart and lung diseases. The amount and length of smoke exposure, as well as a person's age and degree of susceptibility, play a role in determining if someone will experience smoke-related health problems. If you are experiencing serious medical problems for any reason, seek medical attention immediately.

Q: Why is everyone talking about particulate matter?

A: The particulate matter (also called "PM") in wildfire smoke poses the biggest risk to the public's health. The potential health effects vary based on the type of plants burning, atmospheric conditions and, most importantly, the size of the particles. Particles larger than 10 micrometers usually irritate only the eyes, nose and throat. Fine particles 2.5 micrometers or smaller (PM2.5) can be inhaled into the deepest part of the lungs, and may cause greater health concern.

Q: Who is most likely to have health effects from wildfire smoke exposure?

A: Smoke may worsen symptoms for people who have pre-existing health conditions and those who are particularly sensitive to air pollution. Sensitive groups include:

- * Persons with asthma or other chronic respiratory disease
- * Persons with cardiovascular disease

- * Persons ≥ 65 years of age
- * Infants and children
- * Pregnant woman
- * Smokers, especially those who have smoked for several years

PUBLIC HEALTH DIVISION
<http://Public.Health.Oregon.gov2>

Q: How can I tell if wildfire smoke is affecting me or my family?

A: Wildfire smoke can cause the following:

- * Watery or dry eyes
- * Persistent cough, phlegm, wheeze, scratchy throat or irritated sinuses
- * Headaches
- * Shortness of breath, asthma attack or lung irritation
- * Irregular heartbeat, chest pain or fatigue

Continued on Page 6...

Weed District Report

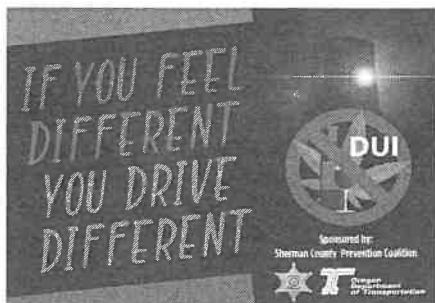
Rush skeletonweed is rapidly spreading across Sherman County. The fires from 2018 in Rufus, Biggs and all along the Deschutes River have made the problem even worse. Rush skeletonweed is an aggressive perennial plant, dropping a deep tap root as well as lateral roots, and producing parachute-like seeds that spread for miles through the wind. It is an aggressive "A" Class noxious weed that is often the first weed to come back after a fire, out-competing other vegetation.

Plants have been found in all areas of Sherman County, including the John Day River, Sherars Grade and Kent. All roadsides, scab patches and range ground should be checked for this plant. Towns are not immune either. Plants have been found in each town growing in vacant lots, alleyways and even back yards.

Best control methods are with herbicides, particularly Milestone which can be applied any time throughout the year. Fall treatments are especially effective as this perennial plant works to store nutrients deep in its roots for the winter. For help with identification or control methods, call the Sherman County Weed District at 541-565-3655.

Resident Incentive Applications Due

Resident Incentive Applications are due August 31, 2019. Applications can be found on Sherman County's website located at: co.sherman.or.us or by calling Sherman County's Finance Office at 541-565-3623.



FAQ's about Wildfires continued...

- * Nonfatal and fatal heart attacks
- * People with chronic heart disease or lung disease such as asthma and chronic obstructive pulmonary disease (COPD) may be more likely to have serious health effects from wildfire smoke.

Q: What should I do if I am having a health problem from smoke?

A: If you have a medical emergency from smoke, you should call 911 or go to the hospital emergency room immediately. Contact your healthcare provider for advice on how to prevent and treat symptoms from exposure to wildfire smoke.

Q: How can I protect myself and my family from the harmful effects of smoke?

- A:** Limit your exposure to the smoke:
- * Stay indoors whenever possible with the doors and windows closed.
 - * Reduce other sources of indoor air pollution such as smoke from tobacco, wood-burning stoves and burning candles.
 - * Use high-efficiency (HEPA) air-cleaning filters, if available.
 - * Avoid vacuuming, which can stir up dust.
 - * When driving in a vehicle, keep windows closed with air conditioning set to recirculate.
 - * Drink plenty of water to help reduce symptoms of scratchy throat and coughing.

Leaving the area of thick smoke may be best for those with health conditions that put them at higher risk for illness from wildfire smoke.

Q: What can I do to deal with eye irritation from wildfire smoke?

A: Wildfire smoke can cause burning, redness and tearing in the eyes. To relieve the symptoms, you can use over-the-counter artificial tear drops and drink enough water. Running a humidifier may also provide relief. Consult with a healthcare provider if symptoms last longer than several days. If you are in an area where there is a lot of ash or fine dust, consider wearing goggles.

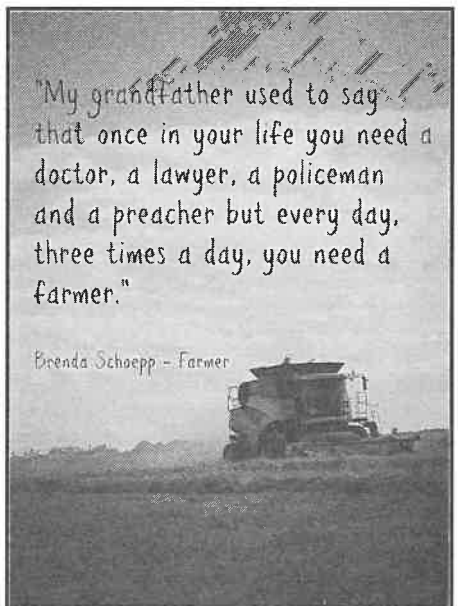
Cash Grants Available To Address Housing Needs in Sherman County

Sherman County is offering two cash grants to ease costs and address the demand for more livable housing in Sherman County. Act now before the money runs out!

The New Rental Housing Development Grant will contribute \$10,000 per new rental housing unit constructed to the developer. Funds are given as a grant upon completion of the project with a commitment to keep the property as a long term rental for a minimum of 5 years.

The Housing Rehabilitation Grant provides a reimbursement of up to 20% of eligible expenses for the rehabilitation of existing non-owner occupied stick-built dwellings. This grant will not exceed \$20,000.

For more information and links to applications visit co.sherman.or.us and search for rental housing. Contact Marla Harvey at (541) 296-2266 or via email at marla@mcedd.org with any questions or to apply. Funding is limited. This program is funded by Sherman County.



110th Annual Sherman County Fair

August 20th – 25th, 2019

Fair books will be available soon!

- Tuesday – 4-H Horse Show
- Wednesday – 4-H Style Revue, Fair Board BBQ & Classic Car Show
- Thursday – 4-H Market Judging
- Friday – 4-H Showmanship & Bull Riding
- Saturday – Livestock Sale, Demolition Derby & Fair Dance

Reminders About Wildfire Smoke Inhalation Prevention

With the start of wildfire season, comes the potential for dangerous wildfire smoke. North Central Public Health District would like to remind residents in our region to take precautions to avoid illness, due to wildfire smoke inhalation, when air quality reaches unhealthy levels.

Smoke from wildfires is a mixture of gases and fine particles from burning trees and other plant materials. Smoke can hurt your eyes, irritate your respiratory system, and worsen chronic heart and lung diseases.

Poor air quality conditions are a health threat and all residents should limit their exposure to smoke. Those with respiratory or heart disease, the elderly, and children, are advised to stay indoors when the air-quality is poor.

Air quality can change quickly. Please visit the Oregon Smoke Blog and the DEQ Air Quality Index links below. DEQ air quality monitoring data is updated hourly and is color-coded for easy to read information. Unfortunately, the only permanent monitor for our region is in The Dalles, with Hermiston and Prineville being the

next closest monitors. A link is also provided below with information on the 5-3-1 Visibility Index, if there's not a monitor near you.

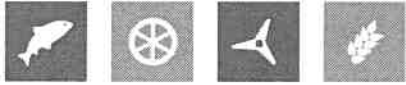
Please take the following precautions to avoid breathing problems or other symptoms from smoke:

1. Be aware of smoke concentrations in your area. See the links below for DEQ's Air Quality Index and Oregon Smoke blog or use the Visibility Index.
2. Avoid working or exercising outdoors when air quality is poor. Limit outdoor sports, work and recreation.
3. Drink lots of water - staying hydrated can keep your airways moist which will help reduce symptoms of respiratory irritation such as scratchy throat, running nose and coughing.
4. Try to avoid driving in smoky areas. If you do need to drive in these areas, keep your windows rolled up and vents closed. If you need air conditioning, make sure you set your system on "re-circulate" to avoid bringing smoke into your car.

5. Avoid smoke by staying indoors, closing all windows and doors and use a filter in your heating/cooling system that removes very fine particulate matter. Portable air cleaners with HEPA filters can also help keep indoor air cleaner in smaller spaces.

6. People with concerns about health issues, including those suffering from asthma or other respiratory problems, should follow their breathing management plans; keep medications on hand, and contact healthcare providers if necessary.

7. Use of masks or bandanas doesn't filter out gases or fine particles. An N95 respirator can provide some protection, but only if the person using it has had a fit-test to make sure it fits properly, and the respirator is worn correctly. N95 respirators are not available in children's sizes. For more information about the use of masks, please visit CDC Respirator Factsheet link below. For respirator use in the workplace, contact your employer or Oregon OSHA at the link below.



SHERMAN
COUNTY



Presorted Standard
U.S. Postage
PAID
Moro, OR
Permit No. 4

500 Court Street, P.O. Box 365
Moro, Oregon 97039
<http://www.co.sherman.or.us>

Postal Patron

Three Easy Steps to Recycle!

Do Not Recycle:

- Carbon paper
- Food-contaminated packaging
- Clear “clamshells” (berry, bakery or battery packages)
- Frozen food boxes or food stained paper
- Label backing sheets
- Paper towels, tissue, napkins
- Photographs
- Plastic-coated envelopes
- Wax, plastic or foil-coated paper
- Styrofoam.

First Sort: Commingled:

- PAPER - white and colored paper (staples OK) newspapers, magazines, catalogs, junk mail, phone books, paperback books, spiral-bound notebooks, shredded paper in a paper bag, cereal & cracker style boxes (liner removed), cardboard tubes, paper bags, egg cartons, milk cartons & juice boxes.
- PLASTIC - plastic bottles with a neck, plastic tubs 6 oz. to 5 gal, plant containers 4 inches & larger.
- METAL - aluminum cans, tin cans (flattened), clean aluminum foil & foil baking pans, empty aerosol cans (discard cap).

Second Sort:

- All glass bottles & jars - rinsed. No lids.

Third Sort:

- Corrugated cardboard - flattened.

All items should be clean & rinsed with lids removed & flattened if possible.



The Solid Waste Transfer Site:

72526 Welk Road
Open every 2nd & 4th Saturday
10 a.m. until 2 p.m.

The Dalles Disposal
1317 West 1st Street -The Dalles, 97058
(541) 298-5149

Self-Haul Recycling Depot Schedule:

- Moro 9 am - 4:30 pm: 2nd Friday & Saturday
- Wasco 9 am - 4:30 pm: 3rd Friday & Saturday
- Rufus 9 am - 4:30 pm: 4th Friday & Saturday
- Grass Valley 1-3 pm: Monday & Tuesday weekly