

# SOLANO COUNTY REGIS

## Meeting Agenda



Location: Virtual Microsoft Teams Meeting  
[Click here to join the meeting](#)

Date: September 21, 2022  
Time: 9:00am ~ 10:00am PST  
Facilitator: Curt/Sean

1. Introductions (5 mins)
2. Approval of July 20 meeting minutes, and New Business (10 mins)
  - a. Open floor
3. Discussion (35 mins)
  - a. Sanborn Imagery Presentation – Bridgette
  - b. Lidar Workgroup Update (next year flight)
  - c. EOS News - August flood exercise
  - d. Broadband update from August 23 council meeting
  - e. GIS Day
  - f. Desktop GIS Training
4. Action Items (5 min)
  - a.
  - b.

### Principal Organization Contact:

Sandy Ayala	Benicia	Stewart Bruce	Solano County
Jordan Santos	Dixon	Kathrina Gregana	STA
Jasmin Acuna	Fairfield	Rowland Roberts	Suisun City
Nellie Dimalanta	FSSD	Dan Mattheis	Travis AFB
Robin Borre	Rio Vista	Curt Corbett	Vacaville
Justin Pascual	SCWA	Alex Lacson	Vallejo
Bao Nguyen	SID	Mariah Henderson	VFWD

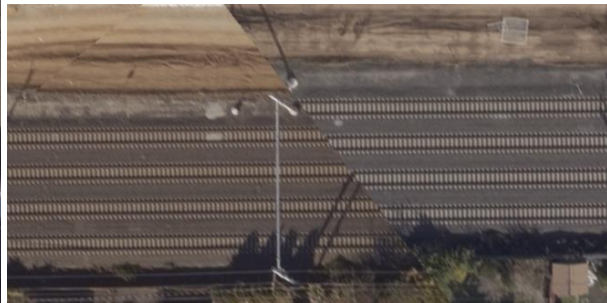
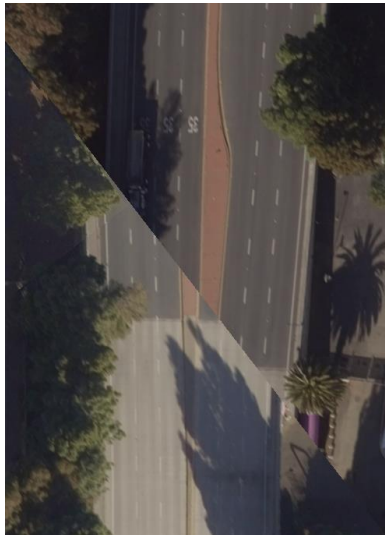


The creation of ortho imagery involves a number of important steps, beginning with the actual orthorectification, which corrects the geometric distortions inherent in digital aerial imagery, and turns it into a true map product. The process also involves mosaicking, and a variety of radiometric corrections, which turn the numerous individual photo images into one seamless database, with uniform, pleasing, realistic color characteristics.

Orthorectification corrects for inherent geometric distortions in the image that are caused by terrain variance, earth curvature, and camera orientation in relation to the ground.

The purpose of this document is to give reviewers examples of items that we do not expect you to see but if you do, please add a feedback/issue point or examples of items you may see that are **not** an issue and a feedback/issue point should **not** be added.

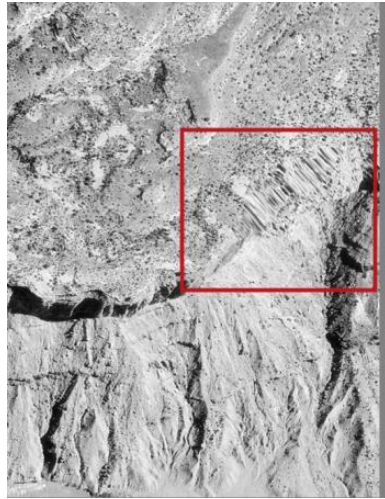
1. Examples of items that if you find them, please add a feedback point.
  - a. Accuracy requirement: Imagery will meet or exceed 2-pixel RMSE.
  - b. Edge matching: Mis-aligned linear features on the ground, such as roads and railroad tracks



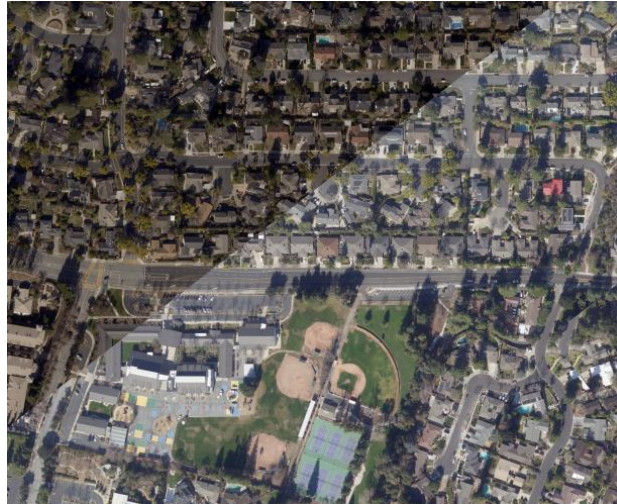
- c. Warped bridges



d. Smearred Terrain



e. Inconsistent radiometry: Stark color difference



2. Examples of items that you may encounter during your review but are not an issue and a feedback point should **not** be added.
  - a. Orthoimagery may not align with satellite basemap due to different requirements



# sanborn

Corporate Headquarters  
1935 Jamboree Drive  
Suite 100  
Colorado Springs, CO 80920

Phone: 719.593.0093  
Toll-Free: 1.866.726.2676  
Fax: 719.528.5093  
[www.sanborn.com](http://www.sanborn.com)



- b. Above ground features such as power lines may be warped, mis-aligned and/or offset; this is expected. Orthoimagery rectifies to the ground, not above ground features.

