

Solano County
2021 Redistricting
Community Outreach



Agenda

Things we will cover:

- Redistricting Basics
- Redistricting Advisory Commission
- Traditional Redistricting Principles
- Fair Maps Act
- Map Tool Demonstration
- Public Testimony on Communities of Interest
- Public Hearing Schedule

What is Redistricting

Definition

Redistricting is the process of adjusting district lines every 10 years after the release of the U.S. Census. The well-known examples are Congressional and State Legislative Districts, but local governments also must do redistricting.

- The County of Solano also must go through this process, as it did in 2011, to ensure the supervisorial districts are rebalanced after the decennial census.
- Beyond creating districts of equal population, redistricting also serves to empower local communities and preserve voting rights.

Redistricting Advisory Committee

Definition

The County Board of Supervisors appointed a 15-member Redistricting Advisory Committee (RAC21) to assist them in conducting community outreach to identify the communities of interest's countywide and within their respective districts.

Outreach efforts between now and when the 2020 Census data is released in the Fall to allow the Board sufficient opportunities to conduct public hearings to consider potential district map options before the December 15, 2021 deadline to approve final maps.

Redistricting Advisory Committee

The 15-member Commission is appointed by the Board of Supervisors

District 1

- Tiffanee Jones (Lead)
- Cassandra James
- Alex Matias

District 2

- Chris Angle (Lead)
- Stephanie Cobb
- Mina Diaz

District 3

- Delon Jackson (Lead)
- Debra Russo
- Mike Nail

District 4

- Shawn Smith (Lead)
- Steve Greenberg
- Vacant

District 5

- Jim McCully (Lead)
- Rosie Enriquez
- Vacant

Traditional Redistricting Principles

Preventing a Districting from becoming a Gerrymander

There are a number of criteria that have been used nationally and upheld by courts.

- Relatively equal size - people, not citizens
- Contiguous – districts should not hop/jump
- Maintain “*communities of interest*”
- Follow city/county/local government lines
- Keep districts compact – appearance/function

Traditional Redistricting Principles

Drawing New Board of Supervisor Lines for Fair Representation

There are a number of criteria that have been used nationally and upheld by courts.

- Relatively equal size - people, not citizens
- Contiguous – districts should not hop/jump
- **Maintain “*communities of interest*”**
- Follow city/county/local government lines
- Keep districts compact – appearance/function

Additional Redistricting Rules

Criteria required in Solano County Beyond Traditional Principles

The FAIR MAPS Act adds more criteria to the process.

- Not consider Incumbents / Candidates.
- Not draw districts to advantage or disadvantage a political party.
- Hold minimum set of hearings, encourage public engagement.
- Posting of all redistricting commission information on a website that is maintained *for the next 10 years*.

Communities of Interest

Bringing like people together for representation

A community of interest includes ethnic and language minorities and other groups.

- Communities covered by the Voting Rights Act
 - Latinos
 - Asians
 - African Americans
 - Native Americans

While race is a community of interest, it cannot be the *predominant factor* in drawing district boundaries.

Communities of Interest

Bringing like people together for representation

Other examples are:

- Neighborhoods
- Your high school and junior high areas
- Senior citizens or student populations
- Downtown / urban
- Rural or agricultural
- Homeowners or renters

Communities of Interest

Three Critical Questions in Defining for Redistricting

- Does the community have a shared culture, characteristics or bond?
- Is the community geographic in nature? Is the community able to be mapped?
- Describe the community's relationship with the jurisdiction and how it is affected by the policy decisions made by the elected officials.

Communities of Interest

Examples of Community of Interest testimony



Communities of Interest

Examples of Community of Interest testimony



Map Submissions

Online Map Submissions will be available in the coming month after the city completes development / hosting of the Online Redistricting software

Two types of expected input:

- Community of Interest Maps (June – End of Process)
- District Plans Based on 2020 Data (Release of Data – Final Adoption)

Communities of Interest

Drawing YOUR Communities of Interest

The County of Solano will be using DistrictR as a public mapping tool to allow residents to draw their own Communities of Interest.



You draw the lines.

<https://districtr.org/california>

Community of Interest Forms

Submitting Your COI Form

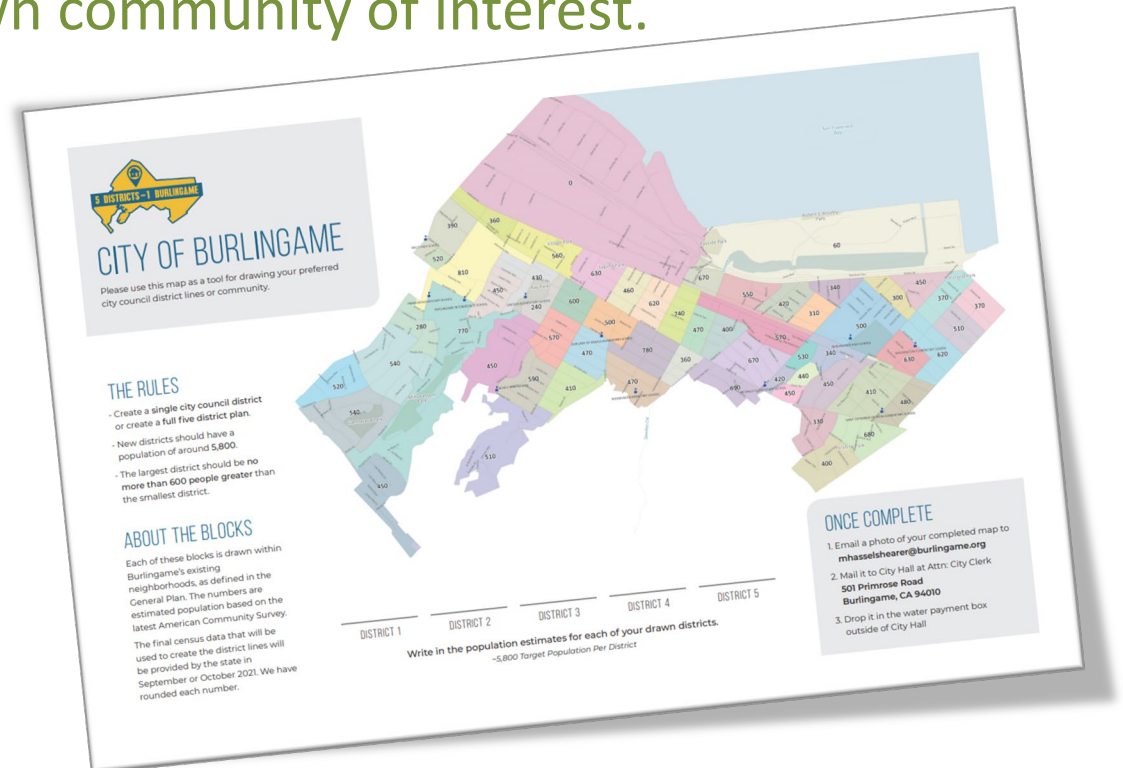
- Input can be provided in public hearings or using our “Community of Interest Worksheet.”
- This can be provided on the website as a part of overall community engagement strategy.
- Some agencies convert these to a webform or survey instrument.



Communities of Interest

Drawing YOUR Communities of Interest

There will also be laminated paper maps for the public to use to draw their own community of interest.



Solano County Redistricting Advisory Commission

Timeline for Upcoming Meetings

May 11 th	RAC Appointed by the Board of Supervisor
May 20 th	RAC Training #1 – Introductory & Governance
June 3 rd	RAC Training #2 – Redistricting 101
June 17th	RAC Training #3 – Public Outreach Hearings

Scheduled Community Outreach Meetings

Wednesday Evenings

District 2 - June 23, 2021, 6 – 8 pm
District 1 - June 30, 2021, 6 – 8 pm
District 3 - July 7, 2021, 6 – 8 pm
District 4 - July 14, 2021, 6 – 8 pm
District 5 - July 21, 2021, 6 – 8 pm

Saturday Mornings

District 1 - July 31, 2021, 9-11 am
District 2 - August 7, 2021, 9-11 am
District 3 - August 14, 2021, 9-11 am
District 4 - August 21, 2021, 9-11 am
District 5 - August 28, 2021, 9-11 am



**REDISTRICTING
PARTNERS**

Prepare Your Testimony

An important way for your community to have your voice heard during redistricting is by providing testimony

1. Introduction
2. Describe a Map of Your Community
3. Describe Your Community
4. Describe differences or similarities to other communities
5. Closing