



BRAZIL STREET | LOT 228



BRAZIL STREET | LOT 228



B R A Z I L   S T R E E T   |   L O T   2 2 8



BRAZIL STREET | LOT 228

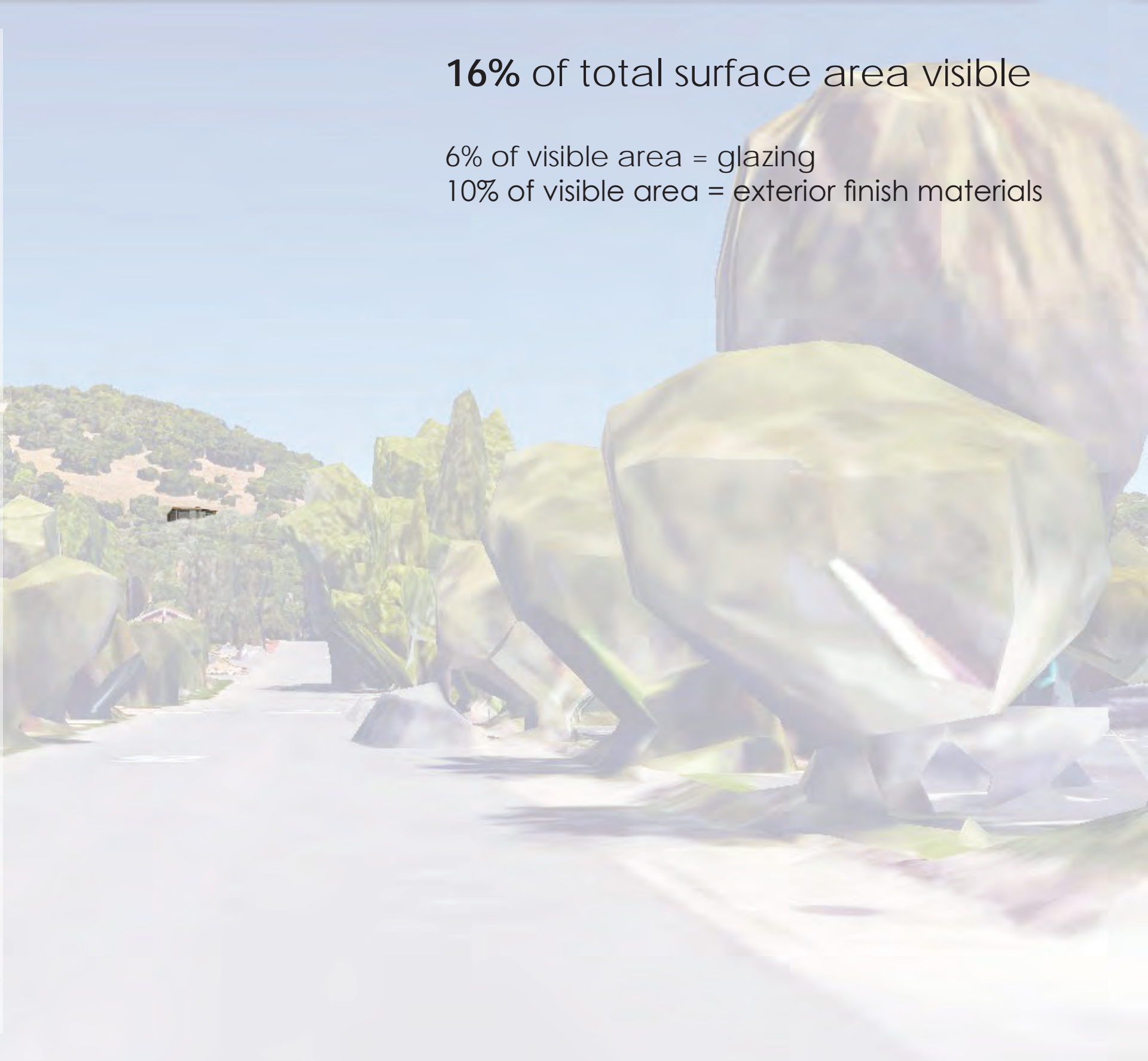
view from 4th + sebastiani winery looking north towards lot 288



16% of total surface area visible

6% of visible area = glazing

10% of visible area = exterior finish materials



BRAZIL STREET | LOT 228



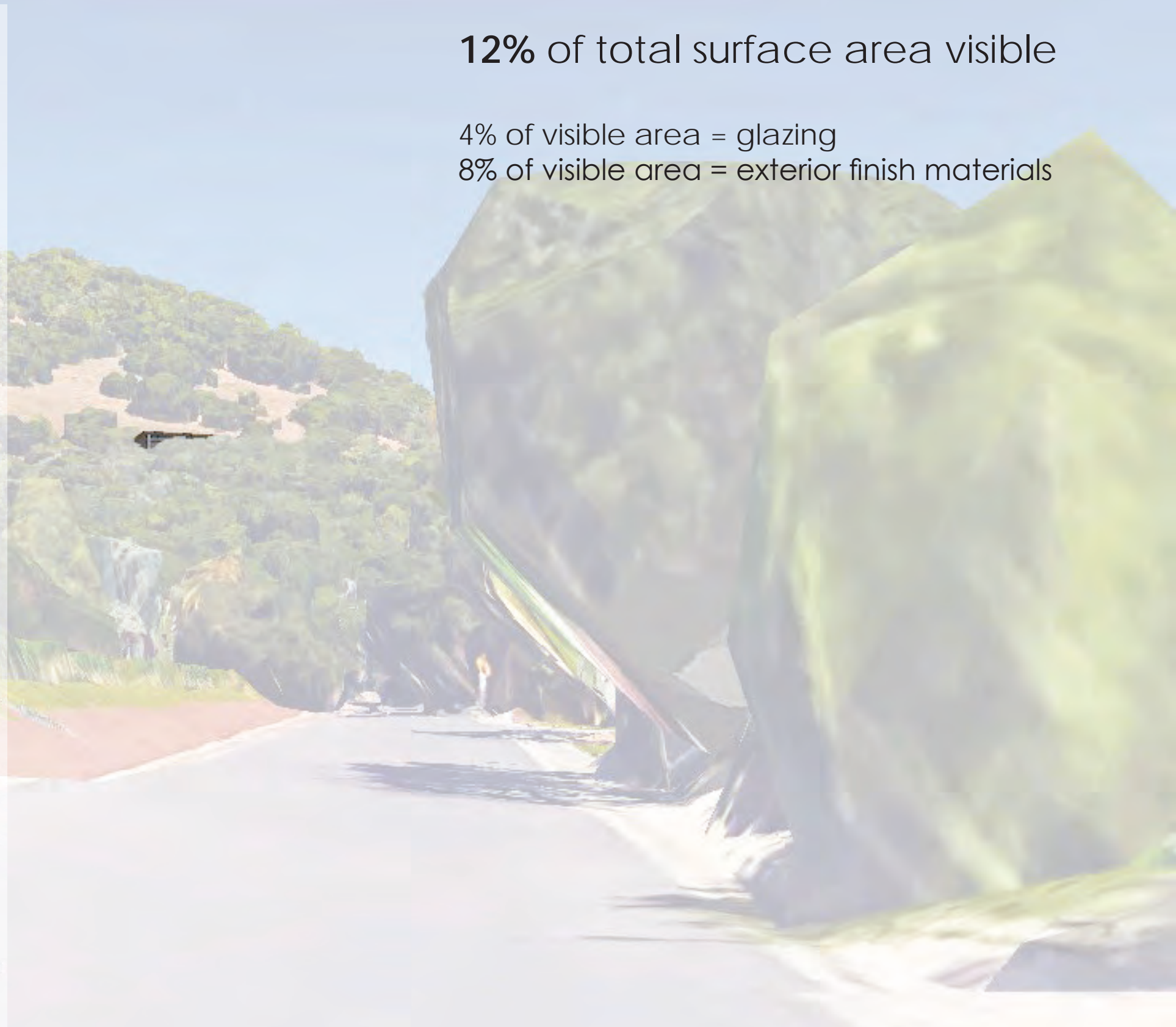
B R A Z I L   S T R E E T   |   L O T   2 2 8

view from 4th + lucca court looking north towards lot 288

12% of total surface area visible

4% of visible area = glazing

8% of visible area = exterior finish materials



BRAZIL STREET | LOT 228

view from 4th + lucca court looking north towards lot 288



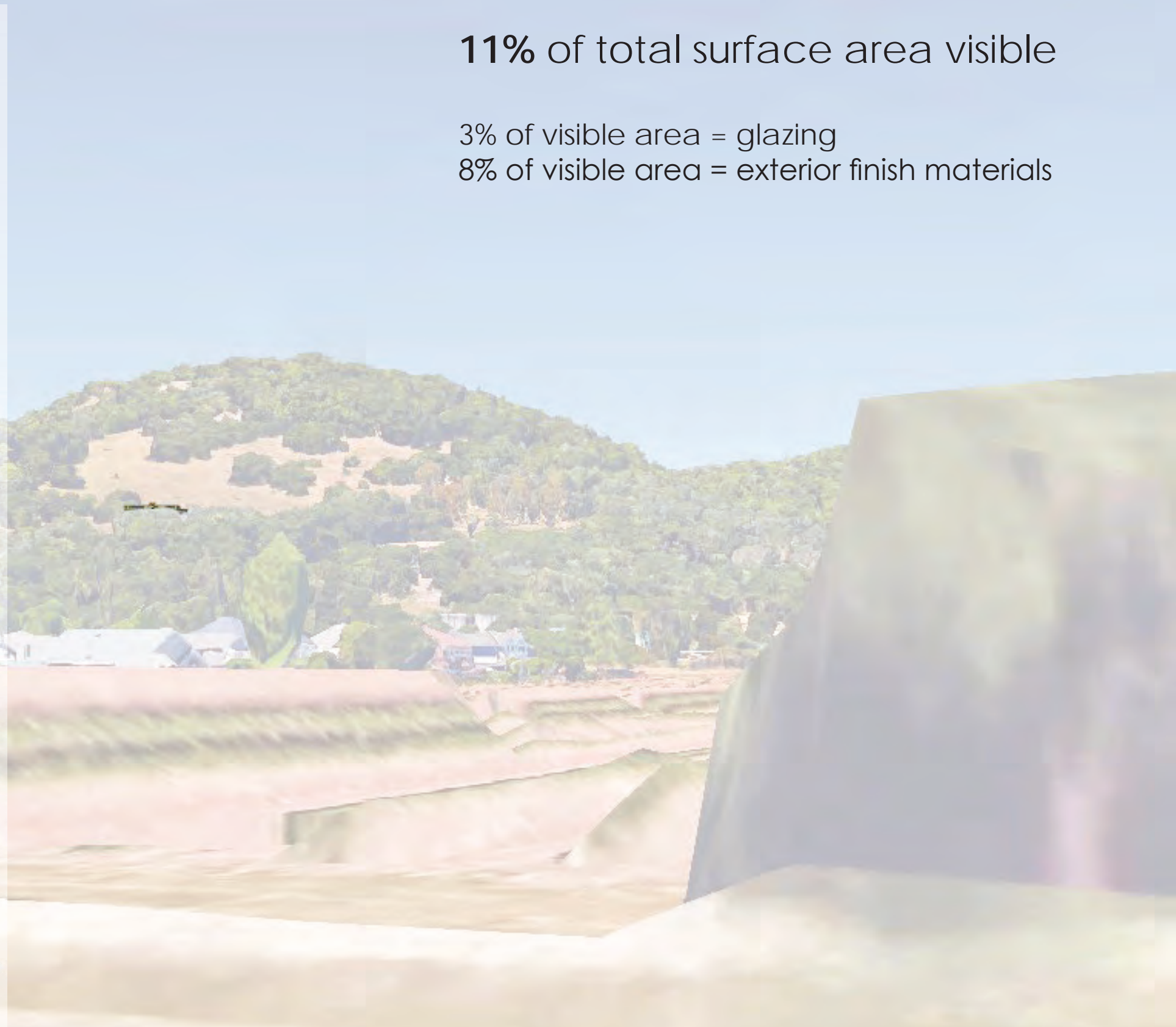
B R A Z I L   S T R E E T   |   L O T   2 2 8



11% of total surface area visible

3% of visible area = glazing

8% of visible area = exterior finish materials



BRAZIL STREET | LOT 228



B R A Z I L   S T R E E T   |   L O T   2 2 8

view from 2nd street towards [80 2nd street east]



BRAZIL STREET | LOT 228

view from 2nd street towards [80 2nd street east]



BRAZIL STREET | LOT 228

view from cherry block vineyard towards [480 brazil street]



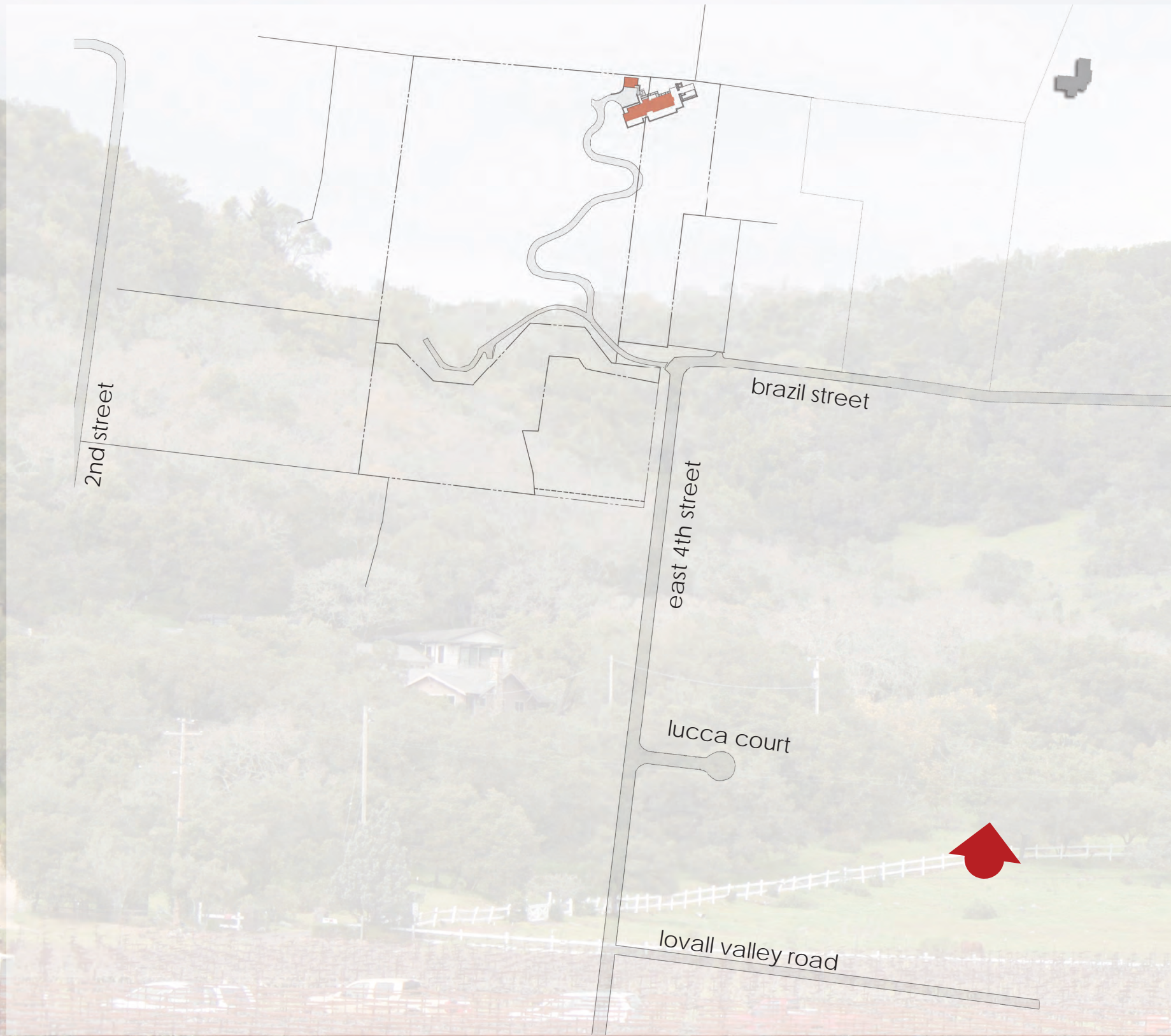
BRAZIL STREET | LOT 228

view from cherry block vineyard towards [480 brazil street]



B R A Z I L   S T R E E T   |   L O T   2 2 8

view from cherry block vineyard towards [570 brazil street]



BRAZIL STREET | LOT 228

view from cherry block vineyard towards [570 brazil street]



B R A Z I L   S T R E E T   |   L O T   2 2 8





BRAZIL STREET | LOT 228

view from cherry block vineyard towards [175 4th street east]



B R A Z I L   S T R E E T   |   L O T   2 2 8

view from cherry block vineyard towards [19087 gehricke road]



BRAZIL STREET | LOT 228

view from cherry block vineyard towards [19087 gehricke road]



B R A Z I L   S T R E E T   |   L O T   2 2 8



BRAZIL STREET | LOT 228

view from cherry block vineyard towards [18423 7th street east]

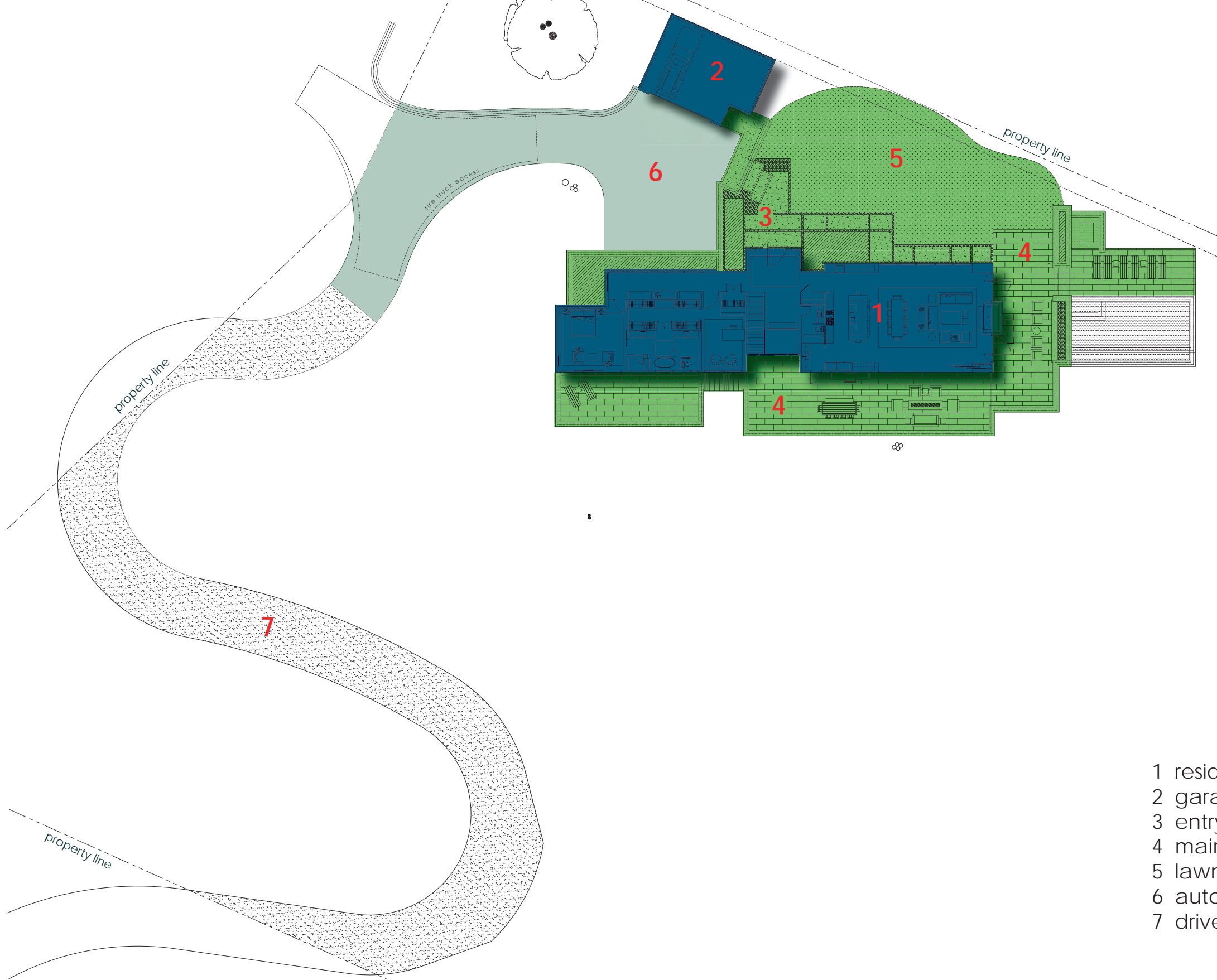


B R A Z I L   S T R E E T   |   L O T   2 2 8



BRAZIL STREET | LOT 228

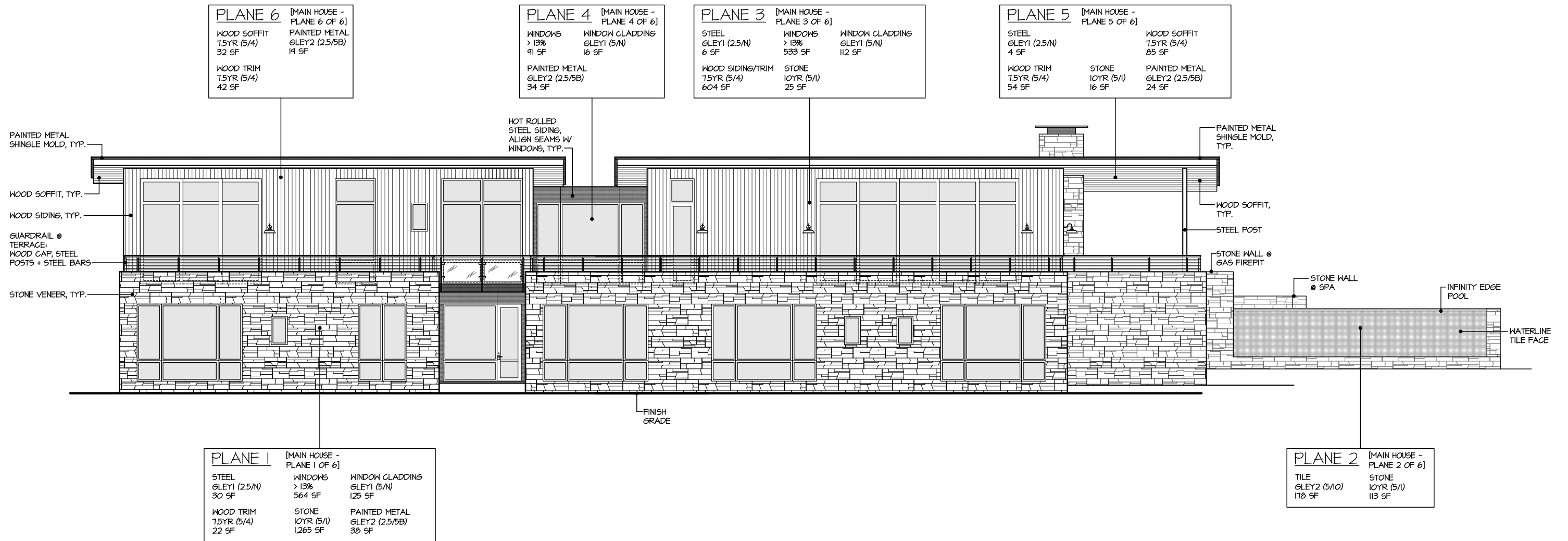
view from cherry block vineyard towards [19060 7th street east]



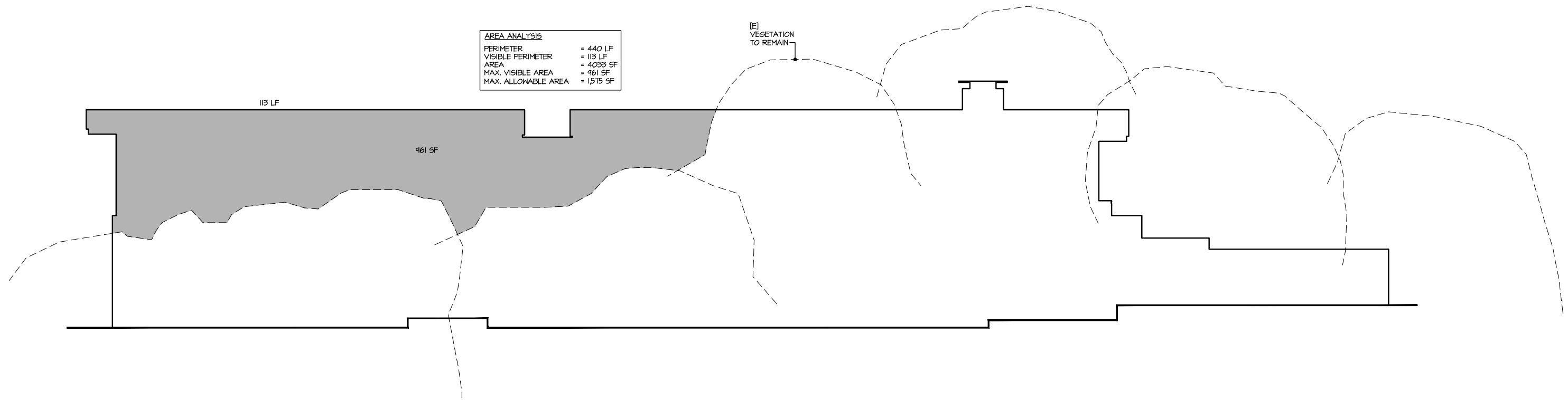
1 residence	= 3,186 sf
2 garage	= 630 sf
3 entry terrace + planters	= 1,416 sf
4 main terrace + pool terrace	= 3,316 sf
5 lawn	= 2,177 sf
6 autocourt	= 2,959 sf
7 driveway	= 4,785 sf

BRAZIL STREET | LOT 228





BRAZIL STREET | LOT 228



BRAZIL STREET | LOT 228

south elevation outline detail



BRAZIL STREET | LOT 228

view from driveway



BRAZIL STREET | LOT 228

view towards auto court



BRAZIL STREET | LOT 228

view towards main terrace + great room + entry



BRAZIL STREET | LOT 228

view towards main terrace + great room + garage





BRAZIL STREET | LOT 228