



1 NORTH ELEVATION
3/32" = 1'-0"



2 EAST ELEVATION
3/32" = 1'-0"

RossDrulisCusenbery

18294
Sonoma Highway
Sonoma
CA 95476
TEL 707 996 8448
FAX 707 996 8542

ARCHITECTURE

HOTEL PROJECT
SONOMA

Sonoma, CA

Kenwood
Investments LLC

REVISIONS		
No.	Description	Date
1		
2		
3		
4		
5		
6		
7		
8		
9		
10		

BASIS OF DESIGN
REPORT

EXTERIOR ELEVATIONS -
NORTH / EAST

Drawn By: Author
Checked By: Checker
Scale:
3/32" = 1'-0"
Date:
2015 / 04 / 10
Project No. Project Number

A3.01
Drawing No.

Not For Construction

If this drawing is not 24" x 36", it is a reduced print - scale accordingly.
All rights reserved. Material may not be reproduced in any form
without permission from RossDrulisCusenbery Architecture, Inc.



① SOUTH ELEVATION
3/32" = 1'-0"



② WEST ELEVATION
3/32" = 1'-0"

RossDrulisCusenbery

18294
Sonoma Highway
Sonoma
CA 95476
TEL 707 996 8448
FAX 707 996 8542

ARCHITECTURE

HOTEL PROJECT SONOMA

Sonoma, CA

Kenwood
Investments LLC

REVISIONS

No.	Description	Date
1		
2		
3		
4		
5		
6		
7		
8		
9		
10		

BASIS OF DESIGN REPORT

Sheet Title

EXTERIOR ELEVATIONS - SOUTH / WEST

Drawn By Author Checked By Checker

Scale:
3/32" = 1'-0"

Date:
2015 / 04 / 10

Project No. Project Number

A3.02
Drawing No.

If this drawing is not 24" x 36", it is a reduced print - scale accordingly.
All rights reserved. Material may not be reproduced in any form
without permission from RossDrulisCusenbery Architecture, Inc.

Not For Construction

RossDrulisCusenbery

18294
Sonoma Highway
Sonoma
CA 95476

TEL 707 996 8448
FAX 707 996 8542

ARCHITECTURE

HOTEL PROJECT
SONOMA

Sonoma, CA

Kenwood
Investments LLC

REVISIONS		
No.	Description	Date

BASIS OF DESIGN
REPORT

Sheet Title
BUILDING SECTIONS

Drawn By: Author	Checked By: Checker
Scale: 3/32" = 1'-0"	
Date: 2015 / 04 / 10	
Project No. Project Number	

A3.51
Drawing No.

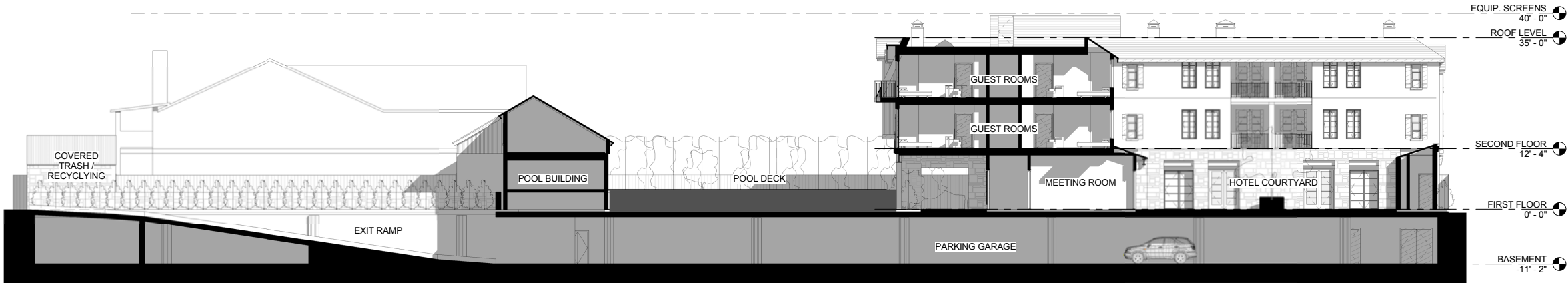
If this drawing is not 24" x 36", it is a reduced print - scale accordingly.
All rights reserved. Material may not be reproduced in any form
without permission from RossDrulisCusenbery Architecture, Inc.



3 BUILDING SECTION- EW- RESTAURANT
3/32" = 1'-0"



1 BUILDING SECTION- EW- HOTEL PLAZA
3/32" = 1'-0"



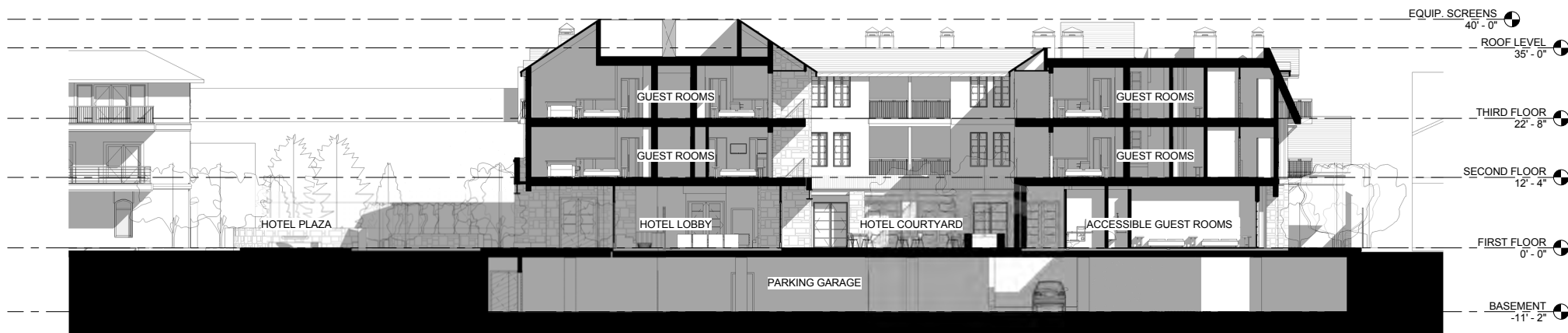
2 BUILDING SECTION- EW- COURTYARD AND POOL DECK
3/32" = 1'-0"

Not For Construction

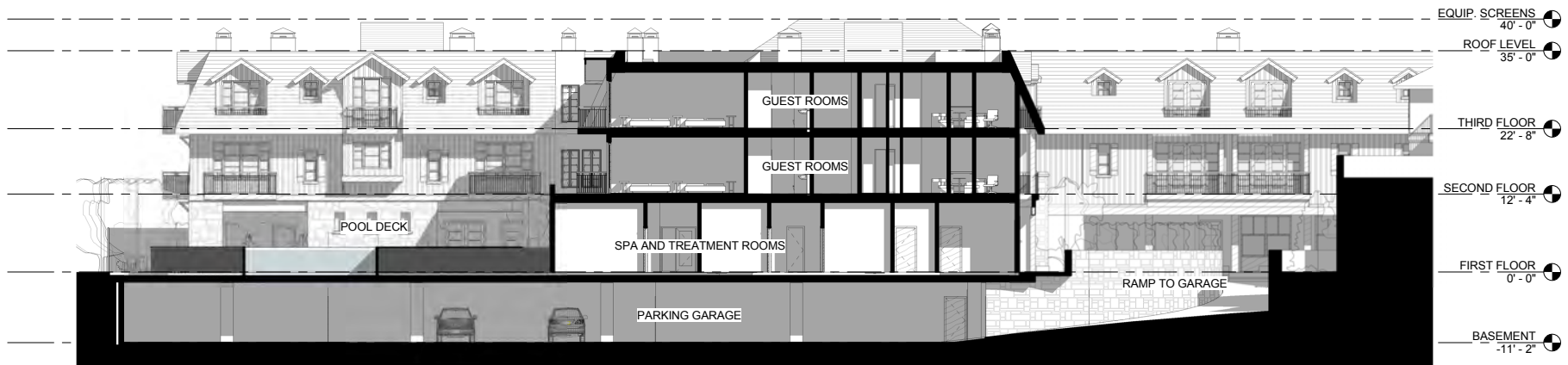
C:\Users\Sharon75\Desktop\Revit\user Files\Sonoma Hotel_Central File_Slides\75.rvt
4/8/2015 3:51:14 PM



② BUILDING SECTION- NS- BUILDING A
3/32" = 1'-0"



① BUILDING SECTION- NS- BUILDING B COURTYARD
3/32" = 1'-0"



③ BUILDING SECTION- NS- POOL DECK
3/32" = 1'-0"

RossDrulisCusenbery

18294
Sonoma Highway
Sonoma
CA 95476

TEL 707 996 8448
FAX 707 996 8542

ARCHITECTURE

HOTEL PROJECT SONOMA

Sonoma, CA

Kenwood
Investments LLC

REVISIONS		
No.	Description	Date
△		
△		
△		
△		
△		
△		
△		

BASIS OF DESIGN REPORT

Sheet Title

BUILDING SECTIONS

Drawn By Author Checked By Checker

Scale:
3/32" = 1'-0"

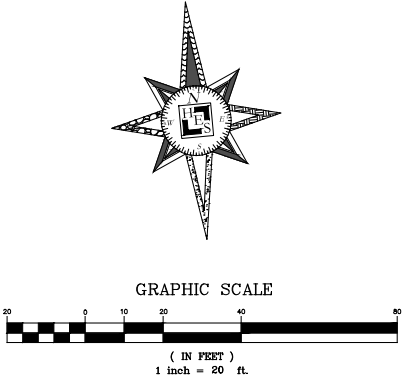
Date:
2015/04/10

Project No. Project Number

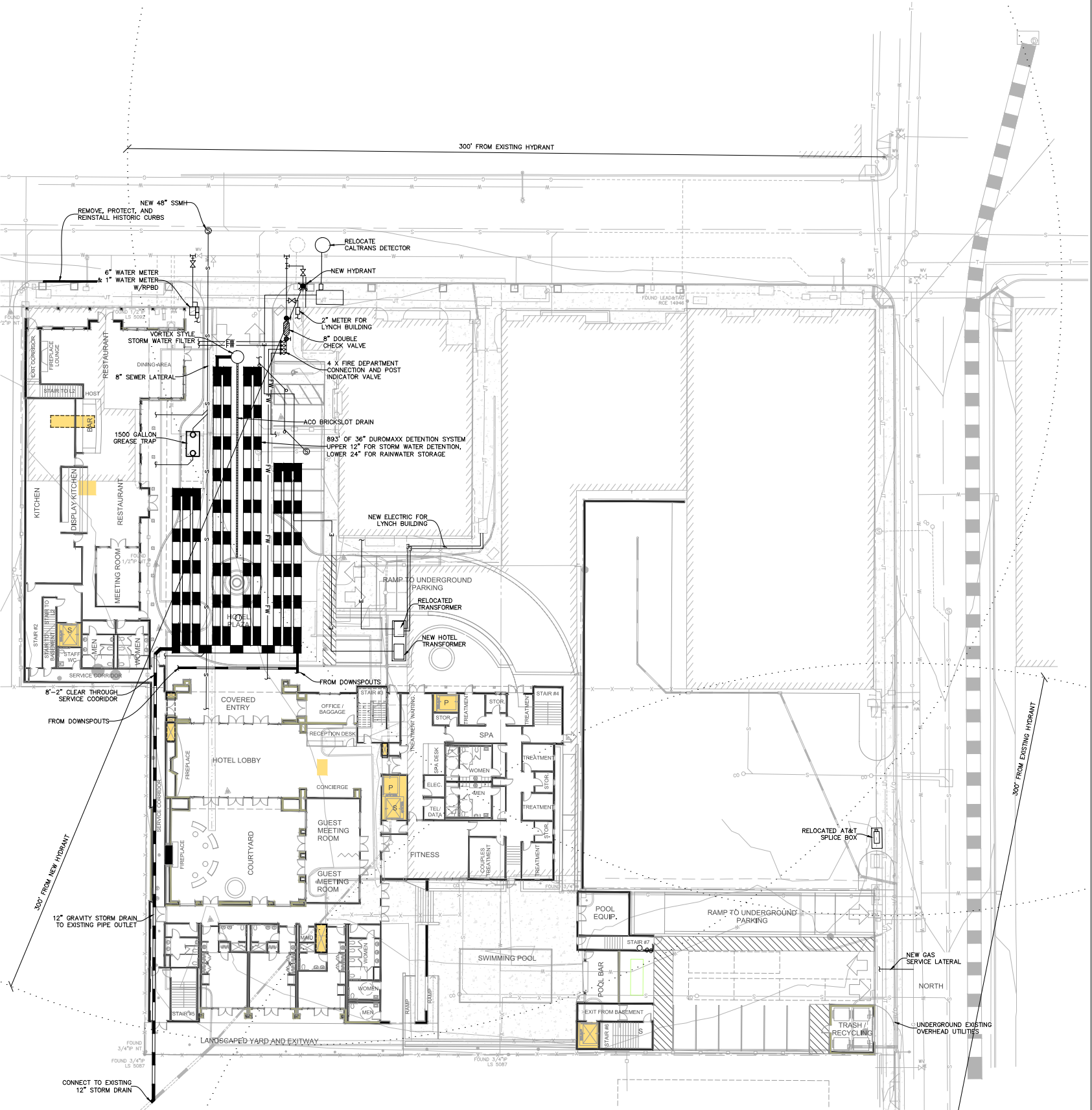
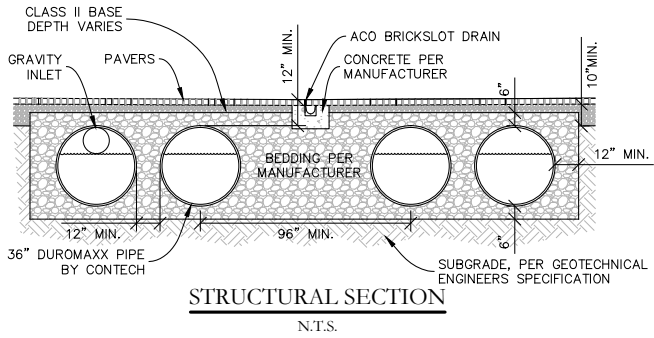
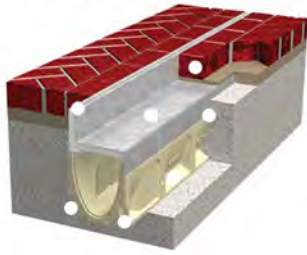
A3.52
Drawing No.

If this drawing is not 24" x 36", it is a reduced print - scale accordingly.
All rights reserved. Material may not be reproduced in any form
without permission from RossDrulisCusenbery Architecture, Inc.

Not For Construction



Brickslot
A discreet, drainage solution for use with brick or stone pavers. The 7/16" slot blends in with the paving joints giving an aesthetic solution. Brickslot uses the KlassikDrain K100 4" (100 mm) wide trench system.



Not For Construction

RossDrulisCusenbe

18294
Sonoma Highway
Sonoma
CA 95476

TEL 707 996 8448
FAX 707 996 8542

ARCHITECTURE

**Huffman Engineering
& Surveying**

537 College Avenue, Suite A
Santa Rosa, Ca. 95404

P: (707) 542-6559
www.huffmanengineering.net

**HOTEL PROJECT
SONOMA**

Sonoma, CA

**Kenwood
Investments LLC**

REVISIONS		
No.	Description	Date
1		
2		
3		
4		
5		
6		
7		
8		
9		
10		

**BASIS OF DESIGN
REPORT**

Sheet Title

**FIRST FLOOR
UTILITIES**

Drawn By: SMA Checked By: CRH

Scale: 1" = 20'

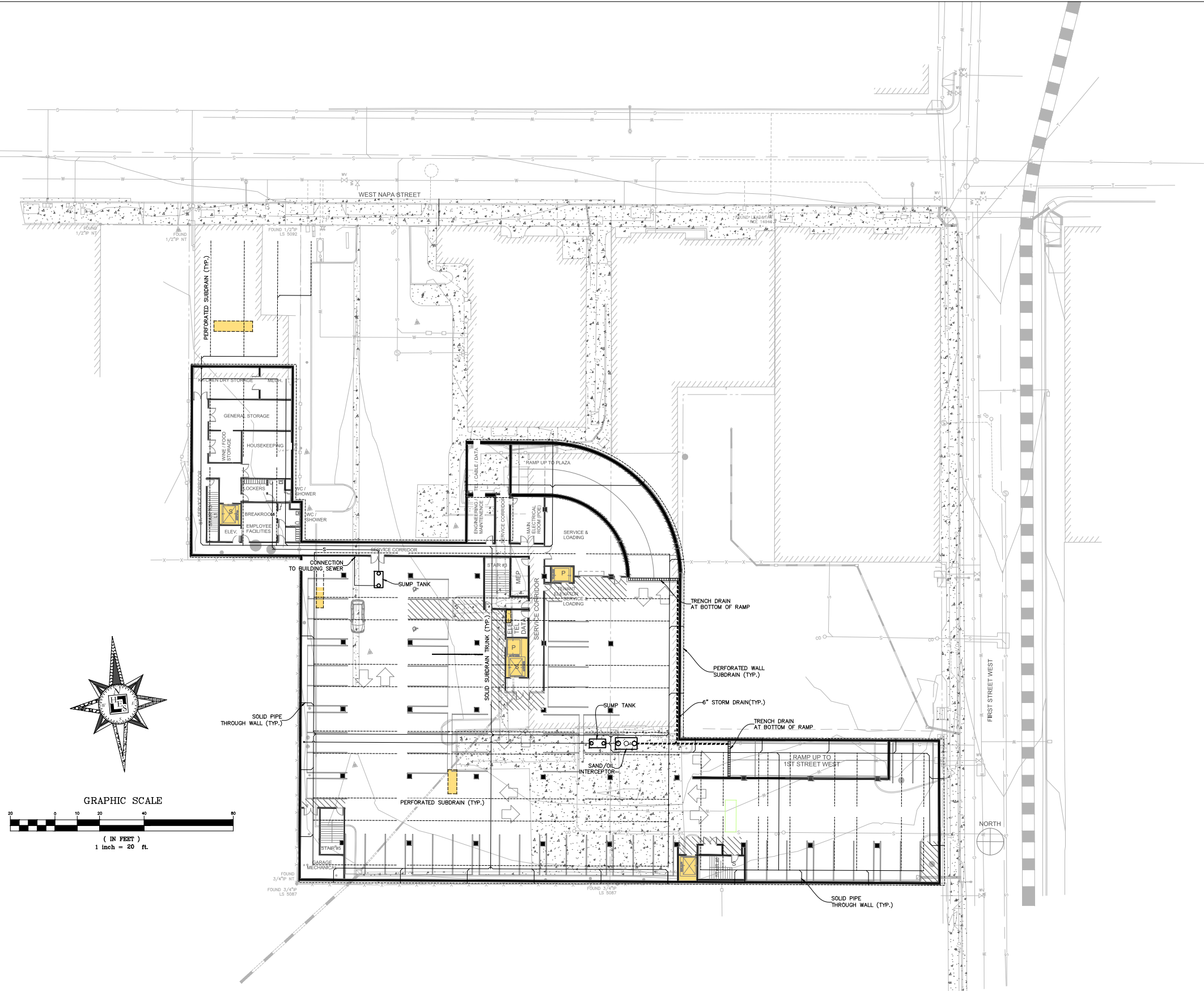
Date:
2015 / 04 / 08

Project No: 15-006

CSK1
Drawing No.

If this drawing is not 24" x 36", it is a reduced print - scale accordingly.
All rights reserved. Material may not be reproduced in any form
without permission from RossDrulisCusenbe Architecture, Inc.

M:\Projects\SONOMA CA Sonoma Hotel\Correspondence\Fig Out\0150323_Constraints_Tilefoot Rev A\AutoCAD\0150323_Sonoma Hotel_Central Floor.dwg 3/2/2015 7:47:28 PM



RossDrulisCusenbery

18294
Sonoma Highway
Sonoma
CA 95476

TEL 707 996 8448
FAX 707 996 8542

ARCHITECTURE

**Huffman Engineering
& Surveying**

537 College Avenue, Suite A
Santa Rosa, Ca. 95404

P: (707) 542-6559
www.huffmanengineering.net

HOTEL PROJECT SONOMA

Sonoma, CA

**Kenwood
Investments LLC**

REVISIONS		
No.	Description	Date
1		
2		
3		
4		
5		
6		
7		
8		
9		
10		

BASIS OF DESIGN REPORT

Sheet Title GARAGE/BASEMENT UTILITIES

Drawn By SMA Checked By CRH

Scale: 1" = 20'

Date:
2015 / 04 / 07

Project No. 15-006

CSK2
Drawing No.

If this drawing is not 24" x 36", it is a reduced print - scale accordingly.
All rights reserved. Material may not be reproduced in any form
without permission from RossDrulisCusenbery Architecture, Inc.

Not For Construction

HOTEL PROJECT
SONOMA

Sonoma, CA

Kenwood
Investments LLC

REVISIONS

No.	Description	Date
1		
2		
3		
4		
5		
6		
7		
8		
9		
10		

BASIS OF DESIGN
REPORT

Sheet Title

FOUNDATION PLAN

Drawn By Author Checked By Checker

Scale:
1/16" = 1'-0"

Date:
2015 / 03 / 31

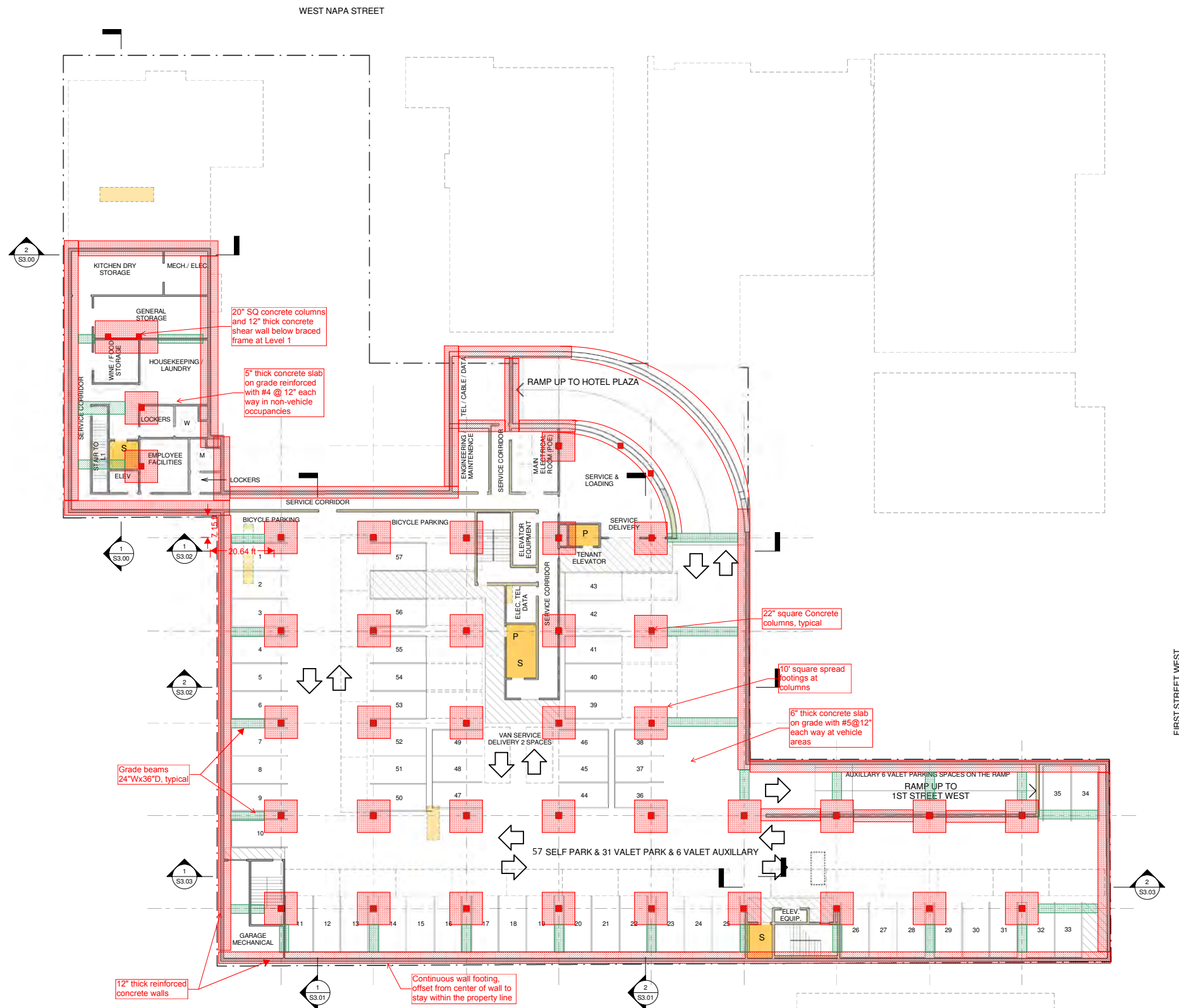
Project No. Project Number

S2.00
Drawing No.

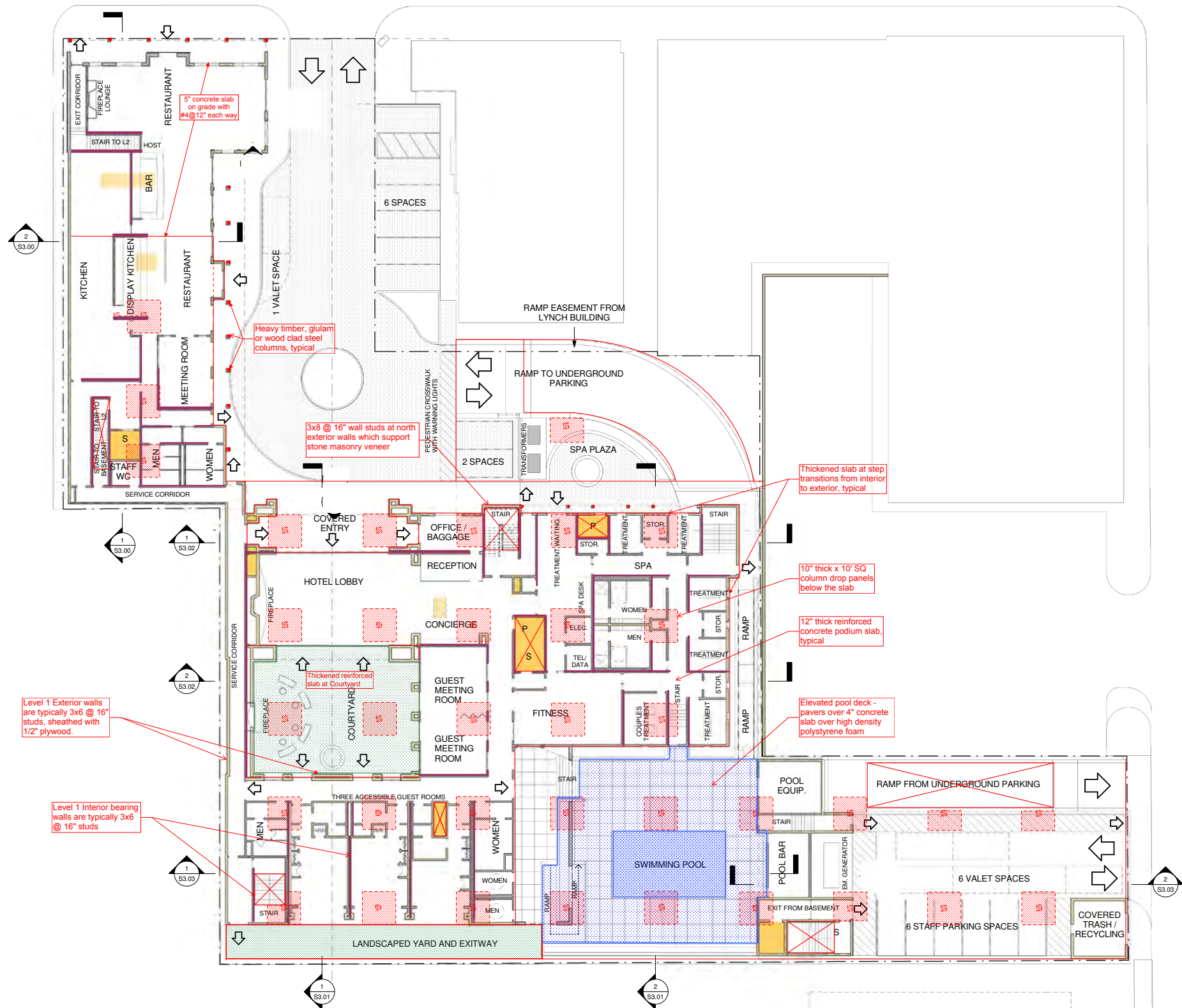
If this drawing is not 24"x36", it is a reduced print - scale accordingly.
All rights reserved. Material may not be reproduced in any form
without permission from RossDrulisCusenbery Architecture, Inc.

4/20/15 4:51 PM

1 FOUNDATION PLAN
1/16" = 1'-0"



Not For Construction



1 FIRST FLOOR PODIUM PLAN
1/16" = 1'-0"

RossDrulisCusenbery

18294
Sonoma Highway
Sonoma
CA 95476

TEL 707 996 8448
FAX 707 996 8542

ARCHITECTURE

WALTER P MOORE

WALTER P. MOORE AND ASSOCIATES, INC.
208 MARKET STREET, SUITE 210
SAN FRANCISCO, CALIFORNIA 94105-2818
PHONE: 415.983.8300 FAX: 415.983.8350

HOTEL PROJECT
SONOMA

Sonoma, CA

Kenwood
Investments LLC

REVISIONS		
No.	Description	Date
1		
2		
3		
4		
5		
6		
7		
8		
9		
10		

BASIS OF DESIGN
REPORT

Sheet Title

FIRST FLOOR PODIUM
PLAN

Drawn By Author Checked By Checker

Scale:
1/16" = 1'-0"

Date:
2015 / 03 / 31

Project No. Project Number

S2.01
Drawing No.

If this drawing is not 24" x 36", it is a reduced print - scale accordingly.
All rights reserved. Material may not be reproduced in any form
without permission from RossDrulisCusenbery Architecture, Inc.

Not For Construction

HOTEL PROJECT
SONOMA

Sonoma, CA

Kenwood
Investments LLC

REVISIONS		
No.	Description	Date
1		
2		
3		
4		
5		
6		
7		
8		
9		
10		

BASIS OF DESIGN
REPORT

Sheet Title

FIRST FLOOR SHEAR
WALL PLAN

Drawn By Author Checked By Checker

Scale:
1/16" = 1'-0"

Date:
2015 / 03 / 31

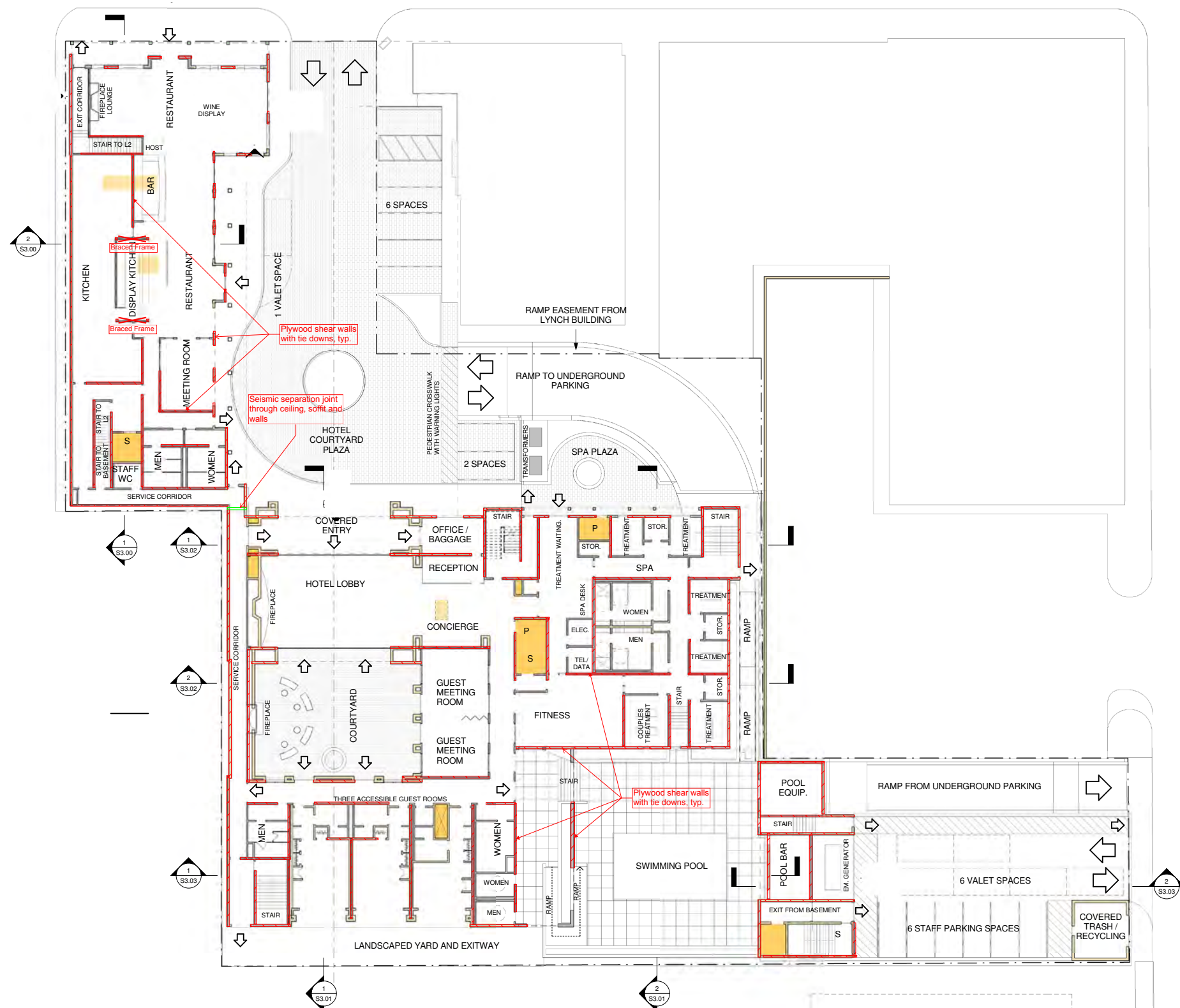
Project No. Project Number

S2.01a
Drawing No.

If this drawing is not 24" x 36", it is a reduced print - scale accordingly.
All rights reserved. Material may not be reproduced in any form
without permission from RossDrulisCusenbery Architecture, Inc.

4/8/2016 4:52:23 PM

1 FIRST FLOOR SHERA WALL PLAN
1/16" = 1'-0"



Not For Construction



1 SECOND FLOOR FRAMING PLAN
1/16" = 1'-0"

Not For Construction

RossDrulisCusenbery

18294
Sonoma Highway
Sonoma
CA 95476

TEL 707 996 8448
FAX 707 996 8542

ARCHITECTURE

WALTER P MOORE

WALTER P. MOORE AND ASSOCIATES, INC.
595 MARKET STREET, SUITE 2100
SAN FRANCISCO, CALIFORNIA 94108-2816
PHONE: 415.955.6500 FAX: 415.955.6550

HOTEL PROJECT
SONOMA

Sonoma, CA

Kenwood
Investments LLC

REVISIONS

No.	Description	Date
1		
2		
3		
4		
5		
6		
7		
8		
9		
10		

BASIS OF DESIGN
REPORT

Sheet Title

SECOND FLOOR
FRAMING PLAN

Drawn By: Author Checked By: Checker

Scale:
1/16" = 1'-0"

Date:
2015 / 03 / 31

Project No. Project Number

S2.02
Drawing No.

If this drawing is not 24" x 36", it is a reduced print - scale accordingly.
All rights reserved. Material may not be reproduced in any form
without permission from RossDrulisCusenbery Architecture, Inc.