

RossDrulisCusenbery

18294
Sonoma Highway
Sonoma
CA 95476

TEL 707 996 8448
FAX 707 996 8542

ARCHITECTURE

WALTER P MOORE

WALTER P. MOORE AND ASSOCIATES, INC.
595 MARKET STREET, SUITE 2100
SAN FRANCISCO, CALIFORNIA 94105-2818
PHONE: 415.955.6300 FAX: 415.955.6350

HOTEL PROJECT
SONOMA

Sonoma, CA

Kenwood
Investments LLC

REVISIONS		
No.	Description	Date
1		
2		
3		
4		
5		
6		
7		
8		
9		
10		

BASIS OF DESIGN
REPORT

Sheet Title

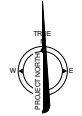
SECOND FLOOR SHEAR
WALL PLAN

Drawn By Author Checked By Checker

Scale:
1/16" = 1'-0"

Date:
2015 / 03 / 31

Project No. Project Number



S2.02a

Drawing No.

Not For Construction



1 THIRD FLOOR FRAMING PLAN
1/16" = 1'-0"

Not For Construction

RossDrulisCusenbery

18294
Sonoma Highway
Sonoma
CA 95476

TEL 707 996 8448
FAX 707 996 8542

ARCHITECTURE

WALTER P MOORE

WALTER P. MOORE AND ASSOCIATES, INC.
595 MARKET STREET, SUITE 2100
SAN FRANCISCO, CALIFORNIA 94105-2816
PHONE: 415.965.6500 FAX: 415.965.6550

HOTEL PROJECT
SONOMA

Sonoma, CA

Kenwood
Investments LLC

REVISIONS

No.	Description	Date
1		
2		
3		
4		
5		
6		
7		
8		
9		
10		

BASIS OF DESIGN
REPORT

Sheet Title

THIRD FLOOR FRAMING
PLAN

Drawn By: Author

Checked By: Checker

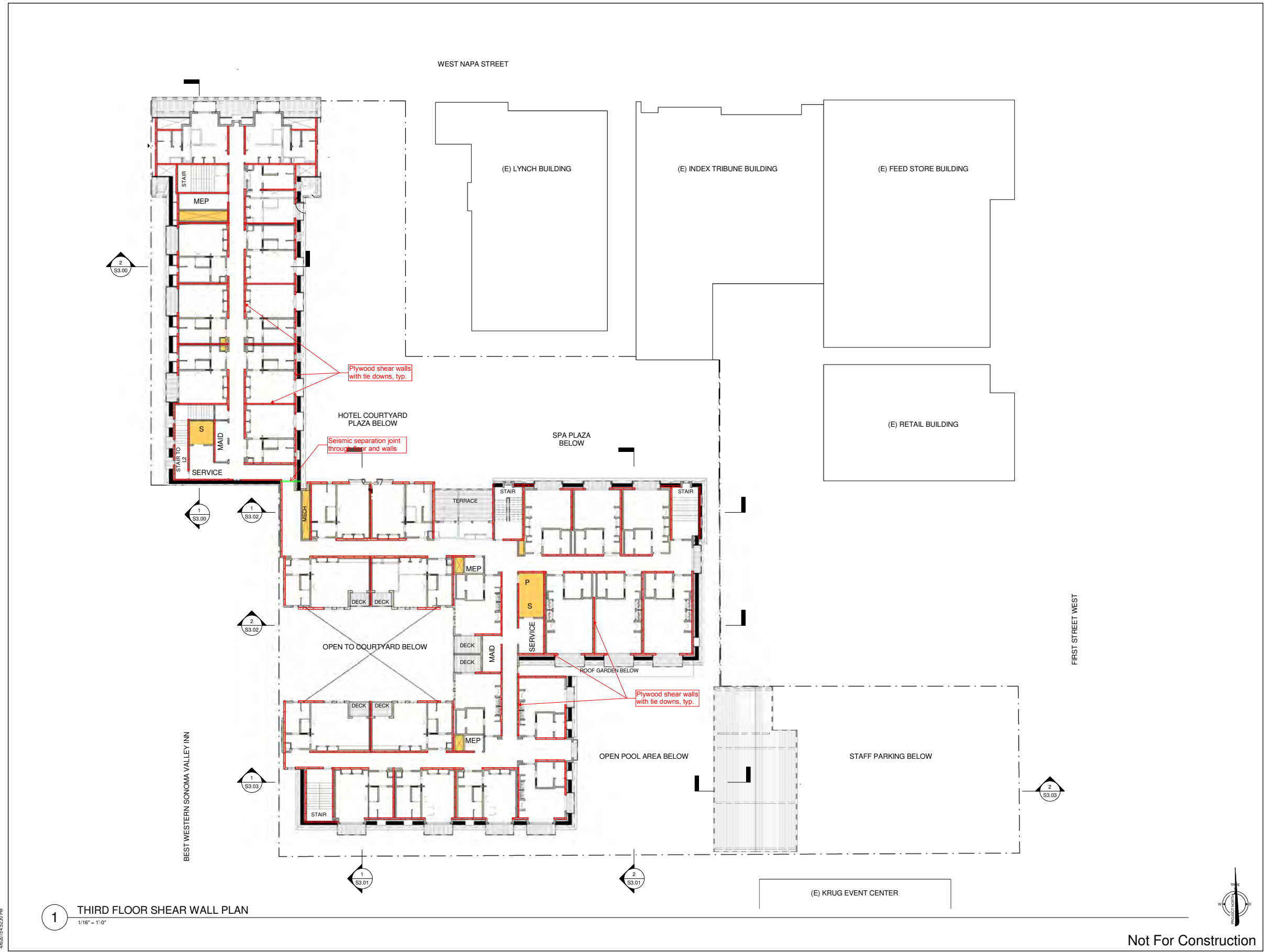
Scale:
1/16" = 1'-0"

Date:
2015 / 03 / 31

Project No. Project Number

S2.03
Drawing No.

If this drawing is not 24" x 36", it is a reduced print. Scale accordingly.
All rights reserved. Material may not be reproduced in any form
without permission from RossDrulisCusenbery Architecture, Inc.



RossDrulisCusenbery
 18294 Sonoma Highway
 Sonoma, CA 95476
 TEL 707 996 8448
 FAX 707 996 8542

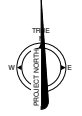
ARCHITECTURE
WALTER P MOORE
 WALTER P. MOORE AND ASSOCIATES, INC.
 595 MARKET STREET, SUITE 2100
 SAN FRANCISCO, CALIFORNIA 94105-2810
 PHONE: 415.965.6550 FAX: 415.965.6550

HOTEL PROJECT SONOMA
 Sonoma, CA
 Kenwood Investments LLC

REVISIONS		
No.	Description	Date
1		
2		
3		
4		
5		
6		
7		
8		
9		
10		

BASIS OF DESIGN REPORT
 Sheet Title
THIRD FLOOR SHEAR WALL PLAN

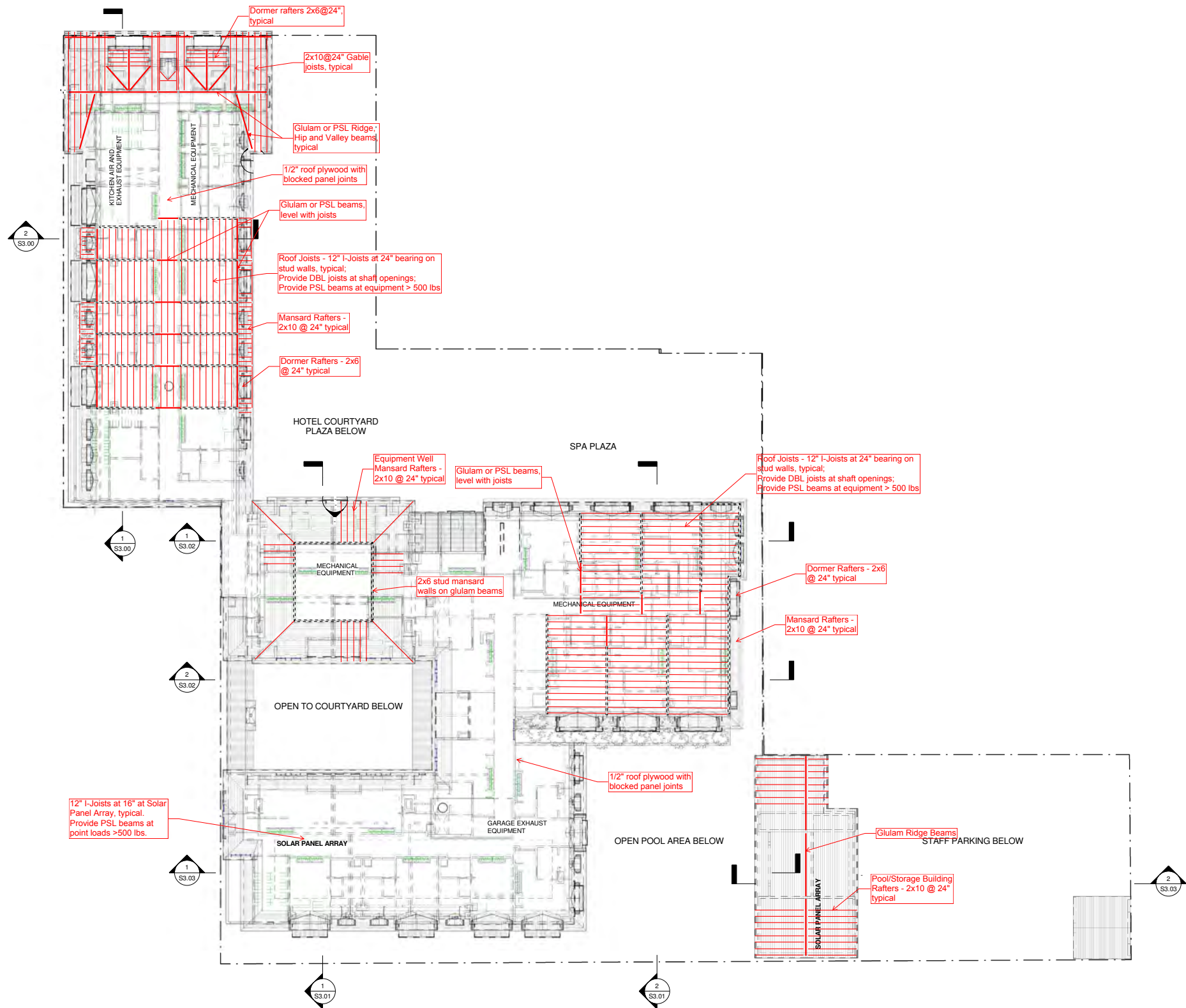
Drawn By Author Checked By Checker
 Scale:
 1/16" = 1'-0"
 Date:
 2015 / 03 / 31
 Project No. Project Number



S2.03a
 Drawing No.

Not For Construction

If this drawing is not 24" x 36" it is a reduced print - scale accordingly.
 All rights reserved. No part may be reproduced in any form without permission from RossDrulisCusenbery Architecture, Inc.



1 ROOF FRAMING PLAN
1/16" = 1'-0"

RossDrulisCusenbery

18294
Sonoma Highway
Sonoma
CA 95476

TEL 707 996 8448
FAX 707 996 8542

ARCHITECTURE

WALTER P MOORE

WALTER P. MOORE AND ASSOCIATES, INC.
598 MARKET STREET, SUITE 2100
SAN FRANCISCO, CALIFORNIA 94105.2818
PHONE: 415.969.6500 FAX: 415.969.6550

HOTEL PROJECT
SONOMA

Sonoma, CA

Kenwood
Investments LLC

REVISIONS		
No.	Description	Date
1		
2		
3		
4		
5		
6		
7		
8		
9		
10		

BASIS OF DESIGN
REPORT

Sheet Title

ROOF FRAMING PLAN

Drawn By: Author Checked By: Checker

Scale:
1/16" = 1'-0"

Date:
2015 / 03 / 31

Project No. Project Number

S2.04
Drawing No.

If this drawing is not 24" x 36", it is a reduced print - scale accordingly.
All rights reserved. Material may not be reproduced in any form
without permission from RossDrulisCusenbery Architecture, Inc.



Not For Construction

HOTEL PROJECT
SONOMA

Sonoma, CA

Kenwood
Investments LLC

REVISIONS

No.	Description	Date
△		
△		
△		
△		
△		
△		
△		
△		

BASIS OF DESIGN
REPORT

Sheet Title

BUILDING SECTIONS

Drawn By: Author Checked By: Checker

Scale:
1/8" = 1'-0"

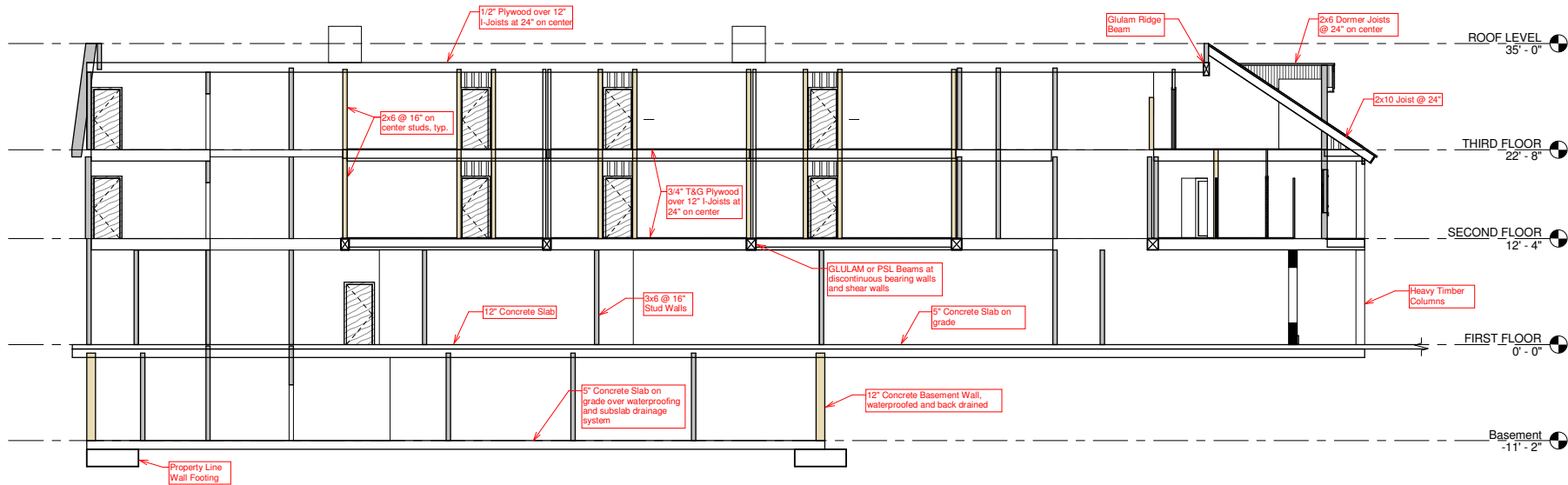
Date:
2015 / 03 / 31

Project No. Project Number

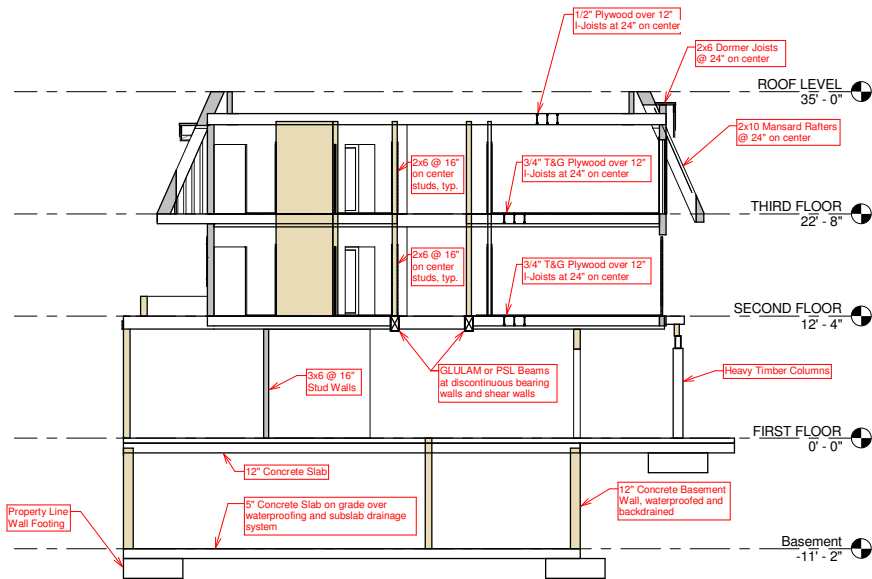
S3.00

Drawing No.

If this drawing is not 24" x 36", it is a reduced print - scale accordingly.
All rights reserved. Material may not be reproduced in any form
without permission from RossDrulisCusenbery Architecture, Inc.

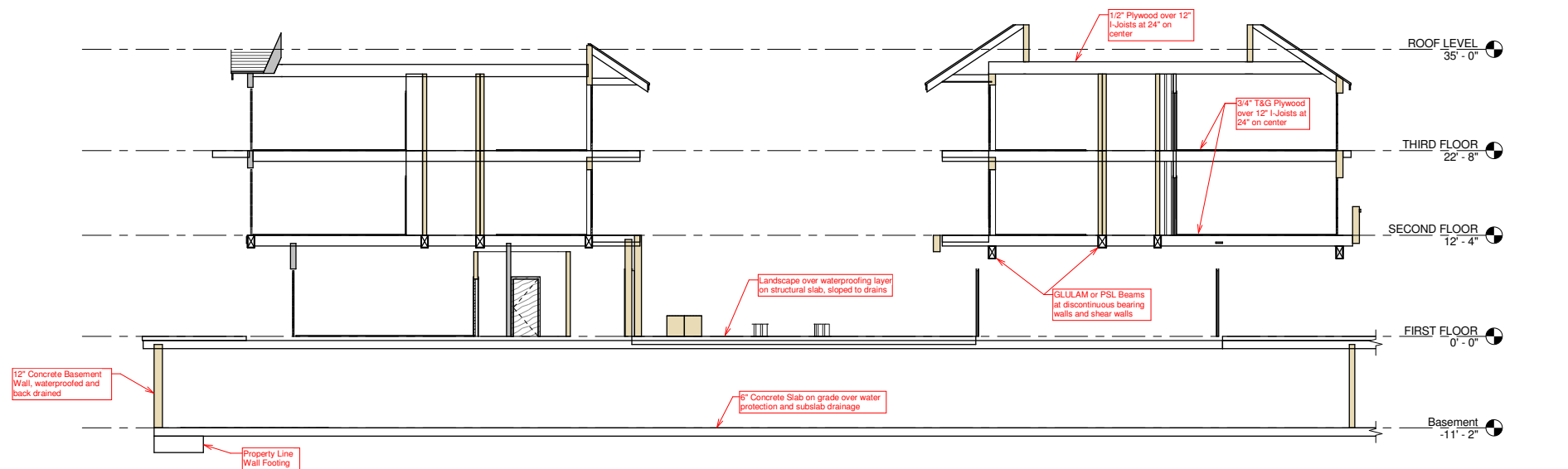


1 BUILDING SECTION
1/8" = 1'-0"

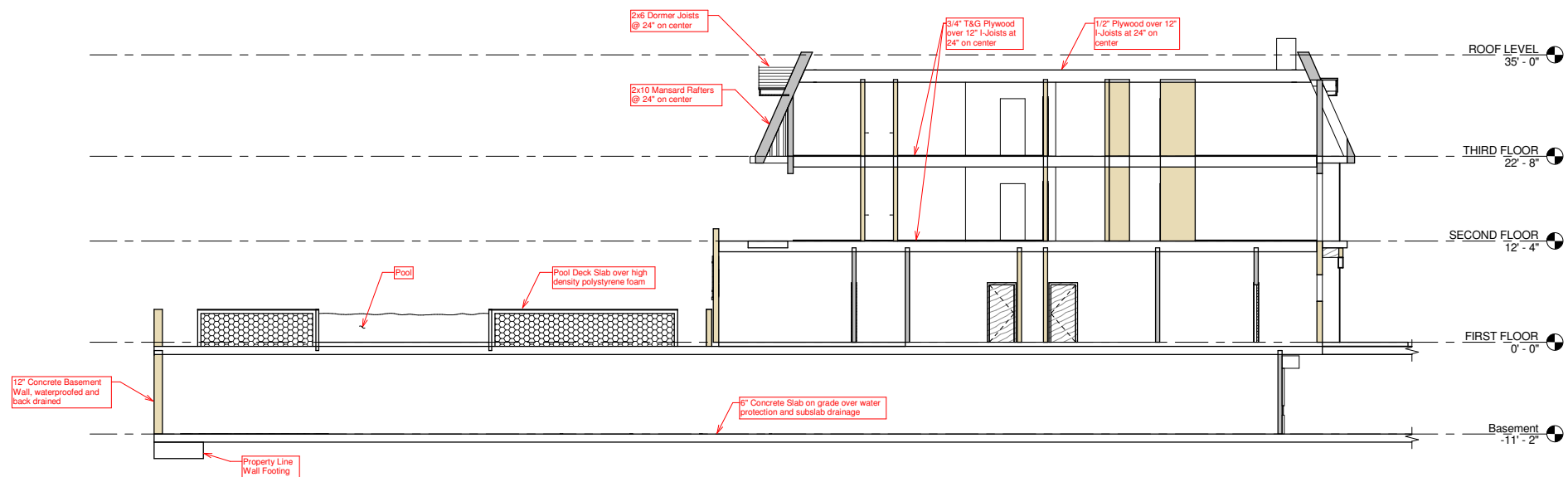


2 BUILDING SECTION
1/8" = 1'-0"

Not For Construction



1 BUILDING SECTION
1/8" = 1'-0"



2 BUILDING SECTION
1/8" = 1'-0"

RossDrulisCusenbery

18294
Sonoma Highway
Sonoma
CA 95476
TEL 707 996 8448
FAX 707 996 8542

ARCHITECTURE

WALTER P MOORE

WALTER P. MOORE AND ASSOCIATES, INC.
500 MARKET STREET, SUITE 5100
SAN FRANCISCO, CALIFORNIA 94105.2810
PHONE: 415.963.6300 FAX: 415.963.6350

HOTEL PROJECT
SONOMA

Sonoma, CA

Kenwood
Investments LLC

REVISIONS		
No.	Description	Date
△		
△		
△		
△		
△		
△		
△		
△		

BASIS OF DESIGN
REPORT

Sheet Title

BUILDING SECTIONS

Drawn By Author Checked By Checker

Scale:
1/8" = 1'-0"

Date:
2015 / 03 / 31

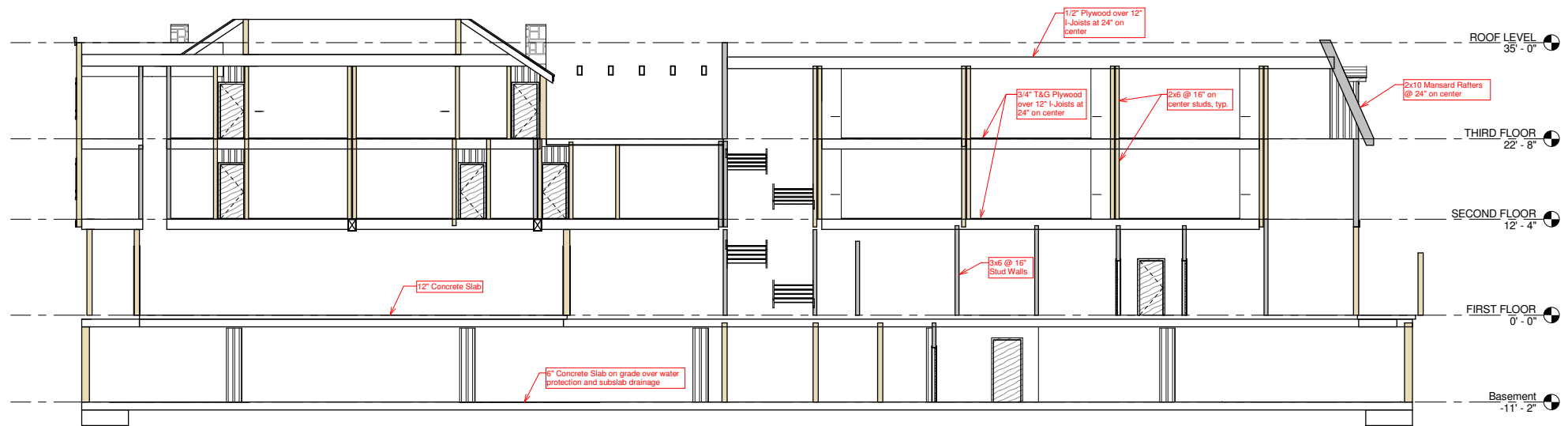
Project No. Project Number

S3.01

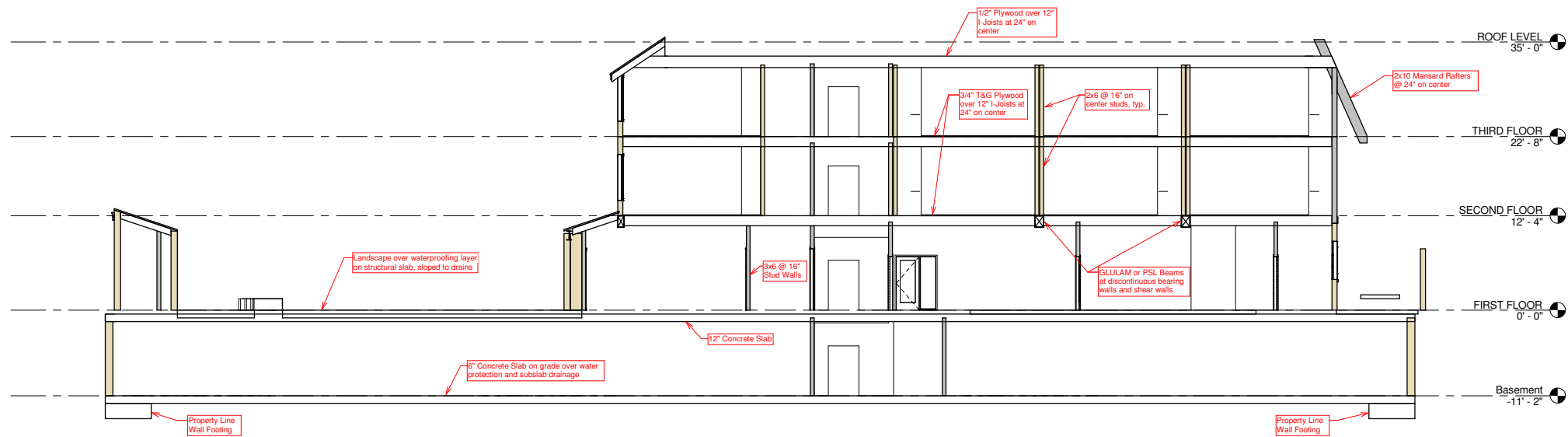
Drawing No.

If this drawing is not 24" x 36", it is a reduced print - scale accordingly.
All rights reserved. Material may not be reproduced in any form
without permission from RossDrulisCusenbery Architecture, Inc.

Not For Construction



1 BUILDING SECTION
1/8" = 1'-0"



2 BUILDING SECTION
1/8" = 1'-0"

RossDrulisCusenbery

18294
Sonoma Highway
Sonoma
CA 95476
TEL 707 996 8448
FAX 707 996 8542

ARCHITECTURE

WALTER P MOORE

WALTER P. MOORE AND ASSOCIATES, INC.
888 MARKET STREET, SUITE #100
SAN FRANCISCO, CALIFORNIA 94105.2818
PHONE: 415.965.6900 FAX: 415.965.6950

HOTEL PROJECT
SONOMA

Sonoma, CA

Kenwood
Investments LLC

REVISIONS		
No.	Description	Date
1		
2		
3		
4		
5		
6		
7		
8		
9		
10		

BASIS OF DESIGN
REPORT

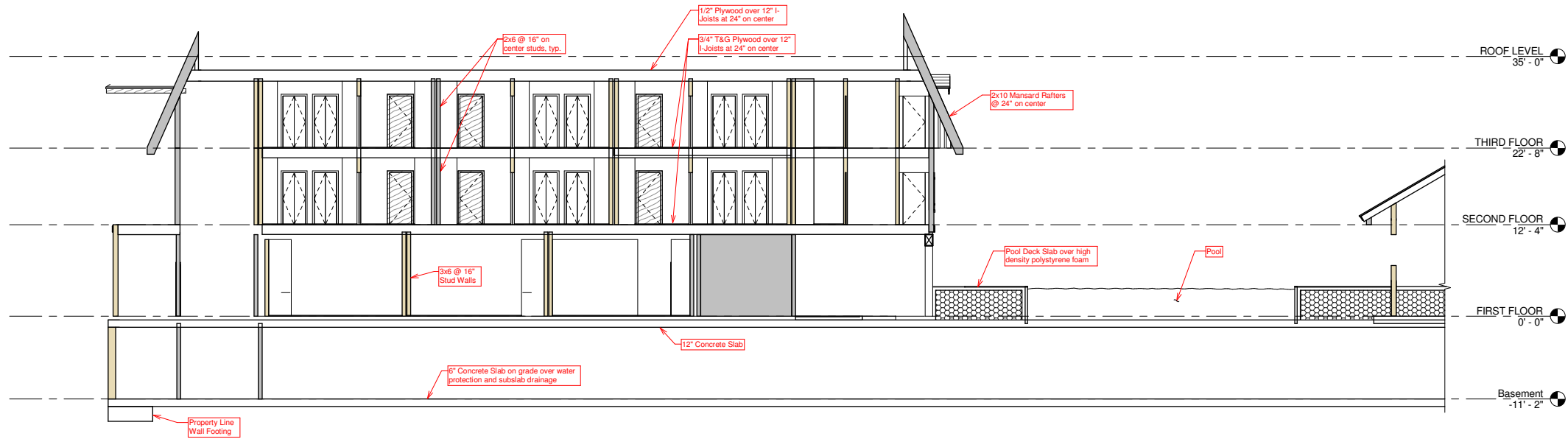
Sheet Title
BUILDING SECTIONS

Drawn By Author Checked By Checker
Scale:
1/8" = 1'-0"
Date:
2015 / 03 / 31
Project No. Project Number

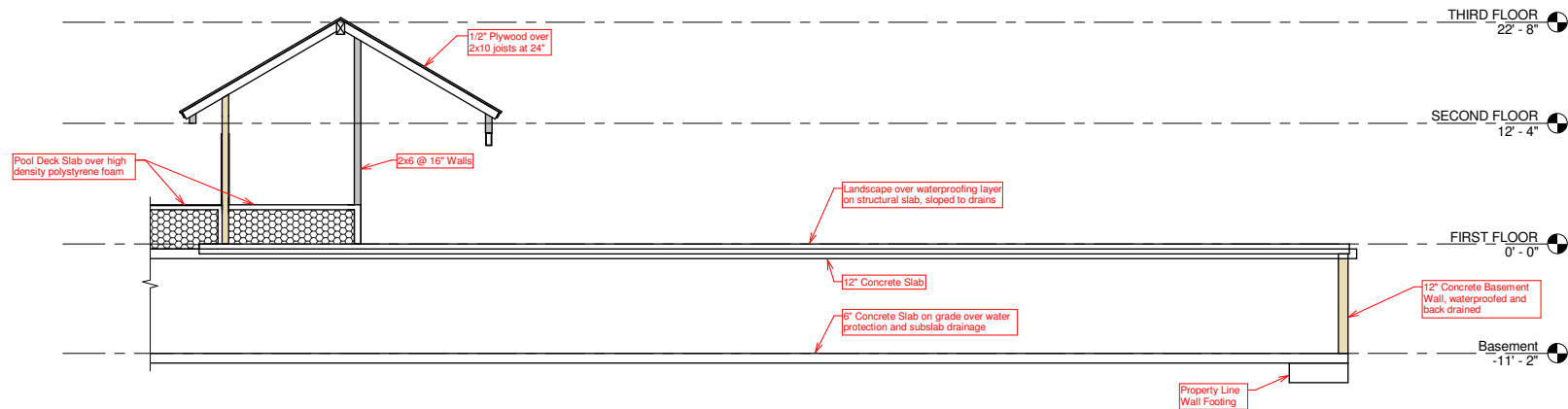
S3.02
Drawing No.

Not For Construction

If this drawing is not 24" x 36", it is a reduced print. scale accordingly.
All rights reserved. Material may not be reproduced in any form
without permission from RossDrulisCusenbery Architecture, Inc.



1 BUILDING SECTION
1/8" = 1'-0"



2 BUILDING SECTION
1/8" = 1'-0"

RossDrulisCusenbery

18294
Sonoma Highway
Sonoma
CA 95476

TEL 707 996 8448
FAX 707 996 8542

ARCHITECTURE

WALTER P MOORE

WALTER P. MOORE AND ASSOCIATES, INC.
598 MARKET STREET, SUITE #100
SAN FRANCISCO, CALIFORNIA 94105-2818
PHONE: 415.985.6500 FAX: 415.985.6550

HOTEL PROJECT
SONOMA

Sonoma, CA

Kenwood
Investments LLC

REVISIONS

No.	Description	Date
1		
2		
3		
4		
5		
6		
7		
8		
9		
10		

BASIS OF DESIGN
REPORT

Sheet Title

BUILDING SECTIONS

Drawn By: Author Checked By: Checker

Scale:
1/8" = 1'-0"

Date:
2015 / 03 / 31

Project No. Project Number

S3.03

Drawing No.

If this drawing is not 24" x 36", it is a reduced print - scale accordingly.
All rights reserved. Material may not be reproduced in any form
without permission from RossDrulisCusenbery Architecture, Inc.

Not For Construction

RossDrulisCusenbery

18294
Sonoma Highway
Sonoma
CA 95476

TEL 707 996 8448
FAX 707 996 8542

ARCHITECTURE

WALTER P MOORE

WALTER P. MOORE AND ASSOCIATES, INC.
895 MARKET STREET, SUITE #100
SAN FRANCISCO, CALIFORNIA 94108.2818
PHONE: 415.983.6300 FAX: 415.983.6350

HOTEL PROJECT
SONOMA

Sonoma, CA

Kenwood
Investments LLC

REVISIONS		
No.	Description	Date
△		
△		
△		
△		
△		
△		
△		
△		

BASIS OF DESIGN
REPORT

Sheet Title
TYPICAL PODIUM SLAB
SECTION

Drawn By AuthorChecked By Checker

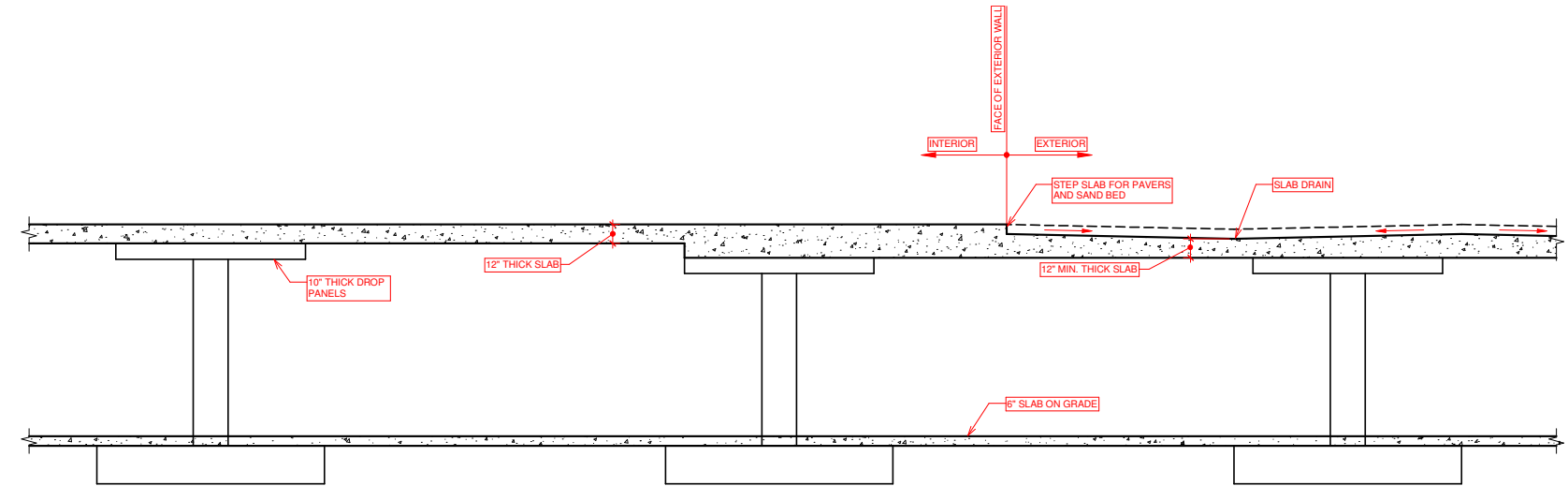
Scale:
1/4" = 1'-0"

Date:
2015 / 03 / 31

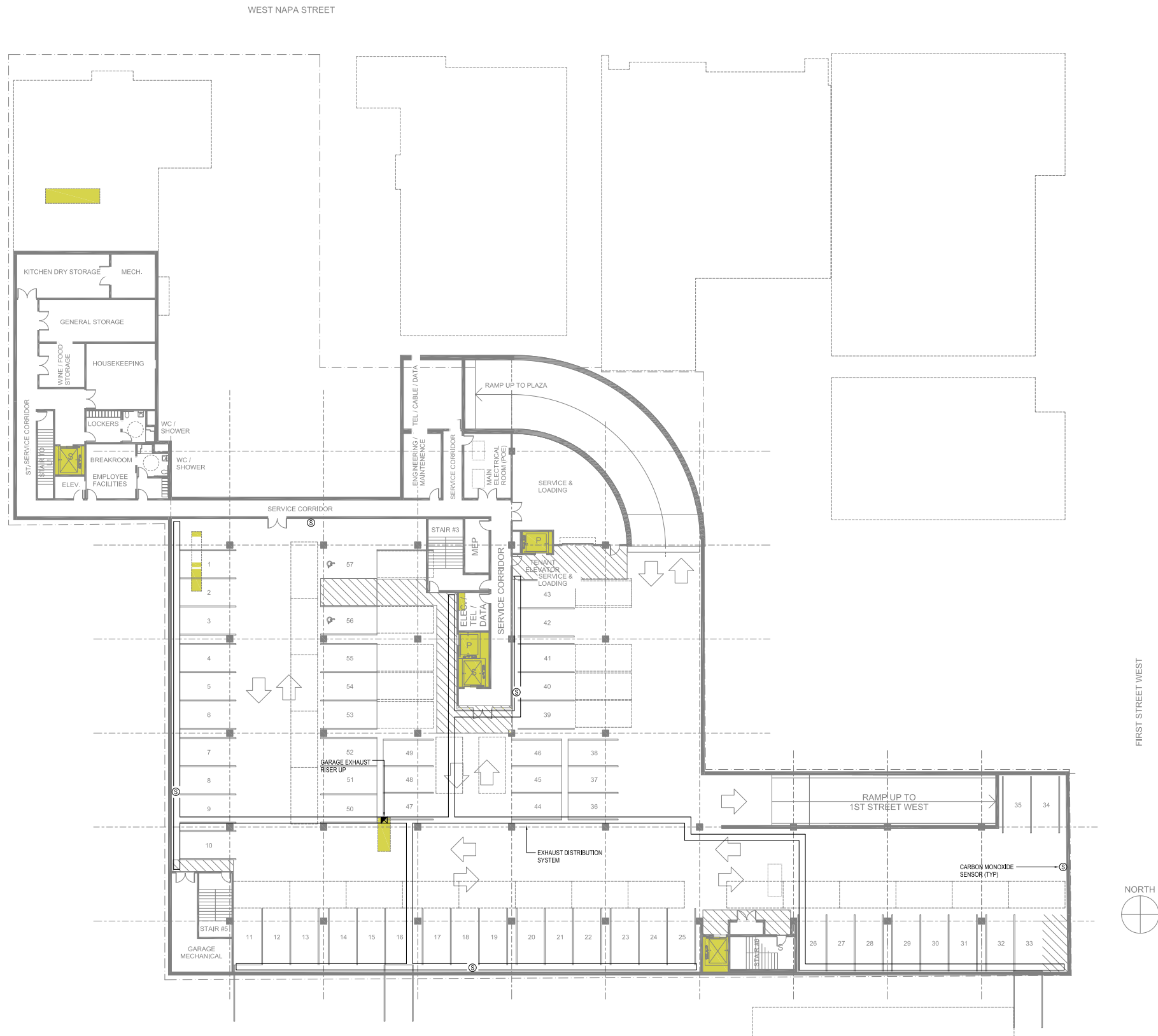
Project No. Project Number

S3.04
Drawing No.

If this drawing is not 24" x 36", it is a reduced print - scale accordingly.
All rights reserved. Material may not be reproduced in any form
without permission from RossDrulisCusenbery Architecture, Inc.



1 TYPICAL PODIUM SLAB SECTION
1/4" = 1'-0"



1 GARAGE VENTILATION PLAN
SCALE: 1/16"=1'-0"

Not For Construction

RossDrulisCusenbery

18294
Sonoma Highway
Sonoma
CA 95476

TEL 707 996 8448
FAX 707 996 8542

ARCHITECTURE

15000 INC.

heating, ventilation, air conditioning + plumbing design and engineering
2901 cleveland ave., suite 204 phone: 707.577.0363
santa rosa, ca 95403 fax: 707.577.0364

HOTEL PROJECT SONOMA

Sonoma, CA

Kenwood
Investments LLC

REVISIONS

No.	Description	Date
1		
2		
3		
4		
5		
6		
7		
8		
9		
10		

BASIS OF DESIGN REPORT

Sheet Title

GARAGE VENTILATION PLAN

Drawn By JMT

Checked By JMT

Scale: As Noted

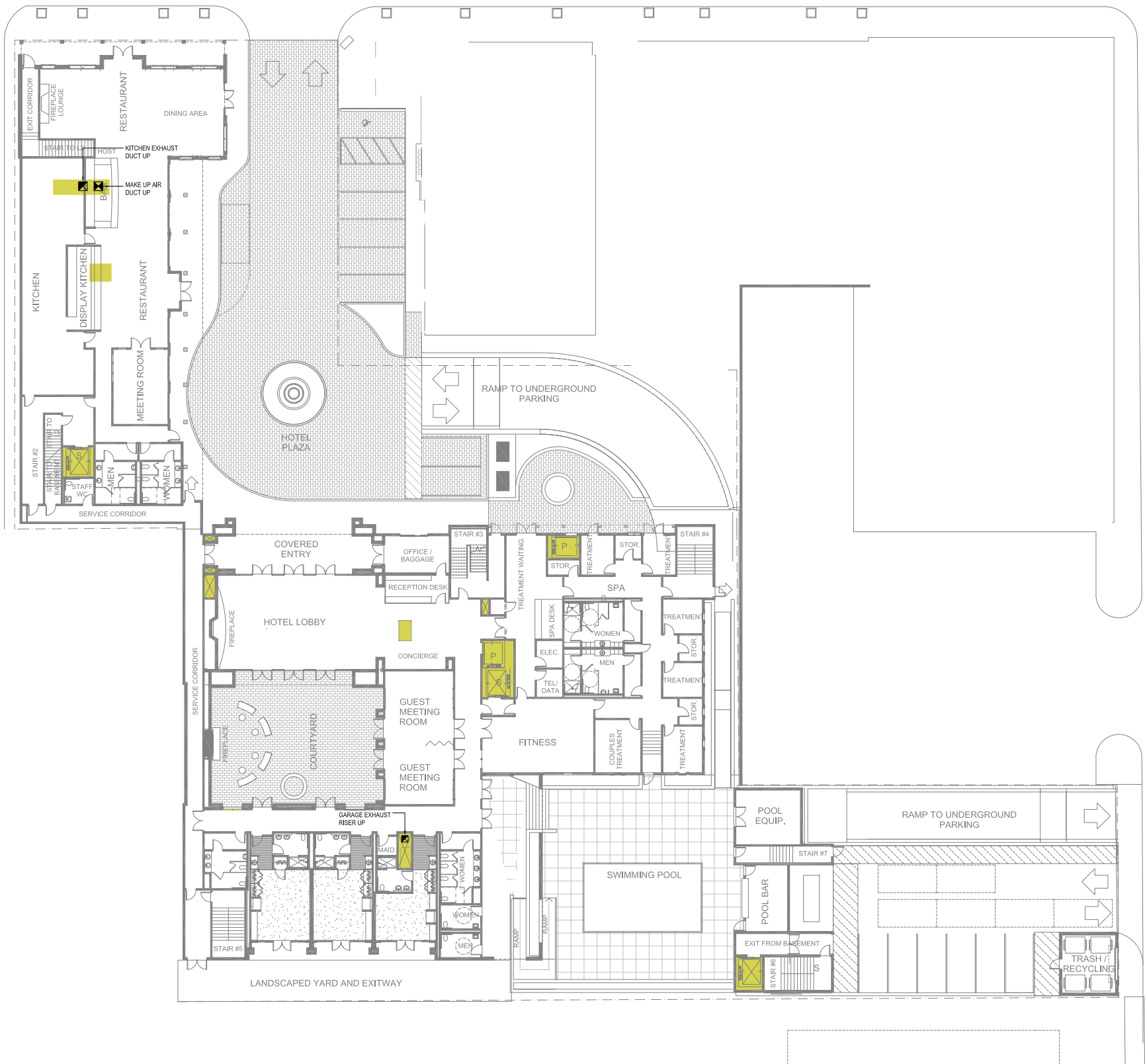
Date:
2015 / 03 / 31

Project No. Project Number

M0.01

Drawing No.

If this drawing is not 24" x 36", it is a reduced print - scale accordingly.
All rights reserved. Material may not be reproduced in any form
without permission from RossDrulisCusenbery Architecture, Inc.



1 GROUND FLOOR CORE VENTILATION PLAN
SCALE: 1/16"=1'-0"

Not For Construction

RossDrulisCusenbery

18294
Sonoma Highway
Sonoma
CA 95476

TEL 707 996 8448
FAX 707 996 8542

ARCHITECTURE

15000 INC.

2901 Cleveland Ave., Suite 204
Santa Rosa, CA 95403

HOTEL PROJECT
SONOMA

Sonoma, CA

Kenwood
Investments LLC

REVISIONS		
No.	Description	Date
1		
2		
3		
4		
5		
6		
7		
8		
9		
10		

BASIS OF DESIGN
REPORT

Sheet Title
GROUND
FLOOR CORE
VENTILATION
PLAN

Drawn By: JMT
Checked By: JMT
Scale: As Noted
Date: 2015 / 03 / 31
Project No.: Project Number

M0.02
Drawing No.

If this drawing is not 24" x 36", it is a reduced plot - scale accordingly.
All rights reserved. Material may not be reproduced in any form
without permission from RossDrulisCusenbery Architecture, Inc.



1 SECOND FLOOR CORE VENTILATION PLAN
SCALE: 1/16"=1'-0"

Not For Construction

RossDrulisCusenbery

18294
Sonoma Highway
Sonoma
CA 95476

TEL 707 996 8448
FAX 707 996 8542

ARCHITECTURE

15000 INC.

heating, ventilation, air conditioning • plumbing design and engineering
2901 cleveland ave., suite 204 phone: 707.577.0363
santa rosa, ca 95403 fax: 707.577.0364

HOTEL PROJECT SONOMA

Sonoma, CA

Kenwood
Investments LLC

REVISIONS

No.	Description	Date
1		
2		
3		
4		
5		
6		
7		
8		
9		
10		

BASIS OF DESIGN REPORT

Sheet Title

SECOND FLOOR CORE VENTILATION PLAN

Drawn By JMT

Checked By JMT

Scale: As Noted

Date:

2015 / 03 / 31

Project No. Project Number

M0.03

Drawing No.

If this drawing is not 24" x 36", it is a reduced print - scale accordingly.
All rights reserved. No part of this drawing may be reproduced in any form
without permission from RossDrulisCusenbery Architecture, Inc.



1 THIRD FLOOR CORE VENTILATION PLAN
SCALE: 1/16"=1'-0"

Not For Construction

RossDrulisCusenbery
18294
Sonoma Highway
Sonoma
CA 95476
TEL 707 996 8448
FAX 707 996 8542

15000 INC.
ARCHITECTURE
2901 Cleveland Ave., Suite 204
Santa Rosa, CA 95403
phone: 707.577.0363
fax: 707.577.0364

**HOTEL PROJECT
SONOMA**
Sonoma, CA
**Kenwood
Investments LLC**

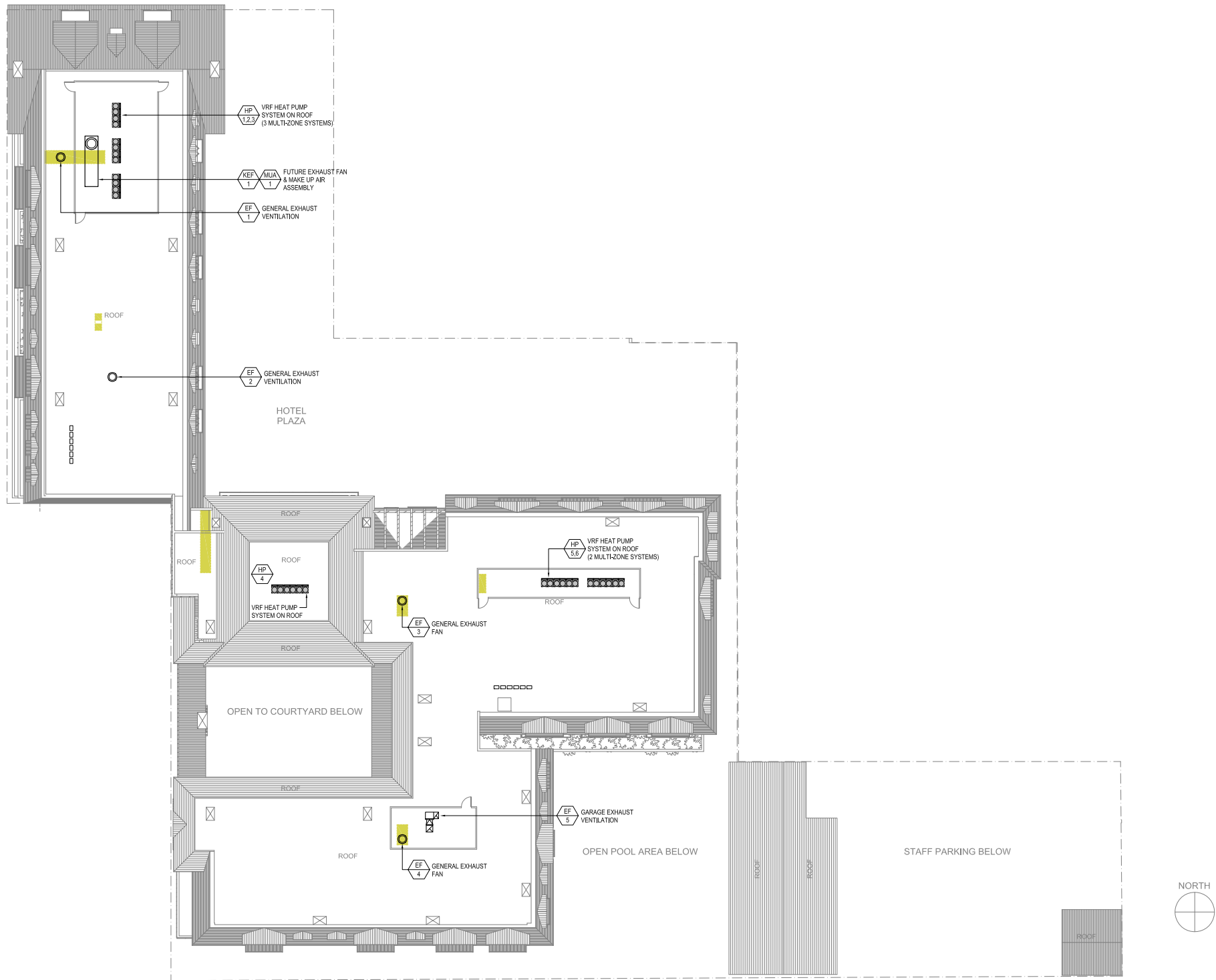
REVISIONS		
No.	Description	Date
1		
2		
3		
4		
5		
6		
7		
8		
9		
10		

**BASIS OF DESIGN
REPORT**

Sheet Title
**THIRD FLOOR
CORE
VENTILATION
PLAN**
Drawn By: JMT
Checked By: JMT
Scale: As Noted
Date: 2015 / 03 / 31
Project No. Project Number

M0.04
Drawing No.

If this drawing is not 24" x 36" & is reduced or enlarged, scale accordingly.
All rights reserved. Material may not be reproduced in any form
without permission from RossDrulisCusenbery Architecture, Inc.



1 HVAC ROOF PLAN
SCALE: 1/16"=1'-0"

Not For Construction

RossDrulisCusenbery

18294
Sonoma Highway
Sonoma
CA 95476

TEL 707 996 8448
FAX 707 996 8542

ARCHITECTURE

15000 inc.
heating, ventilation, air conditioning + plumbing design and engineering
2901 cleveland ave., suite 204 phone: 707.577.0363
santa rosa, ca 95403 fax: 707.577.0364

HOTEL PROJECT
SONOMA

Sonoma, CA

Kenwood
Investments LLC

REVISIONS

No.	Description	Date
△		
△		
△		
△		
△		
△		
△		
△		
△		

BASIS OF DESIGN
REPORT

Sheet Title

HVAC ROOF
PLAN

Drawn By JMT

Checked By JMT

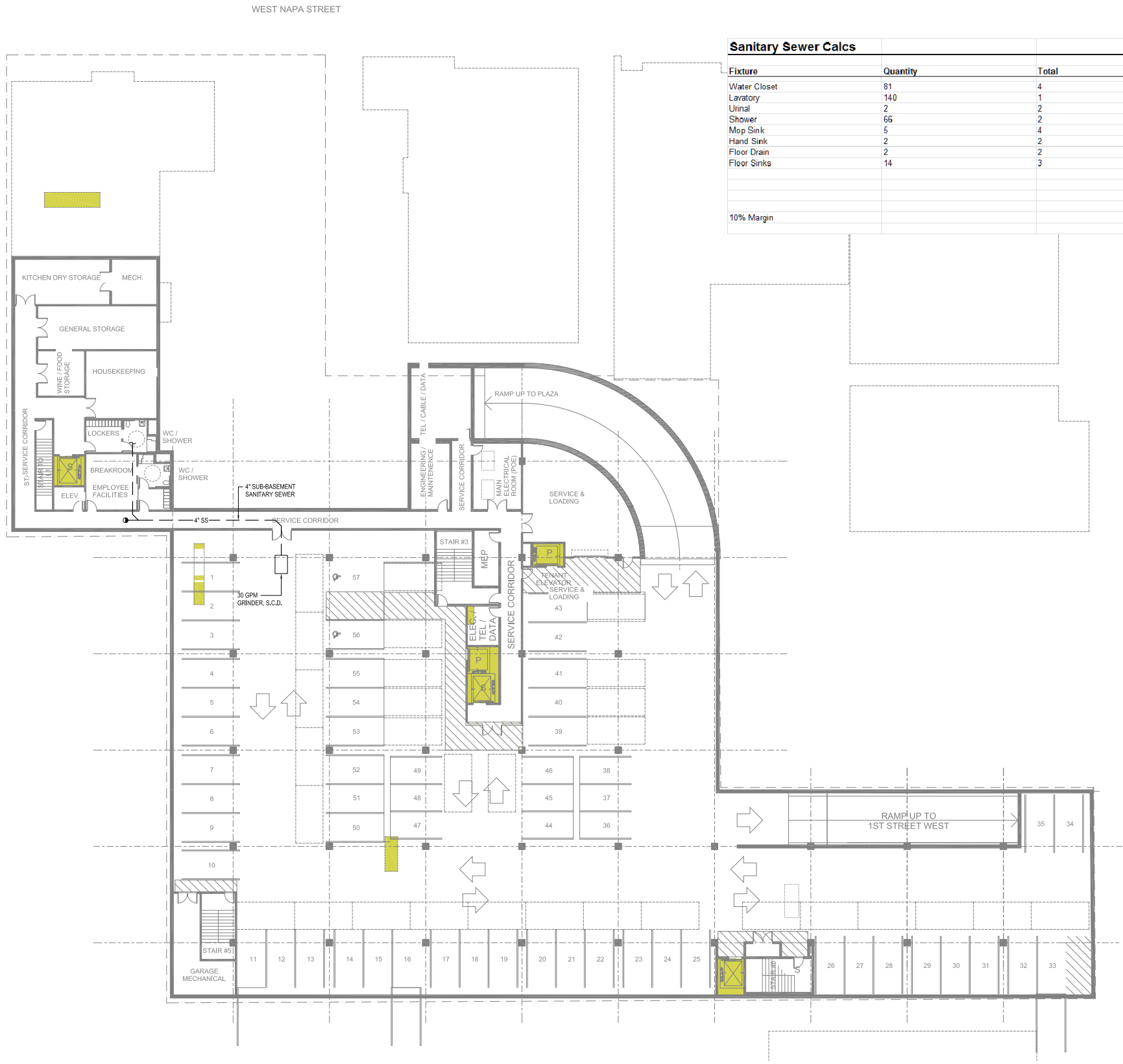
Scale: As Noted

Date:
2015 / 03 / 31

Project No. Project Number

M0.05
Drawing No.

If this drawing is not 24" x 36", it is a reduced print - scale accordingly.
All rights reserved. Material may not be reproduced in any form
without permission from RossDrulisCusenbery Architecture, Inc.



Sanitary Sewer Calcs			
Fixture	Quantity	Total	SS FU
Water Closet	81	4	324.00
Lavatory	140	1	140.00
Urinal	2	2	4.00
Shower	66	2	132.00
Mop Sink	5	4	20.00
Hand Sink	2	2	4.00
Floor Drain	2	2	4.00
Floor Sinks	14	3	42.00
			670.00
10% Margin			737.00

RossDrulisCusenbery

18294
Sonoma Highway
Sonoma
CA 95476
TEL 707 996 8448
FAX 707 996 8542

ARCHITECTURE

15000 INC.

design, construction, architecture, planning design and engineering
2001 development ave., suite 204 phone: 707.577.0363
santa rosa, ca 95403 fax: 707.577.0364

HOTEL PROJECT
SONOMA
Sonoma, CA
Kenwood
Investments LLC

REVISIONS		
No.	Description	Date
1		
2		
3		
4		
5		
6		
7		
8		
9		
10		

BASIS OF DESIGN
REPORT

Sheet Title
BASEMENT
SANITARY
SEWER
COORDINATION

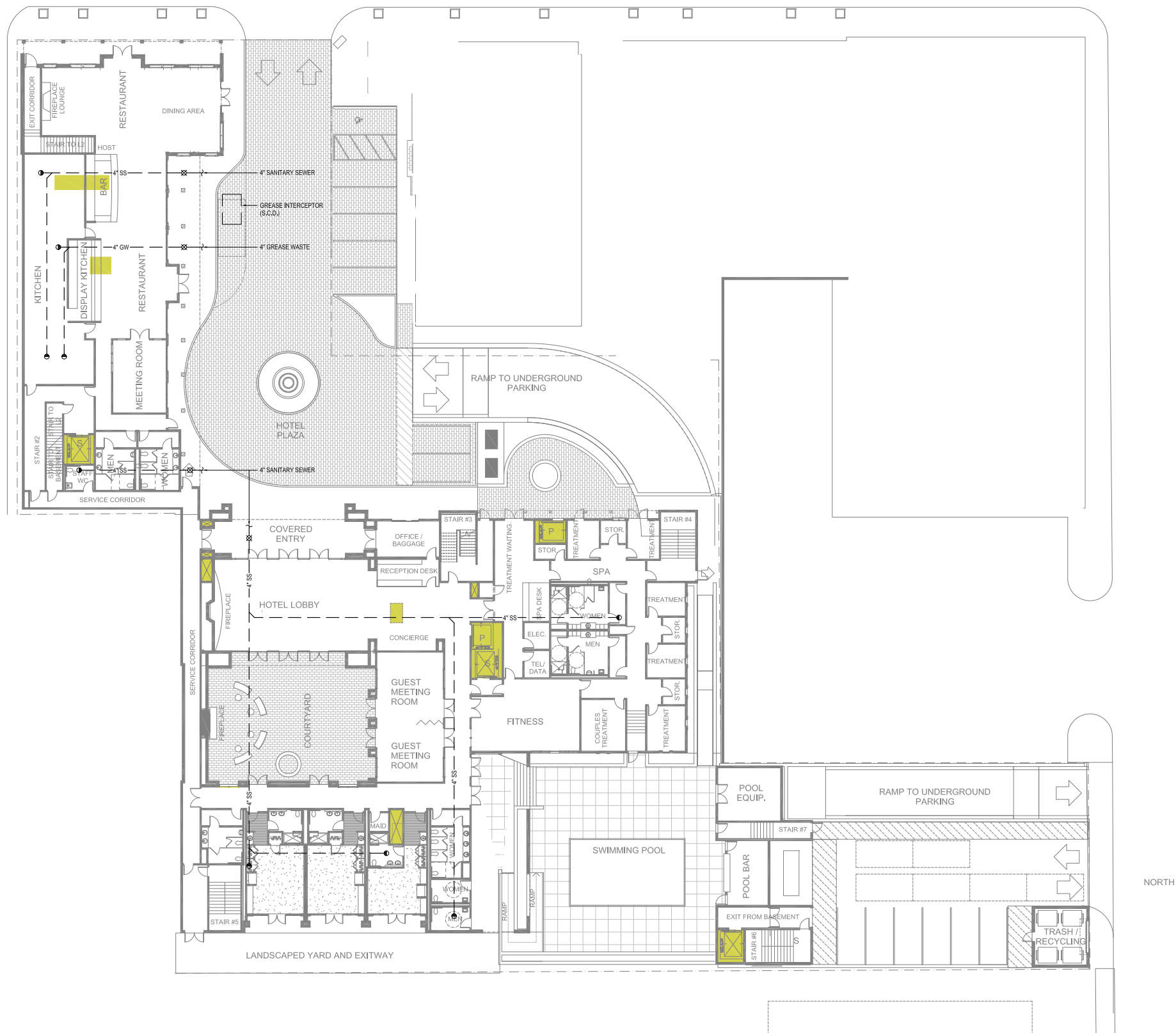
Drawn By JMT Checked By JMT
Scale: As Noted
Date: 2015 / 03 / 31
Project No. Project Number

P0.01
Drawing No.

If this drawing is not 24" x 36" it is in reduced plot scale accordingly.
All rights reserved. Noted may not be reproduced in any form
without permission from RossDrulisCusenbery Architecture, Inc.

1 BASEMENT SANITARY SEWER COORDINATION
SCALE: 1/16"=1'-0"

Not For Construction



1 SANITARY SEWER COORDINATION
SCALE: 1/16"=1'-0"

Not For Construction

RossDrulisCusenbery

18294
Sonoma Highway
Sonoma
CA 95476

TEL 707 996 8448
FAX 707 996 8542

ARCHITECTURE

15000 INC.

2901 Cleveland Ave., Suite 204
Santa Rosa, CA 95403

phone: 707.577.0363
fax: 707.577.0364

HOTEL PROJECT SONOMA

Sonoma, CA

Kenwood
Investments LLC

REVISIONS

No.	Description	Date
1		
2		
3		
4		
5		
6		
7		
8		
9		
10		

BASIS OF DESIGN REPORT

Sheet Title

SANITARY SEWER COORDINATION

Drawn By JMT

Checked By JMT

Scale: As Noted

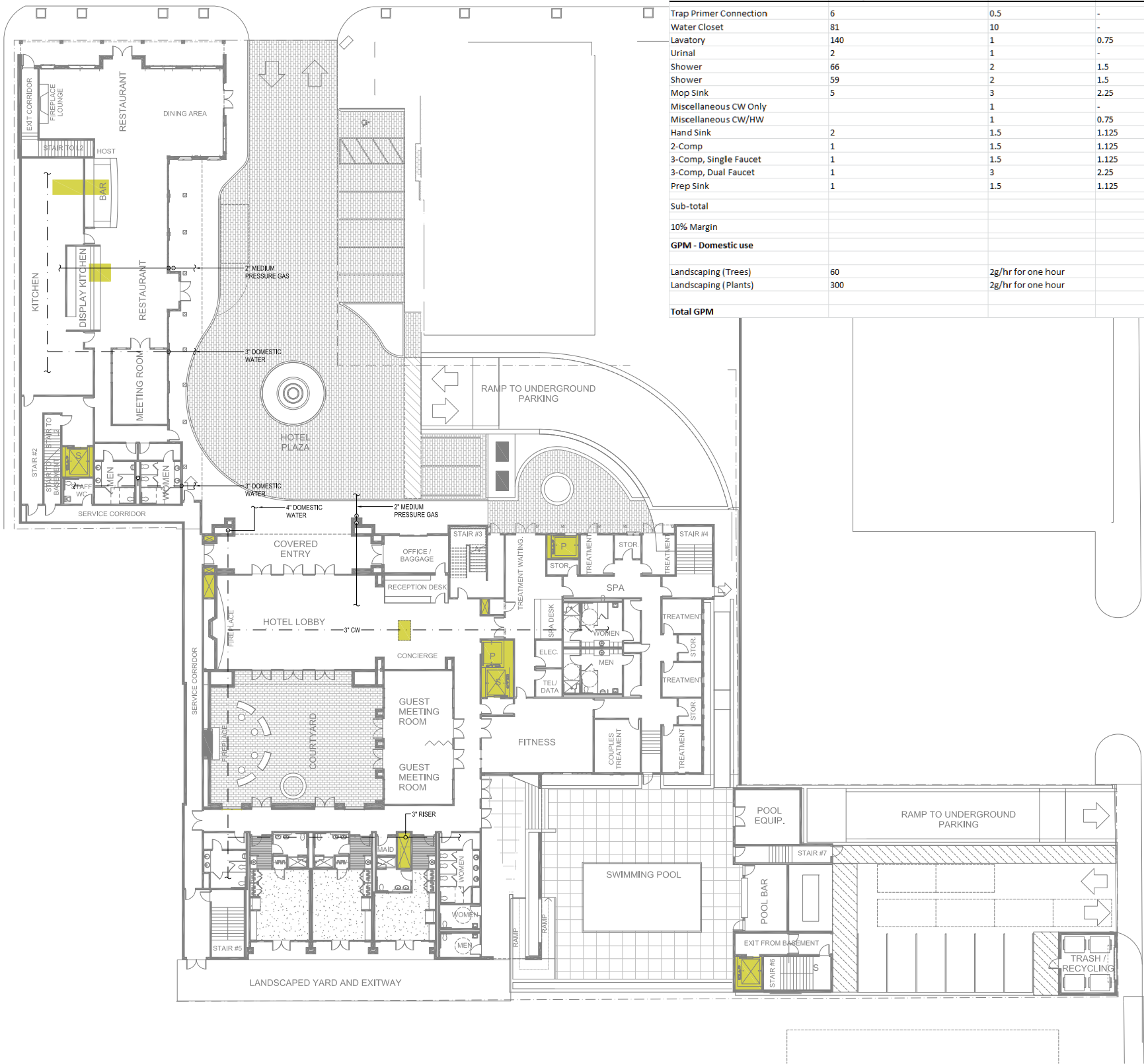
Date:
2015 / 03 / 31

Project No. Project Number

P0.02

Drawing No.

If this drawing is not 24" x 36" it is a reduced print - scale accordingly.
All rights reserved. Material may not be reproduced in any form
without permission from RossDrulisCusenbery Architecture, Inc.



Water Fixture Units				Hotel Project Sonoma	
Fixture	Quantity	Total	HW	CW FU	HW FU
Trap Primer Connection	6	0.5	-	3.00	-
Water Closet	81	10	-	810.00	-
Lavatory	140	1	0.75	140.00	105.00
Urinal	2	1	-	2.00	-
Shower	66	2	1.5	132.00	99.00
Shower	59	2	1.5	118.00	88.50
Mop Sink	5	3	2.25	15.00	11.25
Miscellaneous CW Only		1	-	0.00	-
Miscellaneous CW/HW		1	0.75	0.00	0.00
Hand Sink	2	1.5	1.125	3.00	2.25
2-Comp	1	1.5	1.125	1.50	1.13
3-Comp, Single Faucet	1	1.5	1.125	1.50	1.13
3-Comp, Dual Faucet	1	3	2.25	3.00	2.25
Prep Sink	1	1.5	1.125	1.50	1.13
Sub-total				1230.50	311.63
10% Margin				1353.55	342.79
GPM - Domestic use				295.00	
Landscaping (Trees)	60	2g/hr for one hour		2.00	GPM
Landscaping (Plants)	300	2g/hr for one hour		10.00	GPM
Total GPM				307.00	GPM

RossDrulisCusenbery

18294
Sonoma Highway
Sonoma
CA 95476

TEL 707 996 8448
FAX 707 996 8542

ARCHITECTURE

15000 inc.

design, construction, interior design, landscape design and engineering
2901 Cleveland Ave., Suite 204 Phone: 707.577.0363
Santa Rosa, CA 95403 Fax: 707.577.0364

HOTEL PROJECT
SONOMA

Sonoma, CA

Kenwood
Investments LLC

REVISIONS		
No.	Description	Date

BASIS OF DESIGN
REPORT

Sheet Title

DOMESTIC
WATER
COORDINATION

Drawn By JMT Checked By JMT

Scale: As Noted

Date:
2015 / 03 / 31

Project No. Project Number

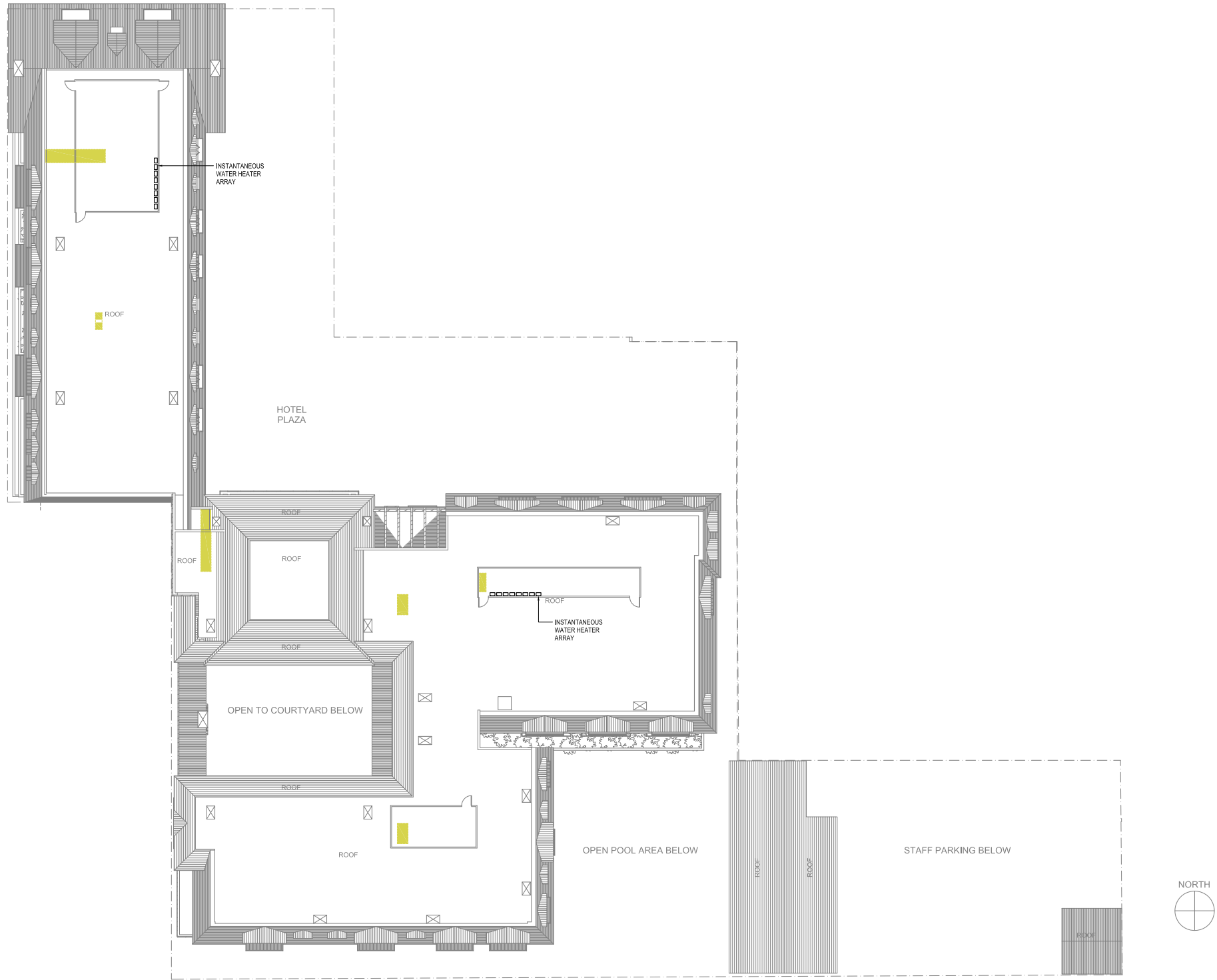
P0.03

Drawing No.

If this drawing is not 24" x 36", it is a reduced scale - scale accordingly.
All rights reserved. Material may not be reproduced in any form
without permission from RossDrulisCusenbery Architecture, Inc.

1 DOMESTIC WATER COORDINATION
SCALE: 1/16"=1'-0"

Not For Construction



1 PLUMBING ROOF PLAN
SCALE: 1/16"=1'-0"

Not For Construction

RossDrulisCusenbery

18294
Sonoma Highway
Sonoma
CA 95476

TEL 707 996 8448
FAX 707 996 8542

ARCHITECTURE

15000 INC.

2901 Cleveland Ave., Suite 204 Santa Rosa, CA 95403
Phone: 707.577.0363 Fax: 707.577.0364

HOTEL PROJECT
SONOMA

Sonoma, CA

Kenwood
Investments LLC

REVISIONS

No.	Description	Date
1		
2		
3		
4		
5		
6		
7		
8		
9		
10		

BASIS OF DESIGN
REPORT

Sheet Title

PLUMBING
ROOF PLAN

Drawn By JMT

Checked By JMT

Scale: As Noted

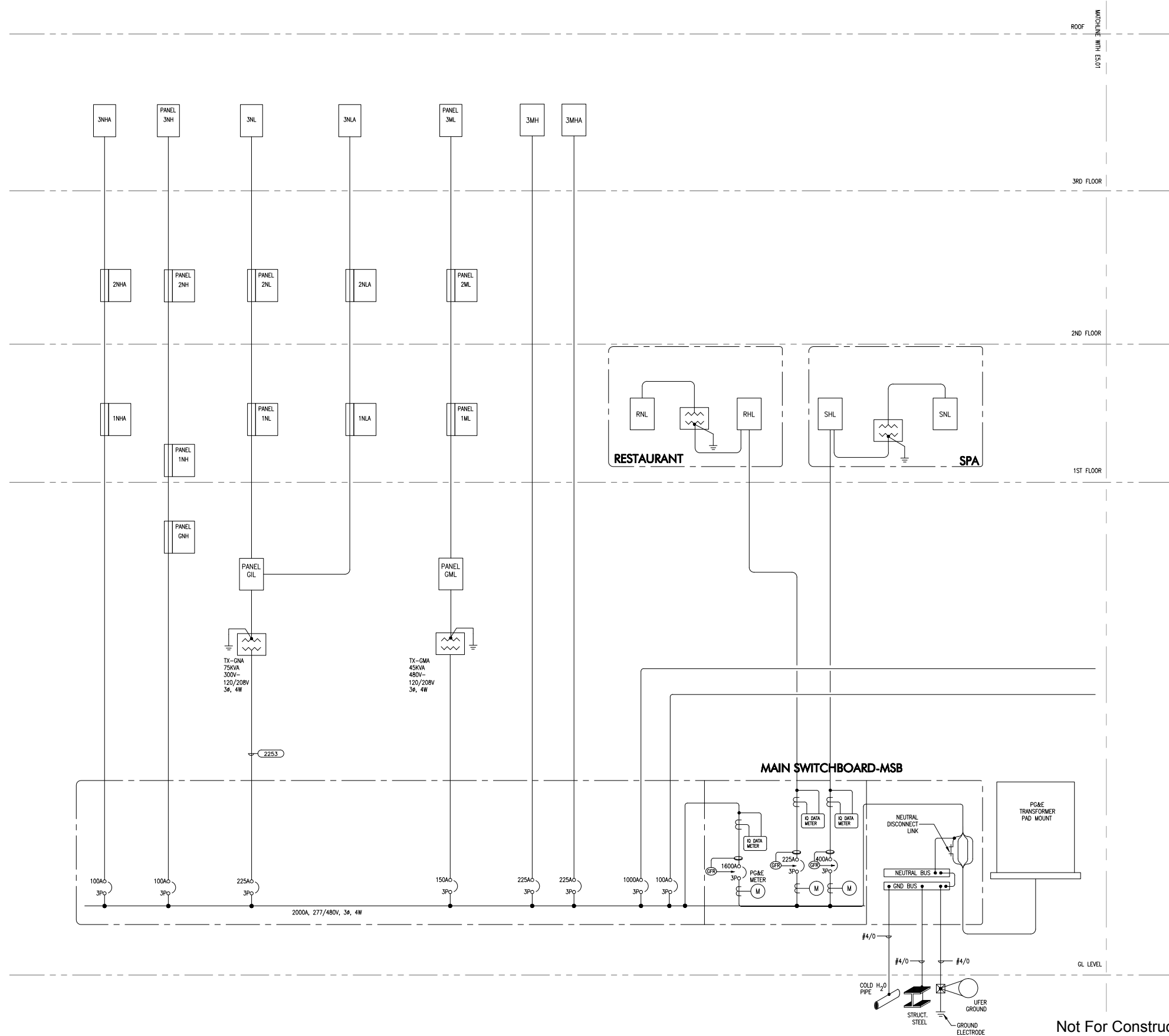
Date:
2015 / 03 / 31

Project No. Project Number

P0.04

Drawing No.

If this drawing is not 24" x 36" it is a reduced plot - scale accordingly.
All rights reserved. Material may not be reproduced in any form
without permission from RossDrulisCusenbery Architecture, Inc.



Not For Construction



Ross Drulisusenbery

18294
Sonoma Highway
Sonoma
CA 95476

TEL 707 996 8448
FAX 707 996 8542

ARCHITECTURE

SILVERMAN & LIGHT, INC.
ELECTRICAL ENGINEERS

1801 Park Avenue, Suite 100
Emeryville, CA 94608
Telephone 510 655-1200
Facsimile 510 655-1344
www.silvermanlight.com



Sonoma, CA

**Kenwood
Investments LLC**

[illegible]

BASIS OF DESIGN REPORT

Sheet Title

ONE LINE B

Drawn By IC Checked By CL

Scale: NTS

Date:

2015 / 04 / 08

Project No. Project Number

E5.01
Drawing No.

If this drawing is not 24" x 36", it is a reduced print - scale accordingly.
All rights reserved. Material may not be reproduced in any form
without permission from RossCruickshankArchitecture, Inc.

12
VISUAL SIMULATIONS



1st Street West Before



1st Street West After



2nd Street West Before



2nd Street West After



2nd Street West Elevation Before



2nd Street West Elevation After



1st Street West Elevation Before



1st Street West Elevation After



West Napa Street From Sonoma Plaza Before



West Napa Street From Sonoma Plaza After

