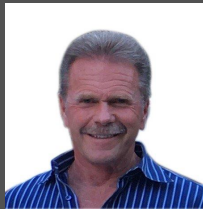


Our Panel



Larry Florin

CEO - Burbank Housing Group



Steve Ledson

Founder - Ledson Construction + Development



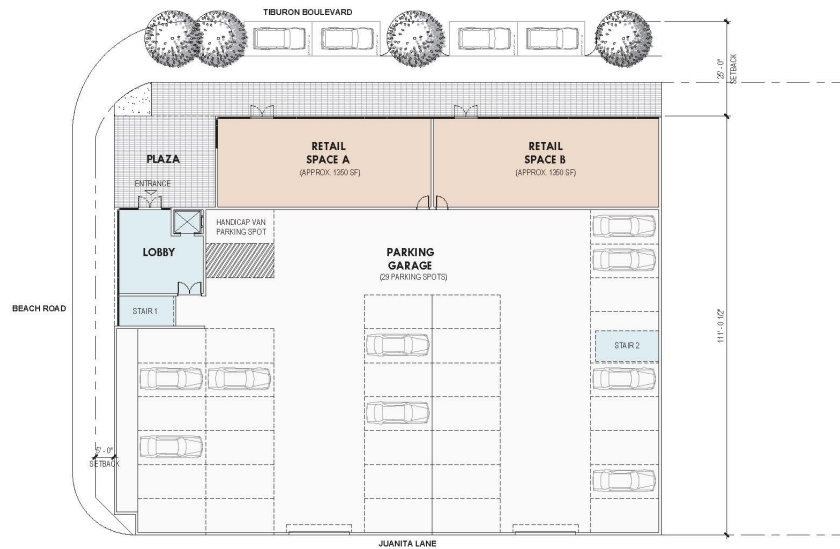
Benjamin Wickham

Affordable Housing Director, Sonoma County Community Development Commission

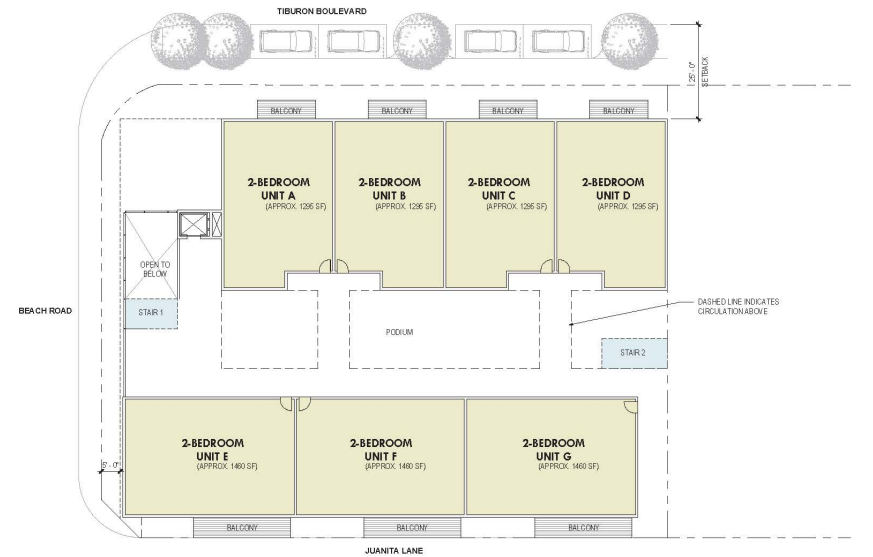


Jeff Zimmerman

Founder and Principal, Zimmerman and Associates



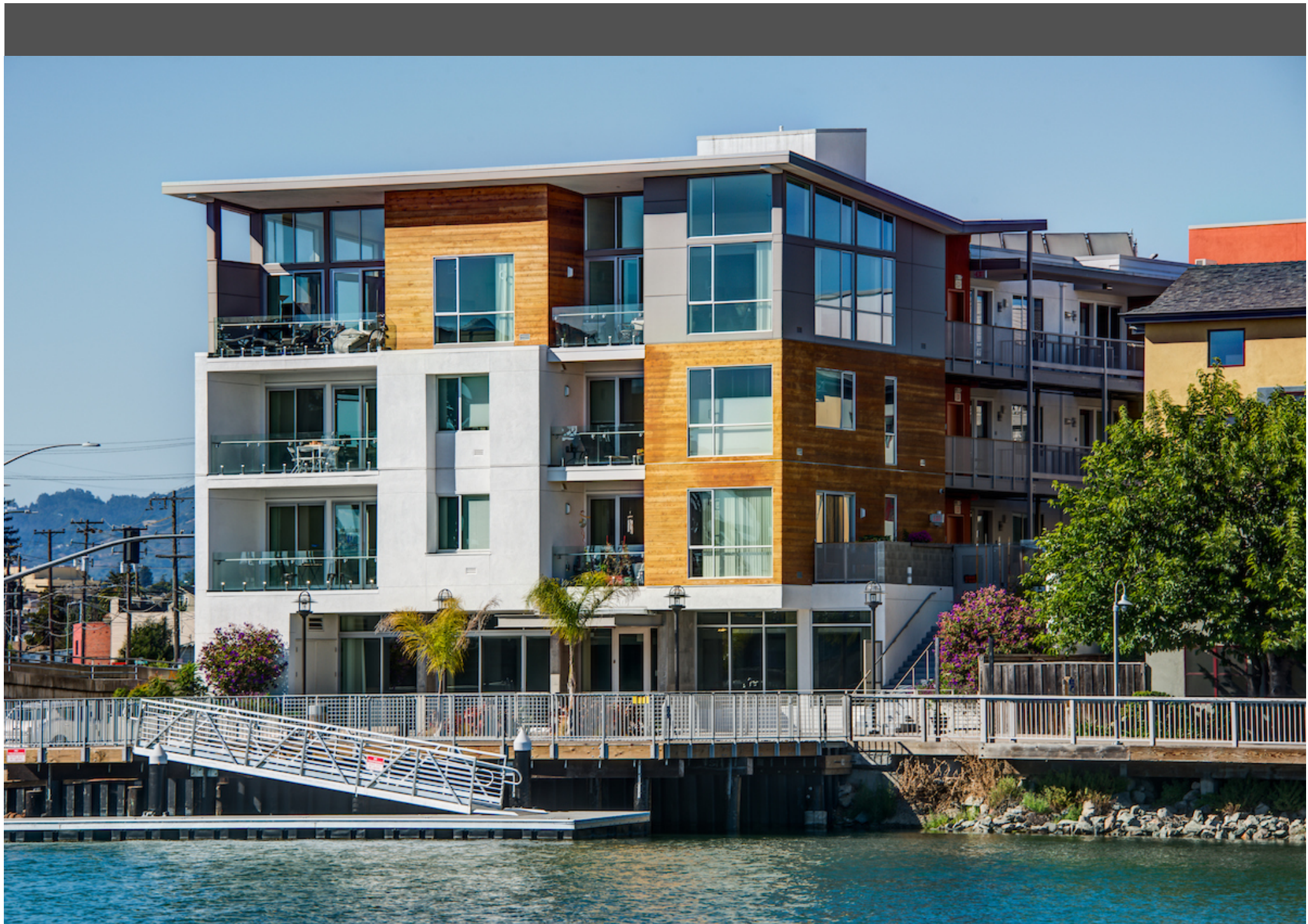
LEVEL 1 FLOOR PLAN
1600 TIBURON BLVD
 12/15/16 Scale: 1/16" = 1'-0"



LEVEL 2-3 FLOOR PLAN
1600 TIBURON BLVD
 12/15/16 Scale: 1/16" = 1'-0"



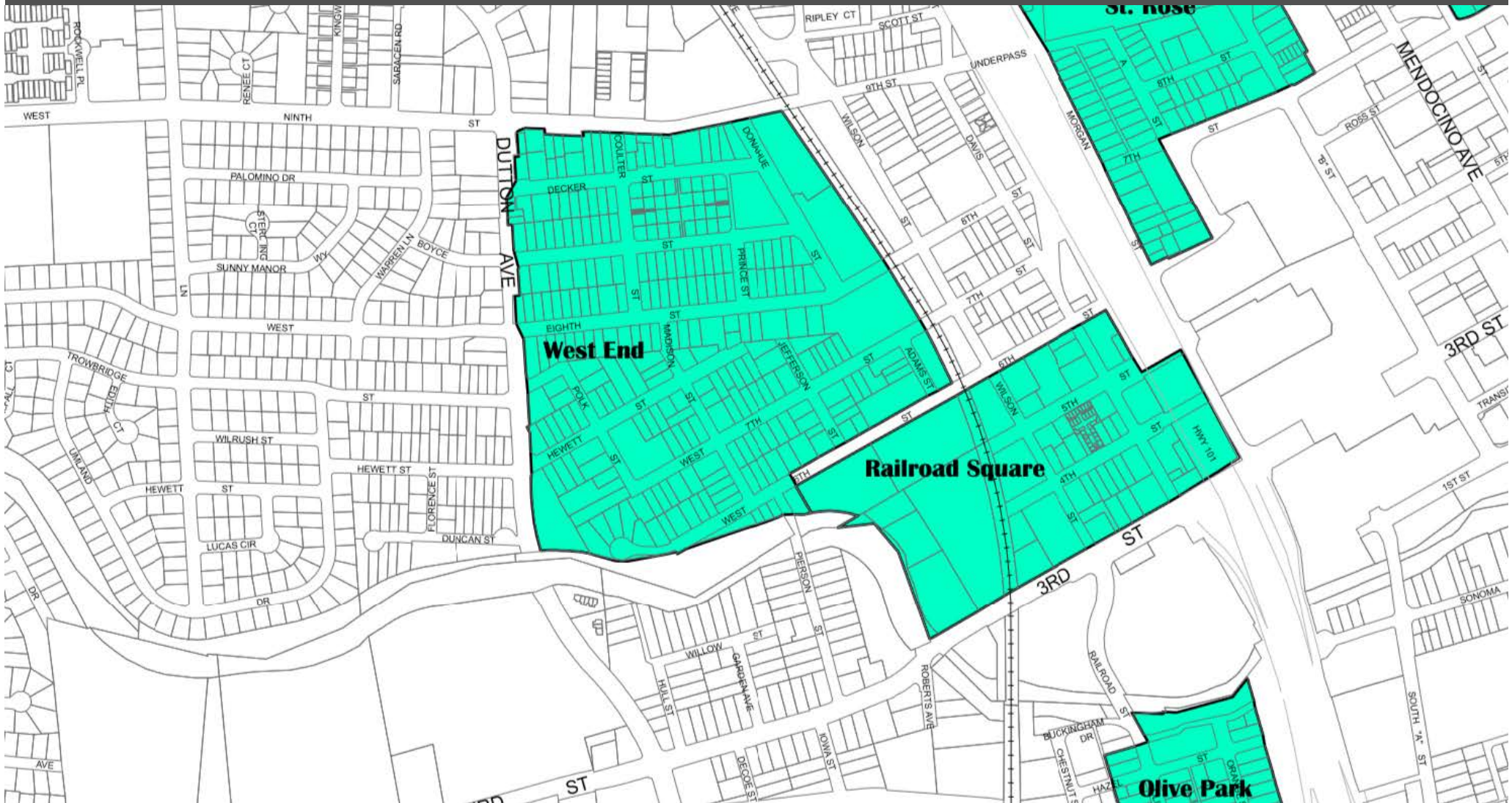












What's Next?

June 20th - EXPLORE

Interactive community workshop to explore concepts, priorities and potential locations for housing.

6-9 pm

Vintage House



urbangreen®