




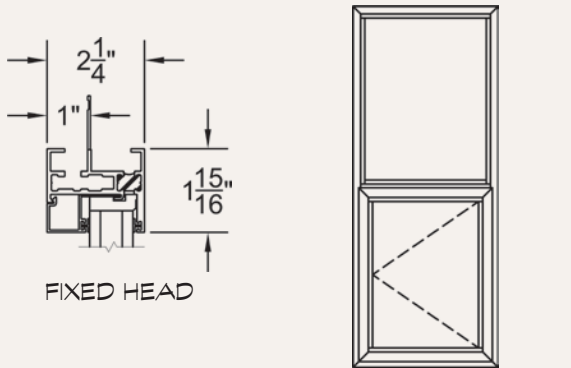
**SERIES 250-T**

**“THERMAL FRAME” CASEMENT, AWNING & HOPPER**



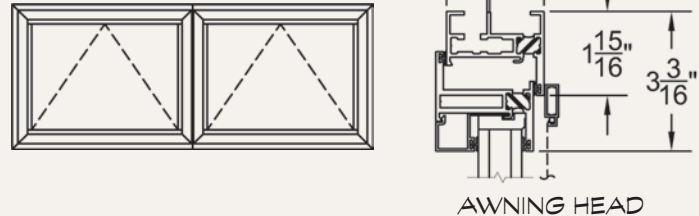
 TYPICAL CONFIGURATIONS	 EXAMPLE SHGC	 EXAMPLE U-FACTOR
<ul style="list-style-type: none"> <li>• C, CC, COC, A, AA, AOA, H, HH.</li> <li>• Maximum Panel Square Footage: Casement, Awning &amp; Hopper: 24 ft<sup>2</sup></li> <li>• Partner Products: Series 3800-T Fixed System (for inserts; pages 25–26). Series 250 Slider, Single Hung and Fixed Windows (page 33–34).</li> </ul>	<sup>2</sup> NFRC: 0.14 <sup>3</sup> S.P.A.: 0.15	<sup>2</sup> NFRC: 0.39 <sup>3</sup> S.P.A.: 0.34

ELEVATION VIEW: O/C

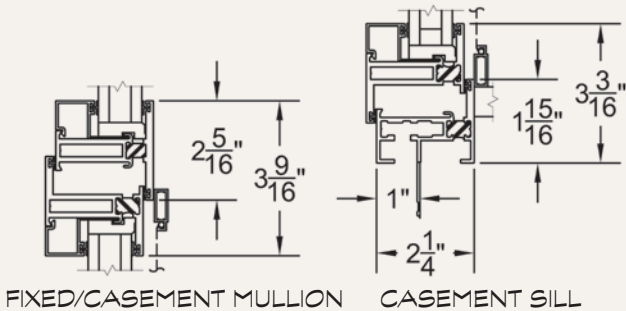


FIXED HEAD

ELEVATION VIEW: AA

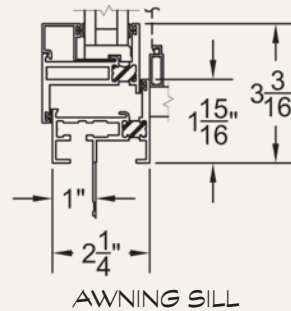


AWNING HEAD

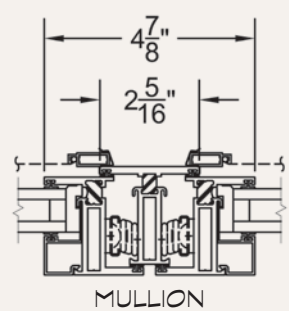


FIXED/CASEMENT MULLION

CASEMENT SILL



AWNING SILL



MULLION

<sup>2</sup>Specimen size: Nom. 59" x 24".

<sup>3</sup>Simulated Performance Alternative size: 72" x 36" awning using Cardinal 366/Argon/Cardinal 366 triple glazing.





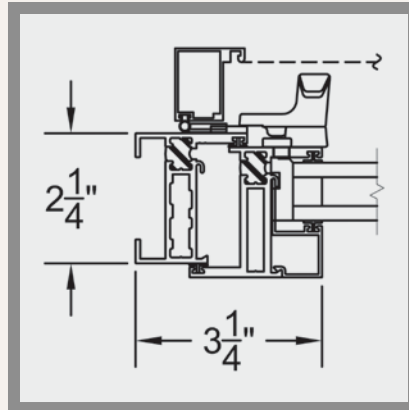
## DESIGN NOTES

- Clean, linear sightlines.
- Insulated extrusions.
- Great sound, energy and weather performance.



### Welded Corners:

The time proven method for building hinged windows comes standard on the Series 250-T. It includes an exceptionally strong corner, where an aluminum extruded corner key is first fitted into each frame and vent extrusion, then crimped using a hydraulic press and is then finally welded in place. This is the same process used in creating the Series 2000 window.



### Hinged Screen:

This austere new option features a magnetic keeper & latch, and neoprene bulb as the bug guard. Hinges are mounted top and bottom for casements and left-top and right-top for awnings. This feature is only offered with the 4-bar hinge option, which is what the factory recommends for coastal and high wind projects.



### Narrow Butt Hinges:

The standard casement hinge measures a sleek 3" long, 7/16" in diameter, and is constructed of #316 stainless steel. For maximum coastal protection each hinge is electro-polished and then brush finished. For an even smaller profile hinge we offer the hidden 4-bar hinge and customers may also choose the optional 4" aluminum hinge that is finished to match the frame color. Refer to page 42 of this brochure as well as the online product page for more information.



### Steel Look Applied Grid:

The Series 250-T, as well as several other products (see page 37), offer this feature, which resembles a steel window yet retains all the advantages of aluminum.

**SERIES 530-T**

**“THERMAL FRAME” HORIZONTAL SLIDER & SINGLE HUNG**



**TYPICAL CONFIGURATIONS**

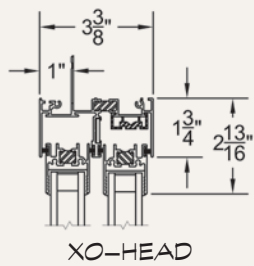
- XO, OX, XOx, SH.
- Maximum Panel Width: Horizontal Slider: 78"; Single Hung: 158".
- Maximum Panel Height: Horizontal Slider: 90"; Single Hung: 145".
- Partner Products: Series 530-T Glazed to Frame.

**EXAMPLE SHGC**

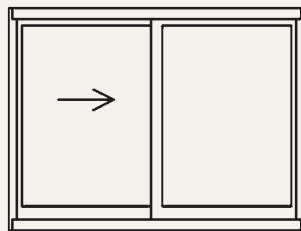
<sup>2</sup>NFRC: 0.21  
<sup>3</sup>S.P.A.: 0.23

**EXAMPLE U-FACTOR**

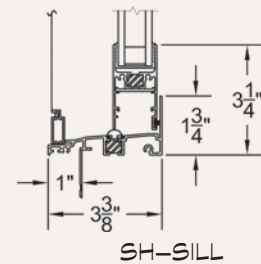
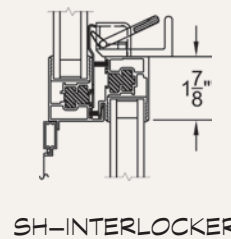
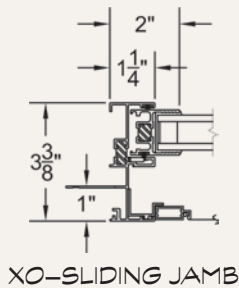
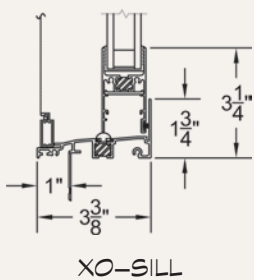
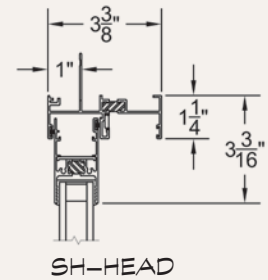
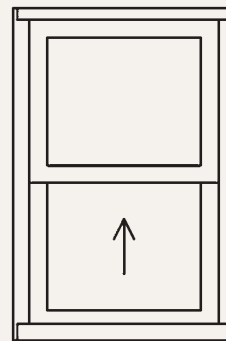
<sup>2</sup>NFRC: 0.36  
<sup>3</sup>S.P.A.: 0.29



ELEVATION VIEW: XO



ELEVATION VIEW: SH



<sup>1</sup>Max width and height are not necessarily available in combination.

<sup>2</sup>Specimen size: Nom. 59" x 47".

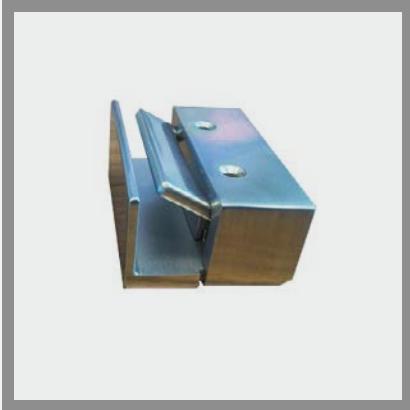
<sup>3</sup>Simulated Performance Alternative size: 144" x 90" XO using Cardinal 366-i89/Argon glass.





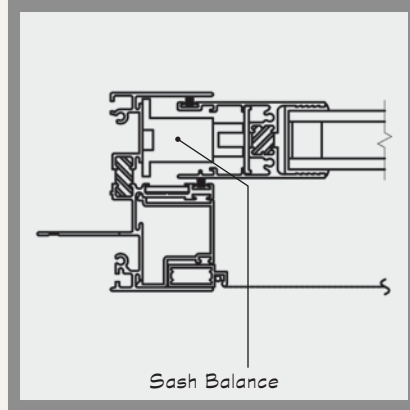
## DESIGN NOTES

- Large sizes.
- Concealed thermal material.



### Designer Latch:

Every Fleetwood sliding window comes standard with our own proprietary latch. Made in the USA and constructed of #316 stainless steel, this latch has no rival. It is a self-latching design so you only need close the window to be sure it is securely locked. Available in either a brushed stainless or painted black. If a custom color is desired, it can be easily removed from the window and sent to a local finisher.



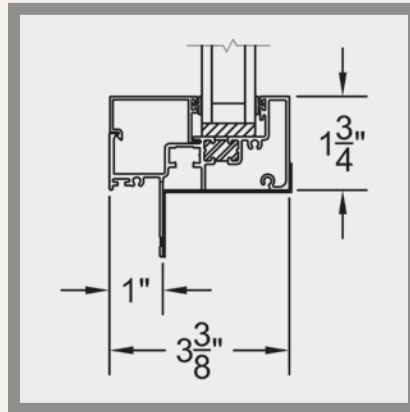
### Side Load Single Hung:

The Series 530-T single hung incorporates a similar balance system as the Series 250 single hung. These *block and tackle* sash balances are much more stable than the adjustable spiral balances often found in cheaper window products. Typical residential windows offer flashy features such as tilt and clean but that feature dramatically alters the simple architectural lines of the extrusion. The 530-T, as well as the 250 single hung, both provide clean lines only offered by concealed balances.



### Tandem Rollers:

The Series 530-T rolling system is certainly unique in the market. It is the only sliding window with an adjustable tandem roller. Even more, the roller housing is made of stainless steel and nylon tires so the aluminum and finish are not damaged.



### Center Glaze Look:

The Series 530-T operable windows are accompanied by a fixed system of the same frame depth. Some customers prefer the 530-T fixed window because the glazing is more centered. Notice the factory supplied sill pan.

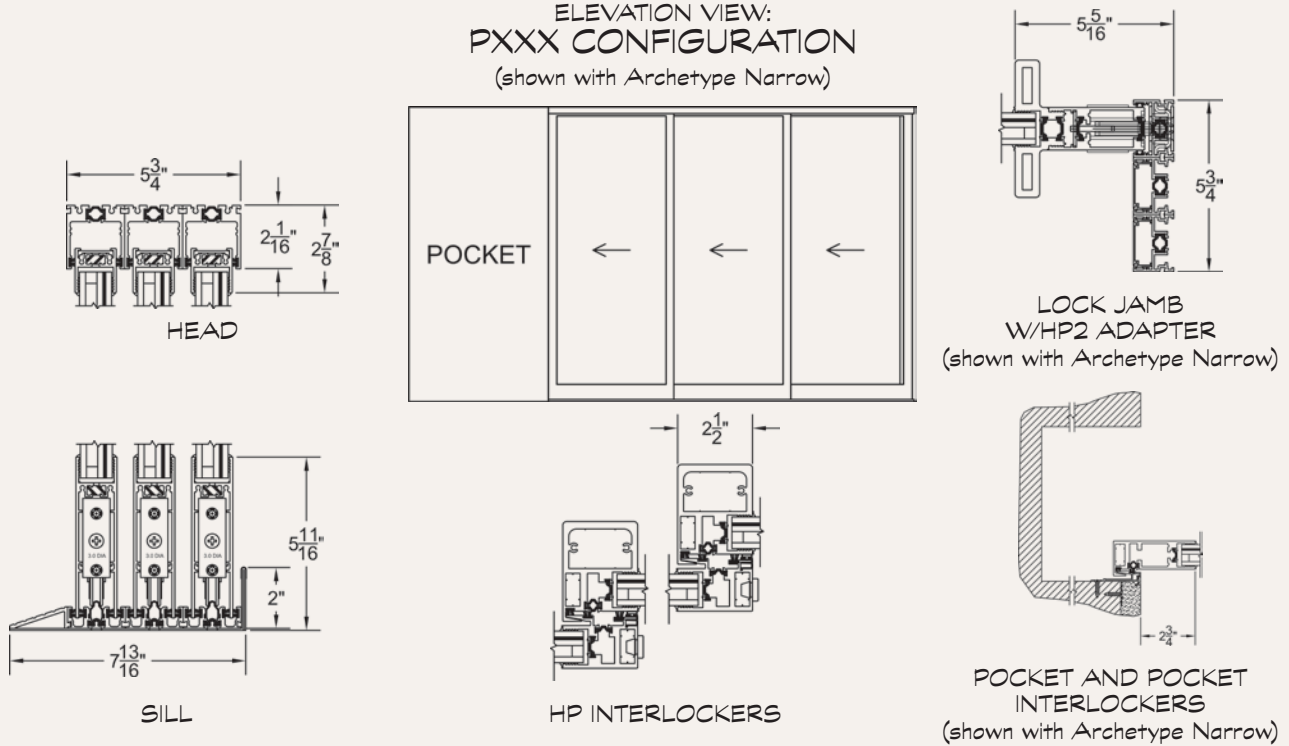




Photo by Maria Moreno © 2015

<p><b>TYPICAL CONFIGURATIONS</b></p> <ul style="list-style-type: none"> <li>• Multi-Slide, Pocket and Corner (90°–135°) applications.</li> <li>• Any combination of O &amp; X panels—no limit on the number of panels.</li> </ul>	<p><b>DESIGN PRESSURE</b></p> <p><b>+50.0/–55.0 PSF</b></p>	<p><b>MAX PANEL WIDTH</b></p> <p><b>62"</b></p>	<p><b>MAX FRAME HEIGHT</b></p> <p><b>120"</b></p>
---	---	---	---

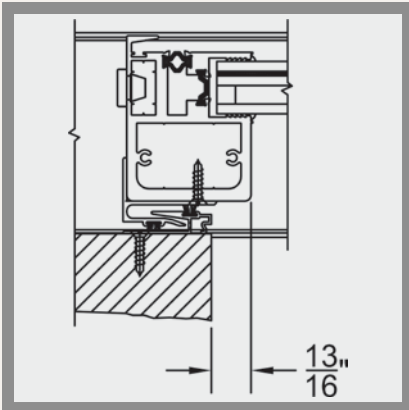
**ELEVATION VIEW:  
PXXX CONFIGURATION**  
(shown with Archetype Narrow)





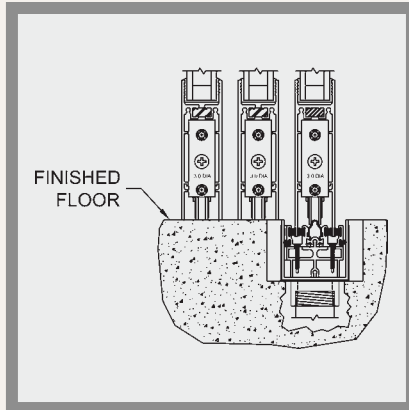
## DESIGN NOTES

- Slender interlockers (2-1/2").
- Interior/exterior blended floor option (Sub Sillpan)



### Reverse HP Interlocker:

Pocketing doors exceeding 130" in height require the HP2 interlockers (pictured above). This feature allows all such panels to bury inside the pocket.



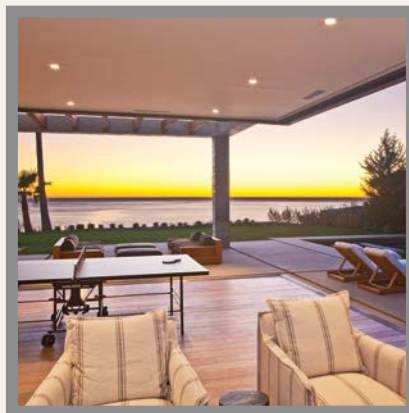
### Sub Sillpan Option:

This feature creates a continuous floor look with the added benefit of weather performance. Specifically, the staggered track option achieves a 6 PSF water test result, which is equal to an HC 40 (Heavy Commercial) door. The detail above shows how the tracking system can be level with the finished floor but still provide exceptional water performance underneath. This feature is also available on the Series 3070-HI (pages 3—4).



### Minimalistic Hardware:

The standard locking system is our patented Archetype system (page 1). However, the 3070-HI, 3070-T, and 3000-T also offer the option of a sleeker locking stile (pictured above) called the Archetype Narrow. The Narrow includes the same latch as the Archetype but with a vertical actuation and a smaller footprint.



### No Post Corner:

A custom extrusion was created to allow 90° and odd angle corners without the need for a post or jamb. The result is the strongest and most attractive corner door on the market. Imagine the stunning view once the doors are in the fully opened position. To make it even more dramatic, design the walls to allow these door panels to disappear into a pocket.

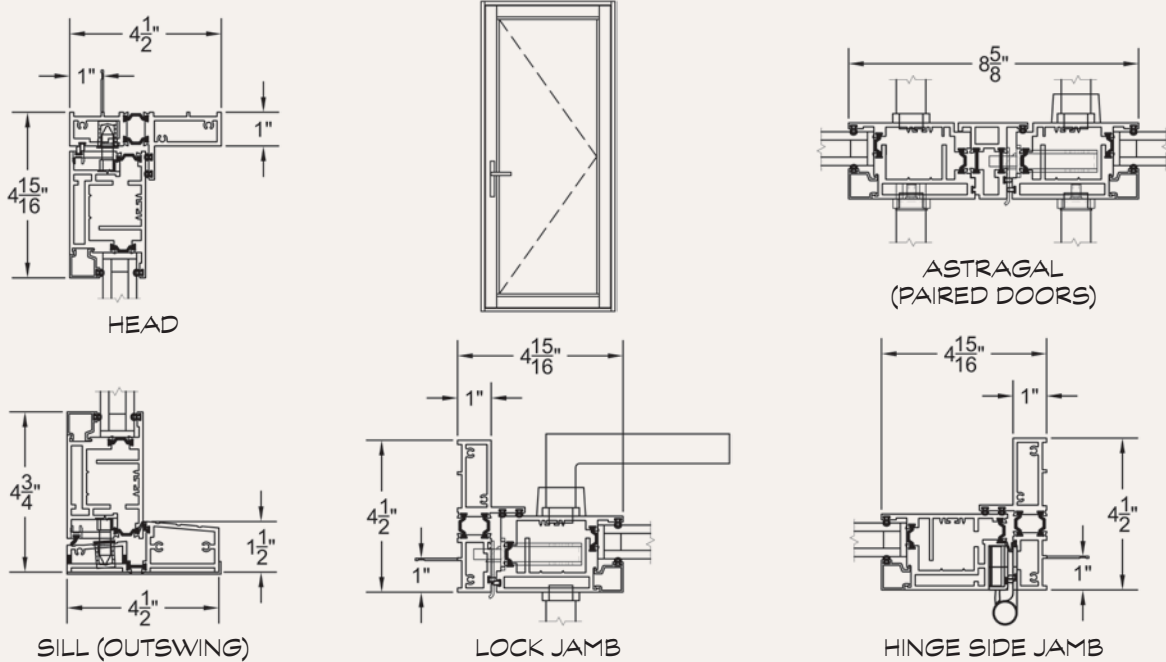
**SERIES 3200-T**

**NARROW STYLE "THERMAL FRAME" HINGED DOOR**



TYPICAL CONFIGURATIONS	← MAX PANEL WIDTH	↑ MAX PANEL HEIGHT	☀ EXAMPLE SHGC	❄ EXAMPLE U-FACTOR
• H, HH, OH, OOH, OHO.	40"	108"	<sup>2</sup> NFRC: 0.22 <sup>3</sup> S.P.A.: 0.25	<sup>2</sup> NFRC: 0.39 <sup>3</sup> S.P.A.: 0.31

ELEVATION VIEW:  
H CONFIGURATION



<sup>2</sup>Specimen size: Nom. 38" x 82".

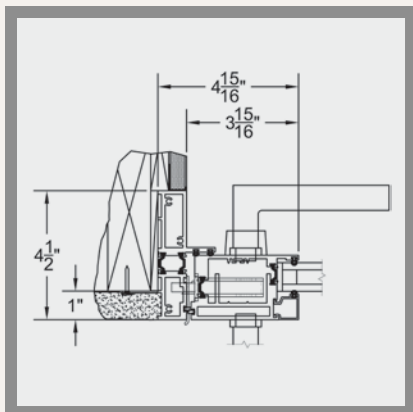
<sup>3</sup>Simulated Performance Alternative size: 72" x 108" HH using SN68/Argon/Clear/Argon/SN68 triple glazing.





## DESIGN NOTES

- Narrow 3-15/16" jamb profile (see Slender Lines, below).
- Adjustable hinges.



### Slender Lines:

The Series 3200-T boasts a jamb profile of only 4-15/16". Even better, the jamb was designed for finished walls to bury another 1", leaving a wall-to-glass profile of only 3-15/16" on the handle side and 4-1/16" on the hinge side.



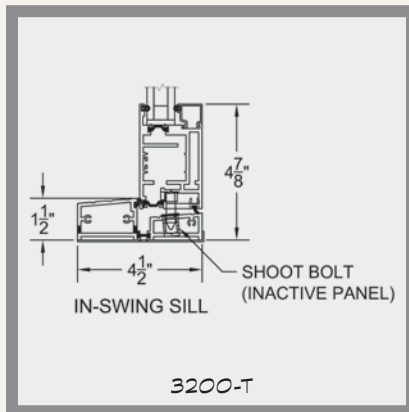
### Minimalist Hardware:

The hardware selected for the 3200-T is manufactured in Germany by FSB. The handle plate is a slimmer version of the Series 3900-T plate but uses the same stainless lever so mixing both products is more feasible. The door self latches when closed and is secured with a dead bolt.



### Flush Mounted Adjustable Hinges:

Each vent is provided with four adjustable hinges that are mortised into the extrusions (see the cross section on page 19). The top and bottom hinges provide horizontal movement and the two center hinges allow for vertical adjusting.



### Inswing Water Performance:

The Series 3200-T offers an inswing option that provides a modicum of water protection. Notice the sill design includes a slope that guides water to the trough.