

PG&E - PUBLIC SAFETY POWER SHUTOFF Extended Power Outage

Presentation to the City Council
Update on City of Sonoma Preparedness Efforts

City Manager Cathy Capriola
Fire Chief Steve Akre



What is the PG&E Public Safety Power Shutoff?

- ▶ A precautionary measure following the 2017 and 2018 wildfires, PG&E is expanding and enhancing its Community Wildfire Safety Programs to further reduce wildfire risks and help keep customers and the communities safe.
- ▶ This includes expanding the Public Safety Power Shutoff program beginning with the 2019 wildfire season to include all electric lines that pass through high fire-threat areas – both distribution and transmission lines.
- ▶ New challenge; high level of uncertainty; need to prepare for the worst and hope for the best.

Public Safety Power Shutoff (PSPS)

We **monitor conditions** across our system and evaluate whether to proactively turn off electric lines for safety **when gusty winds and dry conditions combine with a heightened fire risk.**

While no single factor will drive a Public Safety Power Shutoff, some factors include:



A RED FLAG WARNING

declared by the National Weather Service



LOW HUMIDITY LEVELS

generally 20% and below



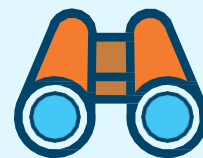
FORECASTED SUSTAINED WINDS GENERALLY ABOVE 25 MPH AND WIND GUSTS IN EXCESS OF APPROXIMATELY 45 MPH,

depending on location and site-specific conditions such as temperature, terrain and local climate



CONDITION OF DRY FUEL

on the ground and live vegetation (moisture content)



ON-THE-GROUND, REAL-TIME OBSERVATIONS

from PG&E's Wildfire Safety Operations Center and field observations from PG&E crews

PSPS Event Notifications

Extreme weather threats can change quickly. **Our goal, dependent on weather, is to provide customers with advance notice prior to turning off power.** We will also provide updates until power is restored.

Timing of Notifications (when possible)

- **~48 HOURS** before electricity is turned off
- **~24 HOURS** before electricity is turned off
- **JUST BEFORE** electricity is turned off
- **DURING THE PUBLIC SAFETY OUTAGE**
- **ONCE POWER HAS BEEN RESTORED**



City/County/Agency Notifications

We will **make every attempt to provide notice in advance of notifying customers** through:

- **Phone calls/emails** to primary contacts
- **Automated notifications** to send alerts through multiple channels
- **Provide customer alerts** to share via channels, such as city or county website, Nixle, Nextdoor and Reverse 911

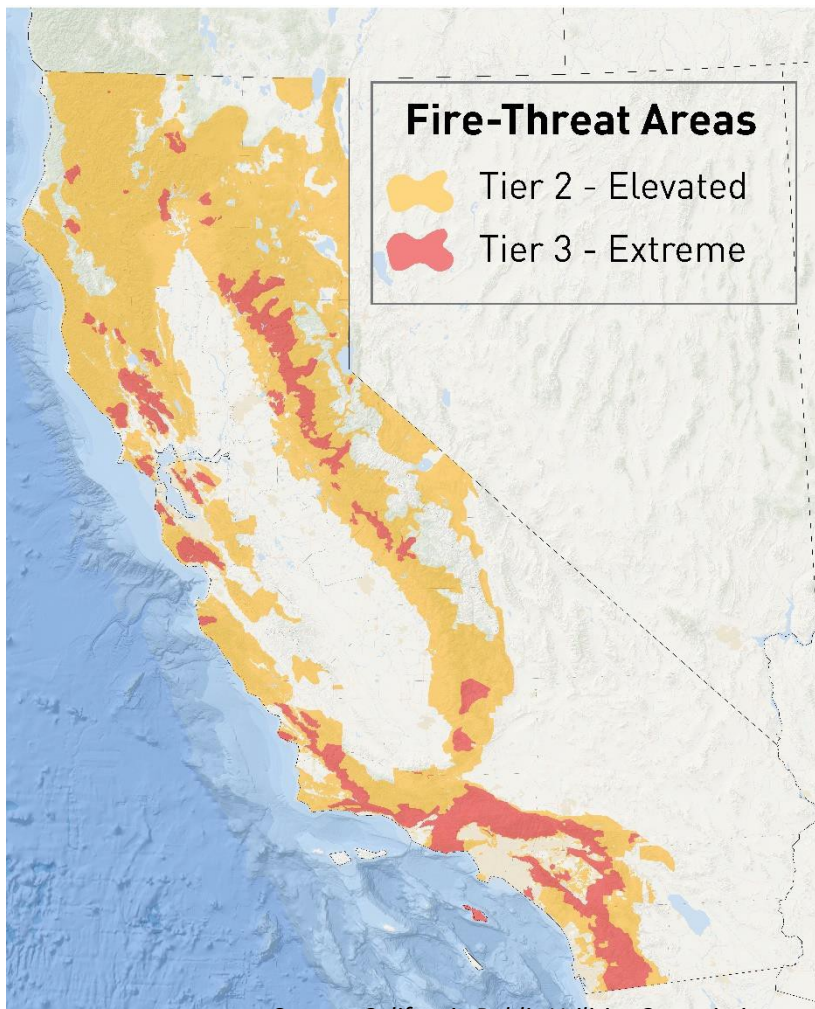
Customer Notifications

We will attempt to reach customers through **calls, texts and emails**. We will also use **social media** and keep **local news** and **radio outlets** informed and updated.

WHAT DOES THIS MEAN?

- ▶ PG&E will be shutting off power to areas recognized by the California Public Utilities Commission as either Elevated (Tier 2) or Extreme (Tier 3) areas of wildfire risk.
- ▶ This includes both transmission and distribution lines. Although a customer may not live or work in a high fire-threat area, their power may also be shut off if their community relies upon a line that passes through an area experiencing extreme fire danger conditions.
 - ▶ City of Sonoma is not in either Tier 2 or Tier 3 areas, but close to both.
 - ▶ Parts of Sonoma Valley include both Tier 2 and Tier 3 areas.
- ▶ Power would be shutoff during the event and potentially remain off for 2-3 days afterwards to allow PG&E to check power lines and ensure none have been compromised.
- ▶ Be prepared for up to 7 days without electricity.

Public Safety Power Shutoff (PSPS)



Source: California Public Utilities Commission

Beginning with the 2019 wildfire season, we are expanding our Public Safety Power Shutoff program to include **all electric lines that pass through high fire-threat areas – both distribution and transmission.**

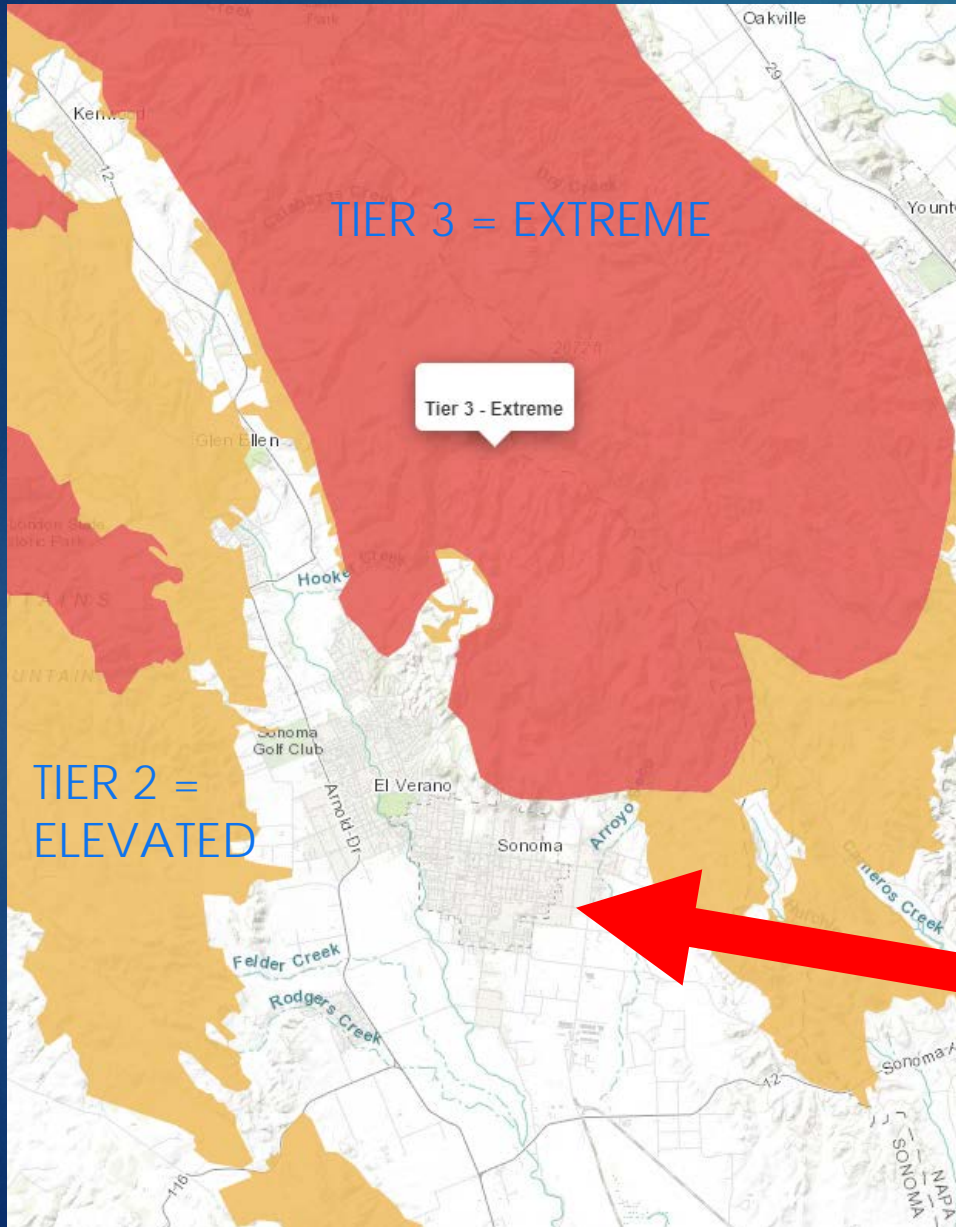
The most likely electric lines to be considered for shutting off for safety will be those that pass through **areas that have been designated by the CPUC as at elevated (Tier 2) or extreme (Tier 3) risk for wildfire.**

Because the energy system **relies on power lines working together** to provide electricity, **any of PG&E's more than 5 million electric customers could have their power shut off.**

IMPACT TO SONOMA

7

SONOMA RISK MAP:



LEGEND:

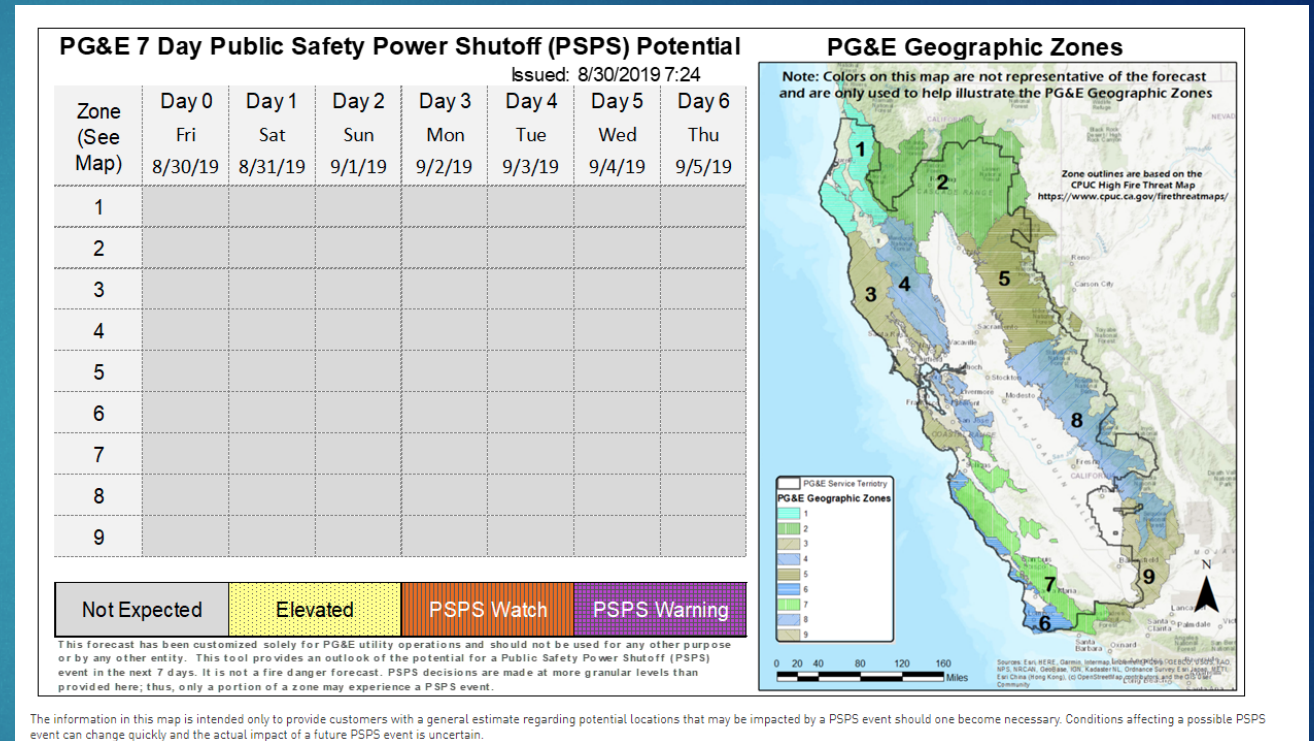
- ▶ Orange – Tier 2 Areas (elevated risk)
- ▶ Red – Tier 3 Areas (extreme risk)
- ▶ <https://ia.cpuc.ca.gov/firemap/>
- ▶ Impact expected to be greater in Sonoma County

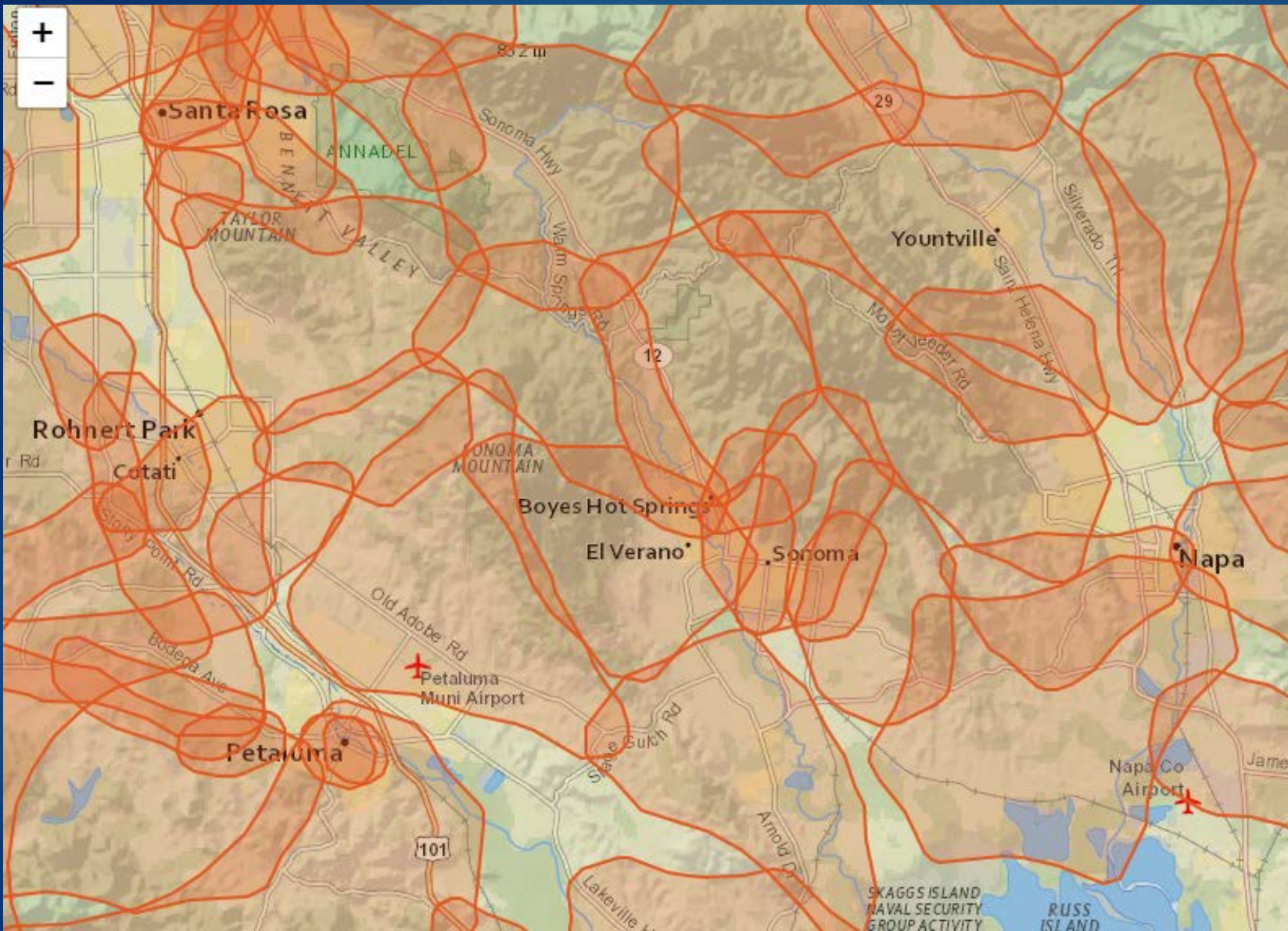
PG&E Released New Mapping Tools

► **PSPS 7-Day Forecast is live :**

► https://www.pge.com/en_US/safety/emergency-preparedness/natural-disaster/wildfires/pssp-weather-map.page?WT.mc_id=Vanity_weather

► During a PSPS event, more information will be available at [pge.com/psspupdates](https://www.pge.com/psspupdates).





PG&E PSPS Planning Outage Maps

PG&E PSPS Maps are now available – these are for planning purposes only, and there is currently no PSPS event planned: https://www.pge.com/en_US/safety/emergency-preparedness/natural-disaster/wildfires/pssp-event-maps.page

Challenges ...

10

- ▶ PG&E program and decision. No local control of this situation, but impacts fall on public agencies – and the community.
 - ▶ Limited knowledge on PG&E infrastructure -- don't know how and where electricity could be turned off.
 - ▶ Limited advanced notice and evolving PG&E parameters.
 - ▶ No direct funding for impacts at this time.
- ▶ Won't be considered a FEMA disaster. No Red Cross assistance.
- ▶ Don't know how widespread shutoffs will be – if significant, then there will be competition for resources and broader impacts.
- ▶ Power Shutoff could occur prior to a real wildfire, disabling public communication channels and stretching resources.

HOW WILL THIS IMPACT SONOMA?

11

- ▶ If this occurs, **NO POWER** for an extended period of time:
 - ▶ No **traffic lights or street lights** (signalized intersections become 4-way stops in accordance with CA vehicle code).
 - ▶ No functioning **gas stations or ATM machines** – unless on generator.
 - ▶ Expect increase in calls for services for Police and Fire.
 - ▶ **Medical emergencies** associated with sick and elderly people who can not use medical equipment.
 - ▶ **Communication challenges -- unknown impact on cell service**; cell towers could lose electricity. Cell companies stating they will bring in generators and continue service. For long event, may be no phone service except for traditional landlines.

Access and Functional Needs (Medical Needs)

12

What if I need Electricity and Battery-Dependent Assistive Technology and Medical Devices?

1. Update your contact information with PG&E at pge.com/mywildfirealerts or call 1-866-743-6589.
2. Follow FEMA's recommendations in its [Power Outage Information Sheet](#)
3. Review and update the American with Disabilities Act's [Emergency Power Planning Checklist](#) every 6 months

- ▶ PG&E will be communicating with customers in their Medical Baseline Program.
 - ▶ Phone outreach first; then door-to-door
 - ▶ Notification only (no exceptions to power outage)
 - ▶ Need to make your own plan; be ready to move to alternative location
- ▶ Health Facilities / Long Term Care Facilities -- Required to have emergency plan and protocols for safety of residents
- ▶ County Department of Public Health is actively involved in planning and communication with PG&E
- ▶ City / Vintage House preparing information packet for senior citizen and other AFN facilities

www.sonomacity.org/extended-power-outages/

Update and Information for the Community

How have we been preparing?

What to expect?

What can you do?

HOW ARE WE PREPARING?

14

City, Police, Fire, and Sonoma County Preparing

- ▶ Closely coordinating with Sonoma County Emergency Management Department
- ▶ Operational plans for PSPS being finalized
- ▶ Ensuring essential City, Police and Fire District services remain operational
 - ▶ Plan developed for continuity of services
 - ▶ Communicating with key community partners
- ▶ Testing capacity of emergency generators for water service and key City facilities
- ▶ Options for Cooling and Power Resource Centers
- ▶ Access and Functional Needs – public education and outreach to facilities.
- ▶ Continuing public information, education and outreach
- ▶ Outreach and coordination to business / non-profit / school community

Continuity of City Services

15

- ▶ Operations
 - ▶ Police Department / EOC – Permanent generator in place; ready to respond
 - ▶ Fire Department / All Stations -- Permanent generators in place; ready to respond
 - ▶ Public Works Corporation Yard -- Permanent generator in place; ready to respond
 - ▶ City Wells – Permanent or portable generators; ready to respond
 - ▶ City Hall – Portable generator for basic services
 - ▶ Carnegie – Portable generator for regular services
- ▶ Water service continues; gravity and generators ready as needed
- ▶ All employee meeting held to inform and prepare for employees to serve as “Disaster Service Workers”
- ▶ Purchasing new radios, researching satellite phones if no cell service

Cooling & Power Resource Options

16

- ▶ PG&E Community Resource Centers – tents with air conditioning, power, computers
- ▶ City/County - Public Options
 - ▶ Veterans Memorial Center – Transfer switch at facility being repaired and upgraded for HVAC. County has portable generator reserved.
 - ▶ City has back-up plan for 100 person tent with air conditioning and charging.
 - ▶ Next Year – Considering adding generator capacity to Vintage House, Library and City Hall; capacity exploration proposal.
- ▶ Community Partnerships
 - ▶ Hanna Boys Center and Sonoma Raceway – willing to open facilities in emergency

If/When a PSPS Event happens ...

17

- ▶ City/County staff meet weekly and monitor National Weather Service. PG&E will be updating their forecast map – any impact to Sonoma or Sonoma Valley.
- ▶ Warnings about upcoming Red Flag events to residents and key partners.
- ▶ Early notice to public and key partners.
- ▶ Order reserved portable generators for delivery.
- ▶ Prepare cooling / power resource centers if need to augment PG&E center.
- ▶ City will open its Emergency Operations Center when PG&E initiates a PSPS in the City; may need to provide mutual aid if in Sonoma Valley
- ▶ Information will be posted on the City's Emergency Updates web page ... plus "EMERGENCY ALERT" banner on home page when needed
- ▶ <https://www.sonomacity.org/emergency-updates/>

Community Outreach Began in June City/Chamber/PG&E

18

- ▶ June 21 – Business Outreach Meeting @ Lodge
- ▶ June 25 – 2 Sonoma Resident/Senior Focused Meetings @ Vintage House
- ▶ June 27 -- General Public Meeting
Finley Community Center, Santa Rosa, CA
- ▶ “About Town” July City E-newsletter
 - ▶ General Wildfire Action Guide preparation information
- ▶ General e-news updates

PG&E PUBLIC SAFETY POWER SHUTOFF Learn how to prepare for possible de-energization

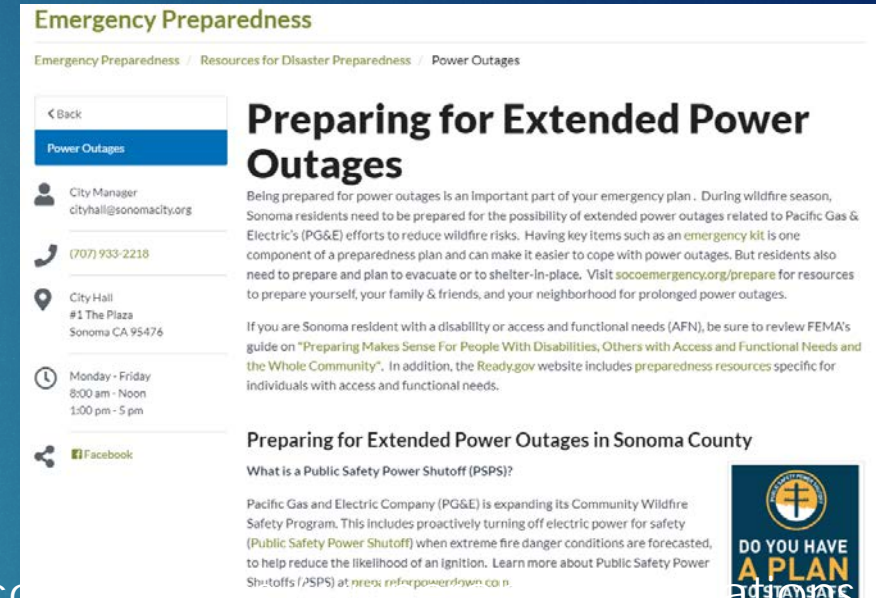


As part of their **Community Wildfire Safety Program**, Pacific Gas & Electric (PG&E) is implementing additional precautionary measures to help reduce the risk of wildfires. If extreme fire danger conditions threaten a portion of the electric system serving your community, it may be necessary to turn off electricity in the interest of public safety. This is called a Public Safety Power Shutoff (PSPS).

- **Sign Up for Alerts** from PG&E
- Get answers about what to expect before, during and after a Public Safety Power Shutoff on the PG & E **website**.
- **See how to stay cool during extreme heat**.
- **Watch a video** about how to safely operate a generator.
- Visit the statewide “The Power to Be Prepared” website at www.prepareforpowerdown.com for downloadable fact sheets and to learn more about the power of being prepared.

PSPS Public Information / Outreach

- ▶ Built web pages with resource links; button on home page; Home page “EMERGENCY ALERT” banner available when needed
 - ▶ <https://www.sonomacity.org/extended-power-outages/>
- ▶ Initiated and continuing social media outreach
- ▶ Connected with County and Bay Area PIOs
- ▶ Red Flag ready to be flown at City Hall, Police and Fire Department
- ▶ Coordinating with KSVY 91.3 FM for outreach
- ▶ Working with Vintage House to distribute packets senior living communities / vulnerable populations
- ▶ Chamber, SVVB and SVVGA business education and needs
- ▶ Generator information -- Extensive information on PG&E website;
 - ▶ Most solar won't work unless separate battery; may require electrical permit.



Event Alert / Communication

20

▶ BEFORE

- ▶ Make sure PG&E has your cell phone number for notification if a PSPS will be called.
- ▶ Register for all local emergency alerts where you live and work – Nixle and SoCoAlert
- ▶ Subscribe to City e-news updates at <https://www.sonomacity.org/subscribe>

▶ DURING

- ▶ Keep devices charged if possible; use battery backup devices and available power resource locations
 - ▶ Using texts vs. phone calls reduces drain on your cell phone battery
- ▶ City = <https://www.sonomacity.org/emergency-updates> (or use Alert Bar on home page)
 - ▶ Social media = Facebook (@CityOfSonoma), Instagram (@SonomaCity), and NextDoor
- ▶ Sonoma County = <https://socoemergency.org/category/warnings-and-updates/>
- ▶ KSVY 91.3 FM (car radio, battery-operated radio, phone app)
- ▶ Call 9-1-1 **for emergencies only**; please do not call 9-1-1 to for power outage updates.

Sign Up for Emergency Alerts

Sign up to receive alerts to your phone and/or email. For **SoCo Alert**, use the link or call (707)565-1369 for more information. For **Nixle**, use the link or TEXT YOUR ZIP CODE TO 888777 to opt in for mobile alerts. Make sure your family, friends, and neighbors also sign up!



Sign up for SoCo Alert



Sign up for Nixle
alerts



Sign up for PG&E
Shutoff Alerts

Where to go for Emergency Warnings and Updates:

- **SoCo Emergency:** If there is an active emergency in Sonoma County, detailed information will be posted to [SoCoEmergency.org](https://www.sonomacounty.org/emergency), the Sonoma County Emergency and Preparedness Information website, by the County of Sonoma.
- **City of Sonoma Emergency Updates:** The City of Sonoma will post information regarding warnings and emergency updates to [the City's Emergency Updates page](#).

Social media can play an important role in sharing information before, during, and after emergencies, and if you are active on social media it's a good idea to follow facebook pages for the [City of Sonoma](#), [Sonoma Police Department](#), [Sonoma Valley Fire & Rescue](#), [County of Sonoma](#), [Sonoma Valley Hospital](#) and [Sonoma Sheriff](#). The City of Sonoma may also share information through [Nextdoor](#). Due to potential delays in posting information, please **do not rely on social media as your primary notification of a local emergency**.

✓ SIGN UP
NOW!

<https://www.sonomacity.org/departments/emergency-prep/>



Residents

Sarah Tracy, Public Information

<https://www.sonomacity.org/residents-extended-power-outages/>

- ▶ Make sure your home and family are prepared for a PSPS event, so that they are safe and you are available for work.
- ▶ Have a plan
 - ▶ www.readyforwildfire.org
 - ▶ www.adata.org (emergency planning for people with battery-dependent medical devices)
 - ▶ [Family Emergency Communication Plan](#)
- ▶ Prepare to be without essential services for up to **one week**; back-up location to go visit if extended outage.
- ▶ If you have children in school, what is your plan if school is cancelled due to a power outage?



Business Community

23

Mark Bodenhamer, Chamber of Commerce

<https://www.sonomacity.org/businesses-extended-power-outages/>

- ▶ Business Workshops
 - ▶ Held business workshop in last June – 25 businesses attended
 - ▶ September 24 11:30-1:00; Chamber's *Lunch and Learn* Hosting Sonoma County's Emergency Preparedness staff "Create a Plan for Emergency Preparedness"
- ▶ Chamber Outreach about Business Knowledge / Preparation
 - ▶ Met in person with 50 key businesses (banks, gas stations, grocery stores, pharmacies, pet supplies, hardware stores)
 - ▶ Many businesses unaware; new situation; most don't have any resilient infrastructure
 - ▶ Chamber building list of generator supported businesses; building emergency contact lists
 - ▶ Generator or Other Energy Infrastructure
 - ▶ Business Information Website and Information Packet - Chamber, SVVG, SVVB

FREE

SONOMA READY DAY

EMERGENCY PREPAREDNESS FAIR



- Emergency resources
- Great food trucks
- Activities for kids
- Emergency vehicles on display
- Informational talks
- Speak with first responders

Admission and parking are free.

SUNDAY
SEPTEMBER 8th | **10 a.m. - 3 p.m.**
Sonoma County Fairgrounds

Thousands
*of emergency kits
 will be given away.*



SonomaReadyDay.org



Sonoma County Emergency Preparedness Fair

September 8 – 10:00 AM – 3:00 PM
 For All County Residents and
 Businesses

Sonoma County Testing Emergency Alerts

September 5 – 10:00-11:10 AM

1. Wireless Emergency Alert (WEA)
2. SoCoAlert
3. National Weather Service NOAA
 Weather Radio

What can I do?

- ▶ Have a personal plan to be ready – **DO IT NOW**
 - ▶ Information on City's web site
 - ▶ If extended outage, have a place out of the area to go to
- ▶ Cash Up / Gas Up / Charge Up / Stock Up
 - ▶ Get cash
 - ▶ Gas your car
 - ▶ Charge up your necessary electronic equipment
 - ▶ Stock up on water, non-perishable food and medicine for 7 days
- ▶ Contact your neighbors and build a support network to help each other

PSPS Cost Estimates – Funding Request

ONE TIME INVESTMENTS	
Cooling and Power Resource Center – Supplies and Materials	\$5,000
Facility Assessment for Future Generator Support <i>An evaluation of City Hall, Vintage House, Library to add portable or permanent generator support in future – would allow them to serve as Cooling Center, Respite Center or Emergency Shelter.</i>	\$16,000
KSVY – Radio Generator <i>City provide a one-time financial contribution to SVCC for generator infrastructure at their radio and tower locations. KSVY has also applied for a grant to Rebuild North Bay for funding.</i>	\$15,000
EOC Satellite Phones / Telecommunications Access Point	\$5,000
CONTINGENCY FUNDING IF EXTENDED POWER OUTAGE EVENT OCCURS	
Contingency <ul style="list-style-type: none"> ▪ <i>Generator rentals for Carnegie and City Hall as needed (\$10-15,000/time)</i> ▪ <i>Temporary tent for cooling center including air conditioning and power (\$10-15,000/time)</i> ▪ <i>Other items that come up; staff recommends some contingency funding. (\$10,000)</i> 	\$30,000 - 40,000
TOTAL ESTIMATE	\$71,000-\$81,000



BE READY!!

The decision to activate a PSPS will not be taken lightly, but the probability is likely after the devastating fires in Sonoma County and Paradise.

Please take steps to get ready!!

<https://www.sonomacity.org/extended-power-outages/>

