

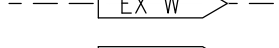
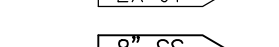
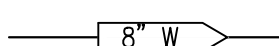
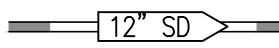






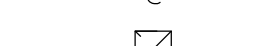

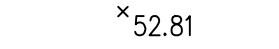
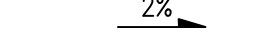


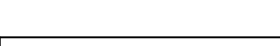




DENNIS AFTERGUT TRUST
2018-056945

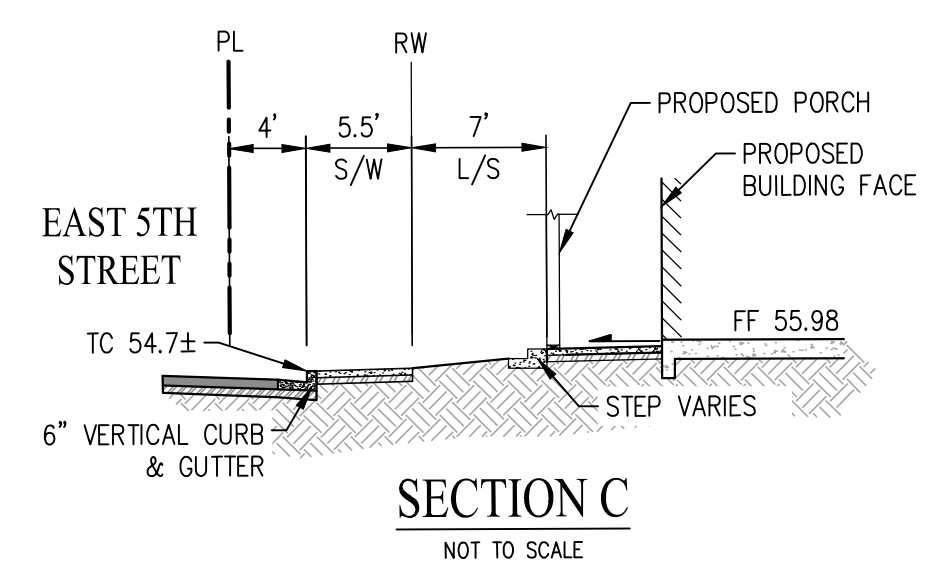
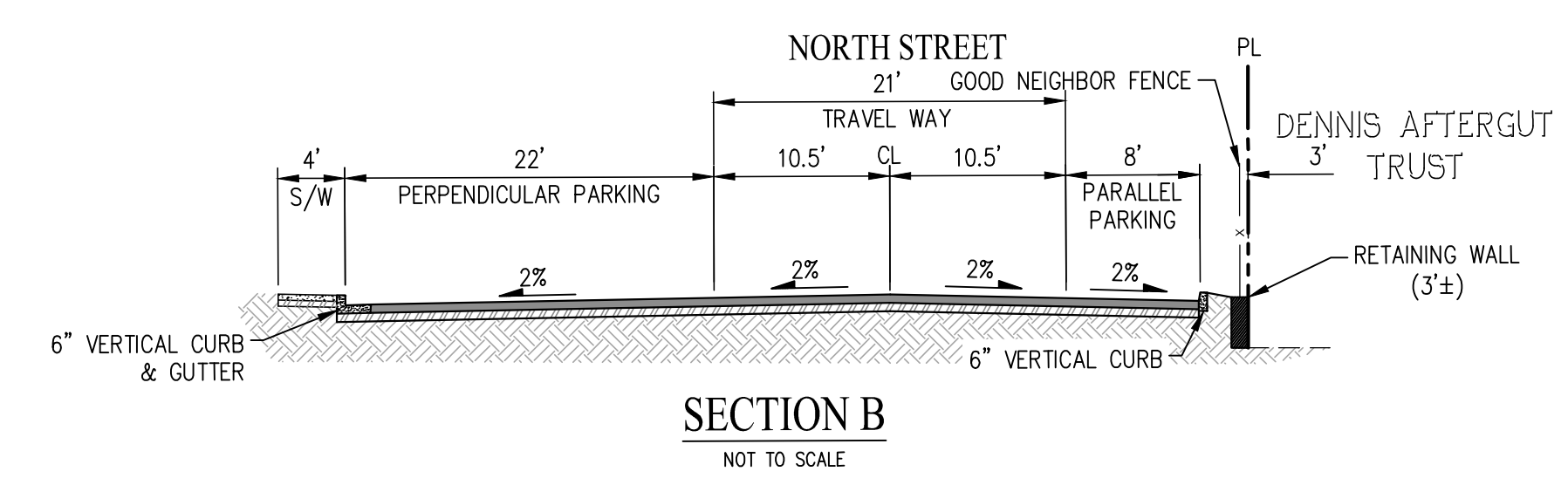
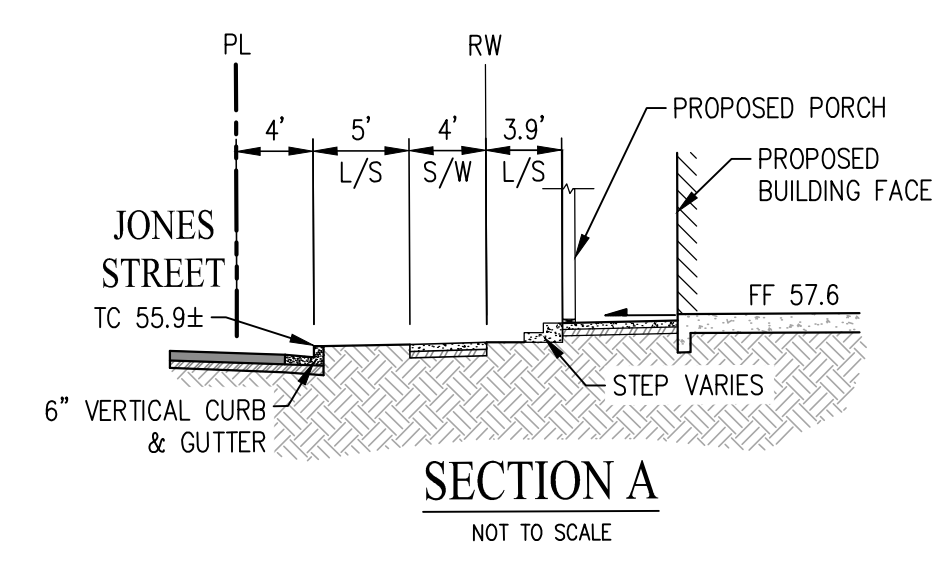
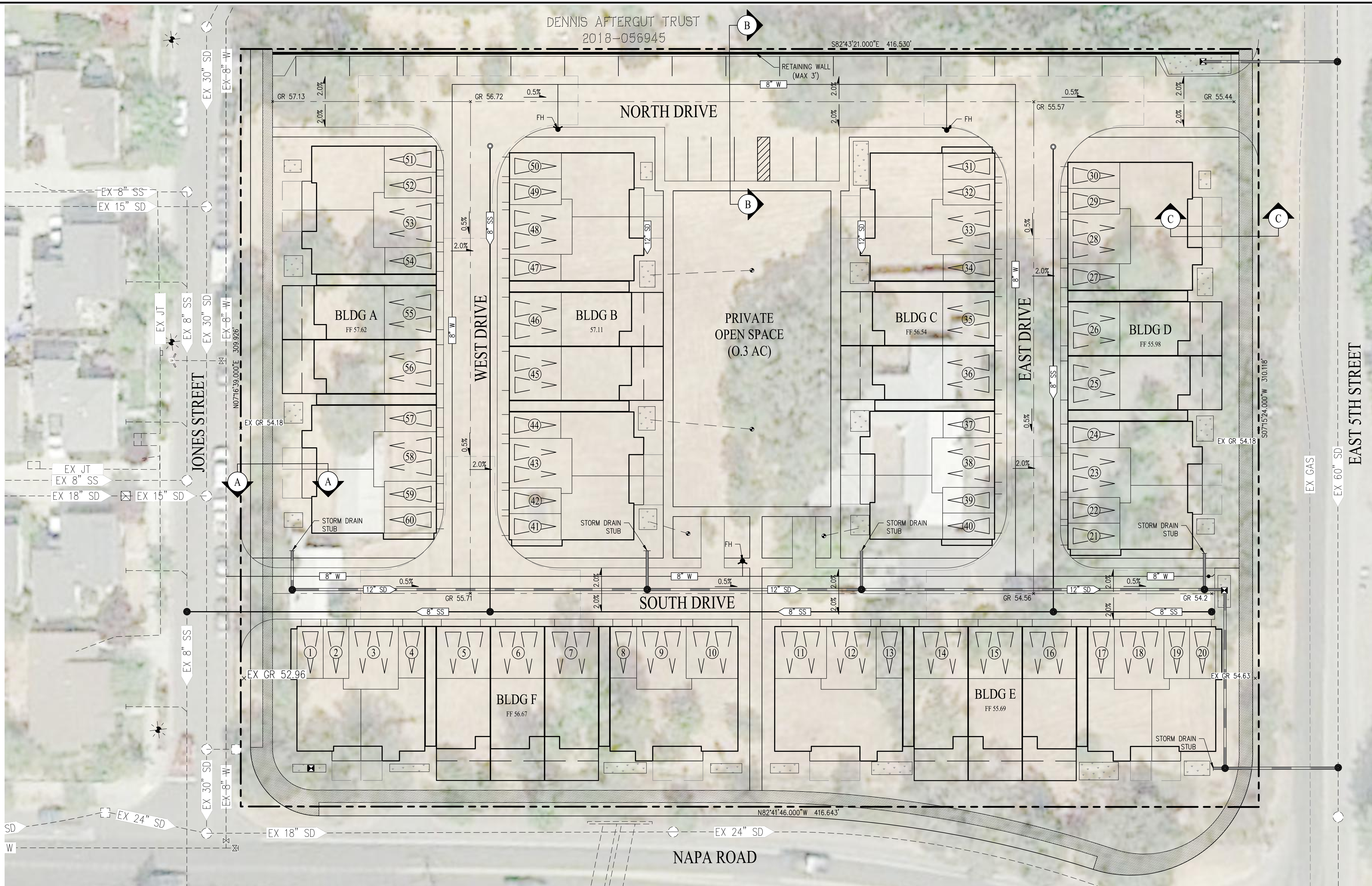
S82°43'21.000"E 416.530'

LEGEND

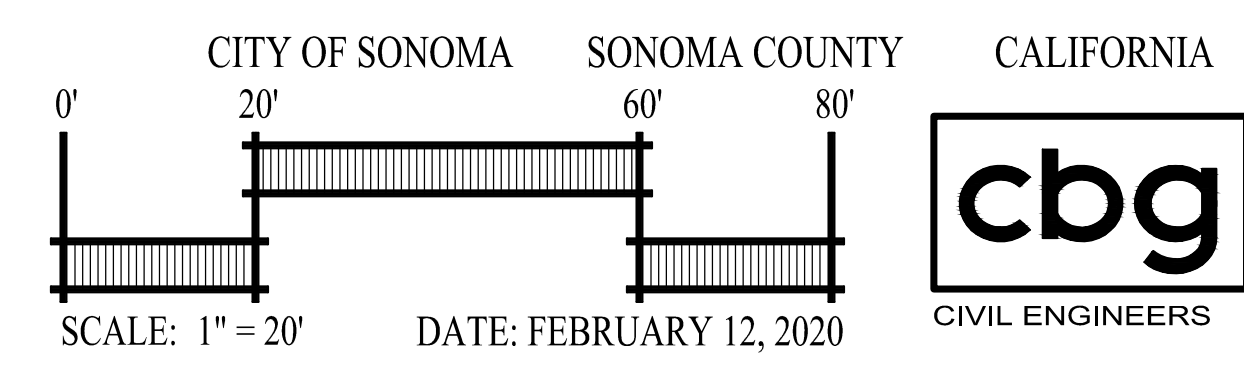
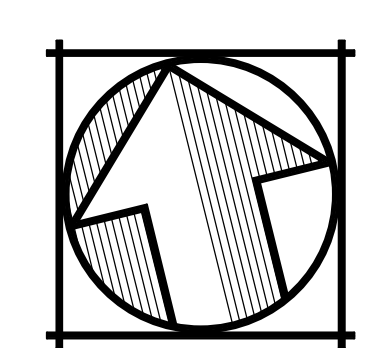
-  EX SD
-  EX SS
-  EX W
-  EX JT
-  8" SS
-  8" W
-  12" SD
-  RETAINING WALL
-  SANITARY SEWER CLEAN OUT
-  WATER BLOW OFF VALVE
-  FIRE HYDRANT
-  MANHOLE
-  EXISTING STORM DRAIN MANHOLE
-  EXISTING STORM DRAIN CATCH BASIN
-  EXISTING FIRE HYDRANT
-  EXISTING STORM DRAIN FIELD INLET
-  AREA DRAIN
-  52.81
-  2%
-  1
-  BIO-RETENTION AREA

**ESTIMATED ROUGH GRADING
CUT/FILL QUANTITIES**

CUT	760 CY
FILL	7500 CY
NET	6740 CY (FILL)



**PRELIMINARY GRADING &
UTILITY PLAN**



CITY OF SONOMA SONOMA COUNTY CALIFORNIA

SAN RAMON • (925) 866-0322
SACRAMENTO • (916) 375-1877
WWW.CBANDG.COM

CIVIL ENGINEERS • SURVEYORS • PLANNERS