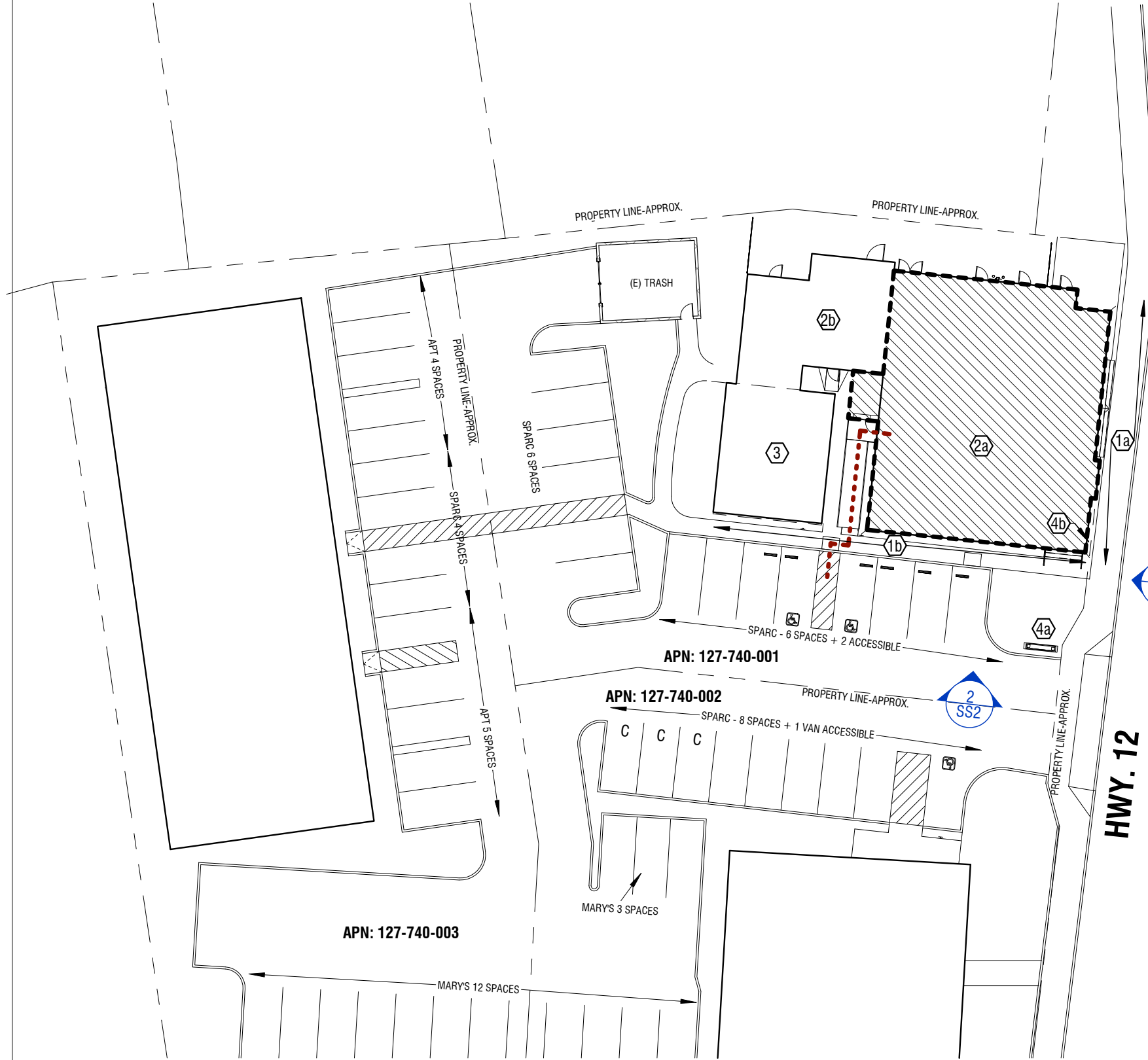


1/19/2021 5:16:40 PM

1 SITE PLAN - SITE SIGNAGE

1" = 30'-0"



SHEET KEYNOTES

- ①a PRIMARY STREET FRONTAGE: 62'-8"
- ①b SECONDARY FRONTAGE: 89'-2"
- ②a APPROX. EXTENT OF BUILDING RENOVATION, SHOWN HATCHED FOR CLARITY
- ②b PORTION OF (E) BUILDING, NIC.
- ③ (E) OUTDOOR TERRACE
- ④a (E) SITE SIGNAGE RECONFIGURED, SEE EXT. ELEVATIONS AND SIGNAGE ELEVATIONS FOR ADDITIONAL INFORMATION
- ④b (N) BLDG. SIGNAGE, SEE EXT. ELEVATIONS AND SIGNAGE ELEVATIONS FOR ADDITIONAL INFORMATION

SIGN AREA CALCULATIONS

NUMBER OF SIGNS: 2

- (E) PRIMARY SITE SIGN (NON-ILLUMINATED)
 1. 135 SF
 2. DOUBLE-SIDED
 3. (E) DOUBLE-SIDED NEON "OPEN" SIGNAGE TO REMAIN
 4. MATERIAL / COLORS: (E) WOOD SIGN W/ CONC. BASE. SEE SHEET SS4 FOR ADDITIONAL INFORMATION
- SECONDARY BUILDING SIGN (NON-ILLUMINATED)
 1. 10.1 SF
 2. SINGLE-SIDED
 3. LOCATION: ANCHORED AT NEW WD. OVERHANG AT ENTRY
 4. MATERIAL / COLORS: ALUMINUM. SEE SHEET SS4 FOR ADDITIONAL COLOR INFORMATION.

AGGREGATE SIGN AREA:

- PRIMARY STREET FRONTAGE = 62'-8"
 1. FIRST 30 FT = 3 SF / 5 LF = 18 SF
 2. EXCESS OF 30 FT = 2 SF / 5 LF = 16 SF
- SECONDARY FRONTAGE = 87'-1"
 1. 1 SF / 5 LF = 17.4 SF

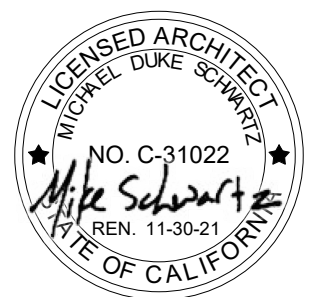
TOTAL PRIMARY AND SECONDARY SF ALLOWED = 51.4 SF

TOTAL SF IN SCOPE OF WORK = 98.1 SF*

*PRIMARY SIGNAGE: AS EXISTING, NOT REQUIRED TO MEET CURRENT SIZE REQ'S
 SECONDARY SIGNAGE: MEETS MAX. SIGN SIZE REQUIREMENTS PER CITY REGULATIONS

S/A
SCHWARTZ ARCHITECTURE
 1653 FINLAW ST.
 SANTA ROSA, CA 95404
 TEL: 707.478.4949

SPARC - SONOMA - TI
SIGNAGE APPLICATION
CANNABIS DISPENSARY
 19351 Sonoma Hwy
 Sonoma, CA 95476



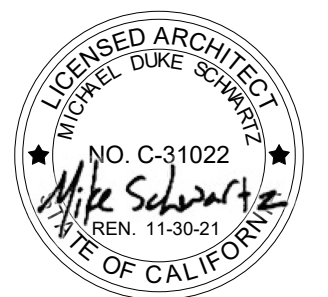
Issued For
REVIEW

SITE PLAN - SITE
SIGNAGE

Project No.: 20-029
 Drawn By: S/A
 Issue Date: 01-19-2021

Sheet
SS1

SPARC - SONOMA - TI
SIGNAGE APPLICATION
CANNABIS DISPENSARY
 19351 Sonoma Hwy
 Sonoma, CA 95476

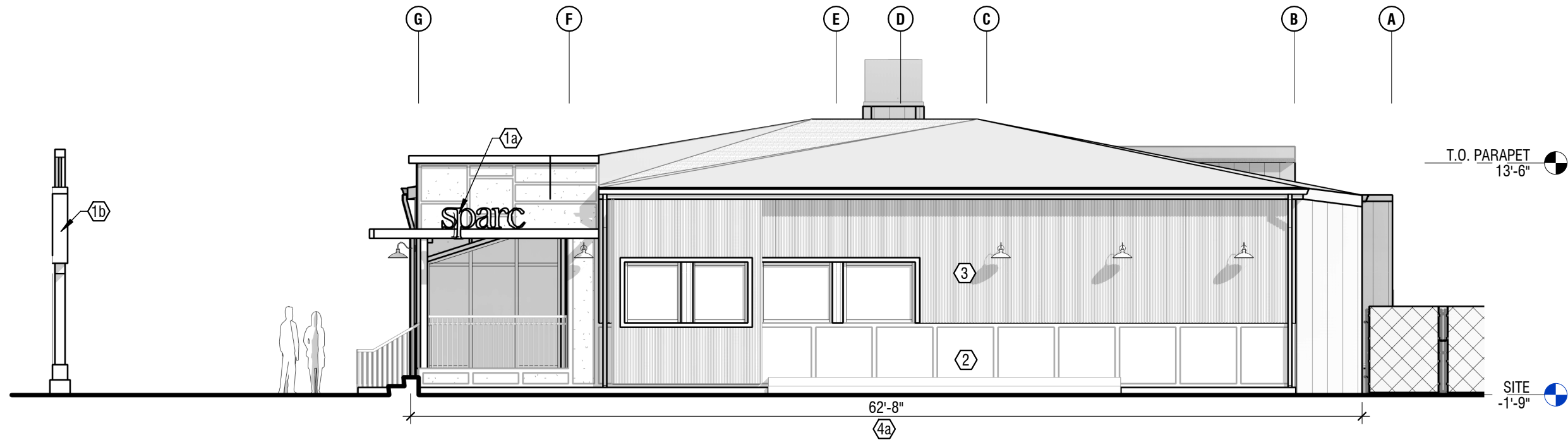


Issued For
 REVIEW

**EXT ELEVATIONS -
 SITE SIGNAGE**

Project No.: 20-029
 Drawn By: S/A
 Issue Date: 01-19-2021

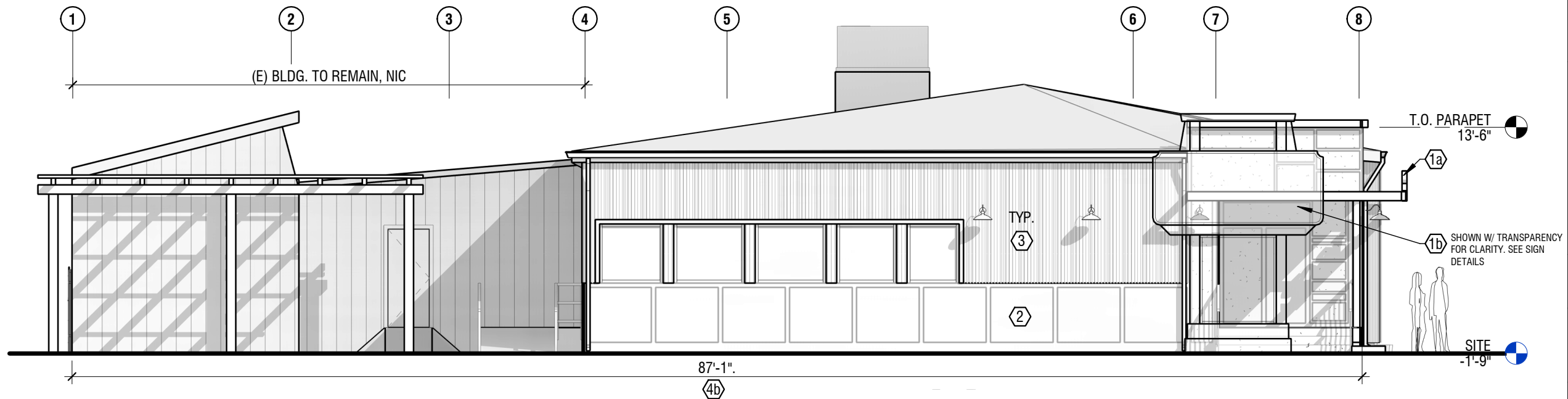
Sheet
SS2



1 EAST ELEVATION - SITE SIGNAGE
 1/8" = 1'-0"

SHEET KEYNOTES

- ①a (N) BLDG. SIGNAGE, SEE SHEET SS4, SIGNAGE DETAILS. SEE SIGN AREA CALCULATIONS.
- ①b (E) SITE SIGNAGE RECONFIGURED, SEE SHEET SS4, SIGNAGE DETAILS. SEE SIGN AREA CALCULATIONS.
- ② (N) BLDG. FINISH 'A' PER SEPARATE USE PERMIT
- ③ (N) BLDG. FINISH 'B' PER SEPARATE USE PERMIT
- ④ PRIMARY STREET FRONTAGE: 62'-8"
- ⑤ SECONDARY FRONTAGE: 87'-1"



2 SOUTH ELEVATION - SITE SIGNAGE
 1/8" = 1'-0"



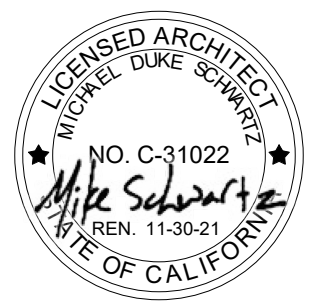
1 EXISTING EXTERIOR - SITE SIGNAGE
 1 1/2" = 1'-0"



2 PROPOSED BUILDING SIGNAGE
 12" = 1'-0"

S/A
 SCHWARTZ
 ARCHITECTURE
 1653 FINLAW ST.
 SANTA ROSA, CA 95404
 TEL: 707.478.4949

SPARC - SONOMA - TI
SIGNAGE APPLICATION
 CANNABIS DISPENSARY
 19351 Sonoma Hwy
 Sonoma, CA 95476



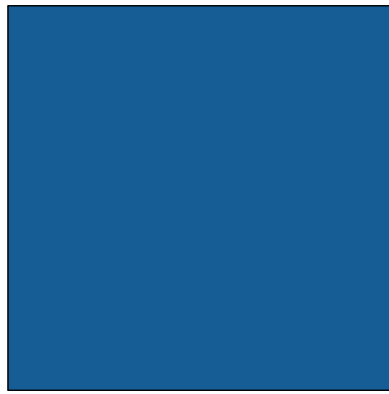
Issued For
 REVIEW

**EXISTING / PROPOSED
 - SIGNAGE**

Project No.: 20-029
 Drawn By: S/A
 Issue Date: 01-19-2021

Sheet
SS3

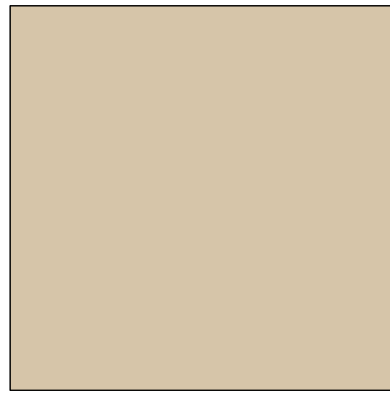
1/19/2021 5:16:46 PM



DE5845 - BLUE (P1)



DEA187 - BLACK (P2)



DE6199 - TAN (P3)

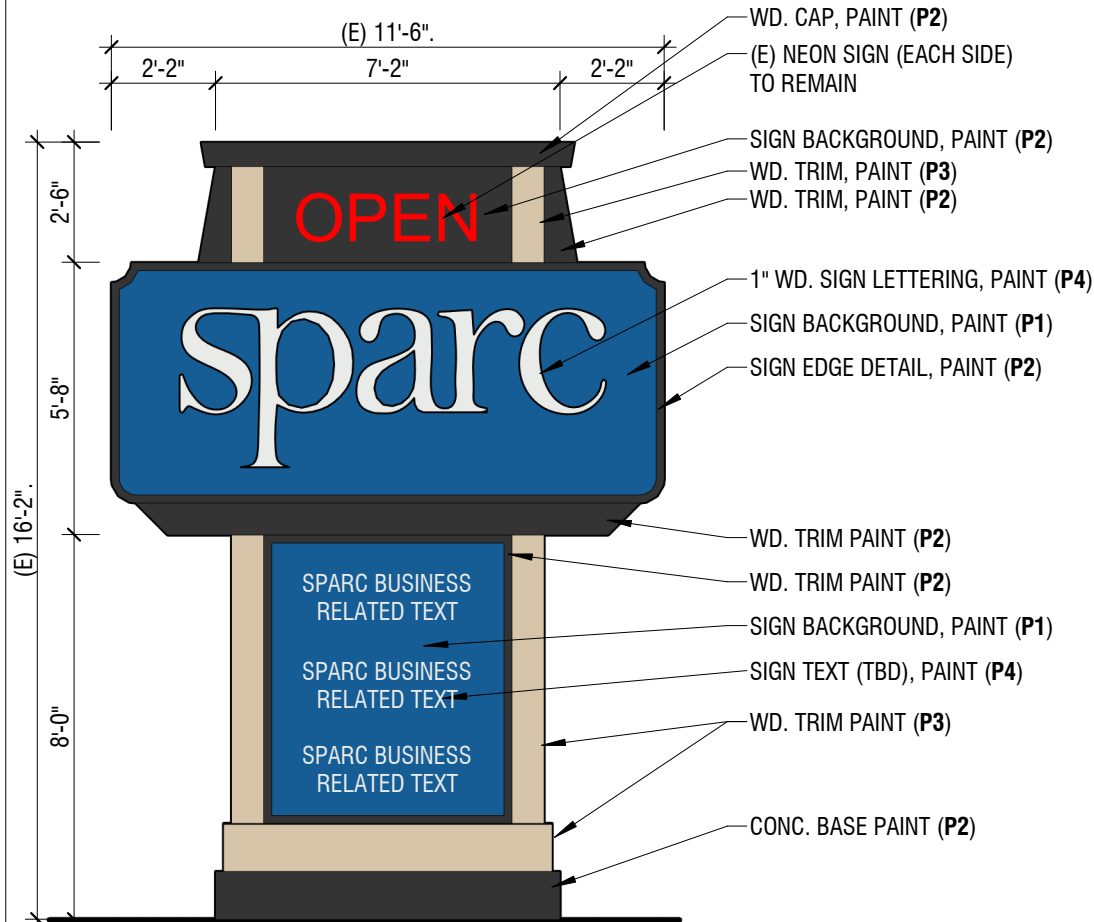


DEW385 - WHITE (P4)

NOTE:

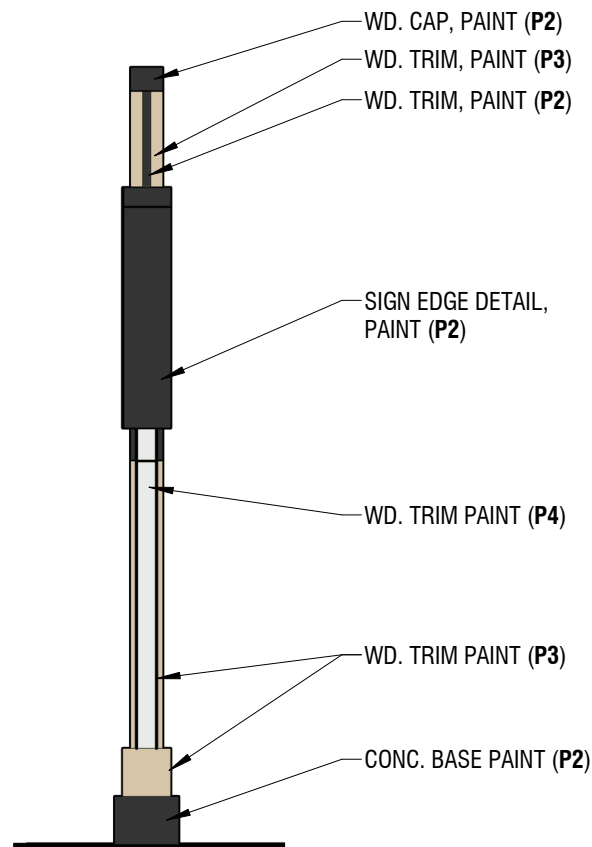
- 1. COLORS ARE DUNN EDWARDS UON
- 2. COLORS MATCH THOSE PROPOSED FOR BUILDING. BUILDING UNDER SEPARTE PERMIT

SIGNAGE COLOR SCHEME



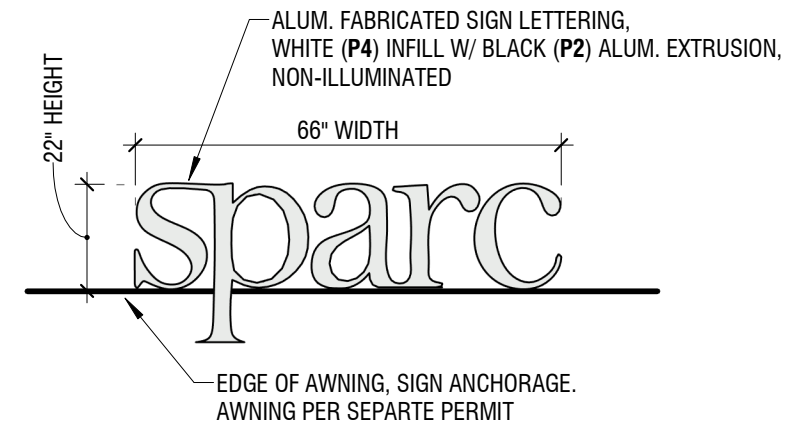
1 RECONFIGURED SITE SIGNAGE - FRONT/BACK

1/4" = 1'-0"



2 (E) SITE SIGNAGE - SIDE

1/4" = 1'-0"

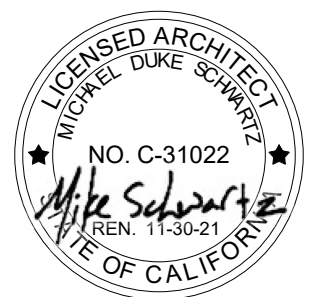


3 (N) BLDG. SIGNAGE - FRONT/BACK

1/4" = 1'-0"

S/A
 SCHWARTZ
 ARCHITECTURE
 1653 FINLAW ST.
 SANTA ROSA, CA 95404
 TEL: 707.478.4949

SPARC - SONOMA - TI
SIGNAGE APPLICATION
 CANNABIS DISPENSARY
 19351 Sonoma Hwy
 Sonoma, CA 95476



Issued For
REVIEW

**SITE SIGNAGE -
DETAILS**

Project No.: 20-029
 Drawn By: S/A
 Issue Date: 01-19-2021

Sheet
SS4