

EST. **SONOMA** 1931
CHEESE FACTORY

PROPOSED EXTERIOR MODIFICATIONS



EXISTING PHOTOGRAPH FOR REFERENCE ONLY

DESIGN REVIEW DRAWINGS

2 WEST SPAIN STREET, SONOMA, CA. 95476
APN: 018-162-004

SONOMA CHEESE FACTORY PROPOSED EXTERIOR MODIFICATIONS

THE FOLLOWING PROPOSED EXTERIOR MODIFICATIONS ARE THE SUBJECT OF THIS DESIGN REVIEW APPLICATION:

WESTSIDE ALLEY MODIFICATIONS & NEW ACCESSIBLE PATH OF ENTRY

- THE CURRENT WESTSIDE SERVICE ALLEY PAVING WILL BE REMOVED, RE-GRADED, AND REPLACED WITH A NEW ACCESSIBLE BRICK PAVED PEDESTRIAN WALKWAY LEADING TO THE NEW ACCESSIBLE STORE ENTRY AT THE CURRENT WESTSIDE OFFICE DOOR
- THE NEW PEDESTRIAN WALKWAY WILL INCLUDE A NEW CONCRETE CURB AND DRAINAGE WAY, NEW IN-GROUND GREASE INTERCEPTORS WITH TRAFFIC RATED LIDS
- NEW SECURITY FENCE AND GATE TO UTILITY YARD

MODIFICATIONS TO BUILDING EXTERIOR

- REPLACEMENT OF EXISTING SOLID EXTERIOR OFFICE DOOR WITH A NEW STORE DOOR WITH VISION PANEL AND SIDE LITE
- NEW WESTSIDE BLADE SIGN ADJACENT TO THE NEW ACCESSIBLE ENTRY. THIS SIGN AND ALL OTHER SIGNAGE MODIFICATIONS WILL BE COVERED BY A SEPARATE DESIGN REVIEW APPLICATION
- NEW BUILDING MOUNTED BARN LIGHTS AT WESTSIDE PEDESTRIAN WALK. THESE LIGHTS WILL MATCH EASTERN PATIO LIGHTS
- RELOCATION & REPLACEMENT OF METAL GATE AT WEST ALLEY
- NEW COVERED & ENCLOSED WASTE ENCLOSURE AT THE UTILITY YARD. THE NEW WASTE ENCLOSURE WILL BE LOCATED DEEPER INTO THE SITE FROM ITS CURRENT LOCATION
- REPLACEMENT IN-KIND OF EXISTING OVERHEAD GAS HEATERS AT EAST PATIO
- REPLACEMENT IN-KIND OF EXISTING BARN LIGHTS AT EAST PATIO
- NEW ACCESSIBLE PATH OF TRAVEL FROM CASA GRANDE PARKING LOT TO NORTH STAFF ENTRY DOOR INCLUDING RE-GRADING OF (E) CONCRETE SLAB
- REMOVAL & REPLACEMENT OF ALL ROOFTOP EQUIPMENT & PLATFORMS, DUCTING, AND FANS
- NEW METAL SCREEN TO VISUALLY OBSURE THE MECHANICAL EQUIPMENT MOST VISIBLE FROM NEIGHBORING STATE PARK
- NO CHANGES TO EXISTING PARKING COUNT

EXISTING CONDITIONS



NORTH ELEVATION - FROM CASA GRANDE PARKING LOT



EAST ELEVATION (PARTIAL) - FROM STATE HISTORIC PARK



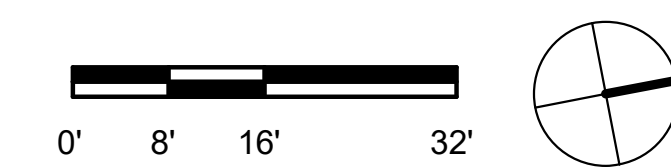
SOUTH ELEVATION - FROM HISTORIC SONOMA PLAZA



WEST ELEVATION (PARTIAL) - FROM ALLEY

NO CHANGES ARE PROPOSED TO THE BUILDING'S HISTORIC CHARACTER DEFINING FEATURES

REFERENCE PHOTOGRAPHS



SITE PLAN - EXISTING



NEW BRICK WALKWAY



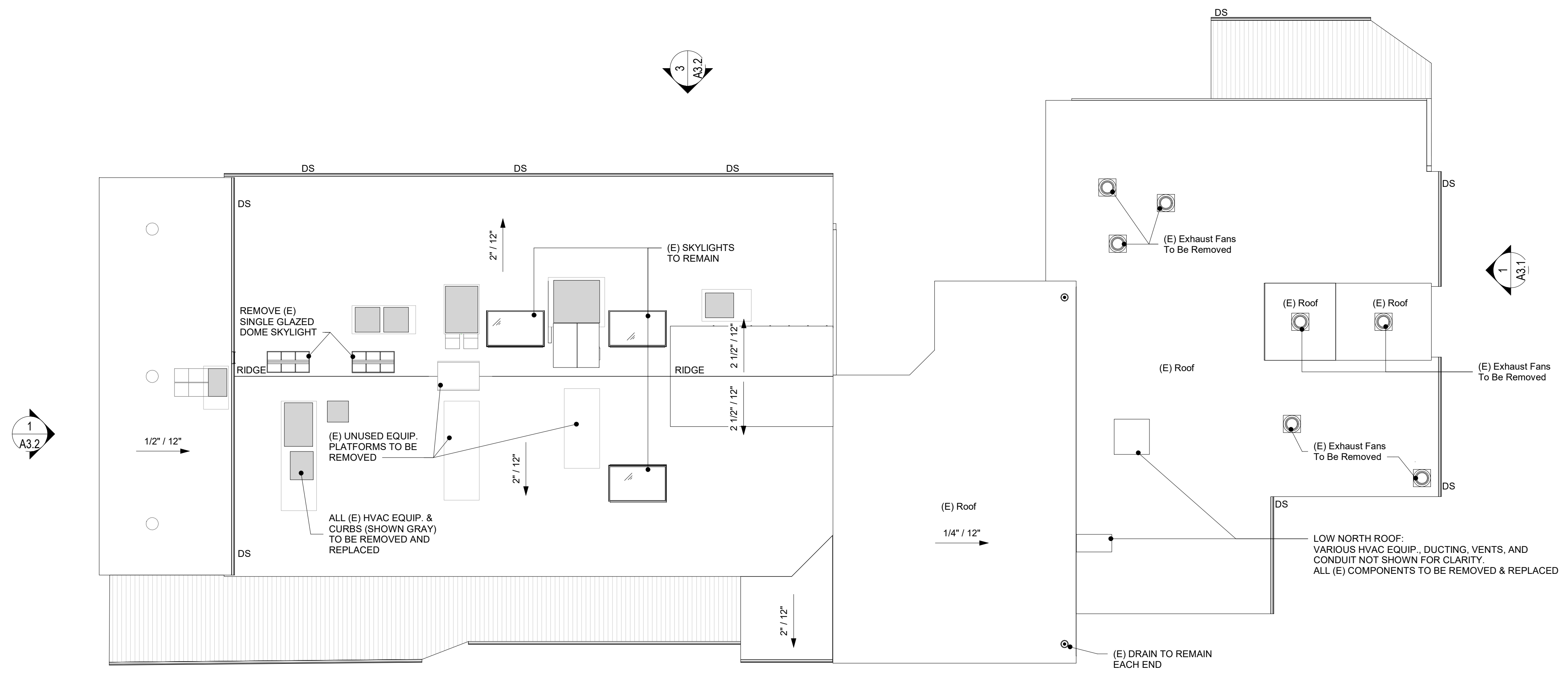
LIGHT GRAY BODY - HERRINGBONE
B.O.D. BELDEN PLANK



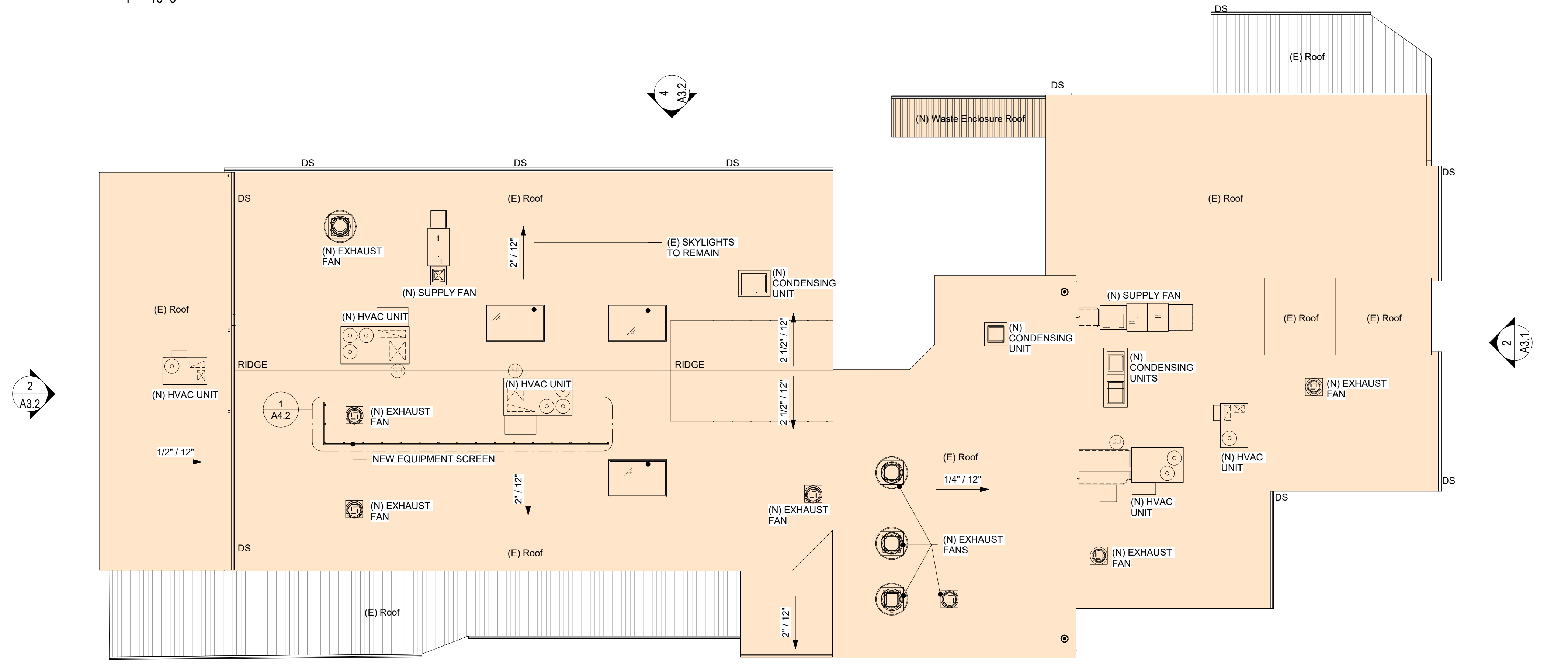
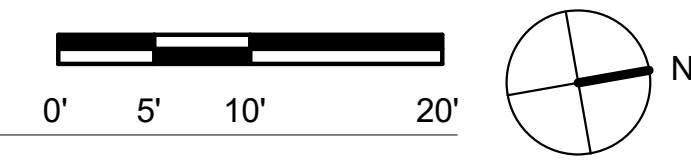
DARK GRAY PERIMETER BANDING - ORTHOGONAL
B.O.D. BELDEN FIELD GRAY



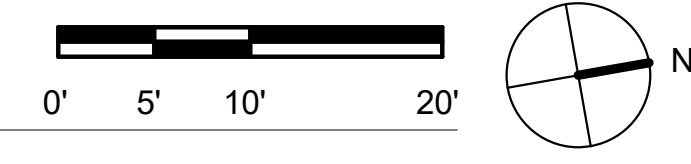
SITE PLAN - PROPOSED



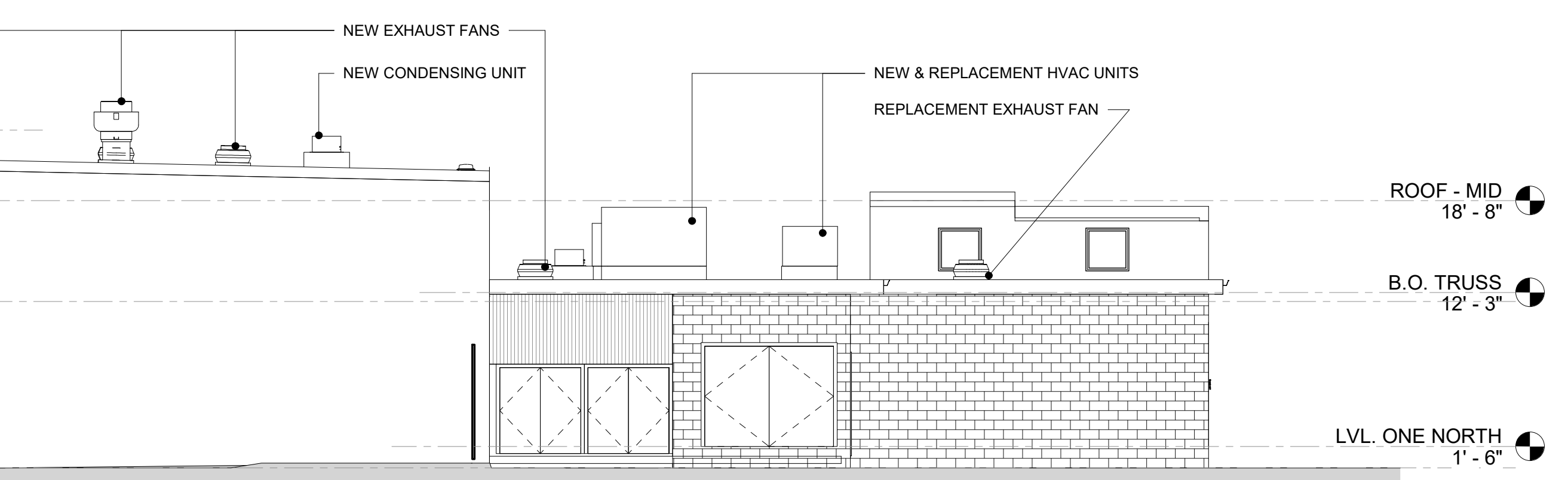
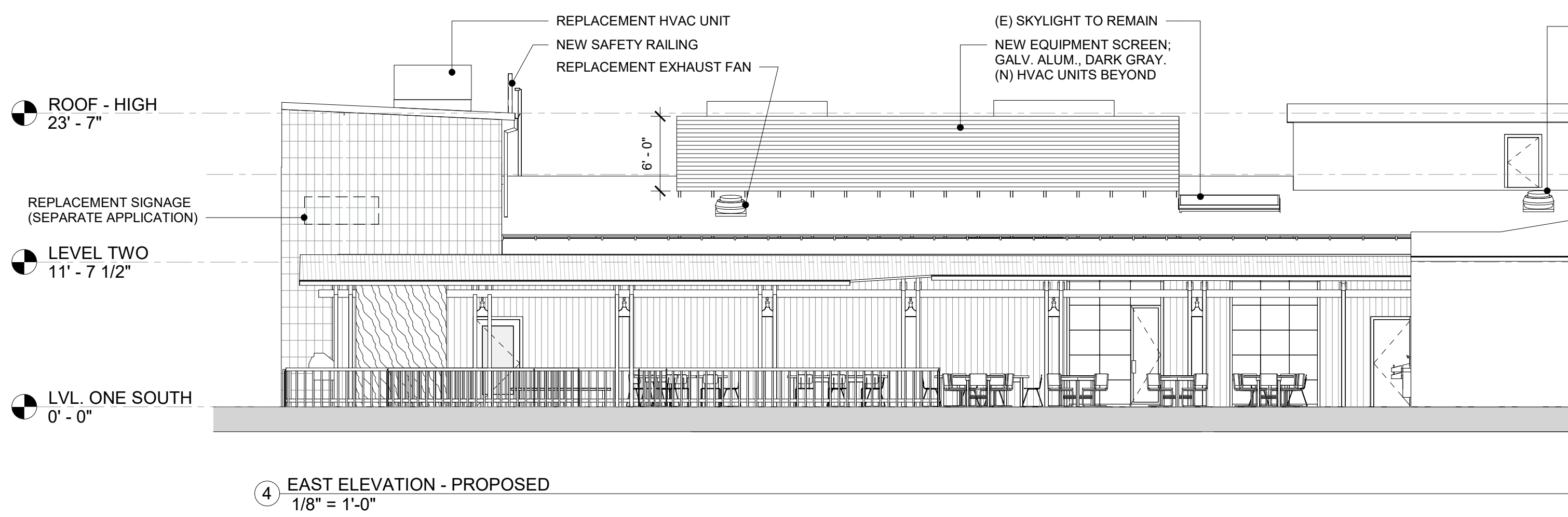
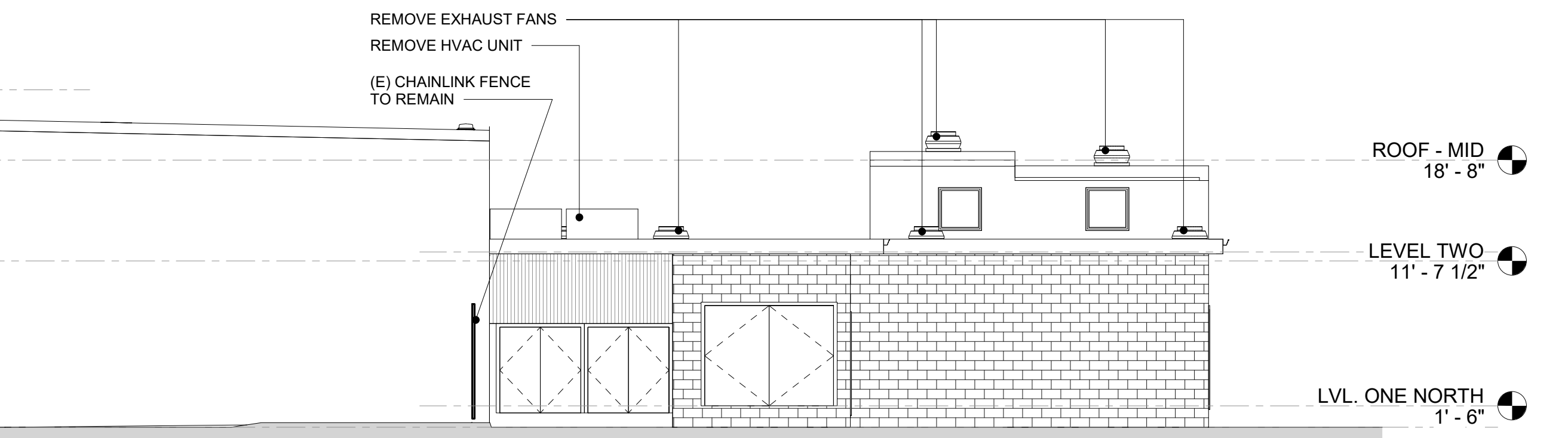
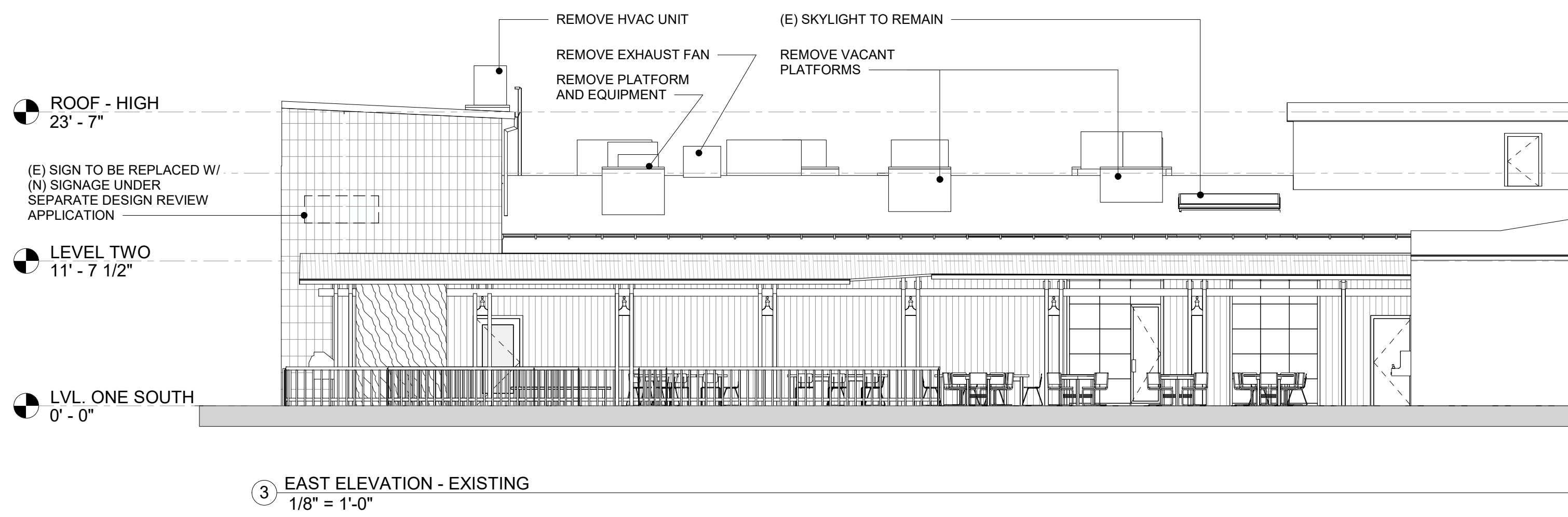
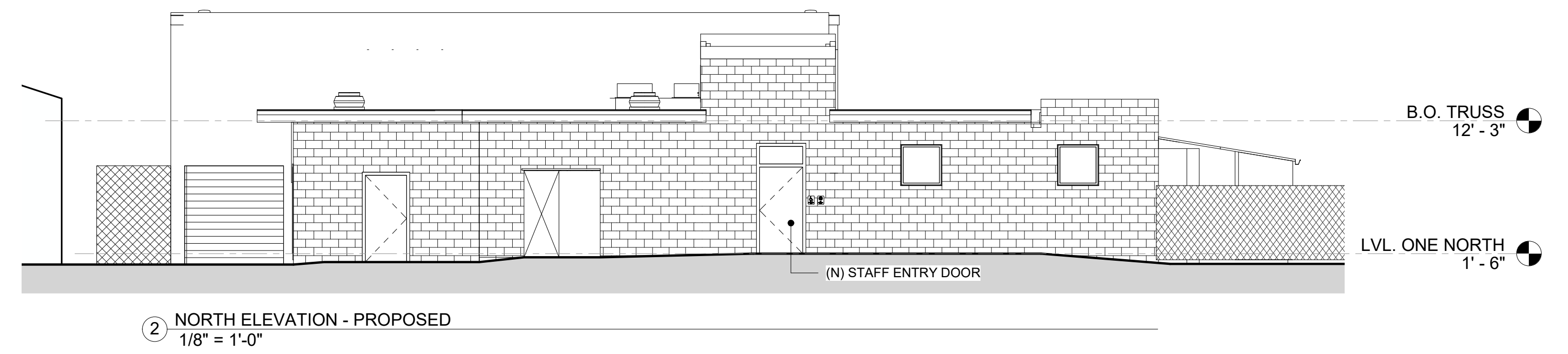
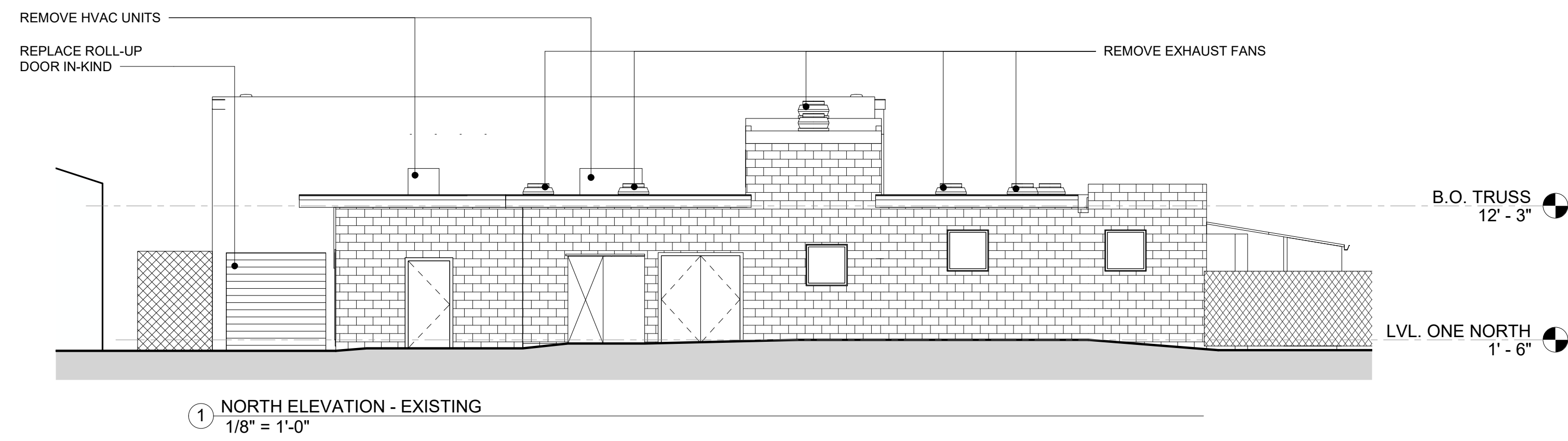
1 ROOF PLAN - EXISTING
1" = 10'-0"



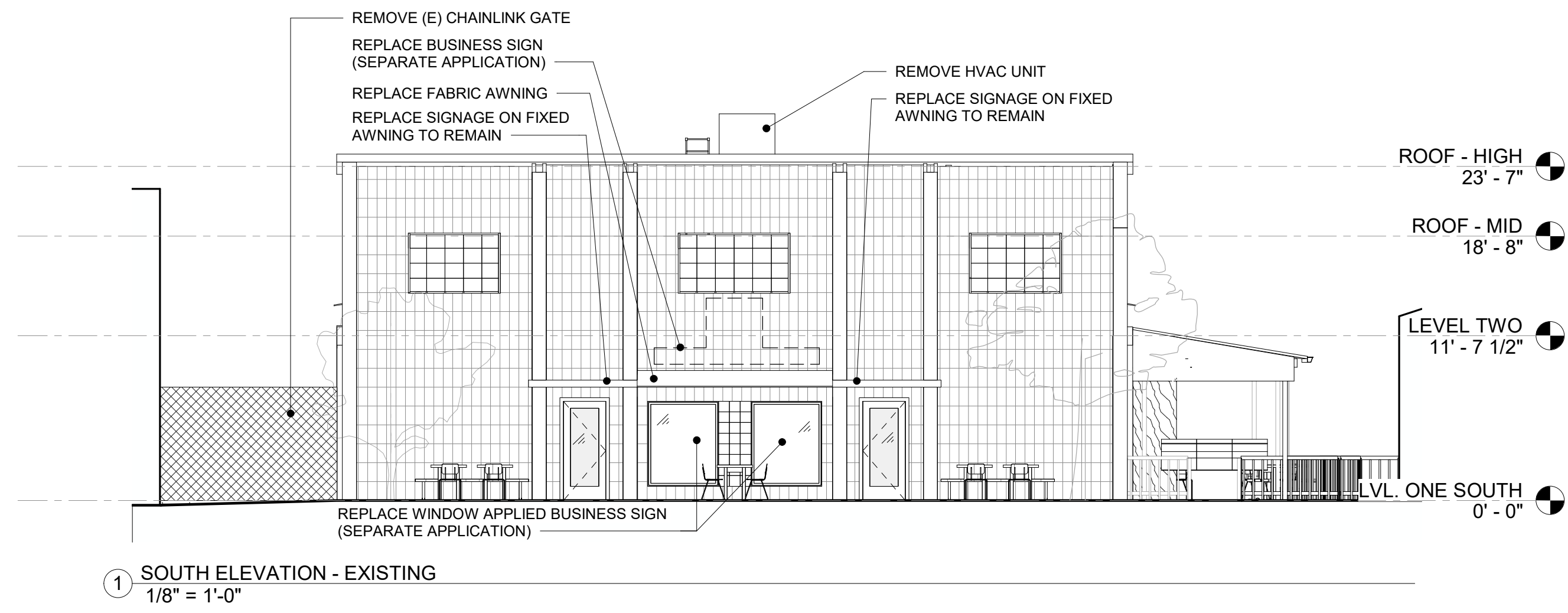
2 ROOF PLAN - PROPOSED
1" = 10'-0"



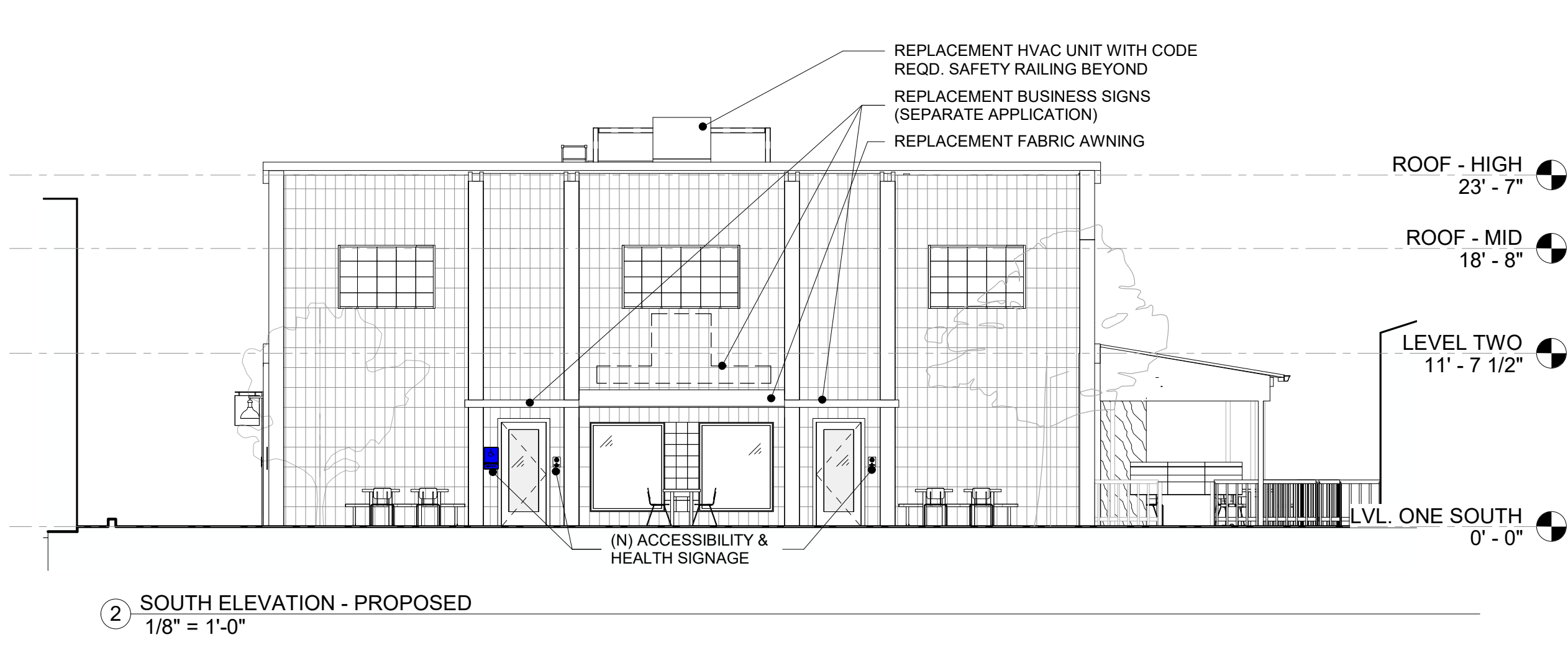
ROOF PLANS - EXISTING & PROPOSED



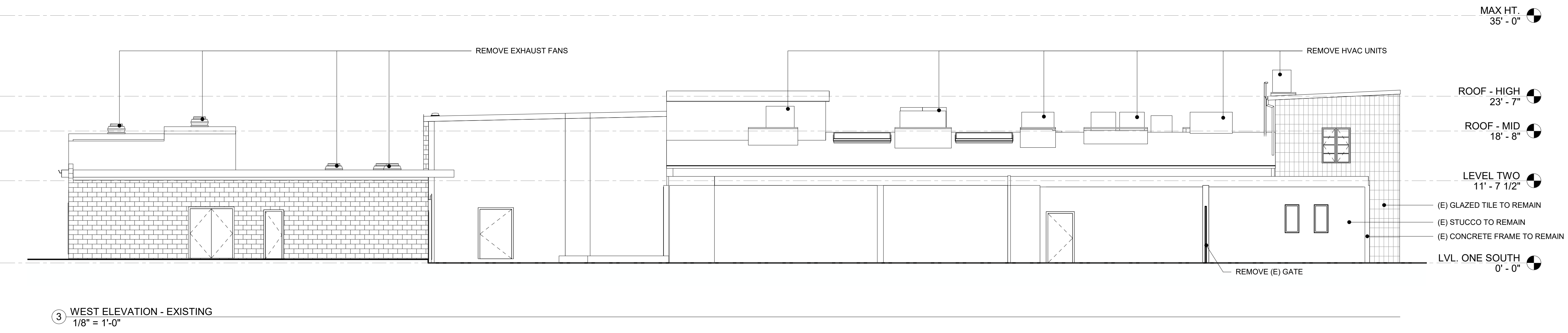
EXTERIOR ELEVATIONS - EXISTING & PROPOSED



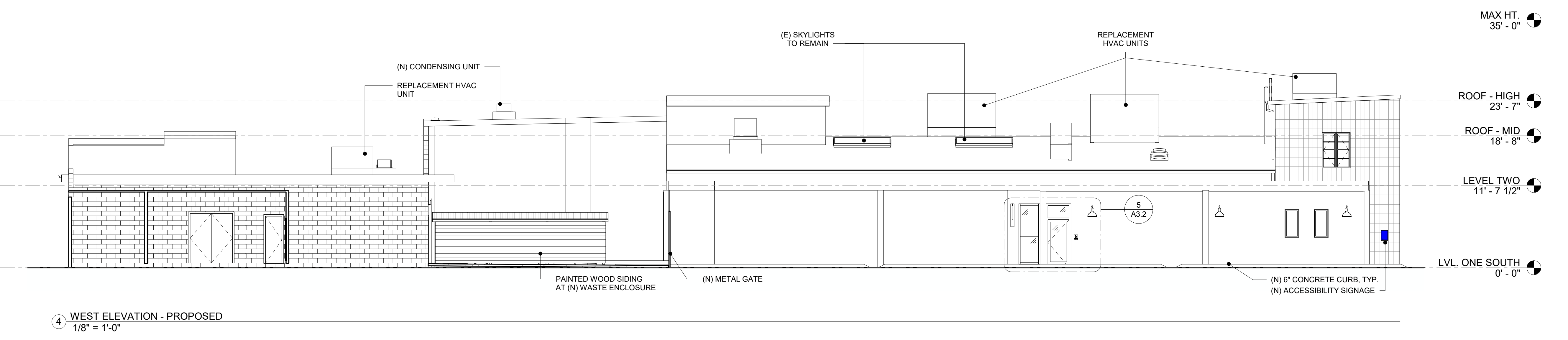
1 SOUTH ELEVATION - EXISTING
1/8" = 1'-0"



2 SOUTH ELEVATION - PROPOSED
1/8" = 1'-0"



3 WEST ELEVATION - EXISTING
1/8" = 1'-0"



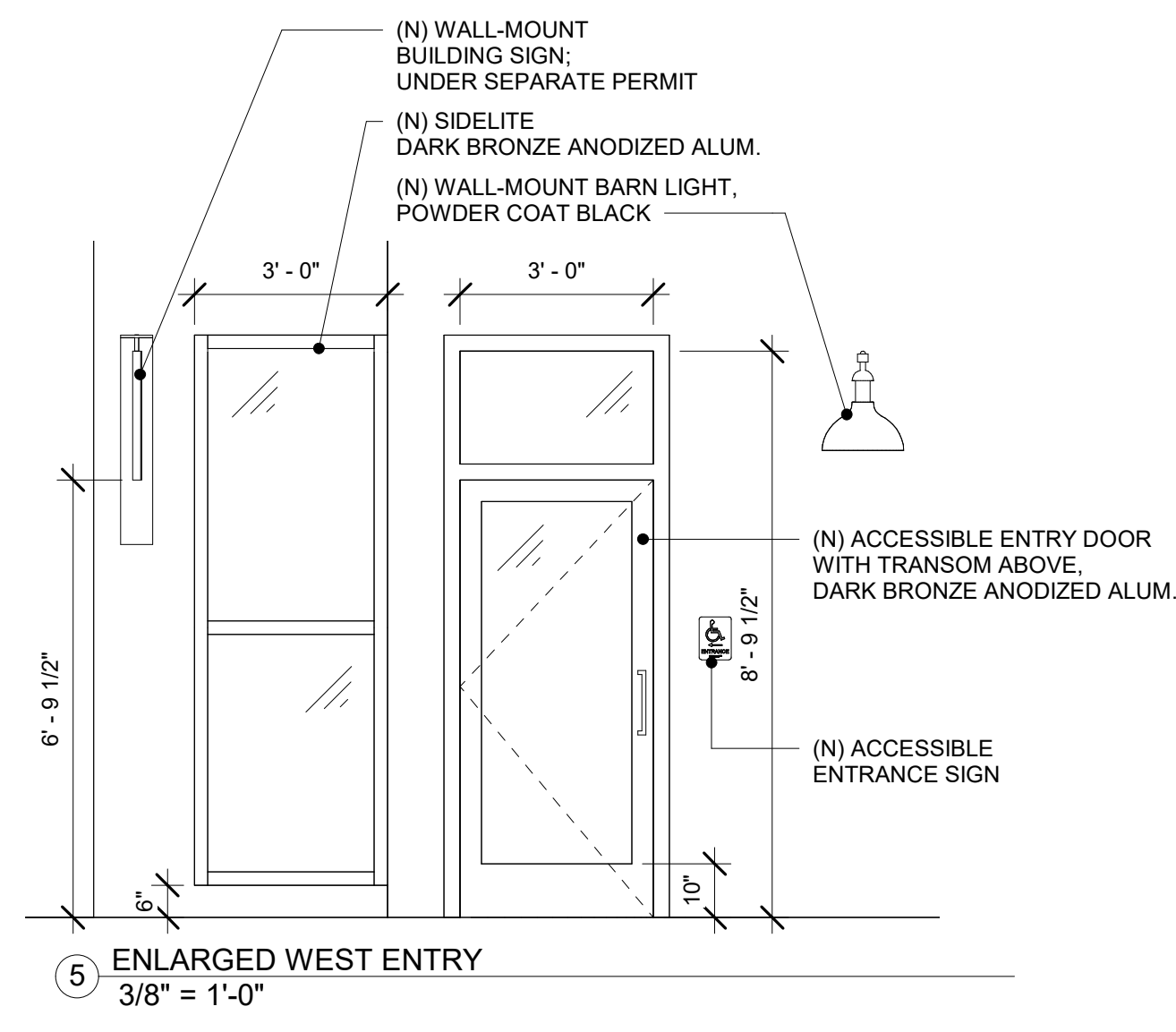
4 WEST ELEVATION - PROPOSED
1/8" = 1'-0"



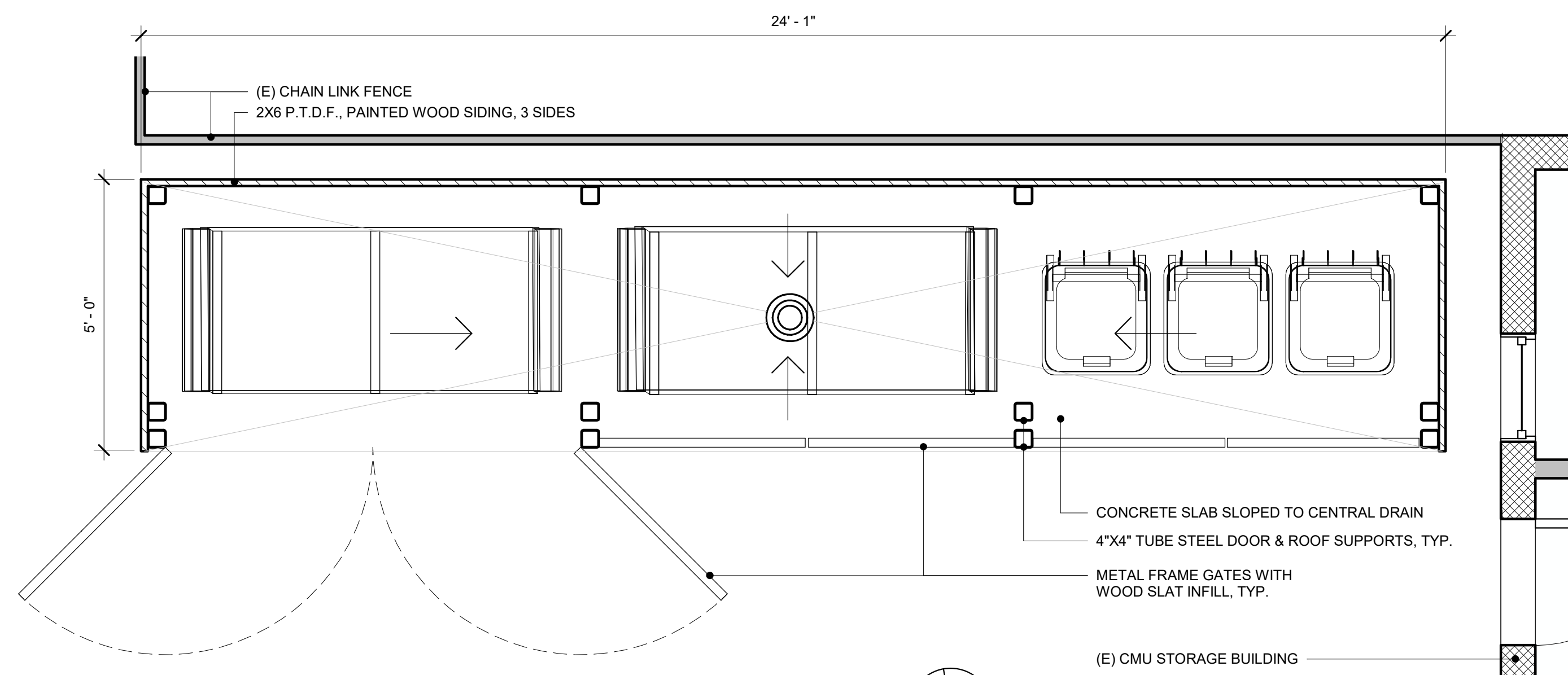
*IMAGE FOR FINISH REFERENCE ONLY.
FINISH: POWDER COAT BLACK
SEE CUT SHEET FOR EXACT PROFILE



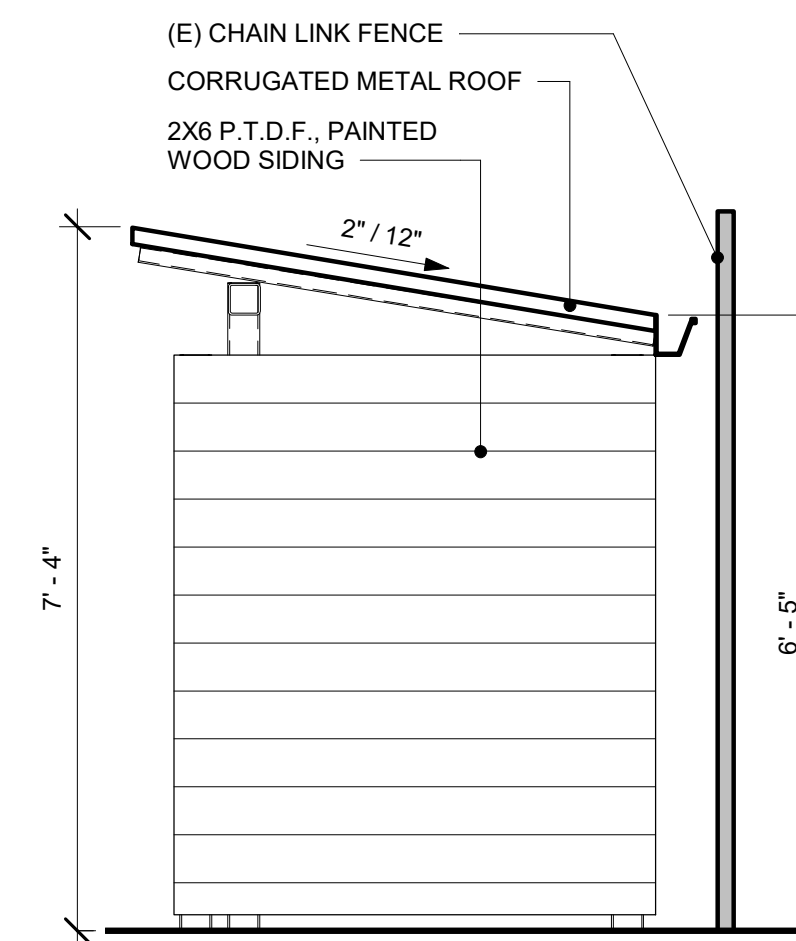
*IMAGE FOR GENERAL DESIGN INTENT REFERENCE ONLY.
SEE ELEVATION BELOW FOR VISION PANEL CONFIGURATION AND HARDWARE



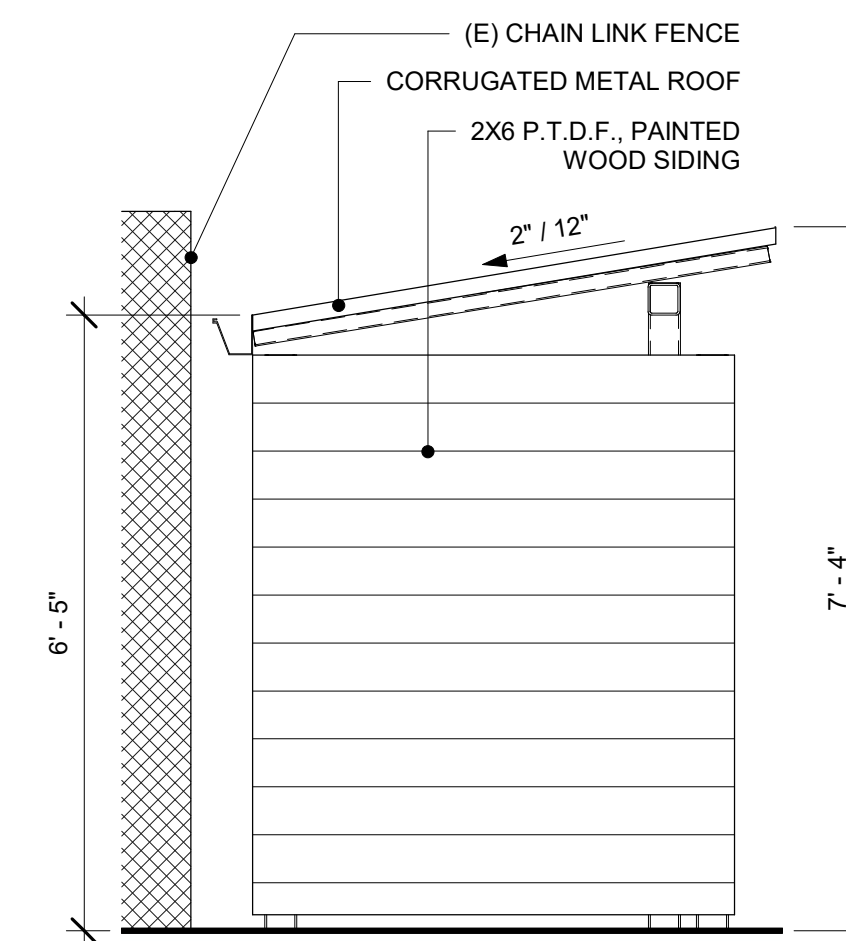
5 ENLARGED WEST ENTRY
3/8" = 1'-0"



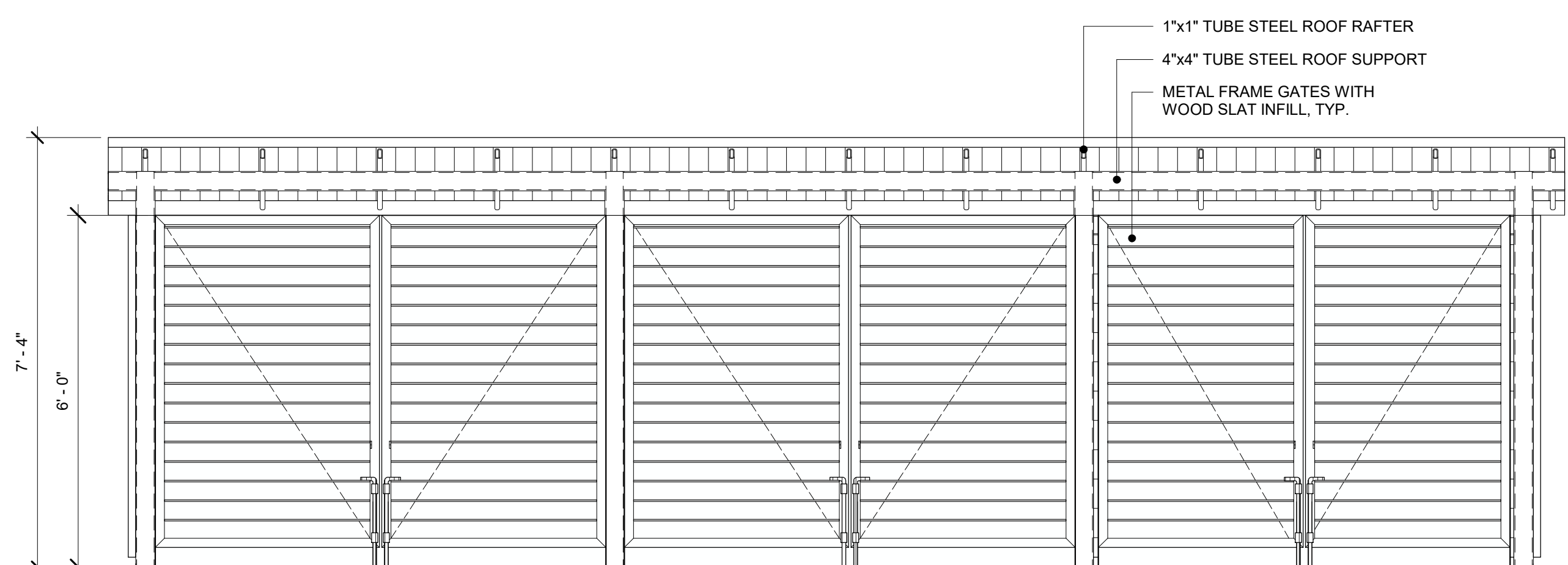
1 ENLARGED WASTE ENCLOSURE PLAN
1/2" = 1'-0"



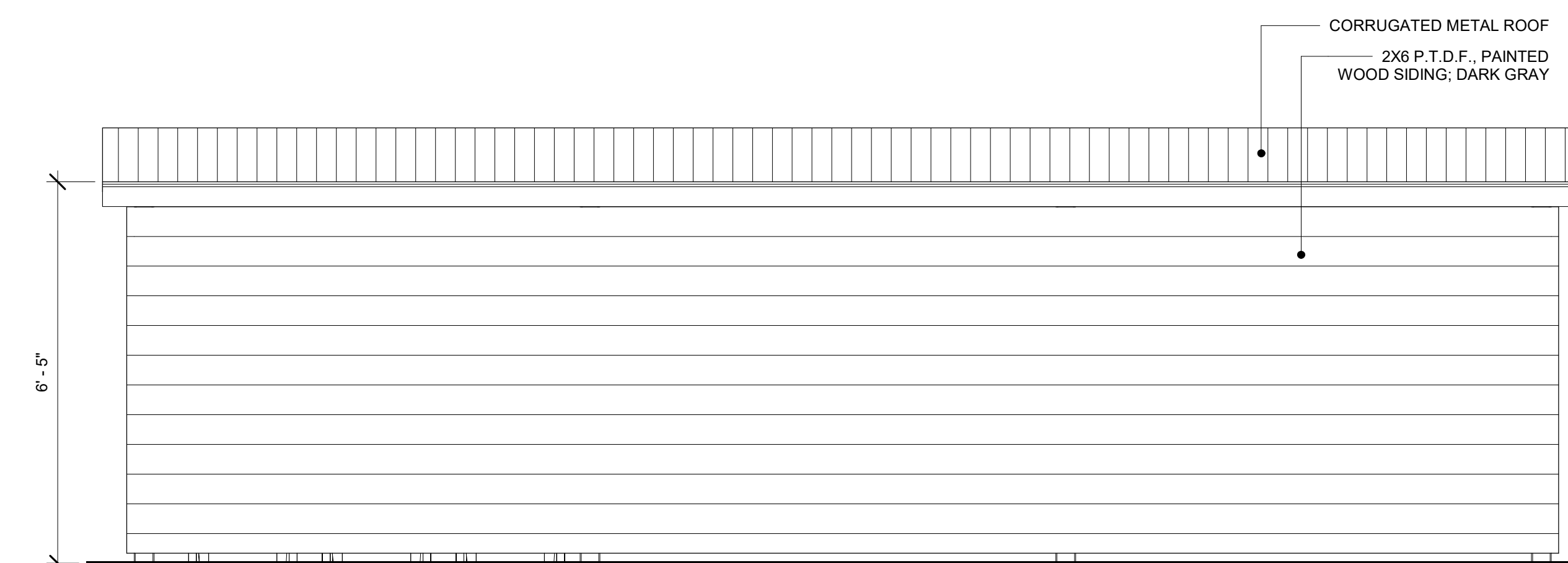
2 WASTE ENCLOSURE ELEVATION - NORTH
1/2" = 1'-0"



4 WASTE ENCLOSURE ELEVATION - SOUTH
1/2" = 1'-0"



3 WASTE ENCLOSURE ELEVATION - EAST
1/2" = 1'-0"



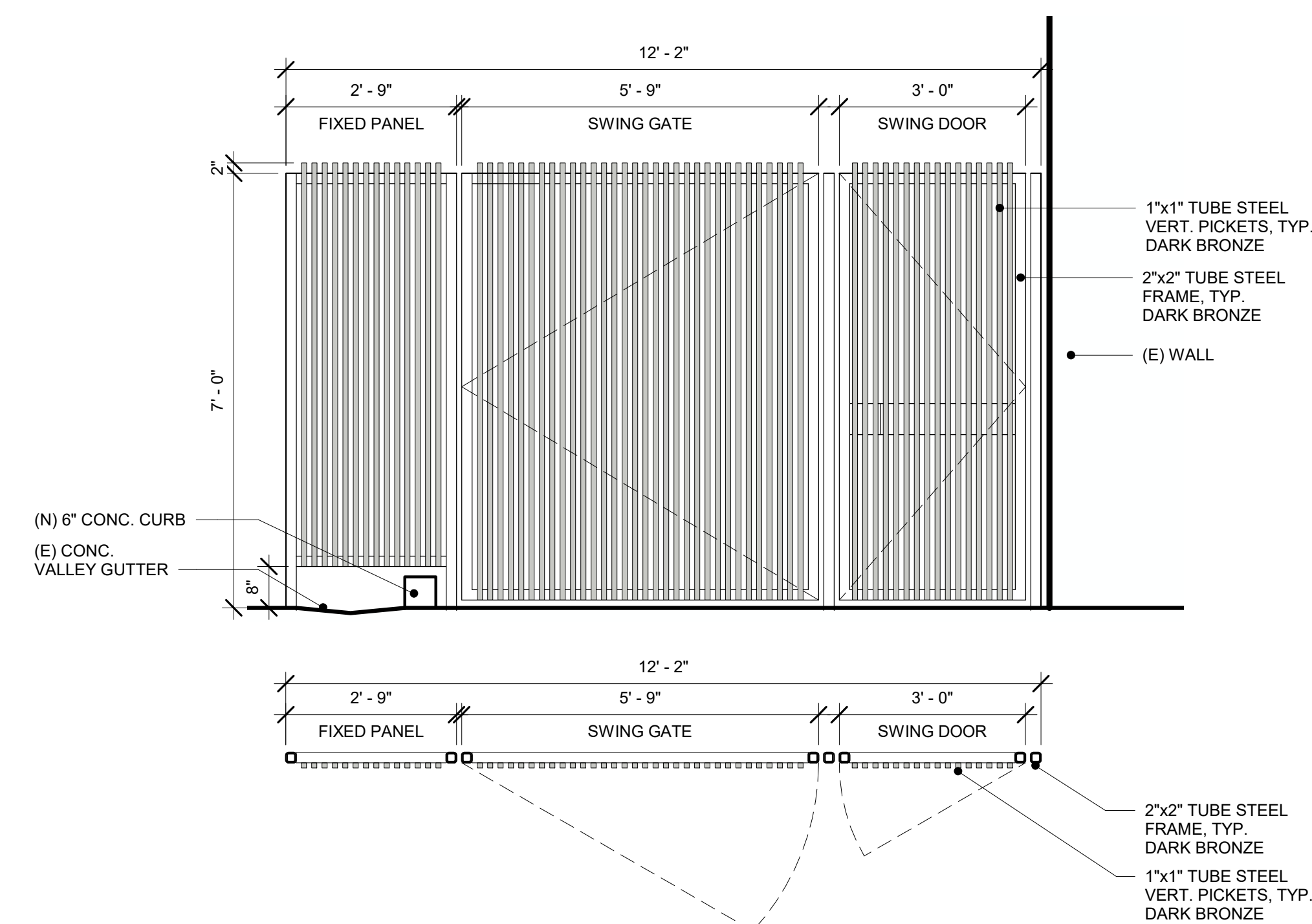
5 WASTE ENCLOSURE ELEVATION - WEST
1/2" = 1'-0"



WASTE ENCLOSURE "DARK GRAY"
KELLY MOORE VOLCANIC ROCK KM5826

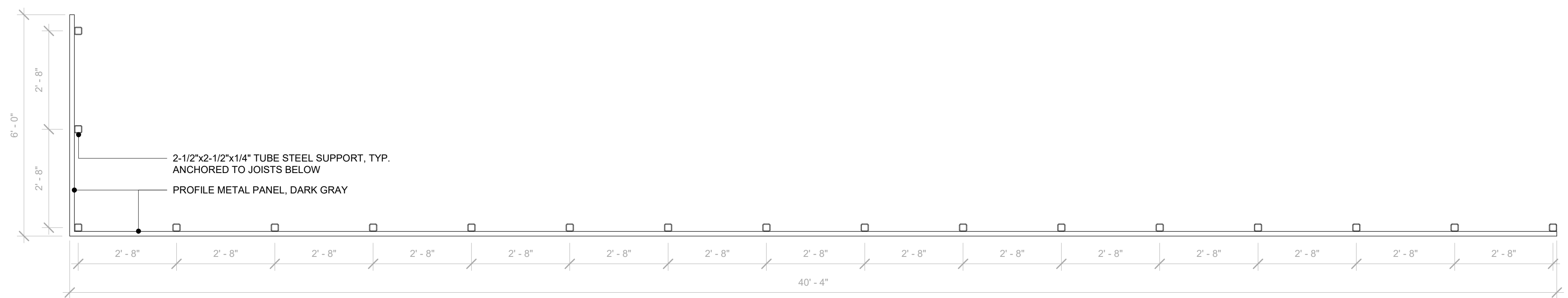
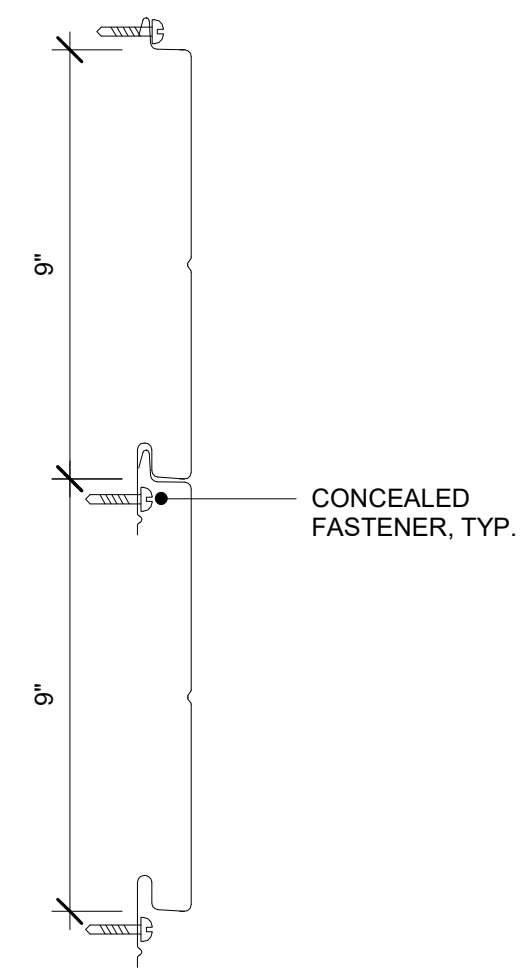
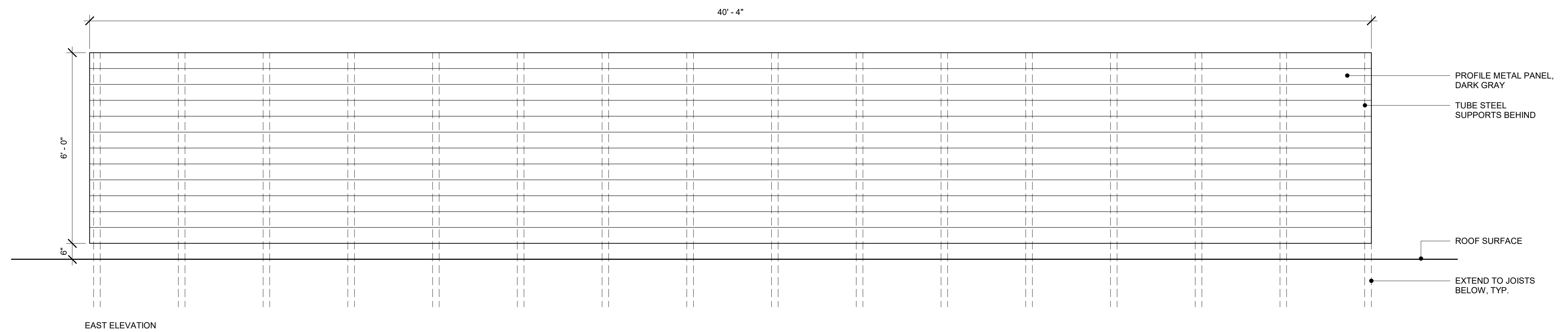
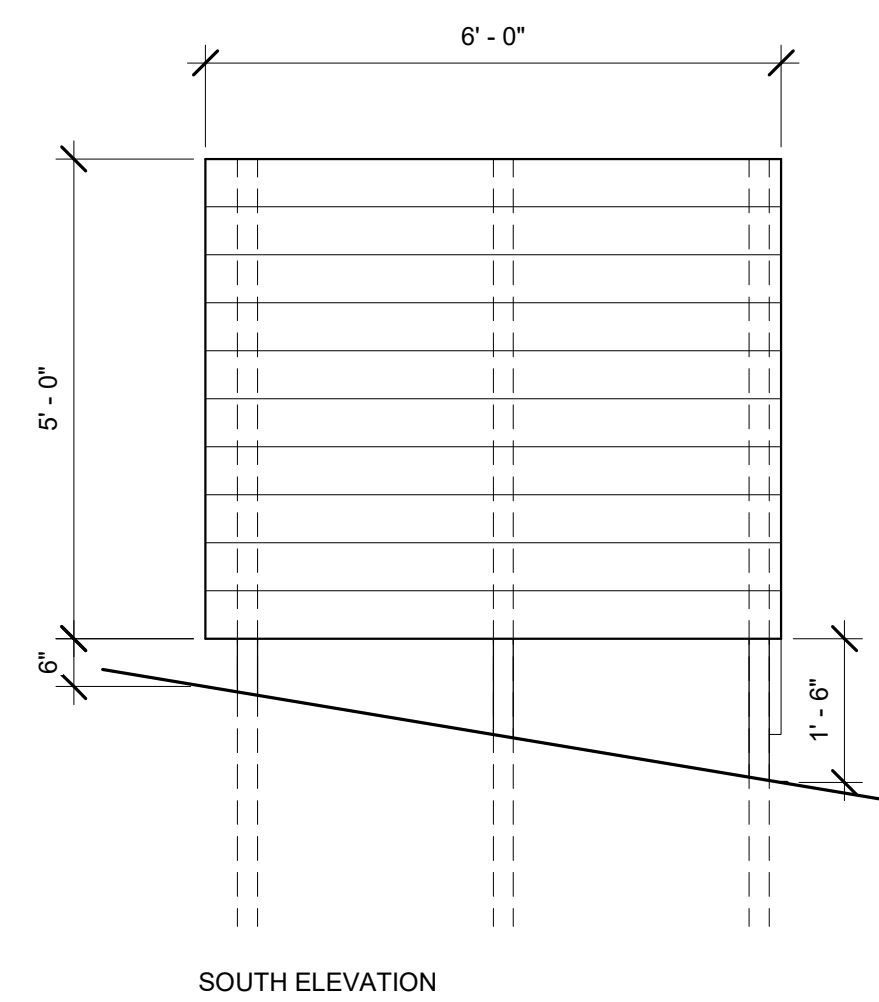


GATE "DARK BRONZE"
BRONZE KYNAR (AAMA 2605)



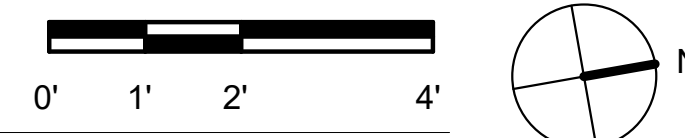
6 DV- PROPOSED METAL GATE - PLAN & ELEVATION
1/2" = 1'-0"

SITE STRUCTURES - PROPOSED



BASIS OF DESIGN:
CENTRIA IW-14A GALVANIZED PANEL 22GA
COLOR: 9914 MIDNIGHT BRONZE

① EQUIPMENT SCREEN PLAN & ELEVATIONS
1/2" = 1'-0"



ROOFTOP EQUIPMENT SCREEN