

Chase Street Bridge at Nathanson Creek

Bridge Replacement



www.quincyeng.com



developing YOUR vision | delivering YOUR project

Agenda

- Welcome
- Introduction
- Status
- Process
- Roadway Design
- Bridge Design
- Schedule
- Breakout Session



Welcome

- Share Information and Solicit Public Input
- Project Team- Self Introductions
- History
 - Constructed in 1910
 - Widened in 1990
 - Not Considered a Historic Structure
 - Structurally Deficient and Functionally Obsolete
 - End of its Service Life
- Federal Highway Bridge Program
 - 88.53% Federal Dollars
 - 11.47% City General Fund



Location



Purpose and Need

Replace Deficient Bridge

- Replace Old Structure
- Minimize Impact to Adjacent Facilities
- Improve Hydraulics
- Reduce Maintenance

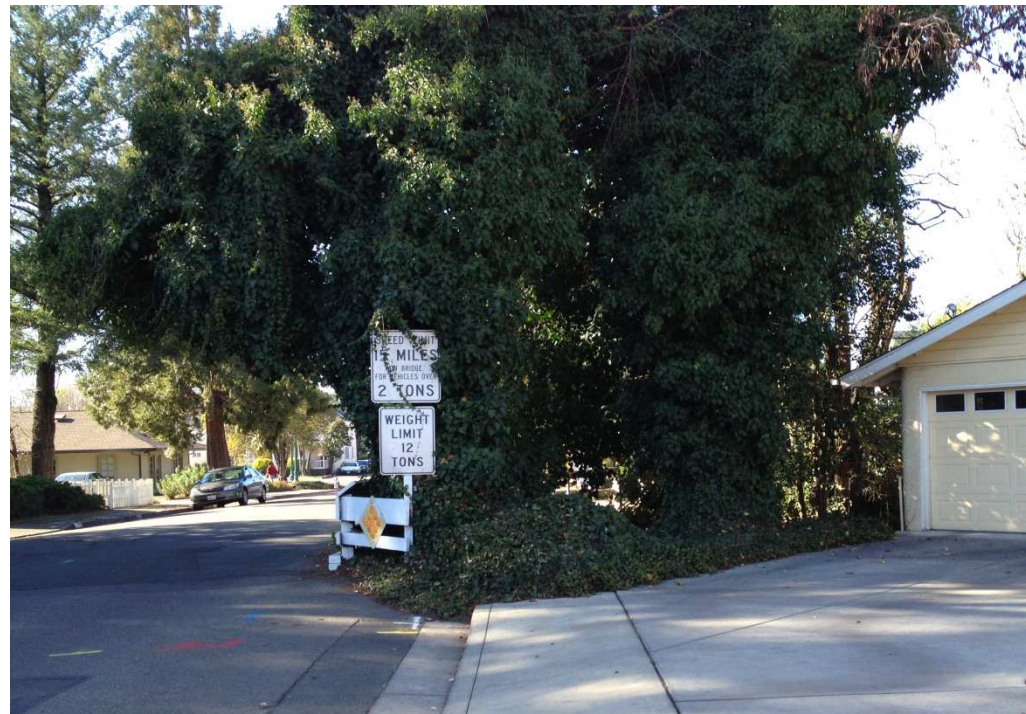
Improve Public Safety

- Increase Roadway & Shoulder Width
- Match Adjacent Roadway
- Provide ADA Compliant Access
- Address Cut-Thru Hot Spot



Considerations

- Traffic Calming Measures
- Hydraulic Capacity
- Aesthetics
- Minimizing Construction Impacts
- Minimizing Permanent Environmental Impacts
- Trees
- Pedestrians and Bicyclists
- Utilities



Environmental Compliance (NEPA CE, CEQA MND)

Studies Required:

1. Traffic
2. Noise
3. Air Quality
4. Water Quality
5. Hazardous Waste
6. Floodplain Impacts
7. Biology (Natural Environment Study and Biological Assessment)
8. Wetlands Assessment and Delineation
9. Land Use and Community Impacts
10. Cultural/Historical (APE Map, HPSR, ASR, HRER)
11. Equipment Staging
12. Permits needed: 404, 401 , 1602

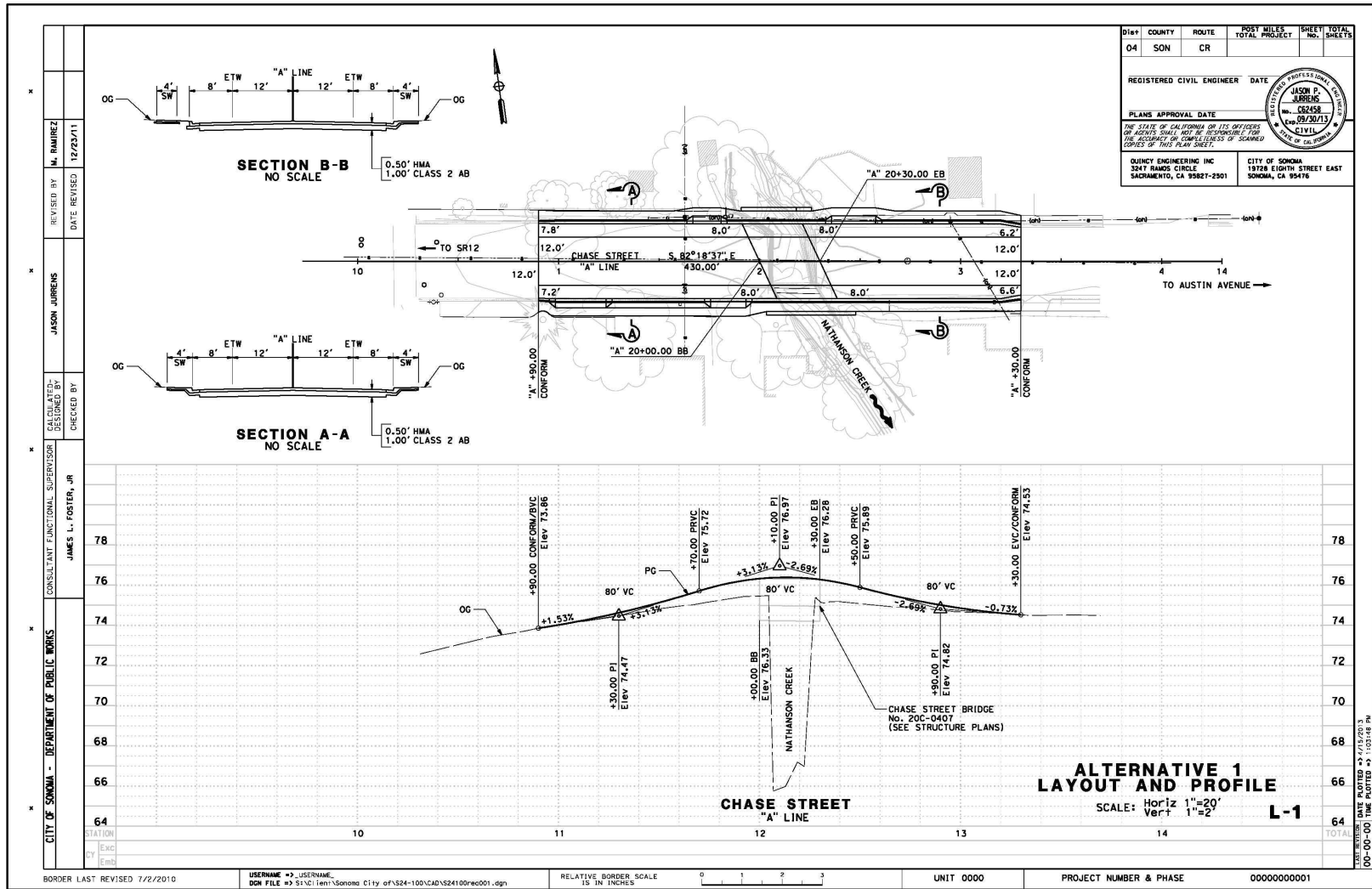
Roadway Alternatives



Roadway Alternatives



Roadway Alternatives



DIST	COUNTY	ROUTE	POST MILES TOTAL PROJECT	SHEET No.	TOTAL SHEETS
04	SON	CR			

REGISTERED CIVIL ENGINEER DATE

PLANS APPROVAL DATE

THE STATE OF CALIFORNIA ON ITS OFFICERS OR AGENTS SHALL NOT BE RESPONSIBLE FOR THE ACCURACY OR COMPLETENESS OF SCALED COPIES OF THIS PLAN SHEET.

QUINCY ENGINEERING INC
3247 RAMOS CIRCLE
SACRAMENTO, CA 95827-2501

CITY OF SONOMA
1878 EIGHTH STREET EAST
SONOMA, CA 95476

REGISTERED PROFESSIONAL ENGINEER
JASON P. JARRINS
No. C62458
Exp. 09/30/13
CIVIL
STATE OF CALIFORNIA

REVISOR: M. RAMIREZ 12/23/11

DESIGNER: JASON JARRINS

CHECKED BY: JAMES L. FOSTER, JR

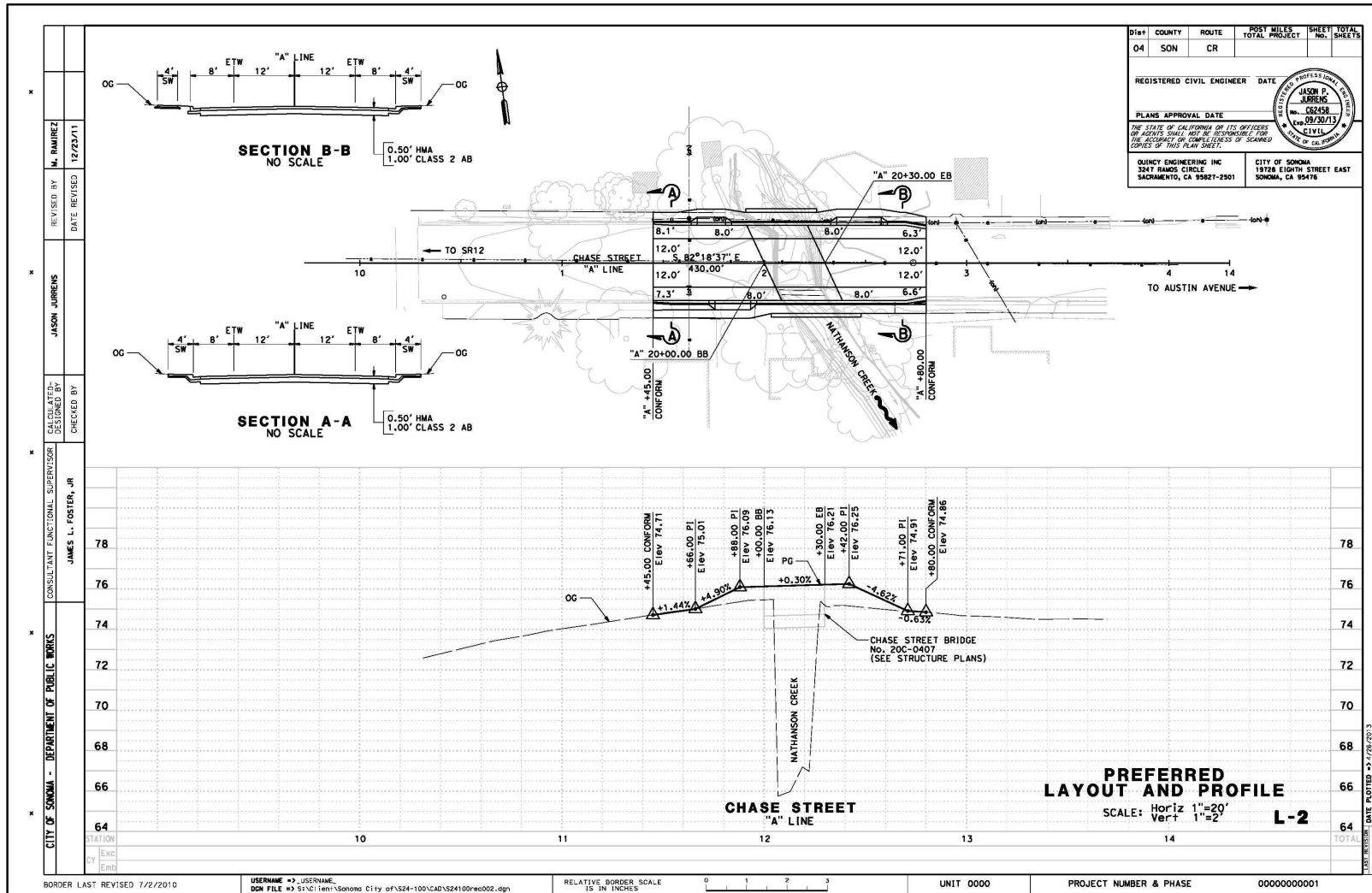
CITY OF SONOMA - DEPARTMENT OF PUBLIC WORKS

CONSULTANT FUNCTIONAL SUPERVISOR

CALCULATED-DESIGNED BY



Roadway Alternatives (Preferred Alternative)



DIST	COUNTY	ROUTE	POST MILES TOTAL PROJECT	SHEET No.	TOTAL SHEETS
04	SON	CR			

REGISTERED CIVIL ENGINEER DATE

PLANS APPROVAL DATE

THE STATE OF CALIFORNIA ON ITS OFFICERS OR AGENTS SHALL NOT BE RESPONSIBLE FOR THE ACCURACY OR COMPLETENESS OF SCALED COPIES OF THIS PLAN SHEET.

QUINCY ENGINEERING INC
3247 RAMOS CIRCLE
SACRAMENTO, CA 95827-2501

CITY OF SONOMA
1878 EIGHTH STREET EAST
SONOMA, CA 95476

JASON P. JARRIS
No. C62458
Exp. 09/30/13
CIVIL
DATE OF CALIFORNIA

DESIGNED BY	MA. RAMIREZ	12/23/11
REVISOR	JASON JARRIS	
CHECKED BY	JAMES L. FOSTER, JR.	
CALCULATED-DRAWN BY		
CONSULTANT FUNCTIONAL SUPERVISOR		
CITY OF SONOMA - DEPARTMENT OF PUBLIC WORKS		

BORDER LAST REVISED 7/2/2010

USERNAME => JSENAME
DGN FILE => S:\C\1ent\Sonoma City of\VS24-100\CAD\VS24100\rec002.dgn

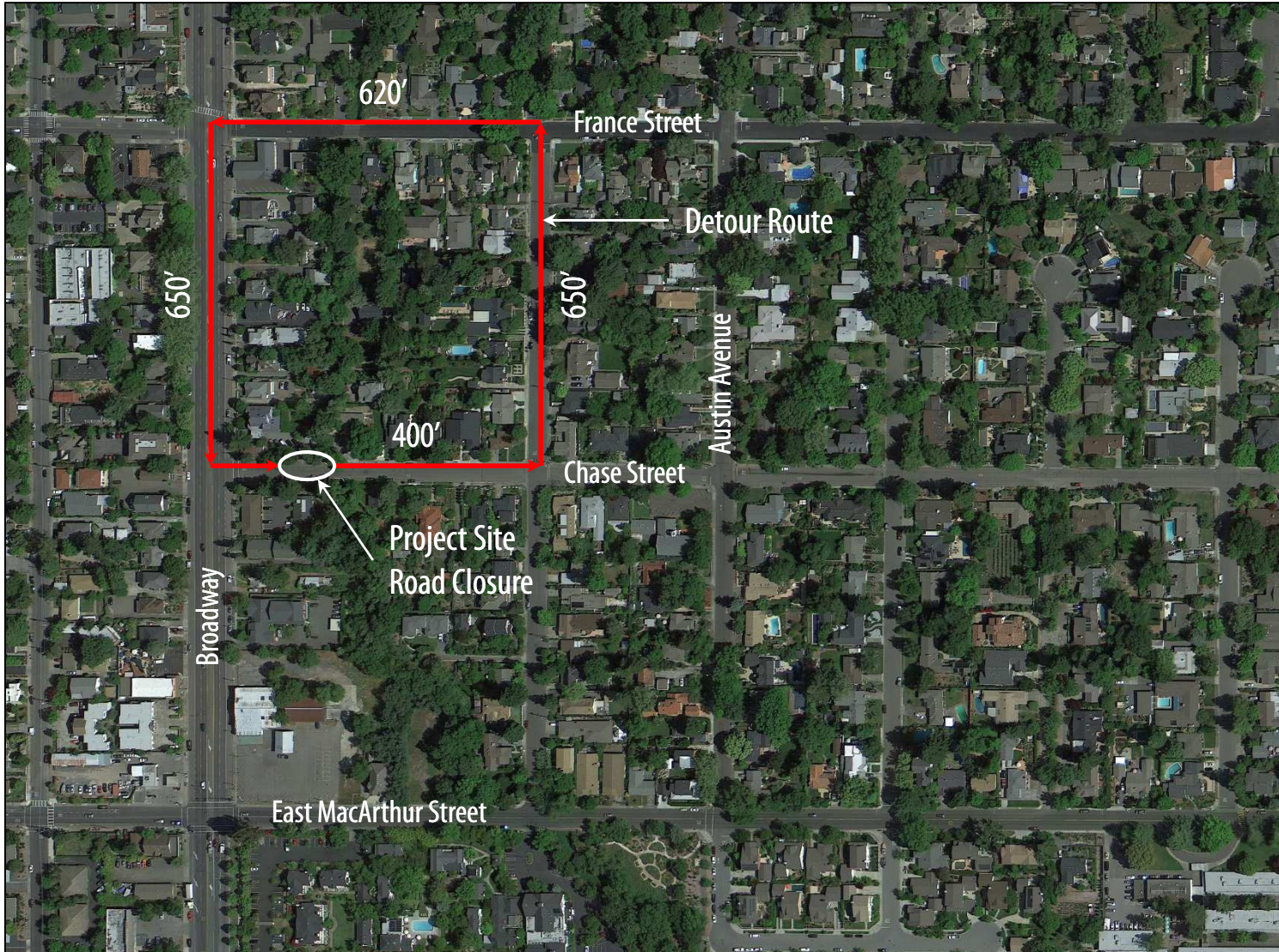
RELATIVE BORDER SCALE IS IN INCHES

UNIT 0000

PROJECT NUMBER & PHASE 0000000001



Proposed Detour



Utilities

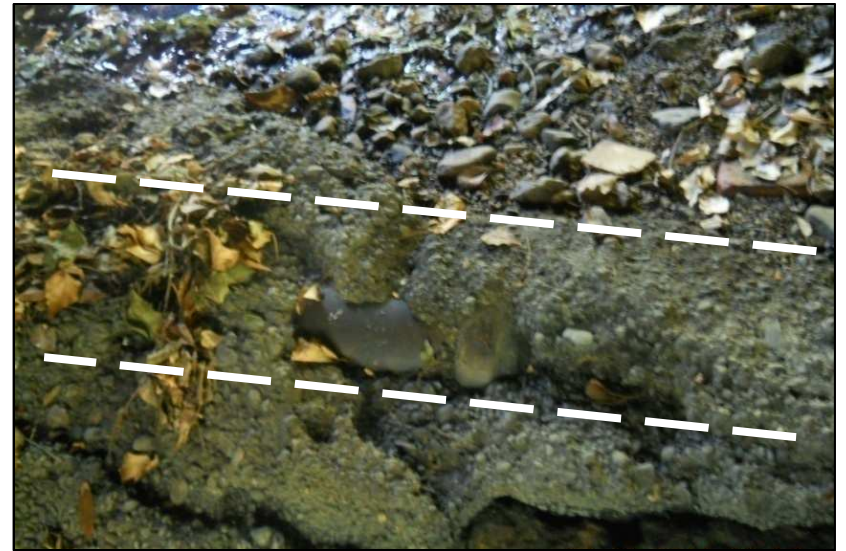
PG&E

Comcast

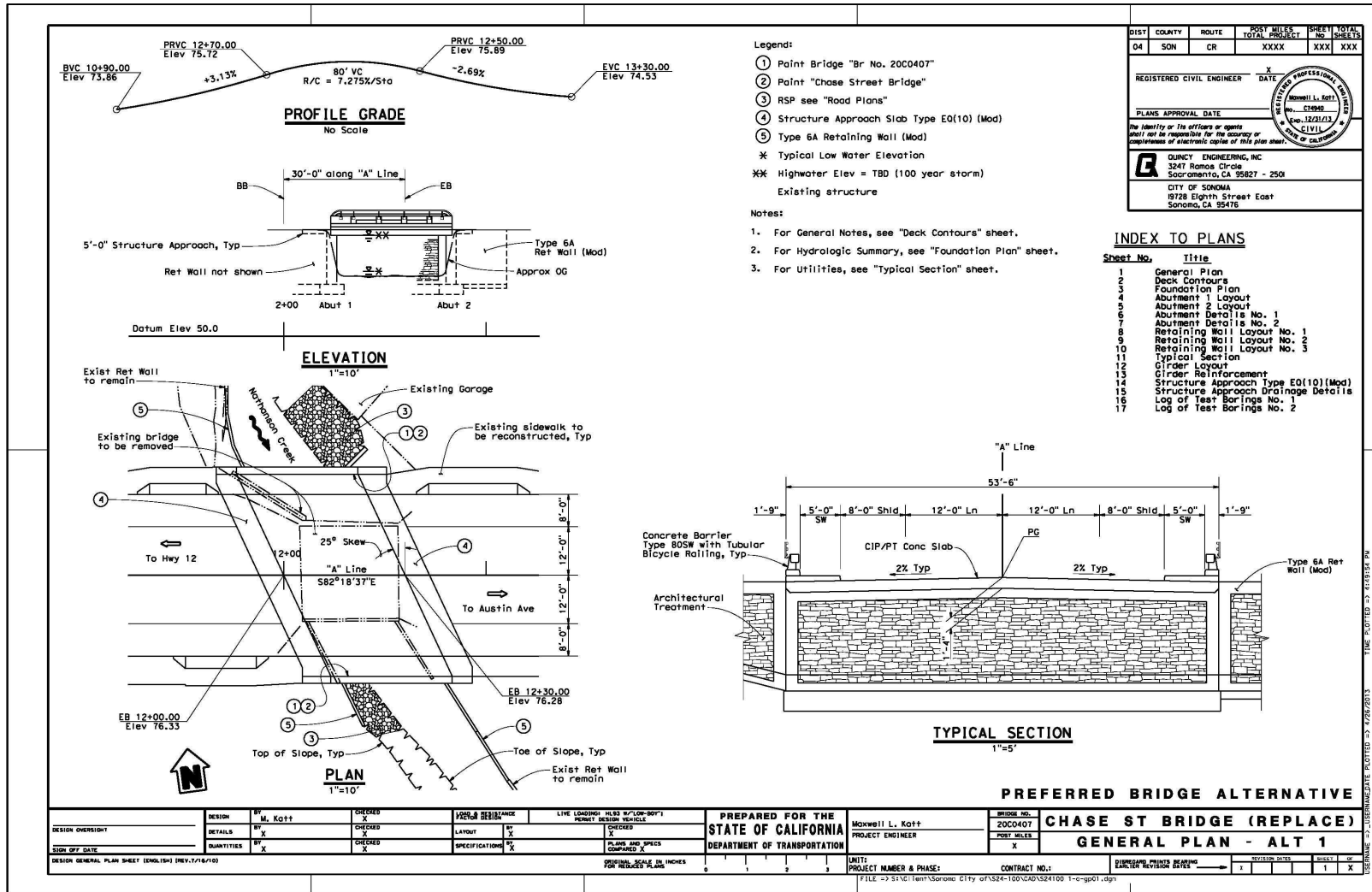
AT&T

City of Sonoma Water Department

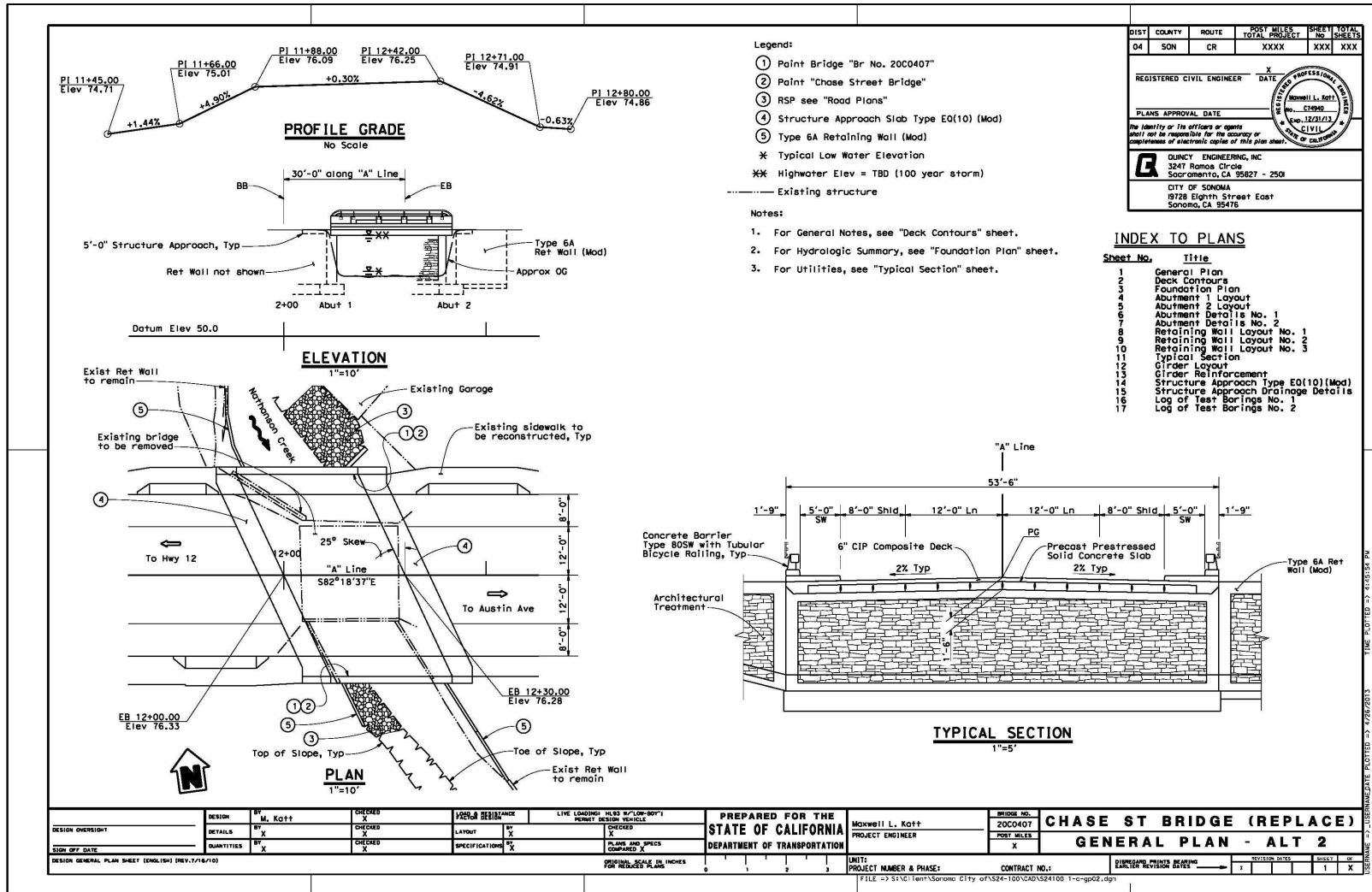
Sonoma County Valley Sanitation District



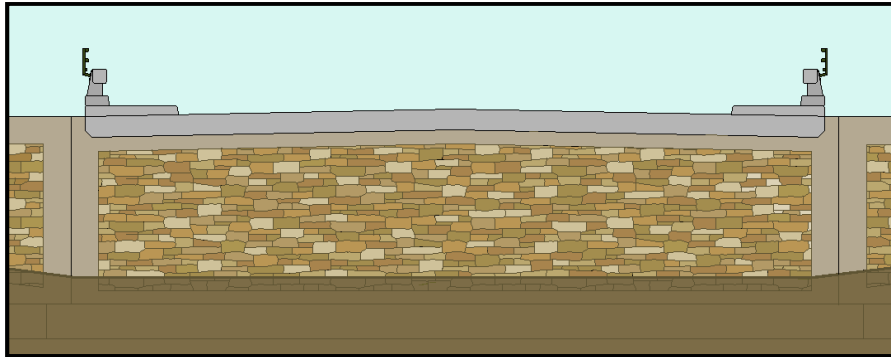
Bridge Alternatives



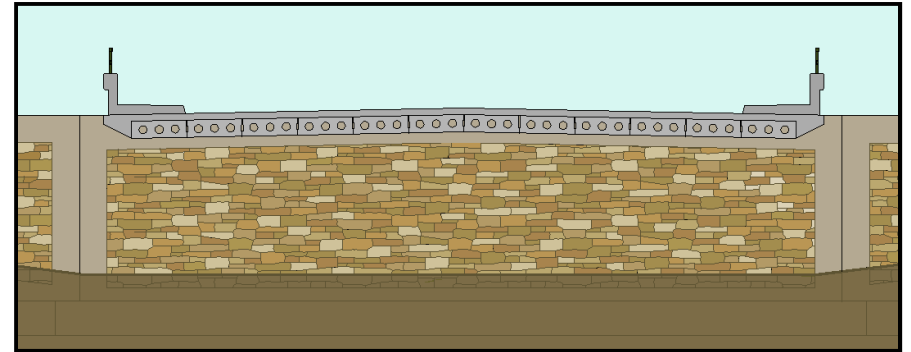
Bridge Alternatives



Bridge Type & Aesthetics



Bridge Type Alternative No. 1 (Preferred Alternative)
Cast in Place Post-Tensioned Concrete Slab
Shown with Architectural Treatment



Bridge Type Alternative No. 2
Precast Pre-Tensioned Concrete Slab
Shown with Architectural Treatment



Architectural Treatment - concrete form liners



Architectural Treatment – staining concrete

Aesthetic Options



Texture on Walls



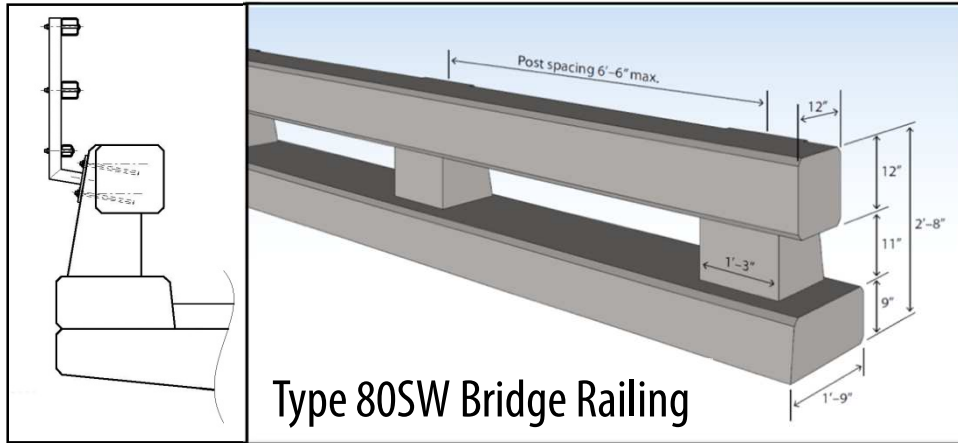
Texture on Bridge



Stain Colors



Aesthetics Option for Bridge Railing



Stained Concrete Bridge Railing



Concrete Bridge Railing w Stained Texture

Proposed Schedule

Task	Duration Range																							
	2013												2014											
	Jan	Feb	Mar	Apr	May	Jun	Jul	Aug	Sep	Oct	Nov	Dec	Jan	Feb	Mar	Apr	May	Jun	Jul	Aug	Sep	Oct	Nov	Dec
Management	[Gantt bar spanning all months from Jan 2013 to Dec 2014]																							
Environmental Investigations, Clearance & Permitting	[Gantt bar spanning from Jan 2013 to Dec 2013]																							
Preliminary Engineering	[Gantt bar spanning from Jan 2013 to Sep 2013]																							
Right-of-Way & Utilities	[Gantt bar spanning from Oct 2013 to Feb 2014]																							
Plans, Specifications & Estimate	[Gantt bar spanning from Oct 2013 to Feb 2014]																							
Advertise & Award	[Gantt bar spanning from Mar 2014 to Apr 2014]																							
Construction	[Gantt bar spanning from May 2014 to Sep 2014]																							

Next Steps

- Select Preferred Alternative
- Complete Environmental Studies
- Begin Utility Coordination
- Complete Preliminary Engineering
- Complete Environmental Clearance
- Obtain Regulatory Permits
- Complete Final Plans, Specifications, and Estimate
- Complete Utility Relocations
- Advertise, Administer, and Award Project
- Begin and Complete Construction

Breakout Stations



Existing Aesthetics



Existing Abutment



Existing Abutment



Existing Retaining Wall



Existing Retaining Wall

Block Type Architectural Treatments



Brown Block Stack



Grey Block Stack



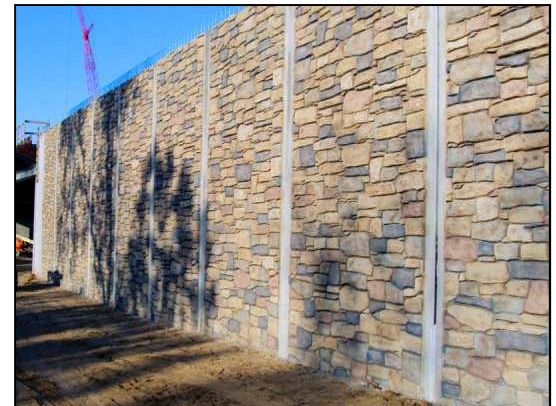
Mixed Color Block Stack



Brown Dry Stack



Grey Dry Stack



Mixed Color Dry Stack

Random Type Architectural Treatments



Brown Cut Stone



Grey Cut Stone



Mixed Color Cut Stone



Brown Fieldstone

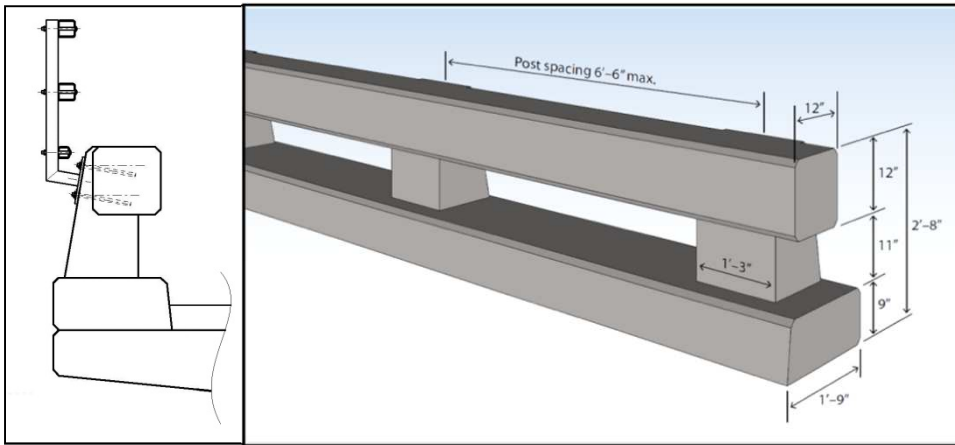


Grey Fieldstone



Mixed Color Fieldstone

Bridge Barrier Aesthetics



Plain Type 80SW Barrier



Barrier with Stain



Barrier with Architectural Treatment and Stain