



CHASE STREET BRIDGE REPLACEMENT PROJECT (AT NATHANSON CREEK)



FACT SHEET

Project

The City of Sonoma is proposing to replace the structurally-deficient Chase Street Bridge at Nathanson Creek.

Location

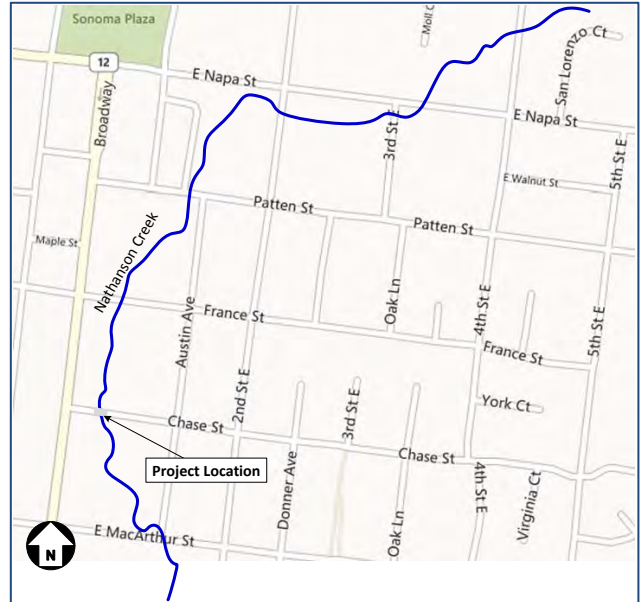
Chase Street between Broadway (SR12) and Austin Avenue in the City of Sonoma

Schedule

Construction is expected in the spring of 2014, with road closure expected summer of 2014.

Reasons for Replacement

- Rubble abutments provide little lateral resistance and are deteriorated.
- Significant deflection of the bridge deck when used, causing asphalt failure.
- Deterioration of the timber stringers.
- Surface rust of steel girders.
- Deterioration of the wooden bridge rails.
- Substandard bridge width with no pedestrian sidewalk.



Features

- Increases width of bridge to match existing roadway on each side.
- Provides improved pedestrian and bicycle safety by adding sidewalk and roadway shoulder on each side of the roadway.
- Includes traffic-calming components.
- Improves barrier rails for better vehicular and pedestrian safety.
- Improves hydraulic capacity of the creek at the bridge by raising the single-span structure and aligning it better with the channel.
- New retaining transition walls will be added to efficiently pass stream flow, prevent scour and help prevent erosion at the stream banks adjacent to the bridge.
- Will include aesthetic treatments to improve the appearance of the bridge.

Cost

The initial estimate of probable project costs is approximately \$1.9 million. Approximately \$1.5 million of the cost is expected to be funded through Caltrans Highway Bridge Replacement and Rehabilitation (HBRR) grants, and the remaining \$400K will be paid from the City's general fund.

Initial Recommended Design Option

Design options for the proposed bridge are shown on the following page. The initial design option recommended by City staff is Option 2. This design option has been recommended for its relative simplicity and to enhance bicycle safety over the bridge. The traffic-calming feature of this design consists of raising the roadway deck approximately eight inches (8"), thereby creating a speed table that will slow vehicular traffic crossing the bridge.

Questions:

Contact Matt Winkelman at (707) 523-1010 for any questions.

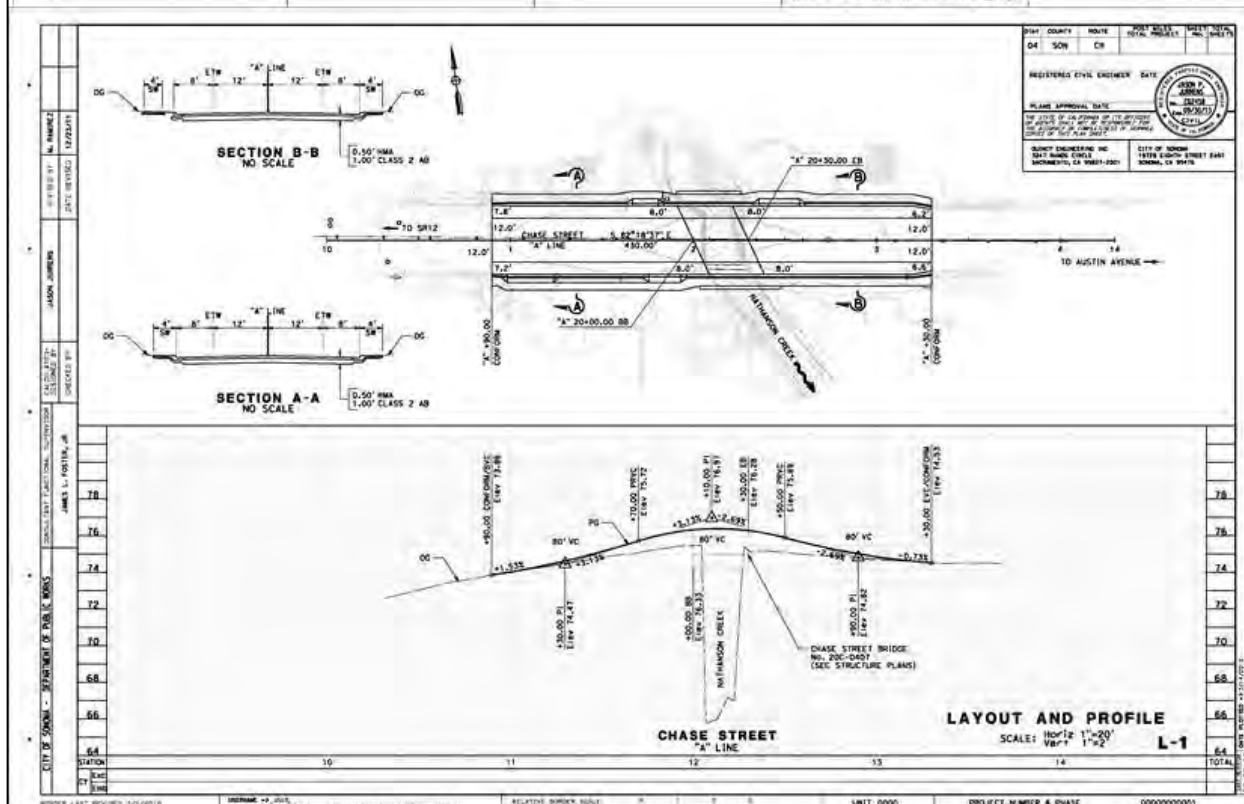
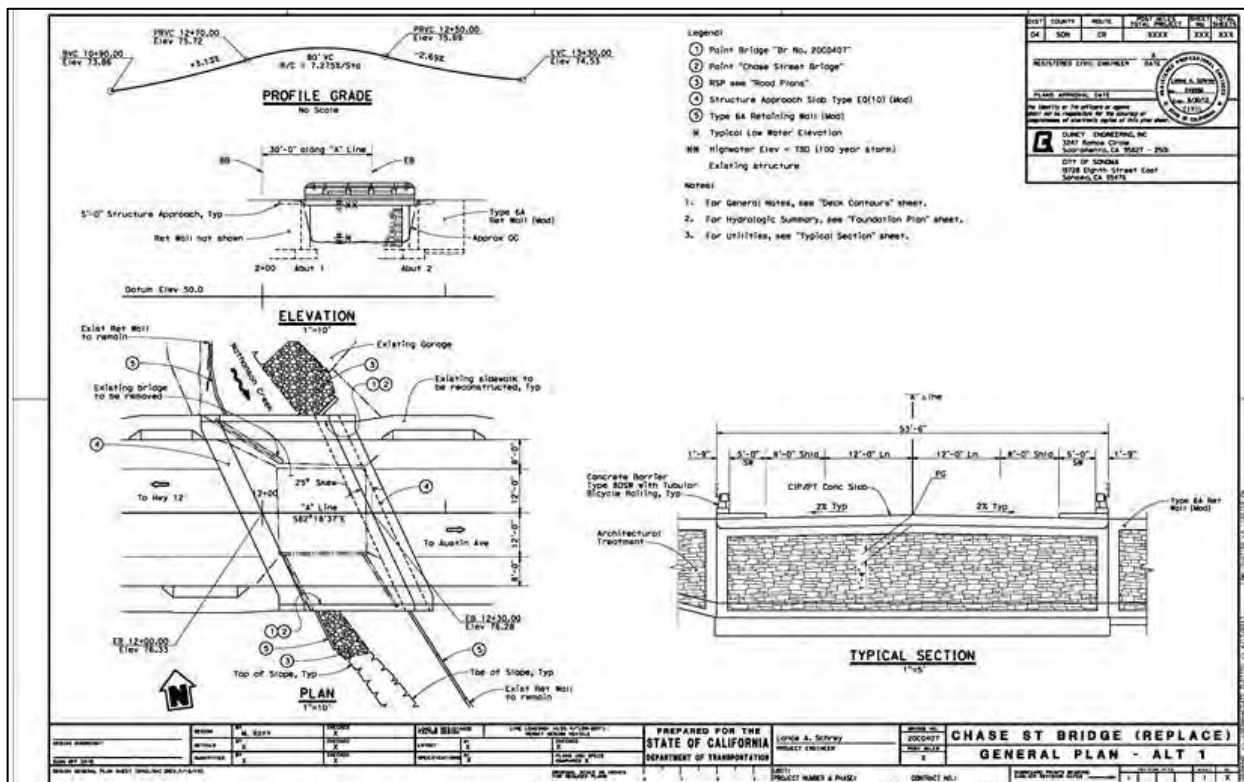


CHASE STREET BRIDGE REPLACEMENT PROJECT (AT NATHANSON CREEK)





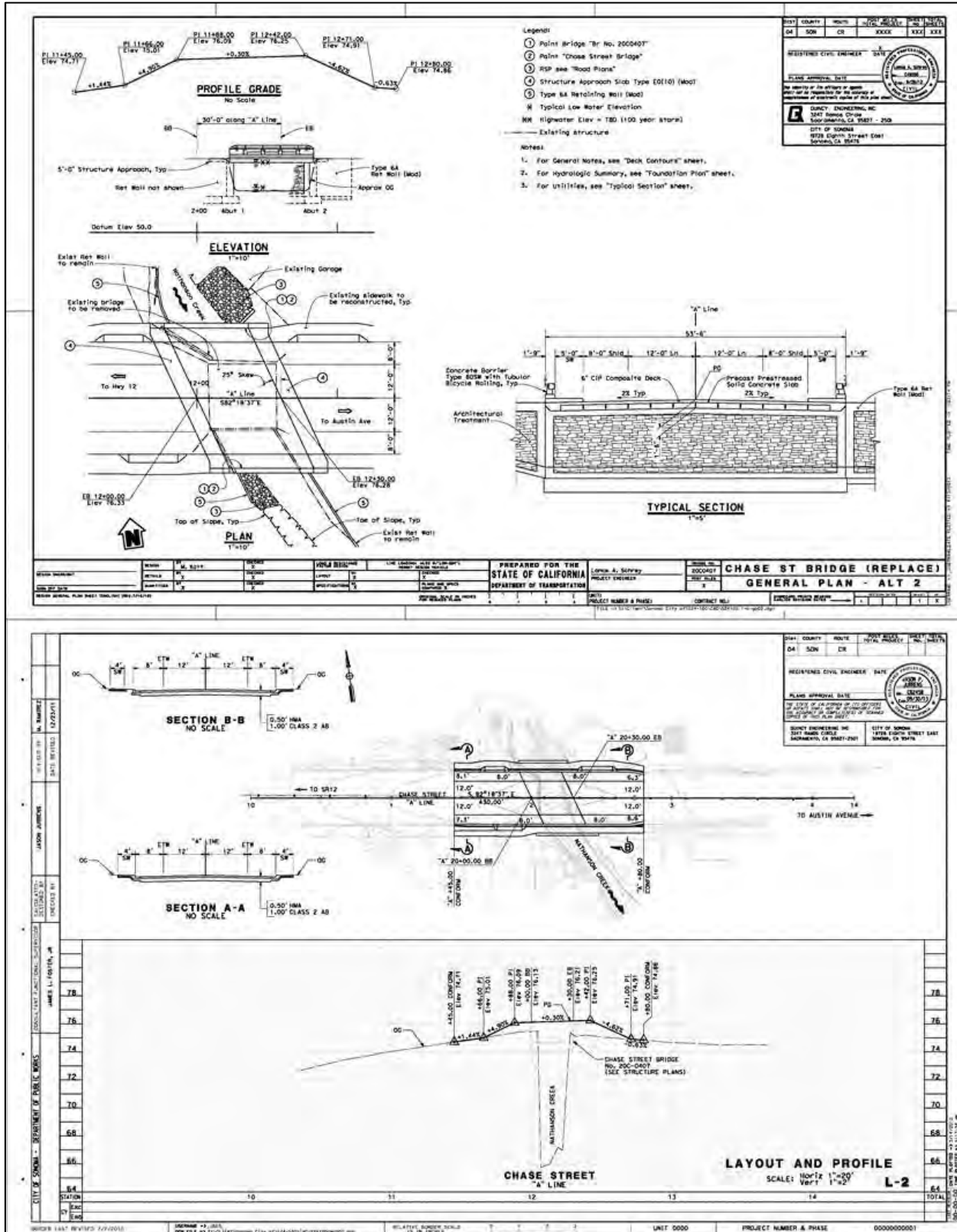
CHASE STREET BRIDGE REPLACEMENT PROJECT (AT NATHANSON CREEK)



Option 1



CHASE STREET BRIDGE REPLACEMENT PROJECT (AT NATHANSON CREEK)



Option 2