

TOWN OF SWANSBORO
Hazard Mitigation Plan
Annex 5
to
Onslow County Hazard Mitigation Plan
Table of Contents

PREFACE (SEE ONSLOW COUNTY MJ OMP) 11

I. INTRODUCTION..... 11

 A. Background (See *Onslow County MJ HMP*) 11

 B. Purpose (See *Onslow County MJ HMP*)..... 11

 C. Scope (See *Onslow County MJ HMP*)..... 11

 D. Authority (See *Onslow County MJ HMP*) 11

 E. Genral..... 11

 F. The Planning Process 12

 1. Planning Process Participants..... 12

 2. The Hazard Identification and Analysis Matrix..... 12

 3. Vulnerability Assessment 13

 4. Capability Assessment 13

 5. Interim Conclusions 13

 6. Values and Goals 13

 7. Mitigation Strategies and Policies 13

 8. Implementation Responsibilities 13

 9. Monitoring, Evaluating, and Reporting Progress 13

 10. Revisions and Updates 13

G. Adoption of the Plan	14
II. COMMUNITY VALUES AND GOALS.....	14
III. MITIGATION STRATEGIES AND POLICIES.....	14
A. Objectives	14
B. Genererl Hazard Mitigation Strategies	15
C. Specific Hazard Mitigation Strategies	17
1. Actions	17
2. Policies.....	19
D. Geographic Planning Area.....	19
IV. IMPLEMENTATION	20
A. Process	20
B. Funding Sources.....	20
V. MONITORING, EVALUATING, AND REPORTING PROGRESS.....	20
A. Monitoring	20
B. Evaluating	20
1. Benchmarks.....	20
2. Responsibility	20
C. Public Involvement	21
D. Reporting.....	21
VI. REVISIONS AND UPDATES.....	21

Appendixes

APPENDIX A: HAZARD IDENTIFICATION (SEE <i>ONslow COUNTY MJ OMP</i>)	22
--	-----------

A. Hurricanes	22
B. Tsunamis	22
C. Flooding	22
D. Nor'easter.....	22
E. Tornado/ Extreme Storms	22
F. Drought/ Heat Wave	22
G. Wildfire	22
H. Winter Storm/ Freezes	23
I. Earthquake	23
J.Landslide.....	23
K. Dam/ Levee Failure.....	23
L. Volcano	23
M. Sinkholes	23
APPENDIX B: VULNERABILITY ASSESSMENT	24
A. Narrative Summary:.....	24
1. Major Physical Features in the Town of Swansboro	24
2. Critical Facilities and Public Buildings	24
APPENDIX C: CAPABILITY ASSESSMENT	27
A. Existing Policies and Programs	27
1. CAMA Land Use Plan	27
2. Unified Development Ordinance	27
3. Building Codes and Inspections.....	27

B. Jurisdictional Capability.....	27
1. Legal	27
2. Fiscal	27
3. Political	27
4. Technical.....	27
5. Institutional	27
C. Analysis of Capability.....	28

Worksheets

Worksheet #1: Community Goals Town of Swansboro	29
Worksheet #2: Geographic Planning Area Policies (All Hazards) Town of Swansboro .	30
Worksheet #3: Geographic Planning Area Policies (Flooding) Town of Swansboro..	32
Worksheet #4: Geographic Planning Area Policies (Flood Hazard Areas) Town of Swansboro.	34
Worksheet #5: Geographic Planning Area Policies (Town Wide).....	36
Worksheet #6: Hazard Identification and Analysis Matrix.....	38
Worksheet #7: Geographic Planning Area (GPA) Vulnerability Assessment.....	40
Worksheet #8: Community Capability Assessment Town of Swansboro	42

Maps

Town of Swansboro ETJ And Town Limits – Map #1	44
Town of Swansboro Flood Zones – Map #2.....	45

Town of Swansboro Land Use – Map #3	46
Town of Swansboro Flood Hazard And Land Use – Map #4.....	47
Town of Swansboro Zoning – Map #5	48
Town of Swansboro Flood Hazard And Zoning – Map #6	49
Town of Swansboro Repetitive Loss Areas – Map #7	50
Town of Swansboro Flood Hazard And Repetitive Loss Areas – Map #8.....	51
Town of Swansboro Flood Hazard And Critical Facilities – Map #9	52

Attachments

Attachment 1: Public Forum	53
Public Notice.....	54
Roster of Meeting Attendees	55
Attachment 2: Town of Swansboro OC MJ-HMP Approval and Adoption.....	56

PREFACE (SEE ONSLOW COUNTY MJ OMP)

I. INTRODUCTION

A. Background (See *Onslow County MJ HMP*)

B. Purpose (See *Onslow County MJ HMP*)

C. Scope (See *Onslow County MJ HMP*)

D. Authority (See *Onslow County MJ HMP*)

E. General

In 2000, Congress adopted its Disaster Mitigation Act (DMA2K), which requires all local governments to develop a hazard mitigation plan that describes actions to mitigate hazards, risks and vulnerabilities that impact the community and establish a strategy to implement those activities. The State of North Carolina responded by passing Senate Bill 300 which requires all local governments to have an approved Hazard Mitigation Plan in order to receive state public assistance funds (effective for state-declared disasters after November 1, 2004). According to the North Carolina Division of Emergency Management (NCDDEM), the minimum requirements for local governments are as follows: enact and enforce building codes, zoning ordinances, and other measures to enhance their legal capability in an effort to protect life and property; make the public aware of hazards that present risks to people and property and measures they can take to reduce their risk and possible losses; and, comply with Federal and other regulations that are designed to reduce disaster costs as well as preserve and protect natural, historical and cultural resources.

The Town of Swansboro originally participated as part of Onslow County's Hazard Mitigation Plan Task Force in the development of the 2004 plan. A public information meeting to discuss the need for hazard mitigation, the process being followed in the development of the Onslow County Plan, and the Town of Swansboro Annex, was conducted on January 12, 2004 in the Swansboro Town Hall Assembly Room. The 2004 plan was then submitted to the Town of Swansboro Board of Commissioners who approved the plan on September 21, 2004. Following this meeting, the entire Onslow County Multi-Jurisdictional Hazard Mitigation Plan was reviewed by the Board of Commissioners and adopted in July of 2004.

In February of 2009, the Town of Swansboro began reviewing the 2004 Onslow County Hazard Mitigation Plan, Swansboro Annex in order to complete any necessary updates and revisions to the document. A public forum to discuss the updates to the Swansboro Annex was held on June 29, 2009. Following this meeting, the entire Onslow County Multi-Jurisdictional Hazard Mitigation Plan was reviewed by the Board of Commissioners and adopted on July 21, 2009.

In April of 2014, the Town of Swansboro began reviewing the 2009 Onslow County Hazard Mitigation Plan, Swansboro Annex, in order to complete any necessary updates and revisions to the document. A public forum to discuss the

updates to the Swansboro Annex was held on June 26, 2014. Following this meeting, the entire Onslow County Multi-Jurisdictional Hazard Mitigation Plan was reviewed by the Board of Commissioners and adopted on .

F. The Planning Process

1. Planning Process Participants

Under the direction of the Swansboro Town Manager, the Swansboro Town Planning Department spearheaded the update process of the Swansboro Annex to the Onslow County Multi-jurisdictional Hazard Mitigation Plan in accordance with 44 CFR 201.6.

The first order of business was to establish a Hazard Mitigation Planning Advisory Committee that included:

Swansboro Planning Director Jennifer Holland
Swansboro Public Safety Chief Bob Ritchie
Swansboro Deputy Police Chief Dwayne Taylor
Swansboro Deputy Fire Chief Art Taylor
Swansboro Public Works Director/Building Inspector Jim Stipe

The Hazard Mitigation Planning Advisory Committee members gathered information and forwarded it to the Planning Department for compilation into the plan. Planning Director Jennifer Holland was tasked with the coordination of data from other committee members as well as gathering the remainder of the historical, statistical, and supplementary data. Swansboro Deputy Fire Chief Art Taylor provided information associated with hazardous materials storage, transportation of hazardous materials, storage, transportation of hazardous materials, statistical data related to wildfires, critical facilities and hazardous storage sites, and other information relative to Fire Department operations. Swansboro Deputy Police Chief Dwayne Taylor the department's Disaster Response Plan and information associated with Police Department operations. Public Works Director/Building Inspector Jim Stipe gathered information related to the location of water and sewer lines, lift stations, water wells and tanks, and other historical information related to the Public Utilities Department, as well as information concerning Repetitive Loss Properties, flooding, and the building code.

2. The Hazard Identification and Analysis Matrix

The Town of Swansboro prepared the Hazard Identification and Analysis Matrix using the Onslow County-prepared matrix format. The Town of Swansboro determined the priority to which each of hazards should be assigned (See *Appendix A – Hazard Identification*).

3. Vulnerability Assessment

The current building numbers and values were provided by Harry Smith with the Onslow County Tax Office and are current as of January 1, 2014. Using 2010 US Census data, the Town was able to calculate the number of people per occupancy type and estimate those numbers for 2020.

The data pertaining to the four schools within Swansboro was provided by Maureen Jones, Administrative Assistant in the Onslow County Schools Auxiliary & Information Services Department.

The current values of municipally owned buildings were taken from current insurance policies, and the infrastructure data was provided by the Public Works department. ONWASA provided the replacement values for all water and sewer infrastructure.

4. Capability Assessment

All existing policies and programs that might lend support to hazard mitigation were examined and are listed in Worksheet #8.

5. Interim Conclusions

During the development of the 2014 plan, it was agreed that the predominant hazard for the Town of Swansboro is damage from hurricane winds and associated flooding. The community goals were established primarily to deal with the aftermath and the need to bring life back to normal as soon as possible.

6. Values and Goals

The Town of Swansboro has always striven to minimize storm damage and personal injury and to expedite cleanup after storms.

7. Mitigation Strategies and Policies

The mitigation strategies were determined by considering what was currently being done and additional strategies that might be useful in accomplishing the goals.

8. Implementation Responsibilities

The responsible departments or individuals were set forth based on their general assignment during previous disasters.

9. Monitoring, Evaluating, and Reporting Progress

Most of the strategies were found to be ongoing activities or projects that Town departments are always trying to improve. Some were “budget sensitive”, and are tied to budget years.

10. Revisions and Updates

The Town intends to have constant reviews of the programs underway but also to have an annual evaluation in which to consider new ideas or make “midcourse corrections”.

G. Adoption of the Plan

Staff presented the Swansboro Annex to the Onslow County Multi-Jurisdictional Hazard Mitigation Plan at a public forum held on June 26, 2014 for citizen review. Subsequently, David Harvell, Town Manager, submitted the full plan to the Swansboro Board of Commissioners which adopted a resolution adopting the full plan following the plan being adopted by Onslow County and then approved by North Carolina Emergency Management (NCEM) and the Federal Emergency Management Agency (FEMA), Region IV. The resolution adopting the plan can be found in Attachment 2 to this annex.

II. COMMUNITY VALUES AND GOALS

The Town of Swansboro's predominant natural hazard is damage from hurricane winds and associated flooding. The community goals were established primarily to deal with hurricanes and their aftermath. The Town has always striven to minimize storm damage, personal injury, and to expedite cleanup after storms to minimize the stress of such storms and to bring life back to normal as soon as possible. The Town's overall community values and goals are:

- Prevent loss of life and personal injury from all natural hazards;
- Minimize the damage to public infrastructure resulting from natural hazards;
- Manage future development so that vulnerability of private property to natural hazards is reduced;
- Expedite post disaster clean-up, repair and reconstruction;
- Protect the fragile natural and scenic areas located along the White Oak River and tributary creeks.
- Develop a Comprehensive Emergency Management Plan.

To achieve the broad Town goals listed above, an analysis of these goals was conducted. See Worksheet #1, Community Goals.

III. MITIGATION STRATEGIES AND POLICIES

A. Objectives

The Town of Swansboro supports Onslow County in the attainment of its objectives and has similar goals (See Onslow County Multi-Jurisdictional Hazard Mitigation Plan, Hazard Mitigation Implementation Strategies).

Hazard Mitigation Implementation Strategies (See Section B below)	Goals
1,2,4,9,10,14	Prevent loss of life and personal injury from all natural hazards
5,6,12,14	Minimize the damage to public infrastructure resulting from natural hazards
1,2,3,5,7,8,11,12	Manage future development so that vulnerability of private property to natural hazards is reduced
5, 9, 10, 14	Expedite post disaster clean-up, repair and reconstruction
1,2,11,12	Protect the fragile natural and scenic areas located along the White Oak River and tributary creeks
1,2,3,4,5,6,7,8,9,10,11,12,13,14	Develop a Comprehensive Emergency Management Plan

B. General Hazard Mitigation Strategies

FEMA provides four mitigation policy categories for identifying mitigation strategies and measures. They are as follows:

1. **Prevention:** Preventive activities are intended to keep hazard problems from getting worse. They are particularly effective in reducing a community's future vulnerability, especially in areas where development has not occurred or capital improvements have not been substantial.
2. **Property Protection:** Property protection measures protect existing structures by modifying the building to withstand hazardous events or removing structures from hazardous locations.

3. **Natural Resource Protection:** Natural resource protection activities reduce the impacts of natural hazards by preserving or restoring natural areas and their mitigative functions. Such areas include floodplains, wetlands and dunes. Parks, recreation or conservation agencies and organizations often implement these measures.
4. **Structural Projects:** Structural mitigation projects are intended to lessen the impact of a hazard by modifying the environment or natural progression of the hazard event. They are usually designed by engineers and managed or maintained by Public Works Staff.

The following mitigation strategies have been decided upon, based on approaches and ideas used in other jurisdictions and the County to achieve the stated goals (See Onslow County Multi-Jurisdictional Hazard Mitigation Plan). Each mitigation strategy has been identified with the FEMA mitigation policy category it meets. For example, if the strategy meets the FEMA Prevention category, it will be identified with a “(P)”.

1. Swansboro will develop, enhance, and implement education programs aimed at mitigating natural hazards and reducing the risk to citizens, public agencies, private property owners, businesses, and schools (Planning Director, Public Safety; Ongoing). (P)
2. Swansboro will send a flood information article once a year to all in-town property owners in Swansboro through the quarterly newsletter. The information article should include general identification of the local flood hazards, and include information on flood safety, flood insurance, property protection, etc. (Town Clerk, Planning Director; Annually). (P)
3. The Town will consider entry into the FEMA Community Rating System (CRS) and pursue credit points through the program which could result in a reduction in insurance rates for citizens (Planning Director; Ongoing). (P)
4. The Town will maintain a listing of streets that would serve as main evacuation routes in the event of a hurricane. This is a part of the Town’s Storm Preparedness Plan, which is updated annually (Public Safety; Annually). (P)
5. Swansboro will continue to maintain ditching along streets to facilitate drainage throughout the Town (Public Works; Ongoing). (SP)
6. Swansboro will ensure as new lift stations are installed, the electrical panels are located above the base flood elevation (Building Inspector, Planning Director, ONWASA; Ongoing). (PP)
7. Swansboro will maintain tie-down requirements for LP tanks and above ground heating oil tanks that are in the flood hazard areas (Building Inspector; Ongoing). (PP)
8. Swansboro will continue to require the addition of tie-downs for all sheds, garages, carports, etc., that do not have walls secured to the floor in a

manner meeting the NC Building Code. This is applied Town wide (Building Inspector; Ongoing). (PP)

9. Swansboro will continue to monitor the roads on private property within the town limits to ensure they can accommodate emergency vehicles through a routine inspection program (Public Safety). (P)
10. Swansboro will develop an evacuation strategy for hazardous material response which will be applied Town wide (Public Safety; Ongoing). (P)
11. The Town will continue to enforce the requirements of the Flood Damage Prevention Ordinance (Planning Director; Ongoing). (PP)
12. The Town will continue to comply with the State's stormwater management requirements (Planning Director; Ongoing). (NRP, PP)
13. The Town will access the resources and data available through Onslow County Emergency Services relevant to the mitigation of natural hazards and meet annually to coordinate progress on the Hazard Mitigation Plan (Public Safety; Ongoing/Annually). (P)
14. The Town will work to develop a Comprehensive Emergency Management Plan (Public Safety; Ongoing). (P)

C. Specific Hazard Mitigation Strategies

The Town of Swansboro has continuously implemented and will continue to implement the following mitigation strategies:

1. Actions

A. To Counter Rising Water/Flooding:

- Swansboro addresses beaver dams as the need arises.
- Swansboro falls under the Coastal Area Management Act (CAMA), and will continue to comply with its regulations.
- Swansboro has participated in the NFIP since 1993 and will consider applying for classification under the Community Rating System.
- Duties of the Flood Plain Administrator have been assigned.
- Flood Insurance Rate Maps are available from FEMA and the Town will continue to maintain those maps and make them available to the public.
- Swansboro addresses drainage issues as the need arises.
- FEMA and the NFIP have established elevation requirements for construction.
- Swansboro removes debris as soon as possible after a heavy storm event.

- Swansboro provides technical assistance to property owners regarding protection of their property.
- B. To Counter High Winds:
- The Jones-Onslow Electric Membership Cooperative and Progress/Duke Energy provide electric power to the community and they have a continuous program of tree trimming.
 - Swansboro removes debris as soon as possible after a high wind event utilizing Town employees, volunteers, contractors, and other available assistance.
- C. To Counter Winter Storms:
- Swansboro relies on NCDOT to maintain major thoroughfares.
 - The County Health Department and DSS provide information on heating assistance.
- D. To Counter Wildfire:
- The NC Forestry Service has an ongoing wildfire education program.
 - Daily District Readiness Plans (which report fire activity) are available to emergency personnel and the general public at http://www.dfr.state.nc.us/fire_control/fc_rpm.asp.
 - The Fire Chief or his/her designee meets monthly with representatives from the NC Forest Service at the Onslow County EOC.
- E. To Counter Drought:
- ONWASA has a water conservation plan in effect and maintains the water infrastructure for the Town.
- F. Miscellaneous/ General:
- Various government agencies including the County Health Department, State Division of Social Services, FEMA, and NC Emergency Management provide educational information and resources to counteract hazards.
 - The Public Safety department partners with Onslow County Emergency Services to alert the special needs population of the need to evacuate.
 - Mitigation strategies are incorporated into the environmental impact review of projects.
 - Citizens are advised to monitor adverse weather conditions through available media sources. The Town also partners with Onslow

County Emergency Services to disseminate hazard information to the public.

2. Policies

The policies that have been developed and that will be monitored and improved are shown below. They reinforce the mitigation strategies that are already being implemented and those that are planned.

- A. Make use of Swansboro floodplain, parcel data, and aerial photographs in digital format. The Town of Swansboro relies on Onslow County GIS, FEMA, and NC Emergency Management to furnish these data.
- B. Swansboro will provide assistance to citizens in obtaining documents about flood insurance, flood protection, floodplain management, and the natural and beneficial functions of floodplains. Many documents are available free of charge from the Federal Emergency Management Agency (FEMA).
- C. Swansboro will consider applying for CRS classification and pursue credit points through the program which could result in a reduction in insurance rates for citizens.
- D. Swansboro will continue to actively pursue state and Federal grant funds to assist in the hazard mitigation recommendations included in the plan.
- E. Swansboro will continue to encourage projects undertaken by the Town Public Safety Department, Town Public Works, Town Parks and Recreation Department, and ONWASA that will lessen the vulnerability of the Town and its residents to natural hazards.
- F. Swansboro will develop a Comprehensive Emergency Management Plan.
- G. The mitigation strategies will be reviewed at least yearly to evaluate progress and identify new strategies.

The following documents also have a bearing on the Town's mitigation strategies:

- CAMA Land Use Plan
- Town of Swansboro Unified Development Ordinance (includes the Zoning, Subdivision, and Flood Damage Prevention ordinances)
- Town of Swansboro Code of Ordinances
- NC State Building Codes and Inspections

D. Geographic Planning Area

Eleven planning areas were identified where flood events regularly occur. These planning areas include areas around the White Oak River, Halls Creek, Foster Creek, Dennis Creek, Hawkins Creek, Hominy Creek, Corbett Creek, Montford Creek, Stevens Creek, Queens Creek, and some small tributaries or

areas very close to the FEMA-established flood zones. See Worksheet #2 for more information.

IV. IMPLEMENTATION

A. Process

The Swansboro portion of the Onslow County Hazard Mitigation Plan will be implemented through the delegation of assignments by the Town Manager, and as specified within this plan. In Section III, Specific Hazard Mitigation Strategies, mitigation actions are listed and assigned to specific departments or divisions. There are several established policies that also support the goals and objectives of the Hazard Mitigation Plan. These are shown on Worksheet #5, Geographic Planning Area (GPA) Policies (Town Wide).

It will be the responsibility of the Town Manager to ensure these actions are ultimately carried out no later than any target completion dates unless reasonable circumstances prevent their implementation (i.e. lack of funding availability). Otherwise the completion of each proposed mitigation action has been determined feasible within the timeframe allowed. It should be noted that a great many of these mitigation actions are intended to be ongoing without start or completion dates and are being accomplished as a normal part of a department's routine duties.

B. Funding Sources

Local funds allocated during the annual budgeting process as well as grant funding will be explored to help offset the cost of implementing the hazard mitigation plan.

V. MONITORING, EVALUATING, AND REPORTING PROGRESS

A. Monitoring

Staff will be responsible for monitoring the implementation of this hazard mitigation plan annex. The review of the plan will take place annually and the results reported to the Town Manager.

B. Evaluating

1. Benchmarks

New tasks will be reviewed according to the schedule established for their accomplishment. Those activities already underway will be evaluated on an annual basis for continued effectiveness or viability.

2. Responsibility

a. Updating the Vulnerability Assessment

The vulnerability assessment (Appendix B) will be annually reviewed and updated.

b. Updating the Capability Assessment

The capability assessment (Appendix C) will be annually reviewed and updated.

C. Public Involvement

The plan will be available on the Town web page and will be made available at the Swansboro Public Library for review. The Town will be receptive to public comment and recommend changes that may come from the Town's citizens.

D. Reporting

The Planning Director will prepare a plan maintenance report annually for the Town Manager. It will report each of the measures underway or recommended and report on the effectiveness of the measures and make recommendations for changes.

VI. REVISIONS AND UPDATES

The Swansboro Town Manager will review the plan maintenance report and present any significant findings to the Board of Commissioners with any recommendations for interim updates and revisions that he considers advisable. As updates occur, the date, reason and responsible party should be noted. The entire plan will be updated on a five-year cycle and revisions submitted to the NC Department of Emergency Management and FEMA.

APPENDIX A: HAZARD IDENTIFICATION (SEE *ONslow COUNTY MJ OMP*)

See attached Worksheet #6, Hazard Identification and Analysis Matrix, for Town of Swansboro prioritization.

A. Hurricanes

Between the years 1953 and 2002, there were thirty-five (35) hurricanes that in some way affected the Town of Swansboro. Fourteen (14) of these were significant enough that nationally, they had some statistic such as deaths or damage value applied.

No hurricane striking the Town of Swansboro has ever caused a recorded death. Property damage from flooding and fallen trees has occurred. The major expense to the community has been removal of debris after such storms.

B. Tsunamis

In recorded history, there have never been any reports of tsunamis striking eastern North Carolina, so this is considered a minimal threat, even though the impact could be severe.

C. Flooding

Significant flooding in Swansboro has not occurred often, and normally results from extreme rains, usually associated with hurricanes and nor'easters. The most recent significant event was in 2010 which resulted in road closures and some infrastructure damage.

D. Nor'easter

The last recorded nor'easter causing any damage in Swansboro was in March 1993. This damaged several roofs in commercial areas, numerous signs, and many buildings lying along the White Oak River, surrounding creeks,**1 and low lying areas.

E. Tornado/ Extreme Storms

Although tornado warnings occur several times a year in eastern North Carolina, Swansboro has no recorded confirmed tornado hit.

F. Drought/ Heat Wave

Swansboro on average, experiences adequate rainfall, and does not generally suffer from drought.

G. Wildfire

Parts of Swansboro are susceptible to wildfires due to the proximity of large stands of timber and fallen timber. There have been no wildfires reported within the last 10 years in the Swansboro town limits. There have been limited occurrences within the secondary fire district. In conjunction with the NC Forestry Service, Swansboro is working to develop a plan for mitigation and response to wildfire.

H. Winter Storm/ Freezes

Swansboro experiences winter storms and freezes causing minor problems annually, with more severe storms occurring intermittently.

I. Earthquake

There is no known record of seismic activity in Swansboro.

J. Landslide

Landslides are not considered an immediate threat.

K. Dam/ Levee Failure

There are no dams or levees located in Swansboro.

L. Volcano

There is no known record of volcanic activity in Swansboro.

M. Sinkholes

Sinkholes are considered a limited threat in Swansboro, occurring intermittently.

APPENDIX B: VULNERABILITY ASSESSMENT

A. Narrative Summary:

The data in this appendix was taken from county tax maps, GIS databases, insurance records, Town facility databases and Federal census data.

1. Major Physical Features in the Town of Swansboro

The Town of Swansboro is located in the extreme southern edge of Onslow County in southeastern North Carolina and is bordered by the White Oak River, Queens Creek, and Carteret County.

2. Critical Facilities and Public Buildings

The Town of Swansboro considers critical facilities to be those structures from which essential services and functions for the continuation of public safety actions and disaster recovery are performed or provided. These facilities are essential to the health, safety, and viability of the community.

The inventory of critical facilities has been compiled using best available data from the Swansboro Finance, Public Safety, and Public Works departments. They have been shown on the Critical Facilities Map of Swansboro, Map #9.

These facilities include the supporting “life-line” infrastructure essential to the mission of critical facilities. For mitigation planning purposes, all critical facilities will be classified according to the following categories and numbered priority scales:

LEVEL 1: Must not lose operational capability

- Swansboro Public Safety Headquarters/ EOC
- EMS/ Police/ Fire Communications Tower
- Water Tower (ONWASA)
- Wastewater Plant (ONWASA)
- Wastewater pump lift stations (ONWASA)

A major goal of the Town of Swansboro is for these facilities to remain operational throughout any disaster in order to continuously provide vital public services.

LEVEL 2: Must be operational within 24 hours following event

- Swansboro Town Hall
- Major roads and bridges
- Major government buildings
- Emergency shelters

Initially the functions normally provided by Level 2 facilities may be provided by Level 1 facilities until these Level 2 facilities are once again

operational. If they cannot be operational within 24 hours, some of their functions will be transferred.

B. Swansboro Critical Facilities List:

Swansboro Town Hall	601 W. Corbett Ave.
Swansboro Public Safety/EOC	609 W. Corbett Ave.
ONWASA Wastewater Treatment Plant	99 Williams Road
Public Works	101 Fifth Street

Shelters (in partnership with Onslow County)

Swansboro High School	161 Queens Creek Rd.
Swansboro Middle School	1240 West Corbett
Swansboro Elementary School	118 School Road

C. Community Exposure to all Hazards

1. Only flooding can generally be considered site-specific because it occurs in the areas adjacent to White Oak River, local creeks, and major streams feeding into the White Oak River. These are the areas most susceptible to flooding. All other hazards that Swansboro may be subject to are not site-specific, but may occur throughout the Town of Swansboro.

2. Repetitive Loss Structures:

The National Flood Insurance Program lists 17 (2011) buildings that are repetitive-loss structures in the Town of Swansboro. The Town will support the elevation of structures above the base flood elevation as an alternative when acquisition is not possible.

3. Geographic Planning Areas and Demographics for Each Hazard:

- a. Documentation of Loss Estimates (See Onslow County MJ HMP).
- b. Geographic Planning Areas Process
The geographic planning areas were selected based on the types of hazards that have been experienced during the last fifty years and where the damage was located.

c. Geographic Planning Areas Hazards

The actual hazards are also based on the experience of the community.

d. Geographic Planning Areas Present and Future Vulnerabilities

The only vulnerabilities that can be anticipated are along the river and its tributaries. These are the only fixed points where damage has occurred due to specific known events (flooding due to hurricanes).

4. Geographic Planning Area Vulnerability Assessment:

As described elsewhere, the primary hazards affecting the Town of Swansboro are hurricanes and associated flooding. The major activity and public expenditures that are associated with these events are debris cleanup and disposal. See Worksheet #7 – Geographic Planning Area (GPA) Vulnerability Assessment – Town Wide (Town of Swansboro).

APPENDIX C: CAPABILITY ASSESSMENT

A. Existing Policies and Programs

1. CAMA Land Use Plan

The CAMA Land Use Plan is intended to fulfill the requirement for the preparation of a Core CAMA Land Use Plan. The Town of Swansboro Board of Commissioners adopted an update to the plan on September 15, 2009. Certification by the Coastal Resources Commission was achieved on November 25, 2009. The plan was developed to protect natural resources and to ensure effective and efficient use of infrastructure.

2. Unified Development Ordinance

The Town of Swansboro Unified Development Ordinance (UDO) protects property values and natural resources, and sets the parameters for development. The UDO includes Articles related to Zoning, Flood Damage Prevention, and Subdivisions.

3. Building Codes and Inspections

The Town of Swansboro has adopted the North Carolina State Building Code, which provides requirements (tie-downs, straps, etc.) for protecting buildings that must be installed during the initial construction.

B. Jurisdictional Capability

1. Legal

As described in the Town Code of Ordinances and in NC General Statute 160A-147, Swansboro has a Council-Manager form of government. Currently, the Town has five Commissioners, the two of which receive the largest number of votes serve four-year terms, and the remaining three serve two-year terms. The Mayor serves a four-year term.

2. Fiscal

The Town will explore grant opportunities for hazard mitigation to supplement current budgetary allocations.

3. Political

When true value or benefit is shown when compared to cost, the Board of Commissioners will support hazard mitigation measures.

4. Technical

The Town has the technical ability to develop the necessary ordinances, regulations or change existing rules to meet the needs of hazard mitigation.

5. Institutional

The Town has the professional staff either to accomplish the tasks shown or to contract the work to be done and monitored.

C. Analysis of Capability

After gathering the preceding capability information, the data was analyzed and evaluated. The data provided the framework for developing the Town's recommendations for specific mitigation actions. The data draws attention to special opportunities currently viable for the Town to capitalize upon, and identifies shortfalls in the Town's jurisdiction's capabilities.

Worksheet #8 – Community Capability Assessment – Town of Swansboro provides a summary of the Town's existing policies, programs, and their effectiveness at mitigating natural hazards. In general, this assessment shows that the Town has been committed to mitigating the effects of natural hazards, but in response to recent storm events, additional action may need to be taken.

An acceptability assessment is a useful analytical step, which can help the Town of Swansboro both prioritize and focus limited resources on the most critical of its mitigation needs. Having reviewed which natural hazards pose the greatest threats, the capability of the Town to respond, and the particular areas within the Town's planning jurisdiction that are most vulnerable, the Town can then decide whether this level of risk is acceptable. Town officials can use these conclusions to focus local mitigation efforts on those areas where they are most critically needed, thus making the most of limited financial personnel, and material resources. Conclusions can also help determine whether it is necessary to increase the area's capability in certain areas to reduce its vulnerability.

WORKSHEET #1: COMMUNITY GOALS TOWN OF SWANSBORO

Goal Category (General; Future Development; Existing Structures; Public Education & Outreach; Redevelopment; Natural Resource Protection)	Goal Statements (Include source reference)	New or Existing Goal (Circle One)		Hazard Threat Addressed (type of hazard and/or location)
1. General	Prevent loss of life and personal injury from natural hazards.	New	Existing	All Hazards
2. Existing Structures	Minimize the damage to public infrastructure resulting from natural hazards.	New	Existing	All Hazards
3. Future Development	Manage future development so that vulnerability of private property to natural hazards is reduced.	New	Existing	All Hazards
4. General	Expedite post-disaster clean up, repair and reconstruction.	New	Existing	All Hazards
5. Natural Resource Protection	Protect the fragile natural and scenic areas located along the White Oak River and tributary creeks	New	Existing	All Hazards
6. General	Develop a Comprehensive Emergency Management Plan	New	Existing	All Hazards

WORKSHEET #2: GEOGRAPHIC PLANNING AREA POLICIES (ALL HAZARDS) TOWN OF SWANSBORO

Policy	Type(s) of Hazard This Policy will Target	Funding The amount and source: local match required?	Responsible Party Start & Completion Date	Benchmarks and Indicators of Progress Monitoring and Evaluation	Priority (High, Medium, Low)
1. The Town will continue to actively pursue state and Federal grant funds to assist in the hazard mitigation recommendations included in the plan	All Hazards	Town of Swansboro General Fund \$ Unknown	All departments review grant notifications as they become public, determining need and eligibility. Ongoing	This is an ongoing activity	Medium
2. Swansboro will continue to encourage projects undertaken by the Swansboro Public Safety Department, Public Works Department, Parks and Recreation Department, and ONWASA that will lessen the vulnerability of the Town and its residents to natural hazards	All Hazards	Town of Swansboro General Fund/ONWASA \$ Unknown	All Departments Ongoing	As ideas come forth through networking, etc., they are evaluated, and either the project is undertaken or funding is sought	Medium
3. Swansboro will develop a Comprehensive Emergency Management Plan	All Hazards	Town of Swansboro General Fund \$ Unknown	Public Safety Department Ongoing	Reviewed annually. Changes are made as they are necessary.	High

WORKSHEET #2: GEOGRAPHIC PLANNING AREA POLICIES (ALL HAZARDS) TOWN OF SWANSBORO – CONT.:

Policy	Type(s) of Hazard This Policy will Target	Funding The amount and source: local match required?	Responsible Party Start & Completion Date	Benchmarks and Indicators of Progress, Monitoring and Evaluation	Priority (High, Medium, Low)
4. The mitigation strategies will be reviewed annually to evaluate progress and identify new strategies	All Hazards	Town of Swansboro General Fund \$ Unknown	All Departments	Annual review in May of activities, plans, and proposed actions	Medium

WORKSHEET #3: GEOGRAPHIC PLANNING AREA POLICIES (FLOODING) TOWN OF SWANSBORO

Policy	Type(s) of Hazard This Policy will Target	Funding The amount and source: local match required.	Responsible Party Start & Completion Date	Benchmarks and Indicators of Progress Monitoring and Evaluation	Priority (High, Medium, Low)
1. Swansboro will make use of floodplain, parcel data, and aerial photographs in digital format. The Town relies on Onslow County GIS, FEMA, and NC Emergency Management to furnish these data.	Flooding	Town of Swansboro General Fund	Must negotiate with Onslow County GIS, FEMA, and NC Emergency Management to determine time frame	Data will be constantly checked for accuracy and completeness.	Medium
2. Swansboro will provide assistance to citizens in obtaining documents about flood insurance, flood protection, floodplain management, and the natural and beneficial functions of floodplains. Many documents are available free of charge from the Federal Emergency Management Agency (FEMA).	Flooding	Town of Swansboro General Fund \$ Unknown	Planning Director Ongoing	Annual Review of available documents.	Medium

WORKSHEET #3: GEOGRAPHIC PLANNING AREA POLICIES (FLOODING) TOWN OF SWANSBORO – CONT.:

Policy	Type(s) of Hazard This Policy will Target	Funding The amount and source: local match required.	Responsible Party Start & Completion Date	Benchmarks and Indicators of Progress Monitoring and Evaluation	Priority (High, Medium, Low)
3. The Town will consider entry into the FEMA Community Rating System (CRS) and pursue credit points through the program which could result in a reduction in insurance rates for citizens.	Flooding	Town of Swansboro General Fund \$ Unknown	Planning Director	Following the initial application, an annual evaluation and report is submitted to FEMA to determine CRS credit.	Medium
4. Swansboro will send a flood information article once a year to all in-town property owners in Swansboro through the quarterly newsletter. The information article should include general identification of flood hazards, and include information on flood safety, flood insurance, property protection, etc.	Flooding	Town of Swansboro General Fund \$ Unknown	Planning Director	Annual distribution through quarterly newsletter	Medium
5. The Town will continue to enforce the requirements of the Flood Damage Prevention Ordinance.	Flooding	Town of Swansboro General Fund \$ Unknown	Planning Director	This is an ongoing activity.	Medium
6. The Town will continue to comply with the State's stormwater management requirements.	Flooding	Town of Swansboro General Fund \$ Unknown	Planning Director and Public Works Department	This is an ongoing activity.	Medium

WORKSHEET #4: GEOGRAPHIC PLANNING AREA POLICIES (FLOOD HAZARD AREAS) TOWN OF SWANSBORO

Policy	Geographic Planning Area	Type(s) of Hazard This Policy will Target	Funding The amount and source: local match required.	Responsible Party Start & Completion Date	Benchmarks and Indicators of Progress Monitoring and Evaluation	Priority (High, Medium, Low)
1. Swansboro will continue to maintain ditching along streets to facilitate drainage throughout the Town.	Town wide/Flood Hazard Areas	Flooding	Town of Swansboro General Fund	Public Works Ongoing	Ongoing activity, year-round	High
2. Swansboro will ensure as new lift stations are installed the electrical panels are located above the base flood elevation.	Flood Hazard Areas	Flooding	Town of Swansboro General Fund	Planning Director/Building Inspector/ONWASA Ongoing	Ongoing, this will be monitored through the permitting and inspections of these facilities.	High
3. Swansboro will maintain tie-down requirements for LP tanks and above ground heating oil tanks that are in flood hazard areas.	Flood Hazard Areas	Flooding	Town of Swansboro General Fund	Building Inspector Ongoing	Ongoing, this will be monitored through the permitting and inspections of these facilities.	High

WORKSHEET #4: GEOGRAPHIC PLANNING AREA POLICIES (FLOOD HAZARD AREAS) TOWN OF SWANSBORO – CONT:

Policy	Geographic Planning Area	Type(s) of Hazard This Policy will Target	Funding The amount and source: local match required.	Responsible Party Start & Completion Date	Benchmarks and Indicators of Progress Monitoring and Evaluation	Priority (High, Medium, Low)
4. Swansboro will continue to require the addition of tie-downs for all sheds, garages, carports, etc., that do not have walls secured to the floor in a manner meeting the NC Building Code.	Flood Hazard Areas	Flooding	Town of Swansboro General Fund	Building Inspector Ongoing	Ongoing, this will be monitored through the permitting and inspections of these facilities.	High

WORKSHEET #5: GEOGRAPHIC PLANNING AREA POLICIES (TOWN WIDE)
TOWN OF SWANSBORO

Policy	Geographic Planning Area	Type(s) of Hazard This Policy will Target	Funding The amount and source: local match required.	Responsible Party Start & Completion Date	Benchmarks and Indicators of Progress Monitoring and Evaluation	Priority (High, Medium, Low)
1. Continue to actively pursue state and Federal grant funds to assist in the hazard mitigation recommendations included in the plan.	Town wide	All Hazards	Town of Swansboro General Fund	All departments review grant notifications as they become public, determining need and eligibility. Ongoing.	Ongoing	Medium
2. Swansboro will continue to encourage projects undertaken by the Public Safety Department, Public Works, and Parks and Recreation Department, and ONWASA that will lessen the vulnerability of the Town and its residents to natural hazards.	Town wide	All Hazards	Town of Swansboro General Fund	All departments Ongoing	Ongoing	Medium

WORKSHEET #5: GEOGRAPHIC PLANNING AREA POLICIES (TOWN WIDE)
TOWN OF SWANSBORO – CONT:

Policy	Geographic Planning Area	Type(s) of Hazard This Policy will Target	Funding The amount and source: local match required.	Responsible Party Start & Completion Date	Benchmarks and Indicators of Progress Monitoring and Evaluation	Priority (High, Medium, Low)
3. Swansboro will develop a Comprehensive Emergency Management Plan	Town wide	All Hazards	Town of Swansboro General Fund	Public Safety Department Ongoing	Reviewed annually. Changes are made as they are necessary.	High
4. The mitigation strategies will be reviewed at least yearly to evaluate progress and identify new strategies.	Town wide	All Hazards	Town of Swansboro General Fund	All Departments Ongoing	Annual Review in May of activities, plans and proposed actions.	Medium

WORKSHEET #6: HAZARD IDENTIFICATION AND ANALYSIS MATRIX
TOWN OF SWANSBORO

Hazard	Category / Degree of Risk					
	Probability	Impact	Spatial Extent	Warning Time	Duration	PRI Score
Atmospheric Hazards						
Drought and Heatwave	2	1	1	2	2	2.4
Hurricane & Coastal Storm	4	3	4	4	2	2.3
Tornado	3	3	4	4	1	2.4
Nor'easter	3	1	2	2	1	2.2
Winter Storm/Freezes	2	1	2	1	3	1.8
Geological Hazards						
Earthquake	1	1	4	4	1	1.3
Landslide & Sinkhole	3	2	2	2	1	2.2
Volcano	1	1	3	3	4	2
Tsunami	1	1	3	3	4	1.5
Hydrologic Hazards						
Dam & Levee Failure	1	1	1	1	4	2.2
Flooding	4	2	2	2	4	2.1
Other Natural Hazards						
Wildfire	2	1	2	4	2	1.7

*See Table 5.1, Priority Risk Index Summary, page 125 of the Onslow County Multi-jurisdictional Hazard Mitigation Plan for explanation of the Categories and the Degrees of Risk.

** PRI VALUE = [(PROBABILITY x .30) + (IMPACT x .30) + (SPATIAL EXTENT x .20) + (WARNING TIME x .10) + (DURATION x .10)]

WORKSHEET #6: HAZARD IDENTIFICATION AND ANALYSIS MATRIX
TOWN OF SWANSBORO- CONT:

Hazard	Category / Degree of Risk					PRI Score
	Probability	Impact	Spatial Extent	Warning Time	Duration	
Atmospheric Hazards						
Drought and Heatwave	Possible	Minor	Negligible	12-24 hrs	Less than 24 hrs	2.4
Hurricane & Coastal Storm	Highly Likely	Critical	Large	Less than 6 hrs	Less than 24 hrs	2.3
Tornado	Likely	Critical	Large	Less than 6 hrs	Less than 6 hrs	2.4
Nor'easter	Likely	Minor	Small	12-24 hrs	Less than 6 hrs	2.2
Winter Storm/Freezes	Possible	Minor	Small	More than 24 hrs	Less than 1 week	1.8
Geological Hazards						
Earthquake	Unlikely	Minor	Negligible	Less than 6 hrs	Less than 6 hrs	1.3
Landslide & Sinkhole	Likely	Limited	Small	12-24 hrs	Less than 6 hrs	2.2
Volcano	Unlikely	Minor	Negligible	6-12 hrs	More than 1 week	2
Tsunami	Unlikely	Minor	Negligible	6-12 hrs	More than 1 week	1.5
Hydrologic Hazards						
Dam & Levee Failure	Unlikely	Minor	Negligible	More than 24 hrs	More than 1 week	2.2
Flooding	Highly Likely	Limited	Small	12-24 hrs	More than 1 week	2.1
Other Natural Hazards						
Wildfire	Possible	Minor	Small	Less than 6 hrs	Less than 24 hrs	1.7

*See Table 5.1, Priority Risk Index Summary, page 125 of the Onslow County Multi-jurisdictional Hazard Mitigation Plan for explanation of the Categories and the Degrees of Risk.

**WORKSHEET #7: GEOGRAPHIC PLANNING AREA (GPA) VULNERABILITY ASSESSMENT
TOWN OF SWANSBORO**

Current Conditions				Potential Future Conditions (2020)		
Type of Development	Number of Existing Private Buildings (As of January 1, 2014)*	Current Value (As of January 1, 2014)*	Current Number of People	Projected Number of Private Buildings (If developed under existing policies)	Projected Value	Projected Number of People
Single-Family Residential	1134	\$232,002,210	2608**	1472	\$301,050,487	3763*****
Multi-Family Residential	300	\$35,886,420	690**	302	\$36,065,852	
Commercial	188	\$111,036,411	1800***	190	\$111,922,340	
Industrial	1	\$742,680	33***	1	\$742,680	
Other (Vacant)	363	\$30,198,330		215	\$17,844,468	
<u>Subtotal</u>	1986	\$409,866,051	5131	2180	\$467,625,826	3763

*Onslow County Tax Office

**U.S. Census Bureau, 2010 Average Household Size 2.30

***U.S. Census Bureau 2008-2012 American Community Survey

****U.S. Census Bureau 2010-2013 Annual Estimates of the Resident Population

WORKSHEET #7: GPA VULNERABILITY ASSESSMENT TOWN OF SWANSBORO – CONT:

Current Conditions				Potential Future Conditions (2020)		
Type of Development	Number of Existing Public Buildings and Critical Facilities	Current Replacement Value	Current Number of People	Projected Number of Public Buildings and Critical Facilities	Projected Replacement Value	Projected Number of People
ONWASA Sewage Treatment Plant	1	\$11,120,405	3	No plans for future expansion		
ONWASA Sewer Lift Stations	25	\$113,929.01	Varies			
ONWASA Water Towers	1	\$13,295	0			
Schools	Swansboro Elementary Swansboro Middle Swansboro High School Queens Creek Elementary	\$11,391,148 \$22,464,112 \$35,773,085 \$16,635,235	<u>Students/Staff</u> 593/68 797/89 1,079/113 597/99	None within next 6 years	\$15,264,138.32 \$30,101,910.08 \$47,935,933.90 \$22,291,214.90	<u>Students/Staff</u> 679/74 794/89 1,094/113 663/100
Infrastructure (roads, bridges, drainage, etc.)	Streets 12.32 miles Sidewalks 8.73 miles Curb and Gutter 8.73 miles 8" Cane Stone 12.32 miles	\$2,225,052.50 \$2,120,342.40 \$1,198,454.40 \$2,225,052.50	0	Streets 15.32 miles Sidewalks 11.73 miles Curb and Gutter 11.73 miles 8" Cane Stone 15.32 miles	\$2,804,172.80 \$2,848,982.40 \$1,610,294.40 \$2,804,172.80	0
Town Hall Administrative Offices, Public Works (3), old Town Hall, Recreation Center, Public Restrooms (3), Public Safety, Cigar Shop (Leased), Visitor's Center (Leased)	12	\$4,042,846	<u>Administrative</u> 16 full-time 3 part-time <u>Public Safety</u> 14 full-time 14 part-time 20 volunteer <u>Visitor's Center/ Cigar Shop</u> 3	10	\$3,498,211	<u>Administrative</u> 16 full-time 3 part-time <u>Public Safety</u> 14 full-time 14 part-time 20 volunteer <u>Visitor's Center</u> 2

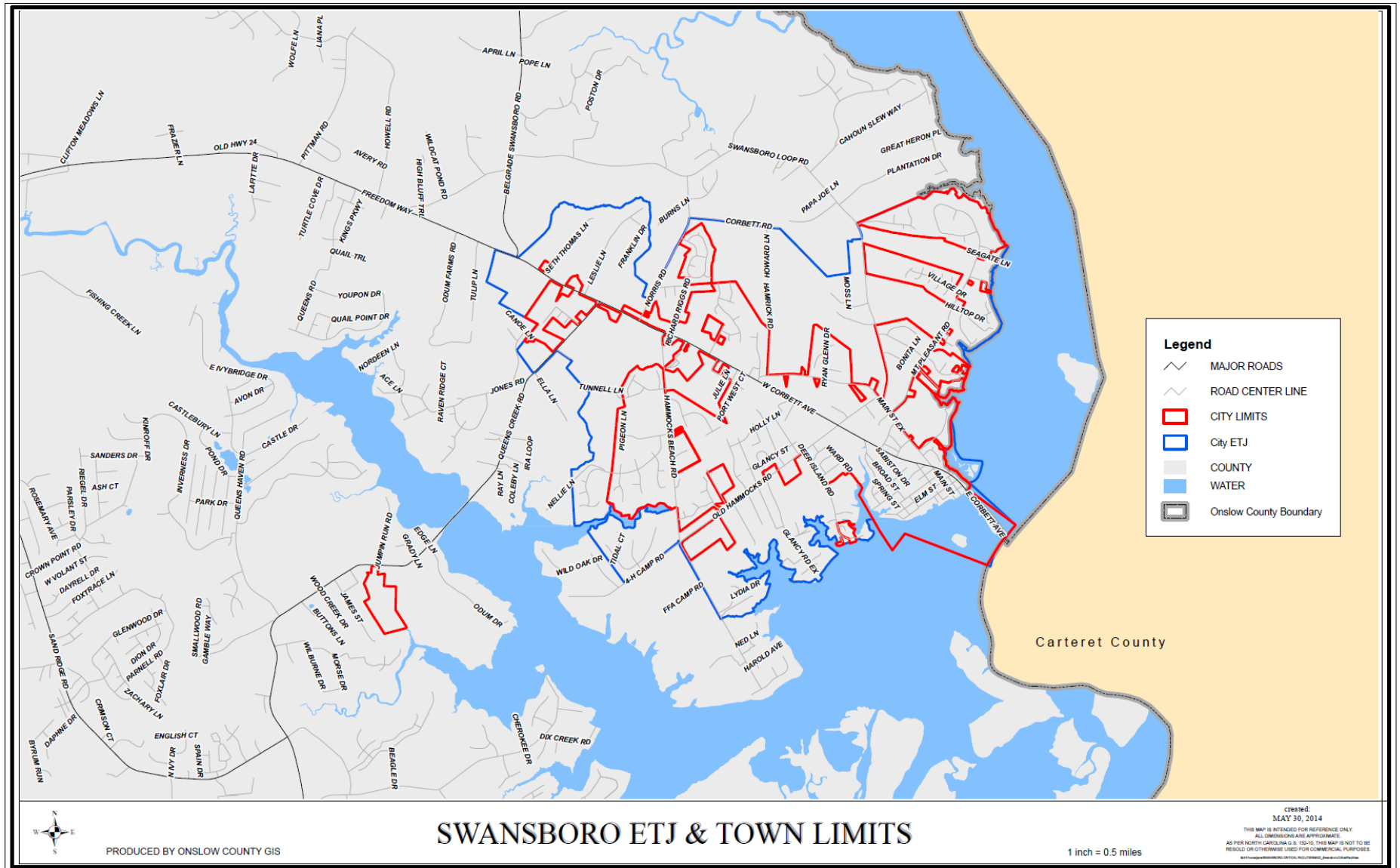
WORKSHEET #8: COMMUNITY CAPABILITY ASSESSMENT TOWN OF SWANSBORO

Policies and Programs (ex. Zoning Ordinance)	Policy/ Program Status (ex. Potential or Existing Policy/ Program)	Document Reference (ex. Comprehensive Plan and page number)	Effectiveness of Mitigation (ex. Low, Medium, High)	Rationale for Effectiveness (ex. Low, because allows development in flood plain)	Recommendations for Incorporating Into Hazard Mitigation Strategy (ex. Amend ordinance to restrict development in floodplain, page III-4 of plan)
CAMA Land Use Plan	Existing	Town of Swansboro CAMA Land Use Plan, Updated September 15, 2009	Medium	Protect natural resources; insure effective and efficient use of infrastructure	Continue to enforce standards
Zoning Ordinance	Existing	Town of Swansboro Unified Development Ordinance, Article 10	Medium	Protect property values, natural resources, and minimize hazards	Continue to enforce Town Ordinance
Building Codes and Inspections	Existing	North Carolina Building Code	High	Provides requirements that protect buildings	Continue to enforce State and Town of Swansboro standards
Subdivision Ordinance	Existing	Town of Swansboro Unified Development Ordinance, Article 20	Medium	Addresses the suitability of land for development and provides for runoff control	Continue to enforce Town standards

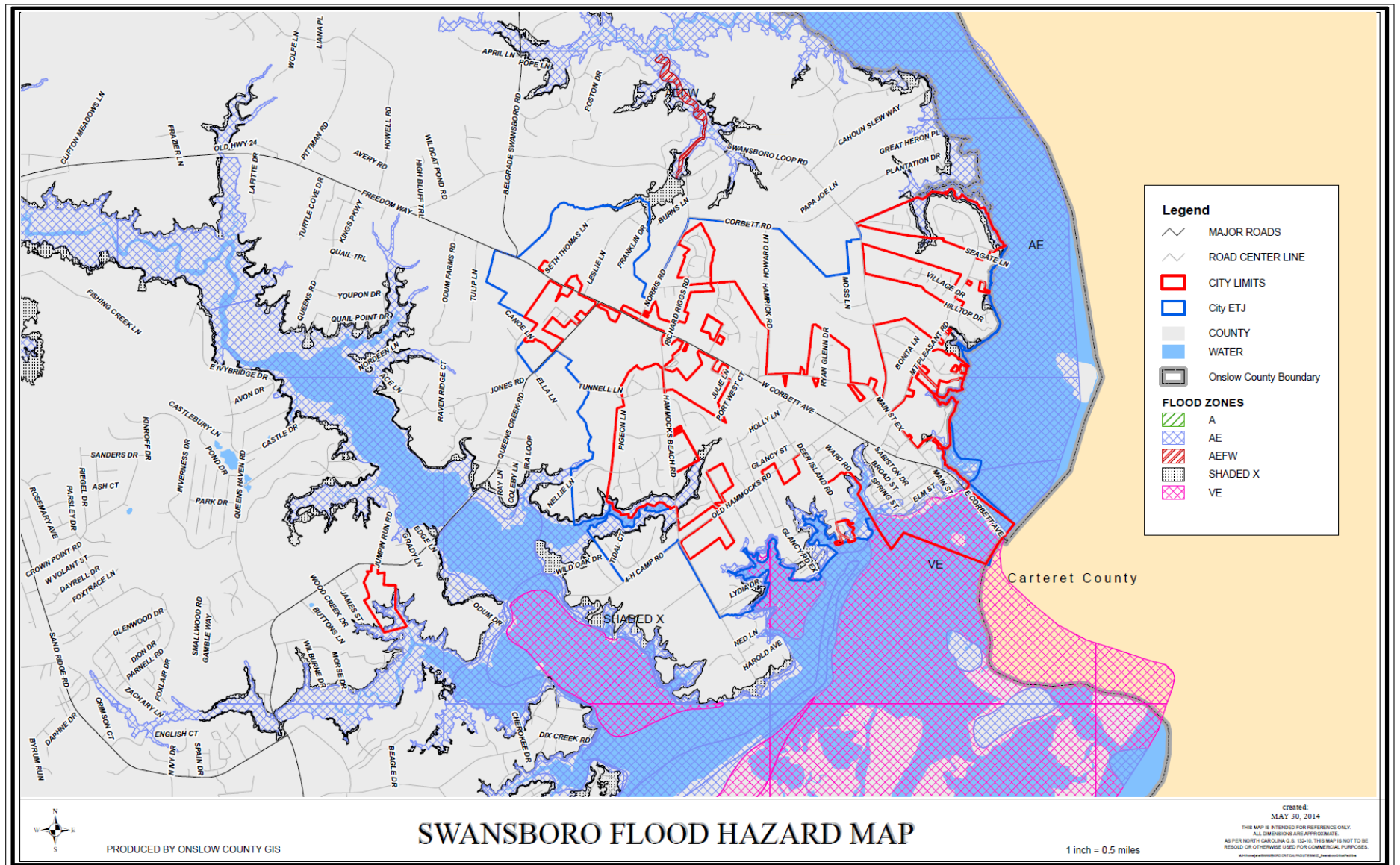
WORKSHEET #8: COMMUNITY CAPABILITY ASSESSMENT TOWN OF SWANSBORO – CONT:

Policies and Programs (ex. Zoning Ordinance)	Policy/ Program Status (ex. Potential or Existing Policy/ Program)	Document Reference (ex. Comprehensive Plan and page number)	Effectiveness of Mitigation (ex. Low, Medium, High)	Rationale for Effectiveness (ex. Low, because allows development in flood plain)	Recommendations for Incorporating Into Hazard Mitigation Strategy (ex. Amend ordinance to restrict development in floodplain, page III-4 of plan)
Flood Damage Prevention Ordinance	Existing	Swansboro Unified Development Ordinance, Article 21.	High	Addresses loss prevention related to flood events.	Recommend one foot freeboard above Base Flood Elevation (BFE).
NFIP and Community Rating System	Existing/Potential	Article 21, Unified Development Ordinance/Considering future application for CRS	High	Addresses loss prevention related to flood events	Annually provide information for Swansboro citizens.

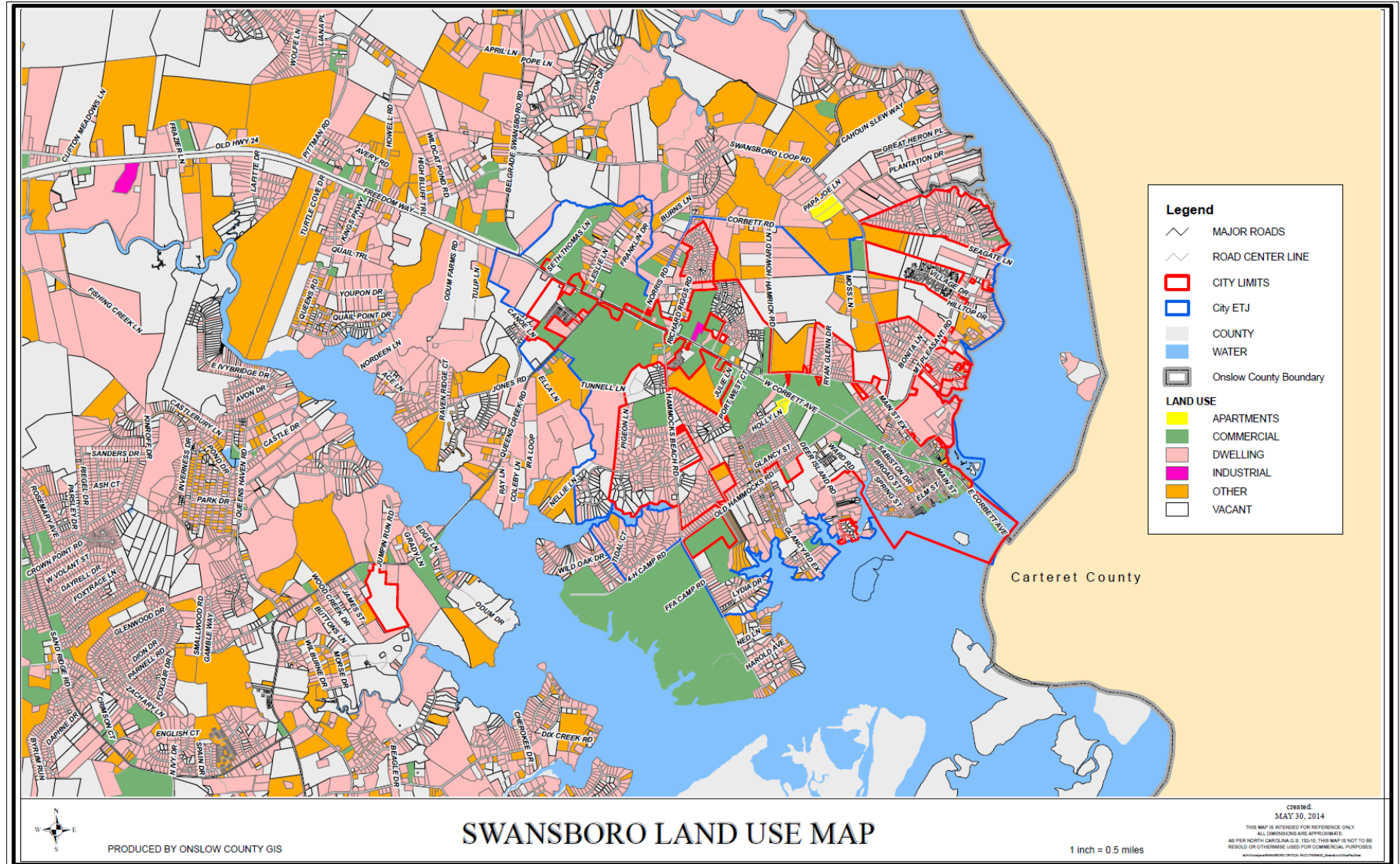
Swansboro ETJ & Town Limits - MAP # 1



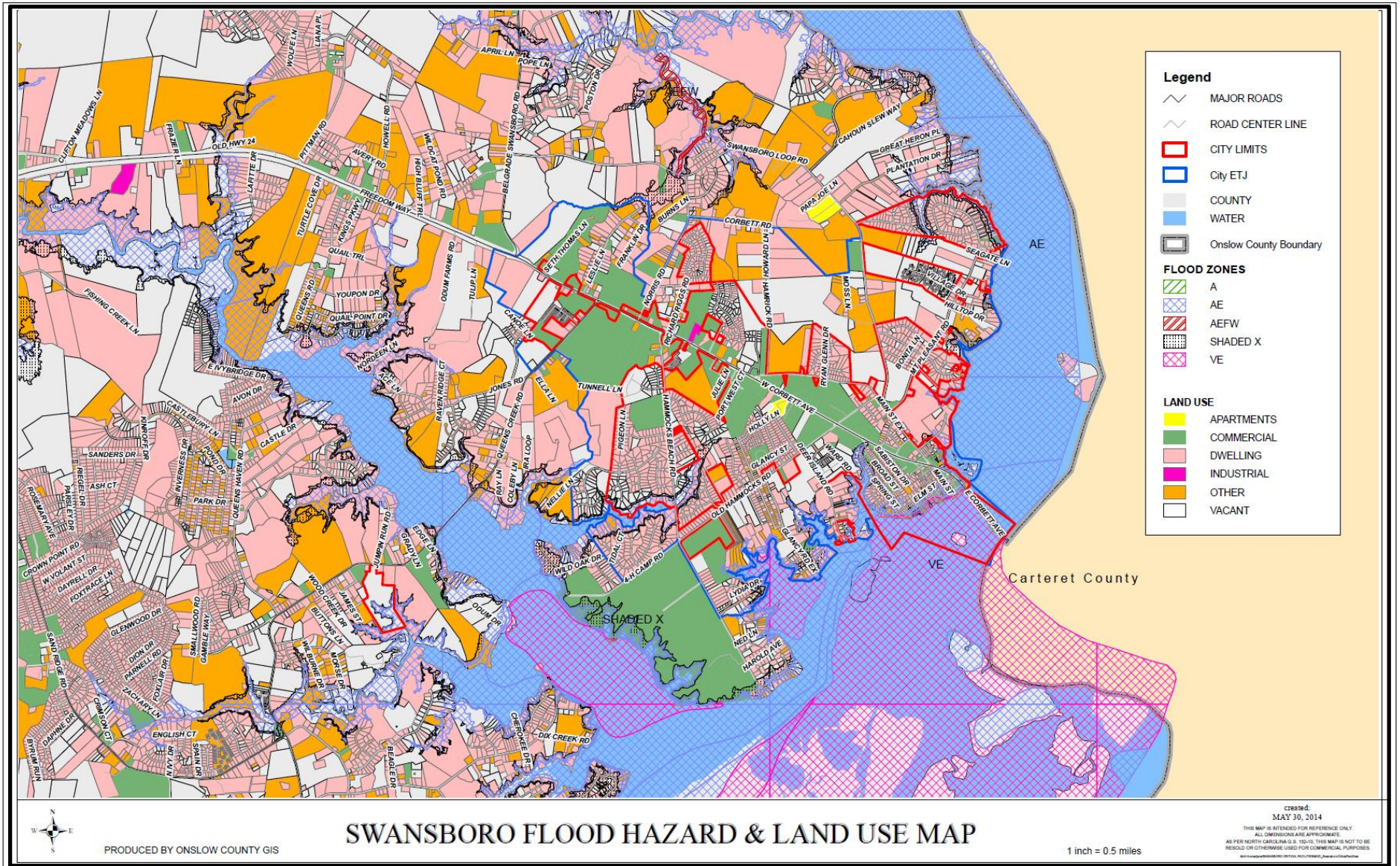
Swansboro Flood Hazard - MAP # 2



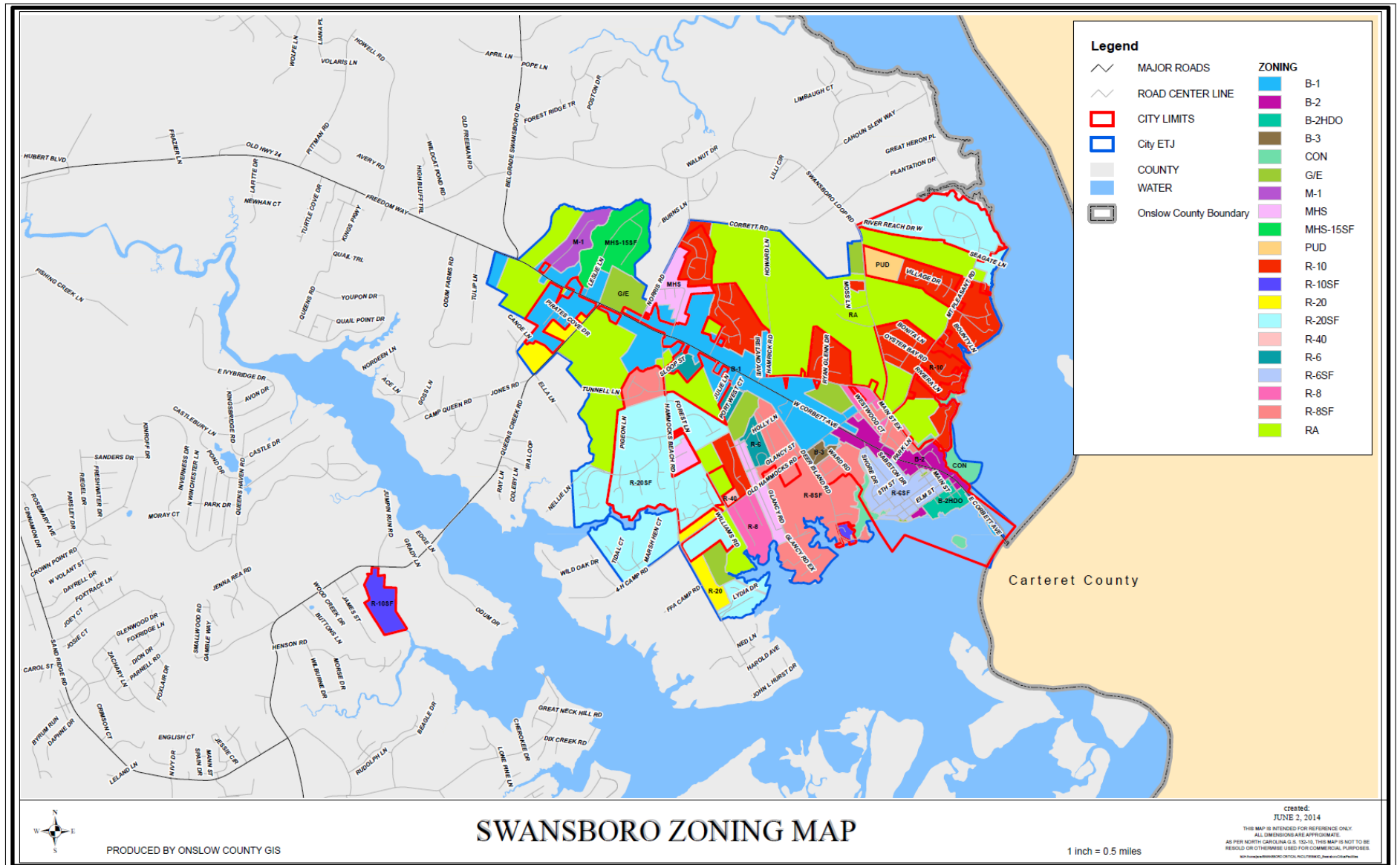
Swansboro Land Use - MAP # 3



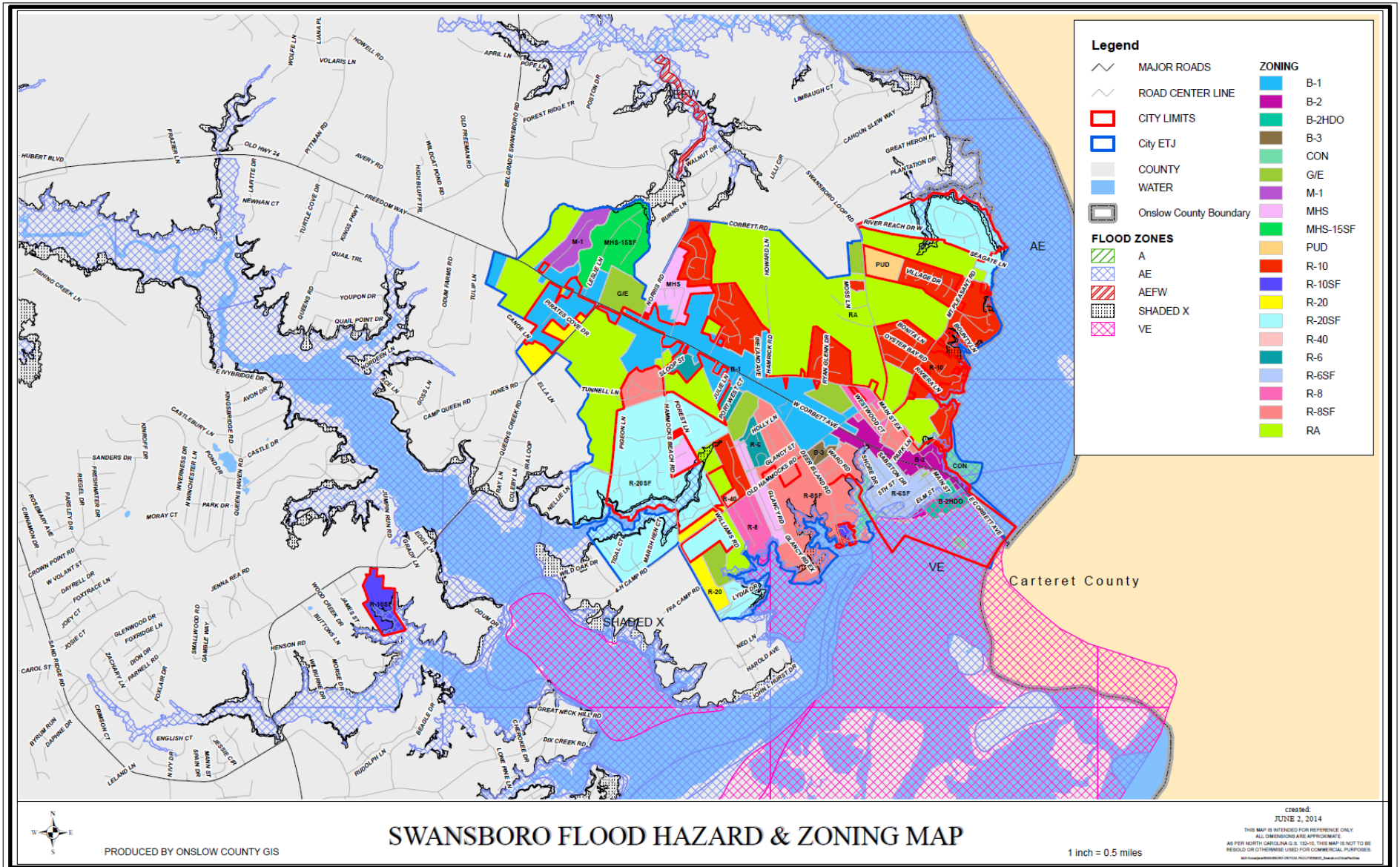
Swansboro Flood Hazard and Land Use - MAP # 4



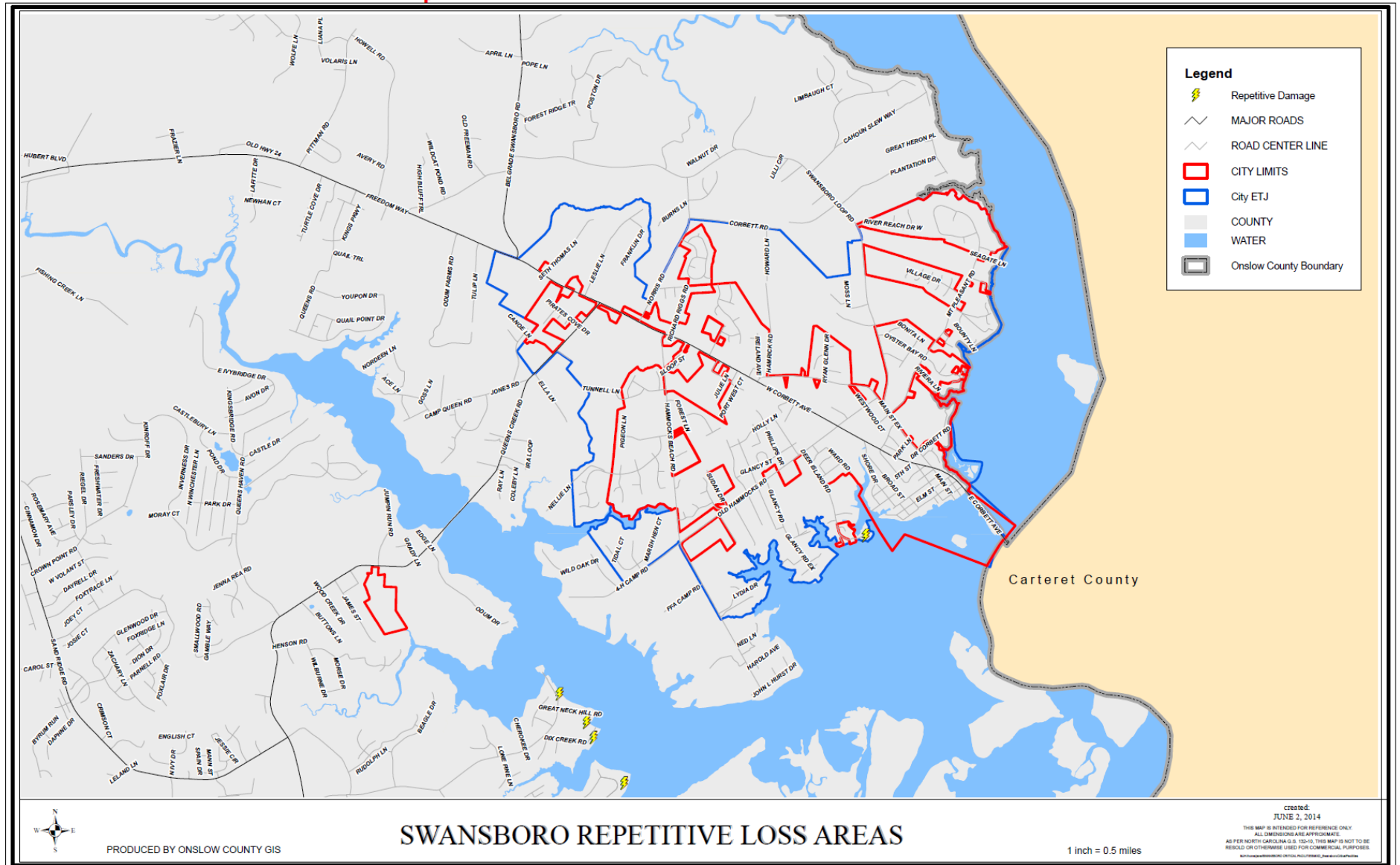
Swansboro Zoning - MAP # 5



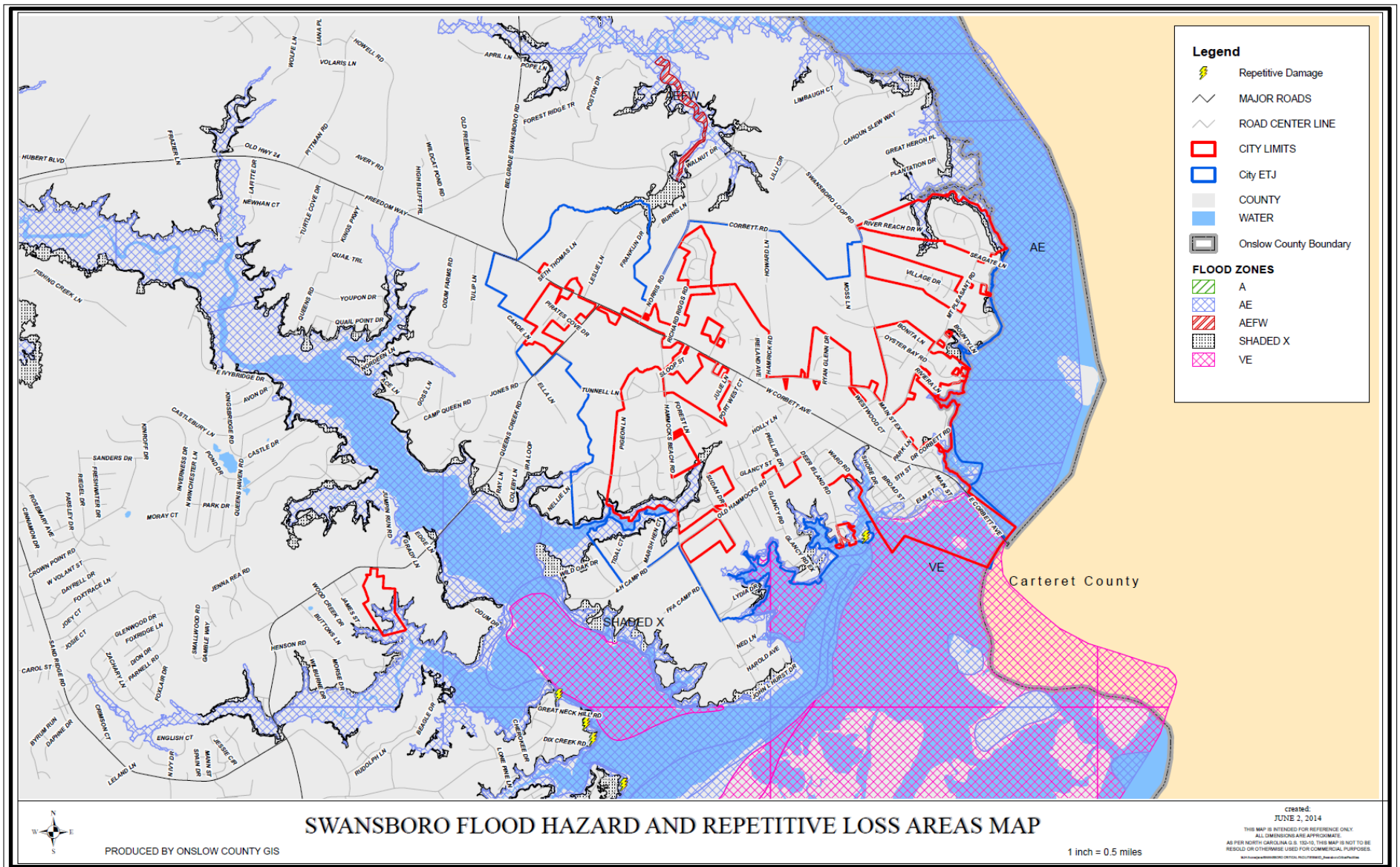
Swansboro Flood Hazard & Zoning - MAP # 6



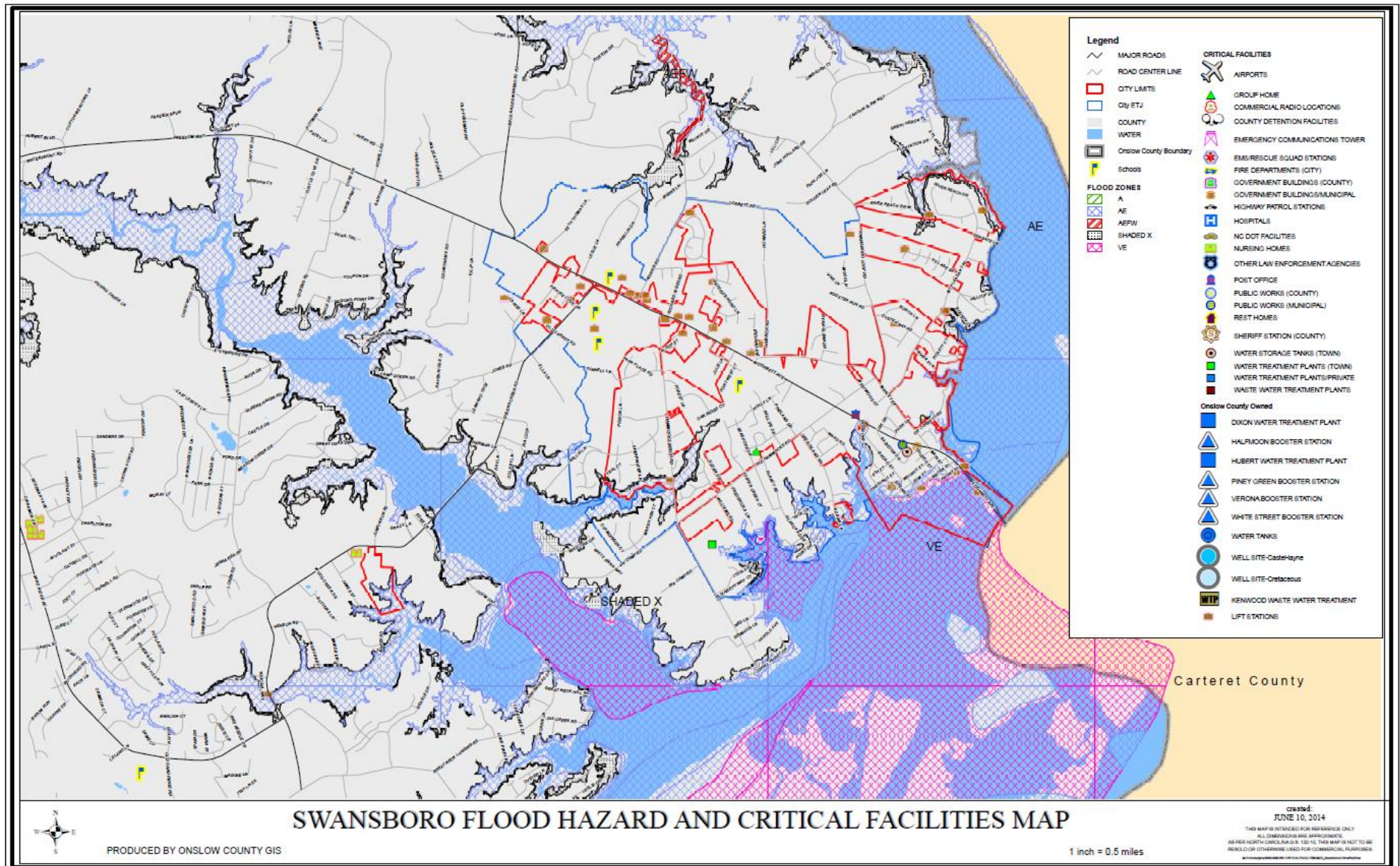
Swansboro Repetitive Loss Areas - MAP # 7



Swansboro Flood Hazard and Repetitive Loss Areas - MAP # 8



Swansboro Flood Hazard and Critical Facilities - MAP # 9



ATTACHMENT 1: PUBLIC FORUM

The Town of Swansboro conducted a Public Forum on the Hazard Mitigation Plan, Swansboro Annex, at the Swansboro Community Room on June 26th, 2014. The meeting was advertised in the Tideland News, a notice was posted at Town Hall, a notice was included in the Summer 2014 Town newsletter, a notice was posted on Facebook, a notice was sent out in the Town's Grapevine e-mail newsletter, and the notice was posted on the Town website.

PUBLIC NOTICE

Public Forum

Hazard Mitigation Plan Update

The Town of Swansboro will hold a public forum on Thursday, June 26, 2014 at 6:00 pm in the Community Room located at 601 W. Corbett Avenue. This meeting will allow interested parties to review the proposed updates to the Swansboro Annex to the Hazard Mitigation Plan which mitigates damages from natural disasters should they occur and insures the continuance of future public assistance from FEMA. This County-wide plan is updated every five years and includes an addendum from each municipality within the County.

For more information contact Jennifer Holland, Planning Director, at (910) 326-4428.

Run 6/18/14

ROSTER OF MEETING ATTENDEES

TOWN OF SWANSBORO
SWANSBORO COMMUNITY ROOM
JUNE 26TH, 2014

#	NAME/ADDRESS	TELEPHONE
1	Jennifer Holland, Planning Director 601 W. Corbett Ave., Swansboro, NC 28584	910-326-4428
2	Bob Ritchie, Public Safety Director 609 W. Corbett Ave., Swansboro, NC 28584	910-326-5908

ATTACHMENT 2: TOWN OF SWANSBORO OC MJ-HMP APPROVAL AND ADOPTION

BOARD OF COMMISSIONERS

Scott Chadwick, Mayor
Philip Keagy, Mayor Pro Tem
Patricia Turner, Commissioner
John Lister, Commissioner
Gery Boucher, Commissioner
Jim Allen, Commissioner



sm

OFFICE OF THE TOWN MANAGER

David M. Harvell, Town Manager
Paula W. Webb, Town Clerk/
Administrative Services Director

Town of Swansboro

Friendly City by the Sea • Established 1783

www.swansboro-nc.org

July 7, 2014

Stacie Miles
Deputy Director
Onslow County Emergency Services
1180 Commons Dr. N
Jacksonville, NC 28540

Dear Stacie,

The Town of Swansboro has actively participated in the planning process of updating the Swansboro Annex to the Multi-jurisdictional Onslow County Hazard Mitigation Plan, and we believe that we have fulfilled all of the plan criteria as required by FEMA.

At this time, we are approving the plan for submittal to NCDDEM and FEMA for adoption. Following their adoption, the Town Board of Commissioners will adopt the plan in its entirety.

Please contact me with any questions.

Sincerely,

David M. Harvell, ICMA
Town Manager
910-326-4428
910-326-3101 fax
dharell@ci.swansboro.nc.us