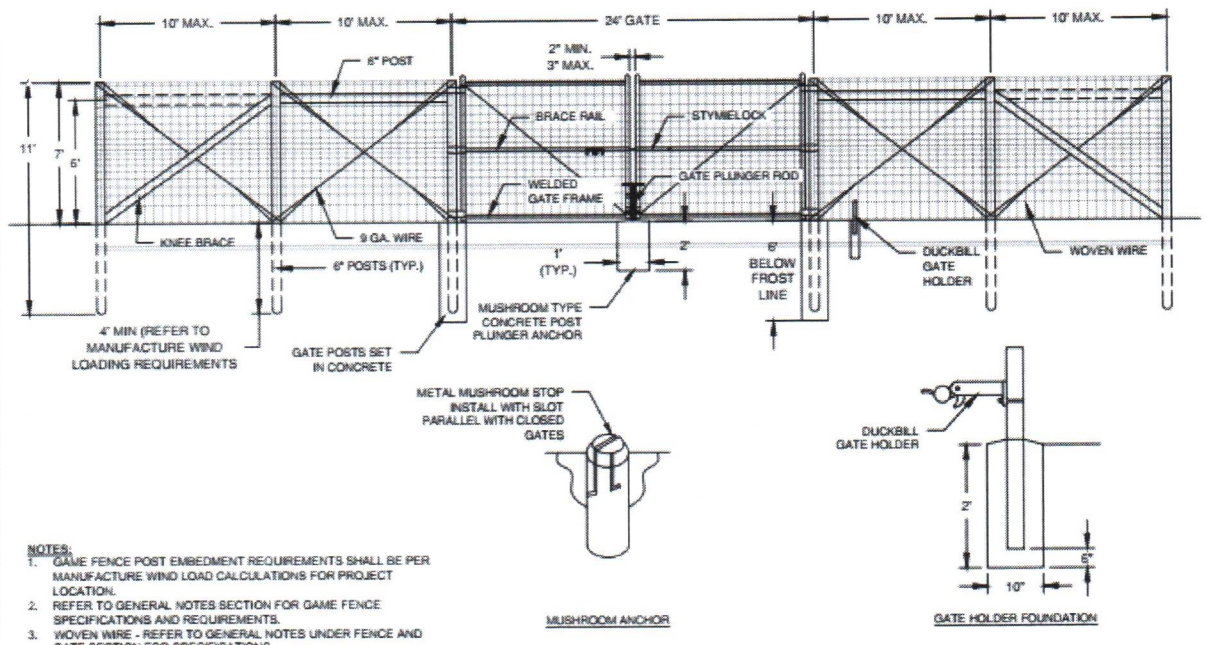


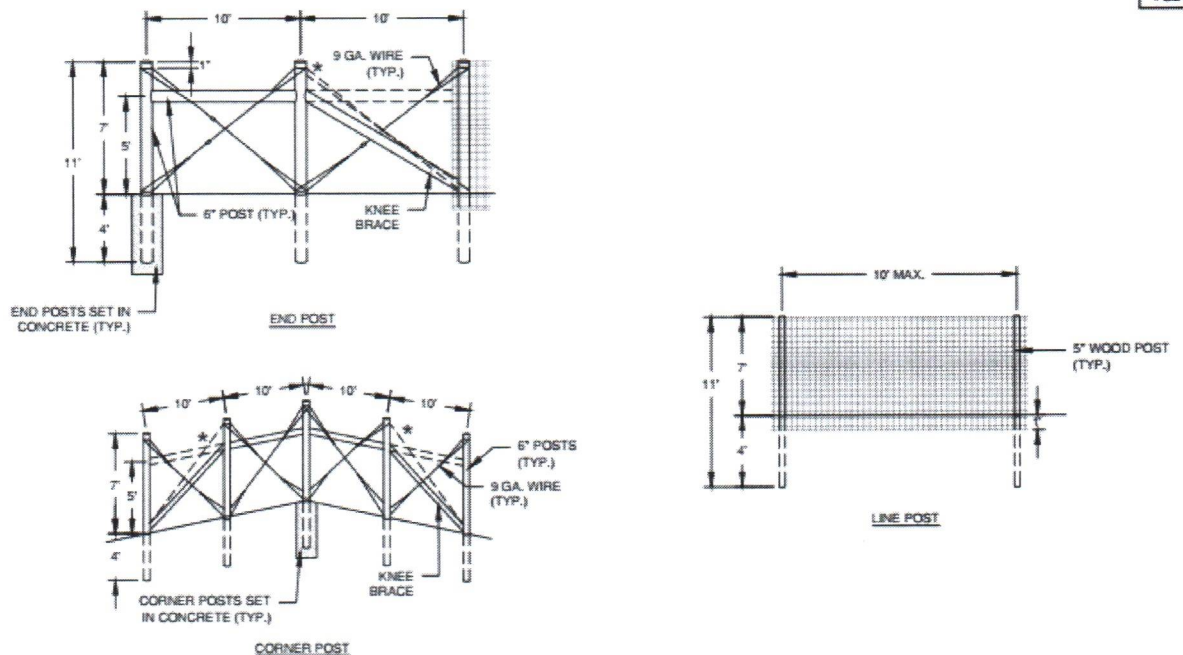
DETAIL #  
FGD-622



- NOTES:**
1. GAME FENCE POST EMBEDMENT REQUIREMENTS SHALL BE PER MANUFACTURE WIND LOAD CALCULATIONS FOR PROJECT LOCATION.
  2. REFER TO GENERAL NOTES SECTION FOR GAME FENCE SPECIFICATIONS AND REQUIREMENTS.
  3. WOVEN WIRE - REFER TO GENERAL NOTES UNDER FENCE AND GATE SECTION FOR SPECIFICATIONS.

**TYPICAL GAME WIRE FENCING, TERMINATION AND GATE INSTALLATION DETAIL (DOUBLE SWING GATE)**

DETAIL #  
FGD-624



\* ALTERNATIVE: CONSTRUCT SAME AS THE LEFT HALF OF THE END POST BUT OMIT THE KNEE BRACE.

**TYPICAL GAME WIRE FENCING POST INSTALLATION DETAIL**