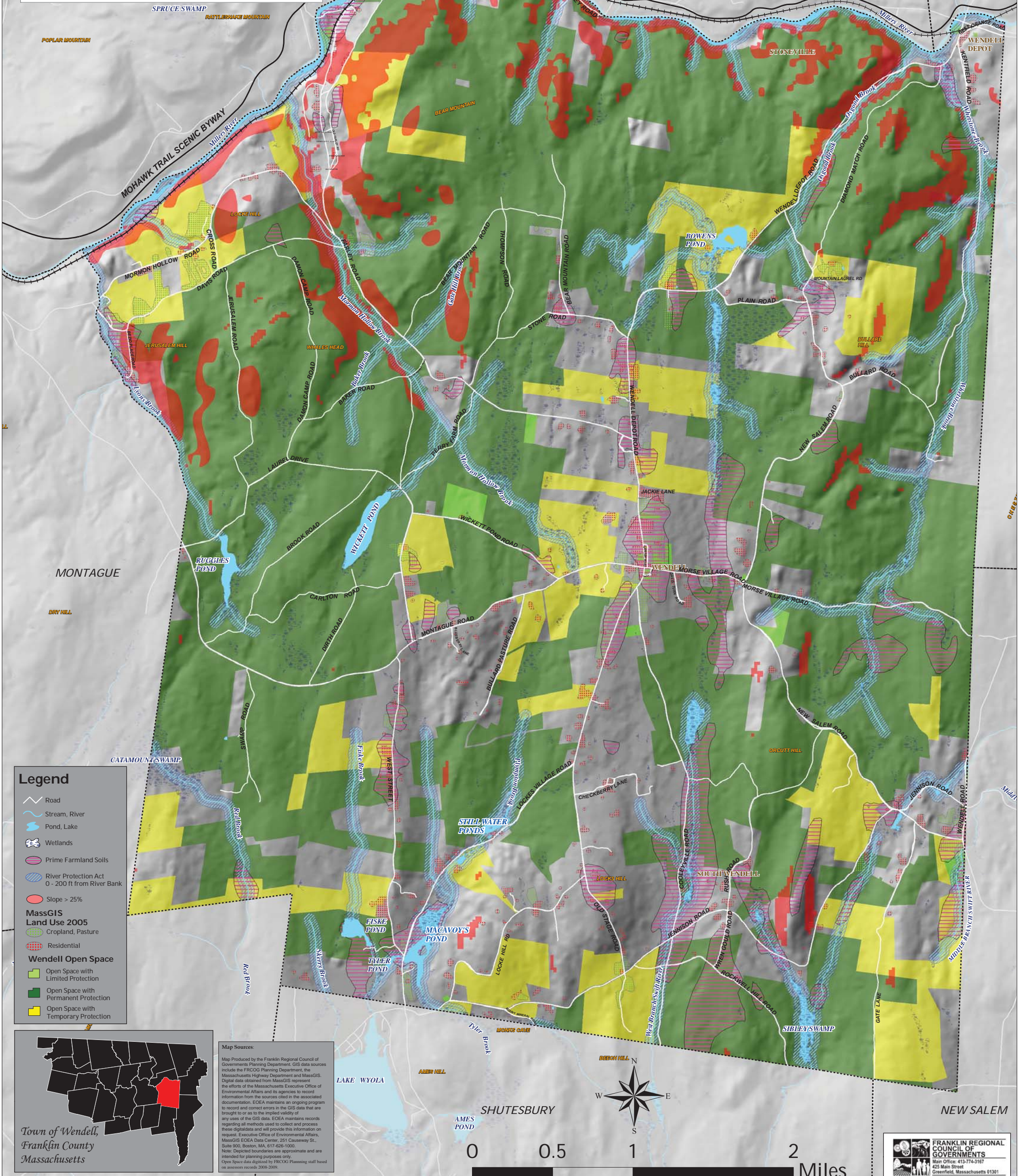


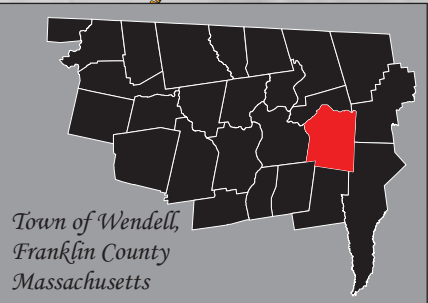
Town of Wendell Open Space & Recreation Plan

Prime Farmland & Development Constraints



Legend

- Road
- Stream, River
- Pond, Lake
- Wetlands
- Prime Farmland Soils
- River Protection Act 0-200 ft from River Bank
- Slope > 25%
- MassGIS Land Use 2005**
- Cropland, Pasture
- Residential
- Wendell Open Space**
- Open Space with Limited Protection
- Open Space with Permanent Protection
- Open Space with Temporary Protection



Map Sources:
Map Produced by the Franklin Regional Council of Governments Planning Department. GIS data sources include the FROCG Planning Department, the Massachusetts Highway Department and MassGIS. Digital data obtained from MassGIS represent the efforts of the Massachusetts Executive Office of Environmental Affairs and its agencies to record information from the sources cited in the associated documentation. EOEa maintains an ongoing program to record and correct errors in the GIS data that are brought to or as to the implied validity of any uses of the GIS data. EOEa maintains records regarding all methods used to collect and process these digital data and will provide this information on request. Executive Office of Environmental Affairs, MassGIS EOEa Data Center, 251 Causeway St., Suite 900, Boston, MA, 01742-1000.
Note: Depicted boundaries are approximate and are intended for planning purposes only.
Open Space data digitized by FROCG Planning staff based on assessment records 2008-2009.

SHUTESBURY NEW SALEM

0 0.5 1 2
Miles

FRANKLIN REGIONAL COUNCIL OF GOVERNMENTS
Main Office: 413-774-3167
425 Main Street
Greenfield, Massachusetts 01301

Map composed by Ryan Clay, FROCG Planning Dept., c:\a_projects\wend_ota_projects\wend_ota.mxd 01/11