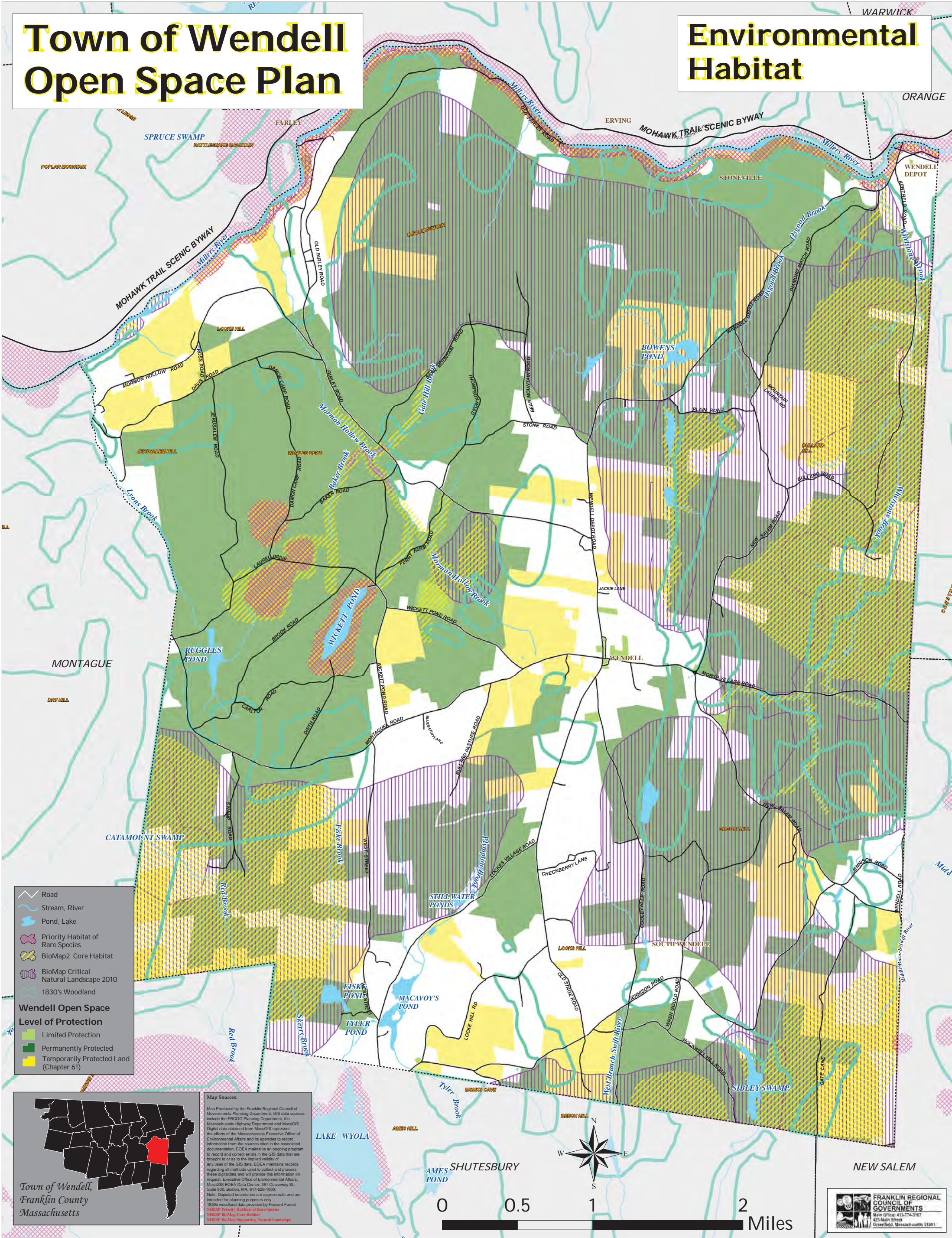
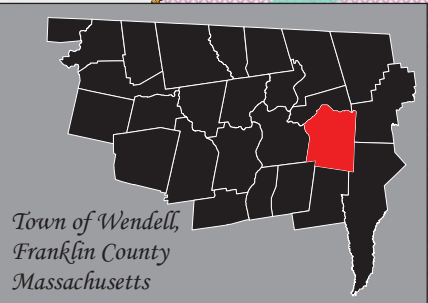


Town of Wendell Open Space Plan

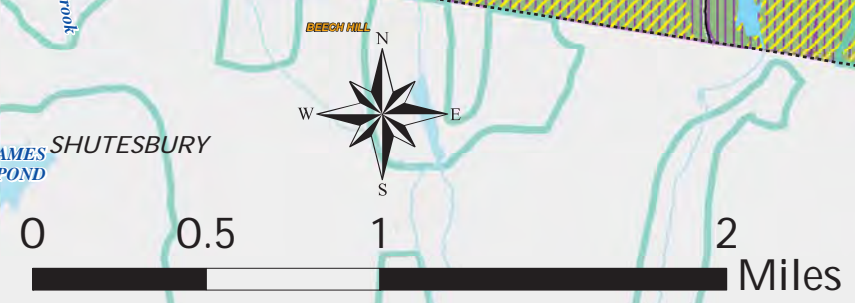
Environmental Habitat



Road
 Stream, River
 Pond, Lake
 Priority Habitat of Rare Species
 BioMap2 Core Habitat
 BioMap Critical Natural Landscape 2010
 1830's Woodland
Wendell Open Space Level of Protection
 Limited Protection
 Permanently Protected
 Temporarily Protected Land (Chapter 61)



Map Sources:
 Map Produced by the Franklin Regional Council of Governments Planning Department. GIS data sources include the FRCOG Planning Department, the Massachusetts Highway Department and MassGIS. Digital data obtained from MassGIS represent the efforts of the Massachusetts Executive Office of Environmental Affairs and its agencies to record information from the sources cited in the associated documentation. EOEA maintains an ongoing program to record and correct errors in the GIS data that are brought to or as to the implied validity of any uses of the GIS data. EOEA maintains records regarding all methods used to collect and process these digital data and will provide this information on request. Executive Office of Environmental Affairs, MassGIS EOEA Data Center, 251 Causeway St., Suite 900, Boston, MA, 617-626-1000.
 Note: Dotted boundaries are approximate and are intended for planning purposes only.
 1830s woodland data provided by Harvard Forest
 NHESP Priority Habitats of Rare Species
 NHESP BioMap Core Habitat
 NHOSP BioMap Supporting Natural Landscape



FRANKLIN REGIONAL COUNCIL OF GOVERNMENTS
 Main Office: 413-774-3167
 425 Main Street
 Greenfield, Massachusetts 01301