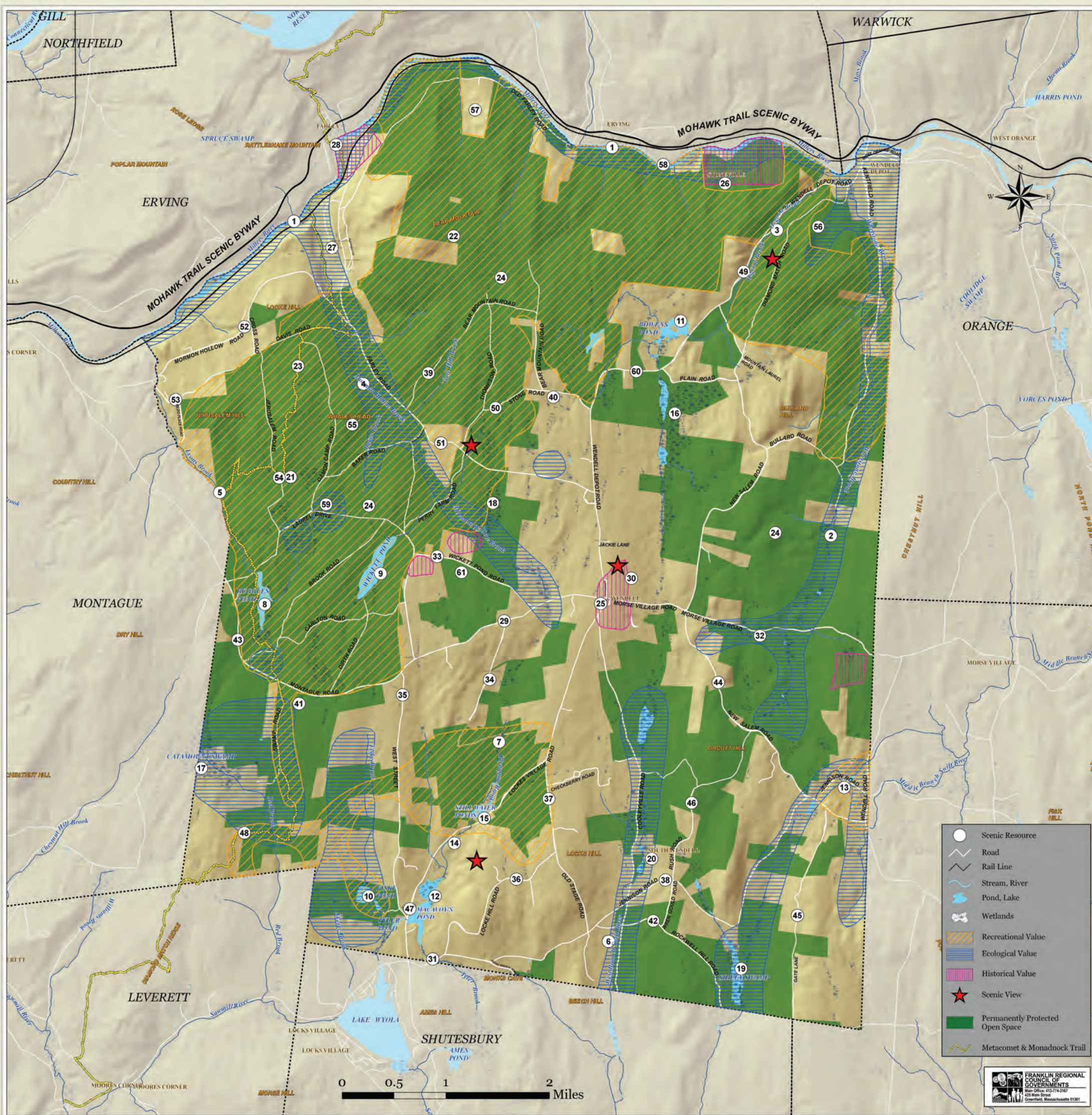


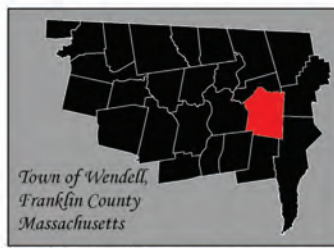
Town of Wendell Open Space Plan

Scenic Resources



Map #	Scenic Resource
Stream Corridors	
1	Millers River
2	Whetstone Brook
3	Osgood Brook
4	Mormon Hollow Brook
5	Lyons Brook and Scenic Falls (unprotected)
6	West Branch of the Swift River
7	Plympton Brook
Ponds	
8	Ruggles Pond
9	Wickett Pond
10	Fiske Pond
11	Bowens Pond
12	MacAvoy's Pond
13	Porter's Pond (a.k.a. Twin Ponds)
14	Zak's Pond
15	Stillwater Ponds
Swamps	
16	Plain Road Swamp
17	Catamount Swamp
18	Farley Road Swamp east of Perry Farm Road
19	Sibley Swamp
20	Swamps along West Branch of the Swift east of Cooleyville Road
21	Wetlands within Wendell State Forest
Recreational Resources	
22	Bear Mountain
23	Metacomet-Monadnock (M&M Trail)
24	Wendell State Forest
Cultural Areas	
25	Wendell Town Common with Northeast Long Range View
26	Old Stoneville
27	Mormon Hollow Historic Area
28	Farley Bridge and Views of Millers River
29	Town Pound on Montague Road opposite the intersection with Ballard Pasture Road
30	Wendell Center Cemetery
31	Locke's Village Cemetery
32	Small Fox Cemetery
Scenic Roads	
33	Wickett Pond Road
34	Ballard Pasture Road
35	West Street
36	Locke Hill Road
37	Cooleyville Road
38	Jennison Road
39	Bear Min. Road
40	Woods roads off Stone Road and Depot Road
41	Hemmiway Road
42	Rockwell Hill Road
43	Montague Road
44	New Salem Road
45	Gate Lane
46	Rush Road
47	Lockes Village Road/Scenic View of McAvoy's Pond
48	Old Egypt Road
49	Wendell Depot Road/Long Range View at Common
50	Stone Road
51	Farley Road/Long Range View
52	Mormon Hollow Road/Long Range View westward
53	Davis Road/ Long Range View westward
Unusual Geological Features	
54	Jerusalem Road Ledge (also has a Scenic Long-range View)
55	Whales Head
56	Steep Hill Off Wendell Depot Road
Unusual Natural Communities	
57	High Energy Riverbank - Millers River
58	Floodplain Forest - Millers River
59	Kettlehole Level Bog - Wendell State Forest
Significant Historical Agricultural Landscapes	
60	J. C. Holston Property, Depot Road
61	J. Wyman Property, Wickett Pond Road

Scenic Resource
 Road
 Rail Line
 Stream, River
 Pond, Lake
 Wetlands
 Recreational Value
 Ecological Value
 Historical Value
 Scenic View
 Permanently Protected Open Space
 Metacomet & Monadnock Trail



Map Source:
 Map Produced by the Franklin Regional Council of Governments Planning Department. GIS data sources include the FRCOG Planning Department and Massachusetts Highway Department and MassDOT. Digital data obtained from MassDOT represent the efforts of the Massachusetts Executive Office of Environmental Affairs and its agencies to record information from the accurate data to the associated documentation. ESEA members are required to record and correct errors in the GIS data that are brought to or as to the extent of the accuracy of the data. ESEA members require regularity of methods used to collect and process. Please acknowledge and use the information of the Executive Office of Environmental Affairs. MassDOT GIS Data Center: 201 Computer St., Suite 400, Boston, MA 02108-1500. Data: Copyright Reserved and appropriate and not intended for primary purpose only. © 2010 Franklin Regional Council of Governments. All Rights Reserved.



0 0.5 1 2 Miles