

French Creek Parkway Asset Management and Corridor Improvement Study

US 6 & 19, City of Meadville and West Mead Township

Public Meeting

West Mead Township Building

January 31, 2018

Project Team



PennDOT

Tom McClelland, P.E.

James Carroll

Brian McNulty, P.E.

Chris Wolfgang

Michael Baker International

Max Heckman, P.E.

Ray Maginness

Erin Bench

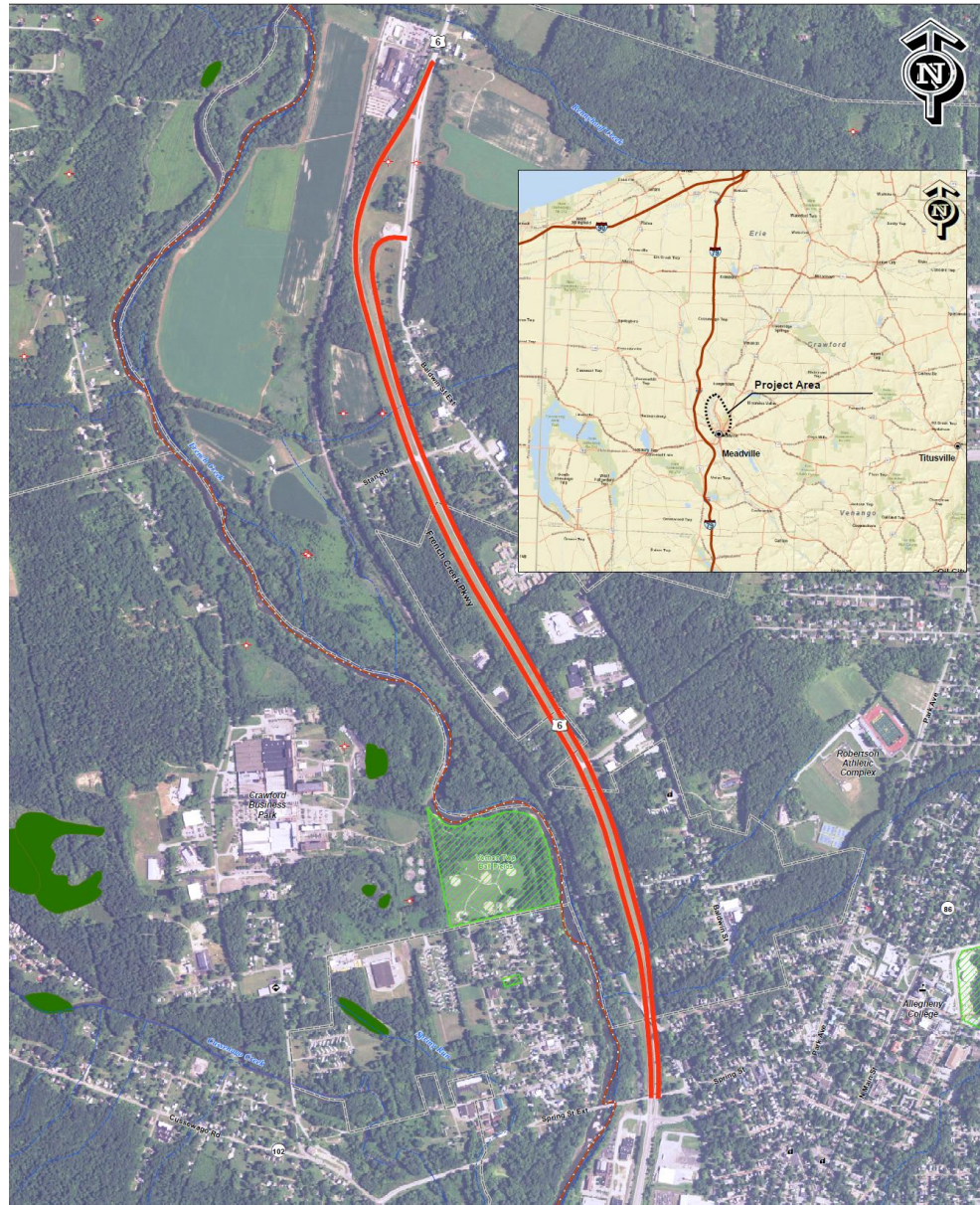
► Tonight's Agenda

- Purpose of the Study
- Existing Conditions
 - Traffic and Safety
 - Pavement
 - Bridges
- Input to Date
- Initial Study Concepts
- Future Steps
- ***Your Input / Feedback***

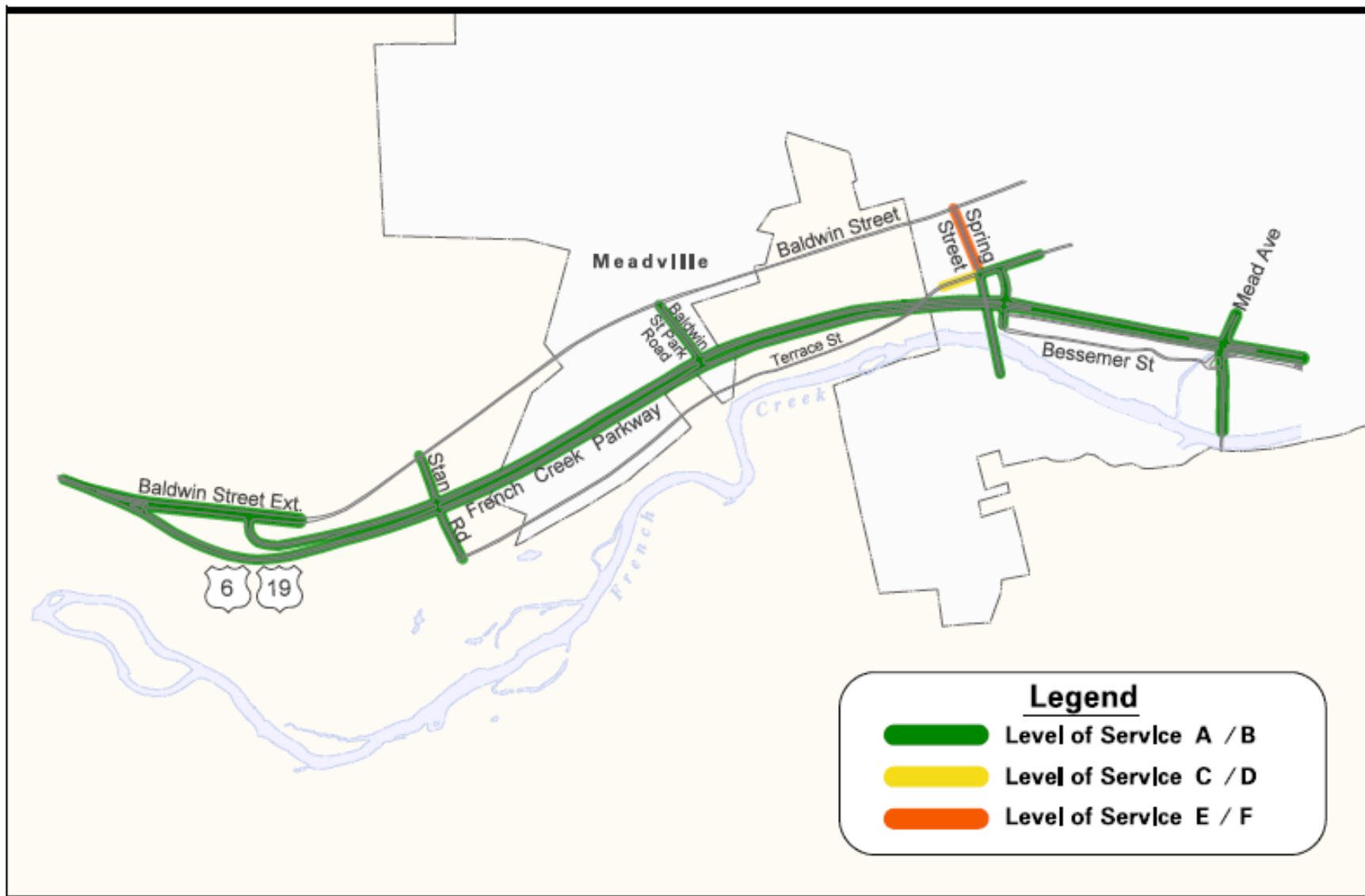
► Purpose of the Study

- Due diligence prior to making major investments
- Evaluate existing and future traffic operations
- Evaluate roadway and bridge conditions
- Identify related planning and economic development initiatives
- Determine future costs to maintain and repair the roadway
- Identify and evaluate options for changes/improvements to the roadway
- Determine possible long range strategies for the corridor
- Involve stakeholders and the public

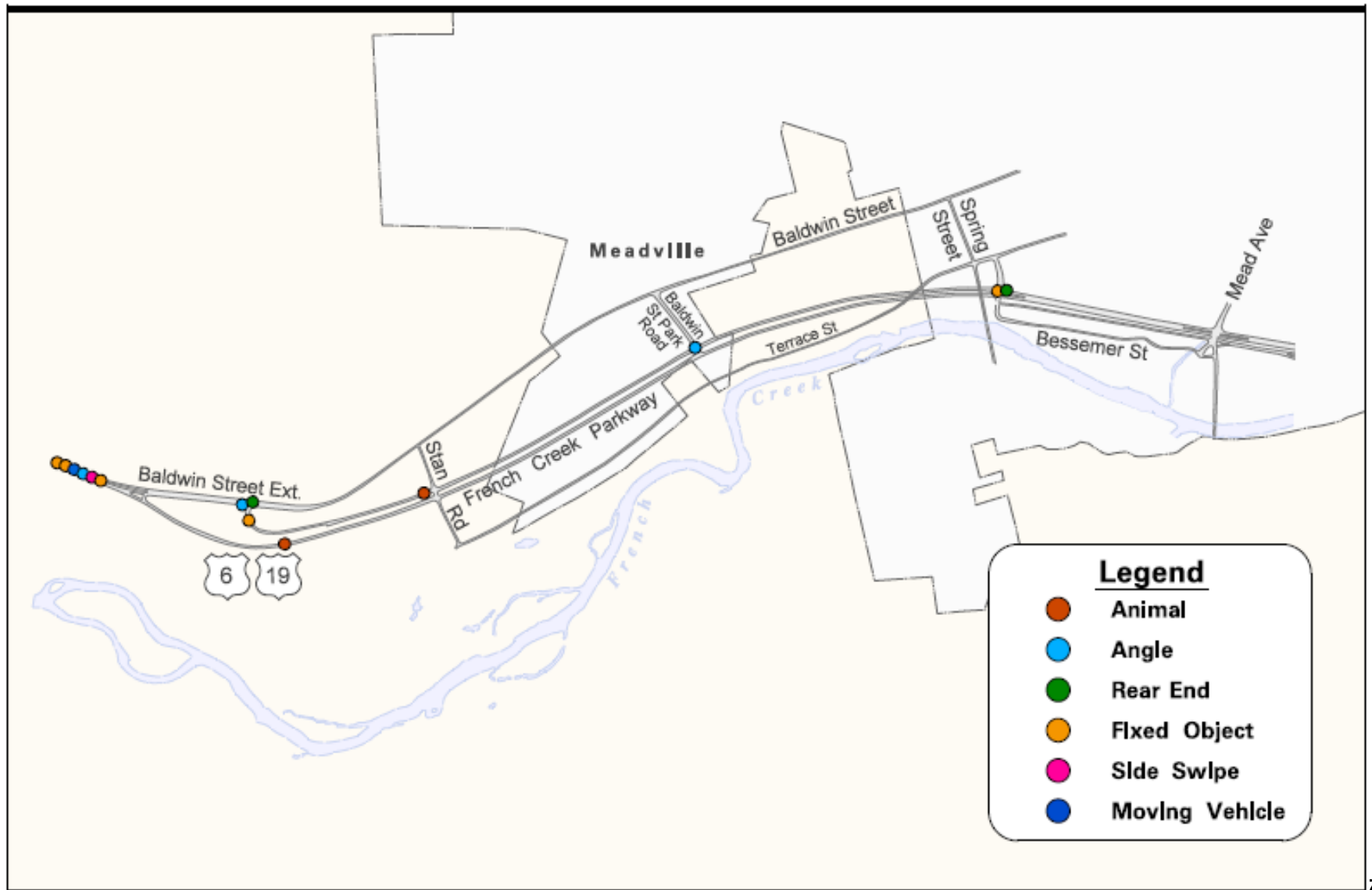
Study Area



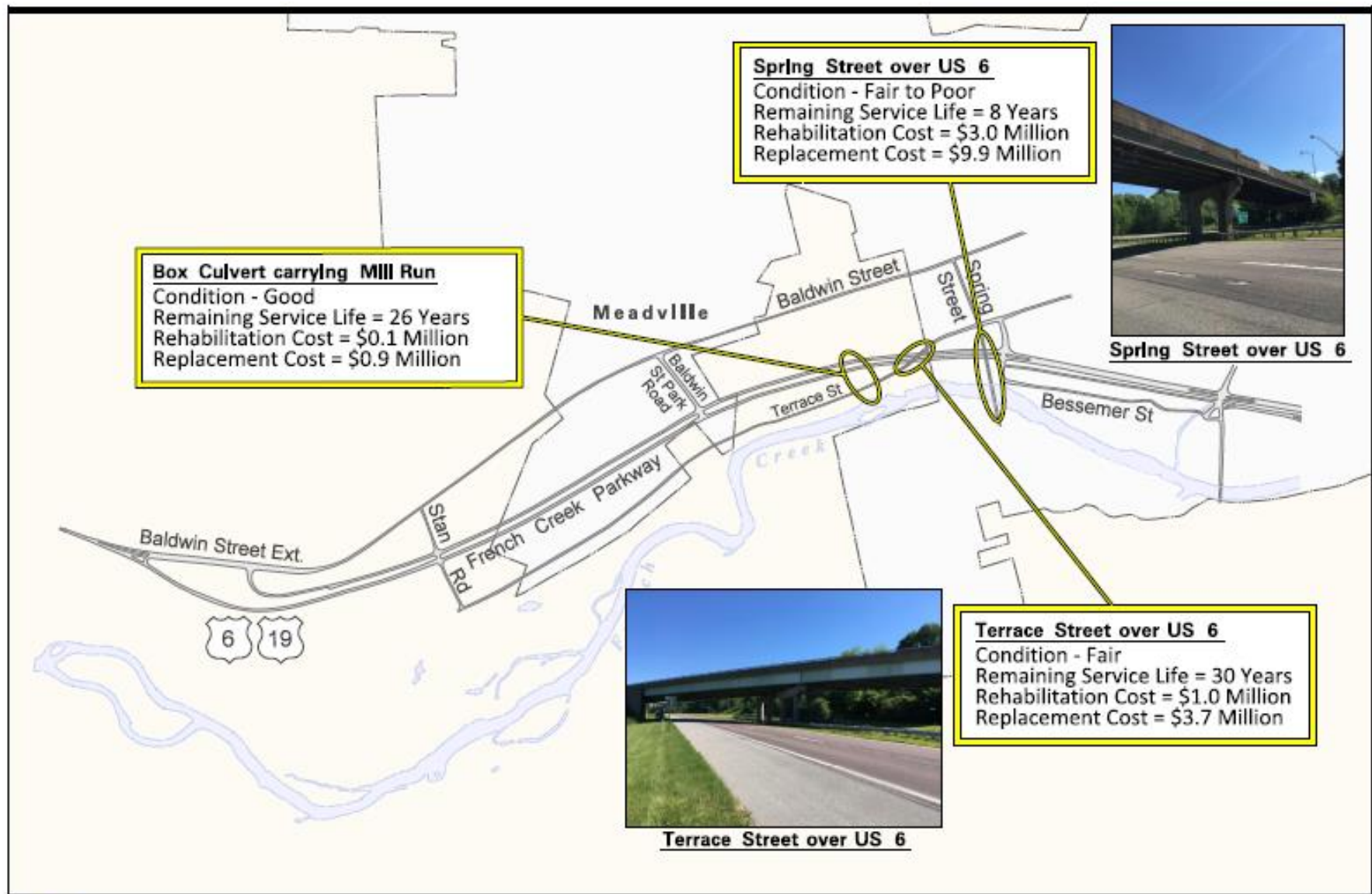
► Level of Service



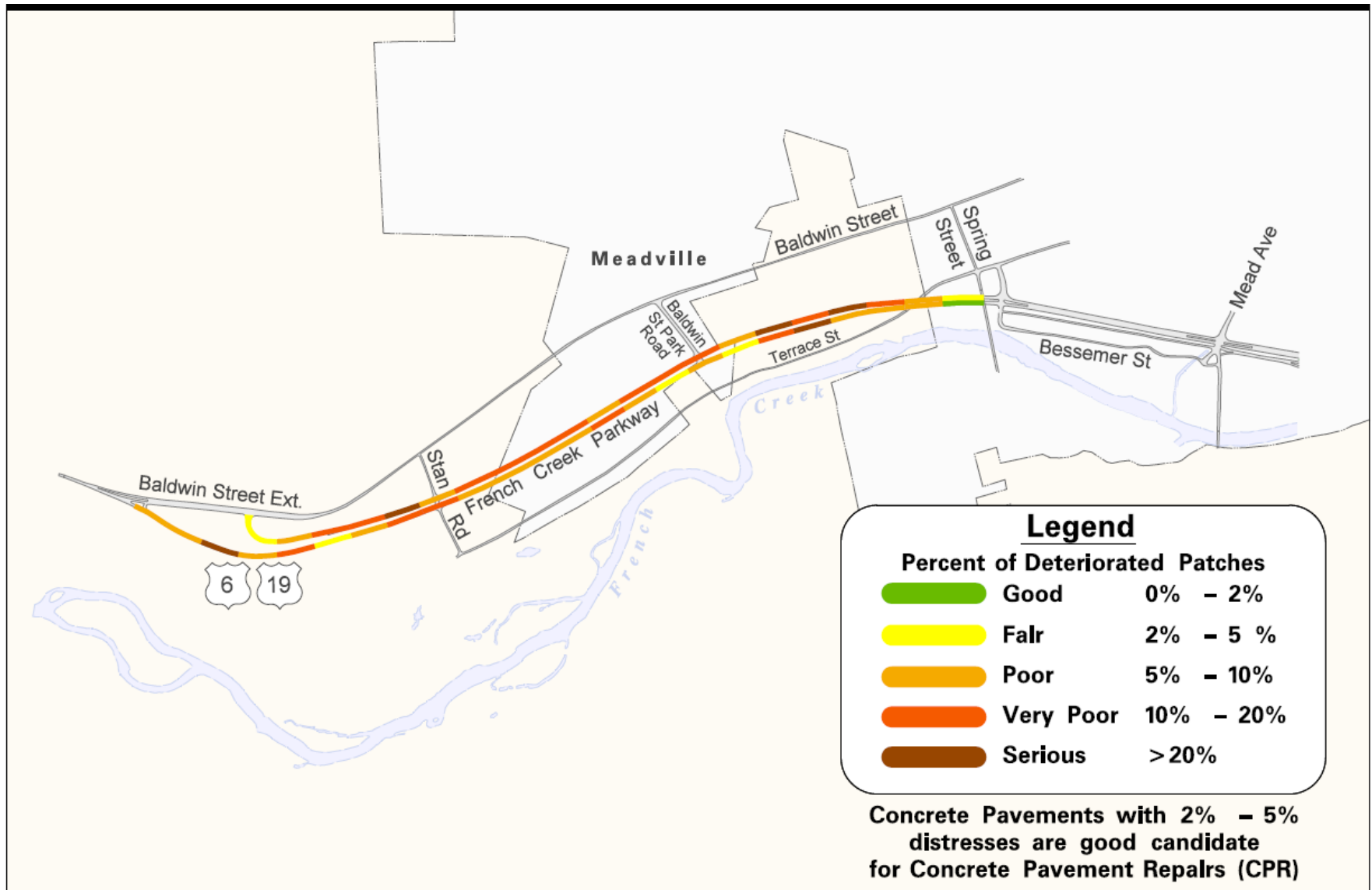
Crash Data



Existing Conditions - Bridges



Existing Conditions - Pavement



► Future Costs to Maintain

- Annual Maintenance Cost = \$95,000
- Approximate Future Reconstruction Cost
 - Roadway \$4 to \$6 million
 - Bridges \$10 to \$13 million
 - Engineering and Other items \$2 to \$3 million
 - **Total** **\$16 to \$22 million**

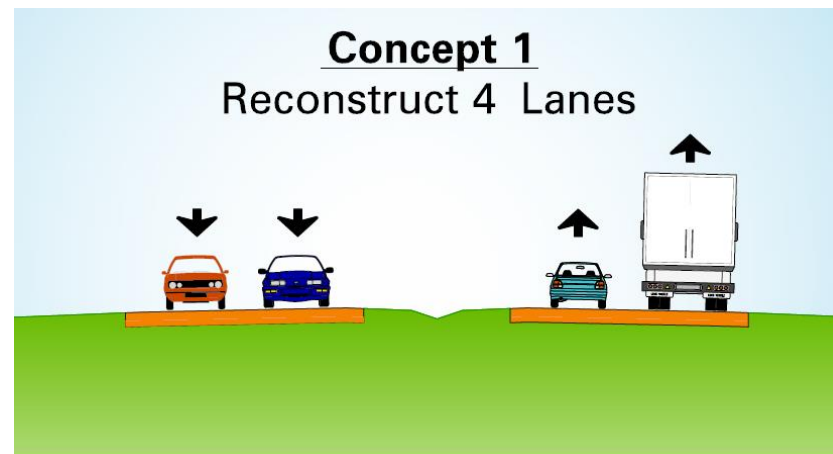
➤ Input to Date

- Phone interviews and meetings with:
 - Local Officials
 - County Planning Staff
 - Local Businesses
 - Chamber of Commerce
 - Economic Development Agencies
- Initial Impressions
 - The roadway is a valuable by-pass of Baldwin Street
 - It operates very well in its current configuration
 - It's in fair condition, could use some repair
 - It does create a barrier between the city and French Creek, modification to address this could be considered

➤ Concept 1 – Reconstruct 4 Lanes



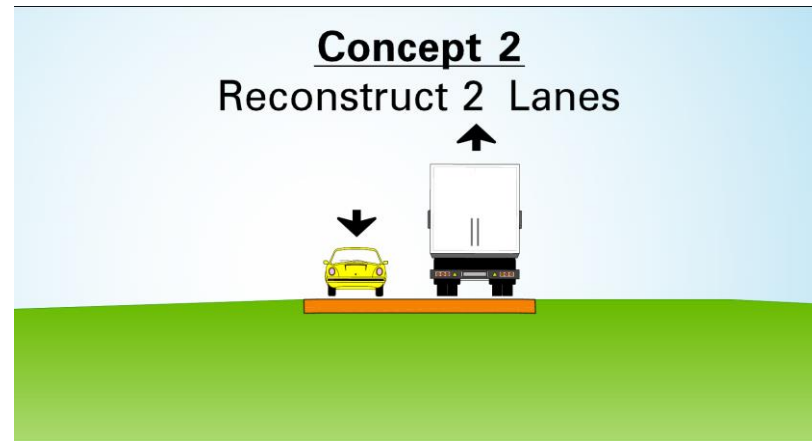
- Maintains current configuration
- High level of traffic service
- Limits access to adjacent property and French Creek



➤ Concept 2 – Reconstruct 2 Lanes



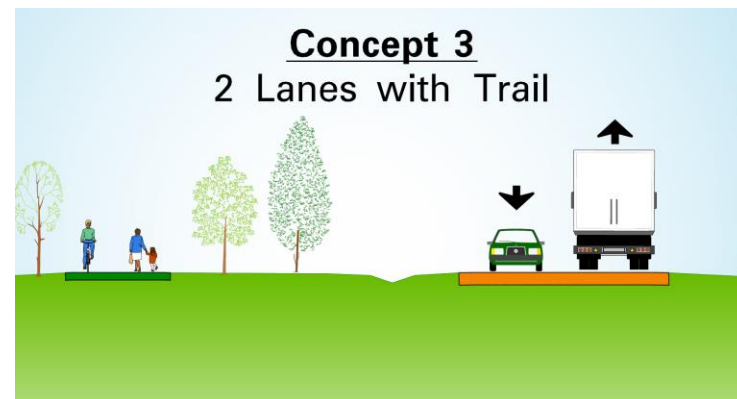
- Reduces reconstruction and future maintenance costs
- Future level of service still acceptable
- Could open access to adjacent property and French Creek



► Concept 3 – 2 Lanes with Trail



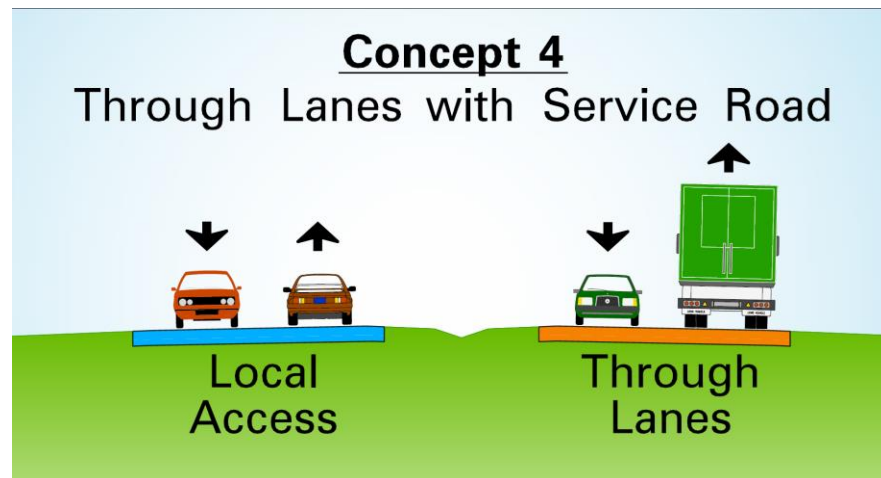
- Reduces reconstruction and future maintenance costs
- Future level of service still acceptable
- Improves bicycle pedestrian safety and mobility in the corridor
- Reduces “barrier” effect between the City and French Creek
- Local matching funds required



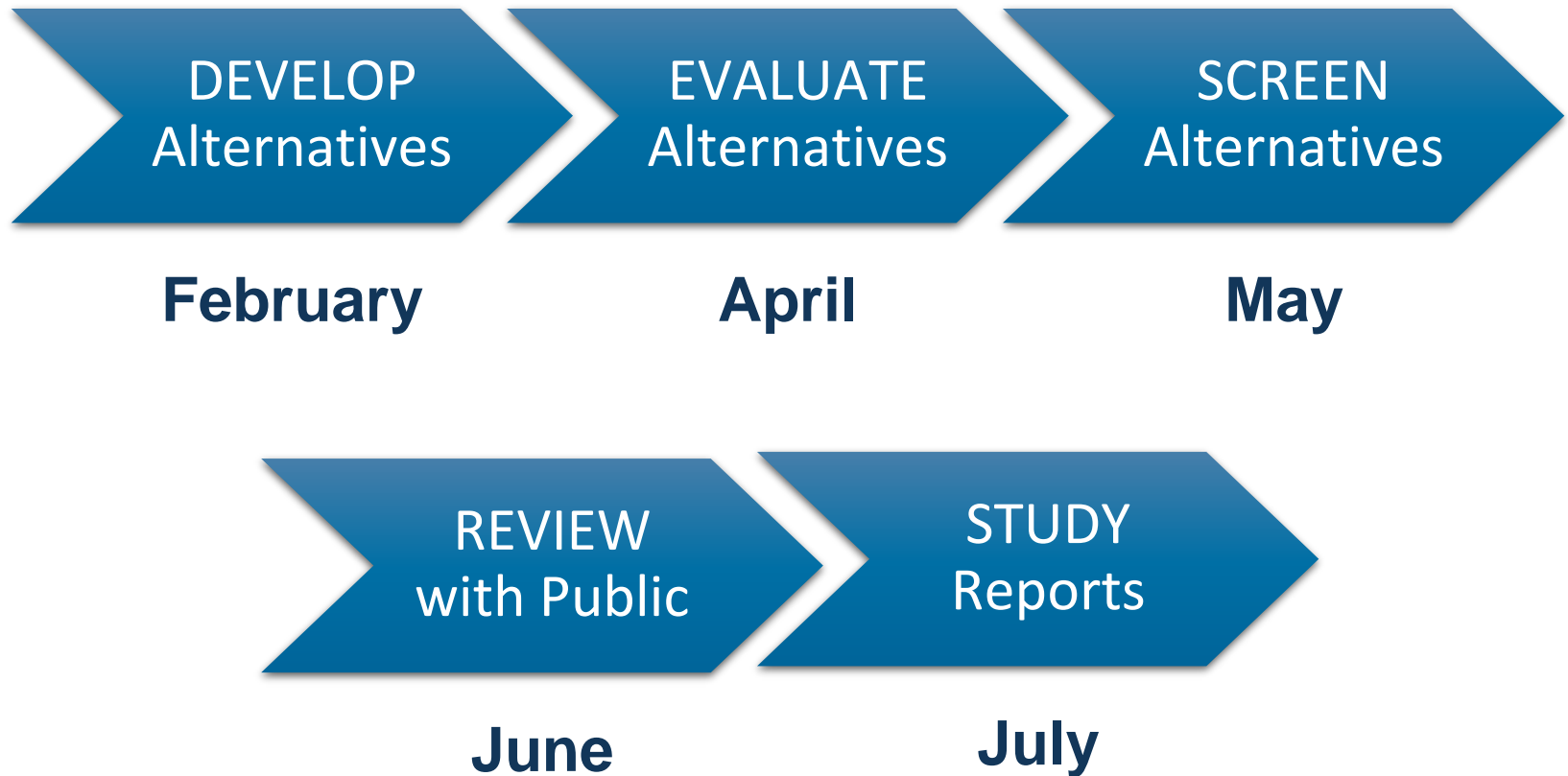
► Concept 4 – Through Lanes with Service Rd



- Increased reconstruction cost
- Reduced access control could increase congestion
- Could facilitate development along Baldwin Street and / or French Creek



Next Steps



► Project Input / Feedback

- Questions and Answers tonight
- Display boards are exhibited around the room for one on one conversation
- Comment Forms (located on sign-in table) may be filled out this evening or mailed / emailed at a later date

Thoughts?
Questions?