



January - February

City News

City Manager News

What is the role of the Planning Commission and the Planning Commissioner? To respond to these questions, we defer to the Oregon Planning Commissioner Handbook which was created by the collaborative efforts of the Department of Land Conservation and Development (DLCD), the Oregon Chapter of the American Planning Association, and the American Planning Training Team.

"It is the responsibility of planning commissioners, planning staff, and elected officials to: Protect the public health, safety, and welfare. Arising from U.S. and Oregon Constitutions, this is the reason for local government and the authority to conduct planning activities is provided to achieve these basic goals."

The responsibility of a Planning Commission is governed by State Statutes, Municipal Charters, and Ordinances. A Planning Commissioner's role is to develop, maintain, and implement the comprehensive plan, to protect the integrity of our community's planning process, and to foster the community's long term interests. Holding close the understanding that land use planning is always evolving and ongoing, understanding the interrelationships between the City Council, Planning Commission, and the Community while reflecting the values of the Community is essential.

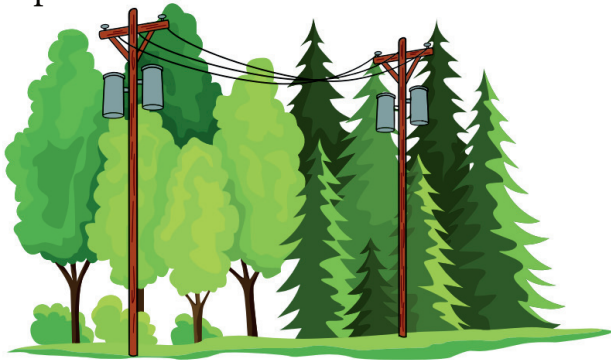
Planning itself is about making decisions on land use applications. The applications vary from fence permits to remodeling your home or business and are sometimes as comprehensive as working through the approval of a new subdivision. The Planning Commission objectively reviews applications to make effective and responsible decisions while being mindful of the impact to others to avoid specific hazards and liabilities. As with a majority of municipalities, there are fees associated with each type of land use application; Willamina's development code requires that planning "pay for itself."

The Planning Commission currently has one vacancy. If you are enthusiastic about identifying and seizing opportunities, working together to continue growing a sense of community, are courageous to ask the difficult questions to ensure that the public's health, safety, and welfare are protected in land use decisions please consider applying. You must have resided within the City limits for a minimum of the previous twelve months and have a general knowledge of the City and the services it provides. Submit applications by email to ctalley@ci.willamina.or.us or drop off at City Hall. Applications can be found at willaminaoregon.gov. Call (503) 876-2242 if you have questions.

"For every minute spent in organizing, an hour is earned." – Benjamin Franklin

PGE Tree Maintenance

Some neighborhoods may have noticed PGE has been pruning plants and trees around their lines, poles, and equipment. This is part of their regular maintenance program and you can find out more about it at portlandgeneral.com/trees. If you have questions please call 503-736-5460.



PLANNING COMMISSION VACANCY

- Do you have a passion for your community?
- Are you enthusiastic to identify and seize opportunities?
- Do you have the courage to ask difficult questions to ensure public health, safety, and welfare?
- Do you live within City Limits?



Go to willaminaoregon.gov/planning-commission or call (503) 876-2242 for more information

City Council

Regular City Council Meetings are scheduled the second Tuesday 6:00 PM:

February 13, 2024
March 12, 2024

Public Input: Presentations not scheduled on the Agenda are limited to three (3) minutes. Longer presentations should be submitted to the City Recorder prior to the meeting.

Meetings are held hybrid:

In person at the West Valley Fire Station, 825 NE Main Street, Willamina

via Zoom: a link is posted to the website prior to the Meeting at <https://www.willaminaoregon.gov/departments/public-meetings/>

Hours:
Monday through Thursday
11 AM - 5 PM

Library Director:
Sarah Frost,
frosts@ci.willamina.or.us



www.willaminaoregon.gov/library
FB @WillaminaOregonPublicLibrary
Instagram @willaminapubliclibrary
Discord @willaminapubliclibrary
X @WillaminaPubLib

FEBRUARY Programs, Events, and Meetings

- 6th 6:30 PM: Friends Board Meeting
- 7th 4:30 PM: Book Club for Adults: The Lost Library
- 10th 11 AM: Dice Mini-Game and Mini-Painting Workshop
- 12th 2-5 PM: West Valley Fiber Enthusiasts
- 15th: Library will close at 3 PM for a Library Staff Meeting
- 17th: Saturday Programs
- 11 AM - Youth Programming Committee:
Interested volunteers welcome to attend
- 12 PM - Minecraft Club
- 1-3 PM - Tantalus Troupe
- 17th 6 PM: Wet Season Music Series
@WVCC supporting the Willamina Public Library
Music: Joanne Broh Band - A dynamic blend of smokin' blues and R&B with a splash of funk, Joanne Broh will get you dancing and wanting more!
- 19th: CLOSED - holiday
- 20th 6 PM: Library Board Meeting
- 24th 12-3 PM: Fae Day Carnival
- March 2nd 11 AM: Fairy Terrain & Mini-Painting Workshop
contact: Sarah Frost, frosts@ci.willamina.or.us

CALENDAR:

Check our website regularly for meeting changes and important notices

- February 13 6pm City Council Regular Meeting
- February 20 6pm Willamina Library Board Meeting
- February 27 6pm Planning Commission Meeting
- Wednesdays 8am Chamber of Commerce Meetings
- Wednesdays 4pm Civic Club Food Pantry Distribution
- Saturdays 1pm Willamina's Museum of History open

IMPORTANT DATES: FEBRUARY 19 - CITY CLOSED - HOLIDAY

West Valley Fiber Enthusiasts



now at the
Willamina Public Library
2nd Monday Monthly
2PM-5PM

Our open-format welcomes all ages interested in the fiber arts: spinning, knitting, crochet, weaving, sewing, embroidery, tatting, felting...
Beginners to Experts



South Yamhill River Astronomy Club
There will be no February meeting.
Join us in supporting the Willamina Public Library at the Wet Season Music Series at the West Valley Community Campus
Saturday, February 17, 7 PM



Scan the NEW/UPDATED QR code to sign up for our Newsletter

New Moon: February 9
Full Moon: February 24

a Willamina Public Library club

FREE FOR EVERYONE