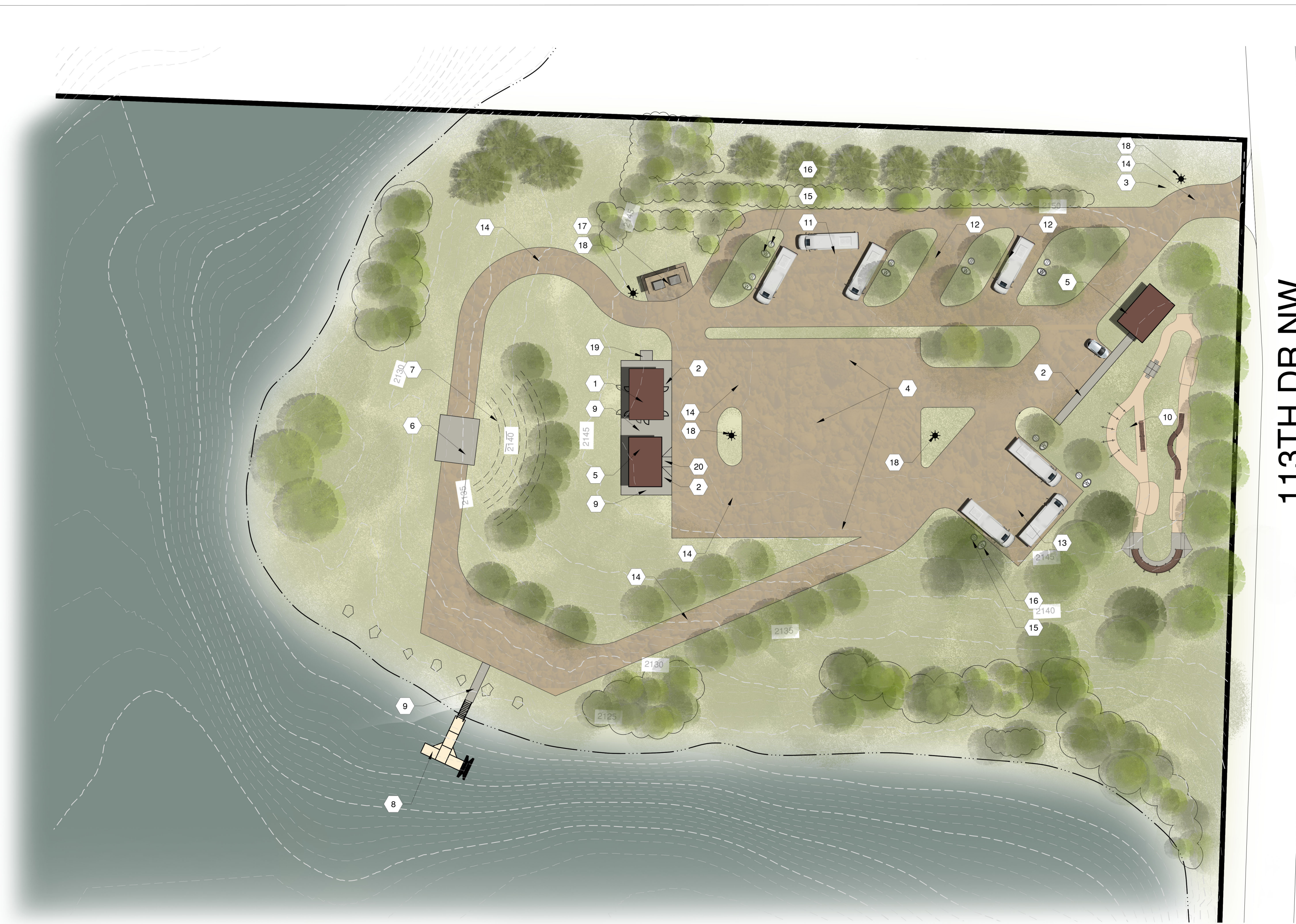


REVISIONS		
NO.	BY	DATE

LAYOUT PLAN KEYNOTES

- 1 NORTH RESTROOM BUILDING
- 2 4" CONCRETE SIDEWALK W/ THICKENED EDGE
- 3 KIOSK AND PAY STATION
- 4 6" DEPTH CL. 13 AGGREGATE SURFACED PARKING LOT
- 5 20' X 30' TIMBER PARK SHELTER
- 6 6" REINFORCED CONCRETE STAGE PAD
- 7 LAWN CHAIR AMPHITHEATER AREA - SEE GRADING PLAN
- 8 FISHING DOCK AND CANOE/KAYAK LAUNCH LOCATION
- 9 4" CONCRETE SIDEWALK
- 10 BICYCLE PLAYGROUND
- 11 PULL THROUGH 60' x 40' GROUP CAMPSITE
- 12 PULL THROUGH 20' x 40' RV SITE
- 13 60' x 60' GROUP CAMPSITE
- 14 6" DEPTH OF CL. 13 GRAVEL SURFACING
- 15 RV ELECTRICAL PANEL
- 16 CAMPSITE WATER HOOKUP
- 17 6 YD DUMPSTERS WITH 6' SCREEN FENCE
- * 18 LIGHT POLE, SEE ELEC. (QTY. 4 THIS SHEET ONLY)
- 19 CONCRETE RAMP APRON TO OVERHEAD DOOR
- 20 ACCESSIBLE RAMP AND DETECTABLE WARNING PANELS



113TH DR NW

VERIFY SCALE WHEN PRINTING 1/2 SIZE
 CONSTRUCTION DOCUMENTS
 1 SITE LAYOUT PLAN - DAY USE PARK AREA

ORIGINAL SCALE: 1"=40'
 0' 20' 40' 80'

ONE CALL
 BEFORE DIGGING
 1-800-795-0555
 CONTRACTOR TO LOCATE UTILITIES
 PRIOR TO CONSTRUCTION

KOTA RAY DAM - PARK IMPROVEMENT PROJECT
 WILLIAMS COUNTY PARKS
 WILLIAMS COUNTY, NORTH DAKOTA

DATE: 04-03-24
 AGL PROJECT NO: 0511223
 PHASE
 CONSTRUCTION DOCUMENTS

PREFERRED SITE LAYOUT PLAN

L3-1