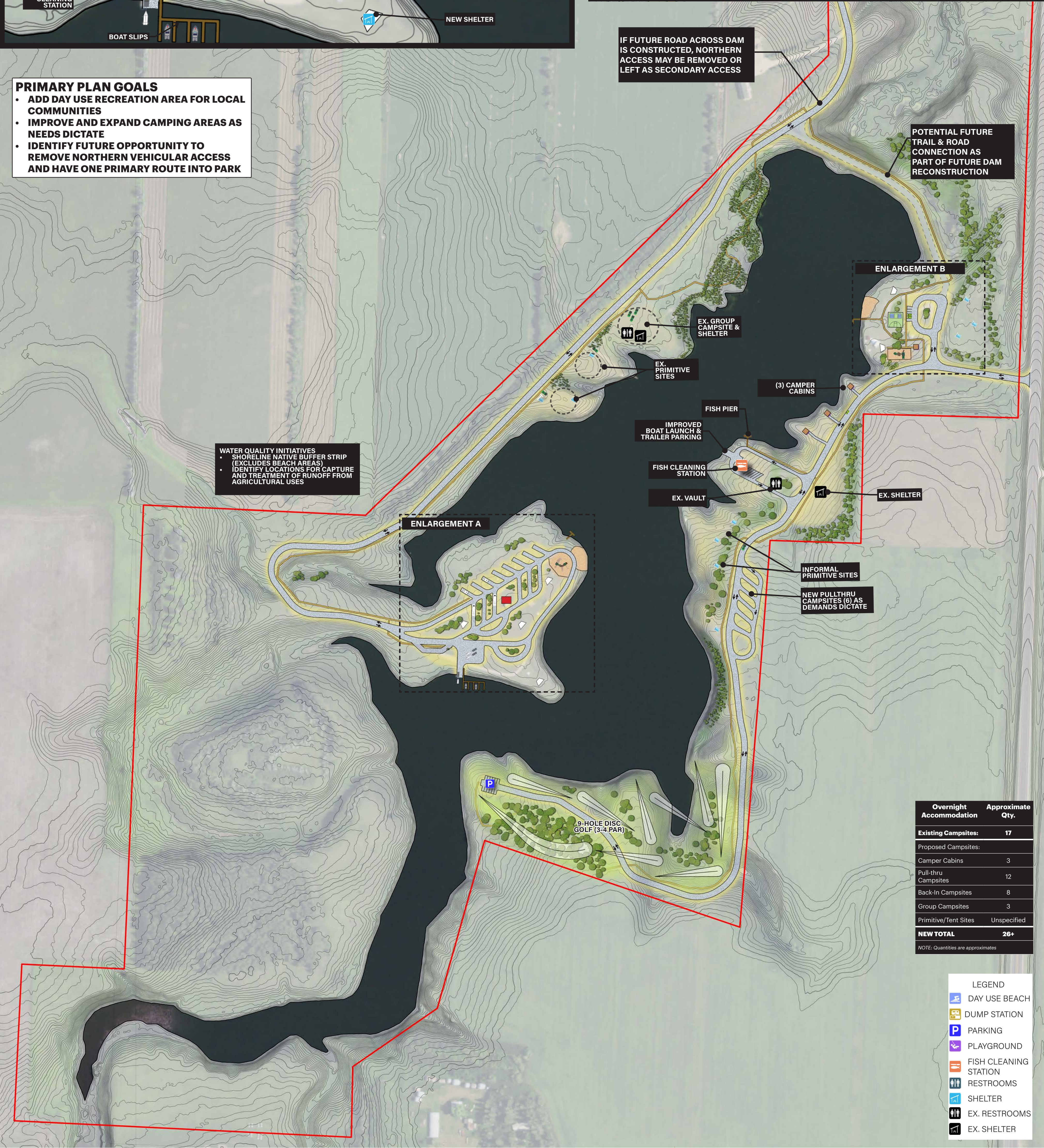


- PRIMARY PLAN GOALS**
- ADD DAY USE RECREATION AREA FOR LOCAL COMMUNITIES
  - IMPROVE AND EXPAND CAMPING AREAS AS NEEDS DICTATE
  - IDENTIFY FUTURE OPPORTUNITY TO REMOVE NORTHERN VEHICULAR ACCESS AND HAVE ONE PRIMARY ROUTE INTO PARK

- WATER QUALITY INITIATIVES**
- SHORELINE NATIVE BUFFER STRIP (EXCLUDES BEACH AREAS)
  - IDENTIFY LOCATIONS FOR CAPTURE AND TREATMENT OF RUNOFF FROM AGRICULTURAL USES

IF FUTURE ROAD ACROSS DAM IS CONSTRUCTED, NORTHERN ACCESS MAY BE REMOVED OR LEFT AS SECONDARY ACCESS

POTENTIAL FUTURE TRAIL & ROAD CONNECTION AS PART OF FUTURE DAM RECONSTRUCTION



Overnight Accommodation	Approximate Qty.
Existing Campsites:	17
Proposed Campsites:	
Camper Cabins	3
Pull-thru Campsites	12
Back-In Campsites	8
Group Campsites	3
Primitive/Tent Sites	Unspecified
<b>NEW TOTAL</b>	<b>26+</b>

NOTE: Quantities are approximate

- LEGEND**
- DAY USE BEACH
  - DUMP STATION
  - PARKING
  - PLAYGROUND
  - FISH CLEANING STATION
  - RESTROOMS
  - SHELTER
  - EX. RESTROOMS
  - EX. SHELTER