



# MATCH NOTES

## MATCH SIXTEEN

### Columbus Fury (5-10) vs. Vegas Thrill (5-12)



Wednesday | April 17 | 10 p.m. ET

YouTube

Lee's Family Forum • Henderson, Nev.

<b>Columbus Head Coach</b> .....Ángel Pérez	<b>Vegas Head Coach</b> .....Fran Flory
<b>Fury Record (1st season)</b> ..... 5-10 (.333)	<b>Thrill Record (1st season)</b> ..... 5-12 (.294)
<b>Career Record (4th season)</b> ..... 5-10 (.333)	<b>Career Record (36th Season)</b> ...520-425 (.550)

**SERIES NOTES:** This will be the fourth and final meeting between the Fury and the Thrill this season. Columbus holds a 2-1 advantage in the series, 1-0 in Vegas and 1-1 at home.

### BROADCAST INFORMATION

	Today's match will stream on Pro Volleyball Federation's YouTube channel: <i>Play-by-Play: A.J. Kannell, Analyst: Victoria Dennis</i>
--	--

### UNLEASH THE FURY

The Columbus Fury are one of seven teams taking the court in the inaugural season of Pro Volleyball Federation.

- ⇒ The Fury boast a roster that features a combined 64-years of professional experience.
- ⇒ The two newest additions to the team, Michelle Bartsch-Hackley and Nikoleta Perović have over 10 years of professional experience. Two players, Megan Courtney Lush and Raymariely Santos have seven-plus years of experience playing internationally.
- ⇒ Columbus' roster features two Ohio State alums, Valeria León, and Jenaisya Moore, who will once again be playing volleyball in the Buckeye State. The team also features Buckeyes assistant coach, Michelle Bartsch-Hackley who joined the coaching staff in March of 2023.
- ⇒ The Fury join the Columbus Blue Jackets (NHL) and the Columbus Crew (MLS) as the major league teams representing the city.
- ⇒ The team hosted their home opener on Feb. 21 in front of a crowd of 9,165 at Nationwide Arena.
- ⇒ After an 0-2 start, the team won their next three matches behind the strong play of rookie Reagan Cooper. Cooper earned the Pro Volleyball Federation Player of the Week on 2/27 after totaling 66 points, 58 kills and 33 digs over three matches.
- ⇒ The Fury have been active in player transactions in the last week adding three new players to the roster: Tori Stringer, Michelle Bartsch-Hackley, and Nikoleta Perović.
- ⇒ Columbus secured their second Pro Volleyball Federation Player of the Week award on March 26 after Asjia O'Neal totaled 30 kills, two blocks and two aces



### COLUMBUS FURY COMMUNICATIONS

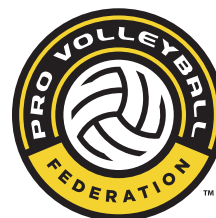
**CASSIE KELLEY**  
**Director of Communications**  
 ckelly@columbusfury.com  
 304.208.3026

@Cass\_Boss\_

### 2024 SCHEDULE

Date	Opponent	Time/Result
01.25	at Grand Rapids	L 3-0
02.16	at Orlando	L 3-1
02.21	Omaha	W 3-1
02.24	at Vegas	W 3-0
02.26	Vegas	W 3-1
03.03	at Orlando	W 3-2
03.09	at Grand Rapids	L 3-1
03.11	Vegas	L 3-1
03.20	Grand Rapids	L 3-1
03.24	Atlanta	W 3-1
03.27	at Atlanta	L 3-0
03.29	Orlando	L 3-0
04.04	at Omaha	L 3-1
04.07	at San Diego	L 3-1
04.12	San Diego	L 3-2
04.17	at Vegas	10 p.m.
04.19	Atlanta	7 p.m.
04.26	Orlando	7 p.m.
04.28	Grand Rapids	2 p.m.
05.02	at Atlanta	7 p.m.
05.04	Omaha	7:30 p.m.
05.07	at San Diego	10 p.m.
05.09	at Omaha	8 p.m.
05.11	San Diego	7 p.m.

All times Eastern and subject to change



over two matches while hitting .453. She totaled 34 points for an average of 4.25 points per set.

### MAKING MOVES

After dropping their last two matches, the Fury made one of the biggest transactions of the inaugural season, acquiring Tori Stringer from the Atlanta Vibe. Columbus sent their 2025 and 2026 first round picks to Atlanta in exchange for the two-time All-American.

- ⇒ Stringer was an impact player at Louisville and in her time with the Vibe. She had four matches with 35+ assists and a season-high of 47 assists in a four-set loss at Grand Rapids.
- ⇒ Stringer will reunite with head coach Ángel Pérez as she played for him in the Puerto Rican League in 2022, winning a league championship and being named the setter of the year.
- ⇒ Tori will face a familiar foe in her first match with the Fury, going against former Louisville teammate, Claire Chaussee.

The team followed the Stringer transaction with two free agent signings of Bartsch-Hackley and Perović.

- ⇒ Bartsch-Hackley is an Olympic Gold Medalist as a member of the 2020 Olympic team that won the first Olympic gold for the U.S. in women's indoor volleyball. She was named the Best Outside Hitter of the tournament alongside teammate Jordan Larson.
- ⇒ Perović brings over 15 years of international experience with her most recent seasons played in China and Italy. She's won several championships across various leagues with her most decorated season coming in 2018-19 while playing in Hungary.

With the departure of Asjia O'Neal to join the U.S. National Team in preparations for Vvolleyball Nations League and the 2024 Olympic, the team signed draftee Kendall Kipp who joined the team ahead of their match against San Diego on April 12.

- ⇒ Kipp was a three-time All-American with Stanford and a two-time Pac-12 Player of the Year.
- ⇒ She was part of the 2019 NCAA National Champions at Stanford.
- ⇒ Kipp joined the team after finishing her season in Italy where she played for Il Bisonte Firenze, totaling 147 kills in 12 matches of action.

### MID-SEASON SLUMP

After a 4-2 start on the year, the Fury have dropped seven of their last eight matches, their only win coming at home over Atlanta.

- ⇒ In this stretch the team has seen three new additions to the roster while Asjia O'Neal, Jenna Rosenthal, Ray Santos, and Kaitlyn Hord have all spent time out due to injury or illness.
- ⇒ The team has used five different starting lineups over the eight-match stretch.
- ⇒ In the back-to-back sweeps at the hands of Atlanta and Orlando, the Fury combined for just 10 blocks over the six sets.
- ⇒ The pin hitters have been inconsistent over the stretch with Reagan Cooper putting up three single-digit kill performances, but also going 10-18 in the loss to Atlanta and putting down 17 kills in the loss to Omaha.
- ⇒ Megan Courtney Lush had her best performance of the season with 17 kills of her own in the loss to Omaha.

### ROCKIN' ROOKIES

Columbus has had significant contributions from their rookie class, led by Reagan Cooper. The team also saw great performances from Asjia O'Neal while with the team and have seen a new rookie step up in just her first match, Kendall Kipp.

- ⇒ Kendall Kipp made an immediate impact for the Fury in her debut on April 12. She totaled 20 kills and had a team-high 63 attempts in the match. She also added two blocks on the night.
- ⇒ Cooper has led the team in points and kills in each of the first three contests. She scored 24 points in the team's win over Omaha, the most of any Fury player this season.
- ⇒ O'Neal saw her first action against Orlando and had to knock off a bit of rust on her way to seven points. The rust was gone by the team's home opener where she scored 19 points behind 15 kills and four blocks.
- ⇒ Cooper continues to dominate, especially over the team's four-match win streak. She has now tallied three double-doubles including a 29-kill, 16 dig performance at Orlando. Her 29 kill performance is tied for the most by any player in the league this season (Khat Bell, Vegas).
- ⇒ Both Cooper and O'Neal have earned Player of the Week honors from the league. Cooper after a monster three-match stretch on 2/27 and O'Neal on 3/26 after putting up 30 kills in two matches in her return to the court from injury.

### ONCE UPON A TIME...

The Fury played their home opener on January 25 and had a 22 day break before getting back in action. They have had the last three weeks to prepare for match number two. The team had a couple of solid performances in their opener despite dropping the match in straight sets to Grand Rapids.

- ⇒ Kaitlyn Hord notched eight kills on an impressive .429 percentage for the match. Her percentage was a match-high for all players with at least 10 attack attempts.
- ⇒ Rookie Reagan Cooper led the team with nine kills in her professional debut.
- ⇒ Ray Santos dished out 20 assists and spread the ball around with five hitters totaling 10-plus attempts.
- ⇒ Valeria León had a team-high 13 digs.

### BIG TEN COUNTRY

Columbus lies in the heart of Big Ten country and is home to the Ohio State Buckeyes. The team roster features eight players who spent at least one season at a Big Ten school.

- ⇒ León and Moore are Buckeyes with León ending her Buckeye career as the program's all-time leader in digs and digs per set.
- ⇒ Rainelle Jones spent her collegiate career at Maryland where she led the country in blocks per set (1.71) in 2021.
- ⇒ The roster also features two Penn State alum, Kaitlyn Hord and Courtney Lush. Courtney Lush won two national titles with the Nittany Lions, while Hord garnered three All-American nods while there.
- ⇒ Hord also spent one season at Nebraska, where she led the NCAA in blocks per set (1.63) in 2022.
- ⇒ Before a four-year career at Washington, Samantha Drechsel spent her freshman season at Maryland.

### PRO VOLLEYBALL FEDERATION PRESEASON POLL

The Fury were voted to finish third in the League's preseason poll, tying Grand Rapids with 23 points. The Fury did receive on first-place vote in the poll.

Columbus also placed one player on the Preseason All-League team, rookie Asjia O'Neal. O'Neal was the first overall draft selection of the League's inaugural College Draft.

### PRESEASON SELECTED ORDER OF FINISH

Rank	Team	Points
------	------	--------

1. Omaha Supernovas [4] - 33
  2. Atlanta Vibe [2] - 32
  3. Columbus Fury [1] - 23  
Grand Rapids Rise - 23
  5. San Diego Mojo - 15
  6. Orlando Valkyries - 12
  7. Vegas Thrill - 9
- First-place votes in parenthesis*

### PRESEASON ALL-LEAGUE TEAM

Leah Edmond, Atlanta Vibe\*

Morgan Hentz, Atlanta Vibe

**Asjia O'Neal, Columbus Fury**

Claire Chaussee, Grand Rapids Rise

Bethania De La Cruz, Omaha Supernovas\*

Molly McCage, Vegas Thrill

*\*denotes unanimous selection*

### BIG BLOCKS

The Fury are stacked at middle blocker. With four middles on the roster, they combined for huge numbers in college:

- ⇒ First overall draft pick, Asjia O'Neal is coming off back-to-back National Championships with the Longhorns and made her mark as the program's all-time leading blocker
- ⇒ Kaitlyn Hord was named an All-American four times between Penn State and Nebraska, closing out her career by leading the nation in blocks while with the Cornhuskers.
- ⇒ Rainelle Jones was dominant in her time at Maryland, and just one season before Hord, led the nation in blocks for the 'Terps.
- ⇒ Jenna Rosenthal was named All-Big East twice while at Marquette and worked her way to the highest levels of the German Bundesliga in her five-year career as a pro.

### MORE THAN AN ATHLETE

The Fury features several athletes who have made their mark outside of volleyball:

- ⇒ Megan Courtney Lush is returning to pro volleyball after a two year hiatus when she gave birth to her first child, Nora.
- ⇒ Valeria León is a practicing attorney with a law firm in Puerto Rico, ECIJA SBGB. She is an Associate Lawyer with the firm.
- ⇒ Jenna Rosenthal spent two years as a civil engineer before returning to the pro ranks.
- ⇒ Asjia O'Neal has had to battle for her spot in the limelight after undergoing two open-heart surgeries, the most recent in 2020.
- ⇒ Rainelle Jones spent time working as an analyst for the Big Ten Network covering volleyball.

### PUERTO RICAN INFLUENCE

The Fury boast the only Latino head coach in the league and he brought three Puerto Rican players with him to the team. Valeria León, Raymariely Santos, and Ivania Ortiz all played collegiately in the States but had since returned home to Puerto Rico to play professionally. Santos has played in leagues all around the world. The coaching staff also features Argentinian, Carlos Cardona, as the assistant coach and two Puerto Rican staffers, Jose Figueroa (technical director) and Felix Gordillo (athletic trainer).

# PROJECTED STARTERS



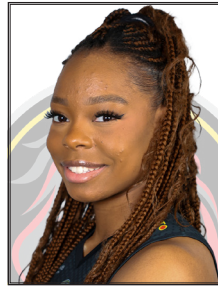
**OH - Courtney Lush**



**MB - Hord**



**Opp - Kipp**



**OH - Moore**



**MB - Rosenthal**



**S - Santos**

# ALPHABETICAL ROSTER

\* - Franchise Tagged Players

NO.	NAME	POS	HT	EXP	HOMETOWN	COLLEGE	ACQUIRED	INSTAGRAM
4	Michelle Bartsch-Hackley	OH	6-3	11	Collinsville, Ill.	Illinois	FA	bartschhackley14
8	Reagan Cooper	OH	6-2	R	Rowlett, Texas	Texas Tech/Kansas	DR	_reagancooper
17	Megan Courtney Lush*	OH	6-1	7	Kettering, Ohio	Penn State	FA	megcourt17
9	Samantha Drechsel	Opp	6-4	2	Woodinville, Wash.	Washington/Maryland	FA	samdrechsel
23	Kaitlyn Hord	MB	6-4	1	Lexington, Ky.	Penn State/Nebraska	FA	kait_hord
1	Rainelle Jones	MB	6-4	1	Oxon Hill, Md.	Maryland	FA	rainellejones0
11	Kendall Kipp	Opp	6-5	0.5	Newport Beach, Calif.	Stanford	DR	kendallkipp
3	Valeria León	L	5-6	6	Ponce, Puerto Rico	Ohio State	FA	valerialeonp_
18	Jenaisya Moore	OH	6-0	R	Germantown, Md.	Tennessee/Ohio State	DR	jenaisya_moore
15	Ivania Ortiz	OH	5-9	4	San Juan, Puerto Rico	Hofstra	FA	ivaniia_ortiz
14	Nikoleta Perović	OPP	6-4	16	Bar, Montenegro		FA	nikoleta_perovic_
16	Jenna Rosenthal*	MB	6-6	5	Fon du Lac, Wisc.	Marquette	FA	jenna.rosenthal
2	Ray Santos	S	5-10	9	Ponce, Puerto Rico	Arkansas	FA	rsantos33
12	Tori Stringer	S	5-11	2	Los Gatos, Calif.	Louisville	TR	toridilfer

FA = Free Agency DR = Draft TR = Trade

## NUMERICAL

- 1 Rainelle Jones
- 2 Ray Santos
- 3 Valeria León
- 4 Michelle Bartsch-Hackley
- 8 Reagan Cooper
- 9 Samantha Drechsel
- 11 Kendall Kipp
- 12 Tori Stringer
- 14 Nikoleta Perović
- 15 Ivania Ortiz
- 16 Jenna Rosenthal
- 17 Megan Courtney Lush
- 18 Jenaisya Moore
- 23 Kaitlyn Hord

## FROM WHERE?

Puerto Rico	3
Maryland	2
California	2
Illinois	1
Kentucky	1
Montenegro	1
Ohio	1
Texas	1
Washington	1
Wisconsin	1

## COACHING STAFF

**Head Coach:** Ángel Pérez (Polytechnic University of Puerto Rico '06)

**Assistant Coach:** Carlos Cardona

**Technical Director:** Jose Figueroa

**Team Services Director:** Chris Podraza (Minnesota '89)

## PRONUNCIATION GUIDE

Name	Pronunciation
Michelle Bartsch-Hackley	..... BARCH
Reagan Cooper	.....RAY-gun
Samantha Drechsel	..... Drex-ull
Rainelle Jones	.....Ray-NELL
Valeria León	..... Vuh-lair-ee-uh Leh-ON
Jenaisya Moore	..... Jen-Asia
Ivania Ortiz	..... EE-von-ya
Nikoleta Perović	.....Pair-uh-VICH
Ray Santos	.....RYE
Ángel Pérez	.....On-Hell Peh-res
Carlos Cardona	..... Car-doh-nuh

**Instagram**

@columbusfury

**TikTok**

columbusfury

**X (Twitter)**

@columbusfury

**Facebook**

/columbusfury

**YouTube**

columbusfuryvolleyball

# HEAD COACH ÁNGEL PÉREZ

Pérez is a distinguished former international player and one of the best-ever male players from Puerto Rico, having played in France, Germany, Austria, Italy, Romania, and Slovenia. He also played on the Puerto Rican men’s national team and for the Changos de Naranjito in the Puerto Rican men’s pro volleyball league.



Pérez coached the Puerto Rican Women’s Superior Volleyball League’s Las Pinkin de Corozal to back-to-back league championships and was also named the league’s Manager of the Year for the second consecutive year in just his third season as a head coach.

Pérez played one season in the United States at BYU before returning home to play at Polytechnic University of Puerto Rico from 2002-06. Starting in 2006 Pérez played for the Puerto Rican men’s national team and spent more than a dozen years representing his native Puerto Rico in international play. He was captain of the national team from 2013-18.

***The Pérez File***

Hometown.....Guaynabo, Puerto Rico  
 Alma Mater ..... Polytechnic University of Puerto Rico (2006)  
 Date of Birth ..... May 20, 1982  
 Wife ..... Zuania [Zoo-AHN-ya]  
 Children ..... Gabriella, Bella

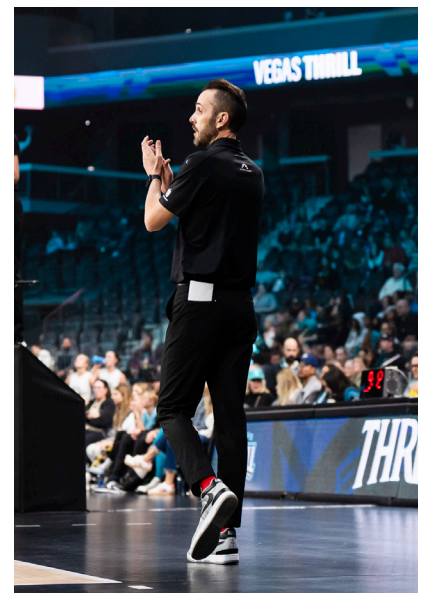
***Coaching History***

2023-present .....Columbus Fury (Head Coach)  
 2020-23 ..... Las Pinkin de Corozal (Head Coach)

**Year-By-Year (as Head Coach)**

Year	Team	Overall	League	Country	Postseason
2021	Las Pinkin de Corozal	--	Liga de Voleibol Superior Femenina	Puerto Rico	--
2022	Las Pinkin de Corozal	--	Liga de Voleibol Superior Femenina*	Puerto Rico	LVSF Champions
2023	Las Pinkin de Corozal	--	Liga de Voleibol Superior Femenina*	Puerto Rico	LVSF Champions
Totals	3 Years				

\* - PVSF Manager of the Year



# NATIONWIDE ARENA

200 W Nationwide Blvd  
Columbus, OH 43215  
614.380.3879

Located on the corner of Nationwide Boulevard and Front Street in downtown Columbus, Nationwide Arena was built on a piece of property that was the site of the historic Ohio State Penitentiary. The support of naming rights partner Nationwide Insurance paved the way for the city to acquire an NHL expansion team, the Columbus Blue Jackets.

Nationwide Arena opened with back to back SOLD OUT Soul 2 Soul concerts featuring Tim McGraw and Faith Hill. Named one of the best arenas in the NHL, the facility opened to great fanfare in September of 2000 and has since hosted the NHL All-Star Game, regular season and playoff hockey, NCAA championships, local, regional and national conferences and a multitude of concerts and touring events.



## COLUMBUS FURY QUICK FACTS

**Location**..... Columbus, Ohio  
**First Season**..... 2024  
**Colors** ..... Fury Red, Warrior Gold, Bold Pewter  
**Home Arena** ..... Nationwide Arena  
**Capacity** ..... 20,000  
**Website**..... ColumbusFury.com

**CEO** ..... Dr. David Paitson  
**Vice President, Marketing and Communications** ..... Kylie Randall  
**Vice President, Ticket Sales and Operations** ..... Maria Zigmunt  
**Director, Communications** ..... Cassie Kelley  
**Director, Video Content Production** ..... Anthony Marling  
**Director, Corporate Partnerships** ..... Chris Rooks  
**Corporate Partnerships Executive** ..... Jessica McCombs  
**Partnership Activation and Service Executive** ..... Connor Sells  
**Ticket Sales and Operations Associate** ..... Mitchell Crouse  
**Ticket Sales and Operations Associate** ..... Erika Kolb  
**Community Ambassador** ..... Audrey Flaugh

### COLUMBUS FURY SIGN KENDALL KIPP

**COLUMBUS, Ohio**—The Columbus Fury have signed their third round draft seletion three-time All-American and two-time Pac-12 Player of the Year, Kendall Kipp. Kipp was most recently in Italy where she was a member of Il Bionte Firenze. She appeared in 12 matches in Italy totaling 147 kills and hitting .377, the third-best mark on the team.

Columbus drafted Kipp with their third round pick after her second-consecutive Pac-12 Player of the Year season at Stanford. She was part of the national championship team in 2019 and led the team to back-to-back Pac-12 championships in 2022 and 2023.

“We are excited to bring in another young talent from our draft class,” explained head coach Ángel Pérez. “Kendall played in one of the best leagues in the world in Italy and brings great competitiveness to our team. Her addition will bring more depth to the right side and keeps our team in contention to grab one of the top four spots at the end of the season.”

Kipp will make her debut with Columbus tonight against San Diego for the Fury’s first nationally televised match on CBS Sports Network. The match is at 7 p.m. at Nationwide Arena, doors open at 6 p.m.



# PRO VOLLEYBALL FEDERATION



Pro Volleyball Federation is REAL PRO VOLLEYBALL and the premier women's professional volleyball league in North America. Pro Volleyball Federation will begin play in January 2024 with world class players and coaches, including some of America's

greatest volleyball players and elite players from around the world. Our entire focus is on ensuring that our level and quality of play, our treatment of players, the quality of our event presentations, and our day-to-day fan experience is world class and the very best offered in North America. For more information, visit [ProVolleyball.com](http://ProVolleyball.com).

## 2024 Pro Volleyball Federation Standings

	W	L	PCT.	Home	Away
Atlanta	15	4	0.789	7-2	8-2
Omaha	11	6	0.647	6-3	5-3
Grand Rapids	8	8	0.500	4-4	4-4
San Diego	7	8	0.467	4-4	3-4
Orlando	7	10	0.412	3-6	4-4
Columbus	5	10	0.333	3-4	2-6
Vegas	5	12	0.294	1-7	4-5

## UPCOMING PRO VOLLEYBALL FEDERATION SCHEDULE

### Wednesday, April 17

Columbus at Vegas .....10 p.m. ET

### Thursday, April 18

Orlando at Grand Rapids .....7 p.m. ET

### Friday, April 19

Atlanta at Columbus .....7 p.m. ET

### Saturday, April 20

San Diego at Omaha .....7 p.m. ET

Grand Rapids at Vegas .....10 p.m. ET

### Sunday, April 21

Atlanta at Orlando ..... 2 p.m. ET

### Tuesday, April 23

Omaha at San Diego .....10 p.m. ET

### Friday, April 26

Orlando at Columbus .....7 p.m. ET

Grand Rapids at Omaha .....9:30 p.m. ET

Vegas at San Diego .....10 p.m. ET



## COMING IN 2025

Dallas

Indianapolis

Kansas City

## MICHELLE BARTSCH-HACKLEY 4

*Outside Hitter, 6-3, Collinsville, Ill./Illinois*

Career Highlights

- Olympic Gold Medalist (Tokyo, 2020), named Best Outside Hitter
- FIVB Volleyball Nations League Gold Medalist, named MVP and Best Outside Hitter



**MATCH-BY-MATCH STATISTICS**

	SP	K	TA	PCT	SA	AST	DIG	BLK
at Grand Rapids	-	-	-	<b>Not with team</b>	-	-	-	-
at Orlando	-	-	-	<b>Not with team</b>	-	-	-	-
Omaha	-	-	-	<b>Not with team</b>	-	-	-	-
at Las Vegas	-	-	-	<b>Not with team</b>	-	-	-	-
Las Vegas	-	-	-	<b>Not with team</b>	-	-	-	-
at Orlando	-	-	-	<b>Not with team</b>	-	-	-	-
at Grand Rapids	-	-	-	<b>Not with team</b>	-	-	-	-
Las Vegas	-	-	-	<b>Not with team</b>	-	-	-	-
Grand Rapids	-	-	-	<b>Not with team</b>	-	-	-	-
Atlanta	3	0	0	.000	0	1	0	0
at Atlanta	1	2	10	.200	0	0	2	1
Orlando	1	2	9	.111	0	0	0	0
at Omaha	2	0	0	.000	0	0	0	0
at San Diego	1	0	0	.000	0	0	0	0
San Diego	1	0	0	.000	0	2	0	0
at Las Vegas								
Atlanta								
Orlando								
Grand Rapids								
at Atlanta								
Omaha								
at San Diego								
at Omaha								
San Diego								

## REAGAN COOPER 8

*Outside Hitter, 6-2, Rowlett, Texas/Kansas*

Career Highlights

- Named a third team All-American in 2023
- 363 kills on a .346 hitting percentage in 2023
- 702 kills and 118 blocks at Texas Tech



**MATCH-BY-MATCH STATISTICS**

	SP	K	TA	PCT	SA	AST	DIG	BLK
at Grand Rapids	3	9	36	.139	0	0	3	1
at Orlando	4	19	35	.429	1	0	5	1
Omaha	4	22	58	.224	0	0	11	2
at Las Vegas	3	15	32	.313	2	1	7	1
Las Vegas	4	21	57	.263	1	0	15	2
at Orlando	5	29	77	.234	1	0	16	1
at Grand Rapids	4	8	26	.115	0	0	9	1
Las Vegas	4	14	52	.173	0	1	8	1
Grand Rapids	4	8	30	.100	1	0	13	1
Atlanta	4	22	55	.290	1	0	14	1
at Atlanta	3	4	18	.111	0	1	6	0
Orlando	3	10	18	.556	0	0	3	0
at Omaha	4	17	41	.366	0	0	3	0
at San Diego	4	18	51	.255	0	2	12	1
San Diego	5	22	49	.388	0	1	23	0
at Las Vegas								
Atlanta								
Orlando								
Grand Rapids								
at Atlanta								
Omaha								
at San Diego								
at Omaha								
San Diego								

## MEGAN COURTNEY LUSH 17

*Outside Hitter, 6-1, Kettering, Ohio/Penn State*

Career Highlights

- Won the 2021-22 Italian A1 League Super Cup
- MVP of Super Cup in 2021-22 with Imoco Volley
- 2019 FIVB Nations League Best Libero



**MATCH-BY-MATCH STATISTICS**

	SP	K	TA	PCT	SA	AST	DIG	BLK
at Grand Rapids	-	-	-	-	-	-	-	-
at Orlando	3	4	18	.000	0	2	12	1
Omaha	4	11	31	.258	0	2	11	1
at Las Vegas	3	10	28	.250	1	0	9	1
Las Vegas	-	-	-	-	-	-	-	-
at Orlando	5	7	26	-.038	0	1	22	2
at Grand Rapids	4	13	37	.243	3	0	13	2
Las Vegas	4	9	33	.000	0	0	11	3
Grand Rapids	4	14	44	.136	0	0	12	1
Atlanta	4	8	25	.240	0	4	7	3
at Atlanta	3	8	18	.389	0	0	7	0
Orlando	3	4	17	.118	0	1	5	1
at Omaha	4	17	36	.361	0	0	13	0
at San Diego	4	14	39	.205	0	0	15	2
San Diego	5	8	39	-.077	0	0	16	1
at Las Vegas								
Atlanta								
Orlando								
Grand Rapids								
at Atlanta								
Omaha								
at San Diego								
at Omaha								
San Diego								

## SAMANTHA DRECHSEL 9

*Opposite, 6-4, Woodinville, Wash./Washington*

Career Highlights

- Won Swiss Super Cup w/ Viteos NUC in 2021-22
- Two-time AVCA All-American
- 1,700 career kills in college



**MATCH-BY-MATCH STATISTICS**

	SP	K	TA	PCT	SA	AST	DIG	BLK
at Grand Rapids	2	2	10	.100	1	0	4	0
at Orlando	3	6	12	.333	0	0	4	0
Omaha	4	9	38	.079	0	2	11	2
at Las Vegas	3	7	19	.105	0	0	7	2
Las Vegas	4	9	27	.185	0	0	10	1
at Orlando	5	9	35	.027	2	0	10	0
at Grand Rapids	-	-	-	-	-	-	-	-
Las Vegas	-	-	-	-	-	-	-	-
Grand Rapids	4	11	36	.111	1	0	16	1
Atlanta	4	9	29	.069	0	0	9	0
at Atlanta	2	3	11	-.091	0	1	4	0
Orlando	2	2	12	-.167	0	0	2	0
at Omaha	4	5	20	-.050	0	1	5	2
at San Diego	4	15	27	.444	0	0	11	1
San Diego	1	0	7	-.142	0	0	0	1
at Las Vegas								
Atlanta								
Orlando								
Grand Rapids								
at Atlanta								
Omaha								
at San Diego								
at Omaha								
San Diego								



## KAITLYN HORD

*Middle Blocker, 6-4, Lexington, Ky./Nebraska*

Career Highlights

- Four-time AVCA All-American
- Led the nation in blocks with 1.61 per set in 2022
- Totaled 1,175 career kills and 697 career blocks

# 23



**MATCH-BY-MATCH STATISTICS**

	SP	K	TA	PCT	SA	AST	DIG	BLK
at Grand Rapids	3	8	14	.429	0	0	3	1
at Orlando	4	4	11	.273	1	0	2	2
Omaha	3	3	8	.375	0	0	4	1
at Las Vegas	3	4	10	.400	2	0	3	4
Las Vegas	4	11	28	.321	0	0	3	1
at Orlando	5	6	18	.278	0	0	4	4
at Grand Rapids	4	3	12	.167	0	0	2	2
Las Vegas	2	3	11	.273	0	1	0	1
Grand Rapids	1	3	8	.375	0	0	2	3
Atlanta	3	5	12	.333	0	0	1	4
at Atlanta	2	3	6	.500	0	0	0	0
Orlando	3	2	8	.250	0	0	2	2
at Omaha	-	-	-	-	-	-	-	-
at San Diego	-	-	-	-	-	-	-	-
San Diego	5	2	16	-.063	1	0	3	3
at Las Vegas								
Atlanta								
Orlando								
Grand Rapids								
at Atlanta								
Omaha								
at San Diego								
at Omaha								
San Diego								

## RAINELLE JONES

*Middle Blocker, 6-3, Oxon Hill, Md./Maryland*

Career Highlights

- Totaled 718 total blocks in her career (UM record)
- Led the NCAA with 1.73 blocks per set in 2021
- 2022 Volleyball Magazine All-America HM

# 1



**MATCH-BY-MATCH STATISTICS**

	SP	K	TA	PCT	SA	AST	DIG	BLK
at Grand Rapids	3	2	11	-.272	1	0	4	1
at Orlando	1	0	0	.000	0	0	0	0
Omaha	3	2	4	.500	0	0	1	1
at Las Vegas	3	4	9	.222	0	0	2	2
Las Vegas	4	7	13	.538	0	0	2	2
at Orlando	5	12	26	.346	2	0	1	5
at Grand Rapids	4	5	13	.000	2	1	0	4
Las Vegas	4	9	21	.238	1	0	5	1
Grand Rapids	3	3	10	.300	0	0	0	1
Atlanta	1	0	0	.000	0	0	0	0
at Atlanta	1	1	4	.250	0	0	0	0
Orlando	1	1	3	.333	0	0	0	0
at Omaha	2	1	4	.250	0	0	1	0
at San Diego	2	2	3	.333	1	0	1	0
San Diego	3	1	7	-.142	0	0	3	0
at Las Vegas								
Atlanta								
Orlando								
Grand Rapids								
at Atlanta								
Omaha								
at San Diego								
at Omaha								
San Diego								

## KENDALL KIPP

*Opposite, 6-5, Newport Beach, Calif./Stanford*

Career Highlights

- 2019 NCAA Champion with Stanford
- 3x Pac-12 champion, 2x Pac-12 Player of the Year
- 3x AVCA All-American

# 11



**MATCH-BY-MATCH STATISTICS**

	SP	K	TA	PCT	SA	AST	DIG	BLK
at Grand Rapids	-	-	-	<b>Not with team</b>	-	-	-	-
at Orlando	-	-	-	<b>Not with team</b>	-	-	-	-
Omaha	-	-	-	<b>Not with team</b>	-	-	-	-
at Las Vegas	-	-	-	<b>Not with team</b>	-	-	-	-
Las Vegas	-	-	-	<b>Not with team</b>	-	-	-	-
at Orlando	-	-	-	<b>Not with team</b>	-	-	-	-
at Grand Rapids	-	-	-	<b>Not with team</b>	-	-	-	-
Las Vegas	-	-	-	<b>Not with team</b>	-	-	-	-
Grand Rapids	-	-	-	<b>Not with team</b>	-	-	-	-
Atlanta	-	-	-	<b>Not with team</b>	-	-	-	-
at Atlanta	-	-	-	<b>Not with team</b>	-	-	-	-
Orlando	-	-	-	<b>Not with team</b>	-	-	-	-
at Omaha	-	-	-	<b>Not with team</b>	-	-	-	-
at San Diego	-	-	-	<b>Not with team</b>	-	-	-	-
San Diego	5	20	63	.095	1	0	6	2
at Las Vegas								
Atlanta								
Orlando								
Grand Rapids								
at Atlanta								
Omaha								
at San Diego								
at Omaha								
San Diego								

## VALERIA LEÓN

*Libero, 5-6, Ponce, Puerto Rico/Ohio State*

Career Highlights

- Best Libero of Puerto Rican League in 2022-23
- Left OSU as program leader in digs (1,795) and digs per set (3.51)

# 3



**MATCH-BY-MATCH STATISTICS**

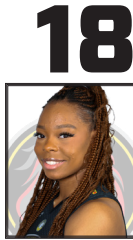
	SP	K	TA	PCT	SA	AST	DIG	BLK
at Grand Rapids	3	0	0	.000	0	0	13	0
at Orlando	4	0	0	.000	0	4	13	0
Omaha	4	0	0	.000	0	5	14	0
at Las Vegas	3	0	0	.000	0	3	6	0
Las Vegas	4	0	0	.000	0	8	16	0
at Orlando	5	0	0	.000	0	1	24	0
at Grand Rapids	4	0	0	.000	0	3	7	0
Las Vegas	4	0	0	.000	0	3	14	0
Grand Rapids	4	0	0	.000	0	3	7	0
Atlanta	4	0	0	.000	0	4	16	0
at Atlanta	3	0	0	.000	0	2	5	0
Orlando	3	0	0	.000	0	1	11	0
at Omaha	4	0	0	.000	0	4	12	0
at San Diego	1	0	0	.000	0	3	0	0
San Diego	5	0	0	.000	0	2	11	0
at Las Vegas								
Atlanta								
Orlando								
Grand Rapids								
at Atlanta								
Omaha								
at San Diego								
at Omaha								
San Diego								

## JENAI SYA MOORE

*Outside Hitter, 6-0, Germantown, Md./Tennessee*

Career Highlights

- 2023 AVCA All-Southeast Region team
- Career-high 394 kills in 2023 at Tennessee
- Totaled 804 kills in 4 seasons at Ohio State



**MATCH-BY-MATCH STATISTICS**

	SP	K	TA	PCT	SA	AST	DIG	BLK
at Grand Rapids	1	1	8	-.250	0	0	3	0
at Orlando	2	0	8	-.375	0	0	0	0
Omaha	-	-	-	-	-	-	-	-
at Las Vegas	-	-	-	-	-	-	-	-
Las Vegas	3	9	30	.133	1	0	8	2
at Orlando	2	0	0	.000	0	0	0	0
at Grand Rapids	3	0	4	-.500	0	0	4	0
Las Vegas	1	1	3	.000	0	0	1	0
Grand Rapids	2	0	0	.000	0	0	1	0
Atlanta	1	0	0	.000	0	0	0	0
at Atlanta	1	0	3	-.333	0	0	0	0
Orlando	1	1	3	.333	0	0	1	1
at Omaha	-	-	-	-	-	-	-	-
at San Diego	1	0	0	.000	0	0	0	0
San Diego	3	0	0	.000	0	0	0	0
at Las Vegas	-	-	-	-	-	-	-	-
Atlanta	-	-	-	-	-	-	-	-
Orlando	-	-	-	-	-	-	-	-
Grand Rapids	-	-	-	-	-	-	-	-
at Atlanta	-	-	-	-	-	-	-	-
Omaha	-	-	-	-	-	-	-	-
at San Diego	-	-	-	-	-	-	-	-
at Omaha	-	-	-	-	-	-	-	-
San Diego	-	-	-	-	-	-	-	-

# 18

## IVANIA ORTIZ

*Outside/DS, 5-9, San Juan, Puerto Rico/Hofstra*

Career Highlights

- Back-to-back Puerto Rican League Champion w/ Pinkin de Corozal in 2022 & 2023
- 333 kills, 550 digs, and 98 aces in 2 yrs at Hofstra



**MATCH-BY-MATCH STATISTICS**

	SP	K	TA	PCT	SA	AST	DIG	BLK
at Grand Rapids	3	0	0	.000	0	0	0	0
at Orlando	4	0	0	.000	0	0	0	0
Omaha	4	0	0	.000	0	1	0	0
at Las Vegas	3	0	0	.000	3	0	3	0
Las Vegas	4	0	0	.000	0	0	1	0
at Orlando	5	0	0	.000	1	0	0	0
at Grand Rapids	3	0	0	.000	0	0	0	0
Las Vegas	4	0	0	.000	0	1	4	0
Grand Rapids	4	0	0	.000	0	0	2	0
Atlanta	3	0	0	.000	0	0	0	0
at Atlanta	2	0	0	.000	2	0	1	0
Orlando	3	0	0	.000	0	0	0	0
at Omaha	4	0	0	.000	0	0	1	0
at San Diego	4	0	0	.000	0	3	10	0
San Diego	5	0	0	.000	0	0	0	0
at Las Vegas	-	-	-	-	-	-	-	-
Atlanta	-	-	-	-	-	-	-	-
Orlando	-	-	-	-	-	-	-	-
Grand Rapids	-	-	-	-	-	-	-	-
at Atlanta	-	-	-	-	-	-	-	-
Omaha	-	-	-	-	-	-	-	-
at San Diego	-	-	-	-	-	-	-	-
at Omaha	-	-	-	-	-	-	-	-
San Diego	-	-	-	-	-	-	-	-

# 15

## NIKOLETA PEROVIĆ

*Opposite, 6-4, Bar, Montenegro*

Career Highlights

- 2018-19 Best Scorer, Best Opposite and Best Server in Hungary with Swietelsky Békéscsaba RSE
- Most recently played in China and Italy



**MATCH-BY-MATCH STATISTICS**

	SP	K	TA	PCT	SA	AST	DIG	BLK
at Grand Rapids	-	-	-	<b>Not with team</b>	-	-	-	-
at Orlando	-	-	-	<b>Not with team</b>	-	-	-	-
Omaha	-	-	-	<b>Not with team</b>	-	-	-	-
at Las Vegas	-	-	-	<b>Not with team</b>	-	-	-	-
Las Vegas	-	-	-	<b>Not with team</b>	-	-	-	-
at Orlando	-	-	-	<b>Not with team</b>	-	-	-	-
at Grand Rapids	-	-	-	<b>Not with team</b>	-	-	-	-
Las Vegas	-	-	-	<b>Not with team</b>	-	-	-	-
Grand Rapids	-	-	-	<b>Not with team</b>	-	-	-	-
Atlanta	-	-	-	-	-	-	-	-
at Atlanta	2	3	18	-.056	0	0	4	2
Orlando	2	4	13	.077	0	0	3	1
at Omaha	1	1	9	.000	0	0	3	0
at San Diego	3	2	6	.000	0	0	0	0
San Diego	-	-	-	-	-	-	-	-
at Las Vegas	-	-	-	-	-	-	-	-
Atlanta	-	-	-	-	-	-	-	-
Orlando	-	-	-	-	-	-	-	-
Grand Rapids	-	-	-	-	-	-	-	-
at Atlanta	-	-	-	-	-	-	-	-
Omaha	-	-	-	-	-	-	-	-
at San Diego	-	-	-	-	-	-	-	-
at Omaha	-	-	-	-	-	-	-	-
San Diego	-	-	-	-	-	-	-	-

# 14

## JENNA ROSENTHAL

*Middle Blocker, 6-6, Fan du Lac, Wisc./Marquette*

Career Highlights

- 2021 second place finish in the German Bundesliga
- 2019 NORCECA Champions Cup win with US Team
- 2019 Pan American Cup win with US Team



**MATCH-BY-MATCH STATISTICS**

	SP	K	TA	PCT	SA	AST	DIG	BLK
at Grand Rapids	-	-	-	-	-	-	-	-
at Orlando	-	-	-	-	-	-	-	-
Omaha	-	-	-	-	-	-	-	-
at Las Vegas	-	-	-	-	-	-	-	-
Las Vegas	-	-	-	-	-	-	-	-
at Orlando	2	0	0	.000	0	0	0	0
at Grand Rapids	-	-	-	-	-	-	-	-
Las Vegas	3	7	12	.583	0	0	3	1
Grand Rapids	-	-	-	-	-	-	-	-
Atlanta	2	2	9	.000	0	0	0	1
at Atlanta	-	-	-	-	-	-	-	-
Orlando	-	-	-	-	-	-	-	-
at Omaha	3	3	10	.200	0	1	1	4
at San Diego	3	1	6	.000	1	0	2	1
San Diego	3	0	3	.000	0	0	0	1
at Las Vegas	-	-	-	-	-	-	-	-
Atlanta	-	-	-	-	-	-	-	-
Orlando	-	-	-	-	-	-	-	-
Grand Rapids	-	-	-	-	-	-	-	-
at Atlanta	-	-	-	-	-	-	-	-
Omaha	-	-	-	-	-	-	-	-
at San Diego	-	-	-	-	-	-	-	-
at Omaha	-	-	-	-	-	-	-	-
San Diego	-	-	-	-	-	-	-	-

# 16

## RAYMARIELY SANTOS

# 2

**Setter, 6-0, Ponce, Puerto Rico/Arkansas**

Career Highlights

- Won bronze w/ Puerto Rico in 2022 FIVB Challenger Cup
- 2022 Puerto Rican League Champions
- Named the Kazakhstan League MVP 2015-16



**MATCH-BY-MATCH STATISTICS**

	SP	K	TA	PCT	SA	AST	DIG	BLK
at Grand Rapids	3	1	2	.500	0	20	4	1
at Orlando	4	2	6	.333	0	30	11	0
Omaha	4	1	4	.250	0	47	21	0
at Las Vegas	3	1	3	.333	0	32	6	1
Las Vegas	4	2	5	.400	0	38	16	1
at Orlando	5	3	7	.286	0	59	10	0
at Grand Rapids	4	1	6	.167	0	27	9	2
Las Vegas	4	0	1	.000	0	24	8	0
Grand Rapids	-	-	-	-	-	-	-	-
Atlanta	-	-	-	-	-	-	-	-
at Atlanta	-	-	-	-	-	-	-	-
Orlando	1	1	3	.333	0	4	0	0
at Omaha	4	2	2	1.000	0	35	9	1
at San Diego	4	1	4	.000	0	33	6	0
San Diego	5	1	1	1.000	0	33	7	1
at Las Vegas								
Atlanta								
Orlando								
Grand Rapids								
at Atlanta								
Omaha								
at San Diego								
at Omaha								
San Diego								

## TORI STRINGER

# 12

**Setter, 5-11, Los Gatos, Calif./Louisville**

Career Highlights

- 2x All-American at Louisville
- 2x ACC Setter of the Year
- Totaled 2,675 assists and 501 digs at U of L



**MATCH-BY-MATCH STATISTICS**

	SP	K	TA	PCT	SA	AST	DIG	BLK
at Omaha*	5	2	7	.143	0	41	24	1
at Orlando*	4	1	7	-.286	0	20	8	0
San Diego*	3	1	5	.200	1	37	9	0
Grand Rapids*	4	0	6	.000	0	47	8	1
at Grand Rapids*	2	1	2	.500	0	19	9	1
at Vegas*	3	0	2	.000	0	36	5	1
Vegas*	3	1	5	.000	0	22	12	1
Grand Rapids	4	3	5	.600	0	49	12	1
Atlanta	4	2	3	.667	2	51	10	1
at Atlanta	3	0	3	-.333	0	25	7	0
Orlando	3	1	5	.200	0	24	11	0
at Omaha	2	0	2	.000	0	12	2	0
at San Diego	3	1	1	1.000	0	14	7	0
San Diego	2	1	3	.333	1	14	13	0
at Las Vegas								
Atlanta								
Orlando								
Grand Rapids								
at Atlanta								
Omaha								
at San Diego								
at Omaha								
San Diego								

*\*with Atlanta Vibe*

# Season Box Scores

## Match 1: Grand Rapids 3, Columbus Fury 0

26/01/2024		VOLLEYSTATION		PVF		VS	
<b>Match report</b>		<b>Grand Rapids Rise 3 0 Columbus Fury</b>		Set	Duration	Partial score	Score
Match GRR-COL		Date 26/01/2024		1	00:24	8-4 16-9 21-16	25-17
Hall City		Time 19:00		2	00:32	8-7 16-13 21-20	25-23
Spectators		Receipts		3	00:27	8-4 16-12 21-15	25-19
Referee							

Grand Rapids Rise	Set					Points			Serve			Reception			Attack			BK		
	1	2	3	4	5	Tot	BP	W-L	Tot	Err	Pts	Tot	Err	Posk	(Exc%)	Tot	Err		Blo	Pts
01 Bolding Sydney																				
04 Fingal Morgan																				
05 Pritchard Erika																				
07 Grant Nia	6	5	5	5	5	5.5	5	-3	4	1	1	1	1	1	0%	4	1	1	0%	
08 Grote Marin	6	6	6	6	6	6	6	3	4	4	1	1	1	1	25%	4	1	1	50%	2
09 Chausse Claire	2	1	2	2	2	2	2	12	15	9	2	2	2	2	16%	7	5	2	42%	1
10 Scully Shannon															0%					
11 Sauer Kenna															0%					
12 Spaul Sarah															20%					
13 Sears Ashley	1	6	1	1	1	5.4	2	2	1	22	2	1	1	0%	4	1	1	0%	1	
14 Dimirova Emiliya	4	3	4	4	4	6.6	15	6	+12	13	2	1	1	32%	1	12	3	3%	3	
15 Podrasa Mac																				
27 Abbott Symone	3	4	5	5	5	5.5	7	5	-1	8	1	1	1	19%	2	58%	4	23%	1	
28 Caffey Kayla	3	2	3	3	3	7	10	6	+4	12	5	1	1	8%	1	6	75%	3	3	
<b>Players total</b>						<b>62</b>	<b>34</b>	<b>+38</b>	<b>74</b>	<b>13</b>	<b>6</b>	<b>58</b>	<b>4</b>	<b>53%</b>	<b>122</b>	<b>9</b>	<b>6</b>	<b>46</b>	<b>38</b>	<b>10</b>

Coach undefined undefined  
 Assistant undefined undefined  
 Set 1 1 15 3 6 25 3 1 15 - 47% (53%) 34 3 1 15 44% 3  
 Set 2 4 13 3 5 24 5 4 24 3 56% (33%) 43 2 4 13 30% 3  
 Set 3 1 18 4 2 25 5 1 19 1 47% (21%) 45 4 2 3 18 40% 4

Columbus Fury	Set					Points			Serve			Reception			Attack			BK		
	1	2	3	4	5	Tot	BP	W-L	Tot	Err	Pts	Tot	Err	Posk	(Exc%)	Tot	Err		Blo	Pts
01 Jones Rainelle	5	3	4	5	5	5.5	4	2	-1	6	1	1	1	11%	2	3	2	18%	1	
02 Santos Rymariely	6	1	4	4	4	5.4	2	1	+2	8	1	1	1	77%	5	2	1	50%	1	
03 Leon Valeria															13%					
06 Schlegel Maria Priscilla	1	2	5	5	5	5.5	4	2	-3	13	1	1	1	18%	3	56%	2	28%	1	
07 O'Neal Asia																				
08 Cooper Reagan	4	5	5	5	5	5.5	18	5	+3	6	1	1	1	25%	3	36%	2	29%	1	
09 Drechsel Samantha	3	4	5	5	5	5.5	3	2	+2	4	1	1	1	19%	1	1	1	5	25%	
10 Wenz Ashley																				
15 Ortiz De Jesus Ivania																				
16 Rosenthal Jenna																				
17 Courtney Lush Megan																				
18 Moore Jenaiya																				
23 Hord Kaitlyn	2	6	3	3	3	6.3	9	5	+7	6	1	1	1	14%	1	1	1	57%	1	
31 Blossom Gabrielle																				
<b>Players total</b>						<b>36</b>	<b>20</b>	<b>+9</b>	<b>60</b>	<b>2</b>	<b>4</b>	<b>61</b>	<b>6</b>	<b>91%</b>	<b>100</b>	<b>9</b>	<b>10</b>	<b>26</b>	<b>26%</b>	<b>6</b>

Coach undefined undefined  
 Assistant undefined undefined  
 Set 1 1 10 1 6 17 2 22 1 68% (55%) 28 3 1 8 36% 1  
 Set 2 3 8 2 16 24 3 19 4 47% (21%) 37 5 3 8 22% 2  
 Set 3 1 8 3 7 19 1 20 1 35% (26%) 35 3 4 16 32% 3

Grand Rapids Rise		Columbus Fury	
Points	58	61	61
Sin Diff	28	16	16
Reception	58	61	61
Points SO	28	16	16
Each 2.07 receptions	5	3	3
1 Point	4	3	3
+3	3	3	3
0	3	3	3
-4	3	3	3
+16	1	1	1
1 Break point			

BP Break point  
 Er Errors  
 Pts Points  
 W-L Win-Loss  
 Bk Blocked  
 Exc Excellent  
 Sub Substitute  
 Sln Starting lineup  
 Srv Starting serve  
 Stn Starting setter

## Match 2: Orlando 3, Columbus Fury 1

17/02/2024		VOLLEYSTATION		PVF		VS	
<b>Match report</b>		<b>Orlando Valkyries 3 1 Columbus Fury</b>		Set	Duration	Partial score	Score
Match ORL-COL		Date 16/02/2024		1	00:26	3-8 18-16 15-21	25-27
Hall City		Time 22:41		2	00:38	5-8 16-14 21-17	25-22
Spectators		Receipts		3	00:25	7-8 16-14 21-17	25-20
Referee				4	00:25	8-1 16-9 21-9	25-11

Orlando Valkyries	Set					Points			Serve			Reception			Attack			BK		
	1	2	3	4	5	Tot	BP	W-L	Tot	Err	Pts	Tot	Err	Posk	(Exc%)	Tot	Err		Blo	Pts
03 Evans Melissa																				
05 L Murphy Georgia																				
08 Cruz Auna																				
09 White M'Kaela	3	1	1	1	1	6.5	11	2	+8	11	2	1	1	100%	8	1	1	82%	3	
10 Gillen Jill	5	3	3	3	3	6.3	12	7	+6	14	3	1	1	73%	23	2	1	62%	3	
11 Brown Kazmier	6	4	4	4	4	7.1	17	7	+12	13	2	1	1	42%	18	3	12	67%	5	
12 Rivera Wilma	1	5	5	5	5	5.6	8	5	+5	15	3	4	1	100%	6	1	3	50%	1	
13 Williams Kaylah																				
14 Anoa Adara	2	6	6	6	6	6.2	15	11	+3	11	3	1	1	85%	55%	51	3	1	50%	3
15 Joseph Sha'nah	4	2	2	2	2	6	5	3	-1	17	3	1	1	100%	18	2	3	17%	2	
18 Skjodi Carly																				
19 Hansen Abby																				
28 Geeme Paula																				
22 Graham Carly																				
<b>Players total</b>						<b>73</b>	<b>34</b>	<b>+38</b>	<b>99</b>	<b>16</b>	<b>67</b>	<b>22</b>	<b>68%</b>	<b>141%</b>	<b>136</b>	<b>10</b>	<b>4</b>	<b>66</b>	<b>41%</b>	<b>11</b>

Coach undefined undefined  
 Assistant undefined undefined  
 Set 1 1 14 3 7 26 8 1 21 68% (41%) 36 3 1 14 37% 3  
 Set 2 3 12 2 8 24 4 3 17 71% (47%) 35 4 1 12 34% 2  
 Set 3 1 14 3 7 25 6 1 16 1 75% (56%) 37 1 1 14 38% 3  
 Set 4 1 16 3 5 24 1 12 1 83% (58%) 26 2 1 16 62% 3

Columbus Fury	Set					Points			Serve			Reception			Attack			BK		
	1	2	3	4	5	Tot	BP	W-L	Tot	Err	Pts	Tot	Err	Posk	(Exc%)	Tot	Err		Blo	Pts
01 Jones Rainelle																				
02 Santos Rymariely	5	1	4	4	4	5.4	2	1	+2	8	1	1	1	77%	5	2	1	50%	1	
03 Leon Valeria															13%					
06 Schlegel Maria Priscilla	1	2	5	5	5	5.5	4	2	-3	13	1	1	1	18%	3	56%	2	28%	1	
07 O'Neal Asia																				
08 Cooper Reagan	4	5	5	5	5	5.5	18	5	+3	6	1	1	1	25%	3	36%	2	29%	1	
09 Drechsel Samantha	3	4	5	5	5	5.5	3	2	+2	4	1	1	1	19%	1	1	1	5	25%	
10 Wenz Ashley																				
15 Ortiz De Jesus Ivania																				
16 Rosenthal Jenna																				
17 Courtney Lush Megan																				
18 Moore Jenaiya																				
23 Hord Kaitlyn	2	6	3	3	3	6.3	9	5	+7	6	1	1	1	14%	1	1	1	57%	1	
31 Blossom Gabrielle																				
<b>Players total</b>						<b>50</b>	<b>15</b>	<b>+9</b>	<b>81</b>	<b>14</b>	<b>2</b>	<b>80</b>	<b>6</b>	<b>54%</b>	<b>130</b>	<b>10</b>	<b>11</b>	<b>44</b>	<b>34%</b>	<b>4</b>

Coach undefined undefined  
 Assistant undefined undefined  
 Set 1 1 13 1 12 26 4 1 18 1 67% (22%) 32 1 3 13 41% 1  
 Set 2 2 12 1 8 23 6 1 20 3 48% (49%) 36 2 2 13 35% 1  
 Set 3 1 11 7 20 4 1 19 1 47% (32%) 33 2 3 13 31% 1  
 Set 4 1 16 3 5 24 1 12 1 83% (58%) 26 2 1 16 62% 3

Orlando Valkyries		Columbus Fury	
Points	67	61	61
Sin Diff	67	16	16
Reception	67	61	61
Points SO	67	16	16
Each 1.72 receptions	6	3	3
1 Point	4	3	3
+3	4	3	3
0	4	3	3
+2	3	3	3
+1	3	3	3
+3	1	1	1
1 Break point			

BP Break point  
 Er Errors  
 Pts Points  
 W-L Win-Loss  
 Bk Blocked  
 Exc Excellent  
 Sub Substitute  
 Sln Starting lineup  
 Srv Starting serve  
 Stn Starting setter

## Match 3: Columbus Fury 3, Omaha Supernovas 1

22/02/2024		VOLLEYSTATION		PVF		VS	
<b>Match report</b>		<b>Columbus Fury 3 1 Omaha Supernovas</b>		Set	Duration	Partial score	Score
Match COL-OMA		Date 21/02/2024		1	00:25	8-4 16-9 21-10	25-12
Hall City		Time 23:20		2	00:28	8-7 16-13 21-17	

# Season Box Scores

## Match 5: Columbus Fury 3, Vegas Thrill 1

## Match 6: Columbus Fury 3, Orlando Valkyries 2

27/02/2024		VOLLEYSTATION										PVF																																																																																																																																																																																																																				
Match report		Columbus Fury 3 1 Vegas Thrill										Set Duration Partial score Score																																																																																																																																																																																																																				
Match COL-LAV	Date 26/02/2024	Spectators		Time 19:00		Recepts		Set		Duration		Partial score		Score																																																																																																																																																																																																																		
Hall	City	Recepts		Set		Duration		Partial score		Score		Set		Score																																																																																																																																																																																																																		
Columbus Fury		<table border="1"> <thead> <tr> <th>Set</th> <th>1</th> <th>2</th> <th>3</th> <th>4</th> <th>5</th> <th>Vote</th> <th>Points</th> <th>Serve</th> <th>Reception</th> <th>Attack</th> <th>BK</th> </tr> <tr> <th></th> <th>BP</th> <th>W-L</th> <th>Tot Err</th> <th>Pts</th> <th>Post (Exc)</th> <th>Tot Err</th> <th>Blo Pts</th> <th>Pts</th> <th>Pts</th> <th>Pts</th> <th>Pts</th> </tr> </thead> <tbody> <tr> <td>01 Jones Rainelle</td> <td>5</td> <td>5</td> <td>6</td> <td>4</td> <td>8</td> <td>1</td> <td>1</td> <td>100%</td> <td>(9%)</td> <td>19</td> <td>7</td> <td>54%</td> </tr> <tr> <td>02 Santos Raimariely</td> <td>6</td> <td>5</td> <td>6</td> <td>6</td> <td>2</td> <td>4</td> <td>3</td> <td>15</td> <td>1</td> <td>5</td> <td>2</td> <td>40%</td> </tr> <tr> <td>03 L Leon Valeria</td> <td>5</td> <td>5</td> <td>5</td> <td>9</td> <td>1</td> <td>1</td> <td>17</td> <td>65%</td> <td>(59%)</td> <td>1</td> <td>1</td> <td>20%</td> </tr> <tr> <td>06 Schlegel Maria Priscilla</td> <td>1</td> <td>1</td> <td>1</td> <td>1</td> <td>1</td> <td>1</td> <td>5</td> <td>1</td> <td>40%</td> <td>(49%)</td> <td>5</td> <td>1</td> <td>20%</td> </tr> <tr> <td>07 O'Neal Asia</td> <td>4</td> <td>4</td> <td>4</td> <td>4</td> <td>4</td> <td>1</td> <td>1</td> <td>38</td> <td>5</td> <td>29%</td> <td>(21%)</td> <td>5</td> <td>1</td> <td>21</td> </tr> <tr> <td>08 Cooper Reagan</td> <td>4</td> <td>4</td> <td>4</td> <td>4</td> <td>4</td> <td>1</td> <td>1</td> <td>38</td> <td>5</td> <td>29%</td> <td>(21%)</td> <td>5</td> <td>1</td> <td>21</td> </tr> <tr> <td>09 Drechsel Samantha</td> <td>3</td> <td>3</td> <td>3</td> <td>3</td> <td>3</td> <td>1</td> <td>1</td> <td>27</td> <td>1</td> <td>3</td> <td>9</td> <td>33%</td> </tr> <tr> <td>13 Wenz Ashley</td> <td>5</td> <td>5</td> <td>5</td> <td>5</td> <td>5</td> <td>1</td> <td>1</td> <td>8</td> <td>1</td> <td>1</td> <td>1</td> <td>33%</td> </tr> <tr> <td>15 Ortiz DeJesus Ivania</td> <td>5</td> <td>5</td> <td>5</td> <td>5</td> <td>5</td> <td>1</td> <td>1</td> <td>8</td> <td>1</td> <td>1</td> <td>1</td> <td>33%</td> </tr> <tr> <td>16 Rosenthal Jenna</td> <td>5</td> <td>5</td> <td>5</td> <td>5</td> <td>5</td> <td>1</td> <td>1</td> <td>8</td> <td>1</td> <td>1</td> <td>1</td> <td>33%</td> </tr> <tr> <td>17 Courtney Lush Megan</td> <td>5</td> <td>5</td> <td>5</td> <td>5</td> <td>5</td> <td>1</td> <td>1</td> <td>8</td> <td>1</td> <td>1</td> <td>1</td> <td>33%</td> </tr> <tr> <td>18 Moore Jenaiyaa</td> <td>5</td> <td>5</td> <td>5</td> <td>5</td> <td>5</td> <td>1</td> <td>1</td> <td>8</td> <td>1</td> <td>1</td> <td>1</td> <td>33%</td> </tr> <tr> <td>23 Hord Kaitlyn</td> <td>5</td> <td>5</td> <td>5</td> <td>5</td> <td>5</td> <td>1</td> <td>1</td> <td>8</td> <td>1</td> <td>1</td> <td>1</td> <td>33%</td> </tr> <tr> <td>31 Blossom Gabrielle</td> <td>5</td> <td>5</td> <td>5</td> <td>5</td> <td>5</td> <td>1</td> <td>1</td> <td>8</td> <td>1</td> <td>1</td> <td>1</td> <td>33%</td> </tr> </tbody> </table>										Set	1	2	3	4	5	Vote	Points	Serve	Reception	Attack	BK		BP	W-L	Tot Err	Pts	Post (Exc)	Tot Err	Blo Pts	Pts	Pts	Pts	Pts	01 Jones Rainelle	5	5	6	4	8	1	1	100%	(9%)	19	7	54%	02 Santos Raimariely	6	5	6	6	2	4	3	15	1	5	2	40%	03 L Leon Valeria	5	5	5	9	1	1	17	65%	(59%)	1	1	20%	06 Schlegel Maria Priscilla	1	1	1	1	1	1	5	1	40%	(49%)	5	1	20%	07 O'Neal Asia	4	4	4	4	4	1	1	38	5	29%	(21%)	5	1	21	08 Cooper Reagan	4	4	4	4	4	1	1	38	5	29%	(21%)	5	1	21	09 Drechsel Samantha	3	3	3	3	3	1	1	27	1	3	9	33%	13 Wenz Ashley	5	5	5	5	5	1	1	8	1	1	1	33%	15 Ortiz DeJesus Ivania	5	5	5	5	5	1	1	8	1	1	1	33%	16 Rosenthal Jenna	5	5	5	5	5	1	1	8	1	1	1	33%	17 Courtney Lush Megan	5	5	5	5	5	1	1	8	1	1	1	33%	18 Moore Jenaiyaa	5	5	5	5	5	1	1	8	1	1	1	33%	23 Hord Kaitlyn	5	5	5	5	5	1	1	8	1	1	1	33%	31 Blossom Gabrielle	5	5	5	5	5	1	1	8	1	1	1	33%	<b>76 34 +48</b> <b>96 3 2 82 8 40% (27%)</b> <b>173 9 8 64 37% 10</b>	
Set	1	2	3	4	5	Vote	Points	Serve	Reception	Attack	BK																																																																																																																																																																																																																					
	BP	W-L	Tot Err	Pts	Post (Exc)	Tot Err	Blo Pts	Pts	Pts	Pts	Pts																																																																																																																																																																																																																					
01 Jones Rainelle	5	5	6	4	8	1	1	100%	(9%)	19	7	54%																																																																																																																																																																																																																				
02 Santos Raimariely	6	5	6	6	2	4	3	15	1	5	2	40%																																																																																																																																																																																																																				
03 L Leon Valeria	5	5	5	9	1	1	17	65%	(59%)	1	1	20%																																																																																																																																																																																																																				
06 Schlegel Maria Priscilla	1	1	1	1	1	1	5	1	40%	(49%)	5	1	20%																																																																																																																																																																																																																			
07 O'Neal Asia	4	4	4	4	4	1	1	38	5	29%	(21%)	5	1	21																																																																																																																																																																																																																		
08 Cooper Reagan	4	4	4	4	4	1	1	38	5	29%	(21%)	5	1	21																																																																																																																																																																																																																		
09 Drechsel Samantha	3	3	3	3	3	1	1	27	1	3	9	33%																																																																																																																																																																																																																				
13 Wenz Ashley	5	5	5	5	5	1	1	8	1	1	1	33%																																																																																																																																																																																																																				
15 Ortiz DeJesus Ivania	5	5	5	5	5	1	1	8	1	1	1	33%																																																																																																																																																																																																																				
16 Rosenthal Jenna	5	5	5	5	5	1	1	8	1	1	1	33%																																																																																																																																																																																																																				
17 Courtney Lush Megan	5	5	5	5	5	1	1	8	1	1	1	33%																																																																																																																																																																																																																				
18 Moore Jenaiyaa	5	5	5	5	5	1	1	8	1	1	1	33%																																																																																																																																																																																																																				
23 Hord Kaitlyn	5	5	5	5	5	1	1	8	1	1	1	33%																																																																																																																																																																																																																				
31 Blossom Gabrielle	5	5	5	5	5	1	1	8	1	1	1	33%																																																																																																																																																																																																																				
Coach undefined undefined		Set 1 - 16 1 8 25 2 - 19 2 42% (42%) 43 2 - 16 37% 1										Set 2 - 14 3 4 22 1 - 22 2 41% (14%) 37 1 4 14 38% 3		Set 3 - 17 2 5 25 1 1 - 18 1 58% (39%) 47 5 2 17 36% 2		Set 4 - 17 4 4 24 - 23 3 38% (17%) 46 1 2 17 37% 4																																																																																																																																																																																																																
Assistant undefined undefined		Set 1 - 16 1 8 25 2 - 19 2 42% (42%) 43 2 - 16 37% 1										Set 2 - 14 3 4 22 1 - 22 2 41% (14%) 37 1 4 14 38% 3		Set 3 - 17 2 5 25 1 1 - 18 1 58% (39%) 47 5 2 17 36% 2		Set 4 - 17 4 4 24 - 23 3 38% (17%) 46 1 2 17 37% 4																																																																																																																																																																																																																
Columbus Fury		<table border="1"> <thead> <tr> <th>Set</th> <th>1</th> <th>2</th> <th>3</th> <th>4</th> <th>5</th> <th>Vote</th> <th>Points</th> <th>Serve</th> <th>Reception</th> <th>Attack</th> <th>BK</th> </tr> <tr> <th></th> <th>BP</th> <th>W-L</th> <th>Tot Err</th> <th>Pts</th> <th>Post (Exc)</th> <th>Tot Err</th> <th>Blo Pts</th> <th>Pts</th> <th>Pts</th> <th>Pts</th> <th>Pts</th> </tr> </thead> <tbody> <tr> <td>01 Bell Khat</td> <td>8</td> <td>5</td> <td>1</td> <td>1</td> <td>1</td> <td>1</td> <td>1</td> <td>3</td> <td>1</td> <td>1</td> <td>0%</td> </tr> <tr> <td>04 L. Murr Kyle</td> <td>5</td> <td>5</td> <td>5</td> <td>5</td> <td>5</td> <td>1</td> <td>1</td> <td>26</td> <td>1</td> <td>62%</td> <td>(46%)</td> </tr> <tr> <td>05 McCape Molly</td> <td>6</td> <td>6</td> <td>6</td> <td>6</td> <td>6</td> <td>1</td> <td>1</td> <td>26</td> <td>1</td> <td>13</td> <td>50%</td> </tr> <tr> <td>06 Glass Childress Alisha</td> <td>1</td> <td>1</td> <td>1</td> <td>1</td> <td>1</td> <td>1</td> <td>1</td> <td>8%</td> <td>(8%)</td> <td>3</td> <td>33%</td> </tr> <tr> <td>07 Van Buskirk Layne</td> <td>5</td> <td>5</td> <td>5</td> <td>5</td> <td>5</td> <td>1</td> <td>1</td> <td>8</td> <td>1</td> <td>1</td> <td>33%</td> </tr> <tr> <td>08 Kalamitovsk Janet</td> <td>5</td> <td>5</td> <td>5</td> <td>5</td> <td>5</td> <td>1</td> <td>1</td> <td>8</td> <td>1</td> <td>1</td> <td>33%</td> </tr> <tr> <td>10 Prieto-Cerame Paulina</td> <td>5</td> <td>5</td> <td>5</td> <td>5</td> <td>5</td> <td>1</td> <td>1</td> <td>8</td> <td>1</td> <td>1</td> <td>33%</td> </tr> <tr> <td>11 Maddux Hannah</td> <td>2</td> <td>2</td> <td>2</td> <td>2</td> <td>2</td> <td>1</td> <td>1</td> <td>31</td> <td>1</td> <td>45%</td> <td>(26%)</td> </tr> <tr> <td>12 Obaid Berkeley</td> <td>3</td> <td>3</td> <td>3</td> <td>3</td> <td>3</td> <td>1</td> <td>1</td> <td>8%</td> <td>(8%)</td> <td>23</td> <td>1</td> <td>10</td> </tr> <tr> <td>15 Gonzalez Gabby</td> <td>5</td> <td>5</td> <td>5</td> <td>5</td> <td>5</td> <td>1</td> <td>1</td> <td>32</td> <td>1</td> <td>47%</td> <td>(25%)</td> </tr> <tr> <td>19 Sauer Kenna</td> <td>5</td> <td>5</td> <td>5</td> <td>5</td> <td>5</td> <td>1</td> <td>1</td> <td>8</td> <td>1</td> <td>1</td> <td>33%</td> </tr> <tr> <td>21 Havill Anisee</td> <td>5</td> <td>5</td> <td>5</td> <td>5</td> <td>5</td> <td>1</td> <td>1</td> <td>8</td> <td>1</td> <td>1</td> <td>33%</td> </tr> <tr> <td>24 Jemison Meghan</td> <td>5</td> <td>5</td> <td>5</td> <td>5</td> <td>5</td> <td>1</td> <td>1</td> <td>8</td> <td>1</td> <td>1</td> <td>33%</td> </tr> <tr> <td>91 Hippe Saskia</td> <td>5</td> <td>5</td> <td>5</td> <td>5</td> <td>5</td> <td>1</td> <td>1</td> <td>8</td> <td>1</td> <td>1</td> <td>33%</td> </tr> </tbody> </table>										Set	1	2	3	4	5	Vote	Points	Serve	Reception	Attack	BK		BP	W-L	Tot Err	Pts	Post (Exc)	Tot Err	Blo Pts	Pts	Pts	Pts	Pts	01 Bell Khat	8	5	1	1	1	1	1	3	1	1	0%	04 L. Murr Kyle	5	5	5	5	5	1	1	26	1	62%	(46%)	05 McCape Molly	6	6	6	6	6	1	1	26	1	13	50%	06 Glass Childress Alisha	1	1	1	1	1	1	1	8%	(8%)	3	33%	07 Van Buskirk Layne	5	5	5	5	5	1	1	8	1	1	33%	08 Kalamitovsk Janet	5	5	5	5	5	1	1	8	1	1	33%	10 Prieto-Cerame Paulina	5	5	5	5	5	1	1	8	1	1	33%	11 Maddux Hannah	2	2	2	2	2	1	1	31	1	45%	(26%)	12 Obaid Berkeley	3	3	3	3	3	1	1	8%	(8%)	23	1	10	15 Gonzalez Gabby	5	5	5	5	5	1	1	32	1	47%	(25%)	19 Sauer Kenna	5	5	5	5	5	1	1	8	1	1	33%	21 Havill Anisee	5	5	5	5	5	1	1	8	1	1	33%	24 Jemison Meghan	5	5	5	5	5	1	1	8	1	1	33%	91 Hippe Saskia	5	5	5	5	5	1	1	8	1	1	33%	<b>76 29 +45</b> <b>93 11 8 93 2 48% (38%)</b> <b>175 8 10 68 34% 8</b>																			
Set	1	2	3	4	5	Vote	Points	Serve	Reception	Attack	BK																																																																																																																																																																																																																					
	BP	W-L	Tot Err	Pts	Post (Exc)	Tot Err	Blo Pts	Pts	Pts	Pts	Pts																																																																																																																																																																																																																					
01 Bell Khat	8	5	1	1	1	1	1	3	1	1	0%																																																																																																																																																																																																																					
04 L. Murr Kyle	5	5	5	5	5	1	1	26	1	62%	(46%)																																																																																																																																																																																																																					
05 McCape Molly	6	6	6	6	6	1	1	26	1	13	50%																																																																																																																																																																																																																					
06 Glass Childress Alisha	1	1	1	1	1	1	1	8%	(8%)	3	33%																																																																																																																																																																																																																					
07 Van Buskirk Layne	5	5	5	5	5	1	1	8	1	1	33%																																																																																																																																																																																																																					
08 Kalamitovsk Janet	5	5	5	5	5	1	1	8	1	1	33%																																																																																																																																																																																																																					
10 Prieto-Cerame Paulina	5	5	5	5	5	1	1	8	1	1	33%																																																																																																																																																																																																																					
11 Maddux Hannah	2	2	2	2	2	1	1	31	1	45%	(26%)																																																																																																																																																																																																																					
12 Obaid Berkeley	3	3	3	3	3	1	1	8%	(8%)	23	1	10																																																																																																																																																																																																																				
15 Gonzalez Gabby	5	5	5	5	5	1	1	32	1	47%	(25%)																																																																																																																																																																																																																					
19 Sauer Kenna	5	5	5	5	5	1	1	8	1	1	33%																																																																																																																																																																																																																					
21 Havill Anisee	5	5	5	5	5	1	1	8	1	1	33%																																																																																																																																																																																																																					
24 Jemison Meghan	5	5	5	5	5	1	1	8	1	1	33%																																																																																																																																																																																																																					
91 Hippe Saskia	5	5	5	5	5	1	1	8	1	1	33%																																																																																																																																																																																																																					
Coach undefined undefined		Set 1 - 2 15 - 6 23 4 2 23 - 57% (43%) 44 2 1 15 34% 1										Set 2 - 17 2 4 25 3 2 22 - 27% (22%) 39 1 3 17 44% 4		Set 3 - 11 2 7 21 3 1 - 24 1 58% (21%) 47 2 1 11 23% 2		Set 4 - 3 17 2 1 24 3 1 - 28 1 58% (33%) 45 3 4 17 38% 2																																																																																																																																																																																																																
Assistant undefined undefined		Set 1 - 2 15 - 6 23 4 2 23 - 57% (43%) 44 2 1 15 34% 1										Set 2 - 17 2 4 25 3 2 22 - 27% (22%) 39 1 3 17 44% 4		Set 3 - 11 2 7 21 3 1 - 24 1 58% (21%) 47 2 1 11 23% 2		Set 4 - 3 17 2 1 24 3 1 - 28 1 58% (33%) 45 3 4 17 38% 2																																																																																																																																																																																																																

03/03/2024		VOLLEYSTATION										PVF																																																																																																																																																																																																		
Match report		Orlando Valkyries 2 3 Columbus Fury										Set Duration Partial score Score																																																																																																																																																																																																		
Match ORL-COL-1	Date 02/03/2024	Spectators		Time 19:00		Recepts		Set		Duration		Partial score		Score																																																																																																																																																																																																
Hall	City	Recepts		Set		Duration		Partial score		Score		Set		Score																																																																																																																																																																																																
Orlando Valkyries		<table border="1"> <thead> <tr> <th>Set</th> <th>1</th> <th>2</th> <th>3</th> <th>4</th> <th>5</th> <th>Vote</th> <th>Points</th> <th>Serve</th> <th>Reception</th> <th>Attack</th> <th>BK</th> </tr> <tr> <th></th> <th>BP</th> <th>W-L</th> <th>Tot Err</th> <th>Pts</th> <th>Post (Exc)</th> <th>Tot Err</th> <th>Blo Pts</th> <th>Pts</th> <th>Pts</th> <th>Pts</th> <th>Pts</th> </tr> </thead> <tbody> <tr> <td>03 Evans Melissa</td> <td>5</td> <td>5</td> <td>5</td> <td>5</td> <td>5</td> <td>1</td> <td>1</td> <td>27</td> <td>3</td> <td>48%</td> <td>(37%)</td> </tr> <tr> <td>05 L. Murr Kyle</td> <td>5</td> <td>5</td> <td>5</td> <td>5</td> <td>5</td> <td>1</td> <td>1</td> <td>46</td> <td>2</td> <td>65%</td> <td>(37%)</td> </tr> <tr> <td>08 Cruz Aurea</td> <td>5</td> <td>5</td> <td>5</td> <td>5</td> <td>5</td> <td>1</td> <td>1</td> <td>8</td> <td>1</td> <td>1</td> <td>33%</td> </tr> <tr> <td>09 White M'Kaella</td> <td>3</td> <td>3</td> <td>3</td> <td>3</td> <td>3</td> <td>1</td> <td>1</td> <td>6</td> <td>1</td> <td>1</td> <td>33%</td> </tr> <tr> <td>10 Gillen Jill</td> <td>5</td> <td>5</td> <td>5</td> <td>5</td> <td>5</td> <td>1</td> <td>1</td> <td>46</td> <td>2</td> <td>65%</td> <td>(37%)</td> </tr> <tr> <td>11 Brown Kaz</td> <td>6</td> <td>6</td> <td>6</td> <td>6</td> <td>6</td> <td>1</td> <td>1</td> <td>100%</td> <td>(100%)</td> <td>21</td> <td>1</td> <td>9</td> </tr> <tr> <td>12 Rivera Wilma</td> <td>1</td> <td>1</td> <td>1</td> <td>1</td> <td>1</td> <td>1</td> <td>1</td> <td>2</td> <td>2</td> <td>2</td> <td>100%</td> </tr> <tr> <td>14 Anas Adria</td> <td>2</td> <td>2</td> <td>2</td> <td>2</td> <td>2</td> <td>1</td> <td>1</td> <td>28</td> <td>1</td> <td>46%</td> <td>(25%)</td> </tr> <tr> <td>15 Joseph Sha'nah</td> <td>4</td> <td>4</td> <td>4</td> <td>4</td> <td>4</td> <td>1</td> <td>1</td> <td>17</td> <td>3</td> <td>1</td> <td>18%</td> </tr> <tr> <td>18 Skjodt Carly</td> <td>5</td> <td>5</td> <td>5</td> <td>5</td> <td>5</td> <td>1</td> <td>1</td> <td>8</td> <td>1</td> <td>1</td> <td>33%</td> </tr> <tr> <td>19 Hansen Abby</td> <td>5</td> <td>5</td> <td>5</td> <td>5</td> <td>5</td> <td>1</td> <td>1</td> <td>8</td> <td>1</td> <td>1</td> <td>33%</td> </tr> <tr> <td>20 Cerame Paula</td> <td>5</td> <td>5</td> <td>5</td> <td>5</td> <td>5</td> <td>1</td> <td>1</td> <td>8</td> <td>1</td> <td>1</td> <td>33%</td> </tr> <tr> <td>21 Tealer Azhali</td> <td>5</td> <td>5</td> <td>5</td> <td>5</td> <td>5</td> <td>1</td> <td>1</td> <td>8</td> <td>1</td> <td>1</td> <td>33%</td> </tr> <tr> <td>22 Graham Gary</td> <td>5</td> <td>5</td> <td>5</td> <td>5</td> <td>5</td> <td>1</td> <td>1</td> <td>8</td> <td>1</td> <td>1</td> <td>33%</td> </tr> </tbody> </table>										Set	1	2	3	4	5	Vote	Points	Serve	Reception	Attack	BK		BP	W-L	Tot Err	Pts	Post (Exc)	Tot Err	Blo Pts	Pts	Pts	Pts	Pts	03 Evans Melissa	5	5	5	5	5	1	1	27	3	48%	(37%)	05 L. Murr Kyle	5	5	5	5	5	1	1	46	2	65%	(37%)	08 Cruz Aurea	5	5	5	5	5	1	1	8	1	1	33%	09 White M'Kaella	3	3	3	3	3	1	1	6	1	1	33%	10 Gillen Jill	5	5	5	5	5	1	1	46	2	65%	(37%)	11 Brown Kaz	6	6	6	6	6	1	1	100%	(100%)	21	1	9	12 Rivera Wilma	1	1	1	1	1	1	1	2	2	2	100%	14 Anas Adria	2	2	2	2	2	1	1	28	1	46%	(25%)	15 Joseph Sha'nah	4	4	4	4	4	1	1	17	3	1	18%	18 Skjodt Carly	5	5	5	5	5	1	1	8	1	1	33%	19 Hansen Abby	5	5	5	5	5	1	1	8	1	1	33%	20 Cerame Paula	5	5	5	5	5	1	1	8	1	1	33%	21 Tealer Azhali	5	5	5	5	5	1	1	8	1	1	33%	22 Graham Gary	5	5	5	5	5	1	1	8	1	1	33%	<b>79 26 +38</b> <b>111 12 2 104 6 56% (34%)</b> <b>193 13 13 83 32% 14</b>	
Set	1	2	3	4	5	Vote	Points	Serve	Reception	Attack	BK																																																																																																																																																																																																			
	BP	W-L	Tot Err	Pts	Post (Exc)	Tot Err	Blo Pts	Pts	Pts	Pts	Pts																																																																																																																																																																																																			
03 Evans Melissa	5	5	5	5	5	1	1	27	3	48%	(37%)																																																																																																																																																																																																			
05 L. Murr Kyle	5	5	5	5	5	1	1	46	2	65%	(37%)																																																																																																																																																																																																			
08 Cruz Aurea	5	5	5	5	5	1	1	8	1	1	33%																																																																																																																																																																																																			
09 White M'Kaella	3	3	3	3	3	1	1	6	1	1	33%																																																																																																																																																																																																			
10 Gillen Jill	5	5	5	5	5	1	1	46	2	65%	(37%)																																																																																																																																																																																																			
11 Brown Kaz	6	6	6	6	6	1	1	100%	(100%)	21	1	9																																																																																																																																																																																																		
12 Rivera Wilma	1	1	1	1	1	1	1	2	2	2	100%																																																																																																																																																																																																			
14 Anas Adria	2	2	2	2	2	1	1	28	1	46%	(25%)																																																																																																																																																																																																			
15 Joseph Sha'nah	4	4	4	4	4	1	1	17	3	1	18%																																																																																																																																																																																																			
18 Skjodt Carly	5	5	5	5	5	1	1	8	1	1	33%																																																																																																																																																																																																			
19 Hansen Abby	5	5	5	5	5	1	1	8	1	1	33%																																																																																																																																																																																																			
20 Cerame Paula	5	5	5	5	5	1	1	8	1	1	33%																																																																																																																																																																																																			
21 Tealer Azhali	5	5	5	5	5	1	1	8	1	1	33%																																																																																																																																																																																																			
22 Graham Gary	5	5	5	5	5	1	1	8	1	1	33%																																																																																																																																																																																																			
Coach undefined undefined		Set 1 - 7 5 5 18 1 2 - 21 3 62% (38%) 33 3 2 7 21% 5										Set 2 - 11 8 2 4 24 3 1 28 - 58% (48%) 58 4 2 18 30% 2		Set 3 - 16 3 9 29 4 - 26 58% (27%) 41 2 5 16 39% 3		Set 4 - 15 2 8 24 3 - 21 57% (43%) 42 3 1 15 36% 2		Set 5 - 1 7 2 5 16 1 1 16 1 58% (19%) 29 1 3 7 24% 2																																																																																																																																																																																												
Assistant undefined undefined		Set 1 - 7 5 5 18 1 2 - 21 3 62% (38%) 33 3 2 7 21% 5										Set 2 - 11 8 2 4 24 3 1 28 - 58% (48%) 58 4 2 18 30% 2		Set 3 - 16 3 9 29 4 - 26 58% (27%) 41 2 5 16 39% 3		Set 4 - 15 2 8 24 3 - 21 57% (43%) 42 3 1 15 36% 2		Set 5 - 1 7 2 5 16 1 1 16 1 58% (19%) 29 1 3 7 24% 2																																																																																																																																																																																												
Columbus Fury		<table border="1"> <thead> <tr> <th>Set</th> <th>1</th> <th>2</th> <th>3</th> <th>4</th> <th>5</th> <th>Vote</th> <th>Points</th> <th>Serve</th> <th>Reception</th> <th>Attack</th> <th>BK</th> </tr> <tr> <th></th> <th>BP</th> <th>W-L</th> <th>Tot Err</th> <th>Pts</th> <th>Post (Exc)</th> <th>Tot Err</th> <th>Blo Pts</th> <th>Pts</th> <th>Pts</th> <th>Pts</th> <th>Pts</th> </tr> </thead> <tbody> <tr> <td>01 Jones Rainelle</td> <td>5</td> <td>5</td> <td>5</td> <td>5</td> <td>5</td> <td>1</td> <td>1</td> <td>11</td> <td>2</td> <td>2</td> <td>1</td> </tr> <tr> <td>02 Santos Raimariely</td> <td>6</td> <td>4</td> <td>5</td> <td>6</td> <td>2</td> <td>4</td> <td>2</td> <td>14</td> <td>1</td> <td>1</td> <td>1</td> </tr> <tr> <td>03 L Leon Valeria</td> <td>5</td> <td>5</td> <td>5</td> <td>5</td> <td>5</td> <td>1</td> <td>1</td> <td>35</td> <td>66%</td> <td>(49%)</td> <td>1</td> </tr> <tr> <td>06 Schlegel Maria Priscilla</td> <td>5</td> <td>5</td> <td>5</td> <td>5</td> <td>5</td> <td>1</td> <td>1</td> <td>8</td> <td>1</td> <td>1</td> <td>33%</td> </tr> <tr> <td>07 O'Neal Asia</td> <td>4</td> <td>4</td> <td>4</td> <td>4</td> <td>4</td> <td>1</td> <td>1</td> <td>33</td> <td>1</td> <td>21%</td> <td>(15%)</td> </tr> <tr> <td>08 Cooper Reagan</td> <td>4</td> <td>4</td> <td>4</td> <td>4</td> <td>4</td> <td>1</td> <td>1</td> <td>33</td> <td>1</td> <td>21%</td> <td>(15%)</td> </tr> <tr> <td>09 Drechsel Samantha</td> <td>3</td> <td>3</td> <td>3</td> <td>3</td> <td>3</td> <td>1</td> <td>1</td> <td>27</td> <td>1</td> <td>3</td> <td>9</td> </tr> <tr> <td>13 Wenz Ashley</td> <td>5</td> <td>5</td> <td>5</td> <td>5</td> <td>5</td> <td>1</td> <td>1</td> <td>30</td> <td>1</td> <td>60%</td> <td>(37%)</td> </tr> <tr> <td>15 Ortiz DeJesus Ivania</td> <td>5</td> <td>5</td> <td>5</td> <td>5</td> <td>5</td> <td>1</td> <td>1</td> <td>6</td> <td>2</td> <td>1</td> <td>1</td> </tr> <tr> <td>16 Rosenthal Jenna</td> <td>5</td> <td>5</td> <td>5</td> <td>5</td> <td>5</td> <td>1</td> <td>1</td> <td>8</td> <td>1</td> <td>1</td> <td>33%</td> </tr> <tr> <td>17 Courtney Lush Megan</td> <td>1</td> <td>1</td> <td>1</td> <td>1</td> <td>1</td> <td>1</td> <td>1</td> <td>30</td> <td>1</td> <td>60%</td> <td>(37%)</td> </tr> <tr> <td>18 Moore Jenaiyaa</td> <td>5</td> <td>5</td> <td>5</td> <td>5</td> <td>5</td> <td>1</td> <td>1</td> <td>8</td> <td>1</td> <td>1</td> <td>33%</td> </tr> <tr> <td>23 Hord Kaitlyn</td> <td>2</td> <td>2</td> <td>2</td> <td>2</td> <td>2</td> <td>1</td> <td>1</td> <td>18</td> <td>1</td> <td>6</td> <td>33%</td> </tr> <tr> <td>31 Blossom Gabrielle</td> <td>5</td> <td>5</td> <td>5</td> <td>5</td> <td>5</td> <td>1</td> <td>1</td> <td>8</td> <td>1</td> <td>1</td> <td>33%</td> </tr> </tbody> </table>										Set	1	2	3	4	5	Vote	Points	Serve	Reception	Attack	BK		BP	W-L	Tot Err	Pts	Post (Exc)	Tot Err	Blo Pts	Pts	Pts	Pts	Pts	01 Jones Rainelle	5	5	5	5	5	1	1	11	2	2	1	02 Santos Raimariely	6	4	5	6	2	4	2	14	1	1	1	03 L Leon Valeria	5	5	5	5	5	1	1	35	66%	(49%)	1	06 Schlegel Maria Priscilla	5	5	5	5	5	1	1	8	1	1	33%	07 O'Neal Asia	4	4	4	4	4	1	1	33	1	21%	(15%)	08 Cooper Reagan	4	4	4	4	4	1	1	33	1	21%	(15%)	09 Drechsel Samantha	3	3	3	3	3	1	1	27	1	3	9	13 Wenz Ashley	5	5	5	5	5	1	1	30	1	60%	(37%)	15 Ortiz DeJesus Ivania	5	5	5	5	5	1	1	6	2	1	1	16 Rosenthal Jenna	5	5	5	5	5	1	1	8	1	1	33%	17 Courtney Lush Megan	1	1	1	1	1	1	1	30	1	60%	(37%)	18 Moore Jenaiyaa	5	5	5	5	5	1	1	8	1	1	33%	23 Hord Kaitlyn	2	2	2	2	2	1	1	18	1	6	33%	31 Blossom Gabrielle	5	5	5	5	5	1	1	8	1	1	33%	<b>85 29 +42</b> <b>113 9 6 99 2 48% (33%)</b> <b>192 18 14 66 34% 13</b>		
Set	1	2	3	4	5	Vote	Points	Serve	Reception	Attack	BK																																																																																																																																																																																																			
	BP	W-L	Tot Err	Pts	Post (Exc)	Tot Err	Blo Pts	Pts	Pts	Pts	Pts																																																																																																																																																																																																			
01 Jones Rainelle	5	5	5	5	5	1	1	11	2	2	1																																																																																																																																																																																																			
02 Santos Raimariely	6	4	5	6	2	4	2	14	1	1	1																																																																																																																																																																																																			
03 L Leon Valeria	5	5	5	5	5	1	1	35	66%	(49%)	1																																																																																																																																																																																																			
06 Schlegel Maria Priscilla	5	5	5	5	5	1	1	8	1	1	33%																																																																																																																																																																																																			
07 O'Neal Asia	4	4	4	4	4	1	1	33	1	21%	(15%)																																																																																																																																																																																																			
08 Cooper Reagan	4	4	4	4	4	1	1	33	1	21%	(15%)																																																																																																																																																																																																			
09 Drechsel Samantha	3	3	3	3	3	1	1	27	1	3	9																																																																																																																																																																																																			
13 Wenz Ashley	5	5	5	5	5	1	1	30	1	60%	(37%)																																																																																																																																																																																																			
15 Ortiz DeJesus Ivania	5	5	5	5	5	1	1	6	2	1	1																																																																																																																																																																																																			
16 Rosenthal Jenna	5	5	5	5	5	1	1	8	1	1	33%																																																																																																																																																																																																			
17 Courtney Lush Megan	1	1	1	1	1	1	1	30	1	60%	(37%)																																																																																																																																																																																																			
18 Moore Jenaiyaa	5	5	5	5	5	1	1	8	1	1	33%																																																																																																																																																																																																			
23 Hord Kaitlyn	2	2	2	2	2	1	1	18	1	6	33%																																																																																																																																																																																																			
31 Blossom Gabrielle	5	5	5	5	5	1	1	8	1	1	33%																																																																																																																																																																																																			
Coach undefined undefined		Set 1 - 3 16 2 4 24 3 3 17 - 53% (29%) 36 1 5 16 44% 2										Set 2 - 12 5 7 22 2 - 21 1 52% (33%) 38 1 2 12 32% 2		Set 3 - 2 16 5 7 29 3 2 25 - 36% (28%) 42 5 3 16 38% 5		Set 4 - 13 1 7 22 1 - 21 38% (19%) 48 6 2 13 23% 1		Set 5 - 1 9 3 4 16 - 1 15 1 75% (67%) 26 5 2 9 23% 3																																																																																																																																																																																												
Assistant undefined undefined		Set 1 - 3 16 2 4 24 3 3 17 - 53% (29%) 36 1 5 16 44% 2										Set 2 - 12 5 7 22 2 - 21 1 52% (33%) 38 1 2 12 32% 2		Set 3 - 2 16 5 7 29 3 2 25 - 36% (28%) 42 5 3 16 38% 5		Set 4 - 13 1 7 22 1 - 21 38% (19%) 48 6 2 13 23% 1		Set 5 - 1 9 3 4 16 - 1 15 1 75% (67%) 26 5 2 9 23% 3																																																																																																																																																																																												

## Match 7: Columbus Fury 1, Grand Rapids Rise 3

## Match 8: Columbus Fury 1, Vegas Thrill 3

09/03/2024		VOLLEYSTATION										DEMO-SEASON																																																																																																																																																																																																																
Match report		Grand Rapids Rise 3 1 Columbus Fury										Set Duration Partial score Score																																																																																																																																																																																																																
Match GRR-COL	Date 09/03/2024	Spectators		Time 18:00		Recepts		Set		Duration		Partial score		Score																																																																																																																																																																																																														
Hall	City	Recepts		Set		Duration		Partial score		Score		Set		Score																																																																																																																																																																																																														
Grand Rapids Rise		<table border="1"> <thead> <tr> <th>Set</th> <th>1</th> <th>2</th> <th>3</th> <th>4</th> <th>5</th> <th>Vote</th> <th>Points</th> <th>Serve</th> <th>Reception</th> <th>Attack</th> <th>BK</th> </tr> <tr> <th></th> <th>BP</th> <th>W-L</th> <th>Tot Err</th> <th>Pts</th> <th>Post (Exc)</th> <th>Tot Err</th> <th>Blo Pts</th> <th>Pts</th> <th>Pts</th> <th>Pts</th> <th>Pts</th> </tr> </thead> <tbody> <tr> <td>01 Bell Khat</td> <td>3</td> <td>3</td> <td>3</td> <td>3</td> <td>3</td> <td>1</td> <td>1</td> <td>2</td> <td>1</td> <td>1</td> <td>50%</td> </tr> <tr> <td>04 Findlay Morganth</td> <td>5</td> <td>5</td> <td>5</td> <td>5</td> <td>5</td> <td>1</td> <td>1</td> <td>4</td> <td>3</td> <td>0%</td> </tr> <tr> <td>05 Pinched Erika</td> <td>5</td> <td>5</td> <td>5</td> <td>5</td> <td>5</td> <td>1</td> <td>1</td> <td>8</td> <td>1</td> <td>1</td> <td>33%</td> </tr> <tr> <td>07 Grant Nia</td> <td>5</td> <td>5</td> <td>5</td> <td>5</td> <td>5</td> <td>1</td> <td>1</td> <td>8</td> <td>1</td> <td>1</td> <td>33%</td> </tr> <tr> <td>08 Grote Marin</td> <td>6</td> <td>6</td> <td>6</td> <td>6</td> <td>6</td> <td>1</td> <td>1</td> <td>18</td> <td>3</td> <td>7</td> <td>39%</td> </tr> <tr> <td>09 Chausse Claire</td> <td>2</td> <td>2</td> <td>2</td> <td>2</td> <td>2</td> <td>1</td> <td>1</td> <td>34</td> <td>62%</td> <td>(24%)</td> <td>46</td> <td>3</td> <td>27</td> </tr> <tr> <td>10 Scully Shannon</td> <td>5</td> <td>5</td> <td>5</td> <td>5</td> <td>5</td> <td>1</td> <td>1</td> <td>12</td> <td>1</td> <td>33%</td> <td>(31%)</td> </tr> <tr> <td>12 L. Sponal Sarah</td> <td>5</td> <td>5</td> <td>5</td> <td>5</td> <td>5</td> <td>1</td> <td>1</td> <td>16</td> <td>63%</td> <td>(31%)</td> <td>1</td> <td>1</td> <td>33%</td> </tr> <tr> <td>13 Wenz Ashley</td> <td>1</td> <td>1</td> <td>1</td> <td>1</td> <td>1</td> <td>1</td> <td>1</td> <td>4</td> <td>1</td> <td>1</td> <td>33%</td> </tr> <tr> <td>14 Dimitrova Emilija</td> <td>4</td> <td>4</td> <td>4</td> <td>4</td> <td>4</td> <td>1</td> <td>1</td> <td>48</td> <td>3</td> <td>14</td> <td>33%</td> </tr> <tr> <td>15 Podvas Mac</td> <td>5</td> <td>5</td> <td>5</td> <td>5</td> <td>5</td> <td>1</td> <td>1</td> <td>8</td> <td>1</td> <td>1</td> <td>33%</td> </tr> <tr> <td>17 Courtney Lush Megan</td> <td>5</td> <td>5</td> <td>5</td> <td>5</td> <td>5</td> <td>1</td> <td>1</td> <td>8</td> <td>1</td> <td>1</td> <td>33%</td> </tr> <tr> <td>18 Moore Jenaiyaa</td> <td>5</td> <td>5</td> <td>5</td> <td>5</td> <td>5</td> <td>1</td> <td>1</td> <td>8</td> <td>1</td> <td>1</td> <td>33%</td> </tr> <tr> <td>23 Hord Kaitlyn</td> <td>5</td> <td>5</td> <td>5</td> <td>5</td> <td>5</td> <td>1</td> <td>1</td> <td>8</td> <td>1</td> <td>1</td> <td>33%</td> </tr> <tr> <td>31 Gomez Camila</td> <td>5</td> <td>5</td> <td>5</td> <td>5</td> <td>5</td> <td>1</td> <td>1</td> <td>8</td> <td>1</td> <td>1</td> <td>33%</td> </tr> </tbody> </table>										Set	1	2	3	4	5	Vote	Points	Serve	Reception	Attack	BK		BP	W-L	Tot Err	Pts	Post (Exc)	Tot Err	Blo Pts	Pts	Pts	Pts	Pts	01 Bell Khat	3	3	3	3	3	1	1	2	1	1	50%	04 Findlay Morganth	5	5	5	5	5	1	1	4	3	0%	05 Pinched Erika	5	5	5	5	5	1	1	8	1	1	33%	07 Grant Nia	5	5	5	5	5	1	1	8	1	1	33%	08 Grote Marin	6	6	6	6	6	1	1	18	3	7	39%	09 Chausse Claire	2	2	2	2	2	1	1	34	62%	(24%)	46	3	27	10 Scully Shannon	5	5	5	5	5	1	1	12	1	33%	(31%)	12 L. Sponal Sarah	5	5	5	5	5	1	1	16	63%	(31%)	1	1	33%	13 Wenz Ashley	1	1	1	1	1	1	1	4	1	1	33%	14 Dimitrova Emilija	4	4	4	4	4	1	1	48	3	14	33%	15 Podvas Mac	5	5	5	5	5	1	1	8	1	1	33%	17 Courtney Lush Megan	5	5	5	5	5	1	1	8	1	1	33%	18 Moore Jenaiyaa	5	5	5	5	5	1	1	8	1	1	33%	23 Hord Kaitlyn	5	5	5	5	5	1	1	8	1	1	33%	31 Gomez Camila	5	5	5	5	5	1	1	8	1	1	33%	<b>64 28 +22</b> <b>72 8 5 63% (19%)</b> <b>139 9 12 47 34% 15</b>	
Set	1	2	3	4	5	Vote	Points	Serve	Reception	Attack	BK																																																																																																																																																																																																																	
	BP	W-L	Tot Err	Pts	Post (Exc)	Tot Err	Blo Pts	Pts	Pts	Pts	Pts																																																																																																																																																																																																																	
01 Bell Khat	3	3	3	3	3	1	1	2	1	1	50%																																																																																																																																																																																																																	
04 Findlay Morganth	5	5	5	5	5	1	1	4	3	0%																																																																																																																																																																																																																		
05 Pinched Erika	5	5	5	5	5	1	1	8	1	1	33%																																																																																																																																																																																																																	
07 Grant Nia	5	5	5	5	5	1	1	8	1	1	33%																																																																																																																																																																																																																	
08 Grote Marin	6	6	6	6	6	1	1	18	3	7	39%																																																																																																																																																																																																																	
09 Chausse Claire	2	2	2	2	2	1	1	34	62%	(24%)	46	3	27																																																																																																																																																																																																															
10 Scully Shannon	5	5	5	5	5	1	1	12	1	33%	(31%)																																																																																																																																																																																																																	
12 L. Sponal Sarah	5	5	5	5	5	1	1	16	63%	(31%)	1	1	33%																																																																																																																																																																																																															
13 Wenz Ashley	1	1	1	1	1	1	1	4	1	1	33%																																																																																																																																																																																																																	
14 Dimitrova Emilija	4	4	4	4	4	1	1	48	3	14	33%																																																																																																																																																																																																																	
15 Podvas Mac	5	5	5	5	5	1	1	8	1	1	33%																																																																																																																																																																																																																	
17 Courtney Lush Megan	5	5	5	5	5	1	1	8	1	1	33%																																																																																																																																																																																																																	
18 Moore Jenaiyaa	5	5	5	5	5	1	1	8	1	1	33%																																																																																																																																																																																																																	
23 Hord Kaitlyn	5	5	5	5	5	1	1	8	1	1	33%																																																																																																																																																																																																																	
31 Gomez Camila	5	5	5	5	5	1	1	8	1	1	33%																																																																																																																																																																																																																	
Coach undefined undefined		Set 1 - 1 9 6 5																																																																																																																																																																																																																										

# Season Box Scores

## Match 9: Columbus Fury 1, Grand Rapids Rise 3

21/03/2024		VOLLEYSTATION										PVF		VS										
Match report		Columbus Fury 1 3 Grand Rapids Rise										Set Duration		Partial score	Score									
Match COL-GRR		Date 20/03/2024										1 00:27		6-8 15-16 17-21	20-25									
Hall		Time 19:00										2 00:24		5-8 12-16 13-21	18-25									
City		Referees										3 00:24		8-6 16-10 21-15	25-19									
		Recepts										4 00:44		7-8 12-16 20-21	30-32									
Columbus Fury		Grand Rapids Rise										Set		Duration	Partial score	Score								
01 Jones Rainelle		1 2 3 4 5										Vote		Tot	BP	W-L	Serve	Reception	Attack	BK				
02 Santos Raimariely		1 1 1 1 1										5.5		4	1	43	8	1	-	-	-	-		
03 L Leon Valeria		1 1 1 1 1										6.1		-	-	-	-	-	-	-	-	-		
06 Schlegel Maria Priscilla		1 1 1 1 1										6.1		-	-	-	-	-	-	-	-	-		
07 O'Neal Asia		1 1 1 1 1										6.1		15	4	48	17	3	1	3	33%	33%		
08 Cooper Reagan		1 1 1 1 1										5.5		10	2	43	15	1	44	1	25%	25%		
09 Drechsel Samantha		1 1 1 1 1										5.5		13	5	42	17	4	1	-	-	-		
12 Stringer Tori		1 1 1 1 1										5.5		6	1	4	1	-	-	-	-	-		
13 Wenz Ashley		1 1 1 1 1										5.5		-	-	-	-	-	-	-	-	-		
15 Ortiz DeJesus Ivania		1 1 1 1 1										5.5		-	-	-	-	-	-	-	-	-		
16 Rosenthal Jenna		1 1 1 1 1										5.5		-	-	-	-	-	-	-	-	-		
17 Courtney Lush Megan		1 1 1 1 1										5.5		11	9	47	14	-	-	-	-	-		
18 Moore Jenajaya		1 1 1 1 1										5.5		-	-	-	-	-	-	-	-	-		
23 Hord Kaitlyn		1 1 1 1 1										8.5		6	2	25	3	-	-	-	-	-		
Players total		70 30 433 100 13 2										80 3 84%		38%	156	12	9	57	37%	11				
Coach undefined undefined		Set 1 1 14 2 3										21		4	1	22	1	41%	14%	37	2	14	37%	
Assistant undefined undefined		Set 2 1 11 1 5										18		3	1	22	-	41%	27%	34	3	7	32%	
		Set 3 1 12 2 11										25		4	-	13	-	38%	115%	31	3	12	39%	
		Set 4 1 18 4 7										30		3	1	30	1	53%	17%	57	5	18	32%	
Grand Rapids Rise		Columbus Fury										Set		Duration	Partial score	Score								
01 Bolding Sydney		1 2 3 4 5										Vote		Tot	BP	W-L	Serve	Reception	Attack	BK				
04 Fingal Morgan		1 1 1 1 1										-		-	-	-	-	-	-	-	-	-		
05 Pritchard Enka		1 1 1 1 1										-		-	-	-	-	-	-	-	-	-	-	
08 Grote Marin		1 1 1 1 1										6		8	5	46	14	1	-	-	-	-		
09 Chaussee Claire		1 1 1 1 1										5.5		17	7	47	21	-	-	-	-	-		
10 Scully Shannon		1 1 1 1 1										5.5		-	-	-	-	-	-	-	-	-		
12 Sponcil Sarah		1 1 1 1 1										6		-	-	-	-	-	-	-	-	-		
13 Evans Ashley		1 1 1 1 1										5.7		3	2	15	1	-	-	-	-	-		
14 Dimitrova Emiliya		1 1 1 1 1										6.7		28	11	48	15	3	-	-	-	-		
15 Podraza Mac		1 1 1 1 1										5.5		-	-	-	-	-	-	-	-	-		
17 Jensen Alyssa		1 1 1 1 1										7		7	3	41	12	4	-	-	-	-		
27 Abbott Symone		1 1 1 1 1										5.5		7	2	-	14	3	-	-	-	-		
28 Caffey Kayla		1 1 1 1 1										-		-	-	-	-	-	-	-	-	-		
31 Gomez Camila		1 1 1 1 1										-		-	-	-	-	-	-	-	-	-		
Players total		70 30 433 100 13 2										80 3 84%		38%	156	12	9	57	37%	11				
Coach undefined undefined		Set 1 1 15 2 7										24		2	1	17	1	47%	24%	31	2	15	48%	
Assistant undefined undefined		Set 2 1 16 3 6										25		3	-	15	1	52%	23%	31	2	16	52%	
		Set 3 1 7 3 9										19		6	-	19	6	-	-	-	-	-	-	
		Set 4 1 19 3 9										32		2	1	27	1	41%	19%	68	4	19	32%	
Columbus Fury		Grand Rapids Rise										Set		Duration	Partial score	Score								
Points		Reception 87										Kill on reception		Reception 88	Points	S in Diff	BP Break point	Er Errors	Pck Positive	Wt. Won-Lost	Pck Points	Bk Blocked	Exc Excellent	
6 +1		Each 1.85 receptions										0		0	0	0	0	0	0	0	0	0	0	0
5 -7		1 Point										1st Attack AFTER POSITIVE RECEPTION (+)		Errors B1o Pts% Tot	Pck Points	Wt. Won-Lost	Pck Points	Bk Blocked	Exc Excellent	Er Errors	Pck Positive	Wt. Won-Lost	Pck Points	
4 +2		1 Point										0		0	0	0	0	0	0	0	0	0	0	
3 +5		Serve 94										1st Attack AFTER NEGATIVE RECEPTION (-)		Errors B1o Pts% Tot	Pck Points	Wt. Won-Lost	Pck Points	Bk Blocked	Exc Excellent	Er Errors	Pck Positive	Wt. Won-Lost	Pck Points	
2 +6		Points BP 20										0		0	0	0	0	0	0	0	0	0	0	
1 -3		Each 4.7 serves										2		3	42%	38	33%	2	1	-	-	-	-	
		1 Break point										Attack on dig		Errors B1o Pts% Tot	Pck Points	Wt. Won-Lost	Pck Points	Bk Blocked	Exc Excellent	Er Errors	Pck Positive	Wt. Won-Lost	Pck Points	
		11 5 26%										82		83	35%	6	5	-	-	-	-	-	-	
		1 Break point										1 Break point		1 Break point	1 +2	-	-	-	-	-	-	-	-	

## Match 10: Columbus Fury 3, Atlanta Vibe 1

24/03/2024		VOLLEYSTATION										PVF24		VS									
Match report		Columbus Fury 3 1 Atlanta Vibe										Set Duration		Partial score	Score								
Match COL-ATL		Date 24/03/2024										1 00:38		3-8 16-14 21-20	25-22								
Hall		Time 19:00										2 00:37		7-8 16-14 21-19	27-29								
City		Referees										3 00:29		8-7 16-14 21-17	25-21								
		Recepts										4 00:31		8-5 12-16 21-28	25-23								
Columbus Fury		Atlanta Vibe										Set		Duration	Partial score	Score							
01 Jones Rainelle		1 2 3 4 5										Vote		Tot	BP	W-L	Serve	Reception	Attack	BK			
02 Santos Raimariely		1 1 1 1 1										5.5		-	-	-	-	-	-	-	-		
03 L Leon Valeria		1 1 1 1 1										5.5		-	-	-	-	-	-	-	-		
04 Bartsch-Hackley Michelle		1 1 1 1 1										5.5		-	-	-	-	-	-	-	-		
07 O'Neal Asia		1 1 1 1 1										6.5		19	6	45	17	2	1	-	-		
08 Cooper Reagan		1 1 1 1 1										5.7		24	6	45	18	2	1	40	1	35%	
09 Drechsel Samantha		1 1 1 1 1										5.5		9	4	22	16	-	-	-	-	-	
12 Stringer Tori		1 1 1 1 1										4.6		1.6	5.6	5	3	45	18	2	-	-	
15 Ortiz DeJesus Ivania		1 1 1 1 1										5.5		-	-	-	-	-	-	-	-	-	
16 Rosenthal Jenna		1 1 1 1 1										6		2	3	41	3	-	-	-	-		
17 Courtney Lush Megan		1 1 1 1 1										5.9		11	6	45	10	-	-	-	-	-	
18 Moore Jenajaya		1 1 1 1 1										-		-	-	-	-	-	-	-	-	-	
23 Hord Kaitlyn		1 1 1 1 1										6.8		9	4	45	11	3	-	-	-	-	
Players total		80 28 446 181 8 4										91 6 46%		14%	169	9	11	65	41%	11			
Coach undefined undefined		Set 1 1 16 2 6										25		3	22	2	45%	9%	43	2	2	16	37%
Assistant undefined undefined		Set 2 1 16 4 6										27		1	27	-	44%	20%	43	3	5	16	37%
		Set 3 1 16 2 7										25		3	-	18	3	44%	6%	32	2	1	50%
		Set 4 2 17 3 3										24		1	24	1	50%	13%	42	2	3	17	40%
Atlanta Vibe		Columbus Fury										Set		Duration	Partial score	Score							
01 Member-Meneh Lektor		1 2 3 4 5										Vote		Tot	BP	W-L	Serve	Reception	Attack	BK			
03 Fanning Shelby		1 1 1 1 1										5.5		6	1	-	-	-	-	-	-	-	
07 Lazareva Anna		1 1 1 1 1										5.9		21	7	43	19	2	-	-	-	-	
08 L Hlapo Kamalie		1 1 1 1 1										-		-	-	-	-	-	-	-	-	-	
09 L Hentz Morgan		1 1 1 1 1										5.5		11	6	42	11	-	-	-	-	-	
13 Edmond Leah		1 1 1 1 1										6.1		21	9	42	17	1	49	2	47%	18%	
14 Bower Whitney		1 1 1 1 1										-		-	-	-	-	-	-	-	-	-	
15 Jehilova Magdalena		1 1 1 1 1										6.3		8	2	45	8	-	-	-	-	-	
16 Watson Karin		1 1 1 1 1										5.5		2	1	-	-	-	-	-	-	-	
17 Linnehan Alli		1 1 1 1																					

# Season Box Scores

## Match 13: Columbus Fury 1, Omaha Supernovas 3

05/04/2024		VOLLEYSTATION		PVF		VS	
<b>Match report</b>							
Omaha Supernovas		<b>3</b>		Columbus Fury		<b>1</b>	
Set	Duration	Partial score		Score			
1	00:26	5-8 16-14 21-18		25-20			
2	00:23	7-8 16-14 21-17		25-22			
3	00:27	5-8 10-16 18-21		21-25			
4	00:31	6-8 16-15 21-18		25-22			
Match		OMA-COL	Date	05/04/2024	Spectators		
Hall			Time	19:00	Receipts		
City			Referees				

Player	Set					Points					Serve					Reception					Attack					BK		
	1	2	3	4	5	BP	W-L	Tot	Err	Pts	Tot	Err	Post	(Exc%)	Tot	Err	Blo	Pts	Pts%	Tot	Err	Post	(Exc%)	Tot	Err		Blo	Pts
01 ValentinAndersson Natalia	3	3	3	1		6.4	4	2	42	20	2	1																
02 Hilley Sydney																												
03 L White Kendall																												
05 Nunweiler Brooke	3	1	1	5		5.9	16	5	47	14	1			11				45%	(6%)	50	3	5	14	28%	2			
06 Dixon Tori	2	2	2	6		5.5	3	1	41	12	1																	
10 Schaben-Lansman Jess																												
11 Vuchkova Hristina	5	5	3	3		5.7	7	2	45	14	1			3				33%	(33%)	13	1	5	38%	1				
13 Briggs Paige																												
14 Kai Reed Nia	6	4	6	4		5.8	17	4	41	15	1																	
15 Mayfield Allison																												
18 De La Cruz Bethania	4	4	4	2		6.3	26	10	42	16	2			44				41%	(23%)	41	2	26	63%					
22 L Thompson Gabby																												
24 Davis Sophie																												
25 Cartwright Maggie																												
<b>Players total</b>						<b>79</b>	<b>24</b>	<b>+46</b>	<b>95</b>	<b>8</b>	<b>2</b>	<b>83</b>	<b>1</b>	<b>40%</b>	<b>(18%)</b>	<b>155</b>	<b>9</b>	<b>66</b>	<b>43%</b>	<b>5</b>								
Coach undefined undefined						Set 1	19	3	1	24	1			21				43%	(29%)	42	5	19	45%					
Assistant: undefined undefined						Set 2	15	2	8	25	2			18	1	44%	(11%)	34	4	15	44%							
						Set 3	14	2	3	21	2			23		39%	(17%)	34	2	14	41%							
						Set 4	18	1	6	25	5			21		33%	(14%)	45	2	3	18	40%						

Player	Set					Points					Serve					Reception					Attack					BK			
	1	2	3	4	5	BP	W-L	Tot	Err	Pts	Tot	Err	Post	(Exc%)	Tot	Err	Blo	Pts	Pts%	Tot	Err	Post	(Exc%)	Tot	Err		Blo	Pts	Pts%
01 Jones Rainelle	2	5				1																							
02 Santos Raymarley	3	3	6			6.3	3	1	42	12	1			1					8%	(8%)	2		2	100%	1				
03 L León Valeria															18	1	39%	(28%)											
04 Bartsch-Hackley Michelle																													
07 O'Neal Asja	5	2	5			6.4	14	5	48	17	3																		
08 Cooper Reagan	4	1	4			5.7	17	4	41	18				36	1	33%	(14%)	41	1	17	41%								
09 Drexel Samantha	6	5	6			6	6	2						13	1														
12 Stringer Tori	5					5.5																							
14 Perovic Nikoleta	3					5.5																							
15 Ortiz DeJesus Ivania																													
16 Rosenthal Jenna	5	2				7	7	4	45	6	1			1				8%	(8%)	10		3	30%	4					
17 Courtney Lush Megan	1	4	4	1		5.8	18	7	43	13				39				47%	(20%)	38	5	18	47%						
18 Moore Jenavisa																													
22 Hard Kaitlyn																													
<b>Players total</b>						<b>67</b>	<b>23</b>	<b>+41</b>	<b>90</b>	<b>7</b>	<b>1</b>	<b>87</b>	<b>2</b>	<b>38%</b>	<b>(18%)</b>	<b>146</b>	<b>12</b>	<b>57</b>	<b>39%</b>	<b>9</b>									
Coach undefined undefined						Set 1	13	7	21					23		35%	(13%)	48	4	13	33%								
Assistant: undefined undefined						Set 2	14	4	22	4	1			23		48%	(20%)	35	2	14	40%								
						Set 3	20	2	3	25	2			21		43%	(29%)	31	2	20	61%								
						Set 4	18	3	9	22	1			28		25%	(5%)	38	5	10	26%								

Omaha Supernovas					Columbus Fury				
Points	83	Kill on reception			Points	87	BP Break point		
S in Diff	49	Errors B1o Pts% Tot			S in Diff	44	Err Errors		
6 +4	Each 1.69 receptions	1st Attack AFTER POSITIVE RECEPTION (+#)			6 -4	Each 1.98 receptions	W-L Win-Lost		
5 0	1 Point	Errors B1o Pts% Tot			5 -5	1 Point	Phe Points		
4 +3		1st Attack AFTER NEGATIVE RECEPTION (-#)			4 +3		Blo Blocked		
3 +1	Serve	Errors B1o Pts% Tot			3 +1	Serve	Exc Excellent		
2 -5	Points BP	1 2 43% 32 9 5			2 -1	Points BP	Sub Substitute		
1 +4	Each 3.96 serves	Attack on dig			1 -1	Each 3.91 serves	Start Starting lineup		
	1 Break point	Errors B1o Pts% Tot				1 Break point	Start Starting server		
		7 5 35% 88 67 37% 3 6					Start Starting serve		

## Match 14: Columbus Fury 1, San Diego Mojo 3

08/04/2024		VOLLEYSTATION		PVF2		VS	
<b>Match report</b>							
San Diego Mojo		<b>3</b>		Columbus Fury		<b>1</b>	
Set	Duration	Partial score		Score			
1	00:32	7-8 16-12 21-20		23-25			
2	00:25	8-6 16-14 21-17		25-19			
3	00:28	6-8 16-13 21-20		25-22			
4	00:33	5-8 16-15 28-21		25-23			
Match		SDS-COL	Date	08/04/2024	Spectators		
Hall			Time	00:00	Receipts		
City			Referees				

Player	Set					Points					Serve					Reception					Attack					BK		
	1	2	3	4	5	BP	W-L	Tot	Err	Pts	Tot	Err	Post	(Exc%)	Tot	Err	Blo	Pts	Pts%	Tot	Err	Post	(Exc%)	Tot	Err		Blo	Pts
01 Raskie August																												
02 L Venegas Medina Shara Marie																												
03 Dahlke Kendra	2	2	2			5.5	12	5	41	16	1			19				53%	(11%)	1		1	100%					
07 Stone Ronika	6	5	5	5		6.2	11	4	47	15	1			3				18%	(23%)	28	3	1	8%					
08 Tapp Hannah	3	3	3			5.5	7	8	5	46	8	2																
09 Luberg Grace																												
10 Bastianelli Allison	3					8.5	4	2	42	2	2																	
12 Papa Valeria	5	5	5			5.5	13	7	46	13	1			14	1	56%	(36%)	38	2	3	11%							
13 Tomkom Nootsara	1	1	1	1		6	1	1	24	1																		
16 Vander Weide Lindsey	2					6.5	3	1	41	7																		
17 Stalzer Lindsay																												
19 Thomas-Allara Teri	4	4	4	4		6	28	8	48	12	2																	
23 L Velaz-Agosto Normans																												
38 Lewis Morgan																												
<b>Players total</b>						<b>81</b>	<b>34</b>	<b>+42</b>	<b>97</b>	<b>7</b>	<b>4</b>	<b>86</b>	<b>2</b>	<b>56%</b>	<b>(21%)</b>	<b>169</b>	<b>12</b>	<b>66</b>	<b>39%</b>	<b>11</b>								
Coach undefined undefined						Set 1	19	3	1	24	2			24		71%	(25%)	49	2	19	39%							
Assistant: undefined undefined						Set 2	2	18	1	4	24	3		20	1	58%	(25%)	35	3	18	51%							
						Set 3	16	4	5	25				19	1	37%	(21%)	45	2	2	36%							
						Set 4	2	13	3	7	24	2		23		61%	(13%)	48	5	2	33%							

Player	Set					Points					Serve					Reception					Attack					BK	
	1	2	3	4	5	BP	W-L	Tot	Err	Pts	Tot	Err	Post	(Exc%)	Tot	Err	Blo	Pts	Pts%	Tot	Err	Post	(Exc%)	Tot	Err		Blo
01 Jones Rainelle	2</																										