



MATCH NOTES

MATCH 28

INDY IGNITE (22-5) VS. SAN DIEGO MOJO (15-12)

Sunday | May 3 | 3 p.m. ET
WTHR+ | MLV YouTube Channel | Scripps Sports Network
Fishers Event Center | Fishers, Ind.

Indy Ignite Head Coach: Lauren Bertolacci **San Diego Mojo Head Coach:** Alisha Childress
Ignite Record (1st season): 22-5 (.814) **Mojo Record (1st season):** 15-12 (.556)
Pro Career Record (8th season): 229-42 (.845) **Pro Career Record (1st season):** 15-12 (.556)

SERIES NOTES: The Ignite are 2-1 against the Mojo this season, including a 3-0 sweep of San Diego at Fishers Event Center on Feb. 15. Both teams have qualified for the MLV Championship.

BROADCAST INFORMATION/LIVE MATCH STATISTICS

Livestream options:

- WTHR+ app
- YouTube app, search "Major League Volleyball"
- ScrippsSportsNetwork.com
- **Announcers:** Noah Reed (play-by-play), Emily Ehman (analyst)

Live Match Statistics:

- Visit IndyIgniteVB.com
- Click "Schedule" then "Stats" for desired match
- Includes running play-by-play and full composite player statistics for each set and entire match

MATCHUPS SET FOR MLV CHAMPIONSHIP IN DALLAS

The Indy Ignite will face a familiar nemesis when the MLV Championship kicks off Thursday at Comerica Center in Frisco, Texas. Their opponent in the first semifinal match is the Omaha Supernovas. Deja vu, anyone? The same teams met in the MLV Championship semifinals a year ago, when Indy stunned top-seeded Omaha in a five-set thriller.

The roles are reversed this time, with the Ignite the No. 1 seed and the Supernovas at No. 4. Dallas, the host team for the final four, is the second seed and takes on No. 3 seed San Diego in the other semifinal Thursday night. The winners advance to the championship match Saturday, May 9.

WELCOME TO INDY IGNITE PROFESSIONAL VOLLEYBALL

The Indy Ignite are one of eight teams taking the court in the third season of Major League Volleyball. The mission of the Ignite is to pursue victory, empower women and serve our community through the competitive world of pro volleyball.

- In its inaugural season as an MLV franchise, Indy finished second in the league in 2025. Other returning teams in 2026 are the Atlanta Vibe, Columbus Fury, Grand Rapids Rise, Omaha Supernovas, Orlando Valkyries and San Diego Mojo, with the Dallas Pulse joining as a new franchise.
- The Ignite are one of nine professional sports teams based in Central Indiana, along with the Indianapolis Colts (NFL), Indiana Pacers (NBA), Indiana Fever (WNBA), Noblesville Boom (NBA G League), Indy Fuel (ECHL), Indy Eleven (USL), Indianapolis Indians (IL) and Fishers Freight (IFL). Indianapolis is also home to the IndyCar Series and Indianapolis 500, and played host to the 2026 NCAA Men's Final Four as well as the men's NCAA Division II, Division III and National Invitation Tournament basketball championships in April.

MAJOR LEAGUE VOLLEYBALL PRIMER

- Each match is a best-of-five sets. In the first four sets, the winner is the first team to 25 points with at least a two-point advantage. The winner of the fifth set is the first team to 15 (by two or more points).
- There are no line judges; line scoring is done with the use of 22 high-definition cameras placed around the court. Coaches are permitted one call challenge per set. If successful, teams retain the challenge to use again later in the set. Challengeable plays are for a block touch, net fault, antenna touch, foot fault, last touch or reaching beyond the net.
- Every team plays 28 regular-season matches, four (two home, two away) against each other team in the league. The four teams with the best records advance to the MLV Championship in May.

INDY IGNITE COMMUNICATIONS

Cathy Kightlinger
Director of Communications
cathy@indyignitevb.com
317-797-3490

Mark Robinson
Communications Editor
mark@indyignitevb.com
317-308-1464

Raleigh Dethy
Communications Coordinator
raleigh@indyignitevb.com
502-552-0256

2026 SCHEDULE

| Date | Opponent | Time & Telecast/Result |
|-------|--------------------------|--|
| 01.10 | at Dallas | W, 3-1 (25-27, 27-25, 26-24, 25-20) |
| 01.17 | at Columbus | W, 3-2 (25-23, 24-26, 25-18, 22-25, 22-20) |
| 01.22 | at Orlando | W, 3-1 (25-18, 23-25, 27-25, 25-18) |
| 01.24 | vs Omaha | L, 3-1 (25-23, 22-25, 16-25, 23-25) |
| 01.29 | vs Atlanta | W, 3-1 (25-18, 16-25, 25-19, 25-18) |
| 01.31 | vs Dallas | W, 3-0 (25-14, 25-14, 29-27) |
| 02.06 | vs Grand Rapids | W, 3-1 (25-18, 18-25, 25-17, 25-22) |
| 02.09 | at San Diego | L, 3-1 (25-23, 23-25, 22-25, 15-25) |
| 02.13 | vs Orlando | W, 3-1 (25-21, 20-25, 25-22, 25-20) |
| 02.15 | vs San Diego | W, 3-0 (25-23, 25-22, 25-17) |
| 02.19 | at Dallas | W, 3-0 (25-20, 26-24, 26-24) |
| 02.21 | at Atlanta | W, 3-1 (25-21, 23-25, 27-25, 25-23) |
| 02.27 | at Columbus | W, 3-0 (25-21, 25-15, 25-23) |
| 03.01 | vs Omaha | W, 3-1 (17-25, 25-22, 25-21, 25-13) |
| 03.08 | vs Grand Rapids | W, 3-1 (23-25, 25-18, 25-22, 25-20) |
| 03.12 | vs Orlando | W, 3-0 (25-20, 25-22, 25-17) |
| 03.14 | at Omaha | L, 3-2 (20-25, 23-25, 28-26, 25-22, 14-16) |
| 03.19 | vs Columbus | W, 3-1 (25-17, 25-18, 19-25, 26-24) |
| 03.25 | at Grand Rapids | L, 3-1 (25-19, 23-25, 20-25, 17-25) |
| 04.04 | at Omaha | W, 3-0 (25-21, 25-19, 25-21) |
| 04.09 | at San Diego | W, 3-2 (25-20, 19-25, 22-25, 25-19, 15-9) |
| 04.12 | vs Atlanta | W, 3-0 (25-19, 28-26, 27-25) |
| 04.17 | at Grand Rapids | L, 3-1 (25-18, 20-25, 23-25, 23-25) |
| 04.19 | vs Dallas | W, 3-1 (25-17, 25-18, 22-25, 25-21) |
| 04.23 | at Orlando | W, 3-0 (25-20, 25-15, 25-18) |
| 04.26 | at Atlanta | W, 3-1 (25-18, 19-25, 25-22, 25-23) |
| 05.01 | vs Columbus | W, 3-2 (25-22, 20-25, 18-25, 25-18, 15-13) |
| 05.03 | vs San Diego | 3pm ET/YouTube, WTHR+ |
| 05.07 | vs Omaha* | 7pm ET/ION |
| 05.09 | MLV Championship Final** | 3pm ET/ION |

*-MLV Championship semifinal at Comerica Center in Frisco, Texas

**-Indy plays in MLV Championship Final at Comerica Center in Frisco, Texas, if it wins semifinal match



INDY IGNITE MLV LEAGUE LEADERS

THROUGH MAY 1

POINTS

Azhani Tealer
10th, 318
Team
1st, 17.90/set

KILLS

Azhani Tealer
10th, 284
Team
1st, 14.62/set

KILL PERCENTAGE

Lydia Martyn
1st, 50.9%
Team
1st, 40.5%

ASSISTS

Mia Tuaniga
2nd, 11.46/set
Team
1st, 13.58/set

KILL EFFICIENCY

Lydia Martyn
3rd, 36.2%
Team
2nd, 25.2%

BLOCKS

Lydia Martyn
7th, 46
Team
7th, 2.22/set

SERVICE ACES

Mia Tuaniga
2nd, 24
Team
2nd, 1.07/set

IGNITE DEPTH SHINES THROUGH IN WIN OVER COLUMBUS

The Ignite displayed their roster strength in Friday night's penultimate match of the regular season, a thrilling win over Columbus.

Head coach **Lauren Bertolacci** opted to rest most of her regular starters to manage their workload and keep them fresh for next week's MLV Championship. Two players, outside hitter **Taylor Landfair** and libero **Emma Halter**, made their first starts. Three other starters had 12 combined starts among them prior to Friday.

The result was a five-set victory that saw Indy overcome a 2-1 set deficit and take the deciding set after trailing 13-11. It was the Ignite's 22nd win of 2026, setting an MLV record for victories in a season.

Emoni Bush, starting for the first time in two months at outside hitter, set personal bests in kills (20), service aces (two) and points (24). Landfair had her best night with 13 kills. Halter equaled regular libero starter **Elena Scott's** season-high of 20 digs.

"I'm really excited for the athletes that were out there today," Bertolacci said. "They haven't had a lot of chances this season, but they've been practicing really well so their performances are not really a surprise to me. I'm excited that everyone else got to see that."



SHOW YOUR IGNITE LOVE BY ATTENDING SEASON FINALE

Indy closes the regular season with Fan Appreciation Day at 3 p.m. ET Sunday against San Diego. The first 1,000 fans through the doors receive an exclusive bobblehead of Ignite mascot Pepper.

Members of Pepper's Kids Club can attend a Family Fest on Forum Credit Union Plaza in front of Fishers Event Center from 1-2 p.m. that will include inflatables, face painting, an ice cream truck and more.

Ignite fans can also plan ahead and buy their 2027 season tickets now. For all Ignite ticket information, visit IndyIgniteVB.com.

RECORDS ARE MADE TO BE BROKEN ... BY THE IGNITE

The Ignite are in the midst of a record-breaking season in Major League Volleyball annals. Indy has already set new league standards for wins in a season (22) and wins at home (12), with Sunday's finale still remaining.

The team is on pace to set franchise bests in nearly every statistical category and could establish new MLV team season records in kills per set (the Ignite are averaging 14.62 and the current record is 14.34) and kill percentage (Ignite are at 40.5%, record is 36.7%). Middle blocker **Lydia Martyn** could also set all-time league bests in kill percentage (she's at 50.9%, the record is 50.7%) and kill efficiency (Martyn has 36.2%, the record is 35.9%).

INDY IGNITE FRANCHISE FIRSTS

Year For Ignite Brand: 2024

Season of Play: 2025

Match/Victory: January 11, 2025 (home vs. Orlando)

Home Court: Fishers Event Center

Signed Player: Sydney Hilley

Draft Pick: Anna DeBeer

Head Coach: George Padjen

President and General Manager: Mary Kay Huse

Owners: Jim Schumacher and Don Hutchinson

INDY IGNITE PREVIOUS MATCH STARTERS



TAYLOR LANDFAIR
OUTSIDE HITTER



CARA CRESSE
MIDDLE BLOCKER



EMONI BUSH
OUTSIDE HITTER



AINISE HAVILI
SETTER



EMMA CLOTHIER
MIDDLE BLOCKER



CAMRYN HANNAH
OPPOSITE HITTER



EMMA HALTER
LIBERO

ALPHABETICAL ROSTER

| NO. | NAME | POS | HT | EXP | HOMETOWN | COLLEGE | ACQUIRED | INSTAGRAM |
|-----|----------------------|-----|------|-----|----------------------------|---------------------|------------------|--------------------|
| 28 | Alexandra Botezat | MB | 6-6 | 8 | Castelfranco Veneto, Italy | Guglielmo Marconi | Signed 8/2025 | @itsbote |
| 4 | Emoni Bush | OH | 6-3 | R | Campbell River, B.C. | Washington/Oklahoma | Draft Rd. 4 | @emonibushh |
| 26 | Emma Clothier | MB | 6-2 | 3 | Carrollton, Texas | Florida State/SMU | Signed 3/2026 | @emmaclothier |
| 13 | Cara Cresse | MB | 6-6 | R | Fort Wayne, Ind. | Louisville | Draft Rd. 1 | @cara.cresse |
| 14 | Anna DeBeer | OH | 5-11 | 1 | Louisville, Ky. | Louisville | Re-Signed 8/2025 | @anna.debeer |
| 2 | Emma Halter | L | 5-5 | R | Indianapolis, Ind. | Texas | Draft Rd. 2 | @em_halter |
| 8 | Camryn Hannah | OPP | 6-2 | 1 | Lansing, Ill. | Penn State | Signed 8/2025 | @camrynhannah |
| 11 | Ainise Havili | S | 5-10 | 4 | Fort Worth, Texas | Kansas | Re-Signed 8/2025 | @ahavili |
| 1 | Jaelyn Keene | MB | 6-2 | 8 | Jacksonville, Ill. | Illinois State/UAB | Signed 3/2026 | @jaelynkeene |
| 12 | Taylor Landfair | OH | 6-5 | R | Plainfield, Ill. | Minnesota/Nebraska | Draft Rd. 4 | @taylor_landfair49 |
| 23 | Kayla Lund | OH | 6-0 | 4 | Pasadena, Calif. | Pittsburgh | Signed 8/2025 | @kayla.lund |
| 22 | Lydia Martyn | MB | 6-3 | 1 | Anderson, S.C. | Liberty/Oklahoma | Re-Signed 8/2025 | @lydia.martyn |
| 7 | Leketor Member-Meneh | OH | 5-8 | 3 | St. Louis, Mo. | Missouri/Pittsburgh | Re-Signed 8/2025 | @leketorofficial |
| 17 | Blake Mohler** | MB | 6-1 | 5 | Ocean Springs, Miss. | Purdue | Re-Signed 8/2025 | @blakemohler |
| 9 | Elena Scott | L | 5-9 | 1 | Louisville, Ky. | Louisville | Re-Signed 8/2025 | @elenascott |
| 19 | Azhani Tealer | OPP | 5-9 | 2 | Grand Prairie, Texas | Kentucky | Re-Signed 8/2025 | @azhanitealer |
| 91 | Mia Tuaniga | S | 5-9 | 2 | Long Beach, Calif. | USC | Signed 8/2025 | @miatuaniga |

*-Practice player; **-Injured reserve

NUMERICAL ROSTER

| | |
|------------------------|----------------------|
| 1 Jaelyn Keene | 14 Anna DeBeer |
| 2 Emma Halter | 17 Blake Mohler |
| 4 Emoni Bush | 19 Azhani Tealer |
| 7 Leketor Member-Meneh | 22 Lydia Martyn |
| 8 Camryn Hannah | 23 Kayla Lund |
| 9 Elena Scott | 26 Emma Clothier |
| 11 Ainise Havili | 28 Alexandra Botezat |
| 12 Taylor Landfair | 91 Mia Tuaniga |
| 13 Cara Cresse | |

PRONUNCIATION GUIDE

| | |
|----------------------|--------------------------------|
| Alexandra Botezat | ah-lek-SAHN-drah / bo-TEH-zaht |
| Emoni Bush | eh-MAH-nee |
| Emma Clothier | CLOH-thee-ur |
| Cara Cresse | KRES-ee |
| Ainise Havili | uh-NEESE-aye / ha-VEE-lee |
| Leketor Member-Meneh | LEK-uh-tor / MEM-ber / MEN-uh |
| Blake Mohler | MOLE-ur |
| Elena Scott | uh-LANE-uh |
| Azhani Tealer | uh-ZHAH-nee / TEE-ler |
| Mia Tuaniga | MEE-uh / too-ah-NEE-ngah |
| Lauren Bertolacci | BER-toe-LAH-chee |
| Bruno Amorim | AH-moh-reen |

STAFF

Head Coach: Lauren Bertolacci
Assistant Coach: Haley Brightwell
Assistant Coach: Brett Agne
Assistant Coach: Bruno Amorim
Assistant Coach: Jesse Tupac
Interim Director of Volleyball Operations: Hallie Kirk
Performance Coordinator: Zuzanna Czyznielewska
Athletic Trainer: Braydon Augustinovic



FROM WHERE

| | | | |
|------------|---|----------------|---|
| California | 2 | Kentucky | 2 |
| Canada | 1 | Mississippi | 1 |
| Illinois | 3 | Missouri | 1 |
| Indiana | 2 | South Carolina | 1 |
| Italy | 1 | Texas | 3 |

PLAYER ROSTER



ALEXANDRA BOTEZAT
#28 | Middle Blocker
6-6 | Guglielmo Marconi



EMONI BUSH
#4 | Outside Hitter
6-3 | Oklahoma



EMMA CLOTHIER
#26 | Middle Blocker
6-2 | SMU



CARA CRESSE
#13 | Middle Blocker
6-6 | Louisville



ANNA DEBEER
#14 | Outside Hitter
6-0 | Louisville



EMMA HALTER
#2 | Libero
5-5 | Texas



CAMRYN HANNAH
#8 | Opposite Hitter
6-2 | Penn State



AINISE HAVILI
#11 | Setter
5-10 | Kansas



JAELYN KEENE
#1 | Middle Blocker
6-2 | Illinois State



TAYLOR LANDFAIR
#12 | Outside Hitter
6-5 | Nebraska



KAYLA LUND
#23 | Outside Hitter
6-0 | Pittsburgh



LYDIA MARTYN
#22 | Middle Blocker
6-3 | Oklahoma



LEKETOR MEMBER-MENEH
#7 | Opposite Hitter
5-8 | Pittsburgh



BLAKE MOHLER
#17 | Middle Blocker
6-1 | Purdue



ELENA SCOTT
#9 | Libero
5-9 | Louisville



AZHANI TEALER
#19 | Opposite Hitter
5-9 | Kentucky



MIA TUANIGA
#91 | Setter
5-9 | USC

HEAD COACH LAUREN BERTOLACCI

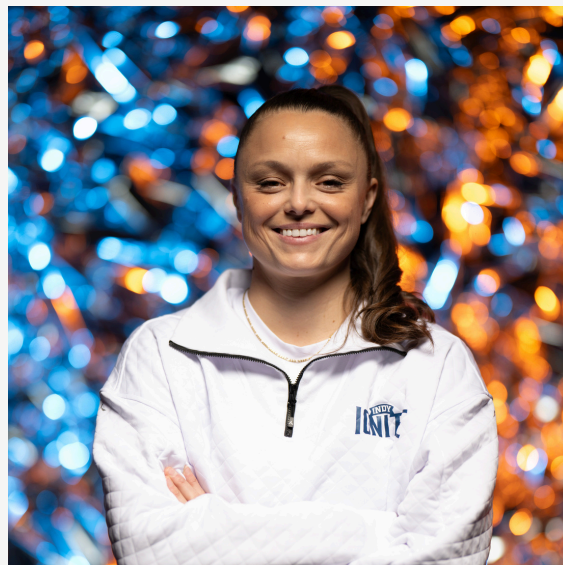
Lauren Bertolacci joins the Indy Ignite as head coach for the 2026 Major League Volleyball season following an extensive and successful career as a player and coach around the world.

The native Australian fashioned a 10-year professional playing career across Europe while also being a member of the Australian National Team from 2005-15. She began her coaching career with the Luzern men's pro team in 2013, helping elevate it to a dominant force in Switzerland's top division. In 2018, Bertolacci became head coach of Viteos NUC, where she led the women's club through seven standout seasons – capturing six national championships, four Swiss Cup titles and guiding the team to a historic appearance in the 2024 CEV Cup final. She concluded her tenure with an impressive 207-37 record, establishing NUC as a force in Europe.

In 2021, Bertolacci was appointed head coach of the Swiss Women's National Team. At the 2023 European Championships, she was the only female head coach and led Switzerland to its best-ever result. In 2025, she guided the team to a Silver League championship and promotion to the prestigious Golden League. Bertolacci has also served in coaching roles with the Australian and Canadian national teams, including a bronze medal finish with Team Canada at the 2021 NORCECA Championship.

Bertolacci says she was intrigued by the opportunity to join the Ignite, with the team fresh off its runner-up finish in the 2025 MLV Championship. After speaking with Indy's upper management, the decision to take the head coaching job was easy.

"From my very first conversations with the Ignite leadership, I felt a strong connection to their vision, values and professionalism," she says. "It's clear this organization is building something special, and I'm excited to join a team that made such a powerful statement in its first season. To be part of pushing the Ignite toward championship contention again in 2026 is a tremendous honor. To be now in what's not quite the ground floor but stepping in maybe even at a better time where things are a little bit more established, I think is really exciting."



COACHES AND VOLLEYBALL STAFF



HALEY BRIGHTWELL
ASSISTANT COACH



BRETT AGNE
ASSISTANT COACH



BRUNO AMORIM
ASSISTANT COACH



JESSE TUPAC
ASSISTANT COACH



ZUZANNA CZYNIIEWSKA
PERFORMANCE COORDINATOR



BRAYDON AUGUSTINOVIC
ATHLETIC TRAINER

PLAYER PROFILE JAELYN KEENE



Jaelyn Keene wasted no time making her presence felt as a member of the Indy Ignite. Signed March 30 to bolster the injury-depleted middle blocker position, the 30-year-old from Jacksonville, Ill., made her Major League Volleyball debut April 23 at Orlando when she was cast into a starting role. Keene responded with nine kills and a service ace as the Ignite swept the Valkyries.

Keene starred at Illinois State University before playing the past seven years in Europe. She credited that experience for being able to jump right in with Indy.

"Playing seven years overseas, I would say that I adapt really well to new environments and cultures, so I think (it helped) me integrate with the team," she explained. "They were very open to me coming and I've played with many teams, many players, so I think that's an advantage. Overall, I felt good because of the girls and the coaching staff and everyone, so I could just be me."

"It feels so surreal that I am finally back to play professional volleyball in the USA," she said. "I was hoping that at some point in my career it would bring me back home. I'm excited to play so close to my hometown!"

FISHERS EVENT CENTER

11000 Stockdale Street
Fishers, IN 46037

Fishers Event Center is a 7,500 seat ultra-modern event center located 20 minutes northeast of Indianapolis. The facility, which opened in November 2024, is the largest mid-size event center in the region. It is home to three professional teams, the Indy Ignite, Indy Fuel (hockey) and Fishers Freight (indoor football), and plays host to dozens of concerts and other arts performances throughout the year.



INDY IGNITE QUICK FACTS

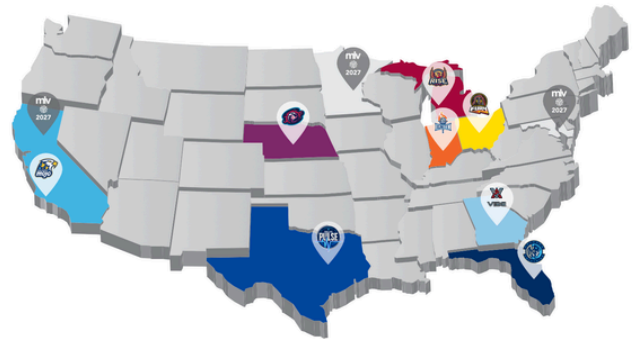
Location: Fishers, IN
 First Season: 2025
 Colors: Sky blue, deep blue, ember, and spark
 Home Arena: Fishers Event Center
 Website: Indyignitevb.com
 Founders: Jim Schumacher and Don Hutchinson
 President and General Manager: Mary Kay Huse
 Vice President of Marketing/Gameday Experience: Carly Klanac
 Director of Corporate Sponsorships: Dan Dripps
 Director of Operations: Kaci Siebrase
 Director of Community Relations: Randi Raff
 Director of Ticketing: Katie Voelz
 Director of Communications: Cathy Kightlinger
 Director of Fan Experience: Adam Day
 Interim Director of Volleyball Operations: Hallie Kirk
 Marketing Manager: Kenzie Tweedy
 Social Media Manager: Mikayla Jackson
 Sponsorships Coordinator: Ethan Fleischer
 Fan Experience Coordinator: Lauren Jackson
 Account Executive: Lucy Wheeland
 Account Executive: Marie Butler
 Corporate Sales Manager: Molly Owens
 Ticket Operations Manager: Mary Yost
 Volleyball Communications Editor: Mark Robinson
 Volleyball Communications Coordinator: Raleigh Dethy

ABOUT INDY IGNITE

Indy Ignite brings the heat of professional women's volleyball to Central Indiana. As part of Major League Volleyball, the nation's premier pro volleyball league, our mission is to pursue victory, empower women and serve our community through the competitive world of pro volleyball. Together, we are paving the way for the next generation of women's sports and inspiring girls to pursue their passion with relentless ambition.

ABOUT MAJOR LEAGUE VOLLEYBALL

Major League Volleyball, entering its third season, is the longest-running formal professional volleyball league for women in the United States. Designed to elevate the sport through world class competition, commercial innovation and cultural relevance, MLV brings together elite athletes, visionary leadership and global ambition. With alignment to USA Volleyball and a commitment to Olympic development, MLV serves as the premier pathway from professional play to the world stage. Eight teams will compete in MLV this season, with franchises in Minnesota, Northern California and Washington, D.C., set to join in 2027. For more information, visit ProVolleyball.com.



MLV STANDINGS AND UPCOMING SCHEDULE

| THROUGH MAY 1 | OVERALL | | | | | MATCH RESULT DETAILS | | | | | SETS | | | POINTS | | |
|--------------------|---------|----|------|------|------|----------------------|------|-----|-----|-----|------|----|-------|--------|------|-------|
| | TEAM | W | L | PCT. | H | A | PTS. | 3-0 | 3-1 | 3-2 | 2-3 | W | L | RATIO | W | L |
| Indy Ignite-x | 22 | 5 | .815 | 12-1 | 10-4 | 64 | 8 | 11 | 3 | 1 | 72 | 32 | 2.250 | 2453 | 2242 | 1.094 |
| Dallas Pulse-x | 20 | 7 | .741 | 9-4 | 11-3 | 55 | 9 | 5 | 6 | 1 | 65 | 38 | 1.711 | 2372 | 2253 | 1.053 |
| San Diego Mojo-x | 15 | 12 | .556 | 9-5 | 6-7 | 43 | 6 | 4 | 5 | 3 | 57 | 50 | 1.140 | 2392 | 2350 | 1.018 |
| Omaha Supernovas-x | 14 | 14 | .500 | 5-9 | 9-5 | 43 | 6 | 5 | 3 | 4 | 56 | 53 | 1.057 | 2416 | 2382 | 1.014 |
| Orlando Valkyries | 12 | 15 | .444 | 4-10 | 8-5 | 36 | 3 | 5 | 4 | 4 | 45 | 58 | 0.828 | 2295 | 2350 | 0.977 |
| Grand Rapids Rise | 12 | 16 | .429 | 7-7 | 5-9 | 37 | 1 | 8 | 3 | 4 | 50 | 62 | 0.806 | 2509 | 2546 | 0.986 |
| Atlanta Vibe | 9 | 18 | .333 | 4-10 | 5-8 | 29 | 2 | 4 | 3 | 5 | 45 | 64 | 0.703 | 2360 | 2459 | 0.960 |
| Columbus Fury | 5 | 22 | .185 | 2-11 | 3-11 | 20 | 1 | 3 | 1 | 6 | 35 | 71 | 0.493 | 2247 | 2463 | 0.912 |

SUNDAY, MAY 3
 Atlanta at Columbus
 San Diego at **INDY**
 Orlando at Dallas
End of Regular Season

THURSDAY, MAY 7
MLV Championship Semifinals
 Omaha vs. **INDY**
 San Diego vs. Dallas

SATURDAY, MAY 9
MLV Championship Final
 Thursday's winners

x: Clinched Playoff Berth

INSTAGRAM: @INDYIGNITEVB

TIKTOK: @INDYIGNITEVB

X: @INDYIGNITEVB

FACEBOOK: INDY IGNITE VOLLEYBALL

PLAYER STATISTICS

JAELYN KEENE

MIDDLE BLOCKER, 6-2
JACKSONVILLE, ILL.



1

CAREER HIGHLIGHTS

- 8 years of international experience
- 4x Conference First Team and 4x AVCA All-Region Honorable Mention at Illinois State

MATCH-BY-MATCH STATISTICS

| Joined Ignite on 4/20 | SP | K | TA | EFF | SA | AST | DIG | BLK | PTS |
|-----------------------|----------|-----------|-----------|-------------|----------|----------|----------|----------|-----------|
| 4/23 at Orlando | 3 | 9 | 15 | .533 | 1 | 0 | 2 | 0 | 10 |
| 4/26 at Atlanta | 2 | 6 | 9 | .667 | 0 | 0 | 2 | 1 | 7 |
| 5/1 vs Columbus | - | - | - | - | - | - | - | - | - |
| Total | 5 | 15 | 24 | .583 | 1 | 0 | 4 | 1 | 17 |

EMMA HALTER

LIBERO, 5-5
INDIANAPOLIS, IND.



2

CAREER HIGHLIGHTS

- 2025 All-SEC Second Team
- 2023 NCAA Final Four All-Tournament Team
- 2023 NCAA D1 Tournament Champion

MATCH-BY-MATCH STATISTICS

| | SP | K | TA | EFF | SA | AST | DIG | BLK | PTS |
|----------------------|-----------|----------|----------|-------------|----------|----------|-----------|----------|----------|
| 1/10 at Dallas | 3 | 0 | 0 | .000 | 0 | 0 | 1 | 0 | 0 |
| 1/17 at Columbus | 5 | 0 | 0 | .000 | 0 | 0 | 0 | 0 | 0 |
| 1/22 at Orlando | 3 | 0 | 0 | .000 | 0 | 0 | 0 | 0 | 0 |
| 1/24 vs Omaha | 1 | 0 | 0 | .000 | 0 | 0 | 0 | 0 | 0 |
| 1/29 vs Atlanta | 2 | 0 | 0 | .000 | 0 | 0 | 0 | 0 | 0 |
| 1/31 vs Dallas | 1 | 0 | 0 | .000 | 0 | 0 | 0 | 0 | 0 |
| 2/6 vs Grand Rapids | 1 | 0 | 0 | .000 | 0 | 0 | 1 | 0 | 0 |
| 2/9 at San Diego | 1 | 0 | 0 | .000 | 0 | 0 | 0 | 0 | 0 |
| 2/13 vs Orlando | 2 | 0 | 0 | .000 | 0 | 0 | 2 | 0 | 0 |
| 2/15 vs San Diego | 3 | 0 | 0 | .000 | 0 | 2 | 2 | 0 | 0 |
| 2/19 at Dallas | 2 | 0 | 0 | .000 | 0 | 0 | 3 | 0 | 0 |
| 2/21 at Atlanta | 3 | 0 | 0 | .000 | 0 | 1 | 1 | 0 | 0 |
| 2/27 at Columbus | 2 | 0 | 0 | .000 | 0 | 0 | 0 | 0 | 0 |
| 3/1 vs Omaha | 2 | 0 | 0 | .000 | 0 | 0 | 0 | 0 | 0 |
| 3/8 vs Grand Rapids | - | - | - | - | - | - | - | - | - |
| 3/12 vs Orlando | 2 | 0 | 0 | .000 | 0 | 0 | 0 | 0 | 0 |
| 3/14 at Omaha | 4 | 0 | 0 | .000 | 0 | 0 | 0 | 0 | 0 |
| 3/19 vs Columbus | 1 | 0 | 0 | .000 | 0 | 0 | 0 | 0 | 0 |
| 3/25 at Grand Rapids | 3 | 0 | 0 | .000 | 0 | 0 | 3 | 0 | 0 |
| 4/4 at Omaha | 3 | 0 | 0 | .000 | 1 | 0 | 0 | 0 | 1 |
| 4/9 at San Diego | 1 | 0 | 0 | .000 | 0 | 0 | 2 | 0 | 0 |
| 4/12 vs Atlanta | 2 | 0 | 0 | .000 | 0 | 0 | 0 | 0 | 0 |
| 4/17 at Grand Rapids | 2 | 0 | 0 | .000 | 0 | 0 | 0 | 0 | 0 |
| 4/19 vs Dallas | 3 | 0 | 0 | .000 | 0 | 0 | 0 | 0 | 0 |
| 4/23 at Orlando | 1 | 0 | 0 | .000 | 0 | 0 | 1 | 0 | 0 |
| 4/26 at Atlanta | - | - | - | - | - | - | - | - | - |
| 5/1 vs Columbus | 5 | 0 | 0 | .000 | 0 | 5 | 20 | 0 | 0 |
| Total | 58 | 0 | 0 | .000 | 1 | 7 | 36 | 0 | 1 |

EMONI BUSH

OUTSIDE HITTER, 6-3
CAMPBELL RIVER, B.C.



4

CAREER HIGHLIGHTS

- 2024 All-Big Ten Second Team
- 2022 All-Pac-12 Honorable Mention
- 1,050 kills in collegiate career

MATCH-BY-MATCH STATISTICS

| | SP | K | TA | EFF | SA | AST | DIG | BLK | PTS |
|----------------------|-----------|-----------|------------|-------------|----------|----------|-----------|----------|-----------|
| 1/10 at Dallas | 2 | 0 | 8 | -.375 | 1 | 0 | 2 | 3 | 4 |
| 1/17 at Columbus | - | - | - | - | - | - | - | - | - |
| 1/22 at Orlando | 3 | 12 | 32 | .219 | 1 | 0 | 3 | 0 | 13 |
| 1/24 vs Omaha | - | - | - | - | - | - | - | - | - |
| 1/29 vs Atlanta | 1 | 0 | 0 | 0 | 0 | 0 | 0 | 0 | 0 |
| 1/31 vs Dallas | - | - | - | - | - | - | - | - | - |
| 2/6 vs Grand Rapids | - | - | - | - | - | - | - | - | - |
| 2/9 at San Diego | 2 | 3 | 16 | -.125 | 0 | 0 | 6 | 0 | 3 |
| 2/13 vs Orlando | - | - | - | - | - | - | - | - | - |
| 2/15 vs San Diego | - | - | - | - | - | - | - | - | - |
| 2/19 at Dallas | 1 | 0 | 0 | .000 | 0 | 0 | 0 | 0 | 0 |
| 2/21 at Atlanta | - | - | - | - | - | - | - | - | - |
| 2/27 at Columbus | - | - | - | - | - | - | - | - | - |
| 3/1 vs Omaha | - | - | - | - | - | - | - | - | - |
| 3/8 vs Grand Rapids | - | - | - | - | - | - | - | - | - |
| 3/12 vs Orlando | - | - | - | - | - | - | - | - | - |
| 3/14 at Omaha | 1 | 0 | 0 | .000 | 0 | 0 | 0 | 0 | 0 |
| 3/19 vs Columbus | - | - | - | - | - | - | - | - | - |
| 3/25 at Grand Rapids | 2 | 0 | 0 | .000 | 0 | 0 | 0 | 0 | 0 |
| 4/4 at Omaha | - | - | - | - | - | - | - | - | - |
| 4/9 at San Diego | 2 | 3 | 11 | .091 | 0 | 0 | 3 | 0 | 3 |
| 4/12 vs Atlanta | - | - | - | - | - | - | - | - | - |
| 4/17 at Grand Rapids | 2 | 0 | 1 | 0 | 0 | 0 | 0 | 0 | 0 |
| 4/19 vs Dallas | - | - | - | - | - | - | - | - | - |
| 4/23 at Orlando | - | - | - | - | - | - | - | - | - |
| 4/26 at Atlanta | - | - | - | - | - | - | - | - | - |
| 5/1 vs Columbus | 5 | 20 | 55 | .255 | 2 | 1 | 4 | 2 | 24 |
| Total | 21 | 38 | 123 | .138 | 4 | 1 | 18 | 5 | 47 |

LEKETOR MEMBER-MENEH

OUTSIDE HITTER, 5-8
ST LOUIS, MO.



7

CAREER HIGHLIGHTS

- 2021 AVCA All-American
- 2021 NCAA Regional All-Tournament MVP
- Led the Ignite in kills per set last season, averaging 4.38

MATCH-BY-MATCH STATISTICS

| | SP | K | TA | EFF | SA | AST | DIG | BLK | PTS |
|----------------------|-----------|------------|------------|-------------|-----------|-----------|------------|-----------|------------|
| 1/10 at Dallas | 3 | 10 | 24 | .292 | 0 | 0 | 10 | 0 | 10 |
| 1/17 at Columbus | 5 | 23 | 51 | .314 | 0 | 1 | 8 | 1 | 24 |
| 1/22 at Orlando | 2 | 5 | 14 | .286 | 0 | 0 | 7 | 1 | 6 |
| 1/24 vs Omaha | 4 | 12 | 31 | .226 | 0 | 1 | 10 | 0 | 12 |
| 1/29 vs Atlanta | 4 | 10 | 33 | .091 | 4 | 0 | 9 | 1 | 15 |
| 1/31 vs Dallas | 3 | 9 | 21 | .381 | 1 | 0 | 5 | 1 | 11 |
| 2/6 vs Grand Rapids | 4 | 10 | 31 | .065 | 3 | 0 | 13 | 1 | 14 |
| 2/9 at San Diego | 4 | 9 | 28 | .179 | 0 | 0 | 10 | 0 | 9 |
| 2/13 vs Orlando | 4 | 10 | 34 | .029 | 0 | 1 | 12 | 1 | 11 |
| 2/15 vs San Diego | 3 | 13 | 30 | .333 | 0 | 0 | 6 | 0 | 13 |
| 2/19 at Dallas | 3 | 11 | 30 | .267 | 2 | 1 | 5 | 1 | 14 |
| 2/21 at Atlanta | 4 | 14 | 44 | .136 | 0 | 1 | 14 | 2 | 16 |
| 2/27 at Columbus | 3 | 8 | 26 | .154 | 3 | 0 | 3 | 1 | 12 |
| 3/1 vs Omaha | 1 | 2 | 9 | .000 | 0 | 0 | 2 | 0 | 2 |
| 3/8 vs Grand Rapids | 4 | 15 | 41 | .293 | 0 | 1 | 7 | 1 | 16 |
| 3/12 vs Orlando | 3 | 12 | 30 | .300 | 0 | 0 | 9 | 1 | 13 |
| 3/14 at Omaha | 3 | 7 | 19 | .158 | 1 | 1 | 7 | 0 | 8 |
| 3/19 vs Columbus | - | - | - | - | - | - | - | - | - |
| 3/25 at Grand Rapids | 3 | 8 | 25 | .200 | 0 | 0 | 7 | 0 | 8 |
| 4/4 at Omaha | 3 | 10 | 21 | .381 | 0 | 1 | 8 | 1 | 11 |
| 4/9 at San Diego | 3 | 4 | 22 | -.045 | 1 | 0 | 7 | 0 | 5 |
| 4/12 vs Atlanta | 3 | 13 | 29 | .345 | 0 | 0 | 12 | 1 | 14 |
| 4/17 at Grand Rapids | 4 | 18 | 37 | .378 | 1 | 1 | 9 | 1 | 20 |
| 4/19 vs Dallas | 4 | 13 | 28 | .393 | 0 | 2 | 16 | 2 | 15 |
| 4/23 at Orlando | 3 | 12 | 27 | .296 | 0 | 1 | 13 | 0 | 12 |
| 4/26 at Atlanta | 4 | 12 | 35 | .257 | 0 | 0 | 11 | 0 | 12 |
| 5/1 vs Columbus | - | - | - | - | - | - | - | - | - |
| Total | 84 | 270 | 720 | .235 | 16 | 12 | 220 | 17 | 303 |

PLAYER STATISTICS

CAMRYN HANNAH

OPPOSITE HITTER, 6-2
LANSING, ILL.



8

CAREER HIGHLIGHTS

- 2024 National Champion at Penn State
- Back-to-back All-Big Ten recipient at Penn State
- Scored 177 points and 152 kills last season with the Vegas Thrill

MATCH-BY-MATCH STATISTICS

| | SP | K | TA | EFF | SA | AST | DIG | BLK | PTS |
|----------------------|-----------|------------|------------|-------------|----------|----------|-----------|-----------|------------|
| 1/10 at Dallas | 1 | 1 | 1 | 1.000 | 0 | 0 | 0 | 0 | 1 |
| 1/17 at Columbus | 2 | 1 | 3 | .000 | 0 | 0 | 0 | 0 | 1 |
| 1/22 at Orlando | 3 | 9 | 21 | .190 | 0 | 0 | 3 | 2 | 11 |
| 1/24 vs Omaha | - | - | - | - | - | - | - | - | - |
| 1/29 vs Atlanta | 1 | 1 | 4 | .250 | 0 | 0 | 0 | 0 | 1 |
| 1/31 vs Dallas | - | - | - | - | - | - | - | - | - |
| 2/6 vs Grand Rapids | - | - | - | - | - | - | - | - | - |
| 2/9 at San Diego | 2 | 5 | 19 | .105 | 1 | 0 | 4 | 0 | 6 |
| 2/13 vs Orlando | 1 | 1 | 4 | .000 | 0 | 0 | 0 | 0 | 1 |
| 2/15 vs San Diego | 3 | 7 | 17 | .176 | 0 | 0 | 7 | 4 | 11 |
| 2/19 at Dallas | 3 | 7 | 22 | .227 | 0 | 0 | 2 | 1 | 8 |
| 2/21 at Atlanta | 4 | 20 | 37 | .432 | 2 | 1 | 7 | 0 | 22 |
| 2/27 at Columbus | 3 | 7 | 13 | .308 | 0 | 0 | 6 | 0 | 7 |
| 3/1 vs Omaha | 4 | 12 | 25 | .320 | 1 | 0 | 6 | 1 | 14 |
| 3/8 vs Grand Rapids | 3 | 10 | 21 | .381 | 0 | 0 | 5 | 1 | 11 |
| 3/12 vs Orlando | 2 | 7 | 15 | .267 | 0 | 0 | 3 | 1 | 8 |
| 3/14 at Omaha | 3 | 6 | 17 | .176 | 0 | 0 | 6 | 0 | 6 |
| 3/19 vs Columbus | 3 | 6 | 9 | .556 | 0 | 0 | 1 | 1 | 7 |
| 3/25 at Grand Rapids | 2 | 4 | 14 | .071 | 0 | 0 | 3 | 0 | 4 |
| 4/4 at Omaha | - | - | - | - | - | - | - | - | - |
| 4/9 at San Diego | - | - | - | - | - | - | - | - | - |
| 4/12 vs Atlanta | 1 | 0 | 1 | -1.000 | 0 | 0 | 0 | 1 | 1 |
| 4/17 at Grand Rapids | 2 | 2 | 5 | .200 | 0 | 0 | 0 | 0 | 2 |
| 4/19 vs Dallas | - | - | - | - | - | - | - | - | - |
| 4/23 at Orlando | - | - | - | - | - | - | - | - | - |
| 4/26 at Atlanta | 4 | 10 | 31 | .194 | 2 | 1 | 6 | 1 | 13 |
| 5/1 vs Columbus | 5 | 10 | 28 | .321 | 0 | 0 | 11 | 0 | 10 |
| Total | 52 | 126 | 307 | .261 | 6 | 2 | 70 | 13 | 145 |

ELENA SCOTT

LIBERO, 5-9
LOUISVILLE, KY.



9

CAREER HIGHLIGHTS

- Three-time AVCA All-American
- Two-time ACC Defensive Player of the Year
- Led the Ignite in digs (374) and digs/set (3.22) in 2025

MATCH-BY-MATCH STATISTICS

| | SP | K | TA | EFF | SA | AST | DIG | BLK | PTS |
|----------------------|------------|----------|----------|-------------|----------|-----------|------------|----------|----------|
| 1/10 at Dallas | 4 | 0 | 0 | .000 | 0 | 3 | 13 | 0 | 0 |
| 1/17 at Columbus | 5 | 0 | 0 | .000 | 0 | 2 | 15 | 0 | 0 |
| 1/22 at Orlando | 4 | 0 | 0 | .000 | 0 | 1 | 7 | 0 | 0 |
| 1/24 vs Omaha | 4 | 0 | 0 | .000 | 0 | 3 | 15 | 0 | 0 |
| 1/29 vs Atlanta | 4 | 0 | 0 | .000 | 0 | 2 | 14 | 0 | 0 |
| 1/31 vs Dallas | 3 | 0 | 0 | .000 | 0 | 1 | 12 | 0 | 0 |
| 2/6 vs Grand Rapids | 4 | 0 | 0 | .000 | 0 | 2 | 11 | 0 | 0 |
| 2/9 at San Diego | 4 | 0 | 0 | .000 | 0 | 3 | 14 | 0 | 0 |
| 2/13 vs Orlando | 4 | 0 | 0 | .000 | 0 | 5 | 14 | 0 | 0 |
| 2/15 vs San Diego | 3 | 0 | 0 | .000 | 0 | 2 | 15 | 0 | 0 |
| 2/19 at Dallas | 3 | 0 | 0 | .000 | 0 | 1 | 14 | 0 | 0 |
| 2/21 at Atlanta | 4 | 0 | 0 | .000 | 0 | 4 | 6 | 0 | 0 |
| 2/27 at Columbus | 3 | 0 | 0 | .000 | 0 | 3 | 15 | 0 | 0 |
| 3/1 vs Omaha | 4 | 0 | 0 | .000 | 0 | 2 | 11 | 0 | 0 |
| 3/8 vs Grand Rapids | 4 | 0 | 0 | .000 | 0 | 2 | 17 | 0 | 0 |
| 3/12 vs Orlando | 3 | 0 | 0 | .000 | 0 | 4 | 13 | 0 | 0 |
| 3/14 at Omaha | 5 | 0 | 0 | .000 | 0 | 5 | 20 | 0 | 0 |
| 3/19 vs Columbus | 4 | 0 | 0 | .000 | 0 | 2 | 13 | 0 | 0 |
| 3/25 at Grand Rapids | 4 | 0 | 0 | .000 | 0 | 2 | 14 | 0 | 0 |
| 4/4 at Omaha | 3 | 0 | 0 | .000 | 0 | 5 | 8 | 0 | 0 |
| 4/9 at San Diego | 5 | 0 | 0 | .000 | 0 | 7 | 20 | 0 | 0 |
| 4/12 vs Atlanta | 3 | 0 | 0 | .000 | 0 | 5 | 14 | 0 | 0 |
| 4/17 at Grand Rapids | 4 | 0 | 0 | .000 | 0 | 5 | 12 | 0 | 0 |
| 4/19 vs Dallas | 4 | 0 | 0 | .000 | 0 | 3 | 11 | 0 | 0 |
| 4/23 at Orlando | 3 | 0 | 0 | .000 | 0 | 0 | 10 | 0 | 0 |
| 4/26 at Atlanta | 4 | 0 | 0 | .000 | 0 | 0 | 16 | 0 | 0 |
| 5/1 vs Columbus | 3 | 0 | 0 | .000 | 0 | 0 | 0 | 0 | 0 |
| Total | 102 | 0 | 0 | .000 | 0 | 74 | 344 | 0 | 0 |

AINISE HAVILI

SETTER, 5-10
FORT WORTH, TEXAS



11

CAREER HIGHLIGHTS

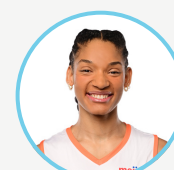
- Four-time AVCA All-American
- Two-time Big 12 Setter of the Year
- Career assists leader at Kansas (5,255)

MATCH-BY-MATCH STATISTICS

| | SP | K | TA | EFF | SA | AST | DIG | BLK | PTS |
|----------------------|-----------|----------|-----------|-------------|----------|------------|-----------|----------|-----------|
| 1/10 at Dallas | 4 | 1 | 2 | .500 | 0 | 14 | 1 | 0 | 1 |
| 1/17 at Columbus | 1 | 0 | 0 | .000 | 0 | 0 | 0 | 0 | 0 |
| 1/22 at Orlando | 3 | 2 | 6 | .170 | 0 | 31 | 7 | 1 | 3 |
| 1/24 vs Omaha | 1 | 1 | 1 | 1.000 | 0 | 2 | 1 | 0 | 1 |
| 1/29 vs Atlanta | 1 | 0 | 0 | .000 | 0 | 2 | 2 | 0 | 0 |
| 1/31 vs Dallas | - | - | - | - | - | - | - | - | - |
| 2/6 vs Grand Rapids | - | - | - | - | - | - | - | - | - |
| 2/9 at San Diego | 2 | 0 | 0 | .000 | 0 | 6 | 2 | 0 | 0 |
| 2/13 vs Orlando | 1 | 0 | 0 | .000 | 0 | 2 | 0 | 0 | 0 |
| 2/15 vs San Diego | 1 | 0 | 0 | .000 | 0 | 1 | 0 | 0 | 0 |
| 2/19 at Dallas | 1 | 0 | 0 | .000 | 0 | 0 | 0 | 0 | 0 |
| 2/21 at Atlanta | - | - | - | - | - | - | - | - | - |
| 2/27 at Columbus | 2 | 0 | 0 | .000 | 0 | 1 | 0 | 0 | 0 |
| 3/1 vs Omaha | 1 | 0 | 0 | .000 | 0 | 1 | 0 | 0 | 0 |
| 3/8 vs Grand Rapids | - | - | - | - | - | - | - | - | - |
| 3/12 vs Orlando | - | - | - | - | - | - | - | - | - |
| 3/14 at Omaha | 2 | 0 | 0 | .000 | 0 | 0 | 0 | 0 | 0 |
| 3/19 vs Columbus | 2 | 0 | 1 | -1.000 | 0 | 3 | 1 | 0 | 0 |
| 3/25 at Grand Rapids | 4 | 1 | 1 | 1.000 | 0 | 35 | 11 | 0 | 1 |
| 4/4 at Omaha | - | - | - | - | - | - | - | - | - |
| 4/9 at San Diego | - | - | - | - | - | - | - | - | - |
| 4/12 vs Atlanta | 1 | 0 | 0 | .000 | 0 | 3 | 0 | 0 | 0 |
| 4/17 at Grand Rapids | 4 | 2 | 4 | .500 | 0 | 51 | 14 | 0 | 2 |
| 4/19 vs Dallas | - | - | - | - | - | - | - | - | - |
| 4/23 at Orlando | - | - | - | - | - | - | - | - | - |
| 4/26 at Atlanta | 2 | 0 | 3 | .000 | 0 | 17 | 6 | 0 | 0 |
| 5/1 vs Columbus | 5 | 2 | 4 | .500 | 0 | 49 | 15 | 0 | 2 |
| Total | 38 | 9 | 22 | .318 | 0 | 218 | 60 | 1 | 10 |

TAYLOR LANDFAIR

OUTSIDE HITTER, 6-5
PLAINFIELD, ILL.



12

CAREER HIGHLIGHTS

- Three-time All-Big Ten First Team
- 2022 Big Ten Player of the Year
- 2025 Conference Champion

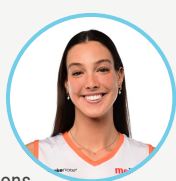
MATCH-BY-MATCH STATISTICS

| | SP | K | TA | EFF | SA | AST | DIG | BLK | PTS |
|----------------------|-----------|-----------|-----------|-------------|----------|----------|-----------|----------|-----------|
| 1/10 at Dallas | - | - | - | - | - | - | - | - | - |
| 1/17 at Columbus | - | - | - | - | - | - | - | - | - |
| 1/22 at Orlando | - | - | - | - | - | - | - | - | - |
| 1/24 vs Omaha | 2 | 1 | 2 | .500 | 0 | 0 | 2 | 0 | 1 |
| 1/29 vs Atlanta | 1 | 0 | 0 | .000 | 0 | 0 | 0 | 0 | 0 |
| 1/31 vs Dallas | 1 | 0 | 0 | .000 | 0 | 0 | 0 | 0 | 0 |
| 2/6 vs Grand Rapids | 1 | 0 | 0 | .000 | 0 | 0 | 0 | 0 | 0 |
| 2/9 at San Diego | 1 | 1 | 4 | -.250 | 0 | 0 | 0 | 1 | 2 |
| 2/13 vs Orlando | 1 | 0 | 1 | .000 | 0 | 0 | 3 | 0 | 0 |
| 2/15 vs San Diego | 2 | 0 | 0 | .000 | 0 | 0 | 0 | 0 | 0 |
| 2/19 at Dallas | - | - | - | - | - | - | - | - | - |
| 2/21 at Atlanta | - | - | - | - | - | - | - | - | - |
| 2/27 at Columbus | - | - | - | - | - | - | - | - | - |
| 3/1 vs Omaha | 2 | 0 | 0 | 0 | 0 | 0 | 0 | 0 | 0 |
| 3/8 vs Grand Rapids | 2 | 0 | 0 | 0 | 0 | 0 | 1 | 0 | 0 |
| 3/12 vs Orlando | - | - | - | - | - | - | - | - | - |
| 3/14 at Omaha | 4 | 2 | 2 | 1.000 | 0 | 0 | 1 | 0 | 2 |
| 3/19 vs Columbus | 1 | 0 | 1 | .000 | 0 | 0 | 0 | 0 | 0 |
| 3/25 at Grand Rapids | 3 | 11 | 21 | .381 | 1 | 0 | 5 | 1 | 13 |
| 4/4 at Omaha | - | - | - | - | - | - | - | - | - |
| 4/9 at San Diego | 2 | 7 | 18 | .333 | 0 | 0 | 5 | 1 | 8 |
| 4/12 vs Atlanta | 1 | 0 | 3 | .000 | 0 | 0 | 0 | 0 | 0 |
| 4/17 at Grand Rapids | - | - | - | - | - | - | - | - | - |
| 4/19 vs Dallas | 3 | 0 | 0 | .000 | 0 | 0 | 0 | 0 | 0 |
| 4/23 at Orlando | 2 | 0 | 0 | .000 | 0 | 0 | 0 | 0 | 0 |
| 4/26 at Atlanta | - | - | - | - | - | - | - | - | - |
| 5/1 vs Columbus | 5 | 13 | 40 | .075 | 1 | 0 | 4 | 1 | 15 |
| Total | 33 | 35 | 92 | .207 | 2 | 0 | 21 | 4 | 41 |

PLAYER STATISTICS

CARA CRESSE

MIDDLE BLOCKER, 6-6
FORT WAYNE, IND.



13

CAREER HIGHLIGHTS

- 2025 All-ACC First Team
- Team leader in blocks for consecutive seasons
- Recorded 15 double-digit kill matches in final season

MATCH-BY-MATCH STATISTICS

| | SP | K | TA | EFF | SA | AST | DIG | BLK | PTS |
|----------------------|-----------|-----------|------------|-------------|-----------|----------|-----------|-----------|------------|
| 1/10 at Dallas | 4 | 4 | 15 | .200 | 0 | 0 | 1 | 2 | 6 |
| 1/17 at Columbus | - | - | - | - | - | - | - | - | - |
| 1/22 at Orlando | 4 | 5 | 15 | .000 | 1 | 0 | 3 | 4 | 10 |
| 1/24 vs Omaha | - | - | - | - | - | - | - | - | - |
| 1/29 vs Atlanta | - | - | - | - | - | - | - | - | - |
| 1/31 vs Dallas | - | - | - | - | - | - | - | - | - |
| 2/6 vs Grand Rapids | 4 | 9 | 14 | .357 | 3 | 0 | 1 | 1 | 13 |
| 2/9 at San Diego | - | - | - | - | - | - | - | - | - |
| 2/13 vs Orlando | 3 | 7 | 13 | .462 | 0 | 0 | 0 | 2 | 9 |
| 2/15 vs San Diego | 3 | 4 | 12 | .200 | 0 | 0 | 1 | 2 | 6 |
| 2/19 at Dallas | - | - | - | - | - | - | - | - | - |
| 2/21 at Atlanta | - | - | - | - | - | - | - | - | - |
| 2/27 at Columbus | - | - | - | - | - | - | - | - | - |
| 3/1 vs Omaha | - | - | - | - | - | - | - | - | - |
| 3/8 vs Grand Rapids | - | - | - | - | - | - | - | - | - |
| 3/12 vs Orlando | - | - | - | - | - | - | - | - | - |
| 3/14 at Omaha | - | - | - | - | - | - | - | - | - |
| 3/19 vs Columbus | 4 | 7 | 19 | .316 | 1 | 0 | 2 | 2 | 10 |
| 3/25 at Grand Rapids | 4 | 3 | 9 | .000 | 2 | 0 | 2 | 3 | 8 |
| 4/4 at Omaha | 3 | 5 | 7 | .714 | 0 | 0 | 4 | 3 | 8 |
| 4/9 at San Diego | 5 | 8 | 21 | .048 | 0 | 1 | 2 | 3 | 11 |
| 4/12 vs Atlanta | 2 | 2 | 7 | -.143 | 2 | 0 | 0 | 1 | 5 |
| 4/17 at Grand Rapids | 4 | 7 | 14 | .357 | 0 | 0 | 2 | 2 | 9 |
| 4/19 vs Dallas | 4 | 9 | 14 | .500 | 0 | 0 | 2 | 2 | 11 |
| 4/23 at Orlando | - | - | - | - | - | - | - | - | - |
| 4/26 at Atlanta | 2 | 4 | 5 | .800 | 0 | 0 | 2 | 0 | 4 |
| 5/1 vs Columbus | 5 | 10 | 20 | .350 | 1 | 0 | 2 | 1 | 12 |
| Total | 51 | 84 | 185 | .276 | 10 | 1 | 23 | 28 | 122 |

ANNA DEBEER

OUTSIDE HITTER, 5-11
LOUISVILLE, KY.



14

CAREER HIGHLIGHTS

- Four-time AVCA All-American
- 2023 ACC Player of the Year
- Four-time First Team All-ACC selection

MATCH-BY-MATCH STATISTICS

| | SP | K | TA | EFF | SA | AST | DIG | BLK | PTS |
|----------------------|-----------|------------|------------|-------------|-----------|----------|------------|-----------|------------|
| 1/10 at Dallas | 2 | 3 | 13 | -.154 | 2 | 0 | 3 | 0 | 5 |
| 1/17 at Columbus | 5 | 21 | 42 | .357 | 1 | 1 | 3 | 0 | 22 |
| 1/22 at Orlando | - | - | - | - | - | - | - | - | - |
| 1/24 vs Omaha | 4 | 11 | 28 | .214 | 0 | 0 | 14 | 0 | 11 |
| 1/29 vs Atlanta | - | - | - | - | - | - | - | - | - |
| 1/31 vs Dallas | 1 | 0 | 2 | .000 | 0 | 0 | 0 | 0 | 0 |
| 2/6 vs Grand Rapids | 4 | 14 | 39 | .154 | 1 | 0 | 8 | 0 | 15 |
| 2/9 at San Diego | 4 | 7 | 26 | .000 | 1 | 1 | 7 | 1 | 9 |
| 2/13 vs Orlando | 4 | 7 | 31 | -.032 | 3 | 0 | 10 | 2 | 12 |
| 2/15 vs San Diego | 3 | 10 | 30 | .200 | 4 | 0 | 2 | 0 | 14 |
| 2/19 at Dallas | 3 | 9 | 28 | .107 | 0 | 2 | 5 | 1 | 10 |
| 2/21 at Atlanta | 4 | 16 | 47 | .170 | 0 | 1 | 13 | 1 | 17 |
| 2/27 at Columbus | 3 | 12 | 26 | .385 | 0 | 0 | 5 | 1 | 13 |
| 3/1 vs Omaha | 4 | 13 | 36 | .306 | 3 | 0 | 6 | 3 | 19 |
| 3/8 vs Grand Rapids | 1 | 3 | 13 | -.154 | 0 | 0 | 3 | 0 | 3 |
| 3/12 vs Orlando | 3 | 11 | 24 | .292 | 0 | 0 | 5 | 3 | 14 |
| 3/14 at Omaha | 5 | 12 | 35 | .086 | 0 | 0 | 13 | 1 | 13 |
| 3/19 vs Columbus | 4 | 10 | 41 | .000 | 2 | 0 | 12 | 0 | 12 |
| 3/25 at Grand Rapids | 3 | 6 | 16 | .250 | 0 | 0 | 4 | 0 | 6 |
| 4/4 at Omaha | 3 | 16 | 36 | .361 | 0 | 0 | 4 | 1 | 17 |
| 4/9 at San Diego | - | - | - | - | - | - | - | - | - |
| 4/12 vs Atlanta | - | - | - | - | - | - | - | - | - |
| 4/17 at Grand Rapids | 2 | 4 | 17 | .059 | 0 | 1 | 2 | 0 | 4 |
| 4/19 vs Dallas | 4 | 8 | 35 | -.057 | 0 | 0 | 11 | 1 | 9 |
| 4/23 at Orlando | 3 | 7 | 21 | .238 | 0 | 2 | 6 | 0 | 7 |
| 4/26 at Atlanta | 3 | 4 | 17 | .059 | 0 | 0 | 5 | 2 | 6 |
| 5/1 vs Columbus | 4 | 1 | 1 | 1.000 | 0 | 1 | 1 | 0 | 1 |
| Total | 76 | 205 | 604 | .154 | 17 | 9 | 142 | 17 | 239 |

BLAKE MOHLER

MIDDLE BLOCKER, 6-1
OCEAN SPRINGS, MISS.



17

CAREER HIGHLIGHTS

- Two-time AVCA All-American
- Two-time First Team All-Big Ten selection
- Two-time AVCA All-Northeast Region honoree

MATCH-BY-MATCH STATISTICS

| | SP | K | TA | EFF | SA | AST | DIG | BLK | PTS |
|---------------------------|-----------|-----------|------------|-------------|----------|----------|-----------|-----------|------------|
| 1/10 at Dallas | 2 | 1 | 4 | .250 | 1 | 0 | 1 | 0 | 2 |
| 1/17 at Columbus | - | - | - | - | - | - | - | - | - |
| 1/22 at Orlando | 4 | 8 | 15 | .357 | 0 | 0 | 2 | 6 | 14 |
| 1/24 vs Omaha | 2 | 0 | 2 | .000 | 0 | 0 | 0 | 0 | 0 |
| 1/29 vs Atlanta | 4 | 7 | 21 | .333 | 0 | 0 | 3 | 7 | 14 |
| 1/31 vs Dallas | 3 | 5 | 14 | .286 | 0 | 0 | 1 | 0 | 5 |
| 2/6 vs Grand Rapids | 4 | 9 | 17 | .412 | 0 | 0 | 0 | 1 | 11 |
| 2/9 at San Diego | - | - | - | - | - | - | - | - | - |
| 2/13 vs Orlando | 4 | 6 | 17 | .118 | 2 | 0 | 2 | 3 | 11 |
| 2/15 vs San Diego | 3 | 8 | 12 | .500 | 0 | 0 | 2 | 4 | 12 |
| 2/19 at Dallas | 3 | 4 | 8 | .375 | 0 | 0 | 5 | 1 | 5 |
| 2/21 at Atlanta | 4 | 8 | 15 | .333 | 1 | 0 | 6 | 2 | 11 |
| 2/27 at Columbus | 3 | 7 | 14 | .500 | 0 | 0 | 2 | 0 | 7 |
| 3/1 vs Omaha | 4 | 7 | 12 | .500 | 0 | 0 | 2 | 2 | 9 |
| 3/8 vs Grand Rapids | 4 | 5 | 9 | .333 | 0 | 1 | 4 | 1 | 6 |
| 3/12 vs Orlando | - | - | - | - | - | - | - | - | - |
| 3/14 at Omaha | 5 | 8 | 19 | .316 | 0 | 0 | 5 | 5 | 13 |
| 3/19 vs Columbus | 1 | 3 | 3 | 1.000 | 0 | 0 | 0 | 1 | 4 |
| 3/25 at Grand Rapids (IR) | - | - | - | - | - | - | - | - | - |
| 4/4 at Omaha (IR) | - | - | - | - | - | - | - | - | - |
| 4/9 at San Diego (IR) | - | - | - | - | - | - | - | - | - |
| 4/12 vs Atlanta (IR) | - | - | - | - | - | - | - | - | - |
| 4/17 at Grand Rapids (IR) | - | - | - | - | - | - | - | - | - |
| 4/19 vs Dallas (IR) | - | - | - | - | - | - | - | - | - |
| 4/23 at Orlando (IR) | - | - | - | - | - | - | - | - | - |
| 4/26 at Atlanta (IR) | - | - | - | - | - | - | - | - | - |
| 5/1 vs Columbus (IR) | - | - | - | - | - | - | - | - | - |
| Total | 50 | 86 | 182 | .363 | 4 | 1 | 37 | 34 | 124 |

AZHANI TEALER

OPPOSITE HITTER, 5-9
GRAND PRAIRIE, TEXAS



19

CAREER HIGHLIGHTS

- 2020 NCAA DI Tournament Champion
- 2025 PVF All-League First Team
- Led the Ignite in blocks, service aces, and kills in 2025

MATCH-BY-MATCH STATISTICS

| | SP | K | TA | EFF | SA | AST | DIG | BLK | PTS |
|----------------------|-----------|------------|------------|-------------|----------|----------|------------|-----------|------------|
| 1/10 at Dallas | 4 | 19 | 37 | .324 | 0 | 0 | 16 | 0 | 19 |
| 1/17 at Columbus | 5 | 12 | 41 | .049 | 0 | 0 | 12 | 3 | 15 |
| 1/22 at Orlando | 3 | 10 | 19 | .357 | 0 | 0 | 5 | 0 | 10 |
| 1/24 vs Omaha | 4 | 16 | 41 | .195 | 0 | 1 | 9 | 1 | 17 |
| 1/29 vs Atlanta | 4 | 16 | 40 | .325 | 2 | 0 | 6 | 1 | 19 |
| 1/31 vs Dallas | 3 | 8 | 23 | .087 | 2 | 0 | 6 | 2 | 12 |
| 2/6 vs Grand Rapids | 4 | 16 | 31 | .419 | 0 | 0 | 11 | 2 | 18 |
| 2/9 at San Diego | 4 | 13 | 29 | .345 | 0 | 0 | 5 | 0 | 13 |
| 2/13 vs Orlando | 4 | 23 | 45 | .333 | 0 | 0 | 8 | 4 | 27 |
| 2/15 vs San Diego | 1 | 0 | 2 | -.500 | 0 | 0 | 4 | 1 | 1 |
| 2/19 at Dallas | - | - | - | - | - | - | - | - | - |
| 2/21 at Atlanta | - | - | - | - | - | - | - | - | - |
| 2/27 at Columbus | 2 | 1 | 3 | .000 | 0 | 0 | 0 | 0 | 1 |
| 3/1 vs Omaha | - | - | - | - | - | - | - | - | - |
| 3/8 vs Grand Rapids | 2 | 4 | 12 | .250 | 1 | 0 | 4 | 0 | 5 |
| 3/12 vs Orlando | 3 | 10 | 17 | .529 | 0 | 0 | 4 | 1 | 11 |
| 3/14 at Omaha | 5 | 11 | 29 | .138 | 0 | 0 | 6 | 1 | 12 |
| 3/19 vs Columbus | 4 | 7 | 30 | -.033 | 0 | 0 | 9 | 2 | 9 |
| 3/25 at Grand Rapids | 4 | 11 | 31 | .194 | 1 | 0 | 6 | 1 | 13 |
| 4/4 at Omaha | 3 | 13 | 21 | .429 | 1 | 0 | 6 | 1 | 15 |
| 4/9 at San Diego | 5 | 22 | 48 | .333 | 0 | 0 | 14 | 0 | 22 |
| 4/12 vs Atlanta | 3 | 19 | 34 | .471 | 0 | 1 | 7 | 1 | 20 |
| 4/17 at Grand Rapids | 4 | 24 | 49 | .429 | 1 | 0 | 10 | 1 | 26 |
| 4/19 vs Dallas | 4 | 19 | 31 | .452 | 0 | 0 | 11 | 1 | 20 |
| 4/23 at Orlando | 3 | 9 | 17 | .294 | 0 | 0 | 2 | 2 | 11 |
| 4/26 at Atlanta | 2 | 1 | 6 | .000 | 0 | 0 | 1 | 1 | 2 |
| 5/1 vs Columbus | - | - | - | - | - | - | - | - | - |
| Total | 80 | 284 | 636 | .288 | 8 | 2 | 162 | 26 | 318 |

PLAYER STATISTICS

LYDIA MARTYN

MIDDLE BLOCKER, 6-3
ANDERSON, S.C.



22

CAREER HIGHLIGHTS

- 2024 AVCA All-Central Region First Team selection
- Three-time All-Conference honoree
- Hit at a .357 clip on 158 kills for the Ignite in 2025

MATCH-BY-MATCH STATISTICS

| | SP | K | TA | EFF | SA | AST | DIG | BLK | PTS |
|----------------------|-----------|------------|------------|-------------|----------|----------|-----------|-----------|------------|
| 1/10 at Dallas | 3 | 2 | 6 | .167 | 2 | 0 | 1 | 0 | 4 |
| 1/17 at Columbus | 5 | 10 | 26 | .231 | 0 | 1 | 0 | 11 | 21 |
| 1/22 at Orlando | - | - | - | - | - | - | - | - | - |
| 1/24 vs Omaha | 4 | 9 | 18 | .278 | 0 | 1 | 1 | 1 | 10 |
| 1/29 vs Atlanta | 3 | 5 | 12 | .333 | 0 | 1 | 1 | 2 | 7 |
| 1/31 vs Dallas | 3 | 10 | 16 | .562 | 0 | 0 | 3 | 2 | 12 |
| 2/6 vs Grand Rapids | - | - | - | - | - | - | - | - | - |
| 2/9 at San Diego | 4 | 12 | 24 | .417 | 0 | 0 | 0 | 4 | 16 |
| 2/13 vs Orlando | 2 | 2 | 5 | .000 | 0 | 0 | 1 | 2 | 4 |
| 2/15 vs San Diego | - | - | - | - | - | - | - | - | - |
| 2/19 at Dallas | 3 | 7 | 15 | .400 | 1 | 0 | 3 | 2 | 10 |
| 2/21 at Atlanta | 4 | 8 | 16 | .250 | 2 | 0 | 5 | 2 | 12 |
| 2/27 at Columbus | 3 | 10 | 15 | .667 | 0 | 0 | 1 | 2 | 12 |
| 3/1 vs Omaha | 4 | 9 | 16 | .312 | 0 | 0 | 2 | 1 | 10 |
| 3/8 vs Grand Rapids | - | - | - | - | - | - | - | - | - |
| 3/12 vs Orlando | 3 | 10 | 13 | .769 | 0 | 2 | 3 | 0 | 10 |
| 3/14 at Omaha | 5 | 12 | 25 | .280 | 0 | 0 | 1 | 2 | 14 |
| 3/19 vs Columbus | - | - | - | - | - | - | - | - | - |
| 3/25 at Grand Rapids | - | - | - | - | - | - | - | - | - |
| 4/4 at Omaha | - | - | - | - | - | - | - | - | - |
| 4/9 at San Diego | 3 | 4 | 10 | .400 | 0 | 0 | 1 | 3 | 7 |
| 4/12 vs Atlanta | 1 | 4 | 6 | .500 | 0 | 0 | 0 | 2 | 6 |
| 4/17 at Grand Rapids | - | - | - | - | - | - | - | - | - |
| 4/19 vs Dallas | 4 | 10 | 22 | .136 | 1 | 0 | 2 | 5 | 16 |
| 4/23 at Orlando | - | - | - | - | - | - | - | - | - |
| 4/26 at Atlanta | 4 | 14 | 26 | .423 | 0 | 2 | 4 | 5 | 19 |
| 5/1 vs Columbus | - | - | - | - | - | - | - | - | - |
| Total | 58 | 138 | 271 | .338 | 6 | 7 | 29 | 46 | 190 |

KAYLA LUND

OUTSIDE HITTER, 6-0
PASADENA, CALIF.



23

CAREER HIGHLIGHTS

- Four-time All-American at Pittsburgh
- 2021 AVCA All-American First Team
- Two-time ACC Player of the Year

MATCH-BY-MATCH STATISTICS

| | SP | K | TA | EFF | SA | AST | DIG | BLK | PTS |
|----------------------|-----------|------------|------------|-------------|----------|----------|------------|----------|------------|
| 1/10 at Dallas | 4 | 9 | 23 | .174 | 0 | 0 | 9 | 1 | 10 |
| 1/17 at Columbus | 4 | 0 | 2 | .000 | 0 | 0 | 6 | 0 | 0 |
| 1/22 at Orlando | 4 | 14 | 25 | .480 | 2 | 1 | 13 | 1 | 17 |
| 1/24 vs Omaha | 2 | 1 | 8 | -.375 | 0 | 0 | 2 | 0 | 1 |
| 1/29 vs Atlanta | 4 | 8 | 25 | .000 | 0 | 0 | 15 | 1 | 9 |
| 1/31 vs Dallas | 3 | 10 | 29 | .241 | 2 | 1 | 14 | 0 | 12 |
| 2/6 vs Grand Rapids | - | - | - | - | - | - | - | - | - |
| 2/9 at San Diego | - | - | - | - | - | - | - | - | - |
| 2/13 vs Orlando | - | - | - | - | - | - | - | - | - |
| 2/15 vs San Diego | - | - | - | - | - | - | - | - | - |
| 2/19 at Dallas | - | - | - | - | - | - | - | - | - |
| 2/21 at Atlanta | - | - | - | - | - | - | - | - | - |
| 2/27 at Columbus | 1 | 0 | 0 | .000 | 0 | 0 | 1 | 0 | 0 |
| 3/1 vs Omaha | 3 | 14 | 20 | .650 | 0 | 1 | 10 | 0 | 14 |
| 3/8 vs Grand Rapids | 4 | 13 | 33 | .182 | 0 | 0 | 5 | 0 | 13 |
| 3/12 vs Orlando | 1 | 0 | 0 | .000 | 0 | 0 | 1 | 0 | 0 |
| 3/14 at Omaha | 5 | 11 | 30 | .167 | 0 | 1 | 14 | 0 | 11 |
| 3/19 vs Columbus | 4 | 9 | 33 | .091 | 1 | 0 | 14 | 1 | 11 |
| 3/25 at Grand Rapids | 3 | 2 | 13 | .000 | 0 | 0 | 5 | 0 | 2 |
| 4/4 at Omaha | 2 | 0 | 0 | .000 | 0 | 0 | 1 | 0 | 0 |
| 4/9 at San Diego | 5 | 14 | 46 | .109 | 0 | 0 | 26 | 0 | 14 |
| 4/12 vs Atlanta | 3 | 8 | 25 | .200 | 0 | 0 | 11 | 0 | 8 |
| 4/17 at Grand Rapids | 4 | 3 | 11 | -.182 | 1 | 1 | 10 | 0 | 4 |
| 4/19 vs Dallas | 4 | 0 | 0 | .000 | 0 | 0 | 2 | 0 | 0 |
| 4/23 at Orlando | 2 | 0 | 0 | .000 | 0 | 0 | 2 | 0 | 0 |
| 4/26 at Atlanta | 4 | 4 | 8 | .250 | 0 | 1 | 11 | 1 | 5 |
| 5/1 vs Columbus | - | - | - | - | - | - | - | - | - |
| Total | 66 | 120 | 332 | .178 | 6 | 6 | 171 | 5 | 131 |

EMMA CLOTHIER

MIDDLE BLOCKER, 6-2
CARROLLTON, TEXAS



26

CAREER HIGHLIGHTS

- 2023 American Conference Player of the Year at SMU
- 3x All-Conference Team Nominations at FSU
- Spent the last 2.5 years playing professionally overseas

MATCH-BY-MATCH STATISTICS

| | SP | K | TA | EFF | SA | AST | DIG | BLK | PTS |
|----------------------------|-----------|-----------|-----------|-------------|----------|----------|----------|----------|-----------|
| Joined Indy on 3/26 | | | | | | | | | |
| 4/4 at Omaha | 3 | 1 | 10 | .000 | 0 | 1 | 2 | 0 | 1 |
| 4/9 at San Diego | 3 | 2 | 6 | .333 | 0 | 1 | 4 | 0 | 2 |
| 4/12 vs Atlanta | 3 | 3 | 11 | .182 | 0 | 0 | 2 | 3 | 6 |
| 4/17 at Grand Rapids | 4 | 6 | 15 | .333 | 0 | 1 | 0 | 1 | 7 |
| 4/19 vs Dallas | - | - | - | - | - | - | - | - | - |
| 4/23 at Orlando | 3 | 7 | 14 | .500 | 1 | 0 | 0 | 1 | 9 |
| 4/26 at Atlanta | - | - | - | - | - | - | - | - | - |
| 5/2 vs Columbus | 2 | 2 | 3 | .667 | 1 | 0 | 0 | 0 | 3 |
| Total | 18 | 21 | 59 | .305 | 2 | 3 | 8 | 5 | 28 |

ALEXANDRA BOTEZAT

MIDDLE BLOCKER, 6-6
CASTELFRANCO VENETO, ITALY



28

CAREER HIGHLIGHTS

- 2015 U18 World Champion
- 2018 CEV Club Champion - UYBA Busto Arsizio
- Coming off a 170-point season with Volley Talmassons

MATCH-BY-MATCH STATISTICS

| | SP | K | TA | EFF | SA | AST | DIG | BLK | PTS |
|----------------------|-----------|-----------|-----------|-------------|----------|----------|-----------|-----------|-----------|
| 1/10 at Dallas | - | - | - | - | - | - | - | - | - |
| 1/17 at Columbus | 5 | 3 | 10 | .300 | 0 | 1 | 2 | 4 | 7 |
| 1/22 at Orlando | - | - | - | - | - | - | - | - | - |
| 1/24 vs Omaha | 3 | 4 | 10 | .400 | 0 | 0 | 0 | 0 | 4 |
| 1/29 vs Atlanta | 2 | 3 | 6 | .167 | 0 | 1 | 1 | 0 | 3 |
| 1/31 vs Dallas | - | - | - | - | - | - | - | - | - |
| 2/6 vs Grand Rapids | - | - | - | - | - | - | - | - | - |
| 2/9 at San Diego | 4 | 5 | 12 | .417 | 0 | 0 | 5 | 1 | 6 |
| 2/13 vs Orlando | - | - | - | - | - | - | - | - | - |
| 2/15 vs San Diego | - | - | - | - | - | - | - | - | - |
| 2/19 at Dallas | - | - | - | - | - | - | - | - | - |
| 2/21 at Atlanta | 1 | 0 | 0 | 0 | 1 | 0 | 0 | 0 | 0 |
| 2/27 at Columbus | - | - | - | - | - | - | - | - | - |
| 3/1 vs Omaha | - | - | - | - | - | - | - | - | - |
| 3/8 vs Grand Rapids | 4 | 7 | 11 | .545 | 1 | 1 | 3 | 4 | 12 |
| 3/12 vs Orlando | 3 | 1 | 4 | .000 | 1 | 0 | 2 | 0 | 2 |
| 3/14 at Omaha | - | - | - | - | - | - | - | - | - |
| 3/19 vs Columbus | 4 | 5 | 11 | .364 | 0 | 0 | 2 | 2 | 7 |
| 3/25 at Grand Rapids | 4 | 2 | 9 | .222 | 0 | 0 | 1 | 1 | 3 |
| 4/4 at Omaha | - | - | - | - | - | - | - | - | - |
| 4/9 at San Diego | - | - | - | - | - | - | - | - | - |
| 4/12 vs Atlanta | - | - | - | - | - | - | - | - | - |
| 4/17 at Grand Rapids | - | - | - | - | - | - | - | - | - |
| 4/19 vs Dallas | - | - | - | - | - | - | - | - | - |
| 4/23 at Orlando | - | - | - | - | - | - | - | - | - |
| 4/26 at Atlanta | - | - | - | - | - | - | - | - | - |
| 5/1 vs Columbus | 4 | 4 | 9 | .444 | 1 | 0 | 0 | 2 | 7 |
| Total | 34 | 34 | 82 | .354 | 4 | 3 | 16 | 14 | 52 |

PLAYER STATISTICS

MIA TUANIGA

SEッター, 5-9
LONG BEACH, CALIF.



91

CAREER HIGHLIGHTS

- Two-time Pac-12 All-Conference Team
- 2022 AVCA All-American Honorable Mention
- Two-time AVCA All-Pacific South Region Team

MATCH-BY-MATCH STATISTICS

| | SP | K | TA | EFF | SA | AST | DIG | BLK | PTS |
|----------------------|-----------|-----------|------------|-------------|-----------|--------------|------------|-----------|-----------|
| 1/10 at Dallas | 3 | 4 | 6 | .667 | 0 | 32 | 4 | 0 | 4 |
| 1/17 at Columbus | 5 | 3 | 4 | .750 | 2 | 61 | 10 | 0 | 5 |
| 1/22 at Orlando | 3 | 1 | 4 | .250 | 0 | 28 | 2 | 1 | 2 |
| 1/24 vs Omaha | 4 | 3 | 6 | .333 | 1 | 46 | 3 | 2 | 6 |
| 1/29 vs Atlanta | 4 | 1 | 5 | .000 | 2 | 39 | 7 | 2 | 5 |
| 1/31 vs Dallas | 3 | 2 | 3 | .667 | 2 | 38 | 7 | 1 | 5 |
| 2/6 vs Grand Rapids | 4 | 2 | 7 | .143 | 1 | 56 | 3 | 1 | 4 |
| 2/9 at San Diego | 4 | 1 | 3 | .000 | 0 | 41 | 9 | 1 | 2 |
| 2/13 vs Orlando | 3 | 2 | 4 | .500 | 2 | 47 | 8 | 0 | 4 |
| 2/15 vs San Diego | 3 | 2 | 4 | .250 | 0 | 38 | 8 | 2 | 4 |
| 2/19 at Dallas | 3 | 3 | 4 | .750 | 1 | 33 | 9 | 1 | 5 |
| 2/21 at Atlanta | 4 | 0 | 2 | -.500 | 0 | 54 | 14 | 0 | 0 |
| 2/27 at Columbus | 3 | 1 | 3 | .333 | 0 | 36 | 7 | 0 | 1 |
| 3/1 vs Omaha | 4 | 3 | 5 | .600 | 0 | 52 | 11 | 0 | 3 |
| 3/8 vs Grand Rapids | 4 | 3 | 5 | .600 | 1 | 50 | 12 | 0 | 4 |
| 3/12 vs Orlando | 3 | 1 | 2 | .500 | 0 | 43 | 10 | 1 | 2 |
| 3/14 at Omaha | 5 | 6 | 13 | .231 | 1 | 63 | 12 | 0 | 7 |
| 3/19 vs Columbus | 4 | 2 | 4 | .500 | 3 | 37 | 14 | 2 | 7 |
| 3/25 at Grand Rapids | 3 | 0 | 0 | .000 | 1 | 8 | 2 | 0 | 1 |
| 4/4 at Omaha | 3 | 0 | 3 | .000 | 2 | 37 | 9 | 0 | 2 |
| 4/9 at San Diego | 5 | 6 | 8 | .750 | 2 | 56 | 16 | 0 | 8 |
| 4/12 vs Atlanta | 3 | 0 | 2 | .000 | 0 | 39 | 10 | 1 | 1 |
| 4/17 at Grand Rapids | 2 | 0 | 0 | .000 | 0 | 5 | 0 | 0 | 0 |
| 4/19 vs Dallas | 3 | 4 | 6 | .667 | 2 | 55 | 9 | 0 | 6 |
| 4/23 at Orlando | 3 | 3 | 5 | .400 | 1 | 40 | 11 | 0 | 4 |
| 4/26 at Atlanta | 3 | 2 | 5 | .200 | 0 | 32 | 6 | 0 | 2 |
| 5/1 vs Columbus | - | - | - | - | - | - | - | - | - |
| Total | 93 | 55 | 113 | .389 | 24 | 1,066 | 213 | 15 | 94 |

MATCH-BY-MATCH STARTERS

| MATCH | OH | OH | OPP | MB | MB | S | L |
|----------------------|-----------------|-------------|-----------|-----------|-------------|------------|-----------|
| 1/11 at Dallas | E. Bush | A. DeBeer | A. Tealer | B. Mohler | C. Cresse | A. Havili | E. Scott |
| 1/17 at Columbus | L. Member-Meneh | A. DeBeer | A. Tealer | L. Martyn | A. Botezat | M. Tuaniga | E. Scott |
| 1/22 at Orlando | E. Bush | K. Lund | C. Hannah | B. Mohler | C. Cresse | A. Havili | E. Scott |
| 1/24 vs Omaha | L. Member-Meneh | A. DeBeer | A. Tealer | L. Martyn | A. Botezat | M. Tuaniga | E. Scott |
| 1/29 vs Atlanta | L. Member-Meneh | K. Lund | A. Tealer | B. Mohler | A. Botezat | M. Tuaniga | E. Scott |
| 1/31 vs Dallas | L. Member-Meneh | K. Lund | A. Tealer | B. Mohler | L. Martyn | M. Tuaniga | E. Scott |
| 2/6 vs Grand Rapids | L. Member-Meneh | A. DeBeer | A. Tealer | B. Mohler | C. Cresse | M. Tuaniga | E. Scott |
| 2/9 at San Diego | L. Member-Meneh | A. DeBeer | C. Hannah | L. Martyn | A. Botezat | M. Tuaniga | E. Scott |
| 2/13 vs Orlando | L. Member-Meneh | A. DeBeer | A. Tealer | B. Mohler | L. Martyn | M. Tuaniga | E. Scott |
| 2/15 vs San Diego | L. Member-Meneh | A. DeBeer | A. Tealer | B. Mohler | C. Cresse | M. Tuaniga | E. Scott |
| 2/19 at Dallas | L. Member-Meneh | A. DeBeer | C. Hannah | B. Mohler | L. Martyn | M. Tuaniga | E. Scott |
| 2/21 at Atlanta | L. Member-Meneh | A. DeBeer | C. Hannah | B. Mohler | L. Martyn | M. Tuaniga | E. Scott |
| 2/27 at Columbus | L. Member-Meneh | A. DeBeer | C. Hannah | B. Mohler | L. Martyn | M. Tuaniga | E. Scott |
| 3/1 vs Omaha | E. Bush | A. DeBeer | C. Hannah | B. Mohler | L. Martyn | M. Tuaniga | E. Scott |
| 3/8 vs Grand Rapids | L. Member-Meneh | A. DeBeer | A. Tealer | B. Mohler | A. Botezat | M. Tuaniga | E. Scott |
| 3/12 vs Orlando | L. Member-Meneh | A. DeBeer | C. Hannah | L. Martyn | A. Botezat | M. Tuaniga | E. Scott |
| 3/14 vs Omaha | L. Member-Meneh | A. DeBeer | A. Tealer | L. Martyn | B. Mohler | M. Tuaniga | E. Scott |
| 3/19 vs Columbus | K. Lund | A. DeBeer | A. Tealer | B. Mohler | A. Botezat | M. Tuaniga | E. Scott |
| 3/25 at Grand Rapids | L. Member-Meneh | K. Lund | C. Hannah | C. Cresse | A. Botezat | M. Tuaniga | E. Scott |
| 4/4 at Omaha | L. Member-Meneh | A. DeBeer | A. Tealer | C. Cresse | E. Clothier | M. Tuaniga | E. Scott |
| 4/9 at San Diego | L. Member-Meneh | K. Lund | A. Tealer | C. Cresse | E. Clothier | M. Tuaniga | E. Scott |
| 4/12 vs Atlanta | L. Member-Meneh | K. Lund | A. Tealer | C. Cresse | E. Clothier | M. Tuaniga | E. Scott |
| 4/17 at Grand Rapids | L. Member-Meneh | A. DeBeer | A. Tealer | C. Cresse | E. Clothier | A. Havili | E. Scott |
| 4/19 vs Dallas | L. Member-Meneh | A. DeBeer | A. Tealer | C. Cresse | L. Martyn | M. Tuaniga | E. Scott |
| 4/23 at Orlando | L. Member-Meneh | A. DeBeer | A. Tealer | J. Keene | E. Clothier | M. Tuaniga | E. Scott |
| 4/26 at Atlanta | L. Member-Meneh | A. DeBeer | C. Hannah | C. Cresse | L. Martyn | A. Havili | E. Scott |
| 5/1 vs Columbus | E. Bush | T. Landfair | C. Hannah | C. Cresse | E. Clothier | A. Havili | E. Halter |