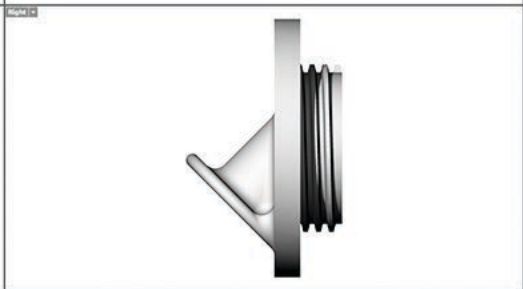
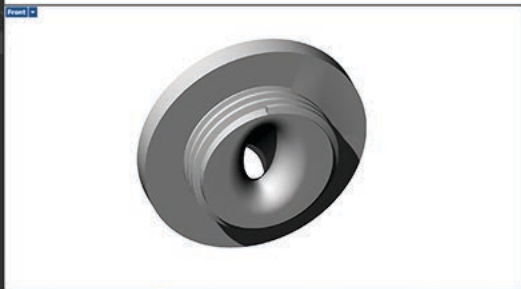
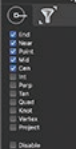


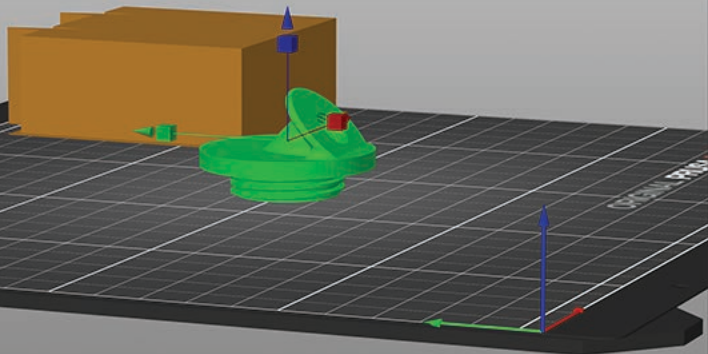


Command



CSnap




Simple
Advanced
Expert

Print settings:

 0.20mm SOLUBLE INTERFACE

Filament:

- Prusament PETG
- Prusament PETG
- Prusament PETG
- Prusament PETG
- Generic HIPS

Printer:

 Original Prusa MK3.5 MMU3 0.4 nozzle

Supports: Everywhere

Infill: 15%

Brim:

Purging volumes...

Name	Extruder
guide_03.stl	default
Paint-on supports	

World coordinates	X	Y	Z
Position:	125	105	12.11 mm
Rotate (relative):	0	0	0 °
Scale factors:	100	100	100 %
Size [World]:	40	40	24.23 mm
<input type="checkbox"/> Inches			

Info

Size: 40.00 x 40.00 x 24.23 Volume: 8810.36

Facets: 31070 (1 shell)

 96 open edges

 Auto-repaired 72 errors



WARNING:
Bed temperatures for the used filaments differ significantly.

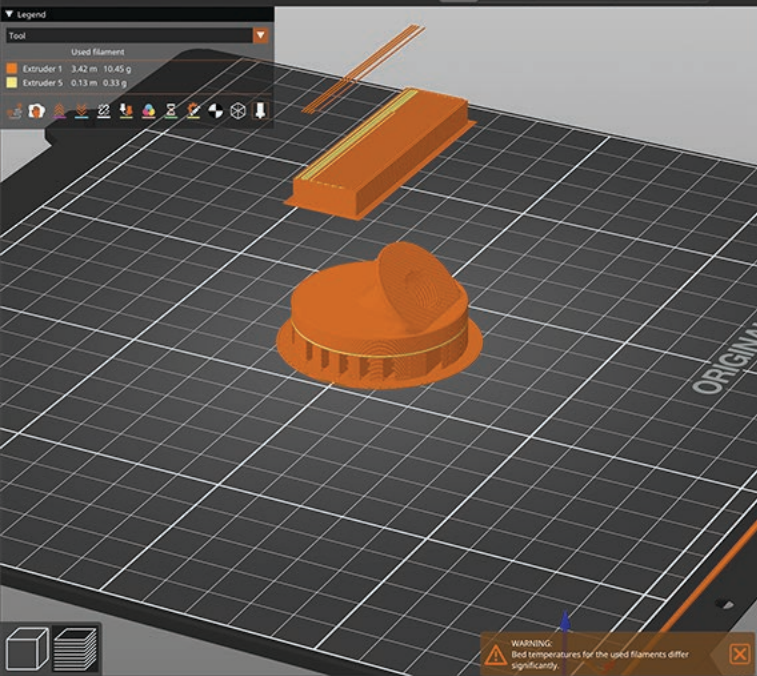


Legend

Tool

Used filament

Extruder 1 3.42 m 10.45 g
 Extruder 5 0.13 m 0.33 g



WARNING:
 Bed temperatures for the used filaments differ significantly.

24.20
(121)

Simple Advanced Expert

Print settings: 0.20mm SOLUBLE INTERFACE (modified)

Filament:

Prusament PETG
 Prusament PETG
 Prusament PETG
 Prusament PETG
 Generic HIPS

Printer:

Original Prusa MK3.5 MMU3 0.4 nozzle

Supports: For support enforcers only

Infill: 15%

Brim:

Purging volumes...

Name	Extruder
guide_03.stl	default
Paint-on supports	

Object manipulation

World coordinates

Position:	125	105	12.11	mm
Rotate (relative):	0	0	0	°
Scale factors:	100	100	100	%
Size (World):	40	40	24.23	mm

inches

Info

Size: 40.00 x 40.00 x 24.23 Volume: 8810.36

Facets: 31070 (1 shell)

96 open edges

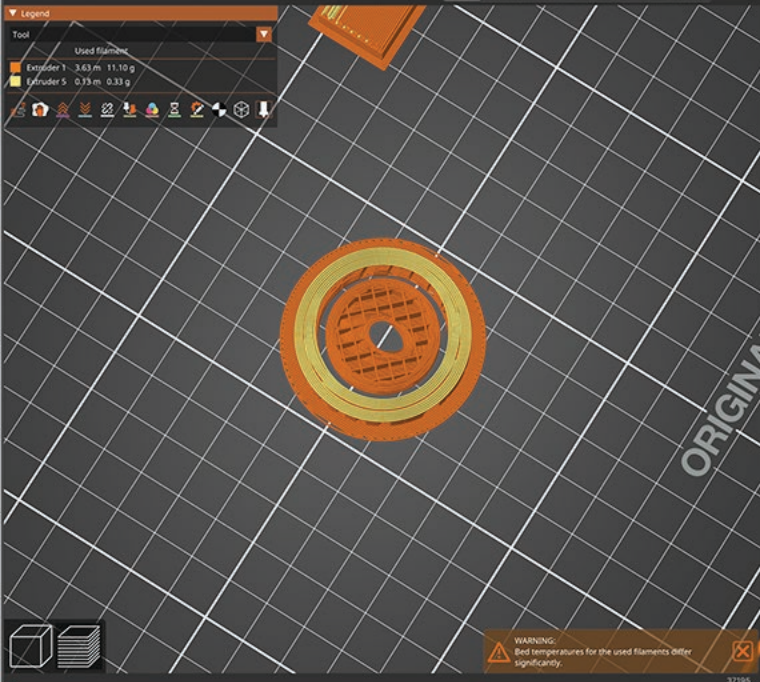
Auto-repaired 72 errors

Sliced info

Used Filament (g):	10.78
- Filament at extruder 1	10.45 (203.45)
(including spool)	
- Filament at extruder 5	0.33 (230.33)
(including spool)	
Used Filament (m):	3.55
- objects	2.73
- wipe tower	0.83
Used Filament (mm ³)	8544.68

Export G-code

98014



Legend

Tool

Used filament

- Extruder 1 3.63 m 11.10 g
- Extruder 5 0.33 m 0.33 g

Icons for various tools and settings are visible below the legend.

Simple
Advanced
Expert

Print settings:

0.20mm SOLUBLE INTERFACE (modified)

Filament:

- Prusament PETG
- Prusament PETG
- Prusament PETG
- Prusament PETG
- Generic HIPS

Printer:

Original Prusa MK3.5 MMU3 0.4 nozzle

Supports: For support enforcers only

Infill: 25% Brim: Purging volumes...

Name: Extruder

guide_03.stl default

Paint-on supports

Object manipulation

World coordinates X Y Z

Position: 125 105 12.11 mm

Rotate (relative): 0 0 0 °

Scale factors: 100 100 100 %

Size [World]: 40 40 24.23 mm

Inches

Info

Size: 40.00 x 40.00 x 24.23 Volume: 8810.36

Facets: 31070 (1 shell)

96 open edges

Auto-repaired 72 errors

Sliced Info

Used Filament (g): 11.43

- Filament at extruder 1 11.10 (204.10)
- Filament at extruder 5 0.33 (230.33)

Used Filament (m): 3.76

- objects 2.94
- wipe tower 0.83

Used Filament (mm³) 9055.72

Export G-code

WARNING: Bed temperatures for the used filaments differ significantly.

60°



45°