

Search this website ...



### CATEGORIES

Select Category

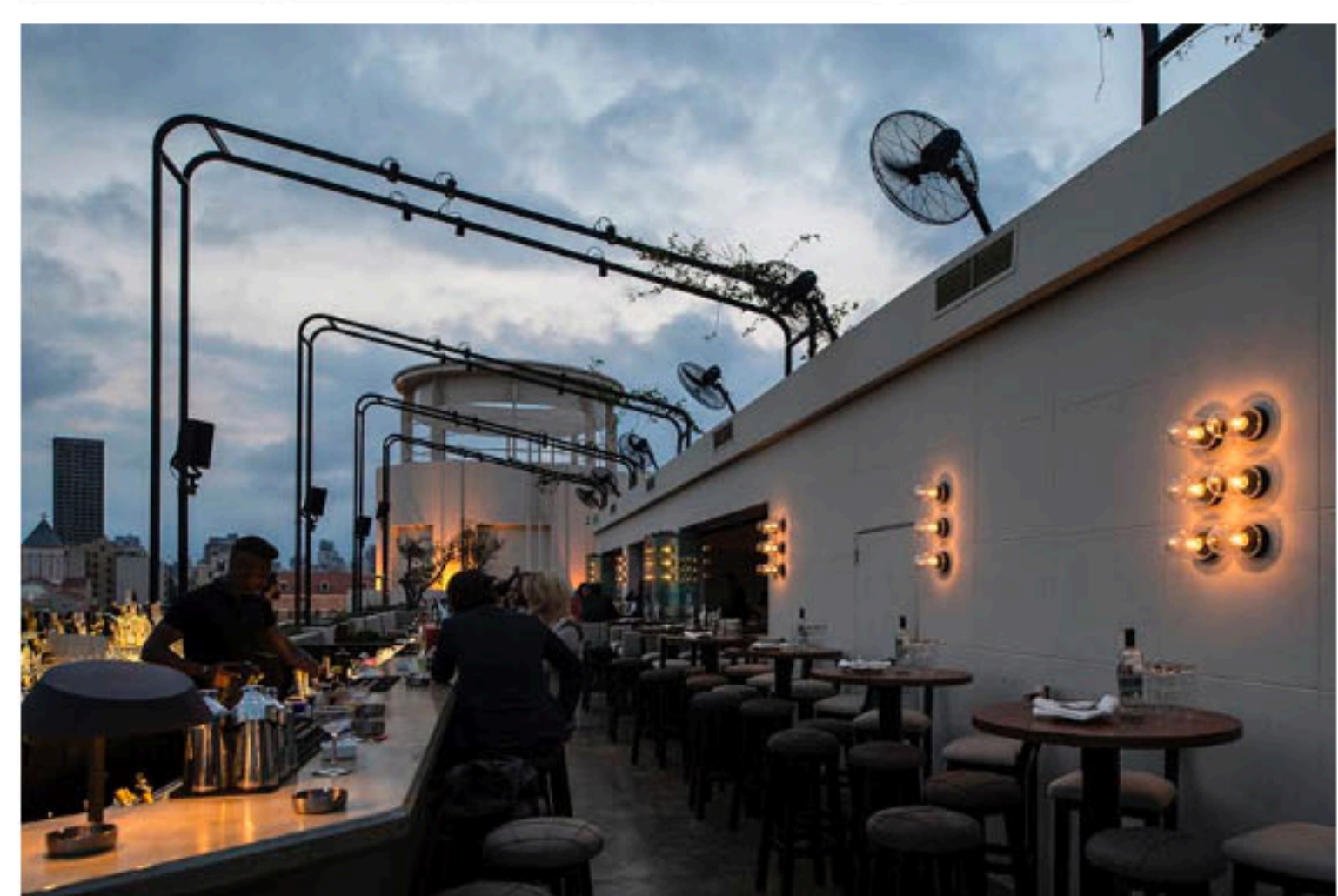
### BROWSE BY TYPE

- » [Oceania](#)
- » [USA](#)
- » [Educational](#)
- » [London](#)
- » [Urban Planning](#)
- » [Featured](#)
- » [Canada](#)
- » [Spain](#)
- » [France](#)
- » [Public](#)
- » [Cultural](#)
- » [Design](#)
- » [Australia](#)
- » [Japan](#)
- » [Residential](#)
- » [The Netherlands](#)
- » [New York](#)
- » [Houses](#)
- » [Interiors](#)
- » [Offices](#)

## Capitole Restaurant & Lounge By Adrian Perez

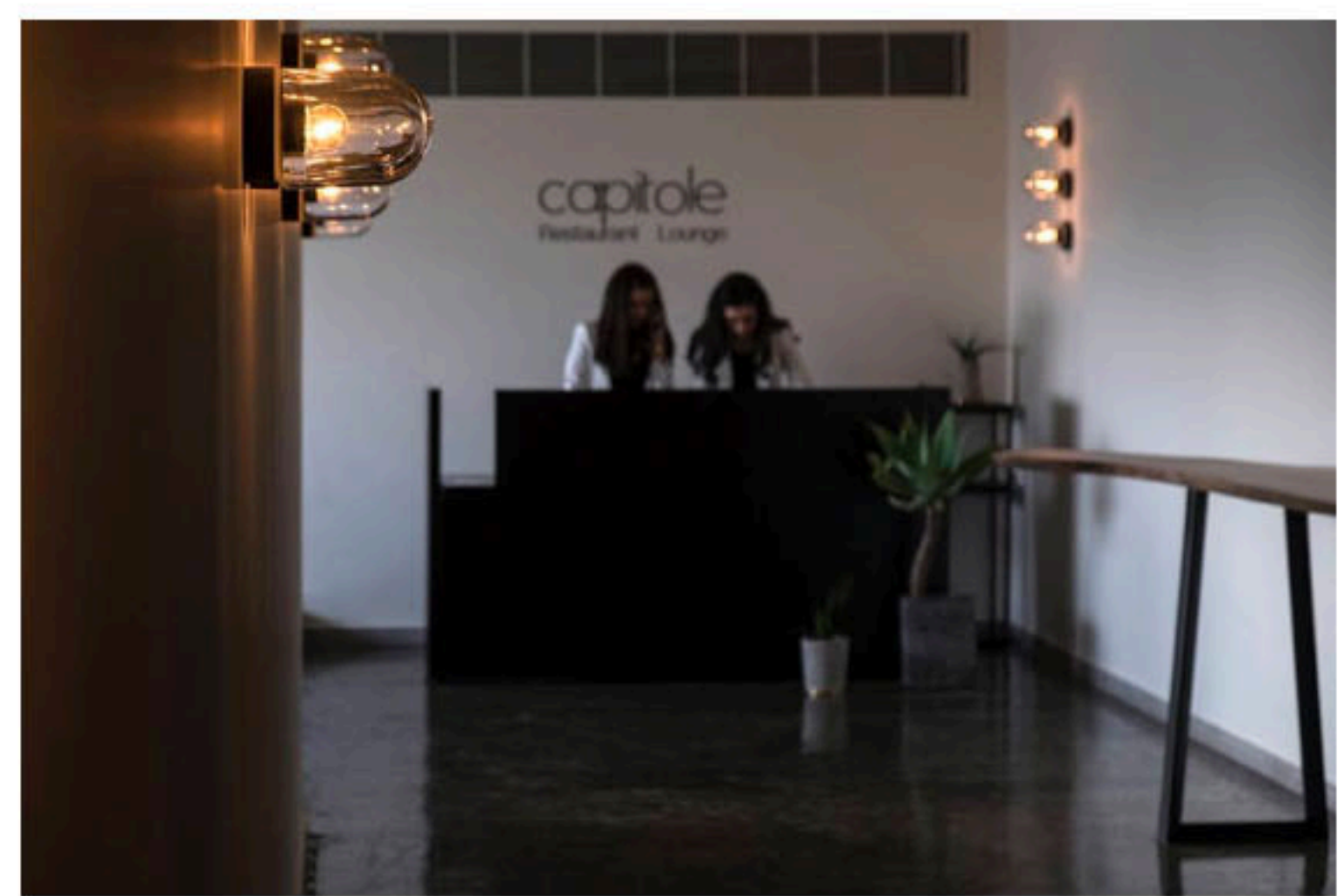
July 18, 2016  
Tagged With: Interiors, Lebanon, pslab

Facebook Twitter Google+ LinkedIn Pinterest



© Ieva Saudargaitė

Located on a rooftop of a historical building in Beirut's Central District, that was initially built to be a theatre, later transformed into a cinema and offices, Capitole is a summer restaurant and lounge.



© Ieva Saudargaitė

Wanting to go back in history and translate the theatrical DNA of the place, interior designer Adrian Perez created several platforms / floor levels to define the bar and dining sitting areas, building various scenes throughout the space.

A self-lit circular bar is placed at the end on a higher platform, creating a mirror effect with a previously installed water tank located at the other end of the long rectangular shaped space.



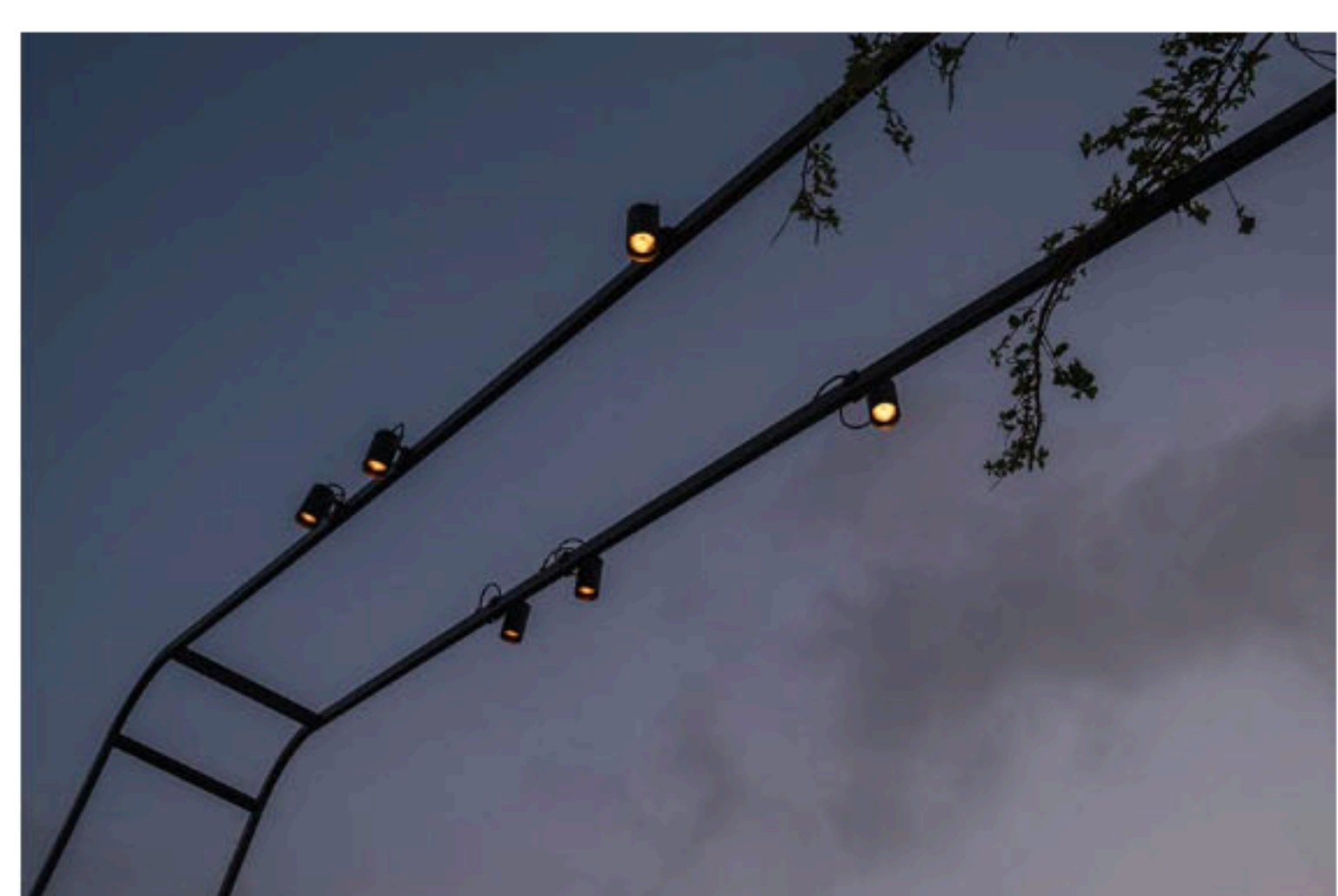
© Ieva Saudargaitė

Collaborating closely with Adrian Perez and Capitole's owners and as a response to an initial brief of a casual atmosphere and a multifunctional space, PSLAB developed a lighting solution for the rooftop. The challenges were mostly the elongated shape of the rooftop, the relationship between the indoor and outdoor spaces and mostly the restrictions due to the historical nature and location of the building.



© Ieva Saudargaitė

A technical lighting approach was created using metal structures, wrapping and defining the terrace. The rods were used as a holding structure for dangling bougainvillea and support for speakers and clip on directional projectors.



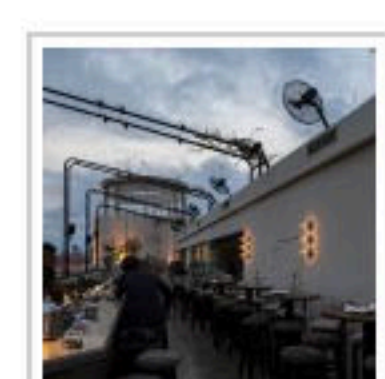
© Ieva Saudargaitė

As a decorative layer, a total of 69 wall mounted glass and powder coated steel sconces were placed on the indoor and outdoor walls, forming playful lighting grids. The wall appliques were rated IP65 for outdoor use and the glass dome shaped heads made from borosilicate glass for security purposes.

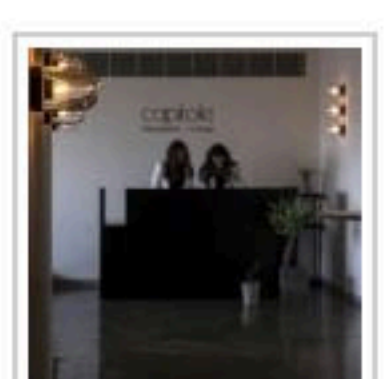
Rusted steel and powder-coated table lamps were designed and built to be integrated in the structure of both the indoor and outdoor concrete bars.

#### Project Details:

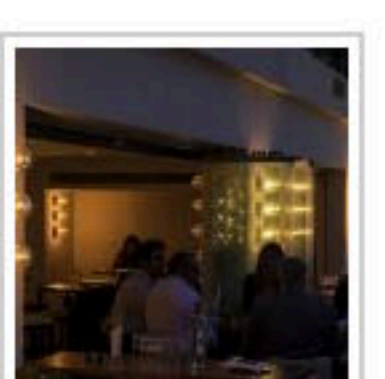
Location: Beirut, [Lebanon](#)  
Design: Adrian Perez  
Lighting Design: [PSLAB](#)  
Photographs: Ieva Saudargaitė



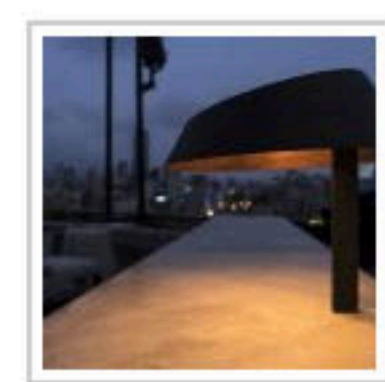
© Ieva Saudargaitė



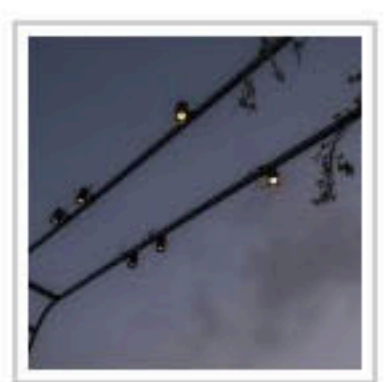
© Ieva Saudargaitė



© Ieva Saudargaitė



© Ieva Saudargaitė



© Ieva Saudargaitė

Facebook Twitter Google+ LinkedIn Pinterest

« Pacific ocean cool: when American Arts and Crafts met Japanese modernism  
17 of Le Corbusier works named as UN world heritage sites »



### LEAVE A REPLY

Your email address will not be published.

Comment

Name

Email

Website

POST COMMENT

### IN THE NEWS

Studio Magazine – Call For Papers For Issue #11  
July 19, 2016

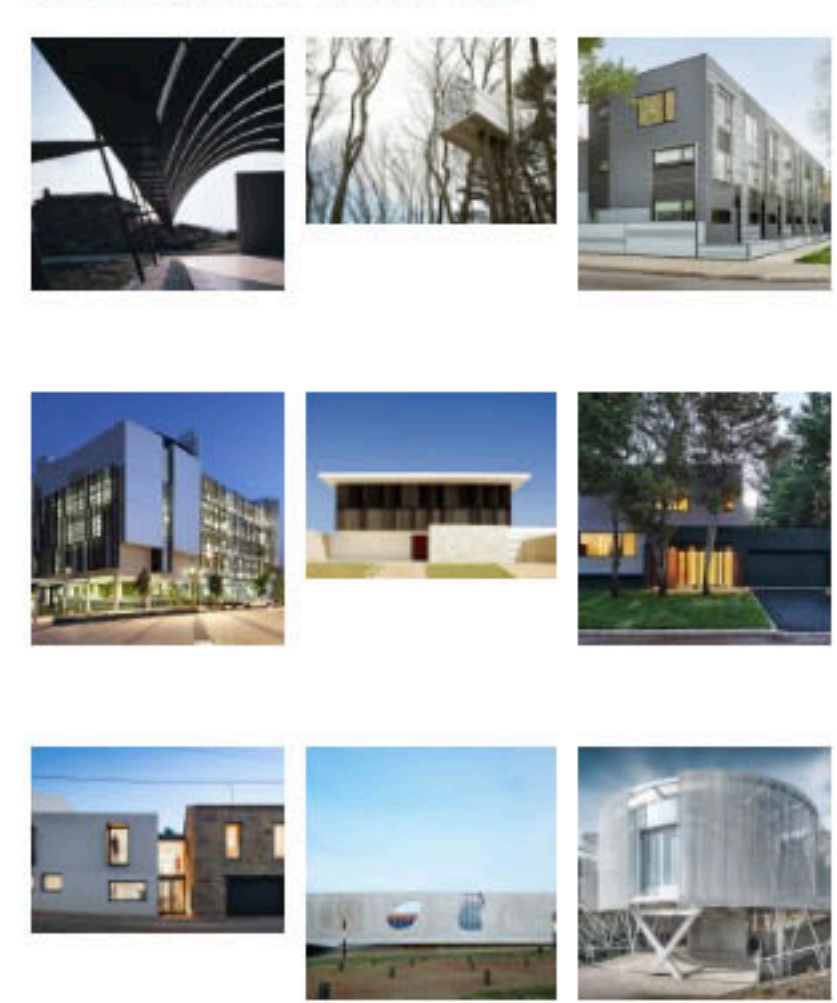
17 Of Le Corbusier Works Named As UN World Heritage Sites  
July 19, 2016

One Of The Best Examples Of Modern Architecture Is A Former Livestock Pavilion In North Carolina  
July 18, 2016

Zaha Hadid's 600 Collins Street Awarded Planning Approval By The Victorian Government  
July 18, 2016

HOUSE 1: A Collaborative Installation At EPFL Campus In Lausanne  
July 18, 2016

### FEATURED PROJECTS



### FEATURED ARTICLES

Driven To Distraction: The Norway Road Trip Where Cool Design Meets Dramatic Scenery

What To Consider Before Buying A Freestanding Bath

Pacific Ocean Cool: When American Arts And Crafts Met Japanese Modernism

### ARCHITECTURE COMPETITIONS

Call For Submission – Marché De Montmartre: Abbesses And Chateau Rouge Markets

Call For Submission – Trans Siberian Pit Stops

MORE COMPETITIONS

### ARTICLES BY TYPE

Select Category

### FOLLOW US ON



Architecture Lab is the best source for architecture, competitions, videos and news coverage. We are currently based in Toronto. You can check also our new website [www.designaid.net](#)