

www.darcmagazine.com
darc

#20 DECORATIVE LIGHTING
IN ARCHITECTURE
MAR/APR 2017



HIDEKI YOSHIMOTO

OUTDOOR LIGHTING

REDWOODS TREETWALK

A New Lease of Life

A derelict Grade II Listed house presented a challenge to UK-based STUDIOAida in transforming the space into a home fit for a young family.

With a focus on residential interior design, STUDIOAida brought a wealth of experience to the challenge of transforming a derelict Grade II listed house into a home for a family with two young children. Having worked closely in the past with heritage consultants MVHC, STUDIOAida are well versed in working on listed buildings and were able to ensure their ideas would be considered a welcome improvement to

the property.

Studio Founder Aida Bratovic told darc: "The clients bravely embarked on this massive refurbishment project, which was divided into several stages to work around them as they lived in the property while the work was going on."

The interior features an original listed panelling that make some parts of the house extremely dark. As a result, lighting played

a huge part in the design. STUDIOAida called upon the expertise of PSLab in making such decisions around how to best execute the decorative lighting elements. Bratovic said: "Having worked with PSLab on several projects in the past, they were our first point of call particularly because of the entrance hall that is double height, and was quite dark and unwelcoming." In wanting a scheme that was exciting, yet



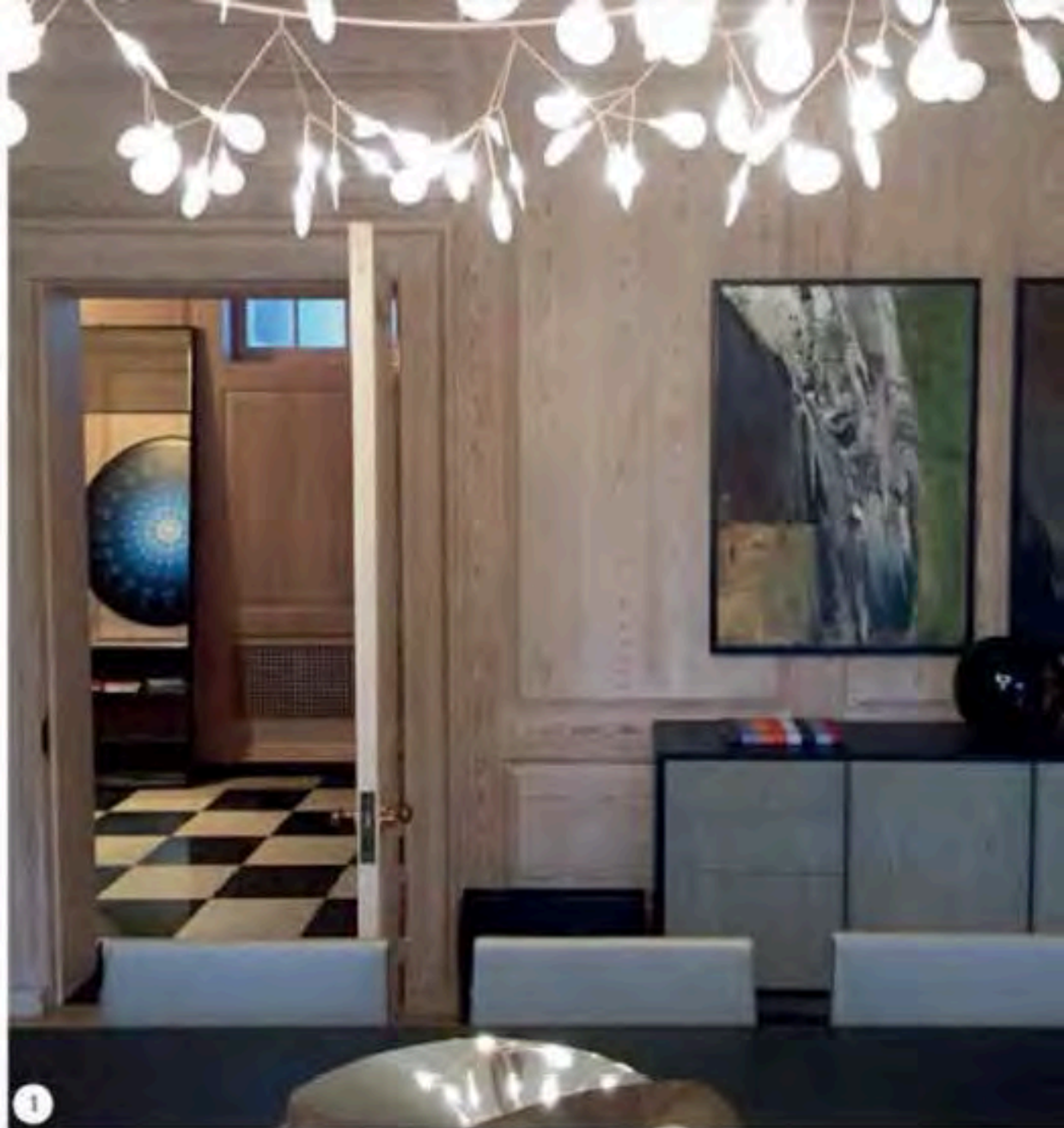
elegant and practical, the challenge was to adequately light the minimal monochrome artwork from a considerable height, while providing a striking piece at the entrance of the home that would reflect the clients' spirit and artistic personalities.

"PSLab was commissioned to design and supply the entrance hall ceiling lights, while the rest of the lighting was done by us. We like mixing different brands for a more eclectic and lived in look."

STUDIOAida decided to go for striking pieces that would become focal points in many rooms, and the panelling provided the perfect backdrop for them. The house is set in an acre of garden so in the dining room that opens onto a garden, the idea was to bring the outdoors inside - Moooi's Heracleum chandelier provided the perfect solution. "It offers a soft glow and even when not lit, the delicate white petals are beautifully juxtaposed with the panelling," said Bratovic.

With the clients living on site while work was taking place, consistency and careful planning in the stages of this project was essential. "Since we were not engaged before the construction started, some of the lights had to be retro fixed to a finished ceiling, and so had to be fixed from the floor above," Bratovic continued. "We are architects as well as interior designers, so our technical background is essential when coming up with solutions. PSLab's lights also came with a neat video showing point by point installation, much to a contractor's delight!"

The lighting of this property completely transformed a derelict and uninviting space into a real home. "It plays an extremely important part. One can have beautifully designed spaces filled with the most wonderful furniture but if inadequately lit, it will not be noticeable or enjoyable. Lighting should be practical first but we



1



2

Previous Page Mesa Luminos by Conardi in satin bronze and amber glow in the entrance hall, while PSLab's bespoke ceiling fixtures provide another dynamic to the space. This Page 1. Moooi's Heracleum chandelier adding a sparkle in the dining room 2. Bedside tables featuring CTO Lighting's Array lamps in satin brass.