

MCPS and GMS

School Reopening Plans



Meeting Agenda

- Phase in timeline-Principal Dolan
- Student schedule for in person-Principal Dolan
- Instructional Model-Principal Dolan
- Safety-Assistant Principal Robinson
- Transportation-Assistant Principal Robinson
- Student Expectations-Assistant Principal Bean
- Communication with kids-Assistant Principal Bean



Phase in Timeline

Special Education Programs

March 15 Return

All Grade Levels

- Bridge
- METS

Grades 6 only:

- Autism Resource Services
- Learning and Academic Disabilities (LAD)
- Hours-based (HBS) LAD

4 days per week, every week.
Monday, Tuesday, Thursday,
Friday; Wednesdays remain
virtual for all students

Special Education Programs

Phase 1.2- no later than April 6

Grade 6

- All students

Grades 7, 8

- Autism Resource Services
- Learning and Academic Disabilities (LAD)
- Hours-based (HBS) LAD

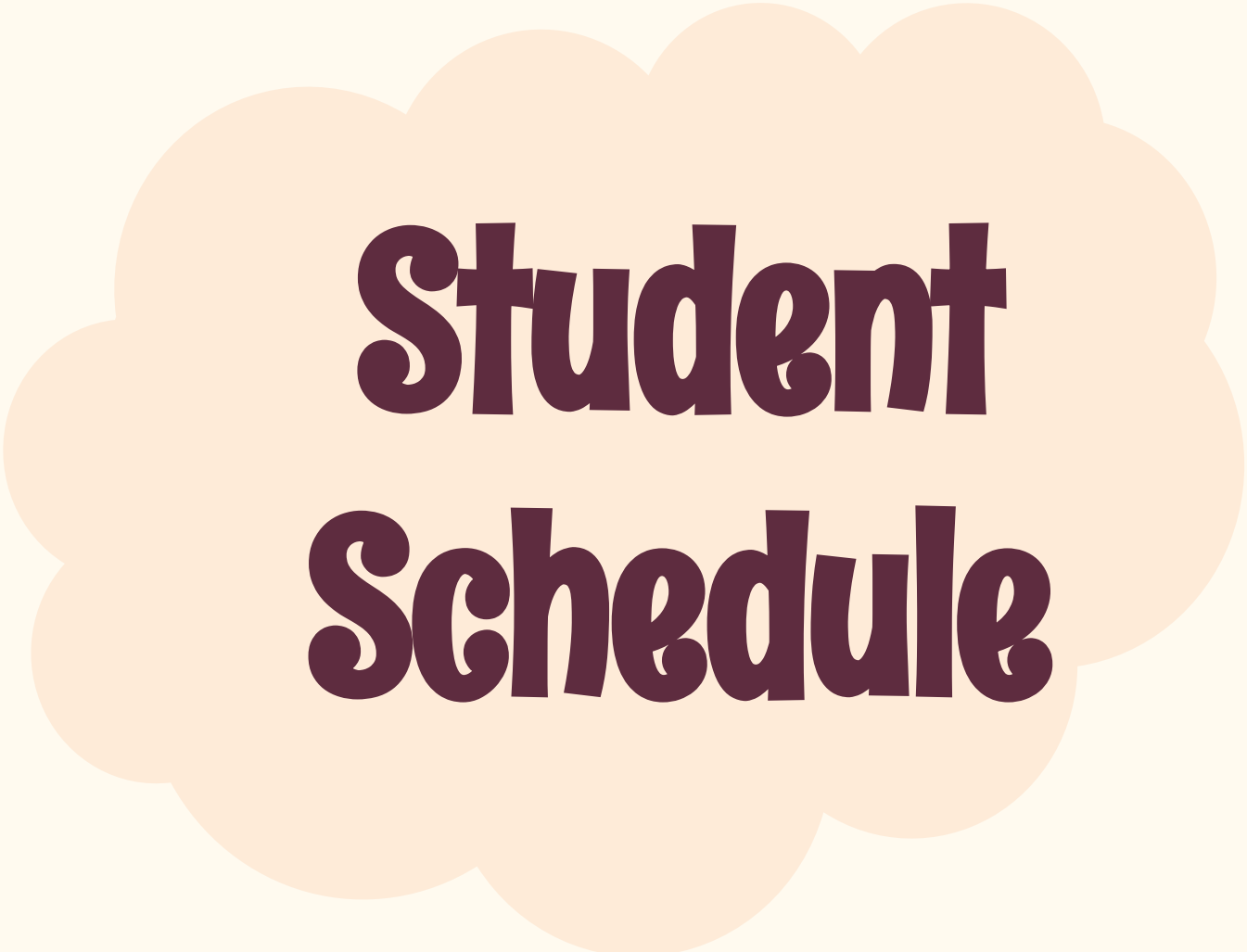
4 days per week, every week.
Monday, Tuesday, Thursday,
Friday; Wednesdays remain
virtual for all students

MCPS Timeline of Phases

- **March 1**-No GMS students return
- **March 15-Phase 1.1**-Bridge, ARS, METS, 6th grade LAD (**4 days a week**)
- **No later than April 6-Phase 1.2** -6th grade students, ARS 7/8, LAD 7/8
- **No later than April 19-Phase 2.1**-8th grade students
- **No later than April 26-Phase 2.2**-7th grade students
- Currently, we have about **300** students total who have opted in for in-person learning. It is about **100** students per grade.
- The number of students returning may increase or decrease if parents change their minds. This could impact the GMS plan.

Phases for Return (Dates can change)

Group 1.1 (March 15)	Group 1.2 (No later than April 6)
<ul style="list-style-type: none">• Bridge-all grades• 6th grade Autism Resource Program• METS-all grades• 6th grade LAD students	<ul style="list-style-type: none">• Grade 6• 7th and 8th grade LAD students• 6th and 8th grade Autism Resource Program
Group 2.1 (No later than April 19)	Group 2.2 (No later than April 26)
<ul style="list-style-type: none">• Grade 8	<ul style="list-style-type: none">• Grade 7



Student Schedule



- Daily Bell Schedule from virtual learning will continue. Bell Schedule will remain the same (i.e. first block will start at 9:00 am).
- However, school day will revert back to “normal” schedule to accommodate transportation services.
- In-person school day starts at 8:15 am and ends at 3:00.
- Wednesday-All schools are virtual except in a four day week.

GMS Student Schedule for 2020-2021:

Time	Day 1	Day 2	Day 3	Day 4	Day 5
8:45-9:00	Student Preparation (Organize materials for the day, log into Canvas, Zoom)				
BLOCK 1 9:00-10:00	Period 1	Period 5	Homework Time	Period 1	Period 5
10:00-10:15			Break		
BLOCK 2 10:15-11:15	Period 2	Period 6	Optional Check-in Pd 1: 10:05 - 10:25 Pd 2: 10:30 - 10:50 Pd 3: 10:55 - 11:15	Period 2	Period 6
11:15-12:30	Lunch and Wellness Break				
BLOCK 3 12:30-1:30	Period 3	Period 7	Optional Check-In Pd 4: 12:30 - 12:50 Pd 5: 12:55 - 1:15 Pd 6: 1:20 - 1:40 Pd 7: 1:45 - 2:05	Period 3	Period 7
1:30-1:40	BREAK			BREAK	
BLOCK 4 1:40 - 2:40	Period 4	Homeroom/ Advisory		Period 4	Homeroom Advisory
2:40 - 2:45	Break				
2:45 - 3:15	Targeted Student Intervention	Homework time	Homework time	Targeted Student Intervention	Homework time
3:15-3:30	Student Closure (Organize assignments and plan for self-paced work)				

GMS Models

- GMS will use the MCPS defined **“Support to Virtual”** model the **majority** of the time.
- There may be some options for **“Direct in person instruction”** during the 8:00-9:00 time frame and lunch time.



Support to Virtual Model

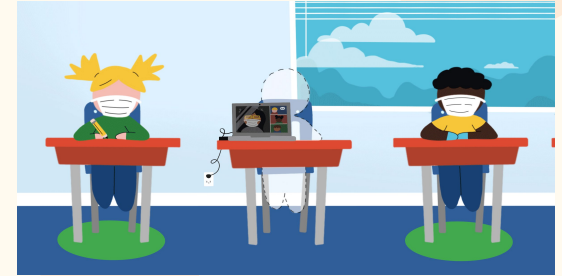
Student Schedule

- Staff with ADA accommodations stay home and teach virtually.
- Staff and students come to school Monday, Tuesday, Thursday and Friday.
- Students will follow their current schedule and move to the different classes.
- If a staff member is teaching virtually and a student has that teacher on their schedule the student will move to a designated area to take the class virtually (support model)



Sample In Person Student Schedule

- 8:00-Students enter school and go to homeroom
- 8:15-9:00-Breakfast in homeroom then choice activities
- Period 1-Cho (in person in the classroom)
- Period 2-Edwards (virtual-go to cafeteria to be supervised)
- 11:15-11:50-Eat lunch in homeroom classroom
- 11:50-12:30-Choice activities (Math or English help, Outside time, choice activities)
- Period 3-Rooths (in person in the classroom)
- Period 4-Taffo (virtual-go to the cafeteria to be supervised)
- 2:40-3:00 Homeroom (Receive supper, dismissal-walkers 2:45, car pickup-2:50, bus-3:00)



MCPS Calendar Adjustments:

March 8–10

Monday, Tuesday, Wednesday

All Schools

- **March 8** No School for Students/Professional Day (*unused make-up day; no need to extend year*)
- **March 9–10** Asynchronous instruction for students



Safety

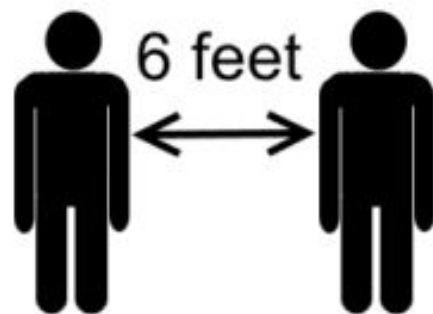
Wash Up Mask Up Back Up

FIGHT THE VIRUS



WASH UP!

MASK UP!



BACK UP!

Montgomery County Public Schools • Department of Systemwide Safety and Emergency Management



Overall Health and Safety Guidelines

1

Resources for Sharing with Your Students:

- Videos

- 5 Pillars of Public Health for staff for our community sake.
- Required Health and Safety Practices for Reopening (face coverings, handwashing and distancing)
- School Building Preparations
- Physical Distancing and Safety During Sports
- Learn more about Face Coverings
- Learn more about Hand Hygiene
- Learn more about Physical Distancing

2

3

4



Mask Wearing

- Masks/face coverings **will be required** for all students while in MCPS facilities. Masks will be provided to students who need them.
- Cloth masks/face coverings will be required for all students at MCPS schools/facilities and on the bus.
- MCPS will provide free cloth face coverings to students who need them.
- Students may bring their own cloth face coverings if they meet MCPS standards.

Face coverings are required, except when:

- Actively eating or drinking.
- Unable to wear a face covering due to a medical condition or disability or is physically unable to remove a mask.



Mask Wearing

Cloth masks/face coverings will be required for all students at MCPS schools/facilities and on the bus.

MCPS will provide free cloth face coverings to students who need them.

Students may bring their own cloth face coverings if they meet MCPS standards.

All cloth face coverings must:

- fit the face snugly and permit easy breathing;
- Securely cover the nose and mouth (from bridge of the nose to under the chin)
- Be free of dangling ties, straps, or material that can snag or catch on playground equipment, fences, doors, etc.;
- Be kept clean and free of damage, such as holes or tears



Mask Wearing

What will be done for students who forget their mask or whose mask becomes soiled or damaged during the day?

- A replacement face covering will be provided. All schools/facilities and buses will stock disposable surgical-style masks and/or replacement cloth face coverings
- Repeated failure to bring/wear a face covering will be addressed through education and discipline, as needed.



Routine Cleaning

- There will continue to be routine building cleaning and disinfection, including frequent cleaning of all MCPS schools/facilities and buses.
- There will be increased frequency of touchpoint cleaning/disinfection (handrails, door handles, sinks, toilets/urinals, water coolers, etc.) and dispenser checks/refills (paper towel, soap, hand sanitizer).
- Teachers and students will also need to contribute to caring for their areas and cleaning of their supplies and spaces throughout the day.
- Cleaning solution and paper towels will be available in each room for staff and students.
- A small hand sanitizer will be in each classroom.



Busses & Arrival Procedures

- Masks must be worn when riding the bus.
- Students must follow the expectations of the bus driver.
- All students will wait outside school until 8:00 AM. Student must maintain social distancing outside.
- Students will enter the building at 8:00 AM by designated entrances.



Arrival Procedures

- Cafeteria staff will monitor entrances to ensure mask wearing, hand sanitizing, give free breakfast bag
- Masks will be provided to students if needed
- Entrance Doors: 6th-Main, 7th-Gym, 8th-Cafeteria
- Entrance Number 18 (near Room 111)-Bridge/ARS

1

2

3

4



Late Arrival Procedures

- If a student arrives to school after 8:15 AM they will enter the building through the main entrance/welcome center.
- Students will sign in with Ms. Banegas and go to their class.

1

2

3

4



Movement in the Halls

- As students and staff move through hallways there are visual markers/signs to help maintain 6ft distances.
- Students should stay to the right in stairwells and hallways.
- Masks are expected to be worn when travelling through the hallways.
- There are large hand sanitizing stations throughout the building. Students may use these during transition.



Bathrooms

Students will be limited to **two students at a time for restrooms.**

- Students will complete a google form before going to the bathroom.
- Building service staff will monitor the first floor bathroom near cafeteria and the second floor bathroom.
- Monitor duration of restroom use to prevent the possibility of prolonged close contact.
- Bathrooms will be cleaned thoroughly throughout the day by building services.
- Students should wash their hands.

GMS Space Configurations

Bathrooms—sinks and stalls labeled, not more than two students at a time.



No water fountains or lockers will be used.





Classrooms

- Classrooms are configured to include about **12 students**. **Some classroom can accommodate more students.**
- Extra desks may be best utilized to create physical distancing from the next desk configuration.
- Classroom seating will be located **at least 6' (72 inches) apart** in all directions.
- **Seats all face the same direction**, and teacher location(s) when seated or standing should be at least 6' from student seats.
- **Assigned seating** will be used to assist with contact tracing if a positive case is found.

GMS Space Configurations

**Classroom
12 students**



Air Purifier



**Aux Gym-larger classes of
students returning**



Cafeteria-49 student desks



Gym-78 student desks





Hallways, Stairways, Lockers

Hallways/Stairways

- Students should stay to the right in hallways and stairways

Lockers

- No lockers will be used.
- Students will carry their belongings throughout the day.



Breakfast & Lunch

- Free breakfast will be available for all students at each level returning to in-person. It will be pre-bagged and picked up upon arrival.
- Free pre-bagged lunches will be available to all students at each level. These will be distributed to homeroom classes daily.
- Students will eat lunch in their homeroom classroom.

Breakfast & Lunch & Supper

- During breakfast and lunch times students must still maintain 6 ft. physical distancing
- Students may choose to bring their own lunch.
- Students will get a supper to take home at the end of the day. Cafeteria staff will deliver the supper to each homeroom teacher by 1:00 PM.

1

2

3

4

COVID-19 Surveillance Testing

- During the Board of Education meeting, MCPS will ask for approval of a contract to purchase a COVID-19 testing system for schools. The addition of surveillance testing is aligned with [CDC best practices](#). The system being recommended to the Board would allow for weekly testing of students and staff beginning the week of March 15, 2021. The testing will be **voluntary** and is done via a self-administered nasal swab ([view the product video](#)). Parents and staff would be offered an opt-out option, though we will strongly encourage all to participate.
- The proposed testing protocol would be self-administered in classrooms weekly.
- Staff **will not** be responsible for engaging with used COVID-19 testing materials.



Positive COVID Case

If a student is suspected of developing or having COVID like symptoms, the following will occur:

- Separate any student who exhibits symptoms at school and notify the parent/guardian, and send the student home.
- Encourage the parent/guardian to have the student evaluated by a healthcare provider and remind them of requirements for returning to school.

According to MSDE:

- **POSITIVE CASE:** A student with positive test results for COVID-19 or who does not receive a laboratory test or alternative diagnosis for symptoms must stay home at least 10 days since symptoms started AND until fever-free for at least 24 hours without medication AND symptoms have resolved.
- **NEGATIVE CASE:** A student with negative COVID-19 test results or an alternative diagnosis for symptoms must stay home until symptoms have improved.



Contact Tracing

- If a student has a positive COVID test result, the school will identify close contacts.
- According to MSDE, close contacts of students with a positive diagnosis or who do not receive a laboratory test or alternative diagnosis for symptoms must be excluded for 14 days from last exposure regardless of symptoms or test results.
- Close contacts of a student with negative COVID-19 test results or with documentation of an alternative diagnosis do not need to be excluded if they do not have symptoms.



Student Expectations



Student Expectation Resources

- Videos

- Required Health and Safety Practices for Reopening (face coverings, handwashing and distancing)
- School Building Preparations
- Physical Distancing and Safety During Sports
- Rotations and Phases
- Instructional Experiences
- 5 Pillars of Public Health
- Learn more about Face Coverings
- Learn more about Hand Hygiene
- Learn more about Physical Distancing

- Full Recovery Plan: www.montgomeryschoolsmd.org/recovery

- MCPS Informational Flyers

- Instructional Experiences
- Rotations and Phases
- Sample Schedules

Weekly Health Attestation

- Students and staff will have to attest **weekly** whether or not they:
 - 1. Have symptoms of COVID-19 (including but not limited to a fever);
 - 2. Have been diagnosed with the virus; and
 - 3. Have been in close contact with anyone who has/or is believed to have COVID-19.
- When a person answers affirmatively to any of these three statements, they will not be allowed to come to school or work.
- The attestation process will happen through a Google form and **will be collected centrally every week. Automatic notifications will be sent to school teams when someone answers the question affirmatively.**
- **Students and staff should take their temperature daily and alert the school immediately if their health situation changes between attestations.** MCPS has purchased digital thermometers for all families to ensure this is not a barrier to providing a response. School health staff will also have the resources to support any student showing symptoms.



Student Technology

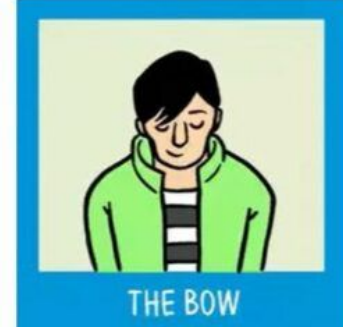
- Students are expected to bring their Chromebook and charger to and from school each day.
- There will be a limited supply of extra Chromebooks in the building if a problem occurs with a student's assigned one.
- Headphones will be provided to all students or students may bring their own.
- A Chromebook case will be provided to all students to protect it. Students will keep their device with them all day as locker use will not be permitted.

Classroom Technology

- MCPS will provide all classrooms with a microphone for students to hear.
- MCPS will provide power strips and Chromebook chargers for classrooms.
- If a student forgets their chromebook, GMS will have a process to check out a chromebook for the day.

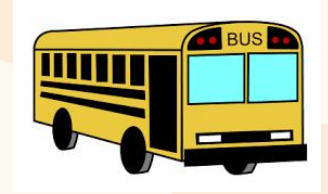


Handshake Alternatives



Created & Adapted by Ms. Megan Miller (Wootton HS SCB)

Buses



Timing:

- Buses will run at the regular times prior to virtual learning.

Protective Equipment:

- Everyone on the bus must wear a mask.
- Extra masks and hand sanitizer will be available for both students and staff
- Buses will be operated with at least two front and two rear windows partially open to promote fresh air circulation.

Seating:

- Students will sit one person in every seat.
- Students who reside in the same household may sit together in a seat to increase bus capacity.
- The seat behind the driver will remain empty.

Cleaning:

- Regular cleaning protocols continue as well as additional cleaning due to COVID:
 - Bus staff will wipe frequently touched surfaces with disinfectant between each load of students.
 - Each evening, all school buses used that day will be sprayed with disinfectant using a high-power sprayer so disinfectant reaches all interior surfaces of the bus.

Bus Staff:

- Each school bus operator has been trained on the latest information about COVID-19 and how to best prevent its spread.
- Employees will conduct a health self-assessment before reporting to work each day.

Student Communication

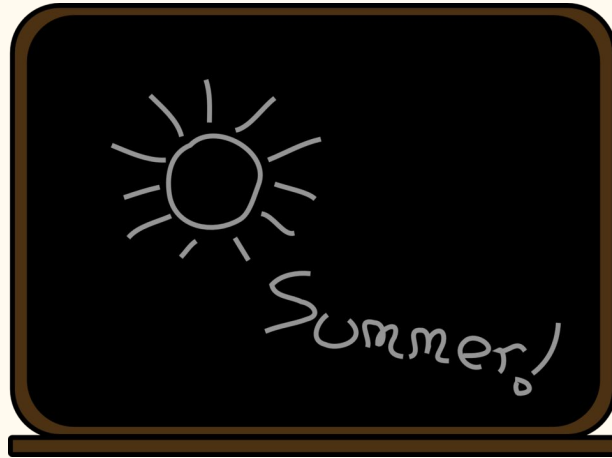
- During homeroom on 3/5/21 students will hear about expectations for returning to the building.
- A GMS orientation video will be shared on the GMS webpage and emailed to students.
- Expectations will be reviewed again when students return in person.

Changes to student status—Virtual or In Person

- The GMS counselors **can make changes to your child's status or remind you of your selection. Please contact them by February 26, 2021.**
 - 6th grade-Last Name A-S- Fara Moskowitz
Fara_Moskowitz@mcpsmd.org Ms. Moskowitz-202-643-2476
 - 7th grade-Last Name A-S Allyson_P_Swailes@mcpsmd.org
Ms. Swailes- 240-780-2486
 - 8th grade- Last Name A-S Susie_I_Ikpemgbe@mcpsmd.org
Ms. Ikpemgbe-240-668-4682
 - 6/7/8 grades-Last Names T-Z Erica_A_MerrillOben@mcpsmd.org
Ms. Merrill Oben-240-801-6281

MCPS Summer School

- MCPS will provide summer school classes free of charge.
- MCPS is working on a plan for this.



Questions

