



MADISON SIMIS 8.18.23

Dear Simis Families,

What a wonderful start to the school year! I am blown away by the amazing community at Madison Simis. Our drop-off and pick-up are getting smoother each day. We have had some concerns from neighbors about speeding and blocking intersections. Please make sure we are safe and respectful as we move through our neighborhood.

As a reminder, school starts promptly at 7:45am. Staff leave the parking lot and start their daily responsibilities with students at the 7:45am bell.

Ms. Bohlman and I are loving visiting each class and seeing the community building activities in full swing. Our classrooms are already bustling with learning! This week, our staff and students participated in a passport tour to review our school expectations of being respectful, responsible, and safe in different school environments. Our [school expectation matrix](#) is linked if you would like to see what our students learned.

Students are starting to use SeeSaw to share their learning experiences from class. Please make sure you have registered for the parent account on the app--directions were sent home with Curriculum Night information.

We hope parents enjoyed Curriculum Night. Our teachers told me it was wonderful to meet each of you this week and share some of the exciting things happening on our campus. We are looking forward to a year filled with inquiry, research, action, and critical thinking.

With Gratitude,
Lindsay Murray, Principal



UPCOMING EVENTS



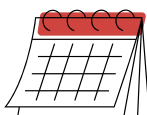
TCT 1 PM DISMISSAL
AUGUST 23 & 30



PATS DINE OUT
AUGUST 22
4:00PM PETER PIPER PIZZA



PATS GENERAL MEETING
5:30PM AUGUST 31
SKY ZONE



LABOR DAY
NO SCHOOL
SEPTEMBER 4TH



Did you know?

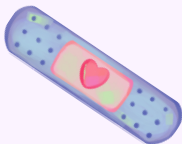
Families can browse through all the selections in the electronic library by browsing in the [Destiny Discover](#) website.

Information from Nurse Megan

The Health Office is running low on girls shorts size 6-8 and boys underwear size medium. If you have donations you would be willing to share with us, we would greatly appreciate it! Shorts can be used, underwear must be new.

If you have specific questions/concerns regarding your student and their health plans, please call or email me to set up an appointment to discuss further.

Thank you for your patience and cooperation as we begin the school year!



Megan Befort RN, MSN
Madison Simis School Nurse
602-664-7322
mbefort@madisoned.org



HEAT ADVISORY

The heat index is checked each morning before school and students move from outdoor to indoor recess when the heat index reaches the "danger zone" according to the National Weather Service.

ATTENDANCE MATTERS

Missing a day of school here and there may not seem like much, but absences add up!

When a student misses 2 days a month...

They will miss **20 DAYS** a year.

They will miss **30 HOURS** of math over the school year.

They will miss **60 HOURS** of reading & writing over the school year.

They will miss over **1 YEAR** of school by graduation.

When a student misses 4 days a month...

They will miss **40 DAYS** a year.

They will miss **60 HOURS** of math over the school year.

They will miss **120 HOURS** of reading & writing over the school year.

They will miss over **2 YEARS** of school by graduation.

Did you know, students who are absent 18 days are considered chronically absent by the state of Arizona? Page 5-6 of our student handbook explains more.

Update: Site Based Council

Site Based Agenda and Minutes

We are looking for representatives to join the Simis Site Based Council (specifically for Kinder and 1st grade). Complete this form by 9/10 to submit your interest. The Current committee with review interest, elect new representatives from the interest form, and notify new participants following our meeting on 9/11/23.

MADISON SIMIS ELEMENTARY 2023-2024 SCHOOL SOCIAL WORKER SERVICES



K-2 Social Worker
Kalah Masterson, LMSW
KMasterson@madisoned.org
602-664-7327

3-4 Social Worker
Roxanne Little, MSW
RLittle@madisoned.org
602-664-7348

MORE ABOUT SCHOOL SOCIAL WORKERS

SCHOOL SOCIAL WORKERS HELP STUDENTS WITH...



Feelings



Social Skills



School Success



Attendance



Community Resources

SCHOOL SOCIAL WORKERS DO THIS BY...



Teaching social emotional lessons to classes, small groups, or one on one



Working with all students especially with those who are having social, emotional, and/or behavior challenges in small groups or one on one



Collaborating with teachers, support staff, admin, parents/guardians, and other community members to support social and emotional learning and well being in the academic setting



Providing education and information on students' social emotional needs through workshops and community resources

SCHOOL SOCIAL WORKERS DOES NOT...



Teach academic lessons



Fix/Cure all problems



Work only with "problem" students



Work alone or know what is best without consulting team members



Meet with students to do long term therapy or counseling



Handle discipline or assign consequences

Like all school employees, a School Social Worker is a mandated reporter and is required to report suspected abuse or neglect under A.R.S. 15-3620. However, School Social Workers do NOT directly work for DCS. They bridge the gap between home, school, and the community to promote success at school.

If you feel your child may benefit from social work support please fill out this referral form as the first step in the process

**CLICK
HERE**

**Learn about the new
Simis Administration
Team**



Assistant Principal



Principal



Dean of Students

IB NEWS from Mrs. Powers



Welcome to the 2023-2024 school year! As we continue our IB journey here at Madison Simis, some common questions arise. Here are some answers to your few IB-PYP questions.

1. What is the Primary Years Programme?

The Primary Years Programme (PYP) is a curriculum framework for young learners ages 3-12 designed by the International Baccalaureate (IB). Founded on the philosophy that recognizes a child's natural curiosity, creativity and ability to reflect, the PYP generates a stimulating, challenging learning environment to nurture those assets and foster a lifelong love of learning in every child. The PYP, like all IB programmes, is transdisciplinary, meaning students learn across subject areas while investigating big ideas.

2. Are there a specific set of standards?

In the PYP, students learn about significant concepts through units of inquiry. Six transdisciplinary themes guide the units of inquiry:

- *Who we are*
- *Where we are in place and time*
- *How we express ourselves*
- *How the world works*
- *How we organize ourselves*
- *Sharing the planet*



3. What about state standards?

We are committed to making sure that students meet and exceed the standards. With the implementation of our IB programme, we were required to examine our curriculum carefully to ensure alignment with the state standards.

4. What are the advantages of an IB education?

- IB World Schools are subject to a strict accreditation process monitored by the IB, ensuring that schools provide a high-quality education.
- IB teaching methods and curriculums are research-based and draw from the best educational practices from systems worldwide.
- IB teachers must participate in many professional development opportunities to continually promote their awareness of current educational practices and new thinking.
- IB students develop a sense of the world around them and their responsibility to it.
- IB programmes are recognized internationally and ease the educational transitions of mobile students so that their education is not adversely affected if their families relocate.

5. How can I learn more about the IB and PYP?

- Visit the IB website at www.ibo.org and the Simis IB webpage at <https://sites.google.com/view/ibmadisonsimis/home>
- Attend school meetings and events
- Speak with your school's PYP coordinator, Melissa Powers
- Speak with your child's PYP classroom teacher

Information from www.ibo.org



Primary Years
Programme

Having Lunch with Your Child

Lunch visitors must be on the student's approved check out list as submitted by the custodial parent or legal guardian. All visitors must sign in at the school office and get a visitor badge through the Raptor Visitor Management System before going to the cafeteria. We recommend that kindergarten families given their new students a few weeks of school experience before joining them for lunch.

The custodial parent or legal guardian must notify the school office by 9:00 AM on the day they, or any visitor on the student's check out list, is planning to attend lunch. Please use [this form to register for lunch.](#)

Lunch visits are limited to two visitors per child. No siblings are permitted during any lunch visits. The school principal or their designee, at their discretion, will have the authority to cancel lunch visits based on any issues they feel could impact their ability to provide a proper environment. School rules to guide lunch visitors will be followed. These will include designated wait areas, instructions for meeting your student, no photographs or social media postings of other children. The Principal will have the authority to suspend or revoke lunch visit privileges at their discretion.

Once successfully checked in, proceed to the seating area located in the cafeteria. Your student will meet you as their class enters the cafeteria. We ask that you sit at the designated tables marked "visitor seating" with your student.

After lunch, please come directly to the office, sign-out, and return your visitor's badge.

There are a limited number of dates throughout the school year when lunch visitors are not allowed. Please plan your lunch visits on days **other** than those listed below:

First Week of School

Early Release Days (such as TCT Wednesdays)

Half Days

October 25 - 27 (Parent Conference Days)

January 31-February 2 (Parent Conference Days)

April 3 - 21: State Testing

May 12: Last day for lunch visitors



MADISON SIMIS VOLUNTEER INFORMATION

2023-2024

VOLUNTEERS DEFINED

- School Site Volunteer- Parents and legal guardians of an enrolled student helping out at a school function or in the classroom
- Chaperones- any individual attending a field trip or overnight trip
- Community Volunteers- Coaches, family members, members of the community that wish to support our school
- Employee Volunteer- individuals working for the District and serving in a different capacity



REQUIREMENTS

Prior to Volunteering:

All volunteers must complete [Chaperone/Volunteer Online Application](#). Volunteers that are NOT parents or guardians must obtain fingerprint and background clearance. Contact Cotton Fabiano at 602-664-7921 for an appointment. Cost will be covered. All volunteers must bring photo ID when volunteering and sign into the Raptor system when entering campus. Volunteers that submitted applications last year are still active! No action is necessary.

VOLUNTEER EXPECTATIONS

- Keep all matters pertaining to students confidential
- Wear volunteer sticker each time you are on campus
- Sign in and out on the Raptor system in the front office
- Refrain from photographing or recording students other than your own
- Please do not bring siblings or other children with you when volunteering



THANK YOU!

Thank you so much for volunteering at our school! Your willingness to give your time and service is greatly appreciated. Your support allows us to continue to fulfill our mission and serve our students.

VISIT THE [VOLUNTEER HANDBOOK](#) FOR MORE INFORMATION

QUESTIONS: CONTACT THE COMMUNITY EDUCATION DEPARTMENT @ 602-664-7956

MAC is currently full and has a wait list for Simis. The district is trying to hire more club leaders. If you know of someone interested, please see below:

WE ARE HIRING!

Community Education Madison Adventure Club



POSITION:

MAC CLUB LEADER

\$15.88 HOURLY WAGE

20-25 HOURS WEEKLY

(FLEX SCHEDULE AVAILABLE)

INCENTIVES:

- \$500 sign on stipend for new employees
- \$250 referral bonus for current employees that refer a new hire
- \$50 account credit for current CE families that refer a new hire
- Child off waitlist once employee starts for CE families

HOURS:

Elementary School Site (K-4th):

Monday, Tuesday Thursday, Friday:

2:00pm-6:00pm

TCT Wednesdays:

12:30pm-6:00pm

Middle School Site (5th-8th):

Monday, Tuesday Thursday, Friday:

3:10pm-6:15pm

TCT Wednesdays:

1:40pm-6:15pm

Madison Traditional Academy (K-8th):

Monday, Tuesday Thursday, Friday:

2:30pm-6:15pm

TCT Wednesdays:

1:00pm-6:15pm

www.madisonaz.org

602-664-7956



THRIVE: Parent Series

Madison School District just placed 4 new modules in our THRIVE section of the Madison website. These short and informative videos with experts in the field provide families with resources to approach and support their child in ways that align with the students of the Alpha and iGeneration.

Elementary and Middle School Expectations, Routines, and Homework Engagement and Organization Skills

Pre-K and Early Elementary Expectations, Routines, and Fine and Gross Motor Skills

Overall Student Mental Health Anxiety, Depression, & Other Emerging Issues in Student Mental Health

Screen Time, Internet Safety, Digital Literacy, and Leadership for Students and Parents