



HCS_ECHS



HCS_ECHS



HCS Early College
High School
@HCSECHS

Website:

EC.HORRYCOUNTYSCHOOLS.NET

Week of October 28th - Nov. 1st

The Principal's Desk

Dear Trailblazer Family,

Please encourage your child to donate to the Salvation Army Food Drive. Last year, we dominated the county in the drive to stop hunger. We would love to be the leader once again this year to show we care about Horry County.

We have many ways for your students to get involved next week. We want our students to make good sound decisions that yield the best benefits and opportunities to reach our dreams and goals. Please encourage your child to participate in the **Red Ribbon Week Activities**.

- M (10/28): "Be on a Winning Team, Drug Free" (Athletic wear)*
- T (10/29): "Tag Team Tuesday" (twin with someone who is also drug free)*
- W (10/30): "Too Smart to Start" (dress like a Professional OR your future career)*
- On Thursday, we will "Scare Cancer Away" by wearing PINK.*

[HCS Early College Store](#) is up and running. We are so excited to offer the opportunity to purchase ECHS Wear to our ECHS Family.

If you need any additional information, please contact me at (843)349-3131 or email: kfleming@horrycountyschools.net.

Sincerely,
-Kandi Fleming, ECHS Principal

Upcoming Dates

Friday, October 25th - RED Ribbon Kick-Off Day - Wear Red

M (10/28): "Be on a Winning Team, Drug Free" (Athletic wear)

T (10/29): "Tag Team Tuesday" (twin with someone who is also drug free)

W (10/30): "Too Smart to Start" (dress like a Professional OR your future career)

On Thursday, we will "Scare Cancer Away" by wearing PINK.

Salvation Army Food Drive - ongoing



"We are Early College, being the best we can be."



Military Opt-Out Form

Military Opt-Out Form

Upon request, federal laws require public school districts to provide military recruiters the names, addresses and telephone numbers of high school juniors and seniors. If you wish for your child's information to be withheld from the list released to recruiters, please visit Horry County Schools' website and complete an online [Military Opt-Out Form](#) no later than Monday, October 28. Requests are valid for one year and must be resubmitted annually. Without a request to opt-out of releasable data, contact information will be provided to military recruiters on or about November 1. If you chose to opt-out of this release when you registered your child for school this year, you do not need to submit a new form.

If online access is unavailable, a written request may be submitted via fax at 843.488.6779 or mailed to Horry County Schools, Office of Communications, 335 Four Mile Road, Conway, SC 29526. Written submissions should be identified as a Military Opt-Out Request and must include the student's name, the high school the student attends, the student's date of birth, year of graduation, and the printed name and signature of the parent or guardian submitting the request.

- [Click here](#) for the ***Military Opt-Out Form - The Deadline to opt-out is Monday, October 28, 2019.***

**RED RIBBON WEEK- FRIDAY
OCTOBER 25**

"I'm a Jean-ius and Proud to be Drug-Free"....(Wear jeans and RED)



**RED RIBBON WEEK- MONDAY
OCTOBER 28**

*"Be on a Winning Team, Drug Free"
(Athletic wear)*



**RED RIBBON WEEK- TUESDAY
OCTOBER 29**

"Tag Team Tuesday" (twin with someone who is also drug free)



**RED RIBBON WEEK- WEDNESDAY
OCTOBER 30**

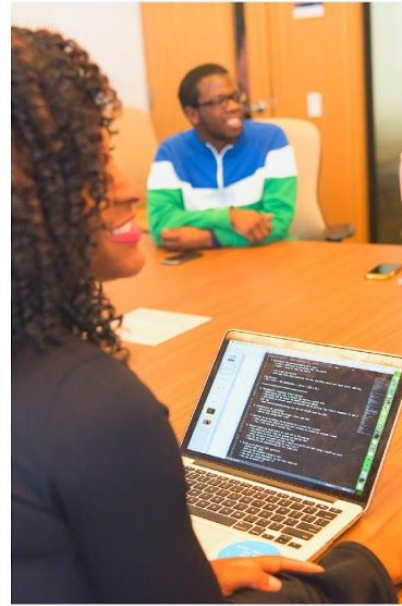
"Too Smart to Start" (dress like a Professional OR your future career)



**BREAST CANCER AWARENESS
DAY- THURSDAY OCTOBER 31**

Scare Cancer AWAY – wear PINK





**HORRY COUNTY
MEMORIAL LIBRARY
+
SC DEPARTMENT OF
COMMERCE**

SC CODES

Free computer programming courses for all South Carolinians, whether you've never touched code or you want to skill up. Start learning today at sccodes.org!

FOR MORE INFORMATION
CALL 843-915-7441

**FREE ONLINE
COURSES**

SELF-PACED

**MENTORS &
STUDY GROUPS
AVAILABLE**

**ACCESS TO JOB
POSTINGS**

Courses include:
Command Line Basics
Front-End Basics
Java
Javascript
Ruby
Ruby on Rails

"We are Early College, being the best we can be."



**Mr. Chappell - Room 221 - Social Studies
(Economics (HS & Col), American Government,
Psychology, & Sociology)
Thursdays from 2:30 p.m. until 4:00 p.m.**

**Mrs. DeCerbo - Room 210 - Social Studies - any subject
Wednesdays from 2:30 p.m. - 3:30 p.m.
AND
1st and 3rd Tuesday of each month - 2:30 p.m. - 4:00 p.m.**

**Mr. Hunt - Room 228 - Mathematics (including college)
Wednesdays - 2:45 - 4:15 - Other days by appointment.**

**Ms. Rautsaw - Room 222 - Geometry and any math
Wednesdays 2:30-4:30**

**Ms. Woodard - Room 223 - Algebra 1
Tuesday and Thursday from 2:30 p.m. – 4:30p.m.**

**Ms. Thompson - Room 209A - Alg. 2, Alg. 3 and Prob & Stats
Tuesday - 2:30 p.m. - 4:15 p.m.**

Note: Please ensure your child is picked up by 4:30 p.m.

"We are Early College, being the best we can be."

TRAILBLAZER

Pb&J uncrustable offered daily



DAILY LUNCH SPECIALS *include fruits and vegetables*



MONDAY 10/28

Mandarin Chicken

Chicken wrap

Ham and cheese sandwich



Tuesday 10/29

Beef nachos

Chicken tenders

Chef salad



Wednesday 10/30

Chicken Sandwich

Cheese burger

Chicken wings



Thursday 10/31

Baked chicken

Pulled pork BBQ

Turkey and cheese wrap



Friday 11/1

Big daddy pizza

Spicy chicken sandwich

Pb&J uncrustable

"We are Early College, being the best we can be."

Nurse's Corner



The Flu season is approaching:

The following information has been copied directly from the CDC (**Centers for Disease Control and Prevention**) website: <https://www.cdc.gov/flu/symptoms/symptoms.htm>

Flu Symptoms

Influenza (flu) can cause mild to severe illness, and at times can lead to death. Flu is different from a cold. Flu usually comes on suddenly. People who have flu often feel some or all of these symptoms:

- fever* or feeling feverish/chills
- cough
- sore throat
- runny or stuffy nose
- muscle or body aches
- headaches
- fatigue (tiredness)
- some people may have vomiting and diarrhea, though this is more common in children than adults.

*It's important to note that not everyone with flu will have a fever.

If your child is diagnosed with the Flu, kindly notify the school nurse at 843-349-3143.

Lynn Bethle, RN
School Nurse

Lbethle@horrycountyschools.net

Early College High School
Scholars Academy

IS IT A **COLD OR FLU?**

Signs and Symptoms	Cold	Flu
Symptom onset	Gradual	Abrupt
Fever	Rare	Usual
Aches	Slight	Usual
Chills	Uncommon	Fairly common
Fatigue, weakness	Sometimes	Usual
Sneezing	Common	Sometimes
Stuffy nose	Common	Sometimes
Sore throat	Common	Sometimes
Chest discomfort, cough	Mild to moderate	Common
Headache	Rare	Common

#FIGHT FLU

 CDC

Seasonal flu activity often begins as early as October and November and can continue to occur as late as May. Flu activity most commonly peaks in the United States between December and February.

The CDC recommends a yearly flu vaccine for everyone 6 months of age and older as the first and most important step in protecting against this potentially serious disease.

IMPORTANT MAKE-UP DAY INFORMATION

Please make sure you note the Make-Up Day Announcement. The days that we will be making up our missed time are:

January 17th, 2020 (now a half-day with a 2.5 hour dismissal), and February 18th, 2020.

January 16th, 2020 is now a full day.



[Guidance Google Classroom](#)



There's an APP for that - Go HCS Mobile - [Download Here](#)

"We are Early College, being the best we can be."

[ECHS Website](#)

[Google Classroom Announcement Page](#) (code - [jtiwt7](#)) ,

Follow us on [Facebook](#), [Twitter](#) and [Instagram](#).

[HCS Student Planning Calendar](#)

[HGTC Calendar](#)



[My School Bucks](#)



[POWERSCHOOL](#) - Attention Parents, Please be advised that if you need to make any changes to your student's information these corrections can be made in the Parent Portal. This would include address, phone number, parent information, and emergency contact updates. Please log in to your parent power school account and click on **year-round updates**.

"We are Early College, being the best we can be."



HCS Early College High School

2050 Hwy. 501 East Bldg. 400
P.O. Box 261966 Conway, SC 29528
Phone: (843) 349-3131 Fax: (843) 347-2498



ATTENDANCE POLICY

Attendance – General Statement on Horry County Schools Policy

The South Carolina Attendance laws and policies are in the *Horry County Schools Parent Student Handbook*. ECHS will use the following procedures and policies to process student attendance. SC Truancy Law is defined in the handbook, as well.

High School Class Absences - Students will be allowed five (5) unexcused absences in a semester class, which meets every day to receive credit for the course. The Truancy Law states: A child who has accumulated three (3) consecutive unlawful absences or a total of five (5) unlawful absences in a school year is considered Truant.

Lawful absence - Lawful absences do not count against the student's total number of allowed absences and they include:

- a) Illness or medical appointment; documentation must be provided upon return
- b) Late bus
- c) Administrative or guidance reasons
- d) School sponsored trips or activities
- e) Extenuating circumstances approved by the principal
- f) District Approved Religious holiday

*On the morning of the student's return to school following an absence (excused or unexcused), a written excuse must be turned into the school secretary, in the main office. Students are cautioned that notes and excuses will be verified by the office, and forgeries will be dealt with as an administrative disciplinary matter.

Exceeding 5 absences - You WILL have to repeat the course, attend afterschool make-up or attend Summer School. SC attendance policy state, "Students who have absences in excess of those allowed by law and policy will be denied credit regardless of their grade."

ECHS tardy policy - Students who are tardy to school should report to the main office.

- 1st Tardy – Warning;
- 2nd Tardy - Students will be required to take the tardy policy home and have it signed by a parent/guardian
- 3rd Tardy – 2nd Warning
- 4th Tardy – Letter to parent
- 5th Tardy – Administrative Detention – 30 minutes
- 6th Tardy – Administrative Detention – 1 hour
- 7th Tardy – Administrative Detention – 2 hours

Sign out early - Prior to the start of the school day, a note signed by a parent/guardian that includes the following information should be submitted to the school secretary: student's name, date/time, phone number where parent can be reached to verify request, reason for early dismissal, and parent/guardian signature. If a student wishes to leave early without a note or without a parent/guardian physically present, permission must be verified by the school secretary before the student can leave. Arrangements will be made to dismiss the student at the appropriate time. If parents come to sign students out, we request that they do so during the change of classes so as not to interrupt instruction. The early dismissal does count as an absence unless it is for an excused reason as listed above. If a student misses a college class, the professor will count it as an absence regardless of the cause.

School Tardy due to Late Bus - All students who arrive on a school bus after the 7:55 class start time will be issued a late bus pass from the main office. It is the student's responsibility to obtain this pass and present it to the classroom teacher. **The only excused tardy is for bus riders on a late bus or students with a medical or legal note.**

Excused pass - Students that arrive to school with a medical or legal note should report to the office upon arrival for an excused tardy pass.

Do traffic and/or car problems count as an excused tardy? No, traffic and mechanical issues are not excused reasons for tardiness. Be aware that some college courses will count excessive tardies as a full absence regardless of reason. Check your syllabus and plan accordingly.

"We are Early College, being the best we can be."

"We are Early College, being the best we can be."



HCS Early College High School

2050 Hwy. 501 East Bldg. 400

P.o. Box 261966 Conway, SC 29528

Phone: (843) 349-3131 Fax: (843) 347-2498



DRESS CODE

Our dress code has been developed to help students prepare for the world of work/college. The dress code has been developed with modesty and appropriateness in mind. According to the Horry County School District Policy, student dress must conform to the following regulations:

1. Attire must comply with requirements for health and safety. (This prohibits the wearing of chains and studded clothing or accessories.)
2. Hats/Headwear, sunglasses, headphones/earplugs, sweatbands, combs/picks, hoodies, headscarves, bandanas, headgear, head coverings, and sunglasses are prohibited inside school buildings.
3. **The possession of all bandanas is prohibited at ECHS.**
4. Shoes must be worn at all times. No bedroom shoes/slippers are allowed at any time.
5. **Pants & shirt must overlap at all times.** Clothing should be worn so that undergarments are not visible.
6. Attire must not display any sexual behavior, sexual innuendos, or ethnic derogatories.
7. Items such as spiked jewelry (including body piercings), padlocks, chains, and metal heel plates are not allowed.
8. No vulgar, obscene or otherwise inappropriate symbols, language, pictures, or wording will be permitted on clothing or accessories. Clothing or accessories (ex. Bookbags, jewelry, hats, etc) that display weapons, alcohol, tobacco, or other drug symbols are not permitted. Clothing must not display any information about, representations of, or advertisements for alcoholic beverage(s), tobacco, controlled drugs, illegal drugs, or paraphernalia associated with the foregoing. Clothing which is controversial or disruptive is not allowed.
9. Attire must not be immodest, obscene, profane, lewd, vulgar, indecent, or offensive.
 - a. Shorts, skirts, and dresses, even with leggings, jeggings, etc. must be longer than the student's fingertips when in a relaxed standing position. Slits/holes in clothing must also be no shorter than the student's fingertips when extended in the relaxed position.
 - b. See-through clothing, bare midriff tops, backless blouses, shirts/tops with low necklines, halter-tops, spaghetti-strap tops, muscle shirts, and tank tops are prohibited. All shirts must cover the undergarments. It is never appropriate to show undergarments.
 - c. Gym shorts, cutoffs, bathing suits and short shorts are not appropriate at school.
 - d. Appropriate undergarments should be worn and should be covered by outer clothing.
 - e. No pajamas or pajama bottoms/pants are allowed.

** The ECH community asks that students follow the spirit of the policy and not just the letter of the restrictions. Questionable clothing will be handled on a case-by-case basis at the discretion of the administration and teachers.*

Consequences of breaking the dress code:

1st Offense: Student will be asked to come to the office and requested to change the inappropriate clothing, reverse the offending garment, or call parents. The student will not be allowed to return to class until the situation is corrected.

2nd Offense: Student will have to correct the dress code violation, parents will be notified, and the student will be assigned to afterschool administration detention. Additional discipline action will include, but not be limited to OSS and parent conference.

You must follow the instructions of the teacher or administrator regarding your dress. If you fail to do so, you will be written up for insubordination, which makes the issue worse. If you feel that your dress was unfairly criticized you may appeal to the principal.

"We are Early College, being the best we can be."

"We are Early College, being the best we can be."



HCS Early College High School

2050 Hwy. 501 East Bldg. 400
P.O. Box 261966 Conway, SC 29528
Phone: (843) 349-3131 Fax: (843) 347-2498



ELECTRONIC DEVICES – CELL PHONES*

Cell phone use at school - Students may use cell phones and other electronic devices before 7:55, after 2:25, and during the student's lunch period. Cell phones and other electronic devices are to be turned off and put away before entering the classroom.

Headphones and ear buds are not to be worn on the head, neck, or be visible during the times of 7:55 a.m. until 2:25 p.m.

The following consequences are in place for a violation:

1st offense: The phone will be confiscated, discipline infraction entered into PowerSchool, and a letter mailed to the parent.

2nd offense: The phone will be confiscated, discipline infraction entered into PowerSchool. The student's parent or guardian must come to the school to retrieve the device.

3rd offense: The phone will be confiscated, discipline infraction entered into PowerSchool. The student's parent or guardian must come to the school to retrieve the device and the student loses cell phone privileges at any time while on school grounds. ECH is not responsible for the loss, damage, or theft of any personal technology devices students choose to bring to school.

ECH students who violate this policy while in a college classroom will be dealt with at the discretion of the college instructor and HGTC policy.

- *The unauthorized use of cell phones and other electronic devices to communicate or access information during classes or testing is prohibited.*
- *The use of cell phones and other electronic devices in locker rooms or restrooms is prohibited.*
- *The use of audio or video recording capacity of any cell phone and other electronic devices is prohibited in locker rooms, restrooms, or during regular school hours without prior permission from the building administration.*

Note: Refusal to obey any staff member who asks for a cell phone/ electronic device will result in an additional disciplinary infraction including an assignment of another day of OSS.

ELECTRONIC DEVICES - MUSIC

When can I listen to my Electronic device? These devices may be used before school, during lunch, and after school. Students may not use them in the hallways between classes.

This includes any type of ear buds or headphones.

* ECHS administration recommends that no items of value be brought to school. If any items are lost or stolen, the school will not be responsible for them.

"We are Early College, being the best we can be."

"We are Early College, being the best we can be."




HCS Early College
High School
**Managing
School
Payments
Just Got Easier!**

**Registration is FREE and
EASY!**

GO TO:
MYPAYMENTSPLUS.COM

- PAY FOR STUDENT FEES
- VIEW ACCOUNT BALANCES 24/7
- ENROLL IN SCHOOL ACTIVITIES
- TRANSFER STUDENT BALANCES

To register, simply have your Student's ID #, Select your School District, and follow the on-screen instructions. 



www.MyPaymentsPlus.com

"We are Early College, being the best we can be."



P.O. Box 157
Suwanee, GA 30024-0157

Dear Parents/Students:

Envision Payment Solutions™ is pleased to have been selected by Horry County Schools as its check service provider.

Please be aware that if your check is returned, it may be re-presented electronically. Also, in presenting a check for payment, you authorize service charges and processing fees to be debited from the same account should the check be dishonored. These fees, as permitted by state law, may be debited as a paper draft or an electronic funds transfer, at our option. Each dishonored item is subject to the applicable state returned check fees.

Specifically, per *South Carolina Code Annotated § 34-11-70*, the service fee for returned checks is \$30. (Note that the fee structure will change according to any amendments made to SC law during a school year.)

If you wish to inquire about a returned check written to Horry County Schools, please contact Envision Payment Solutions™ directly at the information listed below.

Thank you. We wish you and your children all the best for this year and beyond.

Sincerely,

Envision Payment Solutions™



Customers (check writers) with returned check inquiries should contact:

Envision Payment Solutions™

Tel 877.290.5460, or 770.709.3100

Fax 770.709.3007

P.O. Box 157

Suwanee, GA 30024-0157

customerservice@envisionpayments.com

www.envisionpayments.com

"We are Early College, being the best we can be."