



# School Closure & Dismissal: Support & Care for Students & Families

NMSUD is dedicated to the health, safety and well-being of all students. The following resources are available to families during the time of school closure and dismissal.

**If you are experiencing an emergency or a life threatening situation, please call 911 or go to your nearest hospital.**

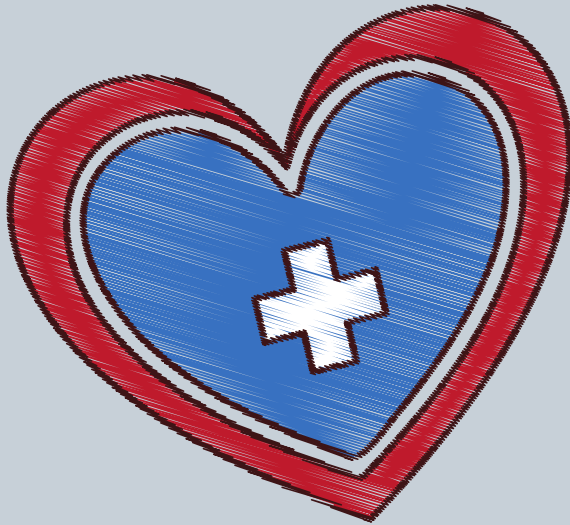
## Local Resources

### Mental Health

Hoag Center for Family Living | 949-764-6542  
Psychotherapy services on a low sliding scale to those who are uninsured or underinsured.

### Housing/Food

Serving People in Need (SPIN)  
Phone: (714) 751-1101  
Fax: (714) 751-3332  
Email: [info@spinoc.org](mailto:info@spinoc.org)



**Newport Mesa Family Resource Center**  
949-764-8100

## Substance Abuse and Mental Health Services Administration Disaster Distress Helpline

- Toll-Free: 1-800-985-5990 (English and español)
- SMS: Text TalkWithUs to 66746
- SMS (español): "Hablanos" al 66746
- TTY: 1-800-846-8517
- Website in English: <https://www.disasterdistress.samhsa.gov>
- Website in Spanish: <https://www.samhsa.gov/find-help/disaster-distress-helpline/espanol>

## National Suicide Prevention Lifeline

- Toll-Free: 1-800-273-TALK (1-800-273-8255)
- Toll-Free (español): 1-888-628-9454
- TTY: 1-800-799-4TTY (1-800-799-4889)
- Website in English: <https://www.suicidepreventionlifeline.org>
- Website in Spanish: <https://suicidepreventionlifeline.org/help-yourself/en-espanol>

**NMUSD Support and Care Line: 714-424-7538**

Call for additional community referrals and leave a message.  
We anticipate responding to voicemails within 24 hours.