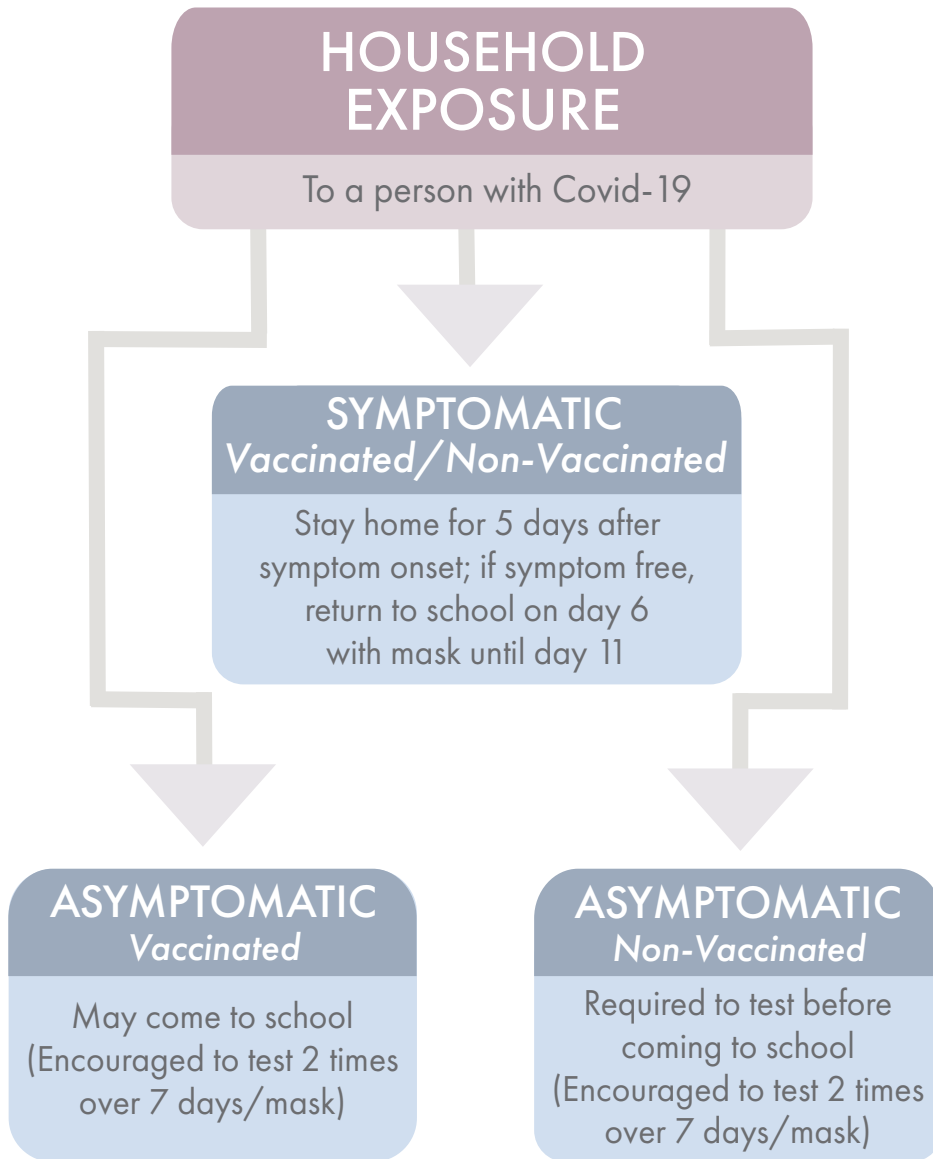




POSITIVE CASE IN HOUSEHOLD



What tests will work?

- Any test conducted at school (parent permission)
 - If Antigen test used, a 2ND test is required between 24-48 hrs of the 1ST test administered
- Any test administered by a health care professional

**Students with a documented positive case of COVID-19 in the past 90 days do not need to test and can return to school when symptom free for 24 hours or stay in school with mild symptoms.*