

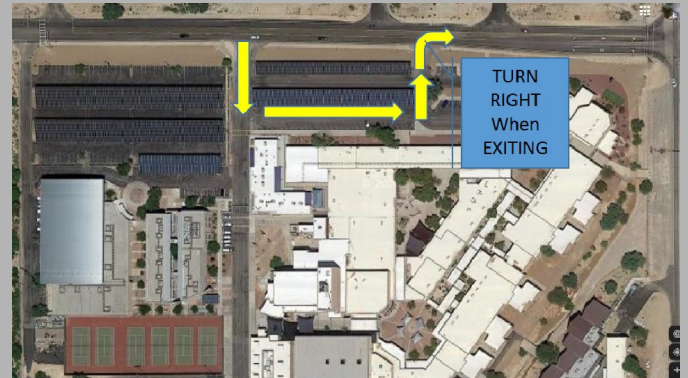
Mountain View Parking & Drop-off/Pick-up

We ask that all students and parents follow these instructions for drop-off, pick-up, and parking on campus. Due to Covid-19 we are expecting more traffic to our school.



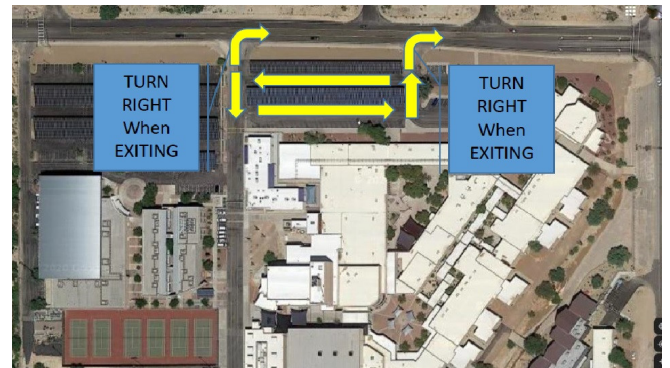
STUDENT DROP-OFF

- 1st Hour begins at 8:20 - students can arrive as early as 7:50 (0 hour students are an exception)
- Exit by turning **RIGHT** onto Linda Vista



STUDENT PICK-UP

- School is dismissed at 1:55
- Students will not be released for early rides
- Exit by turning right onto Linda Vista



STUDENT PARKING AND DISMISSAL

- Student parking is available at Arthur Pack AND in the parking lot north of the J/K Building.
- All vehicles will need a parking permit--you will have 2 weeks to secure a permit.
- When exiting, students **MUST** exit by turning right onto Linda Vista



We are Safe, We are Respectful, We are Responsible, and Always Kind.