

The Knight Line

Normandale Hills Elementary

May 4th, 2022

Ph: 952-806-7000

Fx: 952-806-7001

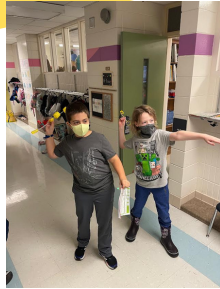
Nurse: 952-806-7008

Attendance: 952-806-7002

nhattendance@isd271.org



Normandale Hills is committed to maximizing individual excellence by developing capable, ethical children with a passion for learning using innovative, quality programs and fostering a sense of community.



Upcoming Dates

- MAY 3-5** MAP Testing (Reading)
- MAY 6** End Of Year Celebration - Picnic
- MAY 10-12** MAP Testing (Math)
BOGO Bookfair
- MAY 20** Coffee With The Principal
Festival Of Learning Virtual Roll-Out
- JUN 3** Field Day
- JUN 9** Last Day Of School!

From the Principal

Dear NH families,

Greetings from Normandale Hills! Spring is here and as such a majority of my time is now dedicated to planning for the 22-23 academic year. With that being said, a couple of items for your attention and consideration. First, one of the last items we complete is to create tentative class lists. As has been our practice, we will again take family's input into consideration as part of this process. If you would like to provide feedback please complete the Special Consideration Form that is also linked in this edition of the Knight Line.

Spring also brings staffing changes and we have several significant departures I would like to call to your attention. First of all, Connie Oldfather, Kindergarten Teacher, and Deb Wagner, Student Support Paraprofessional, will be retiring at the end of the year. In addition, Lori Kosey, 1st grade teacher, will be departing and moving to Michigan to be closer to family. Combined these fine educators have provided over 70 years of service to the Normandale Hills' community and it goes without saying will be missed by all! Please help me in congratulating them and also wishing them the best with future endeavors.

Finally, a reminder about our PTA sponsored end of the year picnic which will take place this Friday evening from 6:00-8:00pm. In addition to food and opportunities for fellowship, there will also be several Silent Auction items that you can bid on with the money raised going to support PTA programming.

Thank you for your continued support of Normandale Hills Elementary!

Sincerely,
Dr. Vollmuth

Special Consideration Placement

One of the most important things a school does each year is to place students in classrooms where they will receive the majority of their formal education. This process is completed by the Principal and teachers. Please complete this [form](#) no later than May 20th, 2022. You'll receive teacher and classroom information in the fall.

School Tool Box

We are happy to announce that we will be selling prepackaged school supplies for next school year, again, through School Tool Box. School supplies will be delivered directly to your home. The school supply lists are created by our classroom teachers.

Order online at: schooltoolbox.com or call 1-800-952-1119.

order online today!

Dear Parents,
We are happy to announce that we have chosen to sell prepackaged school supplies for the next school year through School Tool Box. School supplies delivered directly to your home address - **it doesn't get any easier!**

- Easy Online Ordering
- Customize Your Order
- Avoid Back-to-School Crowds
- Trusted Brand Name Supplies
- Teacher Approved List
- Backpacks and Lunch Boxes

schooltoolbox.com
800-952-1119

Your order supports **One Box, One Meal, Two Kids!**

School Names
Normandale Hills Elementary
Bloomington, MN

Ordering Available:
Beginning April 6th

Allow 10 days for processing.

Kindergarten - \$63.54
1st Grade - \$61.54
2nd Grade - \$55.25
3rd Grade - \$57.87
4th Grade - \$58.89
5th Grade - \$55.29
AMIGO - \$59.96

Visit schooltoolbox.com to place your order!

SCHOOL TOOL BOX

All icons below are links

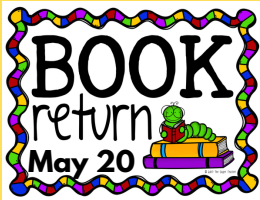


End Of Year Book Return

Please return all library books to school by May 20th.

We encourage you to also look for any overdue books at this time.

Thanks!



Preschool Enrollment

Bloomington Public Schools preschool enrollment for the 2022-23 school year is now open.

[Register Here!](#)

For more information contact Early Learning Services at 952-681-6200

Summer SAFARI Programs

[Sign Up Today!](#)

Registrations are accepted on a first-come, first-served basis with a maximum of 75 children per site.

No refunds will be given for Super SAFARI cancellations by parents.

Fall Kids' SAFARI Registration

Kids' SAFARI fall registration for incoming Kindergarten through Fifth grade students open Monday, April 11 at 8:00 a.m. This is an earlier registration date than past years.

Kids' SAFARI offers care before school from 6:30-8:50 a.m. and after school from 3:20-6:00 p.m.

[Register Here!](#)

PTA®

everychild. one voice.®

Normandale Hills PTA Website

Sign Up For The NH PTA News!



Spring Picnic

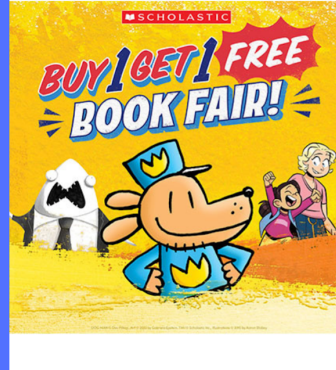
Date: May 6th **Location:** Back of School
Time: 6-8pm

Join in the Fun

- Pizza
- Snacks
- Games
- Music
- Silent Auction
- and more!

[Volunteer Sign Up Here!](#)

MAY 10-12



Help Raise Funds for Normandale Hills Festival of Learning

**Friday, May 20, 2022
11:00am - 8:00pm**

At this Leeann Chin® location:

Bloomington
9727 Lyndale Avenue South
Bloomington, MN 55420

Leeann Chin Restaurants® will donate 20% of sales to support

Normandale Hills Festival of Learning

Fundraiser will only be at the location listed on this flyer.
Dine In and Carry Out Only
Please bring in this flyer for verification.



LEEANNCHIN.COM

NH KIDS NEWS

[Click Here To See Our Weekly NH Kids News](#)

Meet Our Staff



Eva Carcione

Youth and Family Coordinator

Birthday:

December 18th

Favorite Snack:

Nabisco Nilla Waffer Cookies

Years at NH:

32 Years

Favorite School Memory:

In 4th grade we would play tag in the classroom with a look out for the teacher. We had a great time and felt sneaky.

Art Show

Congratulations to the following students who had their artwork selected for the upcoming 18th Annual Bloomington Art Show.

Ximena A R.

Said A.

Charlie C.

Greta G.

Fariza K.

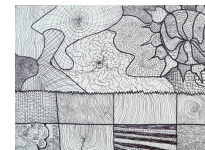
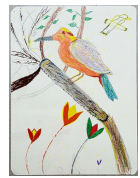
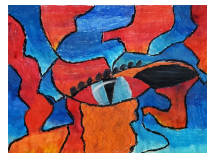
Cameron P.

Evan R.

Mary R.

Ari T.

Yen V.



Normandale Hills Calendar

May 2022

Monday	Tuesday	Wednesday	Thursday	Friday
2 3:20 Girls On The Run 3:30 Chess Club	3 4th Grade Field Trip 6:30 PTA Meeting	4 Kinder Field Trip 3:20 Girls On The Run	5 3:30 Piano Lessons	6 1st Grade Field Trip 2:15 School Rally 6:00 Spring Picnic
9 3:20 Girls On The Run 3:30 Chess Club	10 9:30 Gr. 1 Field Trip	11 3:20 Girls On The Run	12 3:30 Piano Lessons	13
BOGO Bookfair!				
16 3rd Grade Field Trip 3:20 Girls On The Run 3:30 Chess Club	17	18 3:20 Girls On The Run	19 3:30 Piano Lessons	20 10:00 School Rally Library Books Due! Festival Roll-Out (Virtual)
23 3:20 Girls On The Run 3:30 Chess Club	24 Kinder Field Trip	25 5th Grade Field Trip 3:20 Girls On The Run	26 2nd Grade Field Trip 3:30 Piano Lessons	27 10:00 5th Grade Band Concert
30 NO SCHOOL K-12 Memorial Day	31			