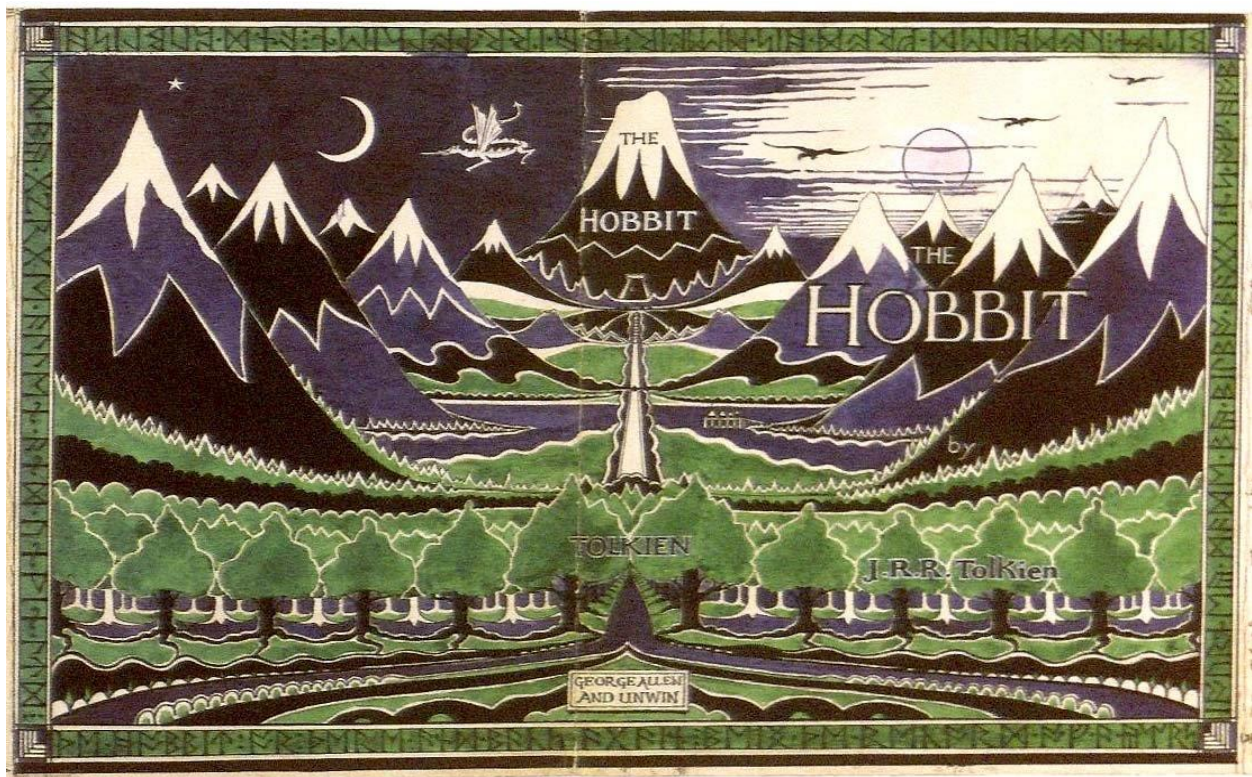


# Summer Reading Project

## The Hobbit by JRR Tolkien



## Project

This summer, you will read and study the novel *The Hobbit* by JRR Tolkien. As you read, select and complete activities in this packet that will assess your knowledge and understanding of the novel with focus the ELA standards that will be taught and assessed during Quarter 1.

Required: All students **must** complete the multiple-choice comprehension questions and **select one of the following activities** to complete in addition:

- Characterization – Select three characters and complete the characterization tasks
- Setting – Illustrate a key setting in the novel and write a summary describing the location and summarizing the key events that take place there
- Plot – Create a plot map for the novel
- Theme – Choose and analyze a key theme in the novel
- Essay – Write an essay about Bilbo’s character development throughout the novel

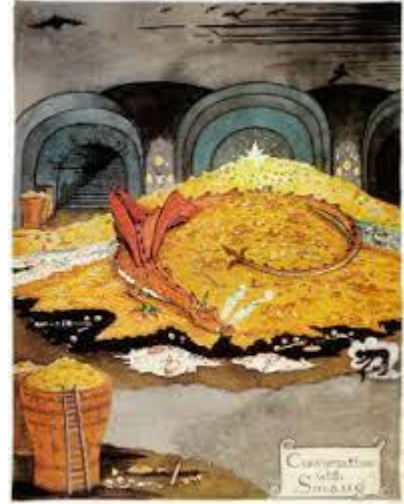
You may complete more than one of these tasks if you wish, but only the question responses and 1 activity is required.

Packets and assignments are due during the first week back in school. The project will be graded.

- Packet: 15 classwork points
- Quiz: 10 classwork points
- Project total: 25 classwork points

## Multiple-choice comprehension review

1. What is the name of Bilbo's hillside home?
  - a. Bag End
  - b. Crookhollow Bend
  - c. Brandywine End
  - d. Lothlorien
2. What happens to the trolls when they are exposed to sunlight?
  - a. They explode
  - b. Their strength is tripled
  - c. They turn to stone
  - d. They become invisible
3. What is Gollum's name for his ring?
  - a. Darling
  - b. Precious
  - c. Sting
  - d. Smaug
4. Who kills Smaug?
  - a. Gandalf
  - b. Bilbo
  - c. Thorin
  - d. Bard
5. Who is the master of Rivendell?
  - a. Elrond
  - b. Smaug
  - c. Gandalf
  - d. Celeborn



Don Estridge High Tech Middle School  
8<sup>th</sup> Grade Summer Reading Project  
The Hobbit

6. What effect does the magic ring have?
  - a. It turns the wearer to stone
  - b. It turns the wearer invisible
  - c. It triples the wearer's strength
  - d. It allows the wearer to harness the power of lightning
  
7. What two shapes can Beorn assume?
  - a. Human and eagle
  - b. Human and elk
  - c. Bear and eagle
  - d. Human and bear
  
8. Where is Smaug's lair?
  - a. Under the Lonely Mountain
  - b. In the mines of Moria
  - c. Under the Misty Mountains
  - d. Mirkwood
  
9. What is Smaug's weakness?
  - a. A missing scale above his heart
  - b. A fear of fire
  - c. A tendency to become depressed in winter
  - d. The Arkenstone weakens his powers
  
10. What is happening to Bilbo's belongings when he returns home?
  - a. They are being burned by the goblins
  - b. They are being stolen
  - c. They are being used by his neighbors
  - d. They are being auctioned



## Comprehension Activities – R1.1

---

### *Literary Elements*

ELA.8.R.1.1: Analyze the interaction between character development, setting, and plot in a literary text.

---

### **Characterization**

Select **3** of the characters listed below and complete one of the characterization tasks for each character (**1 task per character**):

#### **Characters: Bilbo Baggins, Gandalf, Thorin, Gollum, Bard**

- a. Character head – Identify key thoughts, actions, descriptions, traits and goals for your selected character
- b. STEAL Analysis chart – Analyze indirect characterization through examples of speech, thoughts, effects on other characters, actions and looks (facial expressions) demonstrated by your selected character throughout the novel
- c. Character illustration – Draw an illustration of your chosen character

### **Setting**

Illustrate an example of a key setting in the novel. Write a paragraph summarizing the key events that take place in your chosen location.

### **Plot**

Complete the plot map, identifying key events that take place in the novel

**a. Character head – Identify key thoughts, actions, descriptions, traits and goals for your selected character**

Chosen Character:

Thoughts  
\_\_\_\_\_  
\_\_\_\_\_  
\_\_\_\_\_

Description  
\_\_\_\_\_  
\_\_\_\_\_  
\_\_\_\_\_

Actions  
\_\_\_\_\_  
\_\_\_\_\_  
\_\_\_\_\_

Traits  
\_\_\_\_\_  
\_\_\_\_\_  
\_\_\_\_\_

Other  
\_\_\_\_\_  
\_\_\_\_\_  
\_\_\_\_\_

Feelings  
\_\_\_\_\_  
\_\_\_\_\_  
\_\_\_\_\_

Goals  
\_\_\_\_\_  
\_\_\_\_\_  
\_\_\_\_\_

## b. STEAL Analysis chart

Chosen Character:

The 5 elements of characterization can be explained with the acronym S.T.E.A.L.

**S**PEAK = **what** (dialogue) and **how** (speaker tags & tone) a character speaks to other characters.

**T**HOUGHTS = What a character **thinks, believes, values,** and what **motivates** a character.

**E**FFECTS on OTHERS = The **relationships** the character has with other others and how characters treat each other.

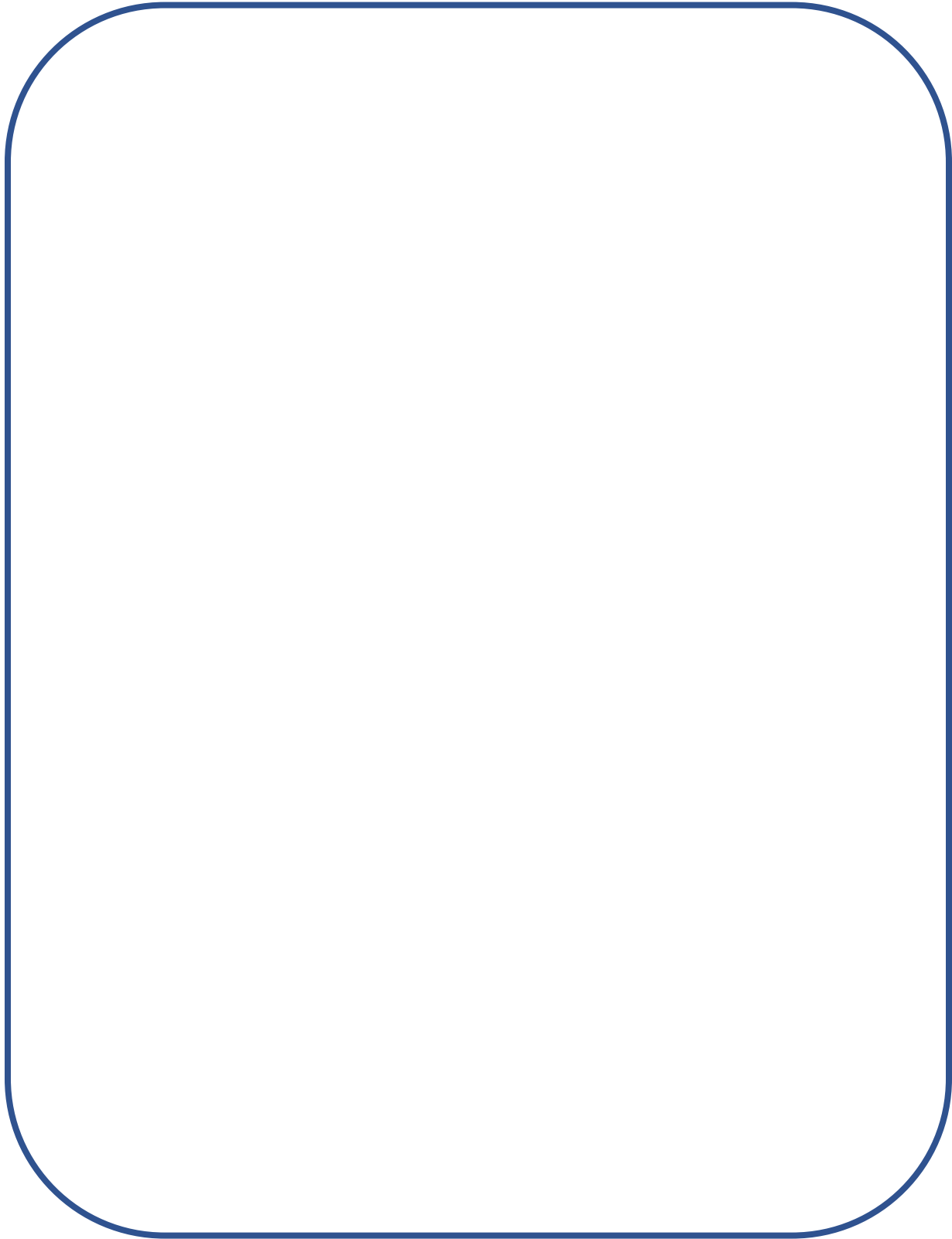
**A**CTIONS = How a character behaves, including how they **react** to people & events.

**L**OOKS = A character's **physical appearance.** This includes physical features, clothing, body language, etc.

**Directions:** It is time to take a closer look at the main character. Go back into the text to **identify** & **explain** aspect of the character. Find at least one textual example for each element of characterization (S.T.E.A.L.).

Example & pg. #	What insight does the textual example give us into the character?
<b>S</b> PEAK	
<b>T</b> HOUGHTS	
<b>E</b> FFECTS	
<b>A</b> CTIONS	
<b>L</b> OOKS	

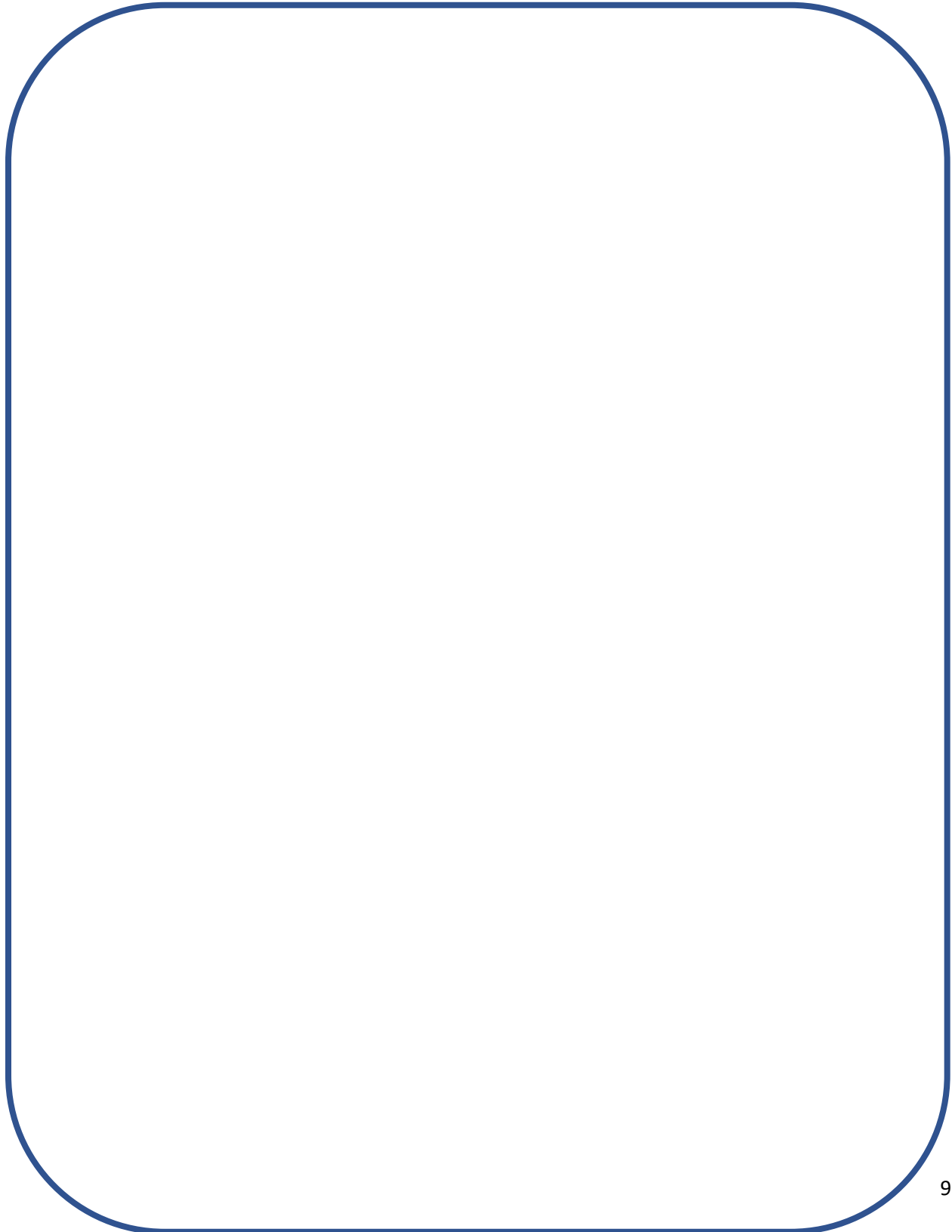
- c. **Character illustration** – Draw an illustration of your chosen character





**Setting**

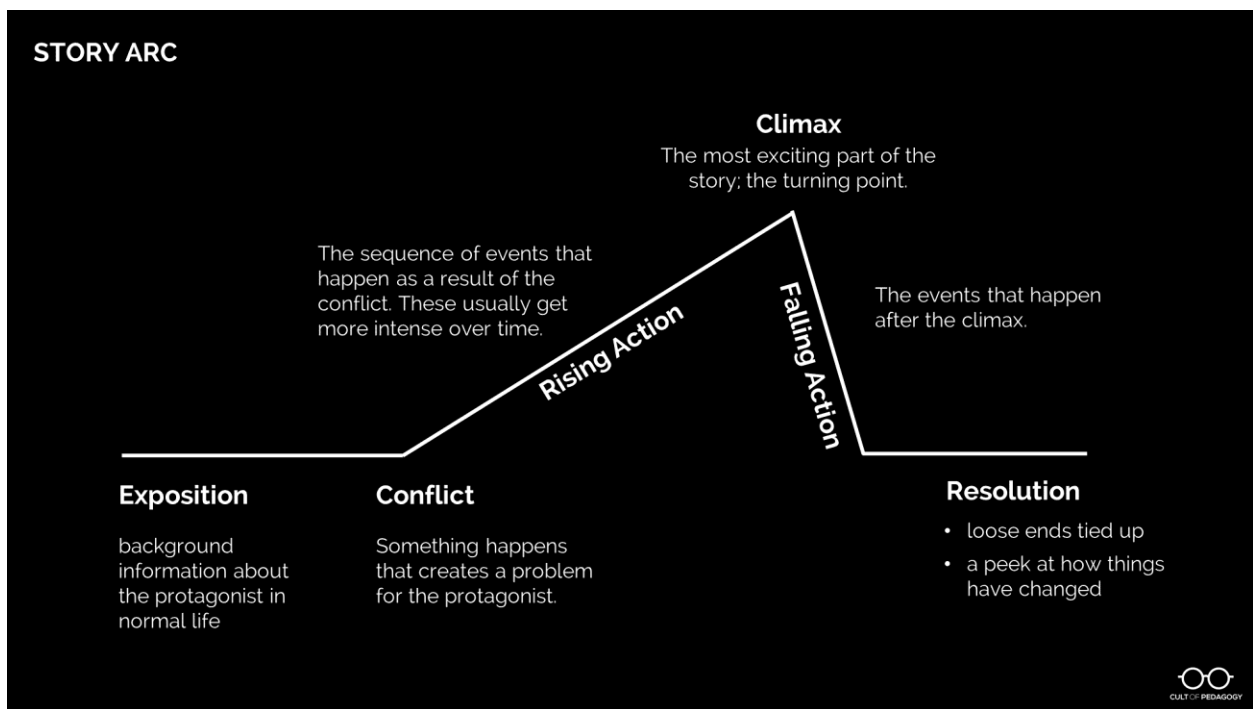
Illustrate an example of a key setting in the novel. Write a paragraph summarizing the key events that take place in your chosen location.





## Plot

Complete the plot map on the following page, identifying key events that take place in the novel. You may also create your own plot map, as long as it addresses each of the narrative stages (1-5) and addresses each question on the template.



Plot: the story's sequence of events  
 Title of Story: \_\_\_\_\_

**1**

**(1) Exposition**  
 Setting (Time & Place): \_\_\_\_\_  
 \_\_\_\_\_  
 \_\_\_\_\_  
 Main Conflict (problem): \_\_\_\_\_  
 \_\_\_\_\_  
 Characters: \_\_\_\_\_  
 \_\_\_\_\_  
 \_\_\_\_\_

**(2) Rising Action:** What is the main conflict? How does the conflict become more complex?

2.1 \_\_\_\_\_  
 2.2 \_\_\_\_\_  
 2.3 \_\_\_\_\_

**3**

**(3) Climax:** How does the conflict reach a peak? What happens to make this a turning point?

2.1 \_\_\_\_\_  
 2.2 \_\_\_\_\_  
 2.3 \_\_\_\_\_

**4**

**(4) Falling Action:** What is the solution to the conflict? How is it carried out?

\_\_\_\_\_

**5**

**(5) Resolution:** What is the final result?

\_\_\_\_\_

\_\_\_\_\_

\_\_\_\_\_

\_\_\_\_\_

\_\_\_\_\_

## Comprehension Activities – R1.2

---

### *Theme*

ELA.8.R.1.2: Analyze two or more themes and their development throughout a literary text.

### Benchmark Clarifications:

*Clarification 1:* For the purposes of this benchmark, theme is not a one- or two-word topic, but a complete thought that communicates the author's message.

*Clarification 2:* Students should continue to work with the concept of universal themes, although mastery isn't expected until 9th grade. A universal theme is an idea that applies to anyone, anywhere, regardless of cultural differences. Examples include but are not limited to an individual's or a community's confrontation with nature; an individual's struggle toward understanding, awareness, and/or spiritual enlightenment; the tension between the ideal and the real; the conflict between human beings and advancements in technology/science; the impact of the past on the present; the inevitability of fate; the struggle for equality; and the loss of innocence.

**Choose an underlying theme from the novel and answer the following bullets in a slide, google doc, lined paper with complete sentences and evidence.**

- **Courage:**
  - Identify specific instances where Bilbo demonstrates courage, overcoming fear and challenges. (LA.8.1.4.3)
  - Explain how Bilbo's bravery develops throughout the story and contributes to his personal growth. (LA.8.2.4.3)
- **Friendship:**
  - Analyze the relationship between Bilbo and the dwarves, tracing its evolution from initial dislike to camaraderie. (LA.8.1.4.3)
  - Explain how their shared experiences and hardships strengthen their bond of friendship. (LA.8.2.4.3)
- **Greed:**
  - Analyze how greed motivates different characters in the story. (LA.8.1.4.3)
  - Explain the consequences of greed for characters like Smaug and the dwarves. (LA.8.2.4.3)

## Writing Activity – C1.4

---

*Expository Writing*

ELA.8.C.1.4: Write expository texts to explain and analyze information from multiple sources, using relevant supporting details, logical organization, and varied purposeful transitions.

Benchmark Clarifications:

*Clarification 1:* See [Writing Types](#).

---

*Writing to Explain (12 points)*

*The Hobbit* is a story about how one comfortable hobbit is taken from his home and thrust into a journey, changing and growing along the way. From this novel, describe Bilbo's journey and explain three ways the character evolves over the course of the novel. As part of your writing, develop a thesis to focus your thinking in response to the question above. Support your thesis with evidence demonstrating what this character learns, and how they change, by leaving their “comfort zone.”

You may include your writing below, or submit a handwritten or digital copy of the essay separate from this packet

---

---

---

---

---

---

---

---

---

---



