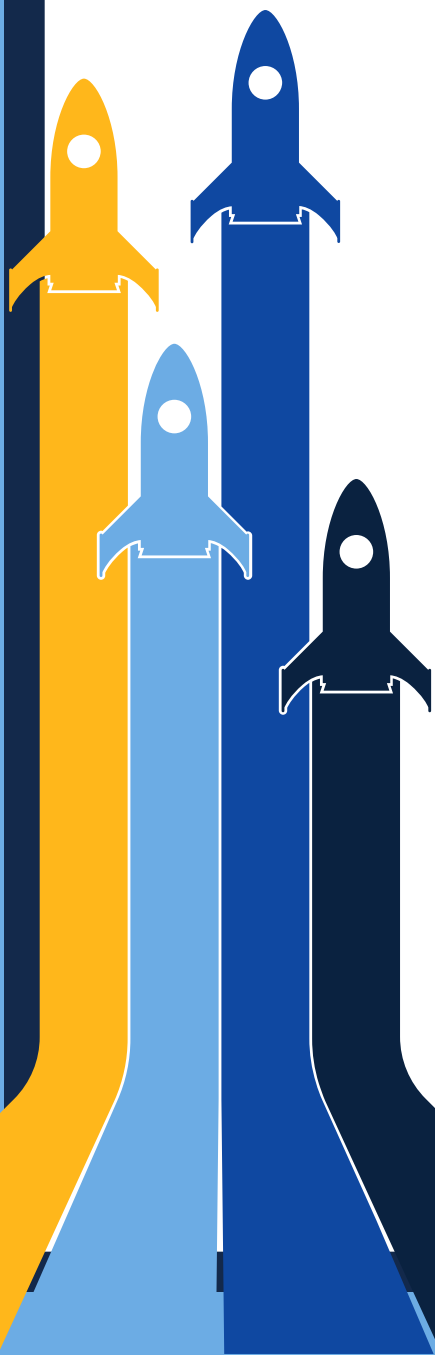


# ROCKET

## PARENT INFO



*Learn.*

*Grow.*

*Belong.*

**SAVE THE DATE**

**May 9 will be our End Of The Year Launch  
Party! 5:00-8:00**

# **PROMOTION**

**for our 5<sup>th</sup> Graders**

**When:** May 21, 2025

**Time:** 8:30 am - doors will open at 8:00

**Where:** RVES Cafeteria & Gym

**Who:** Immediate family members of our current 5<sup>th</sup> graders

We will not dismiss siblings from classrooms. If families want them to attend, they will need to come with the family and can be signed in after the ceremony.

5<sup>th</sup> graders will need to be at school at normal time in order to participate.

## **PLATINUM SPONSORS**



A heartfelt "thank you!" to our wonderful sponsors for their generous support of our school. Please consider supporting the businesses who help make a positive impact on our school community.

## **GOLD SPONSOR**



## **SILVER SPONSORS**



## **BRONZE SPONSORS**



*Please Return*

# ALL LIBRARY BOOKS

**Students should return all library books  
this week to avoid library fees.**



# Carline

We have 15 more days of the carline. We take safety very seriously. If you do not have your car tag with you, you will need to park and take your license into the front office. If you usually walk across the crosswalk to get your student, please bring your car tag with you. Even if you have done this all year, we need you to still bring your tag with you. If you do not have your tag, you can go in the office and get a new one.





**FREE EVENT!!**  
BROUGHT TO YOU BY RVES PTO

**OUTDOOR  
GAMES!**

END OF YEAR  
**LAUNCH  
PARTY**

**FRIDAY, MAY 9  
5-8 PM**

**FACE  
PAINTING!**

**CHORUS  
CONCERT!**  
WILL BEGIN AT 7:00

**FOOD  
TRUCKS!**

**END OF YEAR  
BASH  
VOLUNTEERS  
CLICK HERE!**

**ART SHOW!**

**VOLUNTEER FOR  
BOOKFAIR, CLICK  
HERE  
BOOKFAIR!**



# 24-25 SCREADY TEST DATES

## ALL 3-5 GRADE STUDENTS



**1** ~~READING A~~  
~~APRIL 30, 2025~~



**2** ~~READING B~~  
~~MAY 1, 2025~~



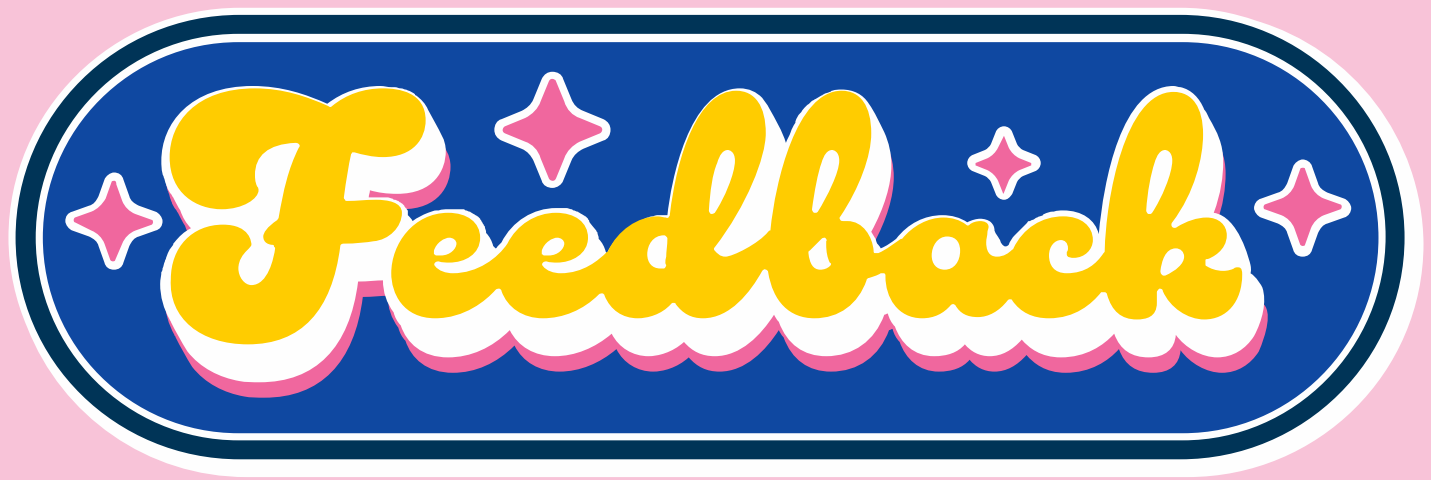
**3** WRITING  
MAY 6, 2025



**4** MATH  
MAY 8, 2025



**5** SCIENCE  
MAY 12, 2025



**This is for ALL parents that will have students at RVES next year!!**

**Part of our Title I requirements is to elicit feedback from parents. Please use the form linked below to share your thoughts on your child's academic performance in Reading and Math. Your feedback is an important part of the process as we begin to prepare for the 2025–26 school year. Complete by Tuesday May 27, 2025.**





**LOADS OF  
FUN!!**



# **FIELD** *day* **2025**

**May 16**  
**Volunteers for K-  
4th Grade**  
**sign up HERE!**



**May 15**  
**Volunteers for**  
**5th Grade**  
**sign up HERE!**



**Can't volunteer,  
but still want to  
help?**



**Shop our  
wish list!**



**email [neiconim@fortmillschools.org](mailto:neiconim@fortmillschools.org) with questions**



# RIVES BOOK FAIR 2025



April 30-  
May9

## DON'T FORGET!!

- Set up your child's E- Wallet today! Click [HERE](#)
- Volunteers needed! Click [HERE](#)

The background of the entire image is a vibrant, abstract collage of colors including orange, yellow, pink, blue, and purple, with visible brushstrokes and textures. A solid blue rectangular panel is centered on the page, containing the text.

Riverview Elementary School

# Art Show

Friday, May 9th, 2025  
at the Spring Fling  
5:30-8:00pm

All rocket students will  
have artwork on display



# NEW SCHOOL STORE!



CHECK  
IT OUT  
↓

✦ NEW DESIGNS!

✦ NEW PRODUCTS!

✦ LOCAL PICK UP/ SHIP TO  
HOME OPTIONS!

✦ FASTER TURN  
AROUND!

CLICK **HERE** TO  
PURCHASE!



# Notes from the NURSE!!

**Medication not picked up by May 27 will be thrown away, so please make arrangements to come to the school to get your child's medication. Medication cannot be sent home with students.**

## **Clothing:**

If your child has borrowed any clothing items from the school, please wash and return the items as soon as you can (do not return used underwear). Please keep in mind that it's often a good idea to send in an extra set of clothing for your child to have on hand in the event of an "accident".

We have a clothing closet at school and are accepting gently used **pants and shorts** (elastic waist is best), socks, shoes and jackets, as well as new, unused underwear. We do not need shirts at this time.

## **Medication Reminders**

Please review the following guidelines in the event that your student needs to take medication at school:

- A medication consent is required for any medication given at school.
- Students are not allowed to carry medications on the bus or school property. All medications should be taken to the front office by an adult, aged 18 or over.
- If the medication is over-the-counter, there must be appropriate dosing instructions on the label for the child's age. The bottle or box has to be new and unopened. The medication consent must be signed by the parent. A doctor's signature is NOT required.
- If the medication is a prescription, it must have a prescription label on it. The medication consent must be signed by the parent AND the ordering physician.

For more information concerning medications at school and other subjects related to Student Health Services, please go to the Fort Mill School District website (see link below). You may also print medication consents using this link.

<https://www.fortmillschools.org/departments/student-health-services/student-nursing-services>

**Notify Nurse McLelland if your child will be attending any district sponsored summer programs so we can communicate with those schools concerning your child's healthcare needs.**



# Notes from the NURSE!!

If your student has a medical condition requiring an emergency plan and/or medication, you should receive paperwork via email before the last day of school. Emergency plans, medication consents and other doctor's orders must be completed yearly. Please have these forms filled out over the summer by your child's healthcare provider. Please contact Nurse McLelland if you have any questions about your student's healthcare needs.

## School and Childcare Exclusion

The South Carolina Department of Public Health "DPH" (formerly DHEC) publishes the School and Childcare Exclusion List each year. The Exclusion List explains how long ill children and staff should stay out of school or childcare, and what is needed before the child/student or employee is permitted to return.

To help protect well children from unnecessary exposure to contagious or infectious diseases, South Carolina requires that children and staff with certain diseases and conditions stay home from school or childcare while contagious. For the complete exclusion list, click on: The South Carolina Department of Public Health (DPH), formerly SC DHEC, is currently reporting a higher number than average of Influenza (Flu) cases.

<https://dph.sc.gov/sites/scdph/files/2025-01/2025-Flu-Watch-MMWR-WK-03.pdf>

It is even more important during flu season to encourage our students to wash their hands and cover their mouths and noses when they sneeze or cough. Please work with your children at home and have them practice thorough handwashing.



*Repeat*

The word 'Repeat' is written in a large, stylized, blue cursive font with a dark blue drop shadow. It is surrounded by several white circular arrows, each with a black outline and a black arrowhead pointing clockwise, suggesting a cycle or repetition.



*Repeat*

The word 'Repeat' is written in a large, stylized, pink cursive font with a dark blue drop shadow. It is surrounded by several white circular arrows, each with a black outline and a black arrowhead pointing clockwise, suggesting a cycle or repetition.



*Repeat*

The word 'Repeat' is written in a large, stylized, green cursive font with a dark blue drop shadow. It is surrounded by several white circular arrows, each with a black outline and a black arrowhead pointing clockwise, suggesting a cycle or repetition.

**Everything after this page is a  
repeat from last week. If you  
didn't read it last week, be sure  
to check it out this week!**



# Graduation Yard Signs

**\$25**

Celebrate your graduate with a festive outdoor sign!  
Available with both generic and personalized options for  
RVES graduates, future Jackets and future Timberwolves!

SCAN ME



**Order by April 30!**

Email [rvespto@gmail.com](mailto:rvespto@gmail.com) with  
questions.

**Pick up from Pony Express**  
3160 Highway 21  
Ste 103

# GET INVOLVED

We would LOVE for you to join us at one of our next meetings!

## SIC

15 APR 2025, TUE



2:30 – 3:30pm

SIC Meeting

20 MAY 2025, TUE



2:30 – 3:30pm

SIC Meeting



## LOST & FOUND

We plan to donate all unclaimed items in the lost and found at the end of each month. Please be sure to put your student's name in their coats, shirts, hats, etc. Before we donate, we will check each items and try our best to reunite the articles of clothing with their owners.



# ATTENDANCE INFORMATION

You can find more information about attendance on page 5 of the handbook. Katie Pattinson is our attendance clerk. You can contact her at [pattinsonk@fortmillschools.org](mailto:pattinsonk@fortmillschools.org). You can also submit any absence notes using the link below.

**REPORT AN  
ABSENCE  
HERE**

## Attendance Matters



### South Carolina Compulsory Attendance Law



"South Carolina Compulsory Attendance Law requires that a parent or guardian shall require his child to attend regularly a public or private school or kindergarten of this State which has been approved by the State Board of Education, a member school of the South Carolina Independent Schools and Association, a member school of the South Carolina Association of Christian Schools, or some similar organization, or a parochial, denominational, or church-related school, or other programs which have been approved by the State Board of Education from the school year in which the child is five years of age before September first until the child attains his seventeenth birthday or graduates from high school."

#### Bell Schedule 7:35-2pm

Your child needs to be in their seats at 7:35. If you are arriving as the bell rings? Your student is LATE and you MUST enter the building to sign them in as tardy.

### Lawful vs Unlawful Absences

#### Lawful:

- Absences caused by a student's own illness
- Absences due to an illness or death in the student's immediate family
- Absences due to a recognized religious holiday of the student's faith
- Absences due to activities that are approved in advance by the principal.



#### Unlawful:

- Absences of a student without the knowledge of his or her parents
- They have exceeded the five days that may be excused with a parent note.
- A student is absent without acceptable cause with or without knowledge of his/her parents.
- They are out of town on trips or vacations.



If you have any questions regarding your child's attendance, contact our PowerSchool clerk:  
Katie Pattinson  
[Pattinsonk@fortmillschools.org](mailto:Pattinsonk@fortmillschools.org)  
803-548-8299

## REMINDER

- A maximum of 5 parent excuse notes are allowed for lawful absences per school year
- Medical/Dental notes do not count towards parent notes

### Truancy

- A child age 6 to 17 years meets the definition of a truant when the child has three consecutive unlawful absences or a total of five unlawful absences.
- Habitual Truant A "habitual" truant is a child age 12 to 17 years who fails to comply with the intervention plan developed by the school, the child, and the parent(s) or guardian(s) and who accumulates two or more additional unlawful absences. This child may need court intervention and an initial truancy petition may be filed.
- Chronic Truant A "chronic" truant is a child age 12 to 17 years who has been through the school intervention process, has reached the level of a "habitual" truant, has been referred to Family Court and placed on an order to attend school, and continues to accumulate unlawful absences. Should other community alternatives and referrals fail to remedy the attendance problem, the "chronic" truant may be referred to the Family Court for violation

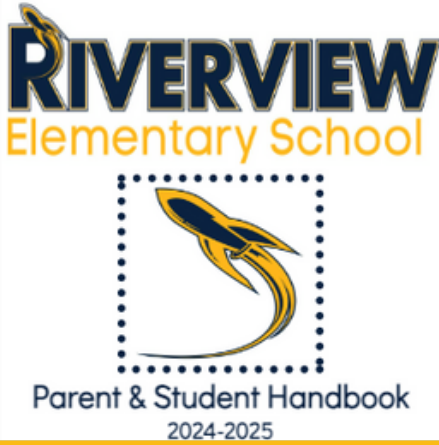




# Important Parent Links



CLICK EACH BOX BELOW TO BE DIRECTED TO THE CORRESPONDING INFORMATION



**STUDENT  
HANDBOOK**



**TRANSPORTATION  
CHANGE**



**STUDENT  
NUTRITION**



**REPORT AN  
ABSENCE**



**RIVERVIEW  
WEBSITE**



**FMSD  
CURRICULUM**

10:30-11:05	2nd
10:50-11:25	3rd
11:10-11:45	K
11:25-11:55	4th
11:35-12:10	1st
12:05-12:30	5th

**LUNCH  
SCHEDULE**



**VOLUNTEER  
At RVES**

Click the astronaut for the updated color rotation for related arts.



**RELATED ARTS  
SCHEDULE**



# CAMP information

Check out the next  
few page for  
upcoming camps  
for our students.

