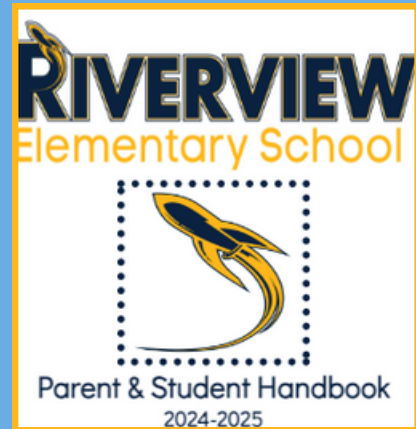




# Rocket Parent Info



Please click the image on the right to access our Parent and Student Handbook.



## Transportation changes!

You can find more information about transportation changes on page 8 of the parent and student handbook. Jonna Storms will be your contact person for all changes. You can contact her at [storms@fortmillschools.org](mailto:storms@fortmillschools.org).

You can also submit changes using the link below.

**[REPORT A TRANSPORTATION CHANGE HERE](#)**

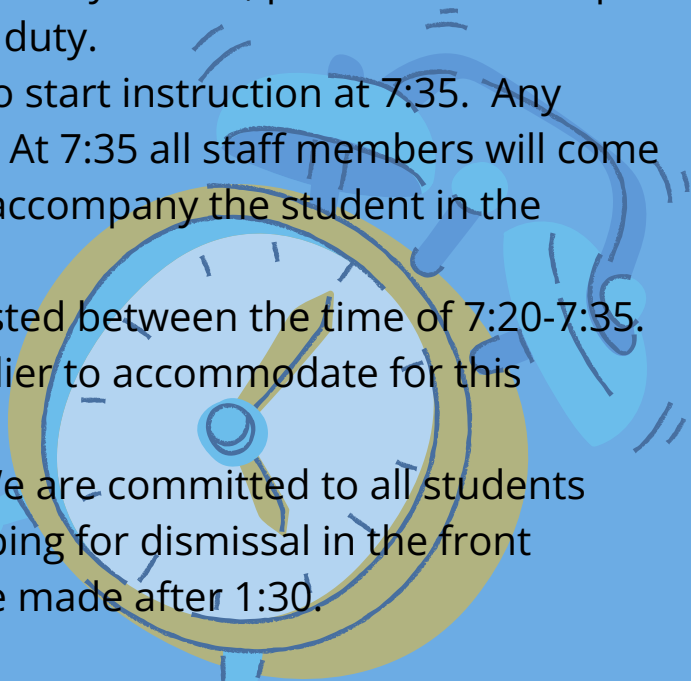
## SCHOOL 7:35-2:00 HOURS

Our doors open at 7:05 AM. Staff will report to duty at 7:05, please do not drop students off prior to staff members reporting to duty.

Students should be in their classroom ready to start instruction at 7:35. Any student arriving after 7:35 will be marked tardy. At 7:35 all staff members will come in from duty. At this time, an adult will need to accompany the student in the building to sign them in.

We know that the carline can get more congested between the time of 7:20-7:35. Please make arrangements to get in the line earlier to accommodate for this congestion.

We will begin the dismissal process at 2:00. We are committed to all students making it home safely, therefore we begin prepping for dismissal in the front office at 1:30. No transportation changes can be made after 1:30.



# Notes from the NURSE!

## Vision screening:

The Lion's Club will be at RVES on Friday, September 20th to screen vision on our students. If your student fails the screening, a vision referral will be sent home within a couple of weeks. If you have concerns about your child's vision, please contact Nurse McLelland.

## Clothing:

If your child has borrowed any clothing items from the school, please wash and return them as soon as you can (do not return used underwear). Please keep in mind that it's often a good idea to send in an extra set of clothing for your child to have on hand in the event of an "accident".

The nurse has a clothing closet and is accepting gently used pants and shorts (elastic waist is best), socks, shoes and jackets, as well as new, unused underwear. We do not need shirts at this time.

## It's Flu Season!

The CDC and SC DHEC recommend that everyone 6 months and older get the flu vaccine. Please click on this link for more information:

<https://scdhec.gov/health/flu/flu-vaccine-clinics>



# FORT MILL SCHOOL DISTRICT PARENT UNIVERSITY



**OCTOBER 5, 2024**

**FOREST CREEK MIDDLE SCHOOL**

**9:00 AM - 12:00 PM**

## WHAT TO EXPECT

- ★ INFORMATIVE SESSIONS FROM COMMUNITY PARTNERS ON EDUCATION, PARENTING, SAFETY, MENTAL HEALTH AND WELLNESS
- ★ VENDORS FROM MENTAL HEALTH, WELLNESS, AND COMMUNITY RESOURCES
- ★ RSVP TO SIGN UP & RECEIVE MORE INFORMATION
- ★ CHILDCARE AVAILABLE WITH RSVP BY SEPTEMBER 27
- ★ QUESTIONS? EMAIL LEWISK@FORTMILLSCHOOLS.ORG

**VISIT THE LINK BELOW TO RSVP:**

<https://shorturl.at/DMyUd>





Our first All Pro Dad meeting is coming up on **September 20th from 7:00 - 7:30 in the cafeteria**. This is a great opportunity for dads and their kids to grab a bite and have some intentional time together. Due to space limitations we will be limiting our group to 60 total attendees so register quickly! Please RSVP by clicking on the All Pro Dad's image above. Scroll to the bottom to register and see our schedule for the year

**Parking** - To avoid the normal car line, please pull into the bus entrance (next to the soccer fields) and turn right into the small lot. Tell the person at the front door you are here for APD.



CATAWBA  
RIDGE HIGH  
SCHOOL

**TRUNK  
*OR*  
TREAT**

SATURDAY  
**OCTOBER 19**

STUDENT  
PARKING LOT  
2:00 - 5:00 P.M.

CANDY • FACE PAINTING • GAMES  
HAYRIDE • FOOD TRUCKS

RSVP (CLICK ON LINK): [CRHS HOSTS TRUNK OR TREAT](https://www.fortmillschools.org/crhs-hosts-trunk-or-treat)  
FOR MORE INFORMATION EMAIL [MARTINMD@FORTMILLSCHOOLS.ORG](mailto:MARTINMD@FORTMILLSCHOOLS.ORG)

*Don't forget to wear your costume! Family  
Photo Opportunity available!*



# PTO!

Can't join in person, feel free to join us virtually. Click [HERE](#) for link.

Open Meeting: September 24, 2024

Time: 7:45-8:30 AM

Location: RVES Cafeteria

Be sure to bring your license in to sign in for the meeting.



## DOT DAY

International Dot Day, a global celebration of creativity, courage and collaboration, began when teacher Terry Shay introduced his classroom to Peter H. Reynolds' book *The Dot* on September 15, 2009.

To Celebrate, wear polka-dots Monday,  
September 16!

## Cafeteria Info.

You can access the student nutrition website for the district [HERE](#). Topics of interested are listed below.

- Free & Reduced Meal Application
- Breakfast and Lunch Menus
- Add Money to Student Lunch Account
- Birthday Celebrations



# PICTURE DAY IS HERE!

WITH

# CAROLINA

PHOTOGRAPHY INC

Riverview Elementary School  
Picture Date: 9/24/24  
Job Key: CVL6XTJT

## ORDER NOW!!

**Follow these instructions to place your order.**

Step 1: go to <http://www.carolinaphoto.net/> or scan QR code

Step 2: enter your schools job key from above

Step 3: complete the student data query

Step 4: pick your package and submit your order.



SCAN ME

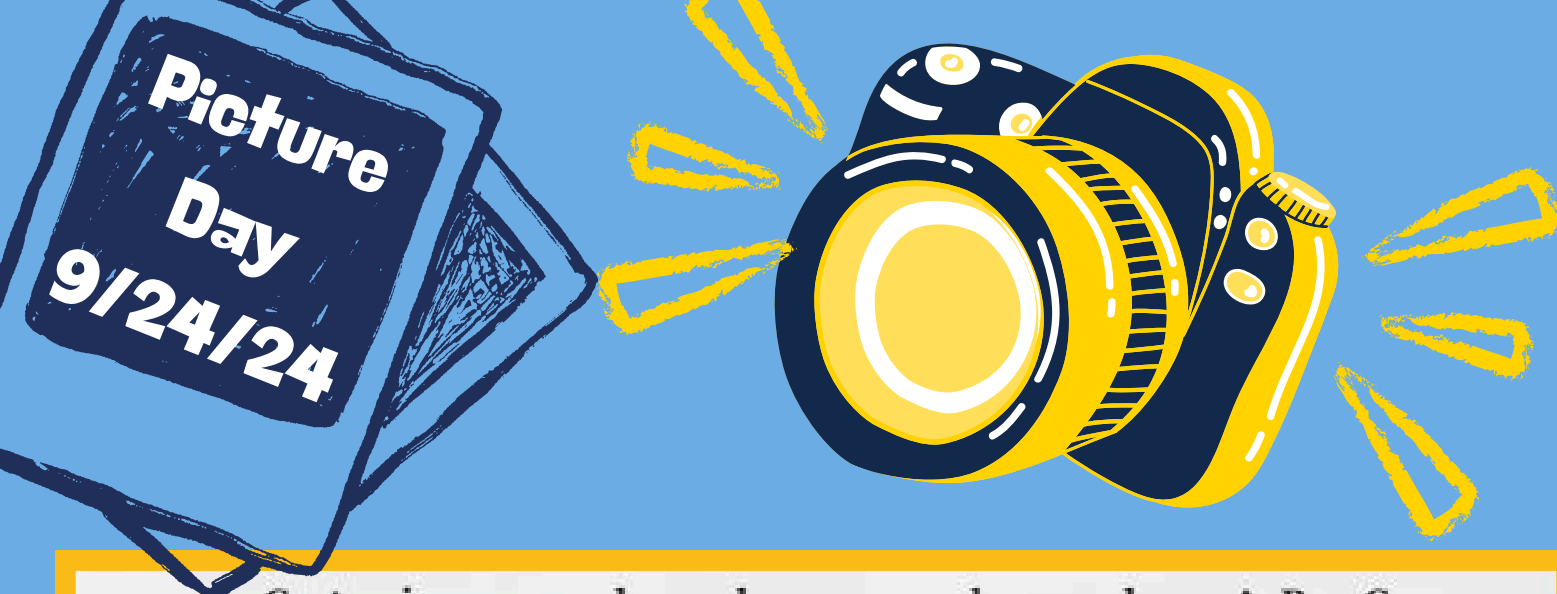


**[www.carolinaphoto.net](http://www.carolinaphoto.net)**  
**(704) 483-5862**

Credit card orders must be submitted online.

*(A 3.9% transaction fee will be added to all credit card orders.)*

Cash/checks accepted on picture day with provided envelope.



Customize your package when you purchase packages A, B or C

**A** \$40

Select any 6 sheets

1 - 8x10  
2 - 5x7's  
4 - 3x5's  
8 - 1.75 x 2.5 Wallets  
1 - 5x7 & 2 - 3x5's  
1 - School Spirit Portrait

**BONUS!**  
Includes FREE  
image download.  
\*Email required

**Best Value**

**B** \$35

Select any 4 sheets

1 - 8x10  
2 - 5x7's  
4 - 3x5's  
8 - 1.75 x 2.5 Wallets

**Most Popular**

**C** \$30

Select any 3 sheets

1 - 5x7 & 2 - 3x5's  
2 - 3x5's  
8 - 1.75 x 2.5 Wallets

**D** \$25

1 - 5x7  
1 - 3x5  
4 - 1.75 x 2.5 Wallets

Digital Packages N or PN

**N** \$20

Single image  
download  
**Available for online purchase only**

**PN** \$30

Premier image download  
Includes all backgrounds  
**Available for online purchase only**

### A LA CARTE

H Multi-Pack.....	\$16	M 2 - 3x5's.....	\$16
J School Spirit Folder.....	\$16	R Retouching.....	\$10
K 1 - 8x10.....	\$16	E Name & Year.....	\$3
L 1 - 5x7.....	\$16		

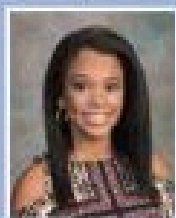


School Spirit Portrait



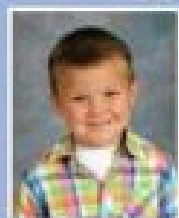
Multi-Pack

Standard  
Background



No Charge

Name Included  
with "E" Packages



Name w/ Year

### CUSTOMIZE IT! Add a Background for only \$5.00

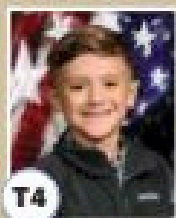
Make your package & background choice on the envelope. Portraits will be printed with the background of your choice.



T2



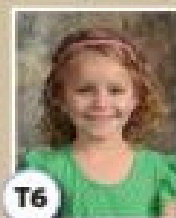
T3



T4



T5



T6

More background options available when purchasing online.





# What are we **LEARNING?**

We are excited about the learning taking place at Riverview. Are you curious what your student is learning this year? Check out the **Fort Mill School District's Curriculum Website**

for more information. We are committed to teaching the South Carolina State Standards.

## **PARENT TIPS #2**

Ways to LEARN letters without holding a pencil.....

Play alphabet bingo.

Play mystery writing: take the student's hand and write a letter with his/her hand while his/her eyes are closed. Have the student guess what the letter is.

Cut out letters with scissors.

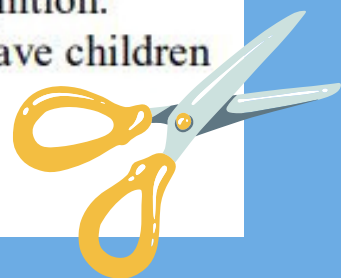
Provide wooden, cardboard, or paper shapes to build alphabet letters.

Use Scrabble tiles to match letters, build words or sentences.

Use computer games and programs to reinforce letter recognition.

Use masking tape or rope to make letters on the floor and have children trace letters with their feet

walk or crawl on them following the path of the letter  
drive toy cars on them



# Lunch Visitors

Due to increased security protocols and limited seating, parents and guardians may join their child during their lunch period up to four times per year per child. Visitors coming for lunch should limit the number of adults to two per visit. Be sure to bring your ID with you. Adults wanting to eat lunch with students must be on the student's contact list in powerschool.

## Lunch Schedule

10:30-11:05	2nd
10:50-11:25	3rd
11:10-11:45	K
11:25-11:55	4th
11:35-12:10	1st
12:05-12:30	5th



We discourage lunch guests for our 4k CERDEP students. The students eat in their classrooms and often have flexible schedules due to related arts, recess, and nap time.

## WALKERS

Walkers will exit the building at the beginning of the dismissal process. They will walk with a staff member to the intersection of buses and carline. Please bring your yellow car tag with you when meeting your student.

## BREAKFAST IN THE CLASSROOM

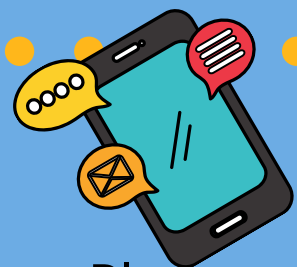
Breakfast is served in the classroom daily from 7:20-7:35. Instruction begins at 7:35 each morning. Students are able to order school breakfast each day. They must let their teacher know they want to order the day before. If students are not ordering school breakfast, we ask that they please eat at home. Due to food allergies, we are limiting foods brought into the classroom.



# THE CARLINE



Please be careful in the carline. Several reports have been made of children standing out of sunroofs. While we cannot control every action in the carline, we want to advocate for everyone's safety.



## Cell Phones

Please refrain from using your cell phones once the carline begins moving. We have over 120 cars picking up each afternoon and want to ensure the safety of everyone.



## NOT AN EXIT

We ask that you not cut through this bottom parking lot to exit. This lot is used for our daycare loading zone. If you need to pull in to adjust carseats, that is completely fine, but please exit using the normal carline. The safety of our students is very important. We are trying to minimize the amount of traffic entering this area while students are loading.



# ATTENDANCE INFORMATION

You can find more information about attendance on page 5 of the handbook. Katie Pattinson is our attendance clerk. You can contact her at [pattinsonk@fortmillschools.org](mailto:pattinsonk@fortmillschools.org). You can also submit any absence notes using the link below.

**REPORT AN  
ABSENCE  
HERE**

## Attendance Matters



### South Carolina Compulsory Attendance Law



"South Carolina Compulsory Attendance Law requires that a parent or guardian shall require his child to attend regularly a public or private school or kindergarten of this State which has been approved by the State Board of Education, a member school of the South Carolina Independent Schools and Association, a member school of the South Carolina Association of Christian Schools, or some similar organization, or a parochial, denominational, or church-related school, or other programs which have been approved by the State Board of Education from the school year in which the child is five years of age before September first until the child attains his seventeenth birthday or graduates from high school."

#### Bell Schedule 7:35-2pm

Your child needs to be in their seats at 7:35. If you are arriving as the bell rings? Your student is LATE and you MUST enter the building to sign them in as tardy.

### Lawful vs Unlawful Absences

#### Lawful:

- Absences caused by a student's own illness
- Absences due to an illness or death in the student's immediate family
- Absences due to a recognized religious holiday of the student's faith
- Absences due to activities that are approved in advance by the principal.

#### Unlawful:

- Absences of a student without the knowledge of his or her parents
- They have exceeded the five days that may be excused with a parent note.
- A student is absent without acceptable cause with or without knowledge of his/her parents.
- They are out of town on trips or vacations.



## REMINDER

- A maximum of 5 parent excuse notes are allowed for lawful absences per school year
- Medical/Dental notes do not count towards parent notes

## Truancy

- A child age 6 to 17 years meets the definition of a truant when the child has three consecutive unlawful absences or a total of five unlawful absences.
- Habitual Truant A "habitual" truant is a child age 12 to 17 years who fails to comply with the intervention plan developed by the school, the child, and the parent(s) or guardian(s) and who accumulates two or more additional unlawful absences. This child may need court intervention and an initial truancy petition may be filed.
- Chronic Truant A "chronic" truant is a child age 12 to 17 years who has been through the school intervention process, has reached the level of a "habitual" truant, has been referred to Family Court and placed on an order to attend school, and continues to accumulate unlawful absences. Should other community alternatives and referrals fail to remedy the attendance problem, the "chronic" truant may be referred to the Family Court for violation

If you have any questions regarding your child's attendance, contact our PowerSchool clerk:  
Katie Pattinson  
[Pattinsonk@fortmillschools.org](mailto:Pattinsonk@fortmillschools.org)  
803-548-8299

