

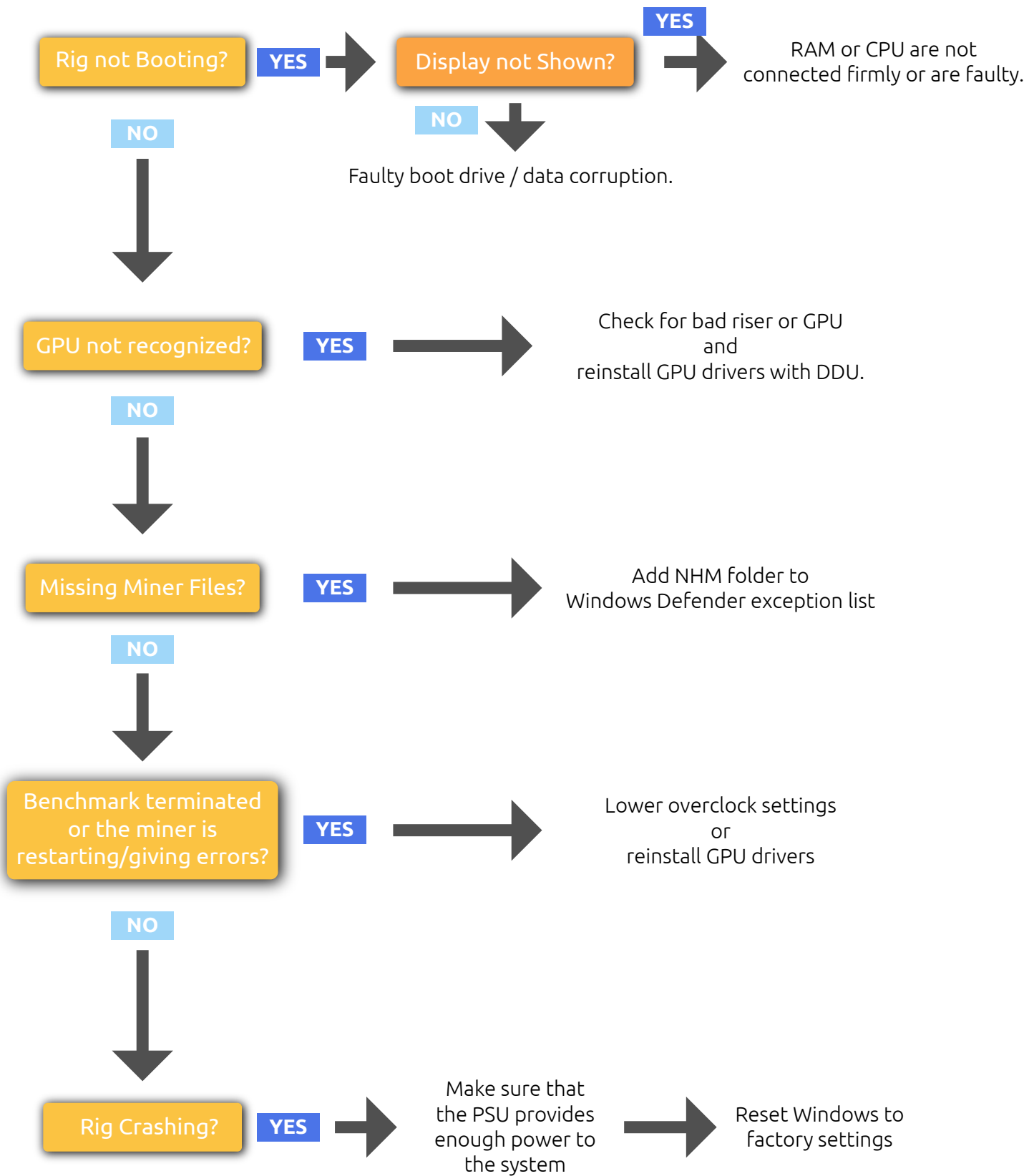
NiceHash Miner

Troubleshooting Guide

Table of contents

General Troubleshooter	3
Hardware Issue	4
Riser Failure	
Power Supply Issue	
Other Hardware Issue	
Software Issue	5
Driver Related Issues	
Windows Related Issues	
NHM Related Issues	
Common Issues	6

GENERAL TROUBLESHOOTER



Hardware Issue

Riser failure

90% of the issues related to rig crashing or not detecting GPU are related to bad USB PCIe x1 to x16 riser failure. The only way to fix it is to change it. First, a user needs to find out which riser is bad:

1. *Disconnect ½ of the GPUs and risers, leave the other ½ connected and start mining.*
 - a. *If the rig is running OK, then the riser in the other ½ is bad. Repeat halving until you locate the bad riser and change it.*
 - b. *If the riser is not working, the fans on the GPU will most likely not spin.*
2. *Visually check for the power supply cable that goes into the riser from PSU. Sometimes the yellow power cable gets burned at the connector. This can cause the riser to fail. **Note that only 2 risers can be connected to 1 SATA power cable.***

Power Supply Issue

The total power supply wattage should be at least **x1.2** the amount of total rig consumption.

Example: 6x 1060 6GB(6x90W) + Motherboard(50W) + CPU(50W) = 640W x 1.2 = **768W**

Things to note:

- *If a user is using 2 PSUs on 1 rig, the GPU and riser connected to it, should be powered from the same PSU.*
- *Make sure all cables are firmly connected. Sometimes 6+2 PCIe power connector(or other cables) might be loosely connected and cause the GPU not to be detected.*

Other Hardware Issues

Wrong motherboard BIOS settings

Make sure BIOS settings are correct(PCle speed gen2, above 4g decoding enabled)

Wrong video output

Make sure that the video output inside BIOS is set to GPU and not onboard GPU(via motherboard)

System specification does not meet algorithm requirements

Not enough VRAM - DaggerHashimoto(3.66VRAM), Grin29(6GB), Grin31(8GB). Note that Windows 10 uses 0.5GB, meaning that these algorithms will work on Windows 7, but not on Windows 10.

Software Issue

Driver Related Issues

If there are errors with **GPU detection, 3rd party miner crashing/restarting, not able to set overlocks or low hashrate**, the issue might be related to the drivers.

Follow these steps to re-install GPU drivers:

1. Download correct **standard version** drivers from the AMD or NVIDIA website.
2. Download DDU.
3. Disconnect LAN cable from your rig.
4. Run DDU, delete the drivers and restart your rig.
5. Install GPU drivers.
6. Restart your rig again and connect the LAN cable back.

Note: Make sure that you downloaded STANDARD version of NVIDIA drivers here:

<https://www.nvidia.com/Download/Find.aspx#>

Upon Windows installation or when deleting drivers, Windows tends to auto-install GPU drivers, that is why it is recommended to disconnect the rig from the web.

Another, more detailed way to install drivers is to install it for each added GPU:

1. Download correct drivers from the AMD or NVIDIA website.
2. Download DDU.
3. Disconnect LAN cable from your rig.
4. Run DDU, delete the drivers and shut down your rig.
5. Disconnect all GPUs/risers and connect only 1 GPU.
6. Install the GPU driver and shut down the rig.
7. Connect only 1 more GPU and install the driver (do not run DDU now).
10. Repeat until all GPUs are connected.
11. Restart your rig again and connect the LAN cable back.

Note that AMD drivers allow a **COMPUTE MODE** in **AMD settings app**, that **increases** hashing speed

Windows Related Issues

Most common Windows related issues are:

1. Windows Defender - NiceHashMiner.exe or 3rd party miners are deleted
 - 1.1. Add an NHM folder exception to Windows Defender
2. .NET installation missing - when NHM or some of its components are not launching.
 - 2.1 Install .NET

NHM Related Issues

If you are having issues with NHM, you can always install one or two versions older release to find out if the issue is related to the latest NHM.

If there are issues with algorithms switching(some algorithms might be causing a rig or NHM to crash), disable all but one algorithm and try mining. This way you will eliminate potential issues. If you find out that a miner is causing issues you can disable it and download alternative miner from PLUGINS tab.

Common Issues

ISSUE	SOLUTION
CPU running on 100% without actual mining	Disable Zenemy miner.
4GB card not working on DaggerHashimoto on Win10	DaggerHashimoto DAG file + Win10 VRAM usage is bigger than 4GB, GPU won't work
RX 4xx and 5xx GPUs doing less than ½ of what it should	Enable compute mode in AMD settings
When mining starts on CPU, the hashrate on the GPU drops	Change priority in task manager. Task manager>details>{miner name}>right click>set priority>realtime
CPU miner low hashrate on RandomX	Enable large pages > Lock Pages in Memory
Miner is deleted by antivirus	Add Bin file to windows defender whitelist
GPU not recognized, 3rd party miner crashing, reporting CUDA or OpenCL errors	Reinstall GPU drivers (standard version)
Miners crashing, benchmarks not complete, out of memory error	Increase virtual memory

Send us a ticket via our [support channel](#). You can also join or [discord server](#) or [reddit forum](#) where other users and our team members will be happy to assist you.



